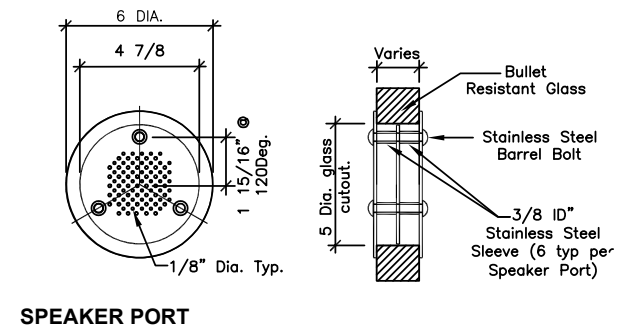
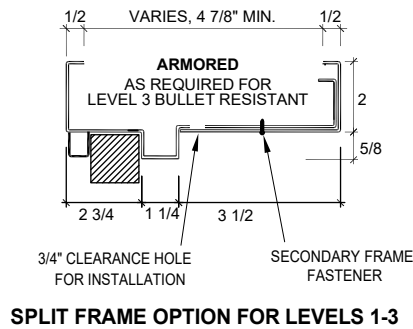
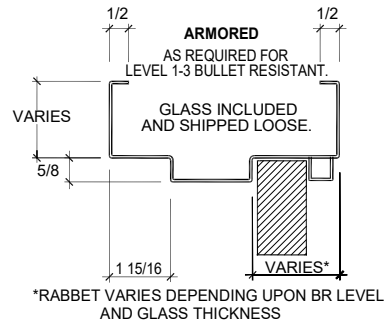
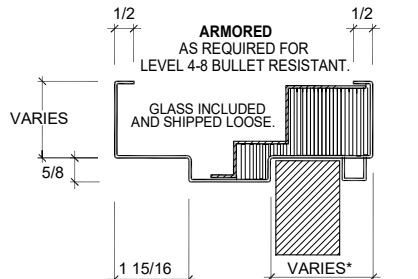
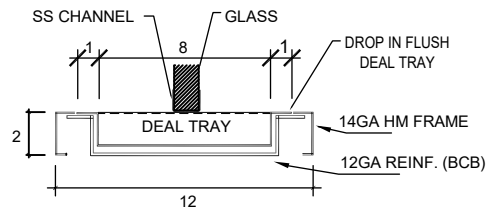
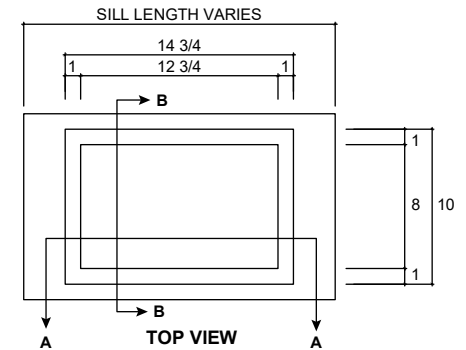


ASSA ABLOY Bullet Resistant Window with Optional Deal Tray and Speaker Port



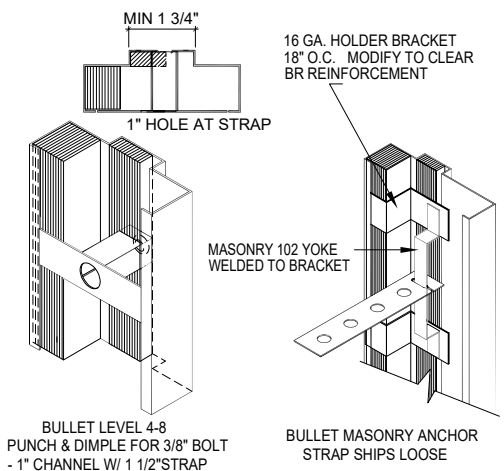
Glass Specifications

	Level	Test	Weapon	Overall Thickness	Wt./ Sq. Ft.	# of Shots
Medium Power - Small Arms	I-GCP	HPW-A	.38 Special	3/4"	4.2	3
Medium Power - Small Arms	I-All Glass	UL	.38 Super	1 1/8"	15	3
High Power - Small Arms	II-All Glass	UL	.357 Magnum	1 3/8"	17	3
Super Power - Small Arms	IIIA-All Glass	NIJ	.44 Magnum & 9mm	1 11/16"	21	5
Super Power - Small Arms	IIIA-GCP	NIJ	.44 Magnum & 9mm	1 3/16"	12	5
Super Power - Small Arms	III-GCP	UL	.44 Magnum	1 3/4"	17.25	3
Super Power - Small Arms	III-All Glass	UL	.44 Magnum	1 3/4"	23	3
High Power - Rifle	IV-All Glass	UL	.30-06 Rifle	2 1/4"	27	1
High Power - Rifle	IV-GCP	UL	.30-06 Rifle	1 1/4"	14	1
High Power - Rifle	V-GCP	UL	7.62 NATO	1 7/8"	16.5	1
High Power - Rifle	VII-GCP	UL	5.56 NATO	1 7/8"	16.5	5
High Power - Rifle	VIII-GCP	UL	7.62 NATO	2"	22.25	5



Specifications

1. All exposed surfaces of door and frame to receive one coat of rust inhibitive primer. Painting frames is recommended prior to installing glass.
2. Assembly is equipped with frame, glass, stops and attachment hardware.
3. Bullet level 1-3 frames is 12 gage (recommended frame to be grouted). Bullet level 4-8 is 14 gage with proprietary ballistic armor material installed in frame.
4. Frames edges are continuously welded and ground smooth.



Experience a safer
and more open world

Rating	Ammunition	Grain (G)	(G)	Velocity (FPS)	Velocity (MPS)	No. of Shots
UL Level 1	9mm FMJ w/ lead core	124	8	1175	358	3
UL Level 2	.357 Magnum jacketed lead soft point	158	10.20	1250	381	3
UL Level 3	.44 Magnum Lead Semi-wadcutter	240	15.60	1350	411	3
UL Level 4	.30 Caliber rifle lead core soft point	180	11.70	2540	774	1
UL Level 5	7.62 mm rifle, FMJ lead core - Military Ball	150	9.70	2750	838	1
UL Level 6	9mm FMJ w/ lead core	124	8	1400	427	5
UL Level 7	5.56 Rifle FMJ Lead core	55	3.56	3080	939	5
UL Level 8	7.62 mm rifle, FMJ lead core - Military Ball	150	9.70	2750	838	5