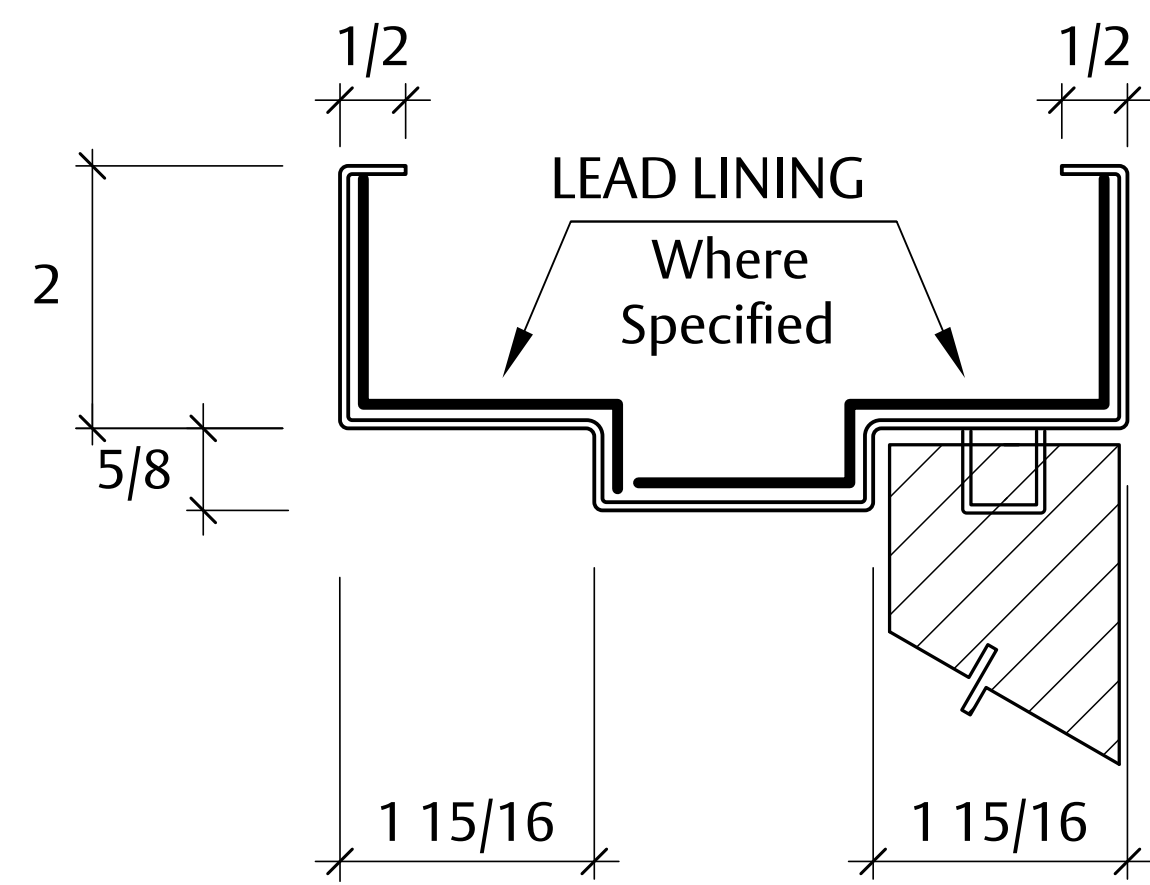
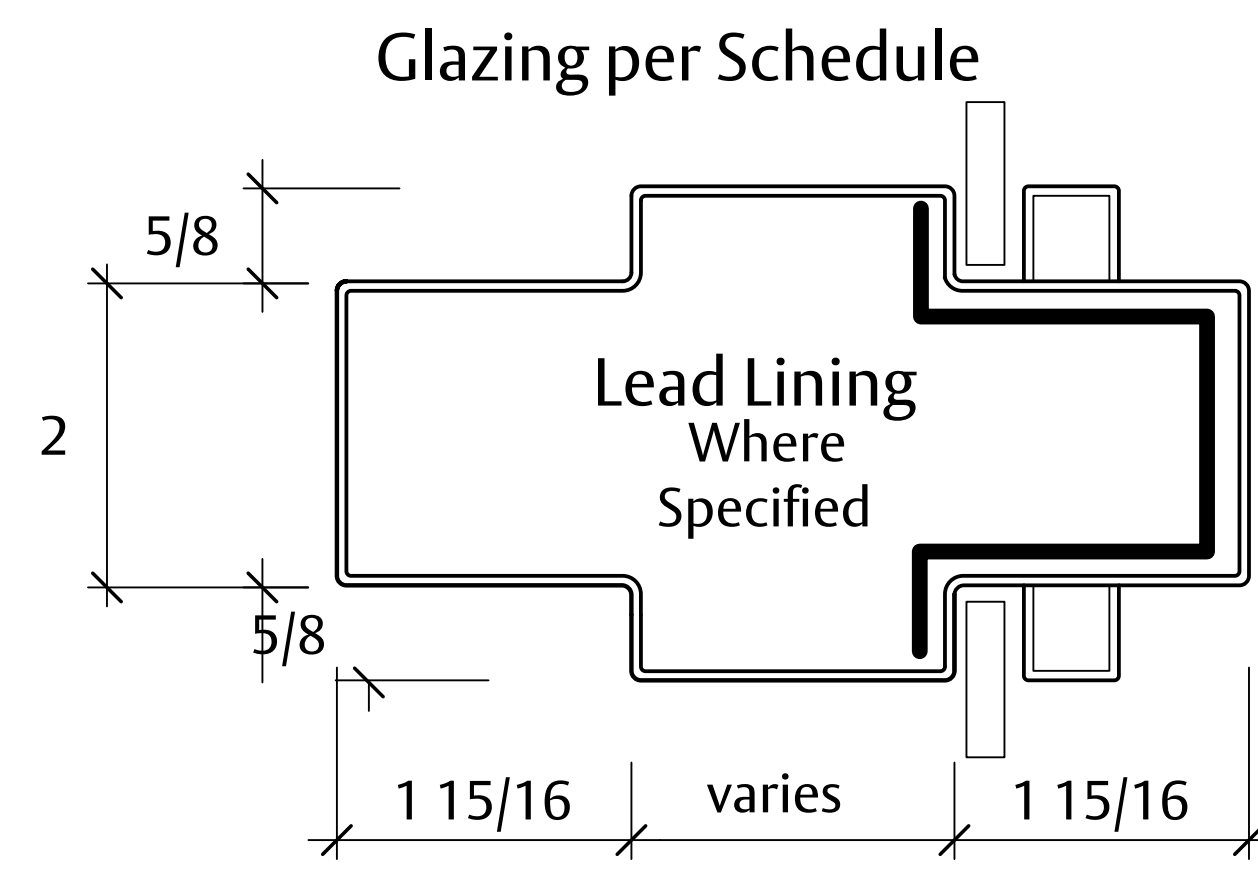


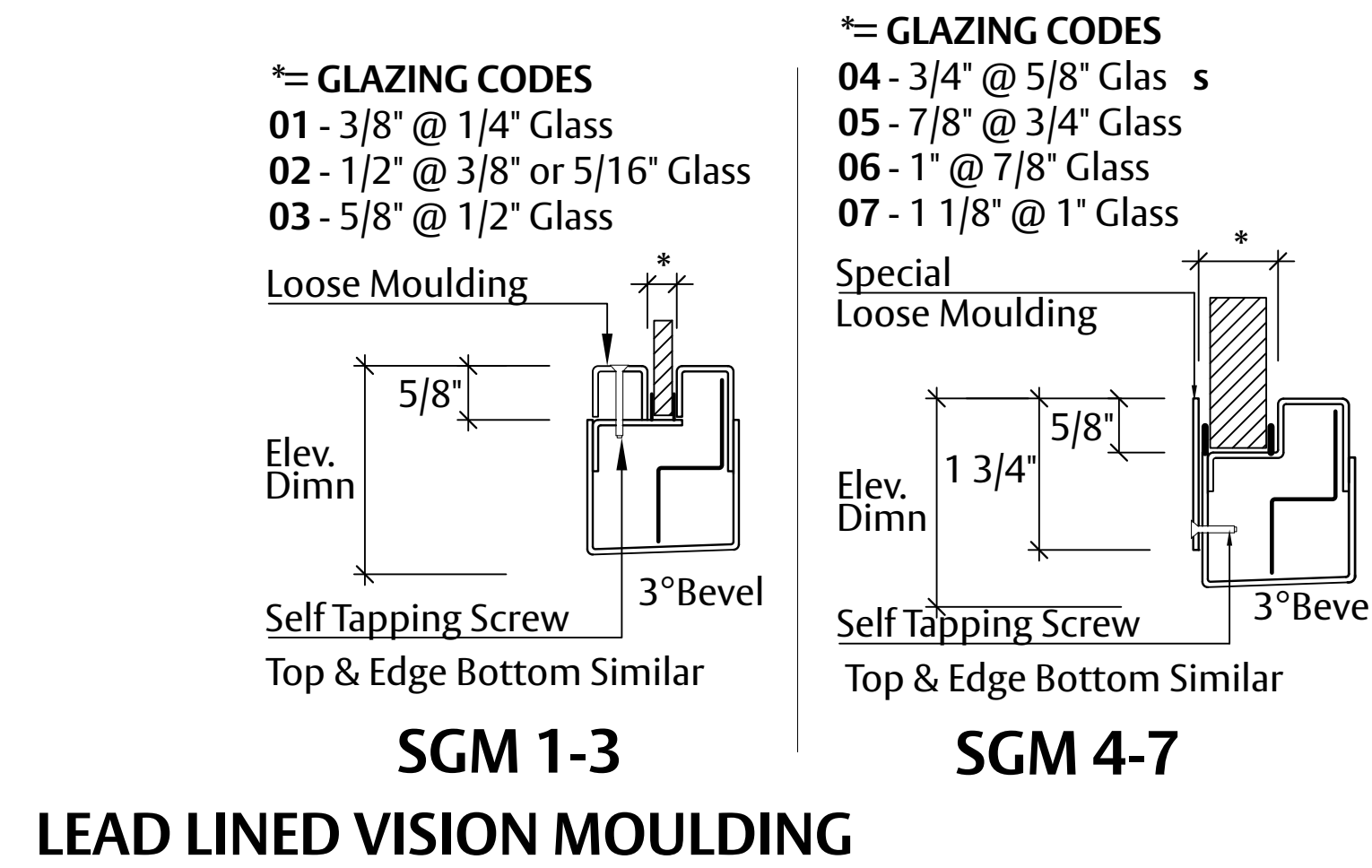
Lead Lined Door and Frame



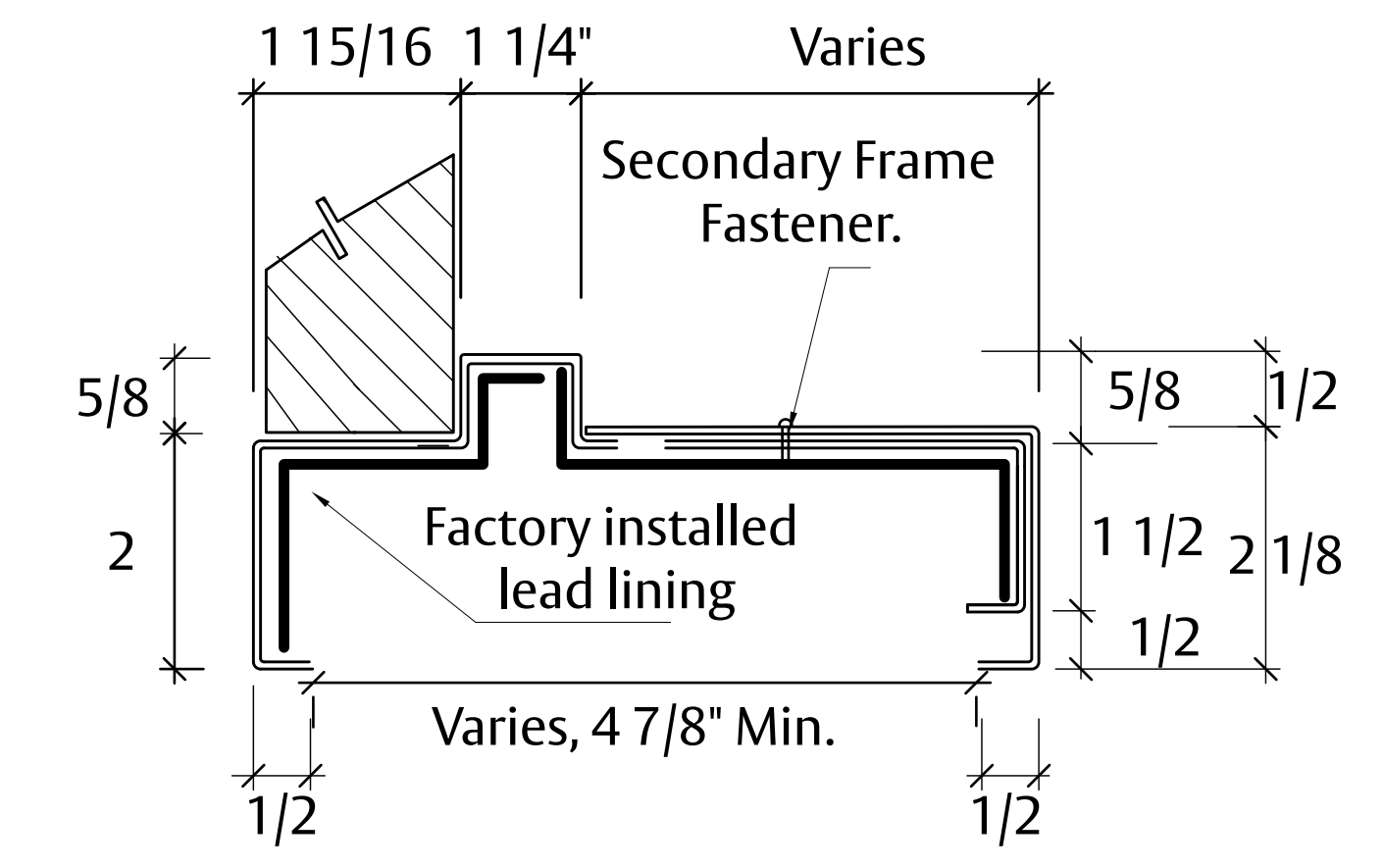
TYPICAL LEAD LINED FRAME PROFILE



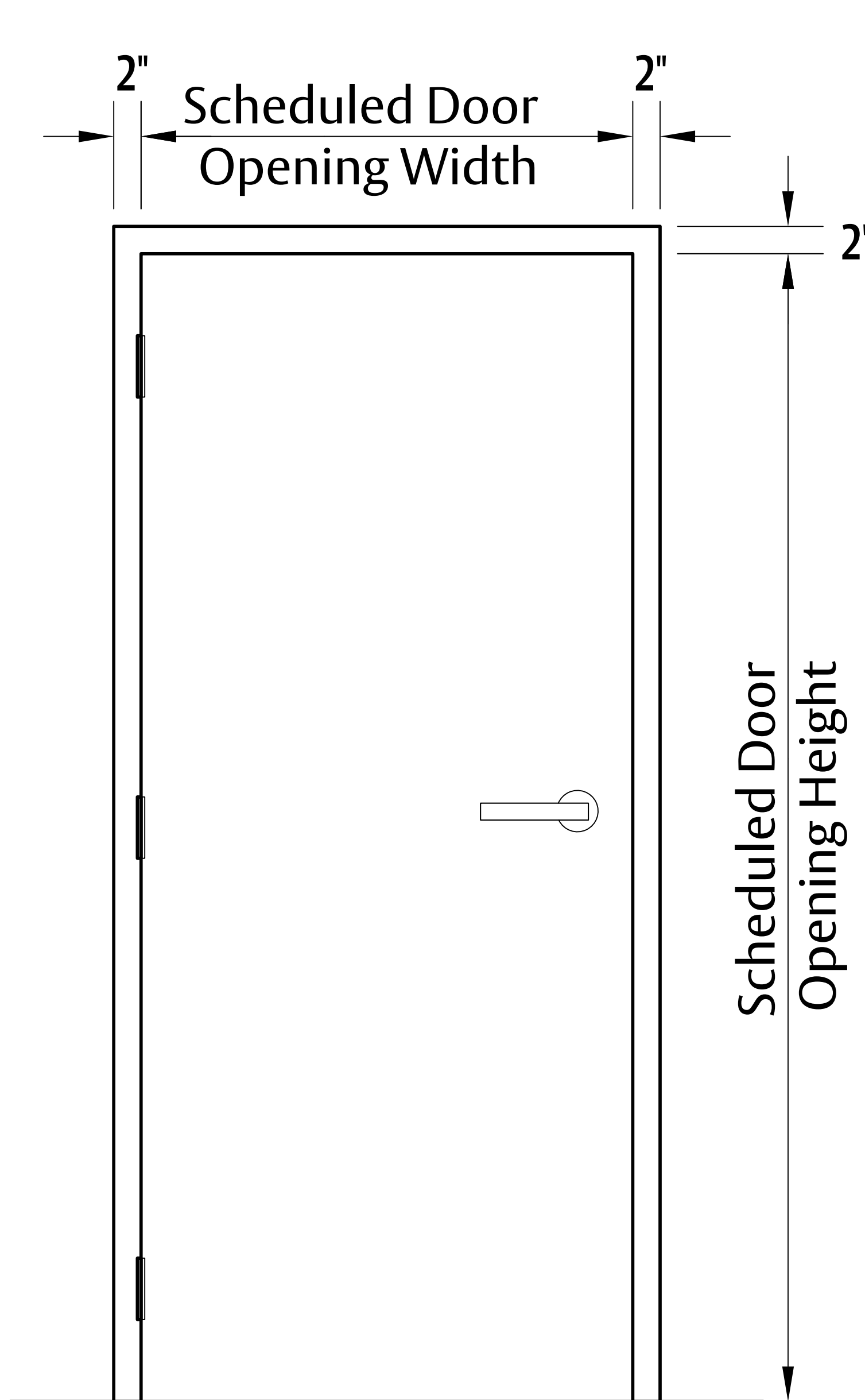
TYPICAL LEAD LINED PROFILE



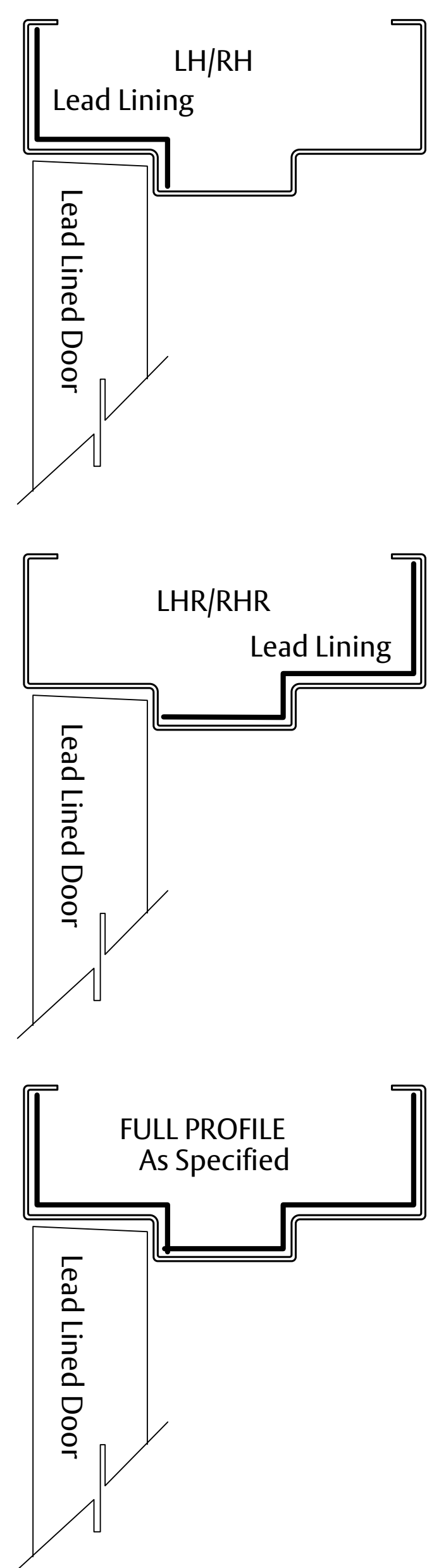
LEAD LINED VISION MOULDING



LEAD LINED SPLIT FRAME PROFILE

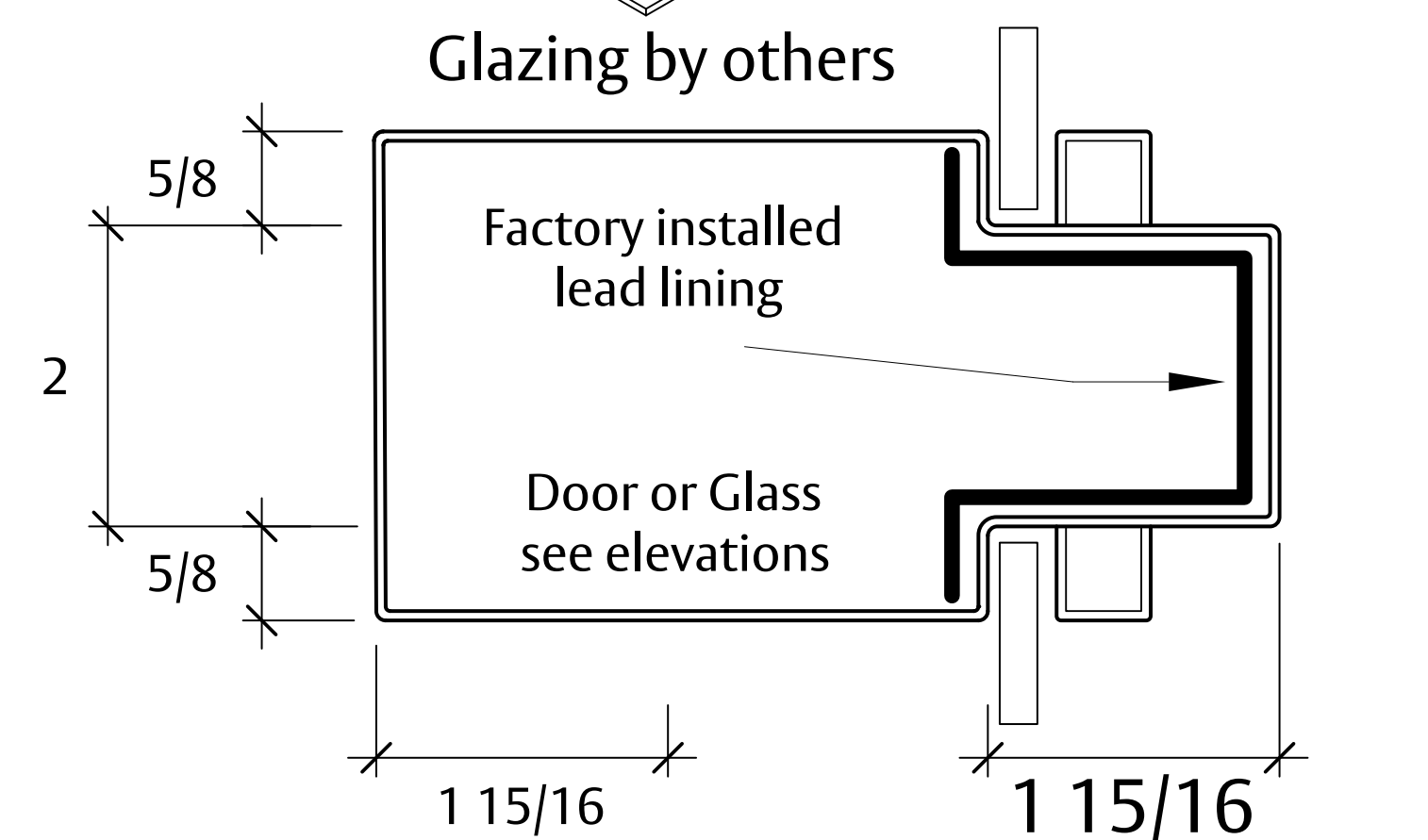
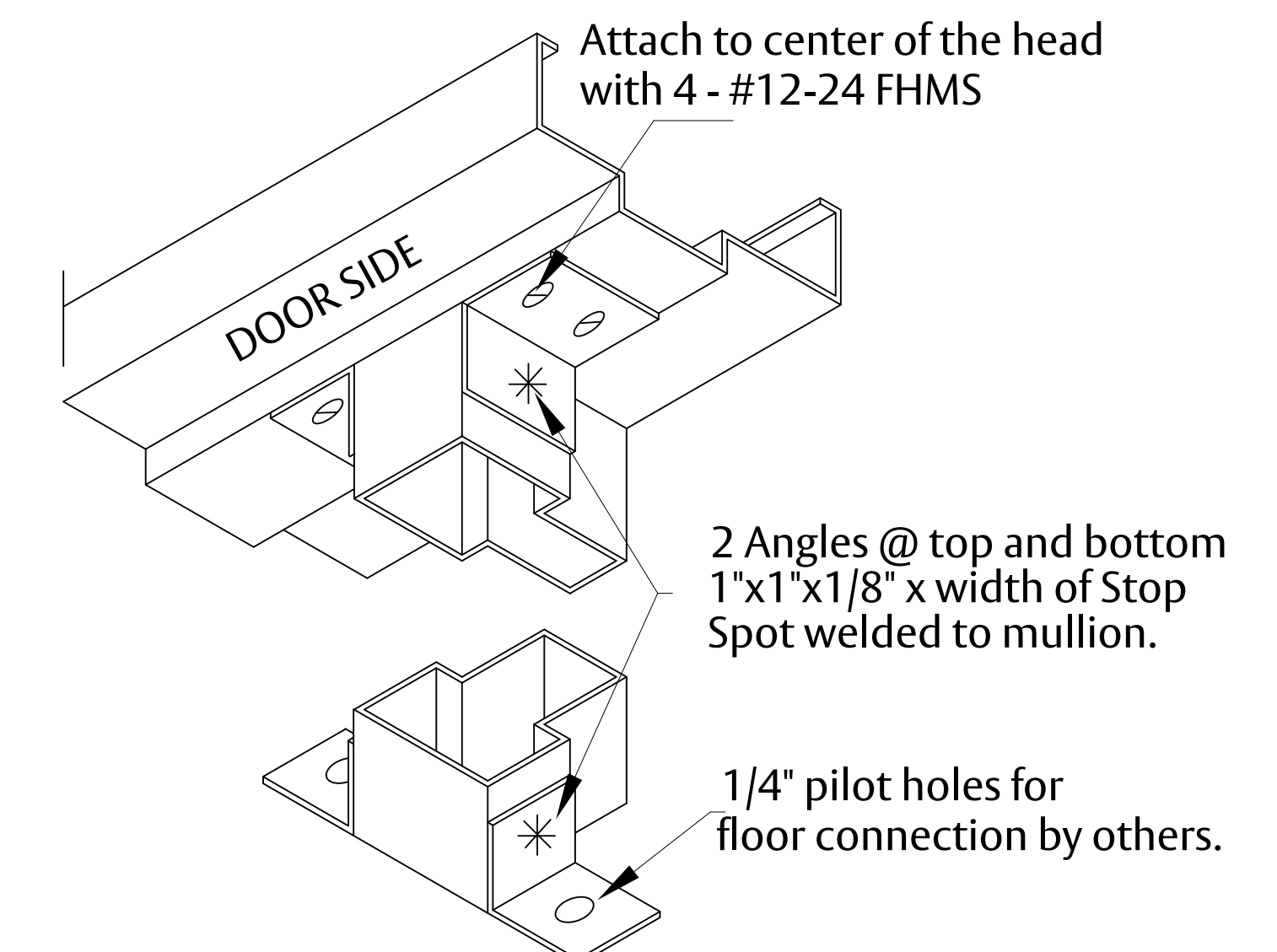


LEAD PLACEMENT

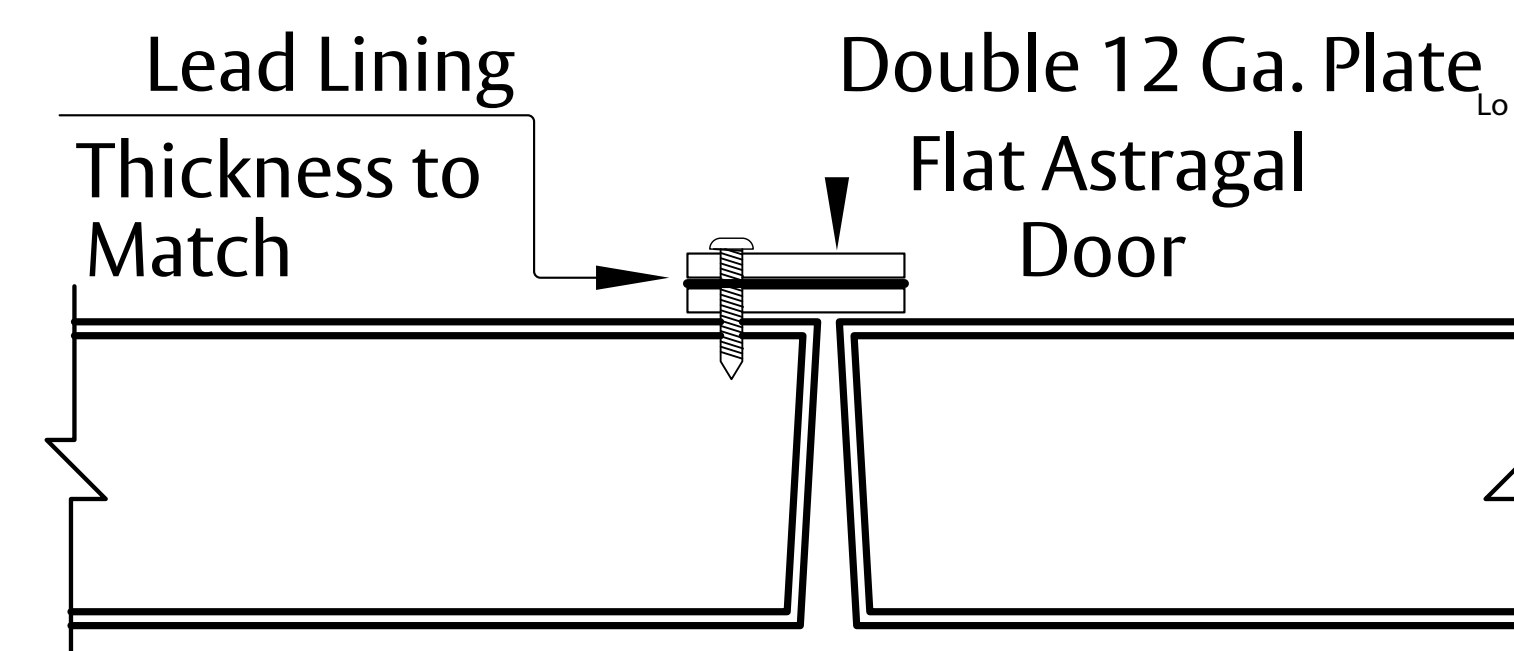


SPECIFICATIONS:

1. All exposed surfaces of door and frame to receive one coat of rust inhibitive prime paint.
2. Assembly is equipped with HM door, frame, and crated for shipment.
3. Lead thickness of 1/4", 1/8", 1/16", 1/32" thick.
4. Door Thickness is 1 3/4".
5. Be aware that due to the additional weight of the door, the frame must be securely tied to the framing from the structural floor to the structure above. Doubled wood studs or 16 Ga. steel studs are strongly recommended to support the weight of the assembly.
6. Doors can be formed of 12 - 16 Gauge sheet steel.
7. Frames can be formed of 12 - 16 Gauge sheet steel with corners mitered, continuously welded and ground smooth.
8. Standard frame profile and anchor types may be used.
9. Standard undercut = 5/8".
10. Fire ratings up to 3 hours are available.
11. Hospital stops are not allowed.



LEAD LINED REMOVABLE CENTER MULLION



PAIRS WITH LEAD ASTRAGAL

Recommended Hardware preparation

Lock = Cylindrical or mortise lock with ANSI 4 7/8" strike.
Hinge = 5" hinge or continuous hinge may be used.
Heavy duty door closer's recommended.
For additional hardware consult with manufacturer.

Experience a safer
and more open world