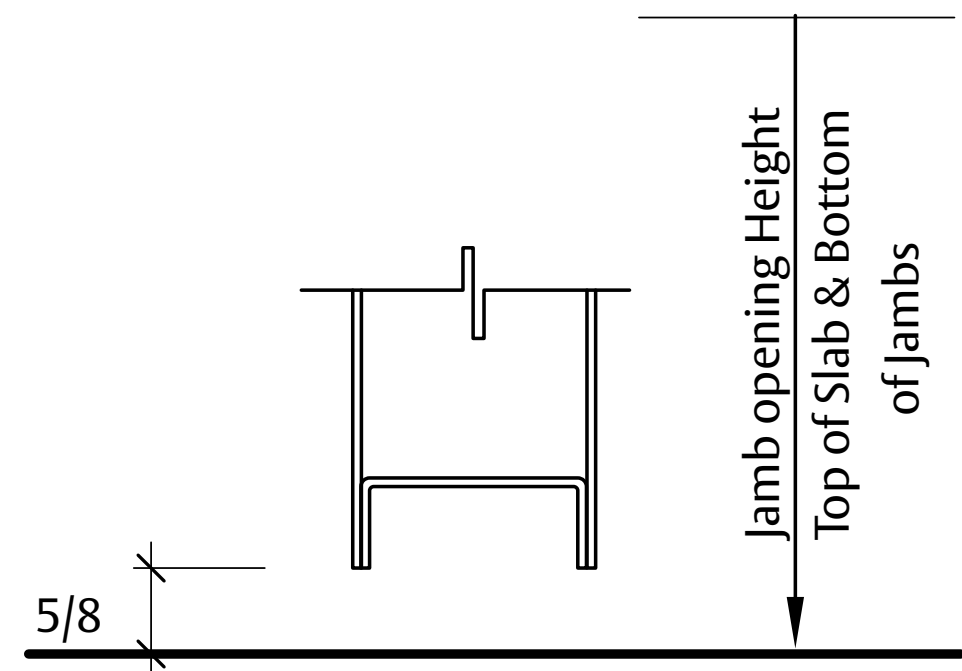
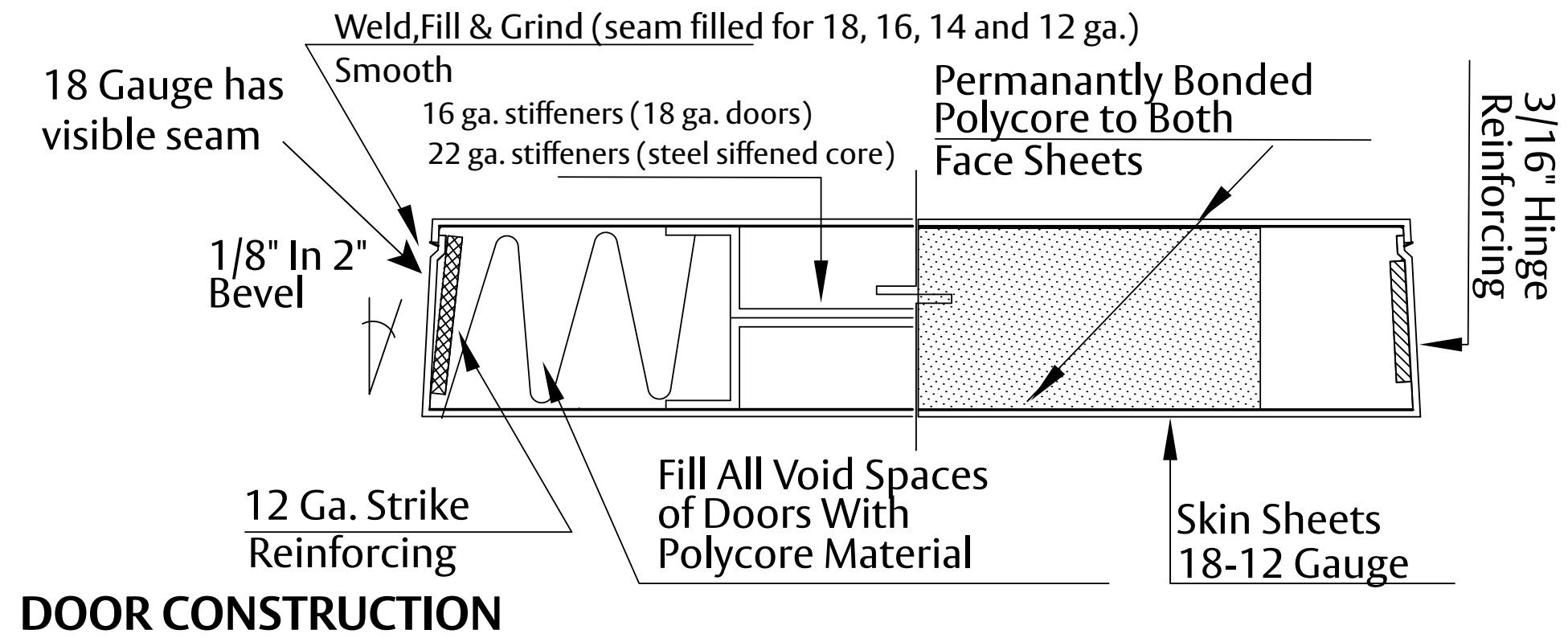


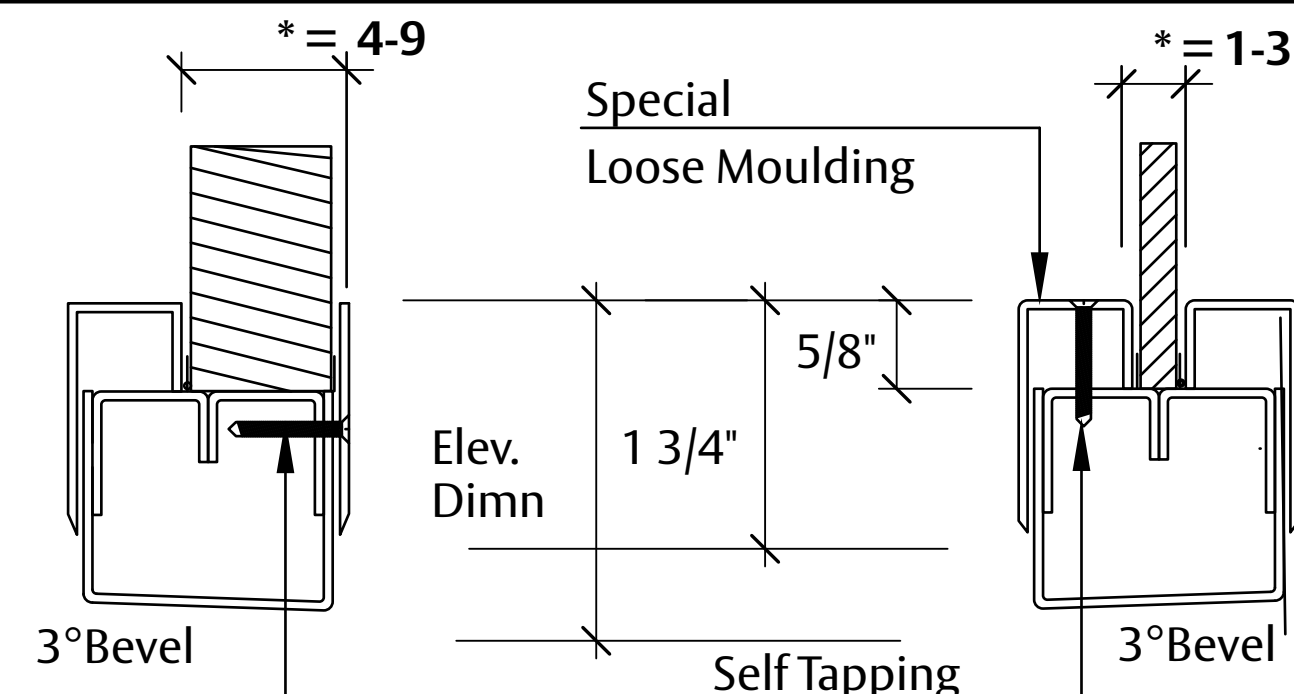
Stainless Steel Door and Frame



STANDARD DOOR BOTTOM



DOOR CONSTRUCTION



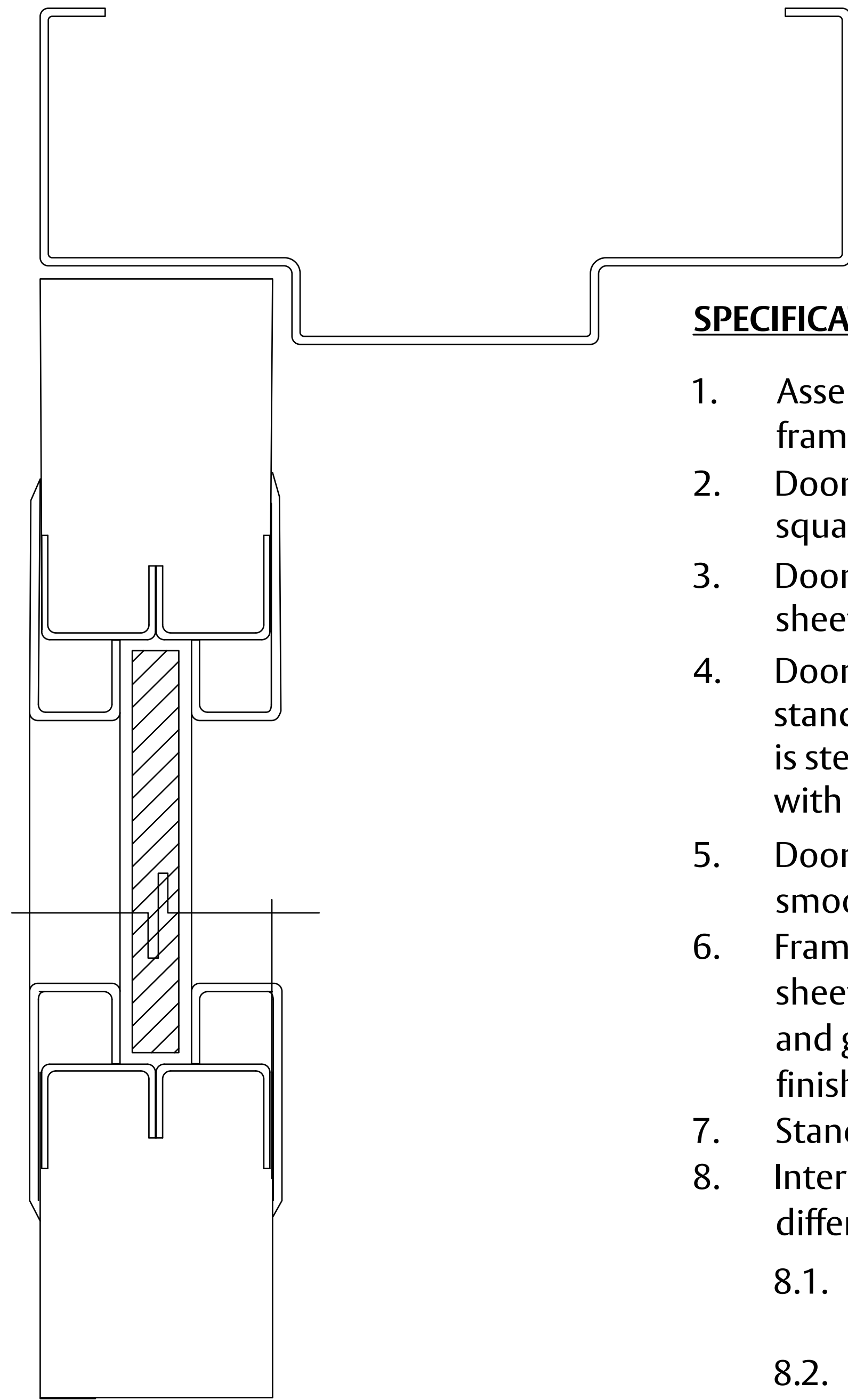
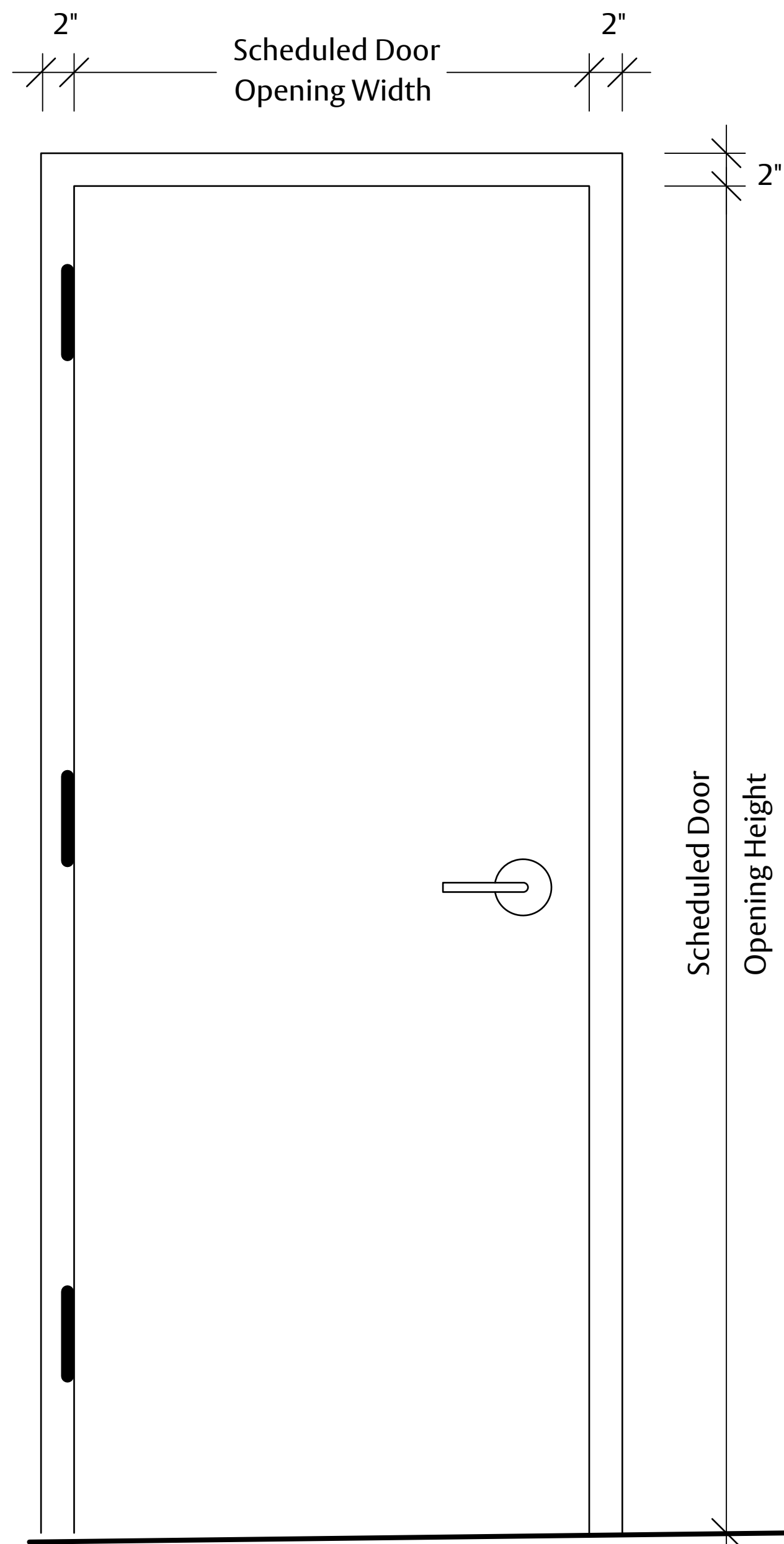
DOOR VISION (available for 18, 16, 14 and 12 ga.)

SGM SS
(Stainless Steel Doors)

DOOR VISION GLAZING CODES

- *= GLAZING CODES**
- 01 - 3/8" @ 1/4" Glass
 - 02 - 1/2" @ 3/8" Glass
 - 03 - 5/8" @ 1/2" Glass (Maximum Pocket size)
- *= GLAZING CODES**
- 04 - 3/4" @ 5/8" Glass
 - 05 - 7/8" @ 3/4" Glass
 - 06 - 1" @ 7/8" Glass
 - 07 - 1 1/8" @ 1" Glass
 - 08 - 1 1/4" @ 1 1/8" Glass
 - 09 - 1 3/8" @ 1 1/4" Glass (Maximum Pocket Size)

TYPICAL ELEVATION



SPECIFICATIONS:

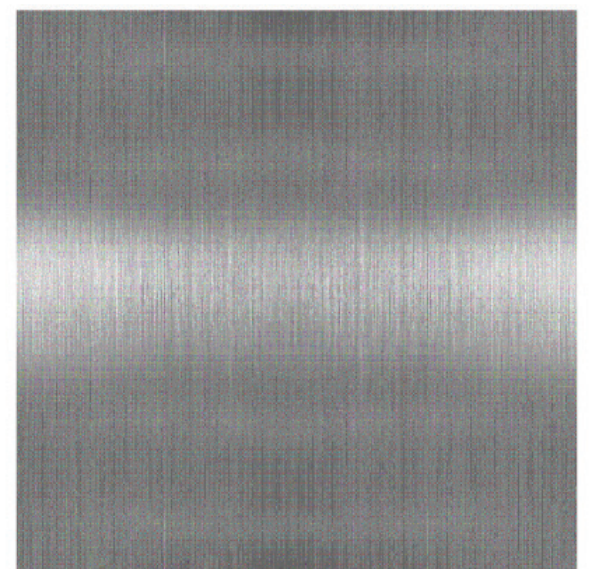
1. Assembly is equipped with stainless steel HM door, frame, and crated for shipment
2. Door Thickness is 1-3/4". Door weight is 8 pounds per square foot
3. Doors are to be formed of no less than 18 Gauge sheet steel. (16, 14 gauge and 12 gauge is also available)
4. Doors to have Polystyrene, Honeycomb, or Polyisocyanurate Core standard. Alternate Core available for 16 ga., 14 ga., and 12 ga. is steel stiffened. 18-gauge specified to have polystyrene standard with options of either polyisocyanurate or honeycomb as alternatives
5. Doors edges to be continuously welded and finished smooth - 18 gauge doors have a visible seam or seamless
6. Frames are to be formed of no less than 16 Gauge sheet steel with corners mitered, continuously welded and ground smooth and finished to match the material finish. (14 and 12 gauge is also available)
7. Standard frame profile and anchor types may be used
8. Internal components of both the door and frame are different between 304 and 316 grade stainless steel
 - 8.1. 304 will have A60 galvanized internal components
 - 8.2. 316 will have 316 stainless steel internal components
9. For watertight stainless steel doors see our watertight line of doors
10. Fire rating and steel stiffened construction available up to 180 min. (not available for 18 ga.)

#2B 304 and 316 Stainless Steel

Available for 16, 14, and 12 gauge

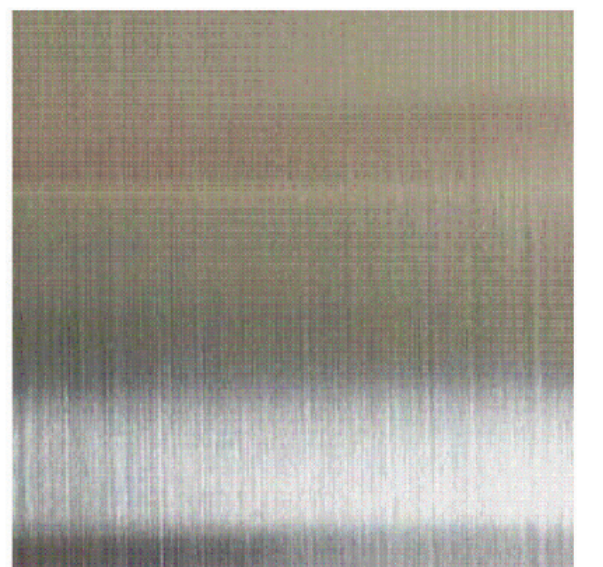


#4 304 and 316 Stainless Steel



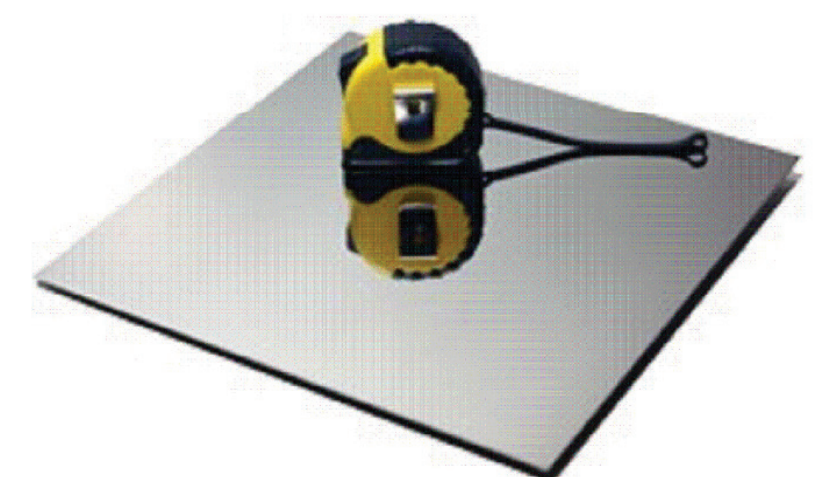
#6 304 and 316 Stainless Steel

Available for 16, 14, and 12 gauge



#8 304 and 316 Stainless Steel

Available for 16, 14, and 12 gauge



XL Blend Stainless Steel

Available for 16, 14, and 12 gauge



Experience a safer and more open world