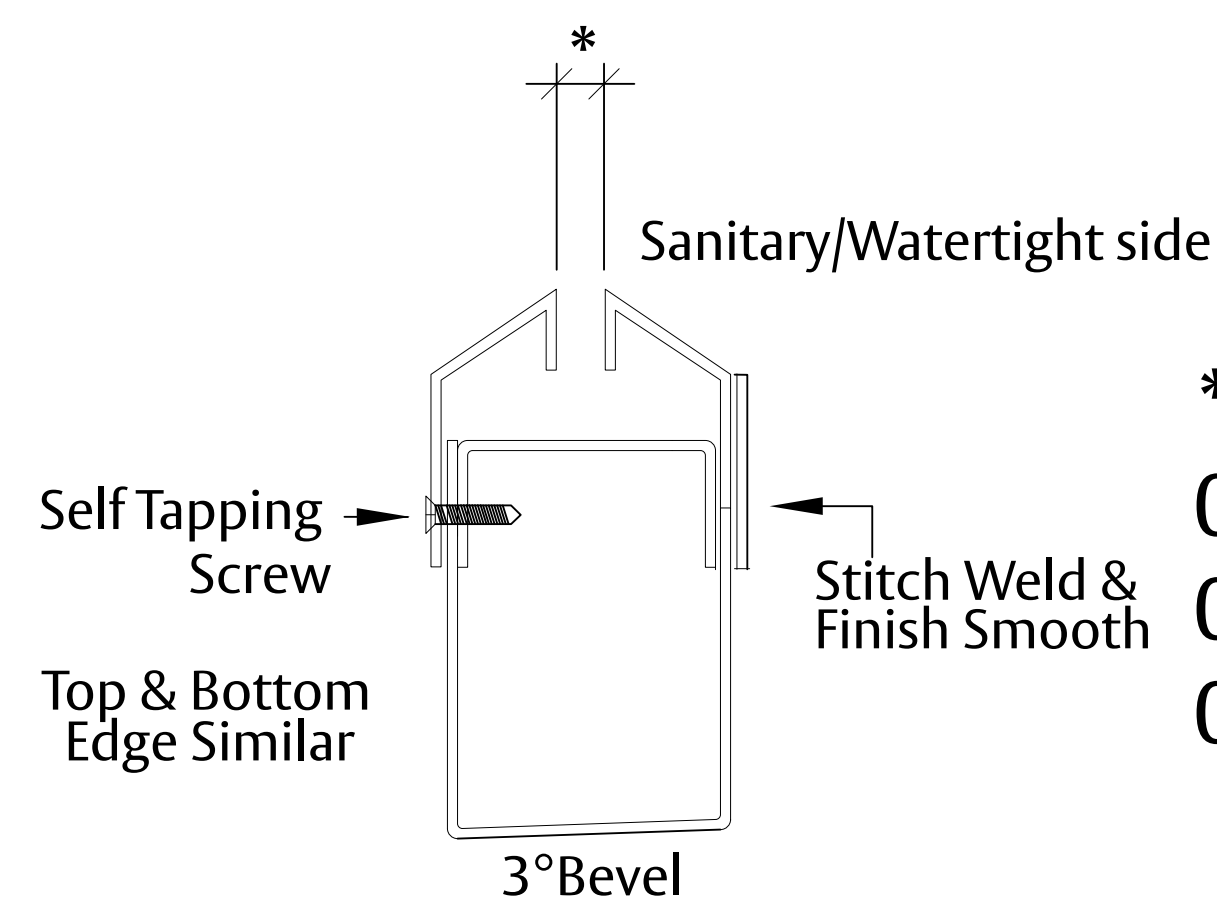
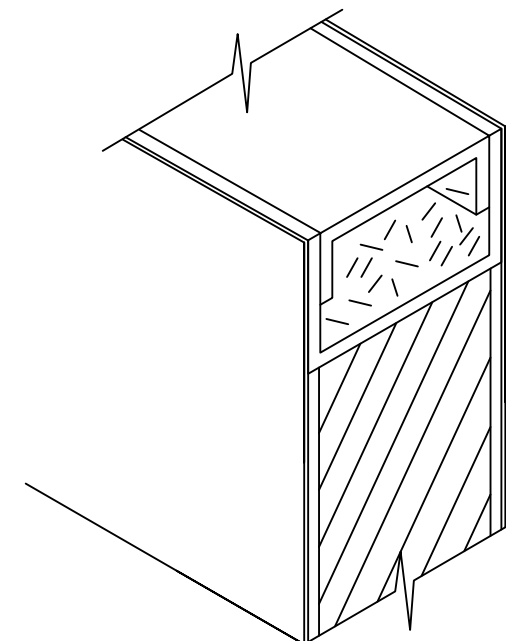


Water Tight Door and Frame



***= GLAZING CODES**
 01 - 3/8" @ 1.4" Glass
 02 - 1/2" @ 3/8" Glass
 03 - 5/8" @ 1/2" Glass

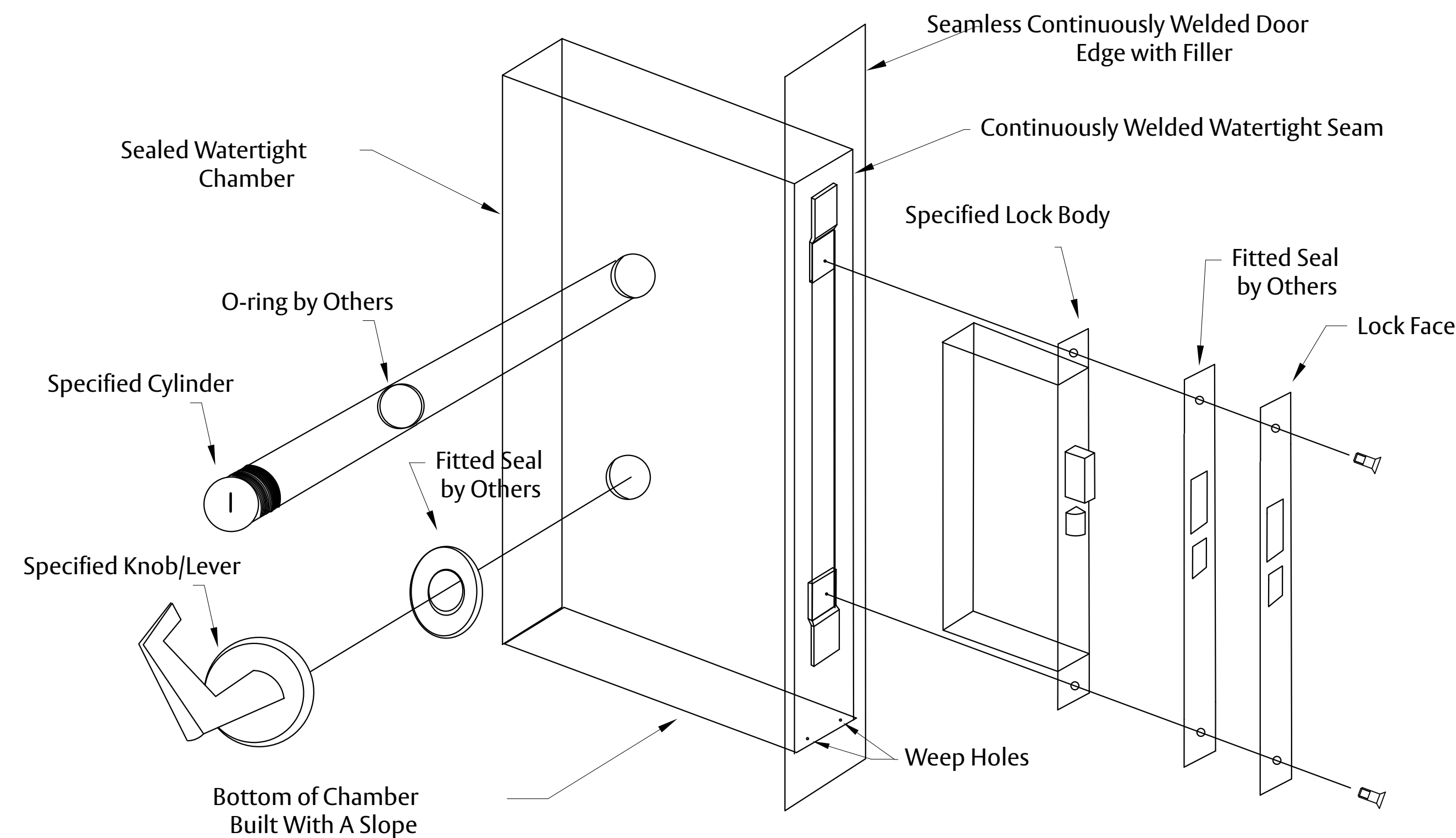
Vision Details



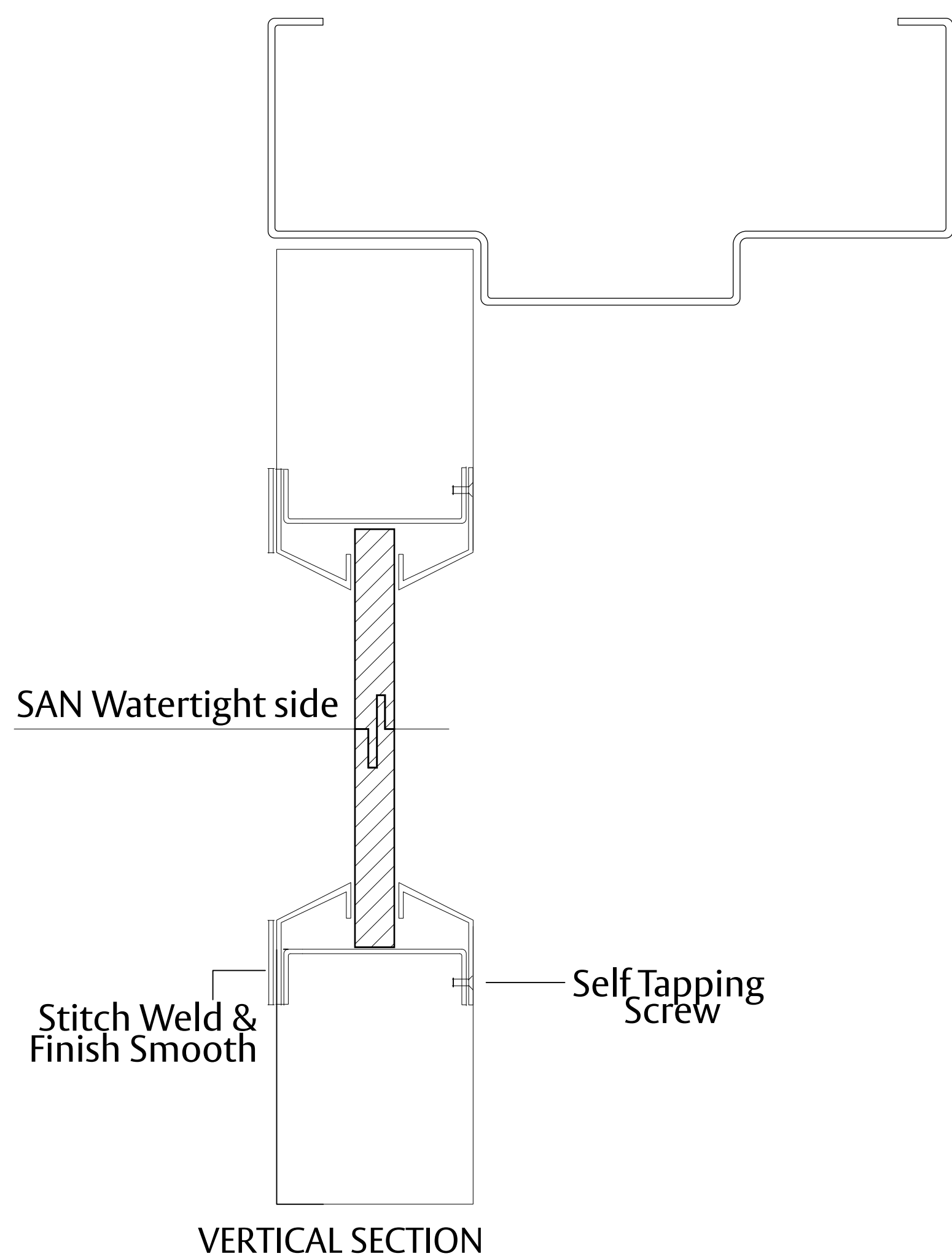
Top and bottom cap welded and filled water tight. Full weld available upon request

Door Construction

Sanitary Watertight Door Detail (Lock Prep)



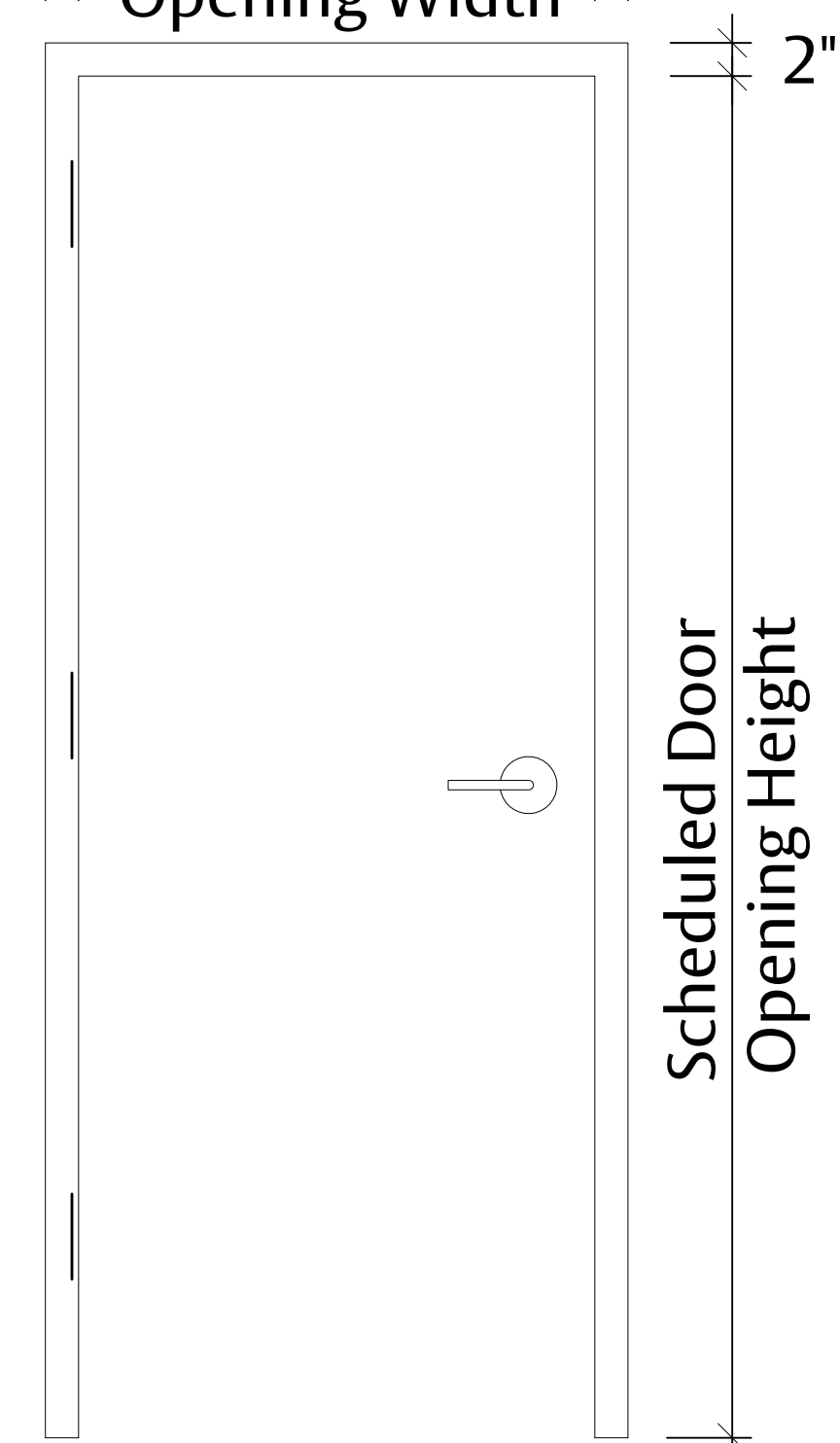
MODEL NO. WT2 WATERTIGHT DOOR AND FRAME WITH VISION



**Water Tight Door
Tech. Data**

TYPICAL ELEVATION

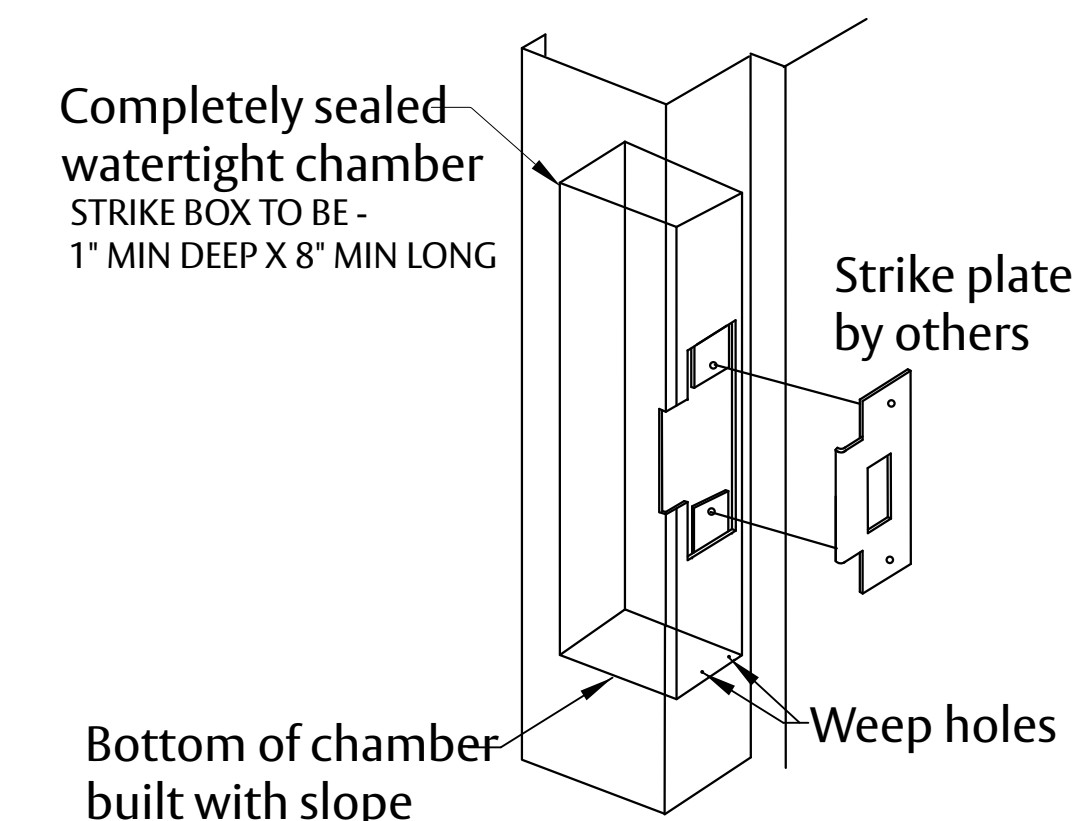
2" Scheduled Door 2"
Opening Width



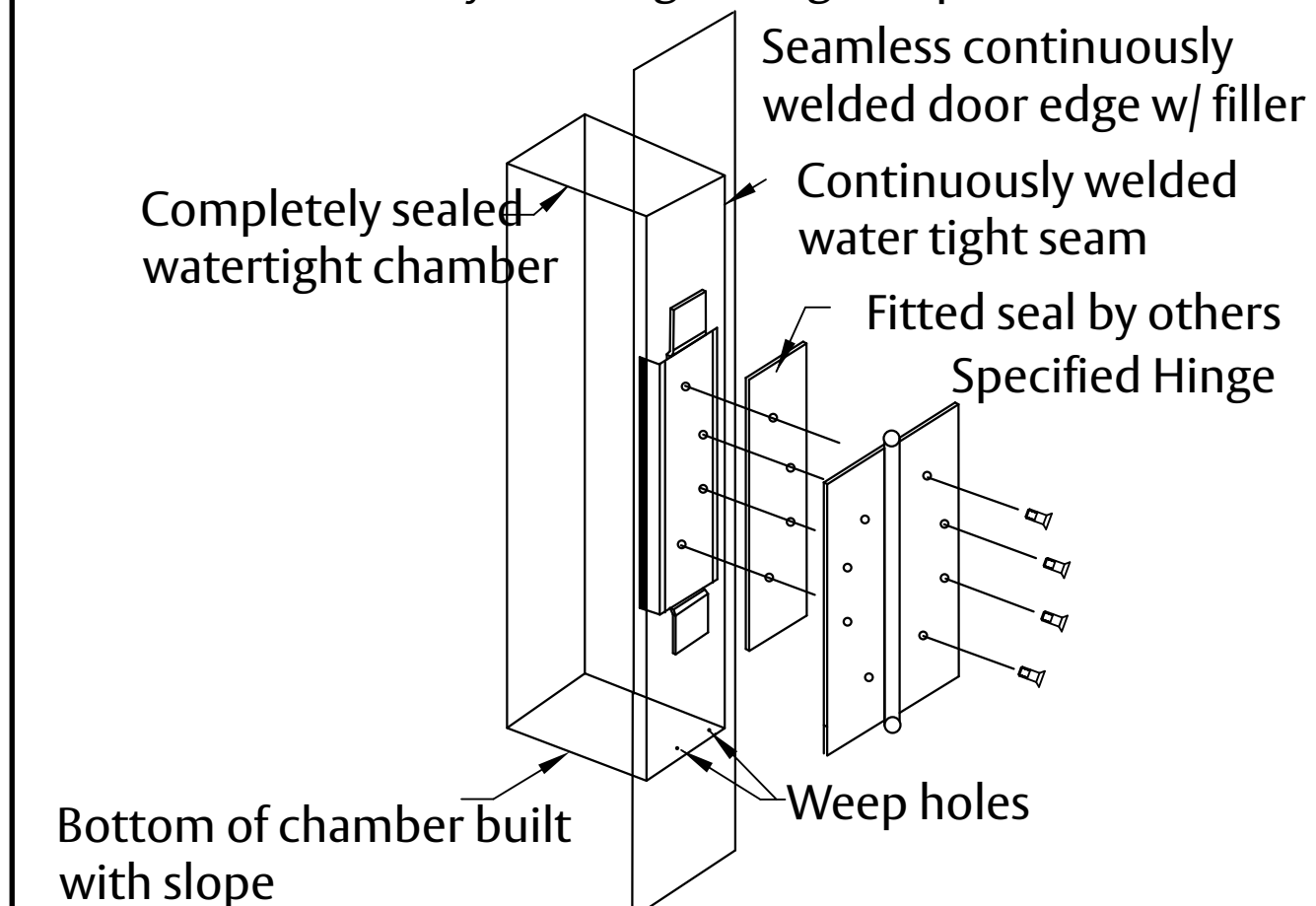
SPECIFICATIONS:

- 1) Assembly is equipped with watertight HM door, frame, and crated for shipment.
- 2) Door Thickness is 1 3/4". Door weight is 8 pounds per square foot.
- 3) Doors are to be formed of no less than 16 Gauge sheet steel (14 Gauge and 12 Gauge is also available).
- 4) Doors to have Polystyrene Core standard, unless specified otherwise. (Alternate Cores available are, Welded Rib, Permanently Bonded Rib, and Polyurethane)
- 5) Door edges to be continuously welded and finished smooth.
- 6) Frames are to be formed of no less than 16 Gauge sheet steel with corners mitered, welded and ground smooth and finished to match the material finish. (14 and 12 Gauge is also available)
- 7) Standard frame profile and anchor types may be used.
- 8) Standard door & frame material is A60 Galvannealed steel, unless specified otherwise. (Also available in G90 & Stainless Steel)
- 9) These products are designed to be watertight components for utilization in clean rooms and wash down areas. They are not designed to hold back water from traveling through the assembly (a.k.a. flood assembly).

Sanitary Watertight Strike Prep Detail Frames are Continuously welded



Sanitary Watertight Hinge Prep Detail



**Experience a safer
and more open world**

FINISH: STANDARD PRIMER PAINT; TESTED IN CONFORMANCE WITH ANSI A250.10