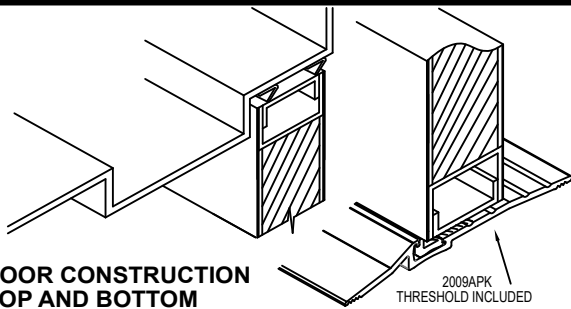
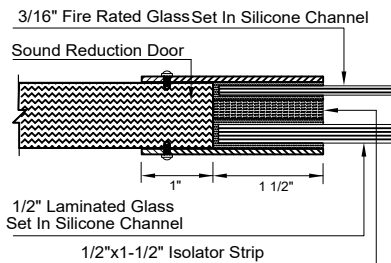


Model AS46P - Acoustical Door System

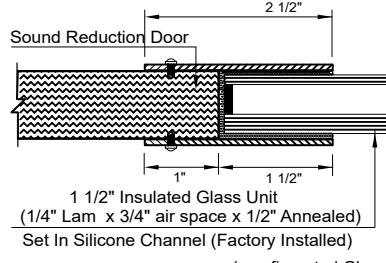
**DOOR CONSTRUCTION
TOP AND BOTTOM**



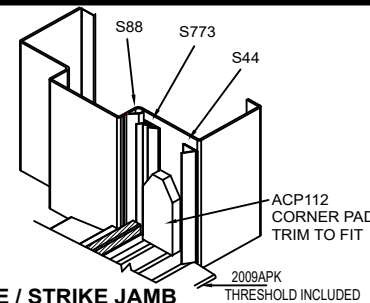
DG20 DOOR VISION (fire rated - Glass factory installed)



IGU20 DOOR VISION (non fire rated Glass Factory Installed)

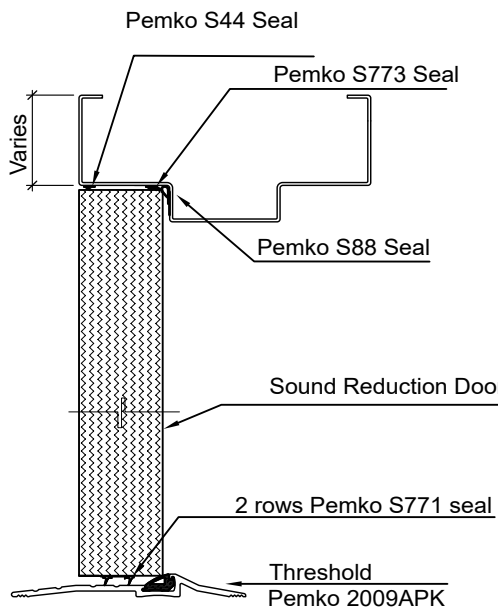


HINGE / STRIKE JAMB



MODEL AS46P UTILIZES "S" PROFILE FRAME

(Seal set 6 for single) (Seal set 4 for pair)



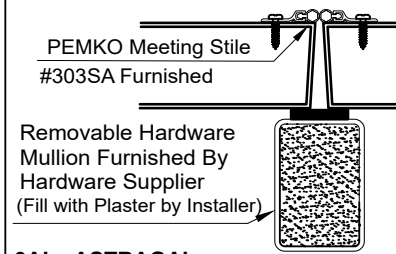
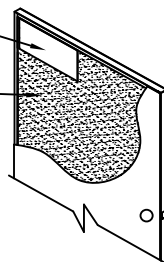
VERTICAL SECTION

SPECIFICATIONS

- 1) All exposed surfaces of door and frame to receive one coat of rust inhibitive prime paint complying with ASTM A250.10.
- 2) An aluminum threshold is included.
- 3) Bottom seals require a flush level sealing surface. The threshold must be level and may require shimming to compensate for an uneven floor. This will prevent any sound leaks at this location.
- 4) Assembly is equipped with metal sound door, frame, seals and threshold. Product is also crated for shipment.
- 5) Door Thickness is 1 3/4". Door weight is 8.4 pounds per square foot. Be aware that the frame must be securely tied to the framing from the sub floor to the structure above.
- 6) Doors are to be formed of no less than 16 Gauge steel face sheets. (14 or 12 gauge also available)
- 7) Frames are to be formed of no less than 16 Gauge sheet steel with corners mitered, continuously welded and ground smooth. (12 gauge also available).
- 8) Doors and frames are formed from commercial quality cold rolled steel with optional zinc coating conforming to ASTM A653 & ASTM A924. Acoustical core and internal construction are manufacturer's proprietary standards as tested in accordance with ASTM E90, E413, E1332, & E2235.
- 9) Frames must be fully grouted. RockWool Delta-10 mineral wool board is an acceptable alternative.
- 10) Please be aware industry standard construction tolerances for squareness of frame installation, plumbness of walls, flatness of floors, etc. may result in a difference of 3db-5db sound loss in a field test vs. lab results.
- 11) Alternate seal sets may be supplied based on function of hardware.
- 12) Plastic laminate veneer options available upon request.
- 13) Fire Rated up to 180 minutes.

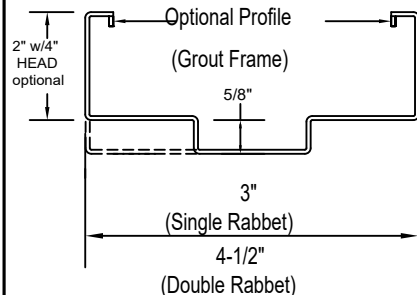
**STC 42-46 (Flush Singles)
1 3/4" Acoustical Door System
Tech. Data**

OPTIONAL-SURFACE MOUNTED
CLOSER REINFORCEMENT
REVOLUTIONARY SOUND
ABSORPTION CORE



3ALa ASTRAGAL

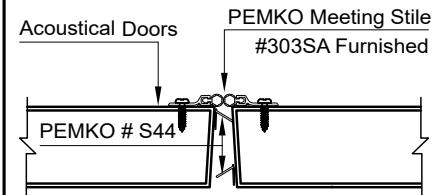
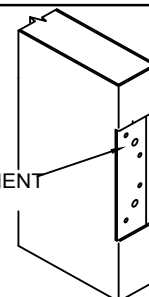
SOUND FRAME PROFILE



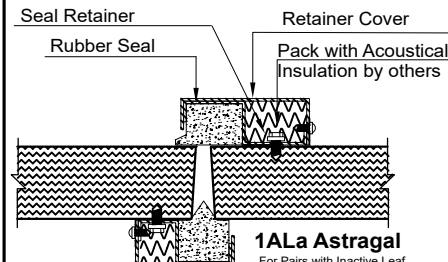
HINGE
PREPARATION
(HINGE PREP
IS HANDED)

7 GAUGE REINFORCEMENT

4-1/2" OR 5"
REGULAR OR HEAVY
WEIGHT HINGES
ANSI A156.7



2ALa ASTRAGAL (Both leaf active)



Experience a safer
and more open world

FINISH:	STANDARD PRIMER PAINT; TESTED IN CONFORMANCE WITH ANSI A250.10
ACOUSTICAL PERFORMANCE	TESTED AND IN COMPLIANCE WITH ASTM E90, ASTM E413, ASTM E1332, & ASTM E2235. DOOR SYSTEMS ARE IN COMPLIANCE WITH HMMMA 865 & SDI-128 SPECIFICATIONS. COMPLETE WITH PERIMETER SOUND SEALS, BOTTOM SEALS AND THRESHOLD AS REQUIRED FOR RATING.