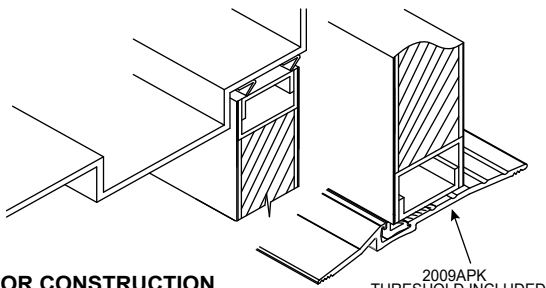


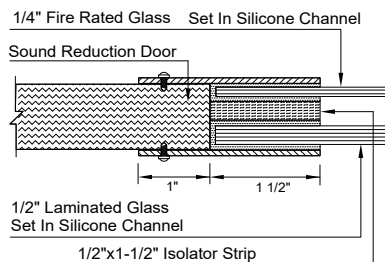
ASSA ABLOY Model AS52P - Acoustical Door System



**DOOR CONSTRUCTION
TOP AND BOTTOM**

2009APK
THRESHOLD INCLUDED

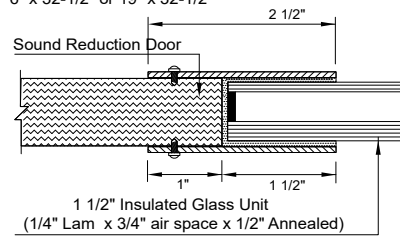
CLEAR VISION STOCK SIZE: 6" x 32-1/2"



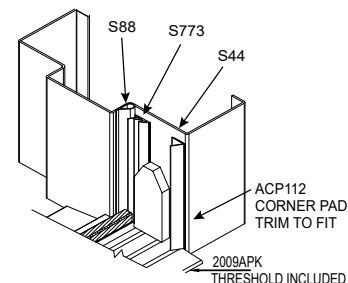
DG20 DOOR VISION (fire rated - Glass factory installed)

CLEAR VISION STOCK SIZE:

6" x 32-1/2" or 19" x 32-1/2"



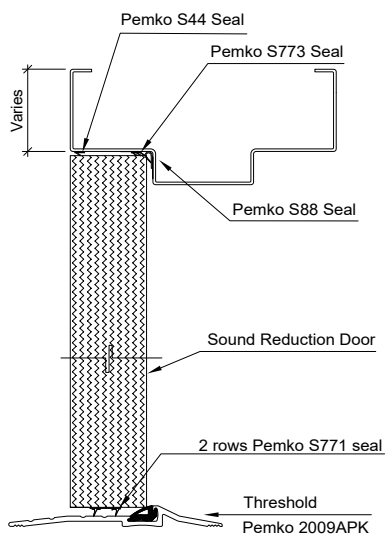
IGU20 DOOR VISION (non fire rated Glass Factory Installed)



HINGE / STRIKE JAMB

MODEL AS52P UTILIZES "S" PROFILE FRAME

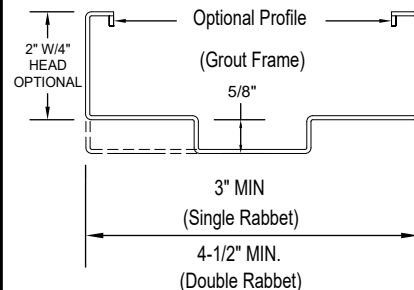
(Seal set 6 for single)



VERTICAL SECTION

SPECIFICATIONS

- 1) All exposed surfaces of door and frame to receive one coat of rust inhibitive prime paint complying with ASTM A250.10.
- 2) An aluminum threshold is included.
- 3) Bottom seals require a flush level sealing surface. The threshold must be level and may require shimming to compensate for an uneven floor. This will prevent any sound leaks at this location.
- 4) Assembly is equipped with metal sound door, frame, seals and threshold. Product is also crated for shipment.
- 5) Door Thickness is 1 3/4". Door weight is 11.9 pounds per square foot. Be aware that the frame must be securely tied to the framing from the sub floor to the structure above.
- 6) Doors are to be formed of no less than 16 Gauge steel face sheets with welded smooth edge at the vertical edges and finished smooth. (14 or 12 gauge also available).
- 7) Frames are to be formed of no less than 14 Gauge sheet steel with corners mitered, continuously welded and ground smooth. (12 gauge also available).
- 8) Doors and frames are formed from commercial quality cold rolled steel with optional zinc coating conforming to ASTM A653 & ASTM A924. Acoustical core and internal construction are manufacturer's proprietary standards as tested in accordance with ASTM E90, E413, E1332, & E2235.
- 9) Frames must be fully grouted. RockWool Delta-10 mineral wool board is an acceptable alternative up to a STC51 requirement.
- 10) Please be aware industry standard construction tolerances for squareness of frame installation, plumbness of walls, flatness of floors, etc. may result in a difference of 3db-5db sound loss in a field test vs. lab results.
- 11) Alternate seal sets may be supplied based on function of hardware.
- 12) Plastic laminate veneer options available upon request.
- 13) Fire Rated up to 180 minutes. (max sound rating with fire rating is STC50)

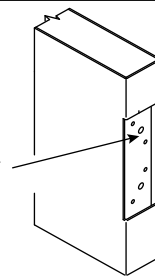


SOUND FRAME PROFILE

HINGE PREPARATION

(HINGE PREP IS HANDED)

7 GAUGE REINFORCEMENT
4-1/2" OR 5"
REGULAR OR HEAVY
WEIGHT HINGES
ANSI A156.7

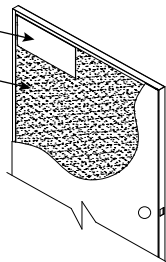


STC 50-52 (Singles)
1 3/4" Acoustical Door System
Tech. Data

Experience a safer
and more open world

OPTIONAL-SURFACE MOUNTED
CLOSER REINFORCEMENT

REVOLUTIONARY SOUND
ABSORPTION CORE



FINISH:	STANDARD PRIMER PAINT; TESTED IN CONFORMANCE WITH ANSI A250.10
ACOUSTICAL PERFORMANCE	TESTED AND IN COMPLIANCE WITH ASTM E90, ASTM E413, ASTM E1332, & ASTM E2235. DOOR SYSTEMS ARE IN COMPLIANCE WITH HMMMA 865 & SDI-128 SPECIFICATIONS. COMPLETE WITH PERIMETER SOUND SEALS, BOTTOM SEALS AND THRESHOLD AS REQUIRED FOR RATING.