

# Cam Locks

Medeco® High Security Cam Locks are recognized throughout the world as the standard for protection in a 3/4 inch diameter lock. Medeco Cam Locks utilize hardened, stainless steel inserts throughout the cylinder to provide the ultimate defense against drilling, pulling, and other forms of vandal attacks. Patented key control programs prevent the unauthorized duplication of keys and maintain system integrity. Keyed alike, keyed different, or master keyed, Medeco offers a complete line of cam locks in a wide variety of sizes and functions to meet your specific needs.



## Patented Key Control

Protects against unauthorized duplication of your keys.



## Available in Intelligent Key System

Medeco cam locks are also available with Medeco Intelligent Key Systems for loss & liability control.



## Can Be Master Keyed

Medeco Cam Locks can be keyed alike, keyed different or master keyed.



## Protection From Physical Attack

Medeco<sup>3</sup> cam locks are UL 437 Listed and stand up to drilling, picking and other forms of physical attack.

## Benefits:

- All Medeco cylinders are constructed of durable machined brass components.
- Hardened stainless steel inserts inside the cylinder provide the ultimate defense against drilling and other forms of physical attack.
- Unique elevating and rotating tumbler pin system is virtually pick proof.
- Patented Medeco<sup>3</sup> keys may only be duplicated by Medeco or an authorized Medeco service outlet, and only at your request.
- Locks can be keyed alike, keyed different, or master keyed depending on your specific needs.
- Available in various lengths and rotations.

## Technical Information:

- Four or five pin models available depending on size
- Available in three standard sizes, 1 1/16 inch, 7/8 inch and 1-1/8 inch. Other sizes available upon request.
- Two flat models available, key retaining only
- Clockwise or counterclockwise rotation, 90 or 180 degrees
- Keyed alike, keyed different, or master keyed

## Warranty:

Warranted for two (2) years against manufacturer's defects. See the Medeco limited warranty for full details

## Finishes:

- 26 satin chrome finish standard
- Other finishes available, depending on volume

## Certification:

- UL 437 Listed

## Applications:

Medeco Cam Locks can be used in any standard 3/4 inch diameter application and a multitude of markets including:

- |                  |                   |
|------------------|-------------------|
| • Safes          | • Utility         |
| • Communication  | • Data Encryption |
| • Alarm          | • Cabinet         |
| • Access control | • Transit         |
| • Banking        | • Lockers         |

## Available Key Technologies:

### Mechanical:

- M<sup>3</sup>
- X4

### Intelligent Key:

- Classic CLIQ
- Medeco XT

**Medeco<sup>3</sup> All-In-One Cam Lock Kits**

Description	Part Number	M3
7/8" Length 5 Pin Cam Lock Kit	600350T KIT (P)	\$147.40
	600350T KIT (S)	\$118.39
1-1/8" Length 5 Pin Cam Lock Kit	600650T KIT (P)	\$147.40
	600650T KIT (S)	\$118.39
5/8" Length 5 Pin Cam Lock Kit	601150T KIT (P)	\$147.40
	601150T KIT (S)	\$118.39
1-1/2" 5 Pin Cam Lock Kit	601450T KIT (P)	\$152.62
	601450T KIT (S)	\$123.62

**X4 Cam Lock Kit**

Description	Part Number	X4
1-1/8" length Medeco X4 7 pin cam lock kit with two cams, hex nut, lock washer, mounting washer and 1/4" spacer collar.	210503 (P)	\$111.40
	210503 (S)	\$94.90

*There is a 6 piece minimum order quantity for high security Cam Lock Kits.*

*All-in-One Cam Lock Kits include: CP-040500 pronged washer, CT-A05 flat cam, CT-D05 flat cam, CT-J01 offset cam, CT-H07 offset cam, CP-040451 90 degree stop washer, CP-040461 180 degree stop washer CP-050060 3/4" - 27 mounting nut and 2 keys.*

*Master keying is not available in a Cam Lock kit, but may be custom ordered with specific Cam Locks listed on the following pages.*

## High Security Cam Locks

Description	Part Number	M3
5 pin, 11/16" Cam Lock	600250T (P)	\$136.63
	600250T (S)	\$107.64
5 pin, 7/8" Cam Lock	600350T (P)	\$136.63
	600350T (S)	\$107.64
5 pin, 1" Cam Lock	600450T (P)	\$136.63
	600450T (S)	\$107.64
4 pin, 7/8" Cam Lock	600550T (P)	\$133.19
	600550T (S)	\$104.19
5 pin, 1-1/8" Cam Lock	600650T (P)	\$136.63
	600650T (S)	\$107.64
4 pin, 11/16" Cam Lock	600750T (P)	\$133.19
	600750T (S)	\$104.19
4 pin, 5/8" Cam Lock	600850T (P)	\$133.19
	600850T (S)	\$104.19
5 pin, 3/4" Cam Lock	600950T (P)	\$136.63
	600950T (S)	\$107.64
5 pin, 5/8" Cam Lock	601150T (P)	\$136.63
	601150T (S)	\$107.64
3 pin, 7/16" Cam Lock	601250T (P)	\$121.59
	601250T (S)	\$92.59
3 pin, 5/8" Cam Lock	601251T (P)	\$121.59
	601251T (S)	\$92.59
5 pin, 1-1/2" Cam Lock	601450T (P)	\$141.86
	601450T (S)	\$112.86
5 pin, 2" Cam Lock	601452T (P)	\$146.04
	601452T (S)	\$117.04

You must specify the operation code to complete the part number. Pinned pricing includes two keys. Standard sizes described, contact Medeco customer service or [medeco.com](http://medeco.com) for variations not listed.

There is a 6 piece minimum order quantity for high security Cam Locks Kits.

## Medeco Cam Lock Part Number Configurations

Part Number	Operation Code	Technology	Finish	Keyway	"Cam Lock Operation Code"
XXXXXXX	XXX	X	26	XX	– Describes the function of the lock: direction of key turn, rotation, key retaining or two key-pull.

## Cam Lock Operation Codes – Fixed Core Cam Locks

*Describes the function of the lock*

Operation Code	Rotation Distance	Direction to Unlock	Key Retaining or 2 Key Pull
219	90°	Clockwise	Key Retaining
229	90°	Clockwise	2 Key Pull
239	90°	Counterclockwise	Key Retaining
249	90°	Counterclockwise	2 Key Pull
259	180°	Clockwise	Key Retaining
269	180°	Clockwise	2 Key Pull
279	180°	Counterclockwise	Key Retaining
289	180°	Counterclockwise	2 Key Pull

**Note:** Key Retaining – Key is removable in the locked position only.

2 Key Pull – Key is removable in both the locked and unlocked positions.

(P) = Pinned (combined)

(S) = Sub-assembled (uncombined)

Surcharges for Master Keying, Custom Coining and Custom Stamping apply, see page 196.  
Refer to the XT and CLIQ Intelligent Key sections for format availability and pricing.

# Removable Core Cam Locks

Medeco® Cam Locks are available with a removable core feature allowing cores to be changed out in seconds, to provide an entirely new keying combination. For applications that may require instantaneous re-keying due to lost or stolen keys, or where periodic re-keying is done as a matter of good business practice, Medeco removable core cam Locks save valuable time and money. Removable core cam locks offer the same high security features of a Medeco cam lock with the convenience of a removable core.



## Patented Key Control

Protects against unauthorized duplication of your keys.



## Quickly Change Cores

Medeco removable provide quick and easy cylinder changes in the event keys are lost or stolen.



## Protection From Physical Attack

Medeco<sup>3</sup> Cam Locks are UL 437 Listed and stand up to drilling, picking and other forms of physical attack.

## Benefits:

- Removable cores can be changed out in seconds to provide a new, secure keying combination.
- All Medeco cylinders are constructed of durable machined brass components.
- Hardened stainless steel inserts inside the cylinder provide the ultimate defense against drilling and other forms of physical attack.
- Unique elevating and rotating tumbler pin system is virtually pick proof.
- Patented Medeco<sup>3</sup> keys may only be duplicated by Medeco or an authorized Medeco service outlet, and only at your request.
- Locks can be keyed alike, keyed different, or master keyed depending on your specific needs.
- Available in various lengths and rotations.

## Technical Information:

- Four or five pin models available depending on size
- Available in three standard sizes, 11/16 inch, 7/8 inch and 1-1/8 inch
- Two flat models available, key retaining only
- Clockwise or counterclockwise rotation, 90 or 180 degrees
- Keyed alike, keyed different, or master keyed

## Warranty:

Warranted for two (2) years against manufacturer's defects. See the Medeco® limited warranty for full details

## Finishes:

- 26 satin chrome finish standard
- Other finishes available, depending on volume

## Applications:

- Medeco® Removable Core Cam Locks can be used in any standard 3/4 inch diameter application and a multitude of markets including:

- |                  |                   |
|------------------|-------------------|
| • Safes          | • Utility         |
| • Communications | • Data Encryption |
| • Alarms         | • Cabinets        |
| • Access control | • Transit         |
| • Banking        | • Lockers         |

## Available Key Technologies:

### Mechanical:

– M<sup>3</sup>

## High Security Removable Core Cam Locks

Description	Part Number	M3
4 pin, 11/16" Removable core Cam Lock	607155XT (P)	\$155.44
	607155XT (S)	\$126.44
4 pin, 7/8" Removable core Cam Lock	607255XT (P)	\$155.44
	607255XT (S)	\$126.44
4 pin, 1-1/8" Removable core Cam Lock	607355XT (P)	\$155.44
	607355XT (S)	\$126.44
5 pin, 1-1/8" Removable core Cam Lock	607455XT (P)	\$157.53
	607455XT (S)	\$128.53
5 pin, 7/8" Removable core Cam Lock	607555XT (P)	\$157.53
	607555XT (S)	\$128.53
Plug for Removable Core Cam Locks. Cam Locks are provided with plug, but additional plugs may be ordered separately. Keys not included in price.	66391 (P)	\$109.05
	66391 (S)	\$80.05

Pinned price includes 2 keys.

### X = Rotation for Removable Core Cam Lock

Description	Part Number
90 degree Clockwise	0
90 degree Counterclockwise	1
180 degree Clockwise	2
180 degree Counterclockwise	3



## A Series Flat Cams

Description	Part Number	Price
5/8" Flat Cam	CT-A00	\$3.55
3/4" Flat Cam	CT-A01	\$3.55
7/8" Flat Cam	CT-A02	\$3.55
1" Flat Cam	CT-A03	\$3.55
1-1/8" Flat Cam	CT-A04	\$3.55
1-1/4" Flat Cam	CT-A05	\$3.55
1-3/8" Flat Cam	CT-A06	\$3.55
1-1/2" Flat Cam	CT-A07	\$3.55
1-5/8" Flat Cam	CT-A08	\$3.55
1-3/4" Flat Cam	CT-A09	\$3.55
2" Flat Cam	CT-A11	\$3.55
2-1/8" Flat Cam	CT-A12	\$3.55
2-1/4" Flat Cam	CT-A13	\$3.55
2-3/8" Flat Cam	CT-A14	\$3.55
2-1/2" Flat Cam	CT-A15	\$3.55
2-5/8" Flat Cam	CT-A16	\$3.55
3" Flat Cam	CT-A19	\$3.55

(P) = Pinned (combined)

(S) = Sub-assembled (uncombined)

Surcharges for Master Keying, Custom Coining and Custom Stamping apply, see page 196.  
Refer to the XT and CLIQ Intelligent Key sections for format availability and pricing.

**C Series Flat Cams, 45° Tenon**

Description	Part Number	Price
7/8" Flat Cam	CT-C02	\$3.55
1-1/8" Flat Cam	CT-C04	\$3.55
1-1/4" Flat Cam	CT-C05	\$3.55
1-5/8" Flat Cam	CT-C08	\$3.55
1-3/4" Flat Cam	CT-C09	\$3.55
2" Flat Cam	CT-C11	\$3.55

**D Series Flat Cams, Horizontal Tenon**

Description	Part Number	Price
5/8" Flat Cam	CT-D00	\$3.55
3/4" Flat Cam	CT-D01	\$3.55
7/8" Flat Cam	CT-D02	\$3.55
1" Flat Cam	CT-D03	\$3.55
1-1/8" Flat Cam	CT-D04	\$3.55
1-1/4" Flat Cam	CT-D05	\$3.55
1-3/8" Flat Cam	CT-D06	\$3.55
1-1/2" Flat Cam	CT-D07	\$3.55
1-5/8" Flat Cam	CT-D08	\$3.55
1-3/4" Flat Cam	CT-D09	\$3.55
2" Flat Cam	CT-D11	\$3.55
2-1/8" Flat Cam	CT-D12	\$3.55
2-1/2" Flat Cam	CT-D15	\$3.55
3" Flat Cam	CT-D19	\$3.55

**H Series Offset Cam, Vertical Tenon**

Description	Part Number	Price
1-1/4" Cam with 1/8" offset	CT-H00	\$3.69
1-1/8" Cam with 7/32" offset	CT-H07	\$3.69
1-1/8" Cam with 1/8" offset	CT-H09	\$3.69
1-1/2" Cam with 7/32" offset	CT-H14	\$3.69
1-1/4" Cam with 7/32" offset	CT-H15	\$3.69
1-1/8" Cam with 5/16" offset	CT-H16	\$3.69
1-1/4" Cam with 5/16" offset	CT-H17	\$3.69
1-3/4" Cam with 5/16" offset	CT-H19	\$3.69
2" Cam with 5/16" offset	CT-H20	\$3.69
7/8" Cam with 5/32" offset	CT-H27	\$3.69
1-3/4" Cam with 7/32" offset	CT-H30	\$3.69
1-1/2" Cam with 5/16" offset	CT-H32	\$3.69

(P) = Pinned (combined)

(S) = Sub-assembled (uncombined)

Surcharges for Master Keying, Custom Coining and Custom Stamping apply, see page 196.  
Refer to the XT and CLIQ Intelligent Key sections for format availability and pricing.



### J Series Offset Cam, Horizontal

Description	Part Number	Price
1-1/8" Cam with 7/32" offset	CT-J01	\$3.69
1" Cam with 1/8" offset	CT-J05	\$3.69
1-1/4" Cam with 1/8" offset	CT-J07	\$3.69
1-5/8" Cam with 1/8" offset	CT-J08	\$3.69
2-1/8" Cam with 1/8" offset	CT-J11	\$3.69
1-1/4" Cam with 7/32" offset	CT-J12	\$3.69
1-1/8" Cam with 5/16" offset	CT-J13	\$3.69
1-1/4" Cam with 5/16" offset	CT-J14	\$3.69
1-5/8" Cam with 5/16" offset	CT-J15	\$3.69
2-1/8" Cam with 5/16" offset	CT-J18	\$3.69
1-1/8" Cam with 5/32" offset	CT-J22	\$3.69
1-1/2" Cam with 5/16" offset	CT-J27	\$3.69
2-1/8" Cam with 7/32" offset	CT-J28	\$3.69
7/8" Cam with 5/32" offset	CT-J29	\$3.69
3/4" Hex nut for Cam Locks	CP-050060	\$2.06

### 3/4" Removable Plug Lock

Description	Part Number	M3
1 keypull, 3/4" Removable plug lock	640250T (P)	\$141.86
	640250T (S)	\$112.86
2 keypull, 3/4" Removable plug lock	640251T (P)	\$141.86
	640251T (S)	\$112.86

### 1 1/8" Removable Plug Lock

Description	Part Number	M3
1 keypull, vertical flats, flush mount	640550T (P)	\$160.67
	640550T (S)	\$131.67
1 keypull, horizontal flats, flush mount	640550AT (P)	\$160.67
	640550AT (S)	\$131.67
2 keypull, vertical flats, surface mount with tapered bezel	640550FT (P)	\$160.67
	640550FT (S)	\$131.67

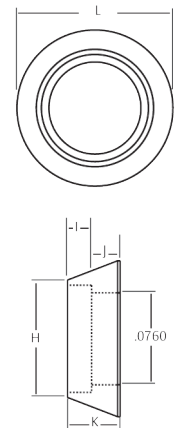
*Pinned price includes 2 keys.*

## Security Collars

Description	Part Number	Price
Cam Lock security collar	CP-070501	\$11.90
Cam Lock security collar	CP-070131	\$11.90
Cam Lock security collar	CP-070161	\$11.90
Cam Lock security collar	CP-070171	\$11.90
Cam Lock security collar	CP-070441	\$11.90
Cam Lock security collar	CP-070201	\$11.90
Cam Lock security collar	CP-070111	\$11.90
Cam Lock security collar	CP-070141	\$11.90
Cam Lock security collar	CP-070181	\$11.90
Cam Lock security collar	CP-070481	\$11.90

## Security Collars

Part Number	(H)	(I)	(J)	(K)	(L)
CP-070501	1.000"	.142"	.170"	.312"	1.290"
CP-070131	.885"	.142"	.170"	.312"	1.210"
CP-070161	.885"	.188"	.250"	.438"	1.356"
CP-070171	.885"	.200"	.238"	.438"	1.290"
CP-070441	.885"	.260"	.070"	.330"	1.210"
CP-070201	.885"	.262"	.050"	.312"	1.210"
CP-070111	.885"	.278"	.160"	.438"	1.290"
CP-070141	.885"	.325"	.050"	.375"	1.275"
CP-070181	1.000"	.450"	.050"	.500"	1.250"
CP-070481	1.000"	.638"	.050"	.688"	1.313"

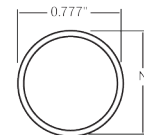


## Spacers

Description	Part Number	Price
Cam lock spacer, obtain specific part number from following dimension chart.	CP-160XXX	\$10.10

## Spacers

Part Number	(M)	(N)
CP-160051	.125"	.875"
CP-160101	.140"	.875"
CP-160071	.188"	.875"
CP-160111	.200"	.875"
CP-160081	.250"	.875"
CP-160091	.275"	.875"
CP-160301	.375"	.875"
CP-160121	.400"	.875"
CP-160061	.530"	.875"
CP-160271	.437"	.875"
CP-160541	.031"	.875"
CP-160551	.062"	.875"
CP-160571	.312"	.875"
CP-160591	.062"	.995"
CP-160601	.125"	.995"
CP-160611	.250"	.995"



(P) = Pinned (combined)  
 (S) = Sub-assembled (uncombined)  
 Surcharges for Master Keying, Custom Coining and Custom Stamping apply, see page 196.  
 Refer to the XT and CLIQ Intelligent Key sections for format availability and pricing.



**Pop-Out, T-Handle Cylinder**

Description	Part Number	M3
5 pin, zinc deadbolt	640155CT (P)	\$122.11
	640155CT (S)	\$93.11
5 pin, zinc springbolt	640155T (P)	\$122.11
	640155T (S)	\$93.11
4 pin, zinc springbolt	640750ET (P)	\$124.51
	640750ET (S)	\$95.51
4 pin, zinc deadbolt	640750GT (P)	\$124.51
	640750GT (S)	\$95.51
4 pin, steel springbolt	640950T (P)	\$134.54
	640950T (S)	\$105.55
4 pin, steel deadbolt	640952T (P)	\$134.54
	640952T (S)	\$105.55
4 pin, steel springbolt, steel shell	641050T (P)	\$173.21
	641050T (S)	\$144.21
4 pin, steel deadbolt, steel shell	641051T (P)	\$173.21
	641051T (S)	\$144.21

*Pinned price includes two keys.*

*Note: Refer to the XT section for format availability and pricing for XT Intelligent Key T-Handle Cylinders.*

(P) = Pinned (combined)

(S) = Sub-assembled (uncombined)

Surcharges for Master Keying, Custom Coining and Custom Stamping apply, see page 196.  
Refer to the XT and CLIQ Intelligent Key sections for format availability and pricing.

# Cabinet Locks

Medeco® cabinet locks are specifically designed for drawer or cabinet door applications where a conventional utility cam lock may not be suitable. Cabinet locks utilize heavy-duty bolts and multi-point attachment to the mounting surface in order to withstand the heavy use and higher physical security some applications may require. All Medeco cabinet locks feature solid brass and steel construction, available in either fixed or removable core. Patented key programs prevent the unauthorized duplication of keys and maintain system integrity. Keyed alike, keyed different, or master keyed, the Medeco cabinet lock is the perfect solution for your showcase security needs.



## Patented Key Control

Protects against unauthorized duplication of your keys.



## Available in Intelligent Key

Medeco cabinet locks are also available with Medeco Intelligent Keys for loss & liability control.



## Protection From Physical Attack

Medeco<sup>3</sup> cabinet locks are UL 437 Listed and stand up to drilling, picking and other forms of physical attack.

## Benefits:

- Medeco high security cabinet locks are constructed of durable machined brass and solid steel components.
- Available in either fixed or removable core depending on your specific requirements.
- Available in either deadbolt or spring latch models.
- Unique elevating and rotating tumbler pin system is virtually pick proof.
- Patented Medeco<sup>3</sup> keys may only be duplicated by Medeco or an authorized Medeco service outlet, and only at your request.
- Medeco Cabinet Locks can be keyed in with other 60 Series products.
- Locks can be keyed alike, keyed different, or master keyed depending on your specific needs.

## Technical Information:

- Five pin models available in either deadbolt or spring latch versions.
- 7/8 inch diameter, surface mount, fixed or removable core available.
- Deadbolt fixed core available in non-key retaining.
- Keyed alike, keyed different, or master keyed.

## Warranty:

Warranted for two (2) years against manufacturer's defects. See the Medeco® limited warranty for full details.

## Finishes:

- 26 satin chrome finish standard.
- Other finishes available, depending on volume.

## Applications:

- Medeco cabinet locks are specifically designed for use in metal or wooden drawer and cabinet door applications including:
  - Medical and narcotics
  - Chests and cabinets
  - Showcases
  - Cash carts
  - Drawers

## Available Key Technologies:

### Mechanical:

- M<sup>3</sup>
- X4

### Intelligent Key:

- Medeco XT

## High Security Cabinet Locks

Description	Part Number	Price
Cabinet Lock with deadbolt, single keypull	6210555T (P)	\$181.57
	6210555T (S)	\$152.57
Cabinet Lock with deadbolt, double keypull	6212555T (P)	\$181.57
	6212555T (S)	\$152.57
Cabinet Lock with spring bolt, single keypull	6211555T (P)	\$201.43
	6211555T (S)	\$172.43
Removable Core Cabinet Lock with deadbolt, single keypull, less plug	6270515	\$97.80
Removable Core Cabinet Lock with spring bolt, single keypull, less plug	6271515	\$110.00
Plug for removable Core Cabinet Lock	66391 (P)	\$109.05
	66391 (S)	\$80.05

Pinned price includes two keys.

## SFIC Cabinet Locks

Description	Part Number	Price
Cabinet lock with deadbolt for SFIC cylinder. Works with Medeco X4, Medeco XT SFIC, or Best style SFIC. SFIC ordered separately.	3307311	\$81.80
Cabinet lock with spring bolt for SFIC cylinder. Works with Medeco X4, Medeco XT SFIC, or Best style SFIC. SFIC ordered separately.	3307321	\$81.80
File Cabinet Lock for SFIC cylinder. Works with Medeco X4, Medeco XT SFIC or Best style SFIC Cylinders. SFIC ordered separately.	3307350	\$81.80
Door/Drawer Lock for SFIC cylinder. Works with Medeco X4, Medeco XT SFIC, or best style SFIC. SFIC ordered separately.	3307331	\$81.80

## Traffic Cabinet Locks

Description	Part Number	Price
Traffic Cabinet Lock – Medeco <sup>3</sup> – Deadbolt	490435	\$242.44
Traffic Cabinet Lock – Medeco <sup>3</sup> – Slam Bolt	490436	\$244.53

Note: Available through authorized Medeco service centers only.  
Traffic Cabinet Locks are available 26 finish only, MM keyway.

## 511S Cabinet Lock

Formerly offered by ASSA ABLOY ACCENTRA, Medeco 511S cabinet locks are brass locks pinned to electric panel code “47” (4 pin). They are suited for a range of wood or metal wardrobe doors. Medeco’s 511S cabinet lock offering consists of the following three configurations, all keyed to the “47” key number.

Description	Part Number	Price
3/4" RH, 05 Finish, Pinned to “47”	94-51106R-P47-05	\$233.00
1" RH, 26 Finish, Pinned to “47”	94-51108R-P47-26	\$233.00
1-1/8" RH, 26 Finish, Pinned to “47”	94-51109R-P47-26	\$233.00

(P) = Pinned (combined)  
(S) = Sub-assembled (uncombined)  
Surcharges for Master Keying, Custom Coining and Custom Stamping apply, see page 196.  
Refer to the XT and CLIQ Intelligent Key sections for format availability and pricing.

# Plunger Locks

Medeco® Plunger Locks are specifically designed for use in wooden or metal sliding doors. Complete with a spring loaded pop out cylinder, the Medeco plunger lock is ideal for security merchandise showcases, metal cabinets, and laboratory and office furniture. Plunger Locks require no key when locking the device; simply push in on the cylinder to relock. Patented key programs prevent the unauthorized duplication of keys and maintain system integrity. Keyed alike, keyed different, or master keyed, the Medeco plunger lock is the perfect solution for your security needs.



## Patented Key Control

Protects against unauthorized duplication of your keys.



## Can Be Master Keyed

Medeco Plunger Locks can be keyed alike, keyed different or master keyed.



## Protection From Physical Attack

Medeco<sup>3</sup> Plunger Locks are UL 437 Listed and stand up to drilling, picking and other forms of physical attack.

## Benefits:

- Medeco Plunger Locks are constructed of durable machined brass and solid steel components
- Unique elevating and rotating tumbler pin system is virtually pick proof
- Patented Medeco<sup>3</sup> keys may only be duplicated by Medeco or an authorized Medeco service outlet, and only at your request
- Medeco Plunger Locks are completely serviceable, and can be re-keyed in case of lost or stolen keys
- Locks can be keyed alike, keyed different, or master keyed depending on your specific needs

## Technical Information:

- Four and five pin models available
- Non-key retaining cylinders
- 45 degree clockwise rotation to unlock
- Keyed alike, keyed different or master keyed

## Warranty:

Warranted for two (2) years against manufacturer's defects. See the Medeco limited warranty for full details.

## Finishes:

- 26 satin chrome finish standard.
- Other finishes available, depending on volume.

## Applications:

- Medeco Plunger Locks are specifically designed for use in metal or wooden sliding door applications including:
  - Jewelry and other merchandise showcases
  - Metal cabinets
  - Laboratory furniture
  - Office furniture

## Available Key Technologies:

### Mechanical:

– M<sup>3</sup>

### Intelligent Key:

– Classic CLIQ

## Plunger Locks

Description	Part Number	M3
Plunger Lock, 5 pin round bolt	6221557T (P)	\$200.38
	6221557T (S)	\$171.38
Plunger Lock, 5 pin glass mount	6261557T (P)	\$233.82
	6261557T (S)	\$204.82
Plunger Lock, 4 pin round bolt	6221554T (P)	\$200.38
	6221554T (S)	\$171.38

Pinned price includes two keys.

# Micro Switch Locks

Medeco's 3/4" diameter, high security Switch Locks offer a wide range of electrical functions with the physical security and patented key control of a Medeco cylinder. Available in either single or double switch models, Medeco Switch Locks are ideally suited for applications requiring controlled access to electrically activated systems, including alarms, ATMs, time delay safes, encryption devices, heavy power equipment, control panels and electrically accessed doors and gates. The Medeco<sup>3</sup> unique design provides triple locking action, making the locks virtually pick proof. All Medeco<sup>3</sup> keys and locks are protected by trademark and copyright laws. Medeco keys may only be duplicated by Medeco or by an authorized Medeco dealer, and only at your request.



## Patented Key Control

Protects against unauthorized duplication of your keys.



## Can Be Master Keyed

Medeco Switch Locks can be keyed alike, keyed different or master keyed.



## Protection From Physical Attack

Medeco<sup>3</sup> Switch Locks are UL 437 Listed and stand up to drilling, picking and other forms of physical attack.

## Benefits:

- All Medeco cylinders are constructed of durable machined brass components, designed to last the life of your equipment.
- Available in single or double switch models, momentary and maintained positions.
- Silver or gold contacts (for low amperage applications) designed to accept quick connect leads.
- Hardened stainless steel inserts inside the cylinder provide the ultimate defense against drilling and other forms of physical attack.
- Unique elevating and rotating tumbler pin system is virtually pick proof.
- Medeco<sup>3</sup> keys may only be duplicated by Medeco or an authorized Medeco service outlet, and only at your request.
- Medeco Switch Locks are completely serviceable, and can be re-keyed in case of lost or stolen keys.
- Locks can be keyed alike, keyed different, or master keyed depending on your specific needs.

## Certification:

- UL 437 Listed
- Switch - UL Registered, CSA Certified

## Applications:

- Medeco High Security Switch Locks can be used in any standard 3/4 inch diameter switch lock application and a multitude of markets including:
  - Heavy Power Machinery
  - Time Delay Safes
  - Material Handling Equipment
  - Construction Vehicles
  - Electrically Accessed Gates
  - Cash Control Systems
  - Encryption Devices
  - Alarms
  - Control Panels
  - ATMs

## Warranty:

Warranted for two (2) years against manufacturer's defects. See the Medeco<sup>®</sup> limited warranty for full details.

## Technical Information:

- Five pin, 3/4 inch double "D" mounting standard.
- Available in either single or double switch models with either silver or gold contacts.
- Rated at 7 amps resistive at 125/250 VAC.
- Contacts designed to accept quick connect leads (AMP connector number 60598-3)

## Finishes:

- 26 satin chrome finish standard.
- Other finishes available, depending on volume.

## Available Key Technologies:

### Mechanical:

– M<sup>3</sup>

**Single Switch Locks**

Description	Part Number	M3
1 switch, maintained 1 keypull	652150T 011 (P)	\$169.03
	652150T 011 (S)	\$140.03
1 switch, maintained 2 keypull	652150T 012 (P)	\$169.03
	652150T 012 (S)	\$140.03
1 switch, momentary 1 keypull	652150T 021 (P)	\$169.03
	652150T 021 (S)	\$140.03

*Pinned price includes two keys.*

**Double Switch Locks**

Description	Part Number	M3
2 position, maintained, 1 keypull	652650T 101 (P)	\$274.57
	652650T 101 (S)	\$245.57
2 position, maintained, 2 keypull	652650T 102 (P)	\$274.57
	652650T 102 (S)	\$245.57
2 position, momentary, 1 keypull	652650T 111 (P)	\$274.57
	652650T 111 (S)	\$245.57
3 position, maintained, 1 keypull	652650T 131 (P)	\$274.57
	652650T 131 (S)	\$245.57
3 position, maintained, 2 keypull	652650T 132 (P)	\$274.57
	652650T 132 (S)	\$245.57
3 position, maintained, 3 keypull	652650T 133 (P)	\$274.57
	652650T 133 (S)	\$245.57

*Pinned price includes two keys.*

**Switch Lock Accessories for 652150 and 652650**

Description	Part Number	Price
Silver Sub Miniature Snap Action Switch: Double Pole/Double Throw	CP-150082	\$74.20
Gold Sub Miniature Snap Action Switch: Double Pole/Double Throw	CP-150102	\$98.40
Sleeve Kit: Includes chrome plated zinc sleeve with rubber grommet, plain washer, 1 pronged washer locks for mounting Cam Locks in harsh environments.	650003	\$54.10
Silver Sub Miniature Snap Action Switch: Single Pole-Single or Double Throw	CP-150142	\$37.40
Gold Sub Miniature Snap Action Switch: Single Pole-Single or Double Throw	CP-150152	\$53.50
4" Leadwire	CP-270511	\$2.60
6" Leadwire	CP-270521	\$3.00
12" Leadwire	CP-270531	\$3.81
18" Leadwire	CP-270541	\$4.78
24" Leadwire	CP-270551	\$10.20
36" Leadwire	CP-270561	\$10.20
3/4" hex nut for Switch Locks	CP-050050	\$3.55

(P) = Pinned (combined)

(S) = Sub-assembled (uncombined)

Surcharges for Master Keying, Custom Coining and Custom Stamping apply, see page 196.  
Refer to the XT and CLIQ Intelligent Key sections for format availability and pricing.

# Rotary Switch Locks

The Medeco® rotary Switch Locks is designed for use with most brands of rotary switches, providing maximum versatility in systems requiring multiple switch functions. Switch Locks are available with a variety of key withdrawals at 45° increments. Positive stops are available to eliminate over-torquing of switch stops. Switch Locks use a five pin cylinder to maximize keyed different and master keying capabilities. Medeco design and engineering resources are available to assist customers with special functional requirements. The Medeco<sup>3</sup> unique design provides triple locking action, making the locks virtually pick proof. All Medeco<sup>3</sup> keys and locks are protected under patent, trademark and copyright laws. Medeco<sup>3</sup> keys may only be duplicated by Medeco or by an authorized Medeco dealer, and only at your request.



## Patented Key Control

Protects against unauthorized duplication of your keys.



## Available in Intelligent Key

Medeco Switch Locks are also available with Medeco Intelligent Keys for loss & liability control.



## Can Be Master Keyed

Medeco switch locks can be keyed alike, keyed different or master keyed.



## Protection From Physical Attack

Medeco<sup>3</sup> switch locks stand up to drilling, picking and other forms of physical attack.

## Benefits:

- All Medeco cylinders are constructed of durable machined brass components, designed to last the life of your equipment.
- Hardened stainless steel inserts inside the cylinder provide the ultimate defense against drilling and other forms of physical attack.
- Unique elevating and rotating tumbler pin system is virtually pick proof.
- Patented Medeco<sup>3</sup> keys may only be duplicated by Medeco or an authorized Medeco service outlet, and only at your request.
- Medeco Switch Locks are completely serviceable, and can be re-keyed in case of lost or stolen keys.
- Locks can be keyed alike, keyed different, or master keyed depending on your specific needs.

## Warranty:

Warranted for two (2) years against manufacturer's defects. See the Medeco limited warranty for full details.

## Technical Information:

- Five pin, 3/4 inch double "D" mounting standard.

## Finishes:

- 26 satin chrome finish standard.
- Other finishes available, depending on volume.

## Certification:

- Switch - UL Registered, CSA Certified

## Applications:

- Medeco Rotary Switch Locks can be used to retrofit many Switch Lock applications including:
  - Heavy Power Machinery
  - Time Delay Safes
  - Material Handline Equipment
  - Construction Vehicles
  - Electrically Accessed Gates
  - Cash Control Systems
  - Encryption Devices
  - Alarms
  - Control Panels
  - ATMs

## Available Key Technologies:

### Mechanical:

– M<sup>3</sup>

### Intelligent Key:

– Medeco XT



**Operation Codes**

Description	Part Number	M3
2 position, 1 keypull A, maintained at B	6522560T 121 (P)	\$164.85
	6522560T 121 (S)	\$135.85
2 position, 2 keypull A&B, maintained	6522560T 122 (P)	\$164.85
	6522560T 122 (S)	\$135.85
3 position, 2 keypull A&B, maintained	6522560T 132 (P)	\$164.85
	6522560T 132 (S)	\$135.85
3 position, 3 keypull A, B&C, maintained	6522560T 133 (P)	\$164.85
	6522560T 133 (S)	\$135.85
3 position, 2 keypull A&C, maintained at B	6522560T 134 (P)	\$164.85
	6522560T 134 (S)	\$135.85
2 position, 1 keypull A, momentary at B	6522560T 221 (P)	\$164.85
	6522560T 221 (S)	\$135.85

*Pinned price includes two keys.*

(P) = Pinned (combined)

(S) = Sub-assembled (uncombined)

Surcharges for Master Keying, Custom Coining and Custom Stamping apply, see page 196.  
Refer to the XT and CLIQ Intelligent Key sections for format availability and pricing.