

SN200/210 Series

Integrated Wired Access Control and PIV Compatible Solutions



Table of Contents

Table of Contents	3
How to Order Parts	3
Finishes	4
Credential Modifier	4
Outside Electrical Trim	4
Reader and Harness Assembly Options Parts Table	5
8200 Series Mortise Locks	6
8200 Series Mortise Locks Parts Table	7
10 Line Cylindrical Locks	8
10 Line Cylindrical Locks Parts Table	9
10X Line Cylindrical Locks	10
10X Line Cylindrical Locks Parts Table	11
8600 Concealed Vertical Rod (CVR) Exit Device	12
8600 Concealed Vertical Rod (CVR) Exit Device Parts Table	13
8700 Surface Vertical Rod (SVR) Exit Device	14
8700 Surface Vertical Rod (SVR) Exit Device Parts Table	15
8800 Exit Device	16
8800 Exit Device Parts Table	17
8900 Mortise Exit Device	18
8900 Mortise Exit Device Parts Table	19
7000 Series	20
7000 (ELR) Series	21
7000 Series Parts Table	22

How to Order Parts

1. In order to simplify the ordering procedure and maintain regulatory compliance, parts are only available as listed.
2. To order parts, provide the appropriate quantity, part number, hand and/or finish (when required) and description as directed and illustrated below.

Finishes

	Finishes	ANSI	Mortise	Cyl.	Exit
03	Bright Brass	605	X	X	X
04	Satin Brass	606	X	X	X
09	Bright Bronze	611	X	X	X
10	Satin Bronze, Clear Powder Coat	612	X	X	X
10B	Oxidized Satin Bronze Oil Rubbed	613	X	X	X
10BE	Dark Oxidized Satin Bronze - equivalent	613E	X	X	X
10BL	Oxidized Satin Bronze, Clear Powder Coat	–	X	X	X
14*	Bright Nickel, Clear Coated	618	X	X	X
15*	Satin Nickel, Clear Coated	619	X	X	X
20D	Dark Statuary Bronze, Clear Powder Coat	–	X	X	X
26*	Bright Chrome	625	X	X	X
26D*	Satin Chrome	626	X	–	X
32**	Bright Stainless Steel	629	X	–	X
32D**	Satin Stainless Steel	630	X	X	X
BSP	Black Suede Powder Coat	–	X	X	X
WSP	White Suede Powder Coat	–	X	X	X

* ET Trim will be supplied with the requested finish, the Exit Devices will be supplied in 32 or 32D accordingly

** Only available with Exit Devices, the external trim will be supplied in 26 or 26D accordingly

Credential Modifier

03	UL294 Compliant, tamper wire connected FIPS/FIKPS: 200-bit output
0E	Non-UL294 Compliant, green LED wire connected BIS, BIKS, BIPS, BIKPS only
04	UL294 Compliant, tamper wire connected FIPS/FIKPS: 75-bit output
0D	UL294 Compliant, tamper wire connected FIPS/FIKPS: 128-bit output
0F	Non-UL294 Compliant, green LED wire connected FIPS/FIKPS: 200-bit output
0G	Non-UL294 Compliant, green LED wire connected FIPS/FIKPS: 75-bit output
0H	Non-UL294 Compliant, green LED wire connected FIPS/FIKPS: 128-bit output

Outside Electrical Trim

BIS*	HID Mobile Access® Ready and Bluetooth Smart capable; High Frequency credentials ONLY supported
BIKS*	HID Mobile Access® Ready and Bluetooth Smart capable with keypad; High Frequency credentials ONLY supported
BIPS*	HID Mobile Access® Ready and Bluetooth Smart capable; High and Low Frequency credentials supported
BIKPS*	HID Mobile Access® Ready and Bluetooth Smart capable with keypad; High and Low Frequency credentials supported
FIPS***	PIV compatible
FIKPS***	PIV compatible with Keypad

*SN210 BIS, BIKS, BIPS, and BIKPS only available with 0E credential modifier; SN210 FIPS and FIKPS only available with 03 or 0D credential modifier

** With SN Series the reader is always 12VDC. Please select either 12VDC or 24VDC for the lock voltage.

*** Please contact your local Door Security Solutions representative for FIPS and FIKPS availability.

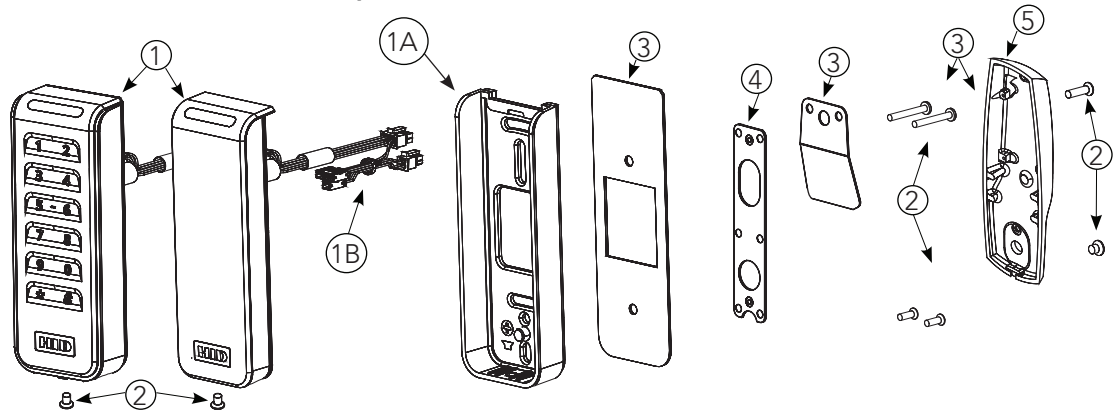
Reader and Harness Assembly

SN200/210

SARGENT

ASSA ABLOY

Reader and Harness Assembly Options Parts Table



ITEM	PART #	DESCRIPTION	REQ.
1	52-6166	SN200 BIPS-03 Reader & Harness Assembly - Wiegand (UL294/TAMPER Configuration)	1
	52-6027	SN200 BIPS-0E Reader & Harness Assembly - Wiegand (Non-UL294 Configuration)	
	52-6167	SN200 BIKPS-03 Reader & Harness Assembly - Keypad, Wiegand (UL294/TAMPER Configuration)	
	52-6028	SN200 BIKPS-0E Reader & Harness Assembly - Keypad, Wiegand (Non-UL294 Configuration)	
	52-6189	SN200 FIPS-03 Reader & Harness Assembly - Wiegand - 200-bit output (UL294/TAMPER Configuration)	
	52-6190	SN200 FIPS-04 Reader & Harness Assembly - Wiegand - 75-bit output (UL294/TAMPER Configuration)	
	52-6191	SN200 FIPS-0D Reader & Harness Assembly - Wiegand - 128-bit output (UL294/TAMPER Configuration)	
	52-6192	SN200 FIPS-0F Reader & Harness Assembly - Wiegand - 200-bit output (Non-UL294 Configuration)	
	52-6193	SN200 FIPS-0G Reader & Harness Assembly - Wiegand - 75-bit output (Non-UL294 Configuration)	
	52-6194	SN200 FIPS-0H Reader & Harness Assembly - Wiegand - 128-bit output (Non-UL294 Configuration)	
	52-6195	SN200 FIKPS-03 Reader & Harness Assembly - Keypad, Wiegand - 200-bit output (UL294/TAMPER Configuration)	
	52-6196	SN200 FIKPS-04 Reader & Harness Assembly - Keypad, Wiegand - 75-bit output (UL294/TAMPER Configuration)	
	52-6197	SN200 FIKPS-0D Reader & Harness Assembly - Keypad, Wiegand - 128-bit output (UL294/TAMPER Configuration)	
	52-6198	SN200 FIKPS-0F Reader & Harness Assembly - Keypad, Wiegand - 200-bit output (Non-UL294 Configuration)	
	52-6199	SN200 FIKPS-0G Reader & Harness Assembly - Keypad, Wiegand - 75-bit output (Non-UL294 Configuration)	
	52-6200	SN200 FIKPS-0H Reader & Harness Assembly - Keypad, Wiegand - 128-bit output (Non-UL294 Configuration)	
	52-6201	SN200 FIPS-03 Reader & Harness Assembly - OSDP - 200-bit output	
	52-6203	SN200 FIPS-0D Reader & Harness Assembly - OSDP - 128-bit output	
	52-6204	SN200 FIKPS-03 Reader & Harness Assembly - OSDP - 200-bit output	
	52-6206	SN200 FIKPS-0D Reader & Harness Assembly - OSDP - 128-bit output	
	52-6031	SN210 BIPS-0E Reader & Harness Assembly - OSDP	
	52-6032	SN210 BIKPS-0E Reader & Harness Assembly - Keypad, OSDP	
	52-6201	SN210 FIPS-03 Reader & Harness Assembly - OSDP - 200-bit output	
	52-6203	SN210 FIPS-0D Reader & Harness Assembly - OSDP - 128-bit output	
	52-6204	SN210 FIKPS-03 Reader & Harness Assembly - Keypad, OSDP - 200-bit output	
	52-6206	SN210 FIKPS-0D Reader & Harness Assembly - Keypad, OSDP - 128-bit output	
	52-6281	SN200 Reader & Harness Assembly - Wiegand (BIS-03, Silver)	
	52-6282	SN200 Reader and Harness Assembly - Keypad, Wiegand (BIKS-03, Silver)	
	52-6283	SN200 Reader & Harness Assembly - Wiegand (BIS-0E, Silver)	
	52-6284	SN200 Reader & Harness Assembly - Keypad, Wiegand (BIKS-0E, Silver)	
	52-6285	SN210 Reader & Harness Assembly - OSDP (BIS, Silver)	
	52-6286	SN210 Reader & Harness Assembly - Keypad, OSDP (BIKS, Silver)	

Reader and Harness Assembly Options Parts Table (continued)

ITEM	PART #	DESCRIPTION	REQ.
1A	--	Signo Reader Back Plate	1
1B	52-6012	Signo Wiring Harness ONLY - Wiegand (non-UL294 Configuration)	1
	52-6164	Signo Wiring Harness ONLY - Wiegand/OSDP (UL294/TAMPER Configuration)	
2	52-4539	Screw Pack, SE Series	1
		8-18 x 1/2" PH Flat HD Undercut Drilling Screw	4
		8-32 x 5/8" PH Flat HD Undercut Machine Screw	2
		8-32 x 1/4" PH Flat HD Undercut Machine Screw	1
		8-32 x 1" PH Flat HD Machine Screw	2
		6-32 x 3/8" T10 Security Torx Flat Head Machine Screw	1
		8-18 x 5/8" PH Flat HD Undercut Drilling Screw	2
3	52-6055	SN200/210 Standard Fire Kit	1
		Fire Plate	1
		Fire Shield (SN200/SN210)	1
		#8x1 1/4" Phillips Pan Head Drilling Screw	2
		Solder Sleeve	1
4*	--	Inside Mounting Plate	1
5*	--	Inside Escutcheon	1

* See each lock type for specific part numbers

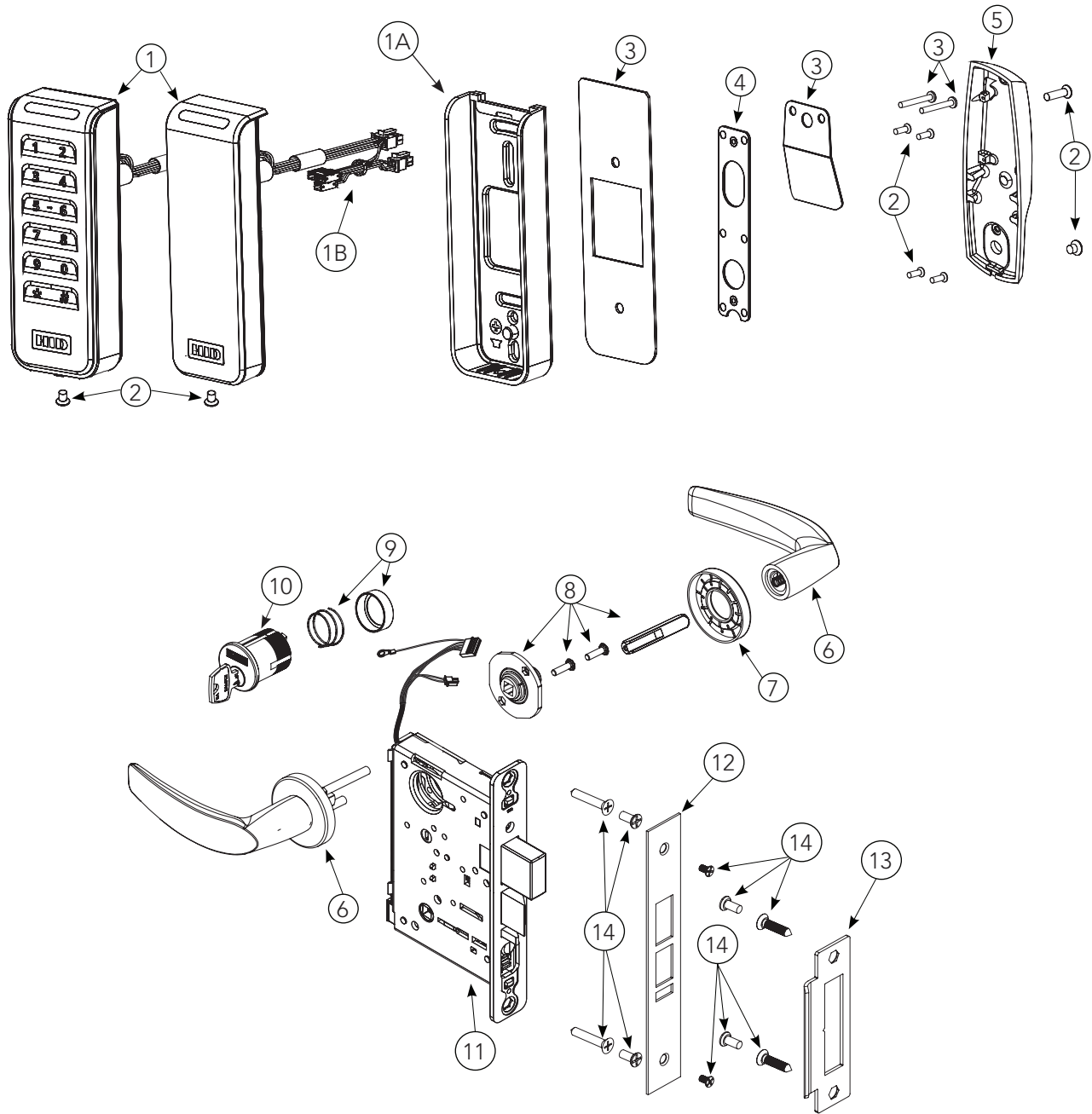
8200 Series Mortise Locks

SN200/210

SARGENT

ASSA ABLOY

8200 Series Mortise Locks



8200 Series Mortise Locks Parts Table

ITEM	PART #	DESCRIPTION	Req.
1*	–	Reader & Harness Assembly	1
1A	–	Signo Reader Back Plate	1
1B*	–	Signo Wiring Harness ONLY	1
2*	–	Screw Pack , SE Series	1
3*	–	SN200/210 Standard Fire Kit	1
4	52-5218	Inside Mounting Plate	1
5	52-5196	Inside Escutcheon With Thumb Turn	1
	82-0706	Inside Escutcheon Without Thumb Turn	
6	–	Reference SN200/210 Catalog For Available Lever Styles	1
7	–	Reference SN200/210 Catalog For Available Rose Styles	1
8	82-3211	Trim Pack - 8200 Standard Levers (shown)	1
		<i>I/S Lever Adapter & Plate Assembly</i>	1
		<i>Spindle (for 1 3/4" thru 2" thick doors)</i>	1
		<i>Machine Screw (82-32 x 5/8" long)</i>	2
	82-5357	Trim Pack - 8200 Deco Levers & 7900 all lever styles	1
9	–	Rosette Spring Assembly	1
10	–	Cylinder (Size 41)	1
11	Lock Body**	82270-12/24 VDC x Finish w/out Deadbolt, Fail Safe	1
		82271-12/24 VDC x Finish w/out Deadbolt, Fail Secure	1
		82272-12/24 VDC x Finish w/out Deadbolt, Fail Safe, Both Levers Lock	1
		82273-12/24 VDC x Finish w/out Deadbolt, Fail Secure, Both Levers Lock***	1
		82280-12/24 VDC x Finish w/ Deadbolt, Fail Safe	1
		82281-12/24 VDC x Finish w/ Deadbolt, Fail Secure	1
		82282-12/24 VDC x Finish w/ Deadbolt, Fail Safe, Both Levers Lock	1
		82283-12/24 VDC x Finish w/ Deadbolt, Fail Secure, Both Levers Lock***	1
12	82-0579	Outside Faceplate w/ Deadbolt	1
	82-0578	Outside Faceplate w/out Deadbolt	1
13	82-0110	Strike Plate	1
14	77-4236	Lock Body and Strike Screw Pack	2
		<i>Machine Screw (Outside Front)</i>	1
		<i>Machine Screw (Strike/Lockbody)</i>	4
		<i>Wood Screw (Strike)</i>	2
		<i>Wood Screw (Lockbody - Wood Door)</i>	2
15	A8123	Field Prep Template (not shown)	1
16	4702	Door Manufacturer Template (not shown)	1
17	A8283	Installation Instructions (not shown)	1
18	A8129	Outside Field Prep template (not shown)	1

* See Reader and Harness Assembly Options for specific part numbers

** For End-of-Line Resistor and PHR options, please consult factory

*** **CAUTION:** Not recommended for use on any door used for Life Safety Egress

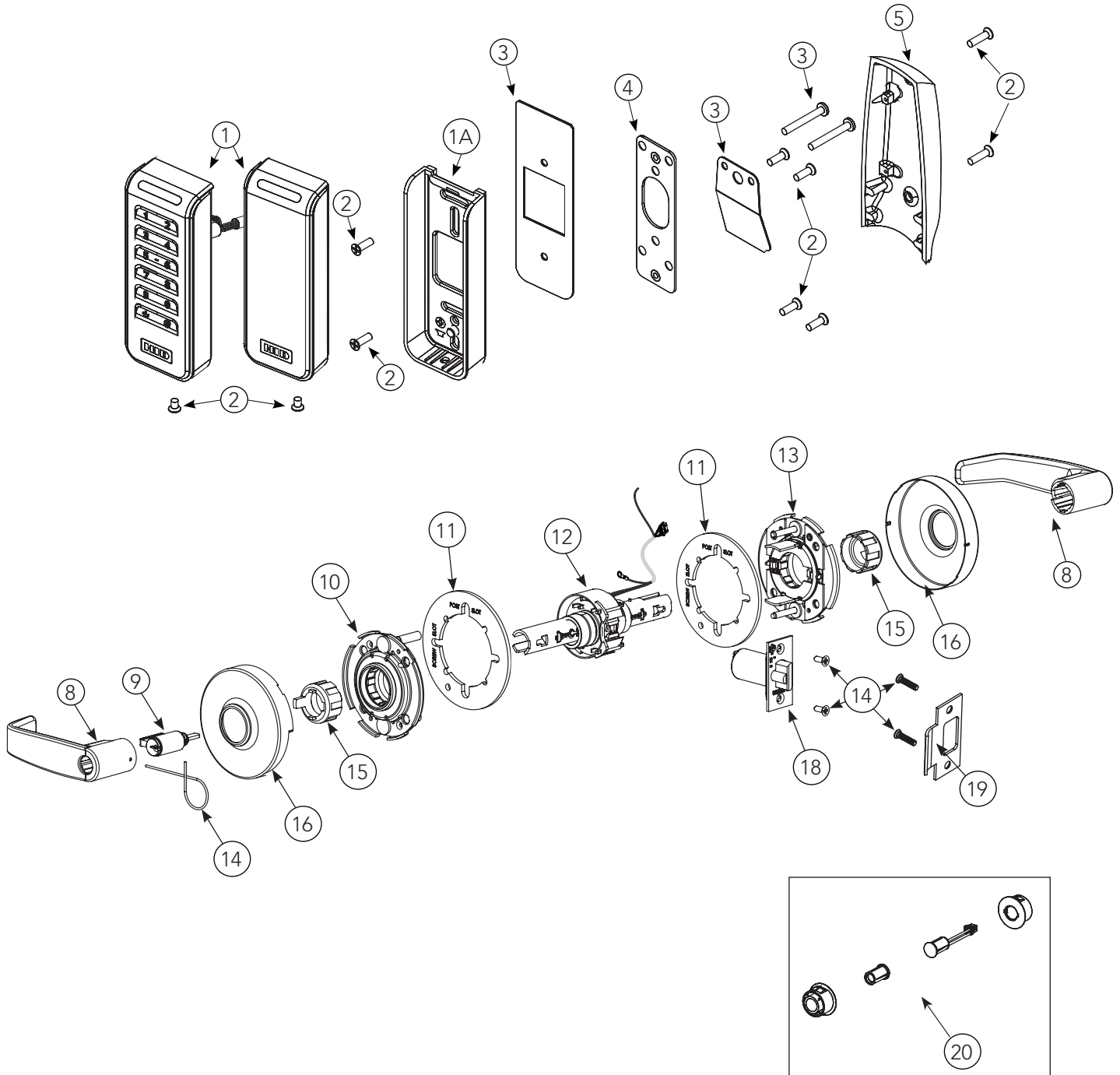
10 Line Cylindrical Locks

SN200/210

SARGENT

ASSA ABLOY

10 Line Cylindrical Locks



Copyright © 2023, SARGENT Manufacturing Company. All rights reserved. Reproduction in whole or in part without the express written permission of SARGENT Manufacturing Company is prohibited. Patent pending and/or patent www.assaabloydss.com/patents.

A8363A 03/23

10 Line Cylindrical Locks Parts Table

ITEM	PART #	DESCRIPTION	REQ.
1*	–	Reader & Harness Assembly	1
1A	–	Signo Reader Back Plate	1
1B*	–	Signo Wiring Harness ONLY (not shown)	1
2*	–	Screw Pack, SE Series	1
3*	–	SN200/210 Standard Fire Kit	1
4	52-5219	Inside Mounting Plate	1
5	10-0851	Inside Escutcheon	1
8	–	Refer to SN200/210 Catalog for Available Lever Styles	1
9	–	Refer to SN200/210 Catalog for Available Cylinders	1
10	10-3049	Outside Rose Spring Assembly	1
11**	10-0850	Adapter Plate (inside/outside): Only shipped with 1-3/8" doors	2
12	NOTE:	See Lock Body table	
13	10-3048	Inside Rose Spring Assembly	1
14	10-2052	Screw Pack	1
		#8 x 3/4 PH FL U'C Comb Screw	4
		#6-20 x 3/4" Phillips Pan Head Self Drilling Screw	2
		Std Stk Box (for T-Strike)	1
		Lever Ret Key	1
15	10-0792	Spacer Bushing	2
16	–	Refer to SN200/210 Catalog for Available Rose Styles	1
18	10-3192	Latch Assembly: Standard	1
	10-3186	Latch Assembly: 2 3/4" Backset (20 Function)	1
	10-2053	Latch Assembly: 3 3/4" Backset (23 Function)	1
	10-2058	Latch Assembly: 5" Backset (25 Function)	1
	10-2634	Latch Assembly: 3/4" Throw (41 Function)	1
19	08-0312	Strike	1
19A	08-0066	Strike (28-)	1
20	52-5373	Door Position Switch Kit	
21	A8124	Field Prep Template (not shown)	1
22A	4703	Metal/Wood Door Manufacturer Template (not shown)	1
22B	A8129	Outside Field Prep Template (not shown)	1
23	A8282	Installation Instructions	1

* See Reader and Harness Assembly Options for specific part numbers

** Adapter Plate/Spacer (10-0847) is only shipped with orders that specify 1-3/8" doors.

Lockbody Table

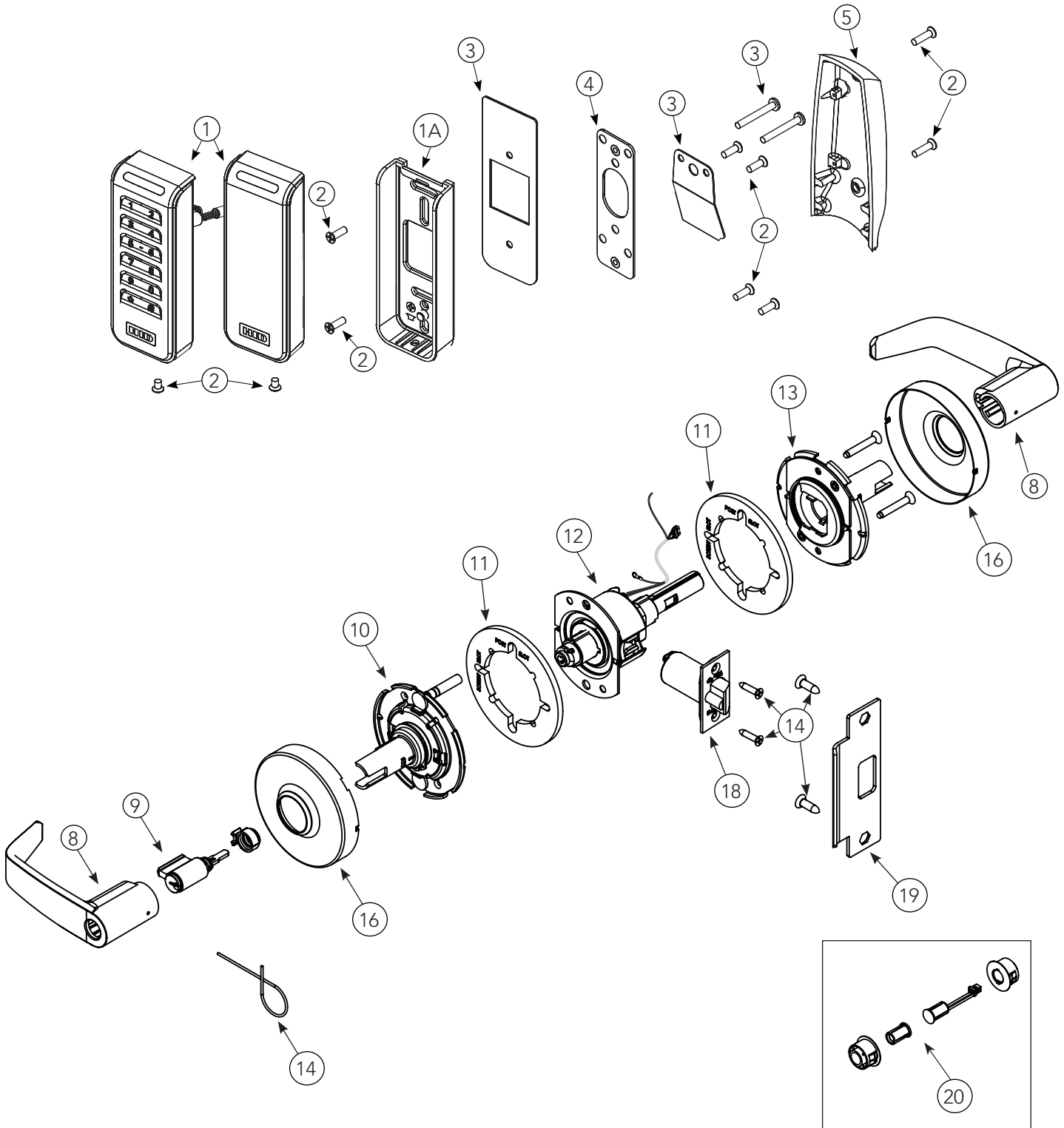
ITEM	PART #	DESCRIPTION	REQ.
12	(STD, 10, 10-21, 11, 11-21, 21, 22, SC, SE, VA, VS) CYL Lockbodies		
	10-3360	10G270-24V Fail Safe Lock Body Assembly	1
	10-3364	10G271-24V Fail Secure Lock Body	1
	10-3361	10G270-12V Fail Safe Lock Body Assembly	1
	10-3365	10G271-12V Fail Secure Lock Body	1
12A	(60, 63, 64) CYL Lockbodies		
	10-3368	10G270-24V Fail Safe Lock Body Assembly	1
	10-3372	10G271-24V Fail Secure Lock Body	1
	10-3369	10G270-12V Fail Safe Lock Body Assembly	1
	10-3373	10G271-12V Fail Secure Lock Body	1
12B	(70, 72, 73, 73-7P, 65-73, 65-73-7P, 11-73-7P, 11-65-73-7P) CYL Lockbodies		
	10-3376	10G270-24V Fail Safe Lock Body Assembly	1
	10-3380	10G271-24V Fail Secure Lock Body	1
	10-3377	10G270-12V Fail Safe Lock Body Assembly	1
	10-3381	10G271-12V Fail Secure Lock Body	1
12C	(82) CYL Lockbodies		
	10-3384	10G270-24V Fail Safe Lock Body Assembly	1
	10-3388	10G271-24V Fail Secure Lock Body	1
	10-3385	10G270-12V Fail Safe Lock Body Assembly	1
	10-3389	10G271-12V Fail Secure Lock Body	1
12D	(SF) CYL Lockbodies		
	10-3392	10G270-24V Fail Safe Lock Body Assembly	1
	10-3396	10G271-24V Fail Secure Lock Body	1
	10-3393	10G270-12V Fail Safe Lock Body Assembly	1
	10-3397	10G271-12V Fail Secure Lock Body	1

Copyright © 2023, SARGENT Manufacturing Company. All rights reserved. Reproduction in whole or in part without the express written permission of SARGENT Manufacturing Company is prohibited. Patent pending and/or patent www.assaabloydss.com/patents.

10X Line Cylindrical Locks

SN200/210

10X Line Cylindrical Locks



Copyright © 2023, SARGENT Manufacturing Company. All rights reserved. Reproduction in whole or in part without the express written permission of SARGENT Manufacturing Company is prohibited. Patent pending and/or patent www.assaabloydss.com/patents.

10X Line Cylindrical Locks Parts Table

ITEM	PART #	DESCRIPTION	REQ.
1*	–	Reader & Harness Assembly	1
1A	–	Signo Reader Back Plate	1
1B*	–	Signo Wiring Harness ONLY (not shown)	1
2*	–	Screw Pack, SE Series	1
3*	–	SN200/210 Standard Fire Kit	1
4	52-5219	Inside Mounting Plate	1
5	10-0851	Inside Escutcheon	1
8	–	Refer to SN200/210 Catalog for Available Lever Styles	1
9	–	Refer to SN200/210 Catalog for Available Cylinders	1
10	10-3049	Outside Rose Spring Assembly	1
11**	10-0850	Adapter Plate (inside/outside): Only shipped with 1-3/8" doors	2
12	10-3765	Standard Lock Body (1-3/8" -2")	1
	10-3799	Standard Lock Body (2" - 2-1/4") (31prefix)	1
	10-3766	Freewheeling Lock Body (1-3/8"-2")	1
	10-3800	Thicker door (2" - 2-1/4")	1
13	10-3048	Inside Rose Spring Assembly	1
14	10-1224	Screw Pack	1
		#8 x 3/4" Phillips Flathead UnderCut Comb Screw	2
		12-24 x 3/4" Phillips Flathead Under-Cut	2
		Lever Retainer Key	1
		Machine Screw (Special)	2
16	–	Refer to SN200/210 Catalog for Available Rose Styles	1
18	10-3192	Latch Assembly: Standard	1
	10-3186	Latch Assembly: 2-3/4" Backset (20 Function)	1
	10-2053	Latch Assembly: 3-3/4" Backset (23 Function)	1
	10-2058	Latch Assembly: 5" Backset (25 Function)	1
	10-2634	Latch Assembly: 3/4" Throw (41 Function)	1
19	08-0312	Strike	1
19A	08-0066	Strike (28-)	1
20	52-5373	Door Position Switch Kit	
21	A8124	Field Prep Template (not shown)	1
22A	4703	Metal/Wood Door Manufacturer Template (not shown)	1
22B	A8129	Outside Field Prep Template (not shown)	1
23	A8353	Installation Instructions	1

* See Reader and Harness Assembly Options for specific part numbers

** Adapter Plate/Spacer (10-0847) is only shipped with orders that specify 1-3/8" doors.

80 Series Exit Devices

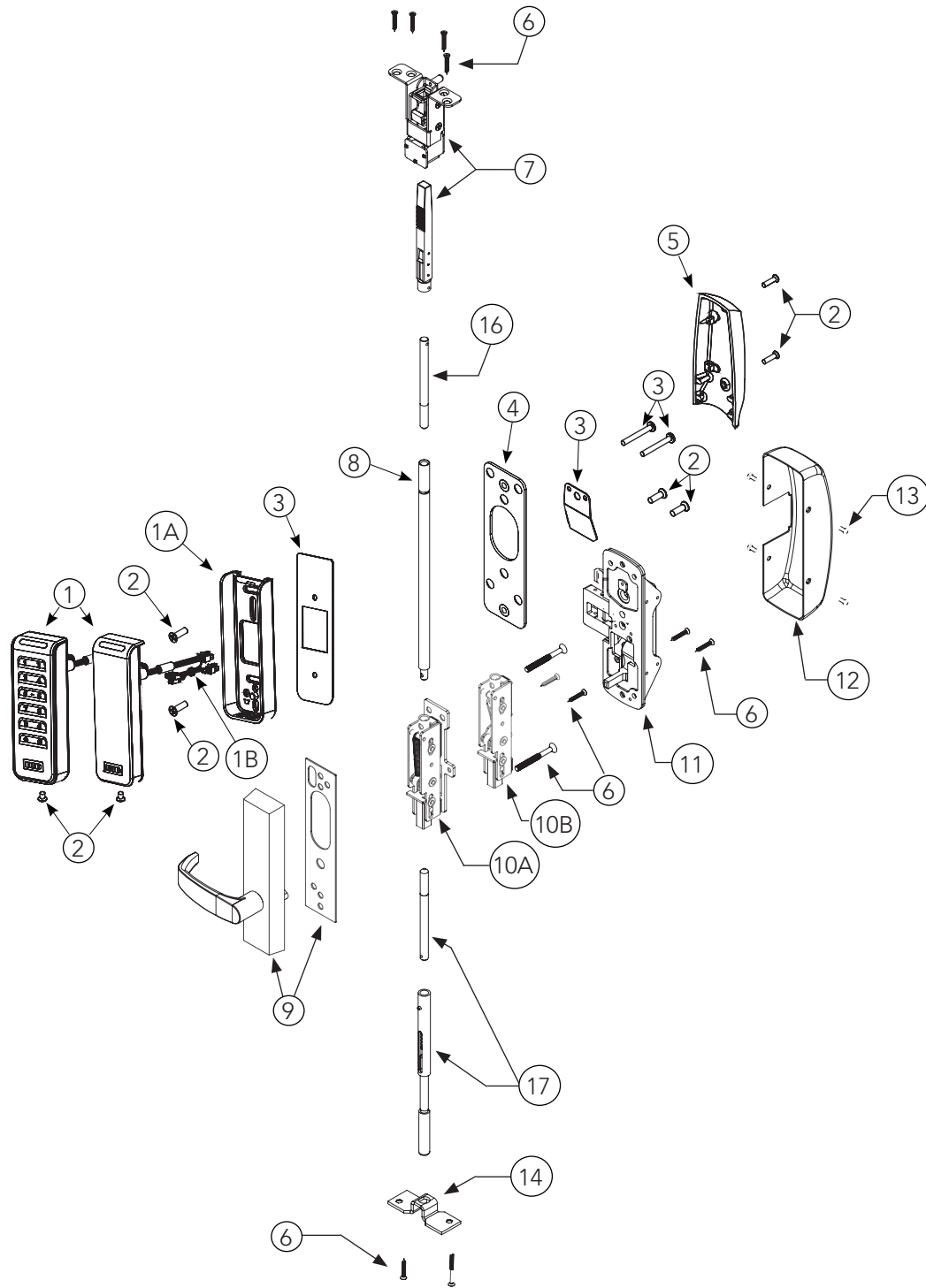
SN200/210

SARGENT

ASSA ABLOY

8600 Concealed Vertical Rod (CVR) Exit Device

Left Hand Reverse Door Shown



8600 Concealed Vertical Rod (CVR) Exit Device Parts Table

ITEM	PART #	DESCRIPTION	REQ.
1*	–	Reader & Harness Assembly	1
1A	–	Signo Reader Back Plate	1
1B*	–	Signo Wiring Harness ONLY	1
2*	–	Screw Pack, SE Series	1
3*	–	SN200/210 Standard Fire Kit	1
4	52-5219	Inside Mounting Plate	1
5	68-1581	Inside Escutcheon	1
6	68-3577	Chassis Wood Door (WD) Screw Pack	1
		#10x1 1/4" Phillips Flat Head Wood Screw	6
		#12x2" Phillips Flat Head Wood Screw	6
		Bar Locking Key	1
		#10-24x3/8" Phillips Fillister Head Screw	1
	68-3905	Chassis Metal Door (MD) Screw Pack (not shown) Chassis Cover Screw Pack B	1
		CR-OHMS #8-32 x 5/16" with #6 Head	8
		CR-THMS 8-32 x 3/8	2
7	68-7057	WD 8600 Top Assembly	1
	68-7060	MD/AD 8600 Top Assembly (not shown)	1
8	94-0212	Aux Control Rod Adapter	1
9**	Trim (ET Trim with gasket shown)*		1
10A	68-3859	WD Inner Case Assembly	1
10B	68-5067	MD/AD Inner Case Assembly	1
11	68-7241	8600 Chassis LHRB	1
	68-7242	8600 Chassis RHRB (not shown)	1
12	68-0407	Chassis Cover	1
13	68-3905	Chassis Cover Screw Pack B	1
		CR-OHMS #8-32 x 5/16" with #6 Head	8
		CR-THMS 8-32 x 3/8	2
14	68-0888	MD/WD Bottom Case	1
	68-0037	AD Bottom Case (not shown)	1
15	3287	DPS Door Position Switch (not shown)	1
16	–	Top rod (consult factory)	1
17	–	Bottom rod (consult factory)	1
18	A8284	Installation Instructions (not shown)	1
19	4704	Wood Door Manufacturer Template (not shown)	1
20	A8129	Outside Field Prep Template (not shown)	1

*See SN200 and SN210 Reader & Harness Assembly Options

**For other outside trim and their part numbers, consult factory.

80 Series Exit Devices

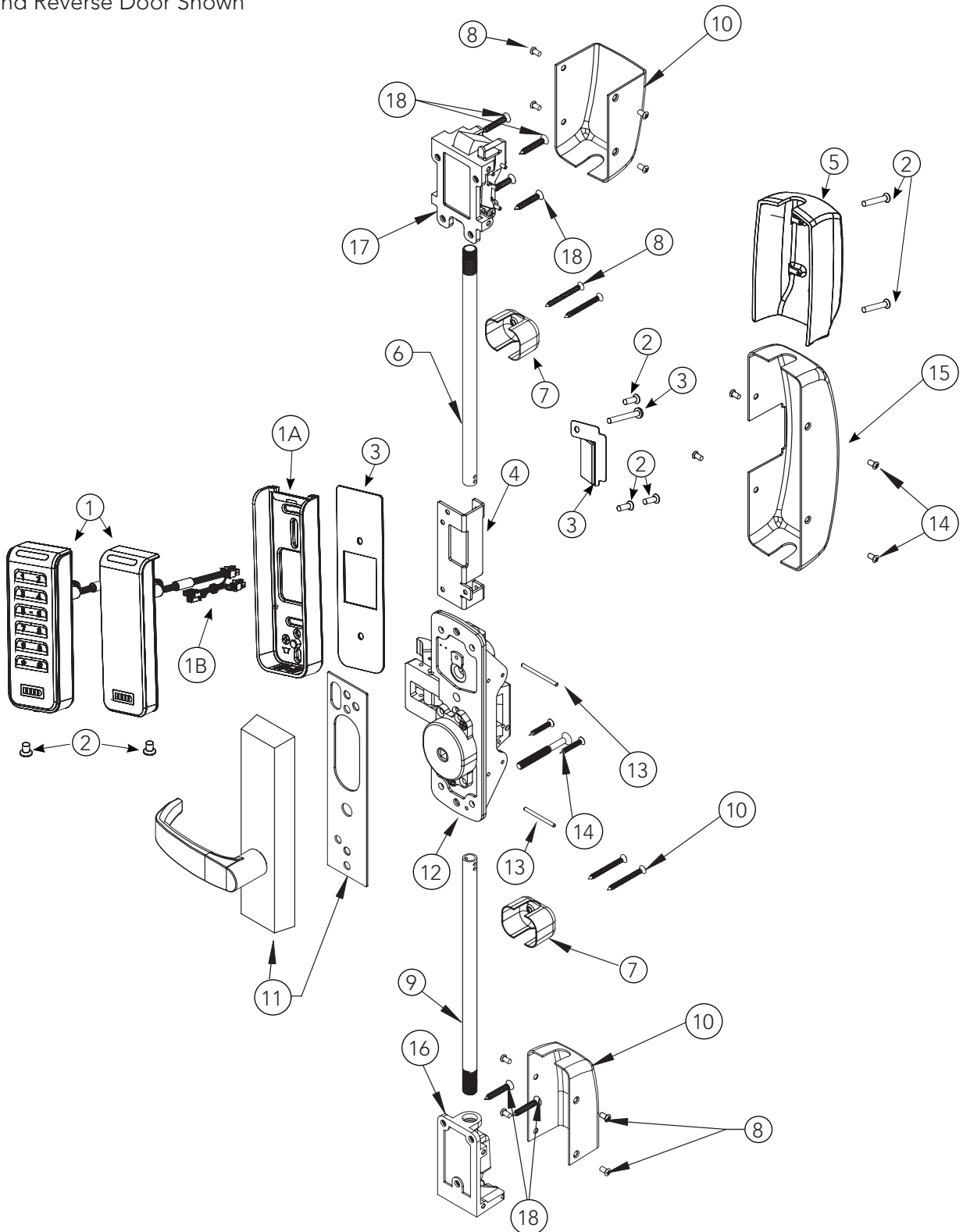
SN200/210

SARGENT

ASSA ABLOY

8700 Surface Vertical Rod (SVR) Exit Device

Left Hand Reverse Door Shown



8700 Surface Vertical Rod (SVR) Exit Device Parts Table

ITEM	PART #	DESCRIPTION	REQ.
1*	–	Reader & Harness Assembly	1
1A	–	Signo Reader Back Plate	1
1B*	–	Signo Wiring Harness ONLY	1
2*	–	Screw Pack, SE Series	1
3	52-6056	SN200/210 8700 Standard Fire Kit	1
		<i>Fire Plate - 8700</i>	1
		<i>Fire Shield (SN200/SN210)</i>	1
		<i>#8x1 1/4" Phillips Pan Head Drilling Screw</i>	2
		<i>Solder Sleeve</i>	1
4	52-0800	Mounting Bracket	1
5	68-1651	Inside Escutcheon	1
6	–	Top Rod (consult factory)	1
7	97-0020	Guide for Rod	2
8	97-3216	Screw Pack for Guide and Covers	2
9	–	Bottom Rod (consult factory)	1
10	97-0018	Case Assembly Cover	2
11**	–	Trim (ET Trim with gasket shown)	1
12	68-7249	NB Chassis Assembly (LHRB)	1
	68-7250	NB Chassis Assembly (RHRB)	1
	68-5864	Chassis Assembly LHRB	1
	68-5865	Chassis Assembly RHRB	1
13	97-0048	Rod Adjustment Pin	2
14	68-3905	Chassis Cover Screw Pack "B"	1
		<i>CR-Oval Head Machine Screw #8-32 x 5/16" w/#6 Head</i>	8
		<i>CR-TH Machine Screw #8-32 x 3/8"</i>	2
	68-2143	Screw Pack "A"	1
		<i>Machine Screw (mounting) #10-24x3/4" Phillips Flat Undercut Head Machine Screw</i>	4
		<i>Wood Screw (mounting)</i>	4
		<i>Bar Locking Key</i>	1
15	68-0405	Chassis Cover	1
16	68-4549	Bottom Case Assembly	1
17	68-4557	Top Case Assembly	1
18	68-5420	Screw Pack (Top and Bottom Cases)	1
		<i>Wood Screw (10 x 1 1/4")</i>	6
		<i>Machine Screw, U/C Flat Head (10-24 x 3/4")</i>	6
19	3287	Door Position Switch (not shown)	1
20	A8284	Installation Instructions (not shown)	1
21	4705	Metal/Wood Door Manufacturer Template (not shown)	1
22	A8125	Field Prep Template (not shown)	1
23	A8129	Outside Field Prep Template (not shown)	1
24	A8126	Field Prep Template NB- (not shown)	1

*See SN200 and SN210 Reader & Harness Assembly options

**For other outside trim and their part numbers, consult factory.

80 Series Exit Devices

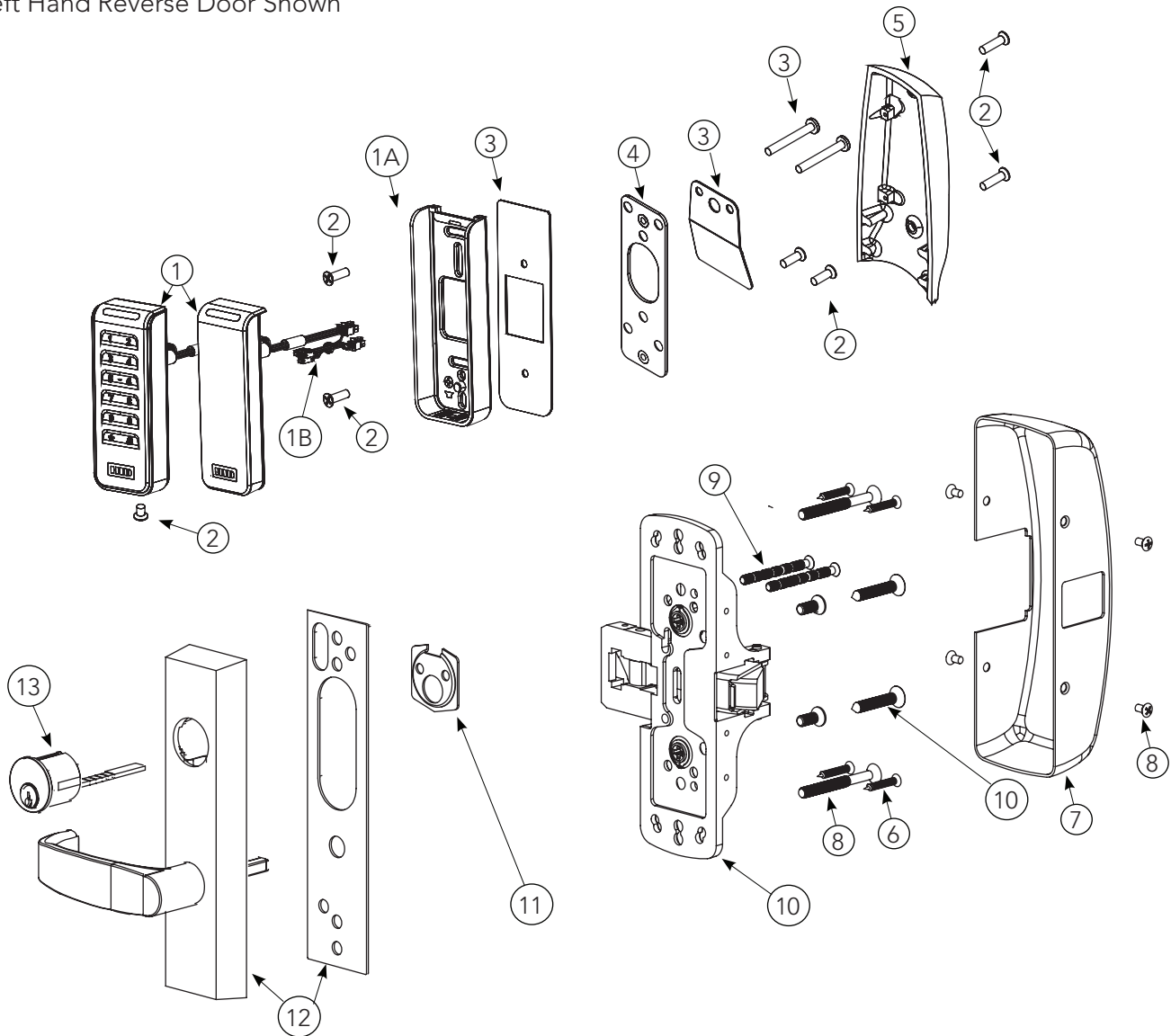
SN200/210

SARGENT

ASSA ABLOY

8800 Exit Device

Left Hand Reverse Door Shown



How to Specify ET Trim

How to order without an exit device.

Specify: 7 for 700 Series ET, Function, Suffix, Lever, Finish and handing (e.g., 775-8 ETL x 26D x RHRB).

Note: Suffix requirements are based on type of device to be used:

- -8 suffix is required for 8800, 8500, NB8700, PP, PR and SP8700 devices, except with these functions: 04, 10, 16, 40 and 44.
- -6 suffix is required for all PP, PR, SP, LP, LR and LS devices.
- -4 suffix is required for all 8400, WD, MD and AD 8600 devices.
- No suffix is necessary for all 8900, 8300, 8700 with bottom rod and 8800, 8500, NB8700, PP, PR & SP8700 devices with these functions: 04, 10, 16, 40 and 44.

8800 Exit Device Parts Table

ITEM	PART #	DESCRIPTION	REQ.
1*	–	Reader & Harness Assembly	1
1A	–	Signo Reader Back Plate	1
1B	–	Signo Wiring Harness ONLY	1
2*	–	Screw Pack, SE Series	1
3*	–	SN200/210 Standard Fire Kit	1
4	52-5219	Inside Mounting Plate	1
5	68-1581	Inside Escutcheon	1
6	68-3905	Screw Pack (Rail and Chassis Cover)	1
		CR-Oval Head Machine Screw #8-32 x 5/16" w/#6 Head	8
		CR-TH Machine Screw #8-32 x 3/8"	2
7	68-0406	Chassis Cover	1
8	68-3922	Screw Pack (Chassis)	1
		Wood Screw #14 x 1 1/2"	2
		Machine Screw 1/4-20 x 5/8"	2
9	13-0074	Cylinder Connecting Screws	2
		#12-24 UNC-2A thread Rim Cylinder Screw	
10	68-7255	8800 Chassis Assembly (Standard)	1
	68-7256	8800 Chassis Assembly (12-)	1
	68-5836	8800 Chassis Assembly (GL)	1
	68-5837	8800 Chassis Assembly (12-, GL)	1
11	13-0086	Cylinder Back Plate (Used with non-Sargent Cylinders)	1
12**	Trim (ET	Trim with gasket shown)	1
13	–	Reference SN200/210 Catalog for Available Cylinders	1
14	3287	DPS Door Position Switch (not shown)	1
15	A8284	Installation Instructions (not shown)	1
16	A8127	Field Template (not shown)	1
17	4707	Manufacturer Template (not shown)	1
18	A8129	Outside Field Prep Template (not shown)	1

*See SN200 and SN210 Reader & Harness Assembly options

**For other outside trim and their part numbers, consult factory.

80 Series Exit Devices

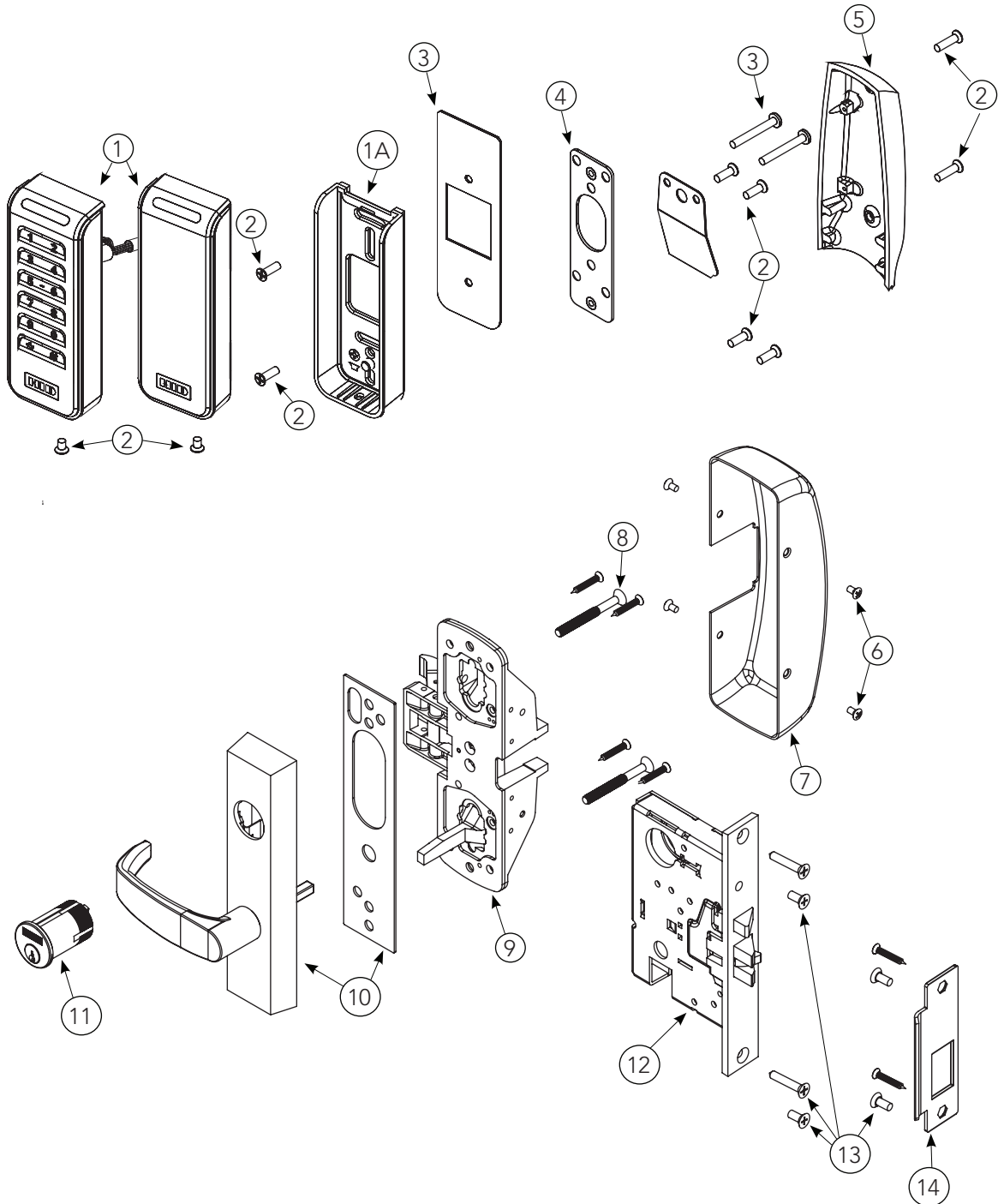
SN200/210

SARGENT

ASSA ABLOY

8900 Mortise Exit Device

Left Hand Reverse Door Shown



Copyright © 2023, SARGENT Manufacturing Company. All rights reserved. Reproduction in whole or in part without the express written permission of SARGENT Manufacturing Company is prohibited. Patent pending and/or patent www.assaabloydss.com/patents.

A8363A 03/23

8900 Mortise Exit Device Parts Table

ITEM	PART #	DESCRIPTION	REQ.
1*	–	Reader & Harness Assembly	1
1A	–	Signo Reader Back Plate	1
1B*	–	Signo Wiring Harness ONLY	1
2*	–	Screw Pack, SE Series	1
3*	–	SN200/210 Standard Fire Kit	1
4	52-5219	Inside Mounting Plate	1
5	68-1581	Inside Escutcheon	1
6	68-3905	Screw Pack (Rail and Chassis Cover)	1
		CR-OHMS #8-32 x 5/16 w/#6 Head	8
		CR-THMS 8-32 x 3/8	2
7	68-0407	Chassis Cover	1
8	68-3922	Screw Pack (Chassis)	1
		Wood Screw #14 x 1-1/2"	2
		Machine Screw 1/4-20 x 5/8"	2
9	68-7253	8900 Chassis Assembly LHRB	1
	68-5754	8900 Chassis Assembly RHRB	1
10**	Trim (ET Trim with gasket shown)		1
11	–	Reference SN200/210 Catalog for Available Cylinders	1
12	915	8900 Lock Body Assembly LHRB	1
	915	8900 Lock Body Assembly RHRB	1
13	99-2628	Screw Pack (Mortise Lock)	1
		12-24 x 1/2 PH LF HD Undercut Screw	2
		12 x 1 PH FLT HD WD SCR FT	2
14		Strike Pack (Specify Bevel and Lip Length)	1
15	3287	Door Position Switch (not shown)	1
16	A8284	Installation Instructions (not shown)	1
17	A8128	Field Prep Template (not shown)	1
18	4708	Manufacturer Template (not shown)	1
19	A8129	Outside Field Prep Template (not shown)	1

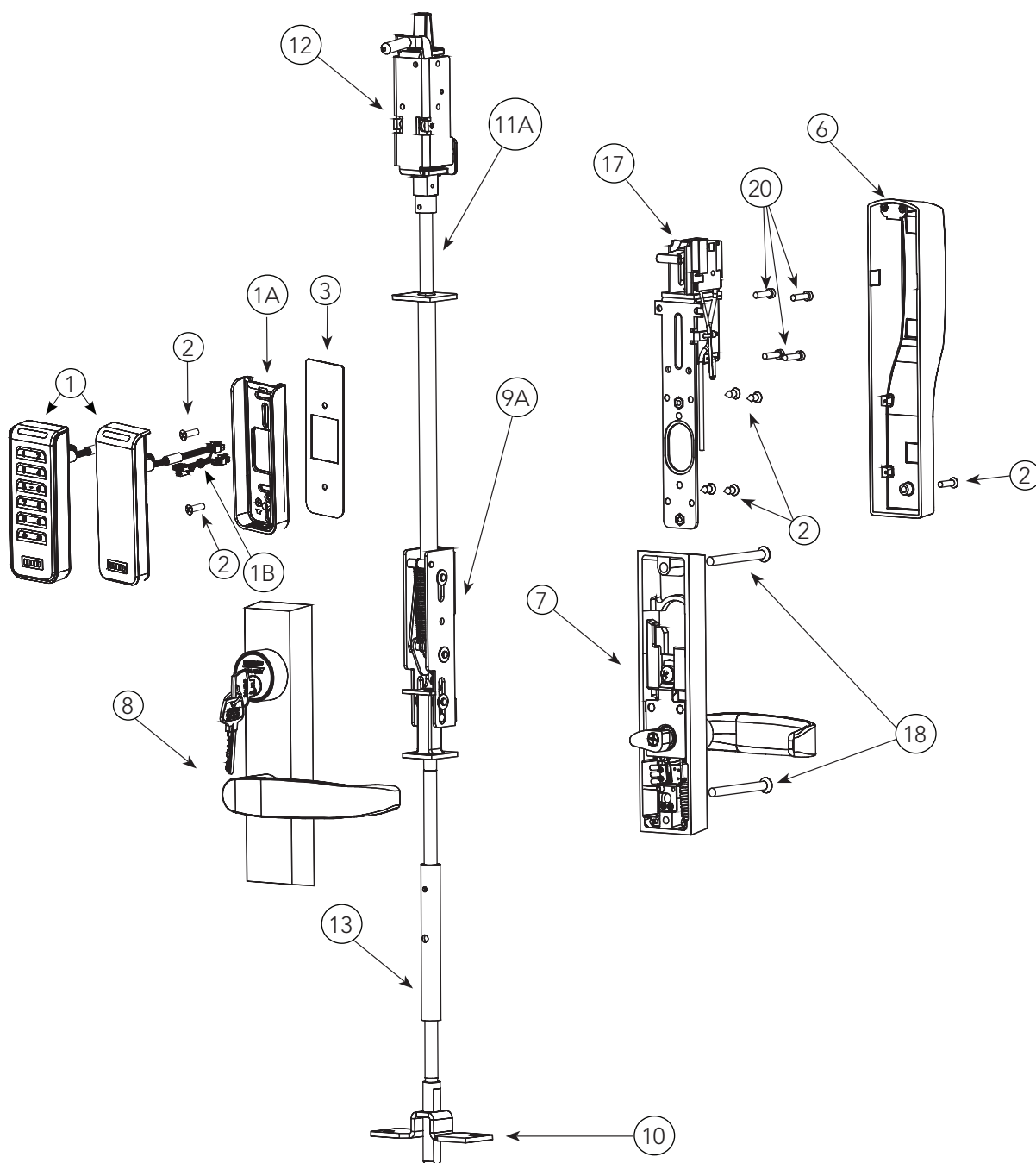
*See SN200 and SN210 Reader & Harness Assembly options

**For other outside trim and their part numbers, consult factory.

SARGENT®
ASSA ABLOY

[illegible]

7000 (ELR) Series



Copyright © 2023, SARGENT Manufacturing Company. All rights reserved. Reproduction in whole or in part without the express written permission of SARGENT Manufacturing Company is prohibited. Patent pending and/or patent www.assaabloydss.com/patents.

7000 Series Multi-point Lock

SN200/210

SARGENT

ASSA ABLOY

7000 Series Parts Table

ITEM	PART #	DESCRIPTION	REQ.
1*	–	Reader & Harness Assembly	1
1A	–	Signo Reader Back Plate	1
1B*	–	Signo Wiring Harness ONLY	1
2*	–	Screw Pack, SE Series	1
3*	–	SN200/210 Standard Fire Kit	1
4	52-5219	I/S Mounting Plate	1
5	97-0801	I/S SN200/210 Escutcheon	1
6	97-4056	I/S ELR Escutcheon Assembly	1
7	–	WD/MD/AD Inside Trim Assembly	1
8**	–	Outside Trim Assembly	1
9A	94-2411	MD/AD Inner Chassis Assembly	1
	94-2412	MD/AD Inner Chassis Assembly, Fire (12-)	1
	94-2414	MD/AD Monitoring Inner Chassis, Fire (53-/12-53-)	1
9B	94-2423	WD Inner Chassis Assembly (not shown)	1
	94-2424	WD Monitoring Inner Case (53-) (not shown)	1
10	68-0888	Bottom Case	1
11A	MD694T	MD/AD Top Rod and Bolt Assembly	1
11B	WD694T	WD Top Rod and Bolt Assembly (not shown)	1
12	68-5374	Top Case Assembly	1
13	694B	Bottom Rod and Bolt Assembly	1
14	97-0825	Standard Plate (Rectangular) (not shown)	2
	97-0826	Sculpted Plate (Optional) (not shown)	1
15	68-1264	WD Top Case Bracket (not shown)	1
16	650	Top Strike Pack (not shown)	1
	606	Bottom Strike Pack, Fire (12-)(HC)(WS)(not shown)	1
	652	Top and Bottom Strike Pack, STD (not shown)	1
17	52-4722	ELR Assembly	1
18	94-2415	MD/AD Screw Pack	1
		#10-24 x 1/2 PH FL Undercut HD MS	2
		CR-0HMS 10-24 x 3/8	4
		1/4-20 x 1/2 PH FLT HD MS	2
		Machine Screw 1/4-20 UNC 3.00	2
		Bottom Plate (WD-12-8600)	1
19	94-2431	WD Screw Pack (shown as Item 18)	1
20	52-4723	MD/AD Mounting Hardware	1
		#8-32 x .625 Fillister Machine Screw	4
21	52-4724	WD Mounting Hardware (shown as Item 20)	1
		#8 x .625 Self Tapping Screw	4
22	01-9241	#3 - 48 x 1/8" Pan head Machine Screw (not shown)	1

*See SN200 and SN210 Reader & Harness Assembly options

**For other outside trim and their part numbers, consult factory.

Copyright © 2023, SARGENT Manufacturing Company. All rights reserved. Reproduction in whole or in part without the express written permission of SARGENT Manufacturing Company is prohibited. Patent pending and/or patent www.assaabloydss.com/patents.

AB363A 03/23

22

1-800-727-5477 • www.sargentlock.com

Experience a safer
and more open world

The ASSA ABLOY Group is the global leader in access solutions. Every day, we help billions of people experience a more open world.

ASSA ABLOY Opening Solutions leads the development within door openings and products for access solutions in homes, businesses and institutions. Our offering includes doors, frames, door and window hardware, mechanical and smart locks, access control and service.



SARGENT Manufacturing Company
100 Sargent Drive
New Haven, CT 06511 USA
800-727-5477
www.sargentlock.com

Founded in the early 1800s, SARGENT® is a market leader in locksets, cylinders, door closers, exit devices, electro-mechanical products and access control systems for new construction, renovation, and replacement applications. The company's customer base includes commercial construction, institutional, and industrial markets.

Copyright © 2023, SARGENT Manufacturing Company. All rights reserved. Reproduction in whole or in part without the express written permission of SARGENT Manufacturing Company is prohibited. Patent pending and/or patent www.assaabloydss.com/patents.

A8363A 03/23