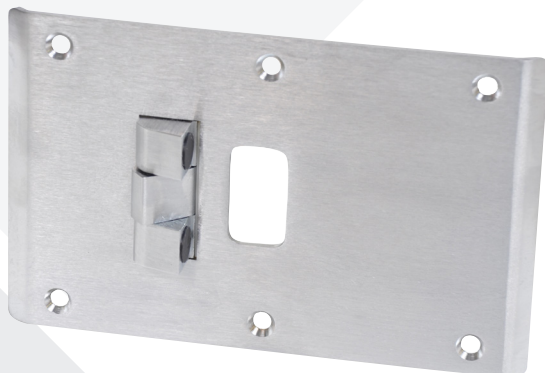


McKinney CSS-9

Combination Strike and Stop



SPECIFICATIONS:

MATERIAL:

Brass

DESCRIPTION:

Combination Strike and Stop

FASTENERS:

1/2" x #8-32 Machine Screws

NOTES:

- Manufactured for use with cylindrical or bored locks
- Cannot be used with deadbolts
- Can be manufactured for the following mortise locks:
 - Sargent 7900 and 8200 (no deadbolt function)
 - Corbin Russwin ML2000 (no deadbolt function)
 - Yale 8800 (no deadbolt function)
 - When ordering, specify lock model and function
- Available in offset or center hung latch bolt location
- Custom units available for frame sizes 3 1/2" to 10". Consult factory for availability.
- For use on 1 3/4" thick doors

SIZE:

6 3/4"

AVAILABLE FINISHES:

- US26D/626

PACKAGED/WEIGHT:

As ordered

ANSI:

A1882 Grade 2

*Fill out order form online