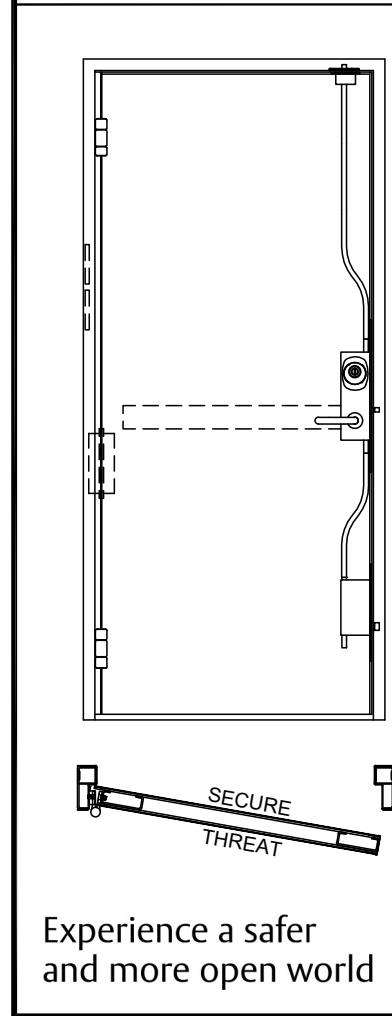
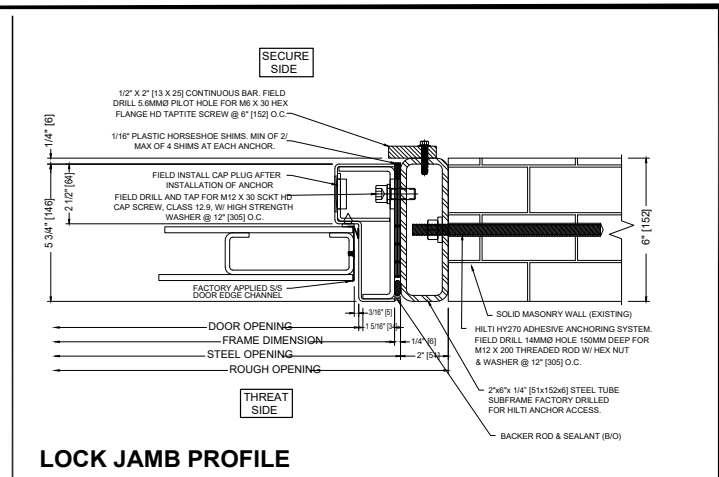
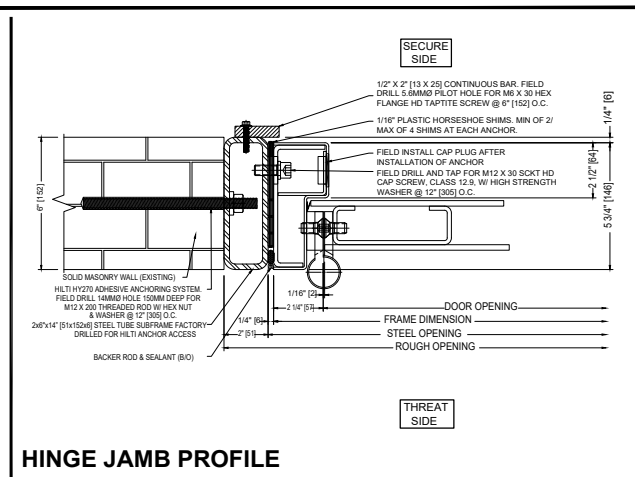
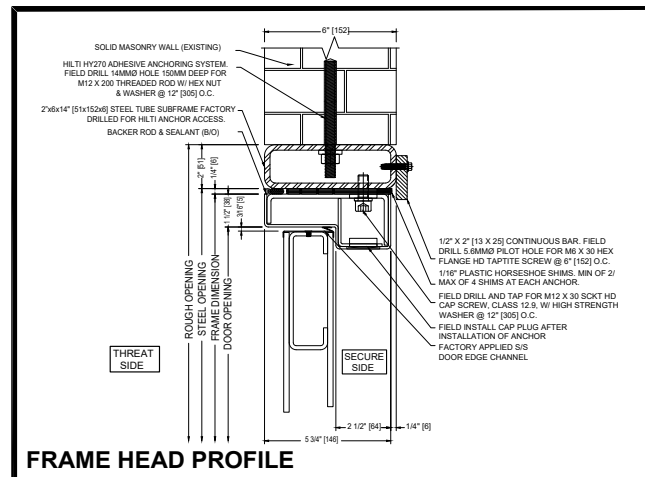
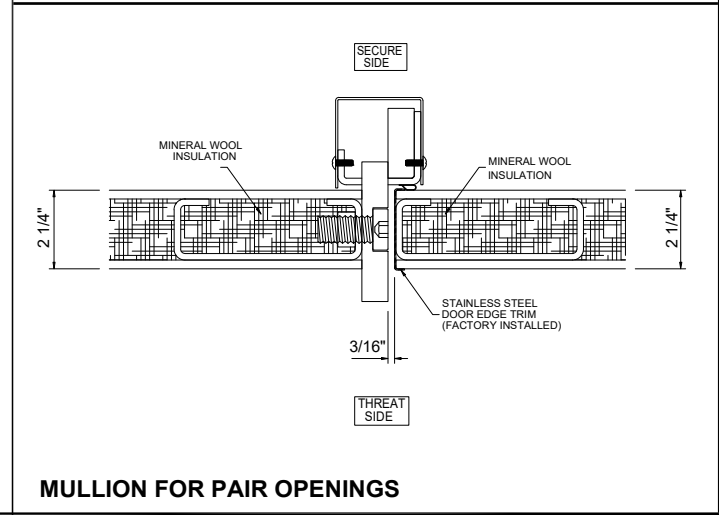
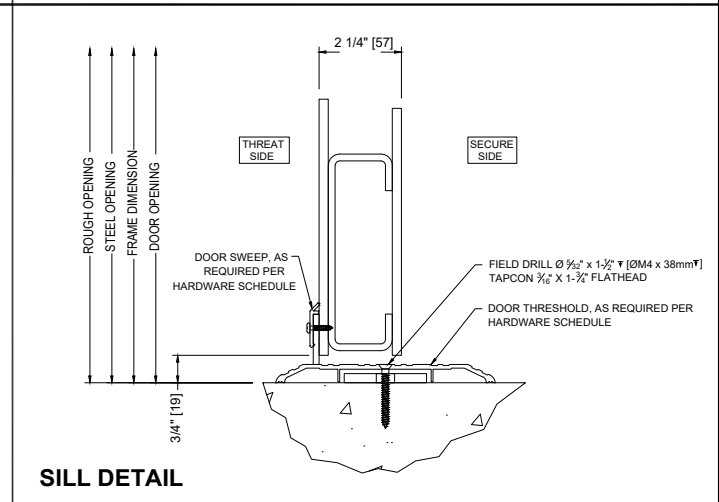


# Forced Entry Bullet Resistant (FEBR) Assembly



## Specifications:

- All exposed surfaces of door and frame to receive one coat of epoxy primer. Field applied finish paint must be oil based.
- Assembly is shipped with hollow metal door and frame pre-hung with lock and hinges pre-installed
- Surelock McGill Slimline Multipoint Lock
  - Concealed or surface mounted
  - Functions include manual, electric latch retraction, delayed egress
  - Optional lever or panic bar available
- MSP855 High Security Hinge
- Nominal Door Thickness is 2-1/4"
- Door Weight is approximately 30 pounds per square foot
- Custom frame anchor types are required based on wall conditions
- Can be installed in steel stud, masonry or precast walls
- Vision options are available with factory installed glass for 5 and 15 minute FEBR ratings only
- Flush door design only for 60 minute FEBR rating with optional viewer
- No fire rating at this time
- Factory supplied shop drawing approval is required
- Meets UL752 Level 8 Bullet Resistance, Forced Entry SD-STD-01.01Rev.g, and ASTM F3038-14



Experience a safer  
and more open world