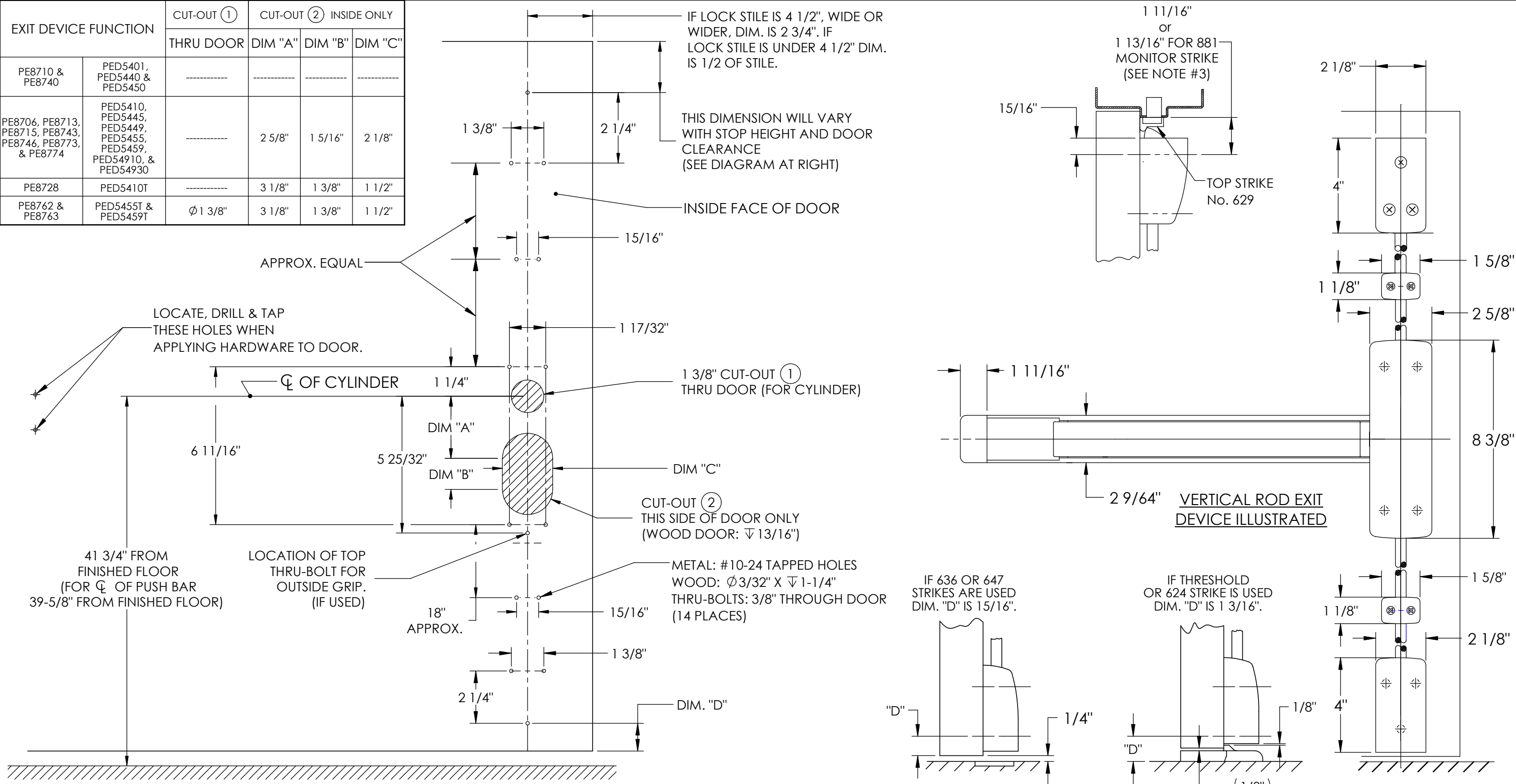


EXIT DEVICE FUNCTION		CUT-OUT ①	CUT-OUT ② INSIDE ONLY		
		THRU DOOR	DIM "A"	DIM "B"	DIM "C"
PE8710 & PE8740	PED5401, PED5440 & PED5450	-----	-----	-----	-----
PE8706, PE8713, PE8715, PE8743, PE8746, PE8773, & PE8774	PED5410, PED5445, PED5449, PED5455, PED5459, PED54910, & PED54930	-----	2 5/8"	1 5/16"	2 1/8"
PE8728	PED5410T	-----	3 1/8"	1 3/8"	1 1/2"
PE8762 & PE8763	PED5455T & PED5459T	Ø 1 3/8"	3 1/8"	1 3/8"	1 1/2"



- NOTES:
1. TOLERANCE ON ALL DIMENSIONS ±1/64.
 2. WE RECOMMEND THAT ALL TAPPED HOLES BE DRILLED AND TAPPED IN FIELD.
 3. SEE STRIKE TEMPLATE No. MEDT26 FOR 629 (TOP) AND 624. 636 & 647 (BOTTOM) STRIKES. FOR 881 MONITOR STRIKE SEE TEMPLATE MEDT24.
 4. SEE MASTER SHEET No. MEDT23 FOR AREAS REQUIRING REINFORCEMENTS.
 5. SURFACE OF DOOR WHERE EXIT DEVICE IS TO BE APPLIED MUST BE FLUSH.
 6. FOR GLASS BEADED DOORS, IF GLASS BEAD CAN NOT BE REMOVED, USE SHIM KIT (AVAILABLE ON ORDER).
 7. FOR NB-/M55 (LESS BOTTOM ROD) OPTIONS, REFERENCE TEMPLATE MEDT13

ASSA ABLOY
Opening Solutions
Solutions for every door
Accessories - glass inserts
Door, fire door, exit door, etc.

DOOR MANUFACTURERS TEMPLATE:
FOR VERTICAL ROD EXIT DEVICE
PE8700 / PED5400

RELEASE DATE
MAY 31, 2024

TEMPLATE NO.
MEDT12_4