

Heritage Collection

ANSI/BHMA Grade 2 Certified Lever



The ASSA ABLOY Group is the global leader in access solutions. Every day, we help billions of people experience a more open world.

ASSA ABLOY Opening Solutions leads the development within door openings and products for access solutions in homes, businesses and institutions. Our offering includes doors, frames, door and window hardware, mechanical and smart locks, access control and service.

ACCENTRA®
ASSA ABLOY

Heritage Collection

ANSI/BHMA Grade 2 Certified Lever

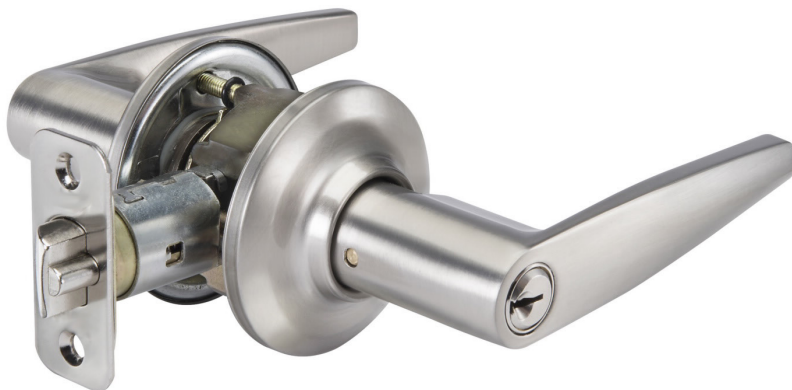
Heritage Collection Grade 2 levers offer a range of designs featuring sculptured roses and delicately crafted curves. The “non-handed” design and strength of the interior sub-assemblies allow for quick and easy installation and years of secure operation. All products in this series are ANSI Grade 2 certified superior light commercial quality.

Typical Applications

- Residential
- Light Commercial

Features

- A156.2 Series 4000 Certified Grade 2
- Locksets carry a two-year warranty
- Superior light commercial quality
- Keyway: KW-1; SC-1, PARA optional
- Non-handed levers eliminate handing issues



Benefits

- Easy install mounting system and square spindles simplify knob and lever installation
- Removable levers/knobs and rosettes allow for easy scratch-free installation
- Heavy-duty shroud adds a security level of anti-pry robustness

ASSA ABLOY ACCENTRA® • 225 Episcopal Road, Berlin, CT 06037-4004 • Tel: 1-800-438-1951 • Fax: 1-800-338-0965 • www.accentra-assaabloy.com

Copyright © 2016-2025, ASSA ABLOY Access and Egress Hardware Group, Inc. All rights reserved. Reproduction in whole or in part without the express written permission of ASSA ABLOY Access and Egress Hardware Group, Inc. is prohibited. Patent pending and/or patent www.assaabloydss.com/patents.