

4400 Series with Corner Bracket

Brackets 498 and 2498

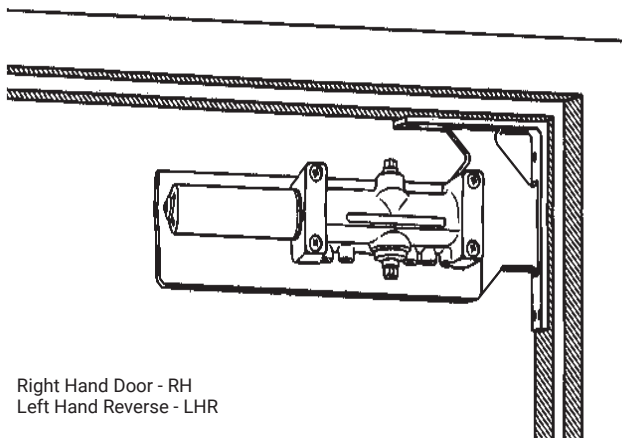
Standard Drop and Extra Drop

Installation Instructions

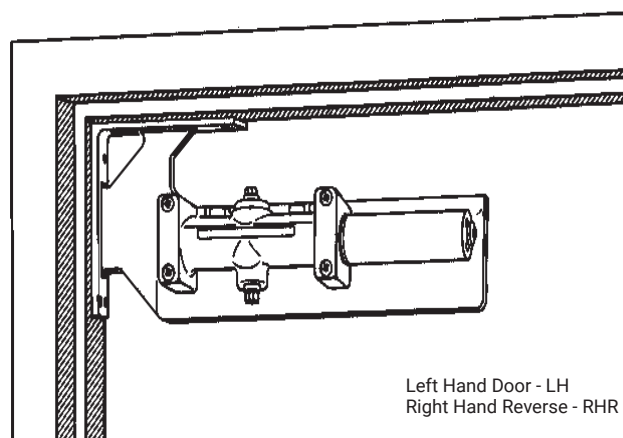
ACCENTRA

ASSA ABLOY

498 Standard Drop Bracket



2498 Extra Drop Bracket



Controls with or without suffix "M" with Full Metal Cover.

NOTE: For special applications a separate door and frame preparation template is packed with these instructions. In those cases, use this instruction sheet for installation sequence and closer adjustments only.

Function	Series Number
Non-Hold Open	4400
Hold Open*	4410

*Hold Open arm door closers are not permitted to be installed on fire doors.

Closer Power Sizes
Multi-sized Closer power sizes 1 to 6.

WARNING

This product can expose you to lead which is known to the state of California to cause cancer and birth defects or other reproductive harm. For more information go to www.P65warnings.ca.gov.

WARNING

Attention Installer: Any retrofit or other field modification to a fire rated opening can potentially impact the fire rating of the opening, and ASSA ABLOY makes no representations or warranties concerning what such impact may be in any specific situation. When retrofitting any portion of an existing fire-rated opening, or specifying and installing a new fire-rated opening, please consult with a code specialist or local code official (Authority Having Jurisdiction) to ensure compliance with all applicable codes and ratings.

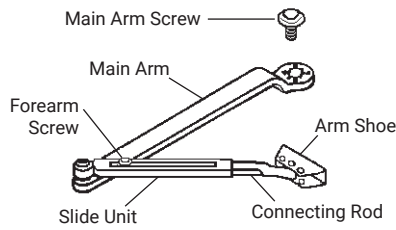
855-557-5078 x 2 • www.accentra-assaabloy.com

Copyright © 1992, 2012, 2024, ASSA ABLOY ACCENTRA™ Access and Egress Hardware Group, Inc. All rights reserved. Reproduction in whole or in part without the express written permission of ASSA ABLOY Access and Egress Hardware Group, Inc. is prohibited.

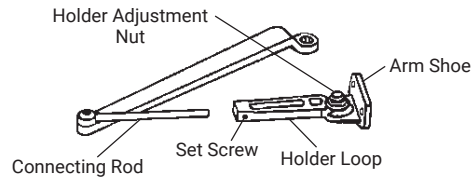
80-9344-1149-010 Rev 3 05/24

Experience a safer
and more open world

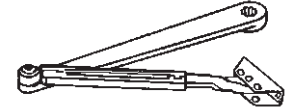
Components



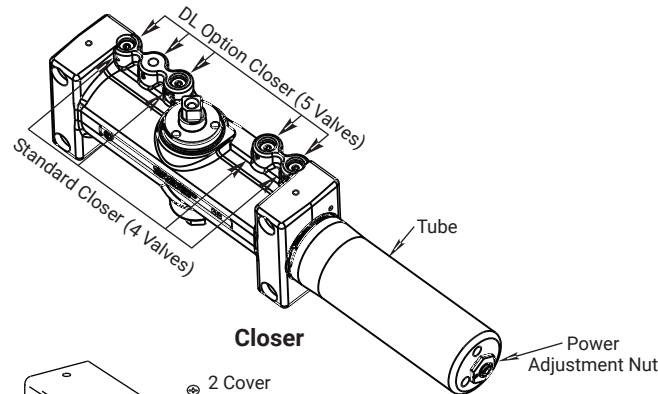
**Regular Arm Assembly
4400**



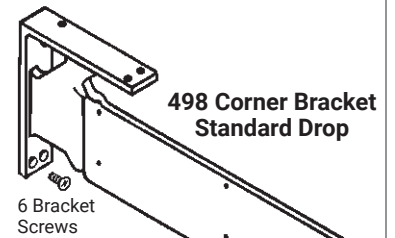
**Hold Open Arm Assembly
4410**



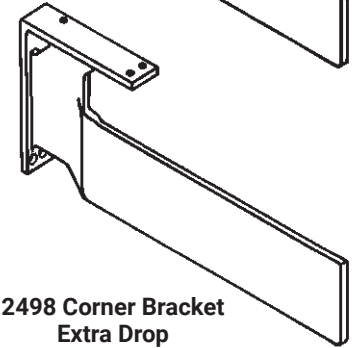
**Low Profile Arm Assembly
4480**



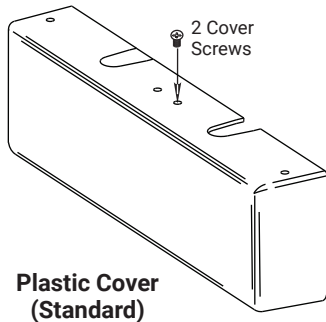
Closer



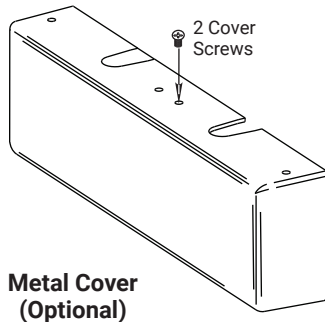
**498 Corner Bracket
Standard Drop**



**2498 Corner Bracket
Extra Drop**



**Plastic Cover
(Standard)**



**Metal Cover
(Optional)**

ATTENTION:

- It is recommended that the door, on which the door closer will be installed, be hung on ball bearing hinges. Door must swing freely.
- A separate door stop, supplied by others, is recommended to prevent damage to the door closer, closer arm, or to the door, frame or adjacent walls.
- Door and Frame must be properly reinforced, or use of special fasteners employed, to prevent the mounting screws from pulling out.
- All dimensions are given in inches with corresponding metric dimensions (millimeters) in parentheses.

Preparation for Fasteners

	Fasteners	Door or Frame	Drill-Sizes
Standard	Self-Drilling Screw	Aluminum or Metal	No Drill Required
		Wood (see Note)	3/16" (4.30mm)
	1/4"-20 Machine Screw	Metal	Drill: #7 (0.201" dia) Tap: 1/4"-20
Optional	Sleeve nuts and bolts	Hollow Metal	9/32" (7mm) through; 3/8" (9.5mm) door face opposite of closer
		Aluminum or Wood	3/8" (9.5mm) through
	Through-bolts and grommet-nuts (optional)	All	9/32" (7mm); 3/8" (9.5mm) dia. x 3/8" (9.5mm) deep on door face opposite of closer

NOTES:

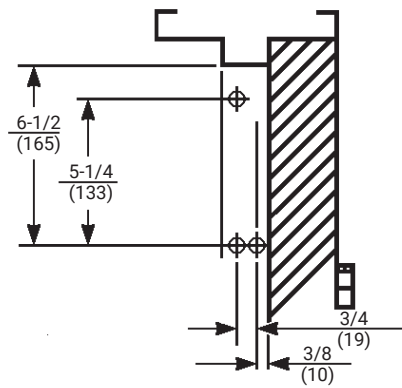
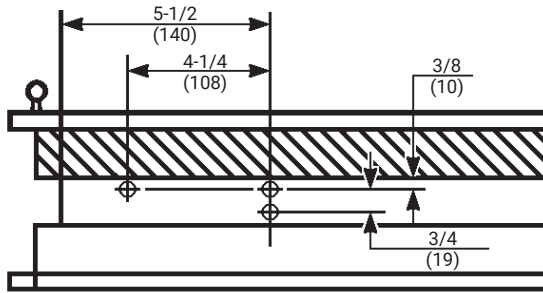
- Pilot hole must be drilled when using self-drilling screws on wood doors and frames.
- Always consult door/frame manufacturer for fastener compatibility with the material of their door/frame.

4400 Series with Corner Brackets

Standard Drop and Extra Drop

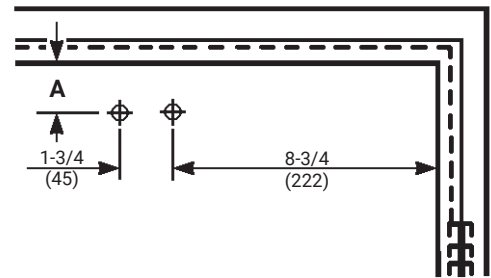
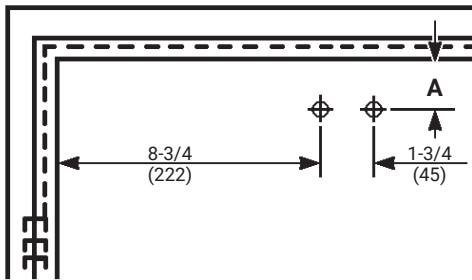
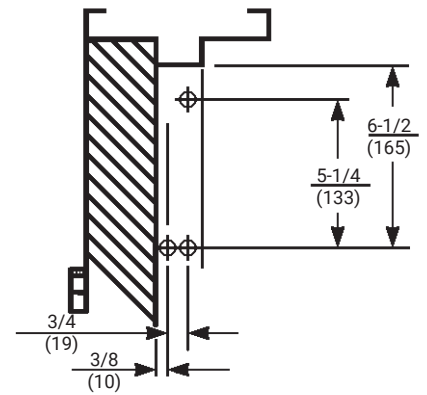
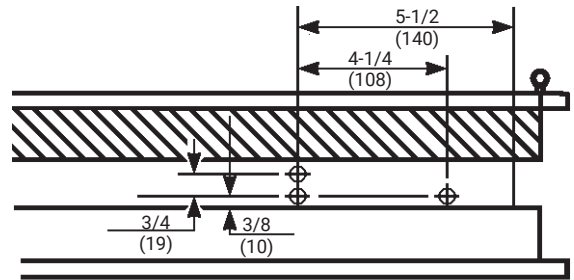
ACCENTRA
ASSA ABLOY

Left Hand Door Installation



- Do not scale drawings.
- Hand of Door as noted.
- Dimensions are given in inches (mm)
- Door will swing 180°, conditions permitting.
- Hinges in excess of 5" in width, swing clear hinges, etc, may limit door swing.

Right Hand Door Installation



Power Adjustment Chart

Maximum Interior Door Size inches (mm)	Maximum Exterior Door Size inches (mm)	Turns from Zero
32 (813)	28 (711)	5
36 (914)	34 (864)	8-1/2
42 (1067)	38 (965)	11
52 (1321)	42 (1067)	13-1/2
60 (1524)	48 (1219)	16-1/2
NOTE: Maximum of 16-1/2 turns (360°) of Power Adjustment Nut.		

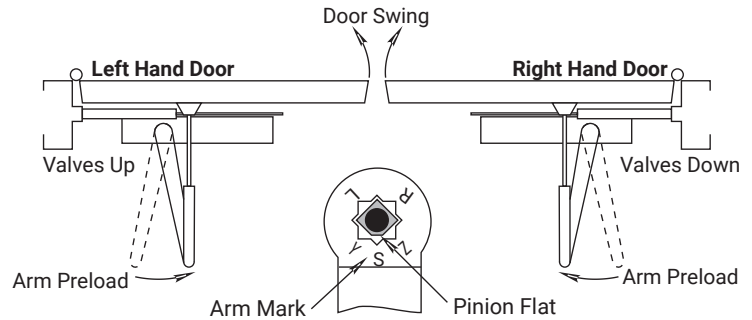
Corner Bracket	Closer Series	Type	Dimension A
498	4400	Non-Hold Open	3/4 (19)
2498	4400	Non-Hold Open	1-7/8 (48)
	4480	Non-Hold Open	2-3/8 (60)
	4410	Hold Open	1-3/4 (44)

Installation Sequence with Models 4400 and 4480, Non-Hold Open Closers

1. Select angle of opening and use dimensions shown to locate 6 holes on frame stop for corner bracket and 2 holes on door for arm shoe.

NOTE: For applications that are different from above, a separate template will be required.

2. Prepare door and frame for fasteners using "Preparation for Fasteners" chart on page 2.
3. Mount corner bracket.
4. Set closing power using "Power Adjustment Chart" on page 3.
5. Install closer body with tube end away from hinge, with valves:
UP for Left Hand door.
DOWN for Right Hand door.
6. Remove connecting rod and shoe from arm assembly and fasten connecting rod and shoe to door.
7. Mount main arm onto closer pinion shaft, aligning arm mark "S" with pinion flat. Secure with main arm screw.
8. Open door and insert connecting rod into arm slide. Close door. Rotate main arm away from hinge until forearm is perpendicular to door. Tighten set screw securely.
9. Adjust closer (see page 5) and install cover.

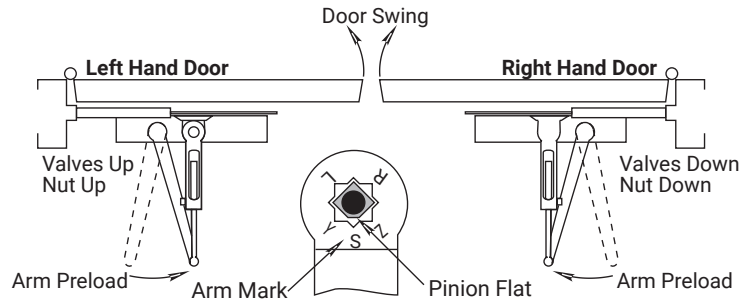


Installation Sequence with Model 4410, Hold Open Closer

1. Use dimensions shown to locate 6 holes on frame stop for corner bracket and 2 holes on door for arm shoe.

NOTE: For applications that are different from above, a separate template will be required.

2. Prepare door and frame for fasteners using "Preparation for Fasteners" chart on page 2.
3. Mount corner bracket.
4. Set closing power using "Power Adjustment Chart" on page 3.
5. Install closer body with tube end away from hinge, with valves:
UP for Left Hand door.
DOWN for Right Hand door.
6. Install holder-loop unit on door with holder adjustment nut UP for Left Hand door - DOWN for Right Hand door.
7. Mount main arm onto closer pinion shaft, aligning arm mark "S" with pinion flat. Secure with main arm screw.
8. Open door and insert connecting rod into holder-loop. Preload arm. Tighten set screw securely.
9. Adjust closer (see Page 6) and install cover.



4400 Series with Corner Brackets

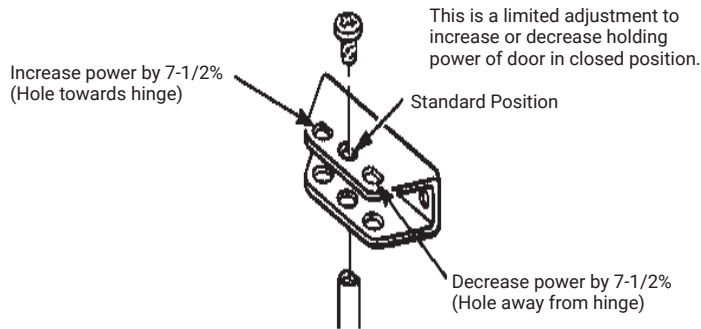
Standard Drop and Extra Drop

ACCENTRA
ASSA ABLOY

Adjustments

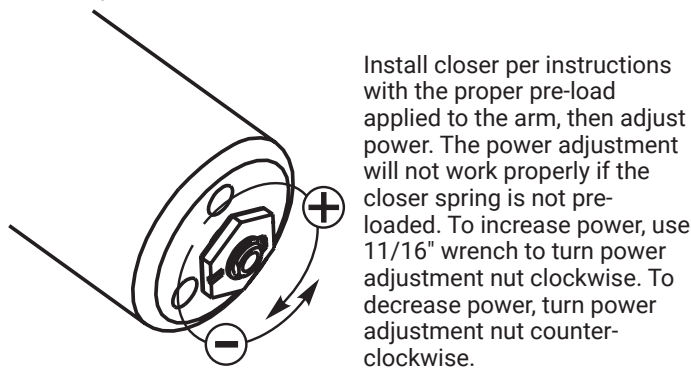
Closing Power Control

Arm Shoe for Non-Hold Open Closers
(Regular Arm and Top Jamb Only)



Closer Power Adjustment

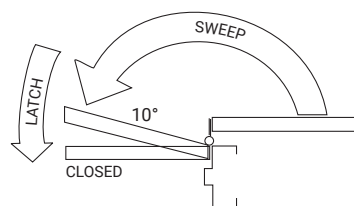
Set closer to desired door size. For recommended sizes, refer to "Power Adjustment Chart" on page 3.



DO NOT use a power drill or driver to turn adjustment nut. This will damage closer and void warranty.

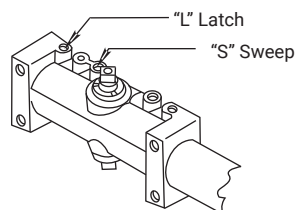
Closing Speed Controls

Standard Closing Cycle



ATTENTION: Adjust closing speed time to between 4 and 7 seconds from 90°. Use of the door by handicapped, elderly, or small children may require a greater closing time.

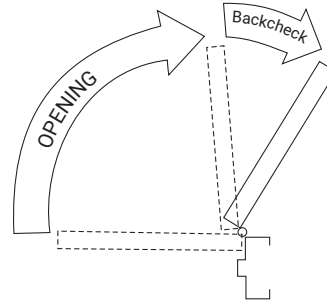
Speed Control Valves



DO NOT force valves counter-clockwise out of closer body or a fluid leak will occur.

Control

Opening Cycle



CAUTION:
Do not back valves out of closer or a leak will result.

NEVER CLOSE VALVE COMPLETELY:
Not intended to provide a positive stop.

Backcheck

Backcheck Position ("P" Valve)

Open for backcheck later in door-opening cycle



Backcheck Cushion ("B" Valve)

Increase



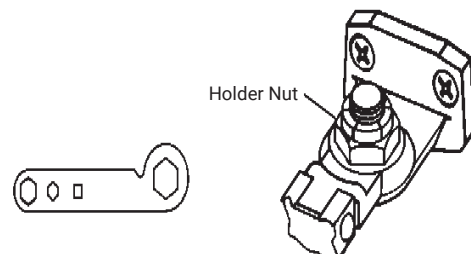
Decrease

Do not force valves counter-clockwise out of closer body or a fluid leak will occur.

Hold Open Power Adjustment

Position of Holder Nut (UP or DOWN) will depend upon type of installation and hand of door. To set hold open, loosen holder nut to allow full door swing. Open door to desired degree of hold open. Use wrench provided or a 1" wrench and tighten holder nut.

Arm Shoe for Hold Open Door Closers Only



Hold Open arm closers are not permitted to be installed on fire doors.

Opening Door

