

Installation Instructions

10X Line with VSL Indicator Trim

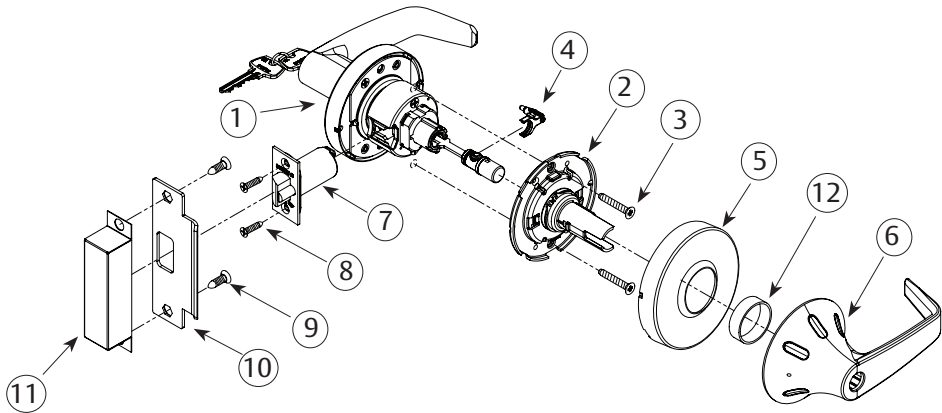
SARGENT®

ASSA ABLOY

1. Part Identification

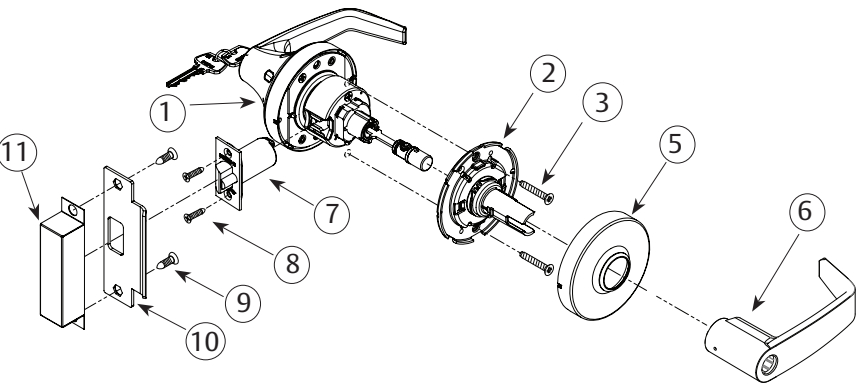
VSL indicator trim is available for the inside only, outside only or both sides of the door. The parts included may vary slightly from the illustrations shown depending on function/model being installed.

Indicator Inside Only (Option Codes V03 or V06)

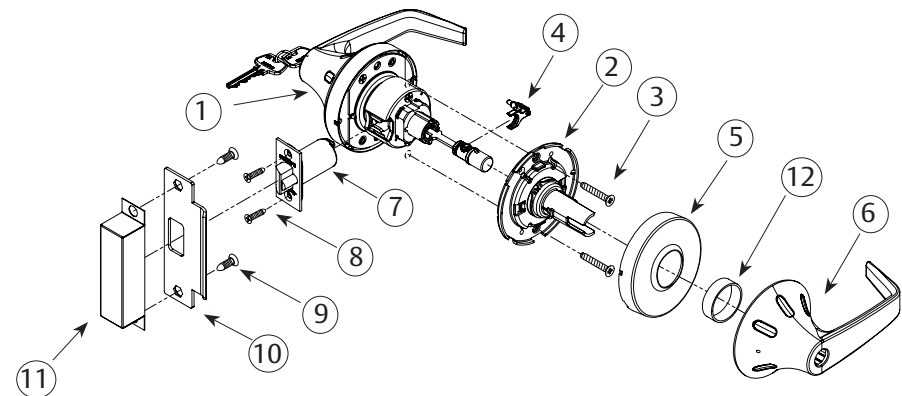


Item	Description
1	Outside assembly
2	Inside spring housing assembly
3	Screws- through-bolt (2) #10-32 x 1-1/4"
4	Button arm
5	Inside rose/scalp
6	Inside lever
7	Latch
8	Screws- latch (2) #8-32 x 3/4"
9	Screws-strike (2) #12-24 x 3/4"
10	Strike
11	Strike box (optional)
12	Spacer (for shipping only)

Indicator Outside Only (Option Codes V30 or V60)



Indicator Both Sides (Option Codes V33 or V66)



⚠ WARNING

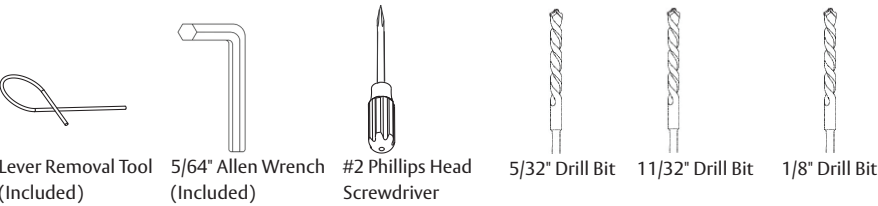
This product can expose you to lead which is known to the state of California to cause cancer and birth defects or other reproductive harm. For more information go to www.P65warnings.ca.gov.

10X Line

with VSL Indicator Trim

Installation Instructions

2. Tools Required



3. Door Preparation

- 1. Use template A8290 to mark the door. See Figure 1.
- 2. Drill the door according to the template.
- 3. Verify the dimensions. See Figure 2.
- 4. Install the strike. See Figure 3.

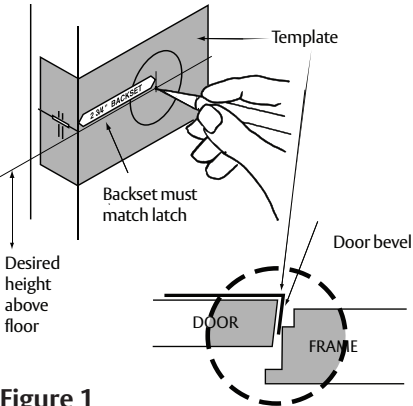


Figure 1

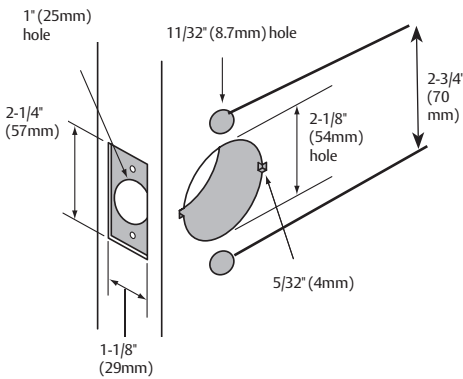


Figure 2

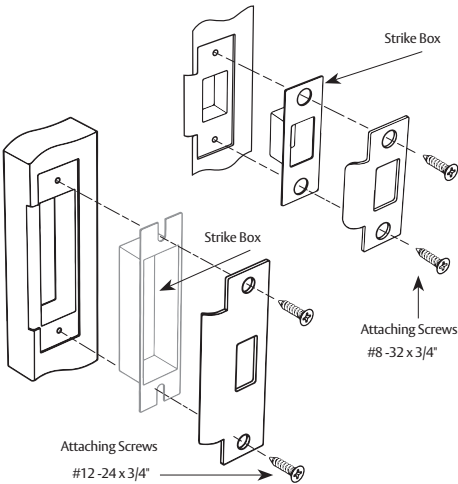


Figure 3

IMPORTANT

- The accuracy of door preparation is critical for proper functioning and security of this lever handle lock. Misalignment can cause premature wear and a lessening of security.
- Verify backset before marking and drilling door.

4. Door Thickness

Indicator trim outside assembly is preset at the factory to door thickness range.



IMPORTANT

- Do not remove outside lever and rose assembly from lockbody.
- Door must remain open during installation. Use door stop.
- Taking apart the outside assembly may result in voiding the factory warranty. Contact Technical Support with any questions.

Door Thickness	Accommodates Range
1-3/4" Standard (44mm)	1-11/16" to 1-15/16" (43mm - 49mm)
2" (50mm)	1-15/16" to 2-1/8" (49mm - 54mm)
2-1/4" (57mm)	2-1/8" to 2-5/16" (54mm - 59mm)

10X Line

with VSL Indicator Trim

Installation Instructions

SARGENT

ASSA ABLOY

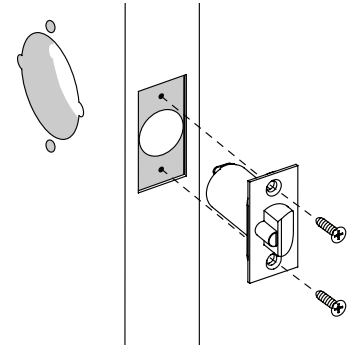
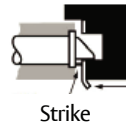
5. Installation Guide

A. Install Latch

1. Insert latch in door. (Bevel edge of bolt must face the strike plate.)
2. Attach with (2) #8-32 x 3/4" screws supplied.

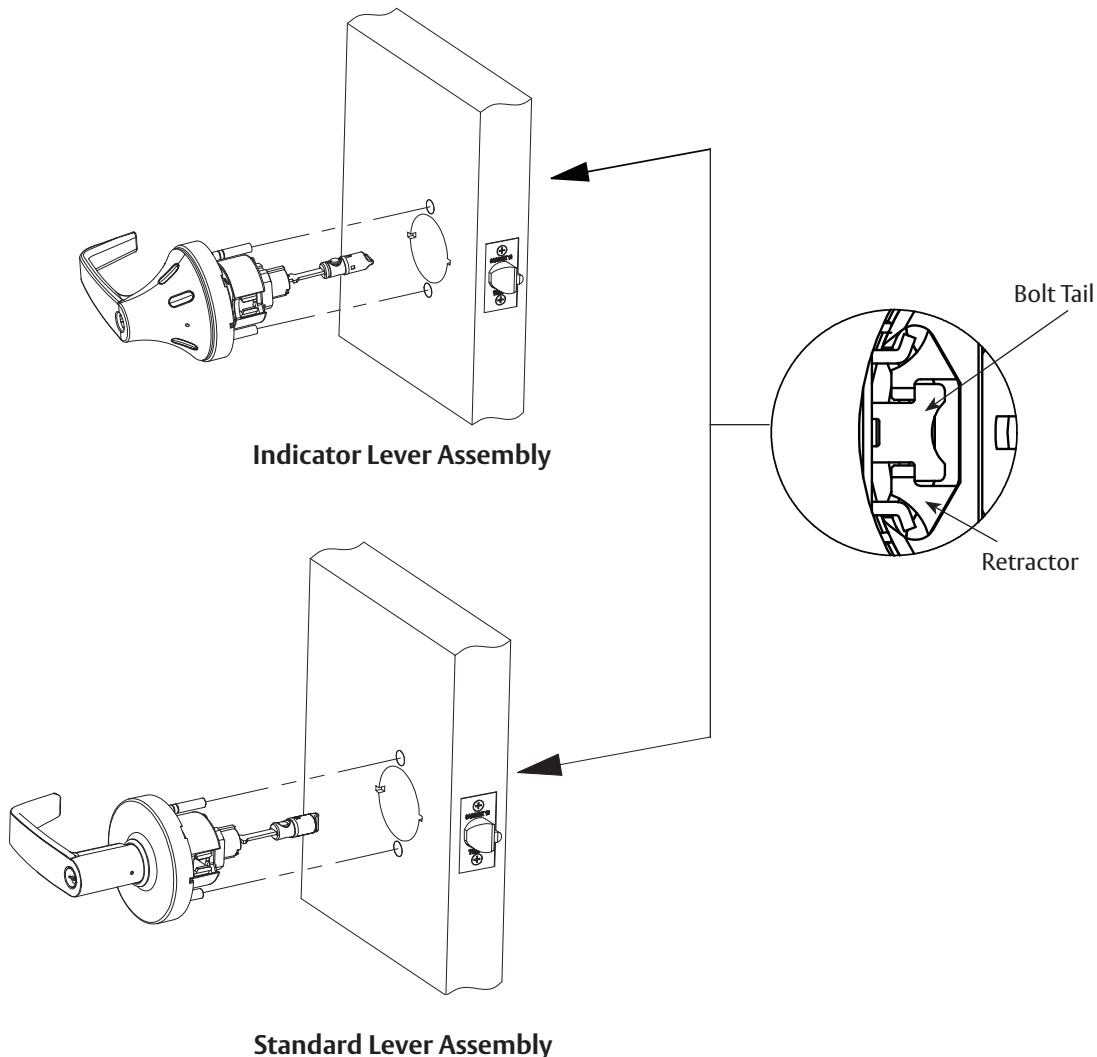
IMPORTANT

Deadlocking latch must stop on strike when door is closed.



B. Install Outside Assembly

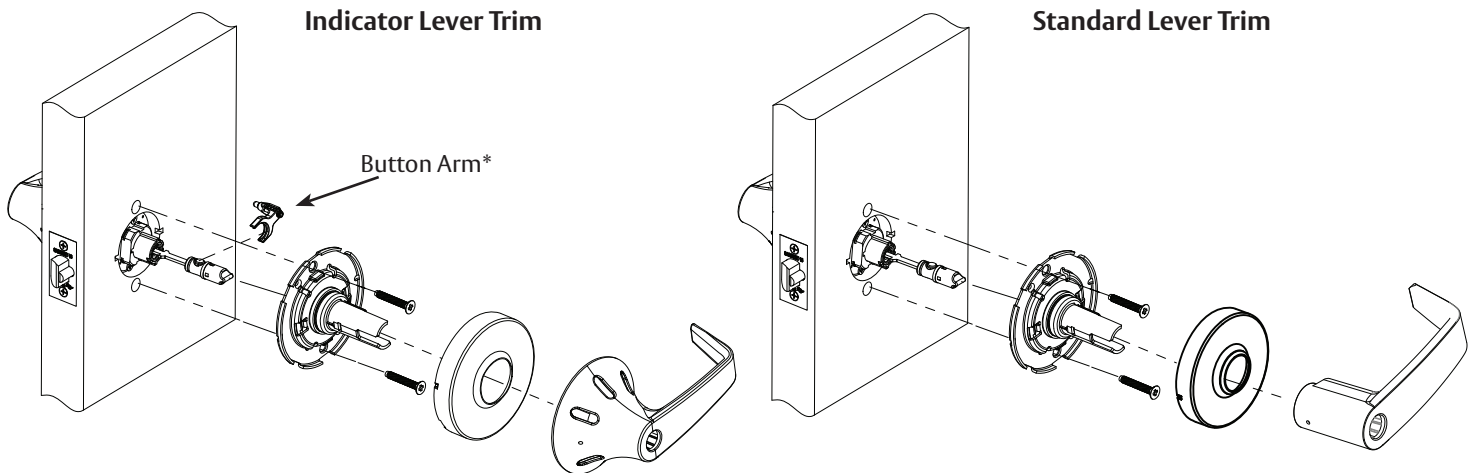
Insert outside assembly into door from the outside. The lockbody must hook the latch case so that the retractor engages the bolt tail. **DO NOT FORCE.** (If lockbody doesn't engage latch easily, check door preparation for errors.)



5. Installation Guide, continued

C. Install Inside Components

- **All Functions, except 10XG38 Classroom Security Intruder. (See page 5 for 10XG38.)**
 1. Remove rose from inside spring housing assembly.
 2. Align and insert inside spring housing onto the installed lockbody.
 3. Install (2) #10-32 x 1-1/4" through-bolt screws to tighten the lock to the door.
 4. Orient dimples on the side of the rose horizontally at 3 and 9 o'clock position in line with the openings on the spring housing assembly.
 5. Install rose onto the inside spring housing assembly.
 6. **If indicator lever trim, go to Section D on Page 6.** If standard lever trim, continue with steps 7 and 8 to complete installation.



7. For button functions, verify button is in-line with shank when the lock is in the unlocked position as shown in Figure 4. Adjust the button, if necessary, by pressing the plunger and moving it in or out.

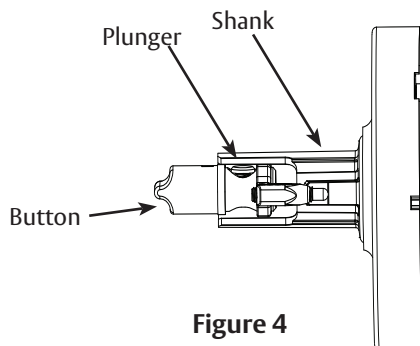


Figure 4

8. Install inside lever.

*The button arm MUST be installed after the rose and is only included when indicator trim is on inside. Refer to Page 6 for detailed instructions for installing the button arm.

5. Installation Guide, continued

C. Install Inside Components, continued

• 10XG38 Classroom Security Intruder Only

1. Remove rose from inside spring housing assembly.
2. Align and insert inside spring housing onto the installed lockbody.
3. Install (2) #10-32 x 1-1/4" through-bolt screws to tighten the lock to the door.
4. Orient dimples on the side of the rose horizontally at 3 and 9 o'clock position in line with the openings on the spring housing assembly.
5. Install rose onto the inside spring housing assembly.
6. Rotate the black plastic spacer on the spring housing so the opening clears the post on the adjustable shank insert. See Figure 5.
 - Remove and discard the spacer.
7. Install inside lever.
 - Verify driver points are at 6 and 12. See Figure 20 on Page 11.
 - Insert and rotate key 45° in either direction, and then slide the lever on over the lever catch.
 - Confirm the lever will not pull off.

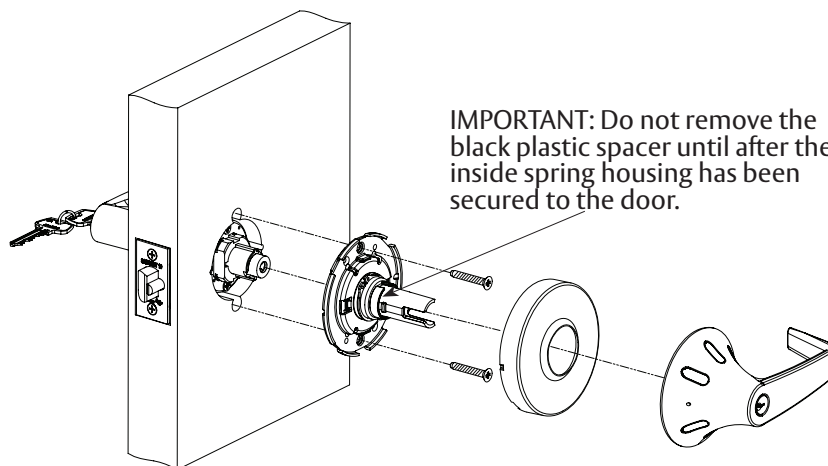
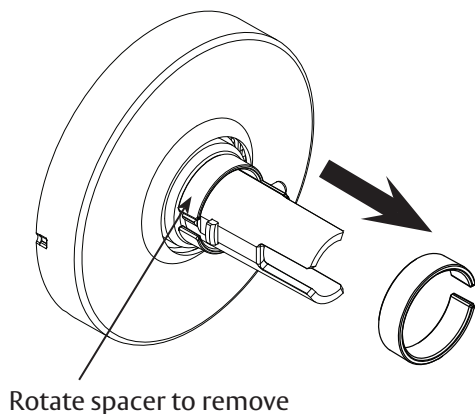
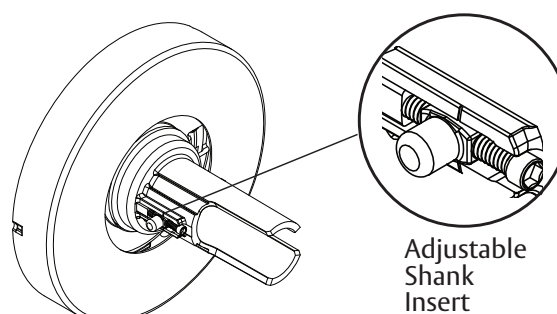


Figure 5



Alternate View of Shank to Show Post and Insert



Adjustable
Shank
Insert

5. Installation Guide, continued

D. Install Button Arm and Indicator Lever (not for 10XG38)

The inside assembly with indicator trim must have the button arm attached to the button before the lever is installed. The button arm will always be installed on the hinge side of the lockbody assembly.

1. Verify the round end of the button arm set screw is pointing towards the door.
2. Snap the button arm into the groove on the button. It will fit securely. See Figure 6.
3. Round end of button arm should align with shank marking in the unlocked state. See Figure 7. Button arm is pre-set at factory. If necessary, use Allen wrench to adjust set screw to align with the shank marking. See Section E for icon alignment, if necessary.

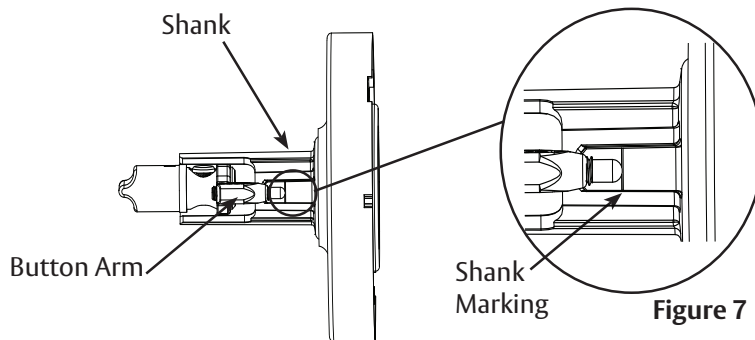
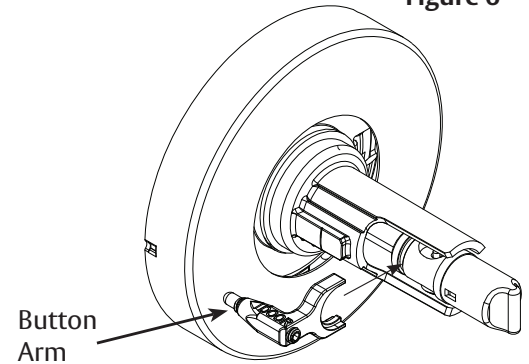
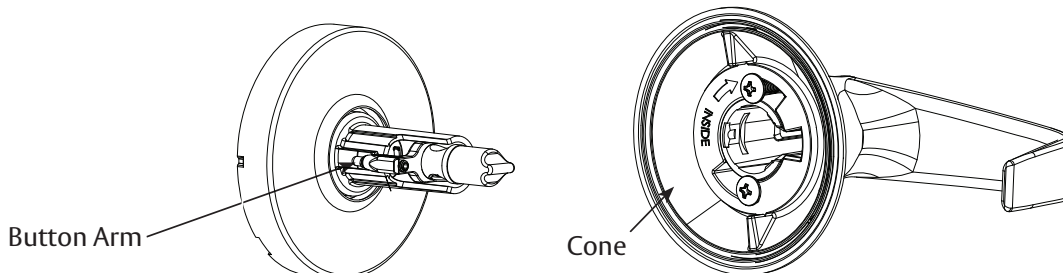


Figure 6



4. Install the inside indicator lever. See Figure 8.
 - a. Rotate the cone inside the lever clockwise so it aligns to fit over the button arm.
 - b. Push lever on and snap into place.

Figure 8



5. Installation Guide, continued

E. Inside Indicator Icon Alignment (if needed)

The instructions below are only for the inside lever assembly if the icons are not entirely visible after installation. No adjustment is required on the outside lever assembly, as it is preset at the factory for door thickness.

• All Functions with Inside Indicator except 10XG38

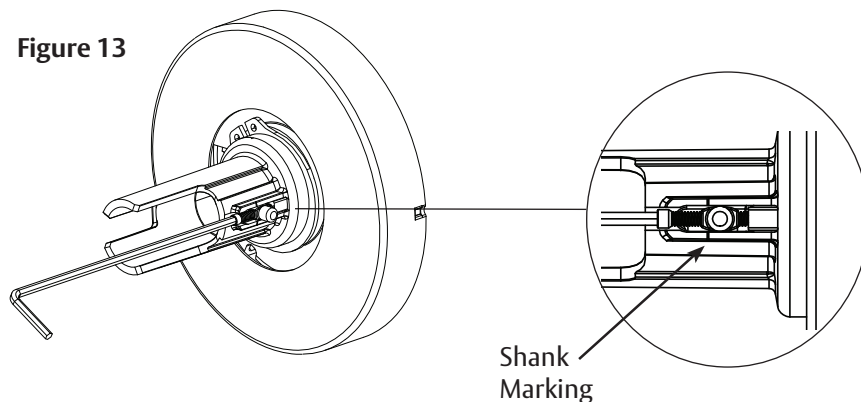
1. Remove inside lever by depressing lever catch with removal tool and pull lever off. See Page 10, D.
2. Verify the button arm is aligned with the shank marking. See Figure 7, on Page 6.
3. If necessary, adjust the set screw with a 5/64" Allen wrench.
 - a. If the icon is shifted to the left (see Figure 9), make a 1/2 turn counterclockwise. See Figure 11.
 - b. If the icon is shifted to the right (see Figure 10), make a 1/2 turn clockwise. See Figure 12.

For each adjustment made on the set screw, reinstall the lever to verify the alignment of the icons. Repeat steps as needed.

• 10XG38 with Inside Indicator

1. Remove inside lever by rotating key 45° and hold, then depress lever catch with removal tool and pull lever off. See Page 10, A.
2. Verify the post on the shank insert is aligned with the shank marking. See Figure 13.

Figure 13



3. Adjust the set screw located on the side of the shank with a 5/64" Allen wrench.
 - a. If the icon is shifted to the left (see Figure 9), make a 1/2 turn counterclockwise.
 - b. If the icon is shifted to the right (see Figure 10), make a 1/2 turn clockwise.

For each adjustment made on the set screw, reinstall the lever to verify the alignment of the icons. Repeat steps as needed.

6. Cylinder Installation (If units provide less cylinder or with construction cores)

IMPORTANT

Before installing cylinders:

- Use a flat blade screwdriver to rotate cam until the driver points are in a 6 and 12 o'clock position.
- Timing may need adjusting on certain functions. See Section G. "Lock Timing" on Page 10.

A. Fixed Core Cylinders

Cylinder spacer should be installed "snapped" on to the cylinder before installing into the outside trim assembly.

• Indicator Levers

- Rotate cone inside the lever clockwise to allow the cylinder to be inserted. See Figure 14.
- Install cylinder. See Figure 15.
- Release cone.

Figure 14

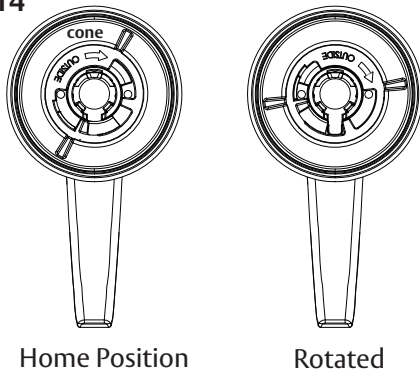
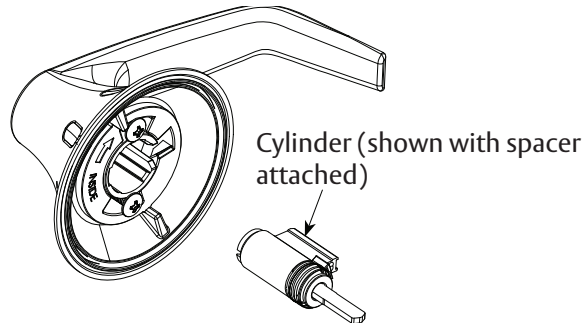
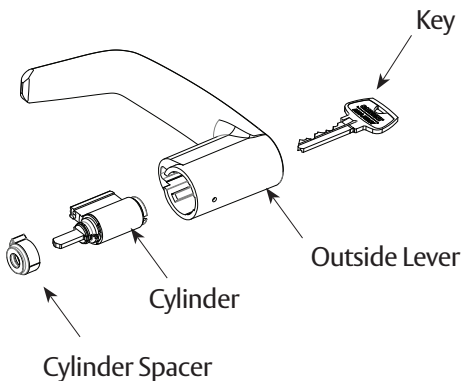


Figure 15



• Standard Levers (See Figure 16.)

Figure 16



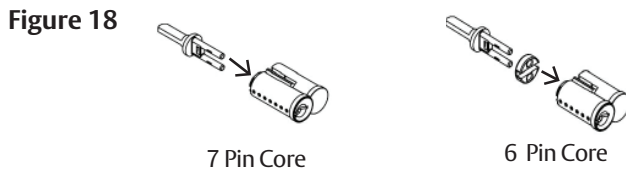
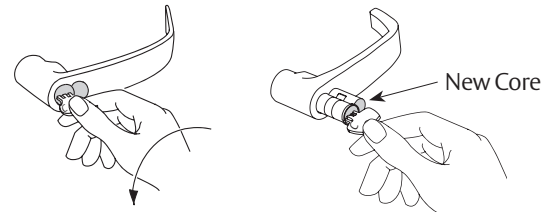
6. Cylinder Installation, continued

B. Interchangeable or Removable Core (LFIC or SFIC)

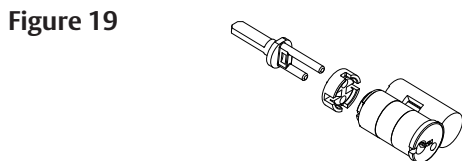
1. Remove temporary construction core or plastic core. If keyed, use Control Key (stamped "C") rotate 15° and pull key.
2. Remove tailpiece from the plastic core or construction core. See Figure 17.



3. Re-use tailpiece in permanent core.
 - For 6 pin SFIC cores, spacer must be used. See Figure 18.



- For XC LFIC cores, snap-on retainer must be installed onto tailpiece. Tail and retainer assembly will press fit onto back of core. See Figure 19.



4. Insert permanent core into lever with control key. Rotate 15° and remove key.

10X Line

with VSL Indicator Trim

Installation Instructions

SARGENT

ASSA ABLOY

7. Lever Removal & Installation (Standard levers shown)

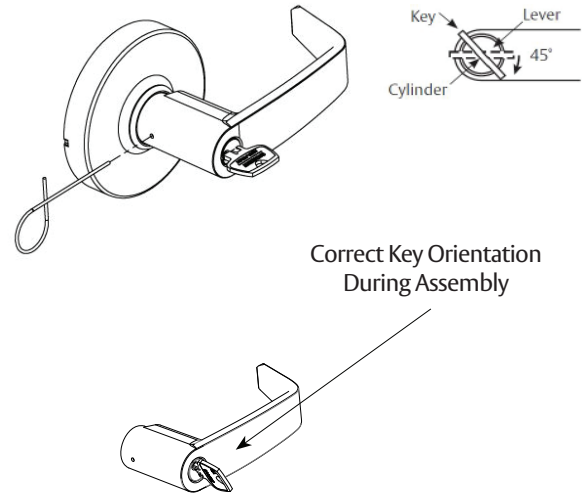
A. Standard Cylinder

To Remove:

Rotate key 45° and hold. Depress lever catch with lever removal tool, remove lever.

To Install:

With driver points at 6 and 12 (See Figure 20 on Page 11.), rotate key 45° in either direction, and then slide the lever on over the lever catch. Confirm the lever will not pull off.



B. Interchangeable or Removable Core

To Remove:

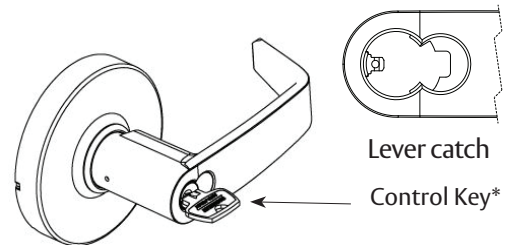
Remove core and tailpiece, using control key (stamped "C").

Insert slotted screwdriver or lever removal tool into the cylinder opening and make contact with the lever catch.

Pull lever catch horizontally towards the opposite side of the cylinder opening and remove lever.

To Install:

Without the core installed, slide the lever over the lever catch. Confirm the lever will not pull off. Install core and tailpiece, using control key (Stamped "C").



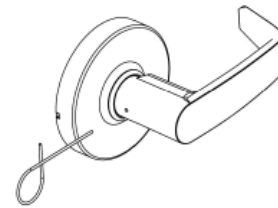
C. Plain Lever

To Remove:

Depress lever catch with lever removal tool, remove lever.

To Install:

Slide lever on over the lever catch. Confirm the lever will not pull off.



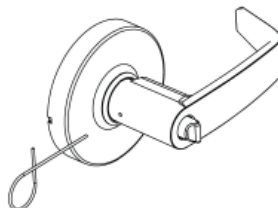
D. Push / Turn Button

To Remove:

Depress lever catch with lever removal tool, remove lever.

To Install:

Slide lever on over the lever catch. Confirm the lever will not pull off.



8. Lock Timing

Timing is required if cylinders were not provided factory installed. To verify and adjust timing:

A. Functions 10XG37, 10XG54

1. Remove cylinder lever to view internal cam. See Figure 20.
2. Adjust internal cam using a slotted screwdriver rotating fully counterclockwise.
3. Confirm that cam drive points are at the 6 and 12 o'clock positions
4. Re-install levers. See page 10.
5. Test cylinder with key before closing door.
6. Confirm key rotates 360° in both directions from the shed position.
7. If key does not rotate 360°, repeat steps 1-6.

B. Function 10XG38

1. Remove cylinder levers to view internal cam. See Figure 20.
2. Adjust internal cam on each side. To adjust:
 - a. Use a slotted screwdriver to rotate cam fully clockwise.
 - b. Rotate cam back until the driver points at the 6 and 12 o'clock position.
3. Re-install levers. See page 10.
4. Test cylinders with key before closing door.
5. Confirm outside key rotates approximately 180° in both directions.
6. If outside key rotates 360°, repeat steps 1-5.

C. Function 10XG53

1. Remove cylinder lever to view internal cam. See Figure 20.
2. Adjust internal cam using a slotted screwdriver rotating fully clockwise.
3. Confirm that cam drive points are at the 6 and 12 o'clock positions.
4. Re-install levers. See Page 10.
5. Test cylinder with key before closing door.
6. Key should rotate approximately 225° counterclockwise from shed position to lock and less than 90° from shed position to unlock.
7. Repeat steps 1-6 if necessary to correct timing.

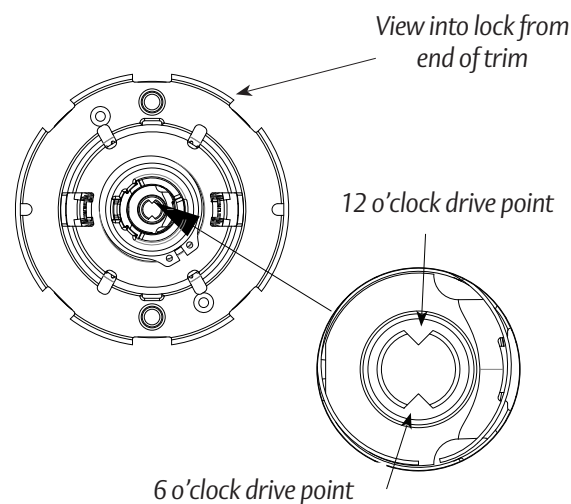


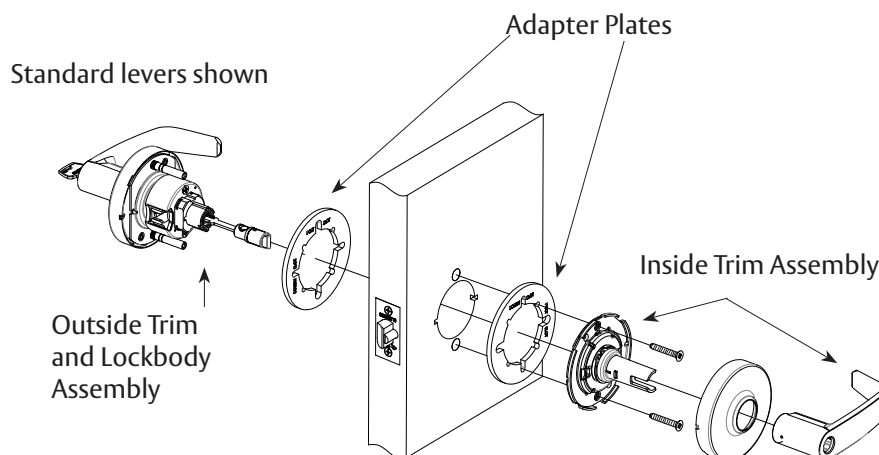
Figure 20

9. Miscellaneous Options

A. 1-3/8" Doors (1-Option)

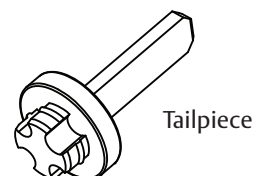
Install (1) adapter plate between the door and assemblies (both sides).

1. Inside trim to be aligned with holes marked screw slot.
2. Outside trim through-bolts to be aligned with through-bolt holes marked on adapter plate.



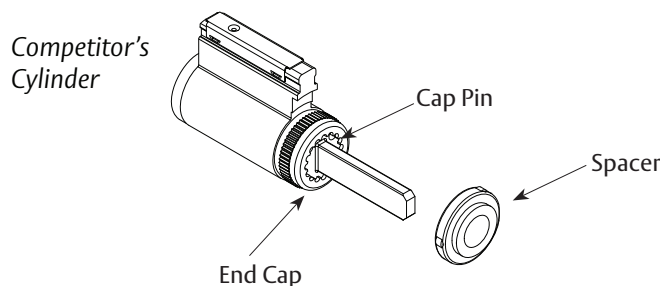
B. Lever to Accept Schlage® LFIC (SF-Option)

1. Lock provided less core.
2. Tailpiece included with lock.
3. Attach tailpiece to Schlage® LFIC and insert into the lever.



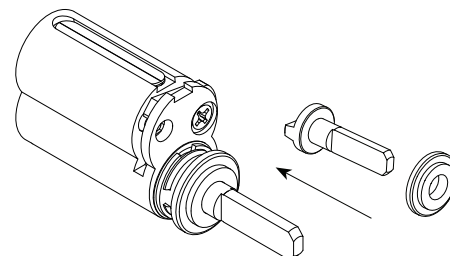
C. Lever to Accept Schlage® or ASSA ABLOY ACCENTRA™ Fixed Core Cylinder (30- or YC- Option)

1. Lock provided less core.
2. Depress cap pin and unscrew end cap to remove tailpiece from competitor cylinder.
3. Insert new tailpiece, in orientation shown.
4. Re-assemble end cap over new tailpiece.
5. Apply spacer, if needed.



D. Lever to Accept ASSA ABLOY ACCENTRA™ LFIC (YRC- Option)

1. Lock provided less core.
2. Slide provided spacer over tailpiece
3. Insert driver assembly into back of core.



⚠ WARNING

Attention Installer: Improper installation may result in damage to the product and void the factory warranty.

1-800-727-5477 • www.sargentlock.com

Copyright © 2024, 2025, SARGENT Manufacturing Company. All rights reserved. Reproduction in whole or in part without the express written permission of SARGENT Manufacturing Company is prohibited. Patent pending and/or patent www.assaabloydss.com/patents.

A8393 05/25 Rev 3

SARGENT®

ASSA ABLOY

Experience a safer
and more open world