

TEMPLATE

McKinney MKCL250 LH

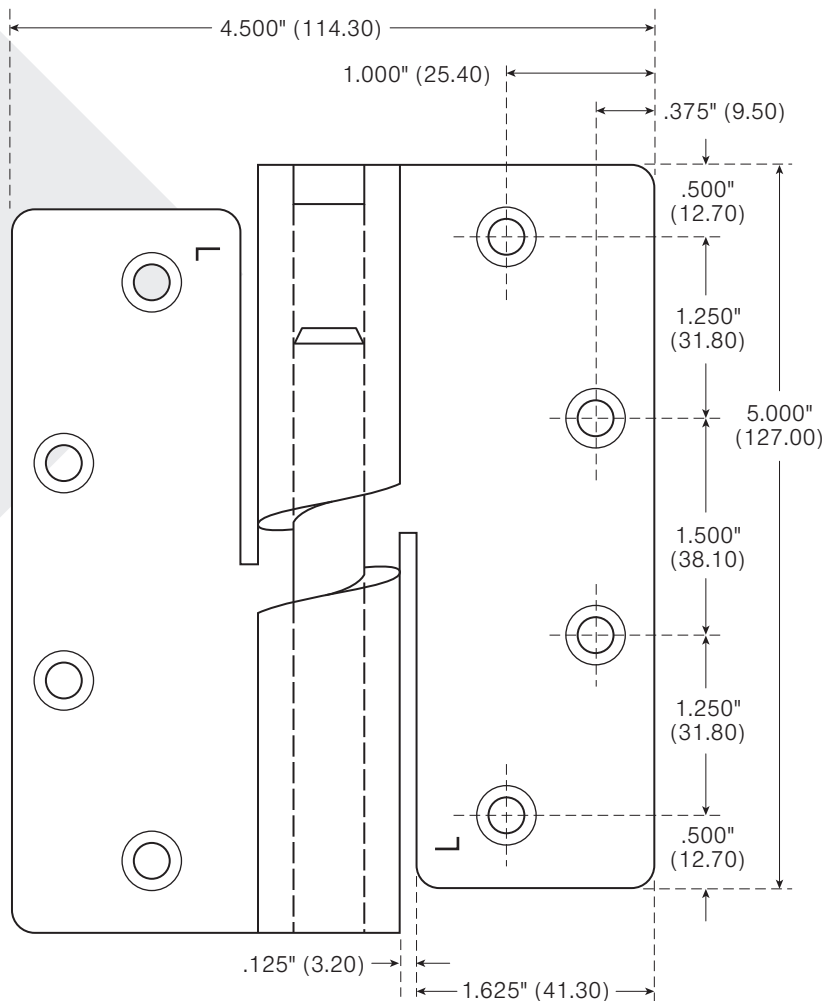
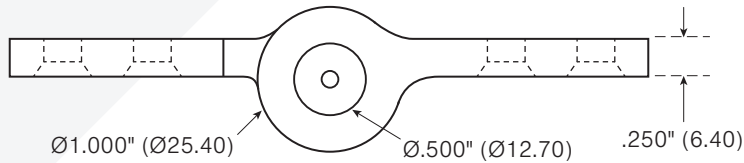
5" x 4 1/2" Standard Weight Cam Lift Hinges

McKinney

ASSA ABLOY

Experience a safer
and more open world

DO NOT SCALE
DIMENSIONS: INCHES (MM)
LEFT HAND SHOWN



TEMPLATE 55416

EFFECTIVE DATE:

September 1, 2023

SUPERSEDES:

All Previous

McKinney MKCL250 Cam Lift Hinge is made to conform to this drawing.

McKinney MKCL250 Cam Lift Hinge is handed.

MACHINE SCREW SIZE:

12-24 x 3/4"

LIFT:

5/16"