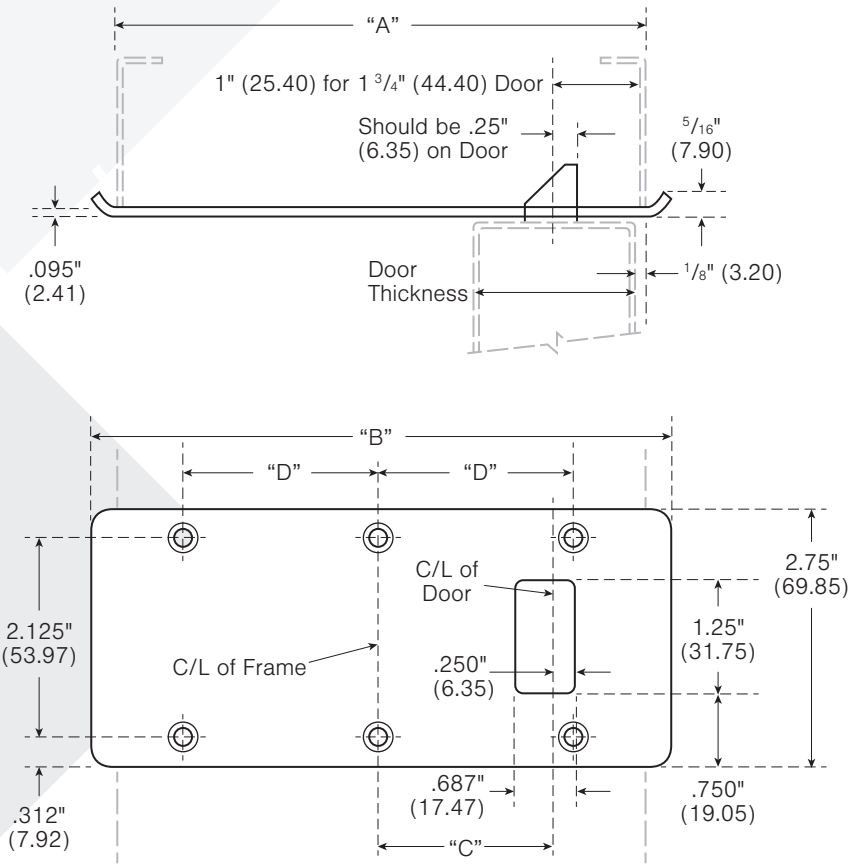


DO NOT SCALE
 DIMENSIONS: INCHES (MM)



TEMPLATE 55428

EFFECTIVE DATE:
 September 1, 2023

SUPERSEDES:
 All Previous

McKinney Template Double Lipped Strike for edge hung doors are made to conform to this drawing.

MACHINE SCREW SIZE:
 1/2 x 8-32 F.H.

WOOD SCREW SIZE:
 3/4 x 8 F.H.

*McKinney DLS-8 is designed for use with cylindrical bored lock sets and may not work properly with some mortise locks. Consult factory for mortise lock applications.

"A" FRAME SIZE	"B" (REF.)	"C" DOOR THICKNESS		"D"
		1 3/8" (34.90)	1 3/4" (44.40)	
4 3/4" (120.60)	5 5/16" (134.9)	1.562" (39.66)	1.375" (34.92)	1.375" (34.92)
5 5/8" (142.90)	6 3/16" (157.20)	2.000" (50.80)	1.812" (46.04)	1.750" (44.45)
5 3/4" (146.00)	6 5/16" (160.30)	2.062" (52.33)	1.875" (47.62)	1.875" (47.62)
5 7/8" (149.20)	6 7/16" (163.50)	2.125" (53.97)	1.937" (49.17)	1.875" (47.62)
6 1/4" (158.70)	6 13/16" (173.00)	2.312" (58.68)	2.125" (53.97)	2.125" (53.97)
6 3/4" (171.40)	7 5/16" (185.70)	2.562" (65.02)	2.375" (60.32)	2.375" (60.32)
7 1/8" (180.90)	7 11/16" (195.30)	2.750" (69.80)	2.562" (65.02)	2.500" (63.50)
7 3/4" (196.80)	8 5/16" (211.10)	3.062" (77.73)	2.875" (73.02)	2.875" (73.02)
8 1/4" (209.50)	8 13/16" (223.80)	3.312" (84.07)	3.125" (79.37)	3.125" (79.37)
8 3/4" (222.20)	9 5/16" (236.50)	3.562" (90.42)	3.375" (85.72)	3.375" (85.72)