

ASSA ABLOY

Experience a safer
and more open world

Glass Solutions Dallas Stocking Program



Introduction

The Dallas Stocking Program

In an effort to better serve you, we have expanded our hardware offering in our Dallas, Texas warehouse to now include Glass Solutions. Our Dallas Stocking Program includes a wide range of glass door hardware including rails, headers, patch fittings, sliding door hardware, closers, and electrified hardware. In this catalog you will find all of the items we stock in Dallas as well as their finishes. If you do not see a product or specific finish that you need, be sure to reach out to us! We are happy to ship it to you from our Rockwood, Pennsylvania facility. For additional product information and a complete list of available Glass Solutions hardware please view our [full line catalog](#).

Sustainability

Sustainability is the natural translation of ASSA ABLOY's Corporate Cornerstones: vision, realism, courage, and ethics. These cornerstones have been central to the Group's development since its creation in 1994. The environment, business ethics, and social responsibility are critical issues and are an integral part of our ASSA ABLOY society. Our unconditional aim is to make sustainability a central part of our business philosophy and culture; and even more importantly, to integrate sustainability into our overall business strategy.



Daylighting

There are many attributes to a sustainable built environment such as daylighting. Daylighting is the process of bringing natural light and direct sunlight into a building through windows, skylights, and interior glass. Exposure to natural light helps improve occupant health, happiness, productivity, and well-being, while decreasing total building energy costs by almost a third.

Glass

Glass creates openness in a space. In an office environment, openness promotes happiness, creativity, and communication, which are important aspects of good design. In creating a modern atmosphere, glass never looks old or outdated. Being more durable than most materials, glass has longevity that offers an ideally cost-effective solution. Also, glass applications are easily configured, allowing flexibility in any design. At ASSA ABLOY, we believe good design is more than just tangible; good design is imperceptible.

Sales & Support

Customer Service/Technical Product Support

For Glass Solutions questions please contact us via phone or email,
Call: 855 594 6989

Email: CustomerService.GlassSolutions@assaabloy.com
or TechSupport.GlassSolutions@assaabloy.com

Hours of Operation

Customer Service and Technical Support: 8:00 am – 4:30 pm PST

Ordering

To place an order:

Fax: 844 851 8665

Email: Orders.GlassSolutions@assaabloy.com

Website: www.assaabloyglass.us



Part Number Structure

Our part numbers were designed to facilitate ease of ordering and ensure all products are tied to the coordinating job. Each part number specifies the product family, glass thickness (if applicable), and finish.

ASSA ABLOY

Experience a safer
and more open world

Glass Thickness Sizing Codes

Glass Thickness	Size Code
3/8"	A
1/2"	B
9/16"	C
5/8"	D*
11/16"	E*
3/4"	F*
13/16"	G*

*Available on select products.

Finishes

US Code	ANSI/BHMA Code	Description
28	628	Clear Anodized Aluminum
32D	630	Satin Stainless Steel
26D	626	Satin Chrome Plated
BSP	N/A	Black Suede Powder Coat
315E	N/A	Black Anodized Equivalent
315	711	Black Anodized

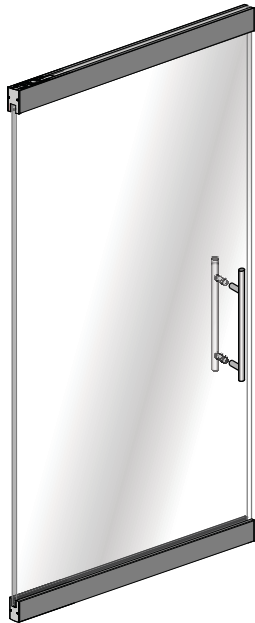
Glass Door Styles

There are four basic configurations of glass doors as established by the Glass Association of North America (GANA).

For the available variations of each style, refer to the Glass Door Configuration section.

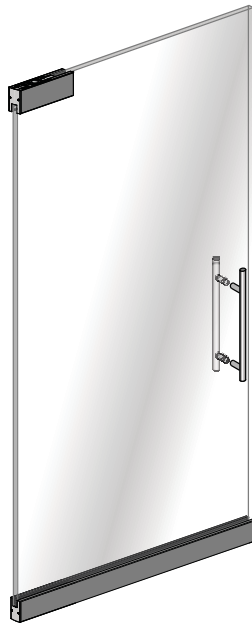
P

Full door rail top and bottom



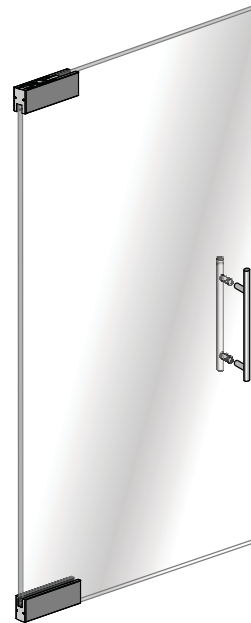
BP

Full door rail bottom and patch fitting top



A

Patch fitting top and bottom

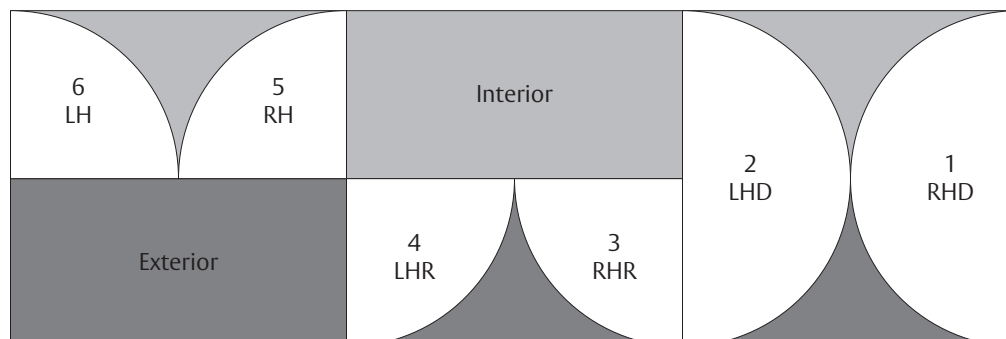


F

Patch fitting top and bottom with patch lock



Door Handing and Swing



ASSA ABLOY

Door Rails

Door Rails



Lengths available from 24" to 48".
Order Example: Need: 4" square door rail with overhead closer arm.
Order: DRS-4AC, 32D, 35.75."

Part # (Add Finish)	Profile	Height	Glass Sizes	Finish
DRT-275BD	Tapered	2.75"	B-D	32D, 28, BSP, 315
DRT-4AC	Tapered	4"	A-C	32D, 28, BSP, 315
DRS-4AC	Square	4"	A-C	32D, 28, BSP, 315
DRS-4DG	Square	4"	D-F	32D, 28, BSP, 315
DRT-4DG	Tapered	4"	D-F	32D, 28, BSP, 315

Door Rail Sub Assemblies

Part # (Add Finish)	Code	Description	Finish
OHC-609-ARM	A	OHC-609-ARM	N/A
PV-WALKBEAM	P	PV-WALKBEAM	32D, BSP, 315E
PV-ENDLOAD	P	Endload Bottom Pivot	N/A
PV-300ENDLOAD	P300	300 lb. End Load Bottom Pivot	32D, BSP, 315E
FC-6275/6280-ARM	A	FC-6275/6280-ARM	N/A
PV-H340	H340P	Heavy Duty Walking Beam Pivot	26D
PV-340	340P	Rixson Walking Beam Pivot	26D

Door Pulls

Rockwood Decorative Door Pulls



Part # (Add Finish)	Material	Size	Finish
RM3301BTB1224	Stainless Steel	12" CTC, 24" Overall	32D, BSP
RM3301BTB2436	Stainless Steel	24" CTC, 36" Overall	32D, BSP
RM3301BTB3648	Stainless Steel	36" CTC, 48" Overall	32D, BSP
RM3301BTB4860	Stainless Steel	48" CTC, 60" Overall	32D

Back to Back Mounting included for 1/2" glass doors

Sliding Door Hardware

Sliding Hardware

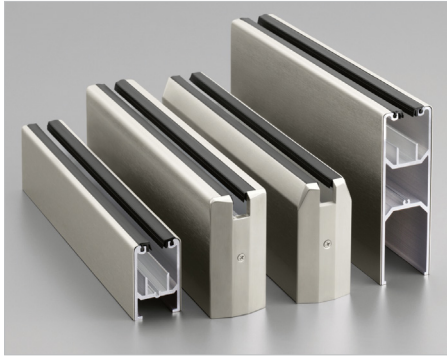


Part # (Add Finish)	Profile	Height	Glass Sizes	Finish
STS-G60X36/42	90"	36" - 42"	198 lbs	32D, BSP

ASSA ABLOY

Experience a safer
and more open world

Sidelite Glazing Hardware



Sidelite Rails

Part # (Add Finish)	Profile	Height	Glass Size	Finish
SRS-4AC	Squared	4"	AC	32D, 28, BSP
SRT-4AC	Tapered	4"	AC	32D, 28, BSP

Dry U-Channel

Part # (Add Finish)	Height	Width	Finish
UCD-1625X1875	1 5/8"	1 7/8"	32D, 28, BSP, 315
UCD-1625X1625	1 5/8"	1 5/8"	32D, 28, BSP, 315

Dry U-Channel End Caps

Part # (Add Finish)	Height	Width	Finish
ECU-1625X1625	1 5/8"	1 5/8"	32D, 28, BSP, 315
ECU-1625X1875	1 5/8"	1 7/8"	32D, 28, BSP, 315

Wet/Dry U-Channel

Part # (Add Finish)	Height	Width	Finish
UWD-1000X1000	1"	1"	32D, 28, BSP, 315
UWD-1750X1000	1 3/4"	1"	32D, 28, BSP, 315
UWD-2000X1000	2"	1"	32D, 28, BSP, 315

Wet/Dry U-Channel End Caps

Part # (Add Finish)	Height	Width	Finish
ECU-1000X1000	1"	1"	32D, 28, BSP, 315
ECU-1750X1000	1 3/4"	1"	32D, 28, BSP, 315
ECU-2000X1000	2"	1"	32D, 28, BSP, 315

Dry U-Channel Gasketing

Part #	Glass Sizes	Roll Length
GD-ROLLIN-B.BLACK	B	500'

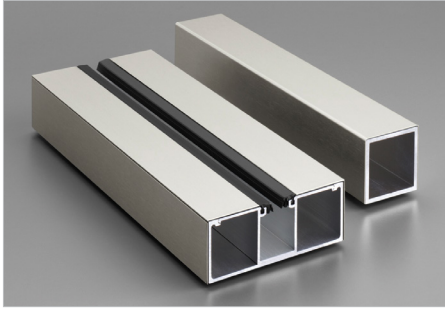
Wet/Dry U-Channel Gasketing

Part #	Glass Sizes	Roll Length
GD-WEDGE BLACK	B	100'

ASSA ABLOY

Headers

2-Piece Headers



Part # (Add Finish)	Prep Type	Height	Width	Finish
HDR-1750X4000-OHC	1 Closer	1 3/4"	4"	32D, 28, BSP
HDR-1750X4500-OHC	1 Closer	1 3/4"	4 1/2"	32D, 28, BSP
HDR-1750X4000-PIV	1 Pivot	1 3/4"	4"	32D, 28, BSP
HDR-1750X4500-PIV	1 Pivot	1 3/4"	4 1/2"	32D, 28, BSP

Lengths available from 24" to 48"

Part # (Add Finish)	Glass Sizes	Height	Width	Finish
HDR-1750X4000-SDL	A-C	1 3/4"	4"	32D, 28, BSP
HDR-1750X4000-SDL	A-C	1 3/4"	4 1/2"	32D, 28, BSP

Header Accessories

Part # (Add Finish)	Description	Length	Finish
ECH-1750x4000	1 3/4" x 4" End Cap		32D, 28, BSP
ECH-1750x4500	1 3/4" x 4 1/2" End Cap		32D, 28, BSP
DS-3000	Single Acting Door Stop (Single Dr)	3"	32D, 28, BSP
DS-6000	Double Acting Door Stop (Double Dr)	6"	32D, 28, BSP

Patch Fittings

Patch Fittings



Part # (Add Finish)	Where Used	Glass Sizes	Incl Parts	Finish
PFD-10BC	Door Bottom	B, C	Pivot/ Closer Ins	32D, 28, BSP, 315E
PFD-20BC	Door Top	B, C	Pivot Ins	32D, 28, BSP, 315E
PFD-22BC	Door Top	B, C	OHC Ins	32D, 28, BSP, 315E
PFT-34BC	Transom	B, C	Pivot, Stop, or Blank	32D, 28, BSP, 315E
PFT-40BC	Transom/SL	B, C	Pivot, Stop, or Blank	32D, 28, BSP, 315E
PFT-60BC	Transom/SL	B, C	Stop, Blank	32D, 28, BSP, 315E
PFD-100LBC	Bottom Patch Lock	B, C		32D, 28, BSP, 315E

Hydraulic Patch Fittings

Part # (Add Finish)	Description	Hold Open	Finish
PFD-HYD90HO	Hydraulic Patch Fitting 90° Hold Open	90	32D, BSP, 315E
PFD-HYD105HO	Hydraulic Patch Fitting 105° Hold Open	105	32D, BSP, 315E
PFD-HYDNHO	Hydraulic Patch Fitting Non Hold Open	N/A	32D, BSP, 315E

Hydraulic Hinges

Part # (Add Finish)	Description	Mounting	Glass Sizes	Finish
HYD-HINGE	Hydraulic Hinge	Glass to Glass	A-G	32D
HYD-HINGE	Hydraulic Hinge	Glass to Wall	A-G	32D
HYD-HINGE-ADA	ADA Hydraulic Hinge	Glass to Glass	A-G	32D
HYD-HINGE-ADA	ADA Hydraulic Hinge	Glass to Wall	A-G	32D

Misc. Parts

Part # (Add Finish)	Description	Finish
PFD-LOCKCYL	1" Cylinder with Collar	32D, 28, BSP, 315E
PFD-LOCKTT	1" Thumbturn with Collar	32D, 28, BSP, 315E

ASSA ABLOY

Experience a safer
and more open world

Door Controls

Floor Closers



Part # (Add Finish)	Description	Hold Open	Spring	Finish
FC-6280	Standard Duty Floor Closer	80 to 175	3 - 6	32D, 28, BSP
FC-6275-90HO	Standard Duty Floor Closer, ADA	90	1 - 3	32D, 28, BSP

Floor Closer Accessories

Part # (Add Finish)	Description	Style	Finish
FC-SPIND-25	Spindle 1/4" (Use for 3/8" Clearance)	Standard	N/A
FC-SPIND-375	Spindle 3/8" (Use for 1/2" Clearance)	Standard	N/A
FC-SPIND-625	Spindle 5/8" (Use for 3/4" Clearance)	Standard	N/A
FC-SPIND-750	Spindle 3/4" (Use for 15/16" Clearance)	Standard	N/A

Overhead Concealed Closers and Accessories

Part # (Add Finish)	Description	Hold Open	Spring
OHC-609-90NHO	90° Back Stop, Non-Hold Open, with Mounting Clips	NHO	1 - 3 Adj
OHC-609-105NHO	105° Back Stop, Non-Hold Open, with Mounting Clips	NHO	1 - 3 Adj
OHC-609-90HO	90° Back Stop, Hold Open, with Mounting Clips	90°	1 - 3 Adj
OHC-609-105HO	105° Back Stop, Hold Open, with Mounting Clips	105°	1 - 3 Adj
OHC-304-90NHO	Heavy Duty – 90° Back Stop, Non-Hold Open, with Mounting Clips	90°	4
OHC-304-105NHO	Heavy Duty – 105° Back Stop, Non-Hold Open, with Mounting Clips	NHO	4
OHC-304-90HO	Heavy Duty – 90° Back Stop, Hold Open, with Mounting Clips	105°	4
OHC-304-105HO	Heavy Duty – 105° Back Stop, Hold Open, with Mounting Clips	105°	4
OHC-609-MC	Slotted Mounting Clips Compatible with OHC-609 and OHC-304		
OHC-609-ARM	End Load Overhead Closer Arm		

Use an auxiliary stop with OHC-304 and OHC-609.

Pivots

Part # (Add Finish)	Description	Min CLR	Max CLR	Finish
PF-SM-PIVOT	Surface Mount Pivot	1/8"	1/4"	32D, BSP, 315E
PF-ADJ-PIVOT	Adjustable Pivot for Patch Fitting	5/16"	5/8"	32D, 28, BSP, 315E

ASSA ABLOY

Panic Devices



Part # (Add Finish)	Latches	Mating Handle Shape	Mating Handle Length	Door Thickness	Finish
PDU8000	Up	None	None	1/2", 3/4"	32D, BSP
PDU8000-3	Up	Vertical	Full	1/2", 3/4"	32D, BSP
PDU8000-4	Up	Vertical	Half	1/2", 3/4"	32D, BSP
PDU8000-5	Up	Vertical	Short	1/2", 3/4"	32D, BSP
PDU8000-6	Up	Horizontal	Straight	1/2", 3/4"	32D, BSP
PDU8500	Up	None	None	1 3/4", 2 1/4"	32D, BSP
PDU8500-3	Up	Vertical	Full	1 3/4", 2 1/4"	32D, BSP
PDU8500-4	Up	Vertical	Half	1 3/4", 2 1/4"	32D, BSP
PDU8500-5	Up	Vertical	Short	1 3/4", 2 1/4"	32D, BSP
PDU8500-6	Up	Horizontal	Straight	1 3/4", 2 1/4"	32D, BSP

PDU8000 for use on all-glass doors, PDU8500 for use on aluminum storefront, wood, and metal doors. Black or white infill available.

Panic Strike Kits/Accessories

Part # (Add Finish)	Description	Keeper Length	Voltage	Mode	Finish
ESK-SGL-24D	Single Door	3/4"	24V DC	Fail Secure	32D, BSP
ESK-DBL-24D	Double Door	3/4"	24V DC	Fail Secure	32D, BSP
ESK-MS-SGL	Medium Stile Single Door	3/4"	24V DC	Fail Secure	32D, BSP
ESK-MS-DBL	Medium Stile Double Door	3/4"	24V DC	Fail Secure	32D, BSP
MSK-SGL	Single Door				32D, BSP
MSK-DBL	Double Door				32D, BSP
MSK-MS-DBL	Medium Stile Double Door				32D, BSP
ESK-1600-SGL	Single Door	1"	12V/24V AC/DC	Fail Secure/Fail Safe	32D, BSP
ESK-1600-DBL	Double Door	1"	12V/24V AC/DC	Fail Secure/Fail Safe	32D, BSP
ESK-9100	Single Door	1"	12V/24V AC/DC	Fail Secure/Fail Safe	32D, BSP
ESK-9200	Double Door	1"	12V/24V AC/DC	Fail Secure/Fail Safe	32D, BSP
LM/LMS	Lock Monitor				

Locking Pulls



Part #	Description	OA	Finish
LP3301DBU48.32D	Half Height Pull – Bolts Up	48"	32D
LP3301DBU48.BSP	Half Height Pull – Bolts Up	48"	BSP
LP3301DBU60.32D	Half Height Pull – Bolts Up	60"	32D
LP3301DBU60.BSP	Half Height Pull – Bolts Up	60"	BSP
LP3301DBD51.32D	Half Height Pull – Bolts Down	51"	32D
LP3301DBD51.BSP	Half Height Pull – Bolts Down	51"	BSP

For 1/2" glass applications only.

*48" and 60" overall locking up pulls include LPS12 Top Strike with Adjustable Stops, 51" overall locking down pulls include 570 Dust Proof Strike

**09 Cylinder (7-Pin SFIC Housing with ASSA ABLOY ACCENTRA® Core) and ADA thumbturn are standard

ASSA ABLOY

Experience a safer
and more open world

Electrified Hardware

Alarm Controls Magnetic Locks



Part # (Add Finish)	Description	Finish
MAG-600LB	Alarm Controls Mag Lock w/Sensor - 600 lbs Single	28
MAG-600DLB	Alarm Controls Mag Lock w/Sensor - 600 lbs Double	28
MAG-1200LB	Alarm Controls Mag Lock w/Sensor - 1200 lbs Single	28
MAG-1200DLB	Alarm Controls Mag Lock w/Sensor - 1200 lbs Double	28

Accessories

Part # (Add Finish)	Description	Finish
MAG-GDH	Glass Door Holder for Alarm Controls Mag Lock	28
MAG-AM3325	Adjustable Mounting Bracket for Alarm Controls - 600 lbs Single	28
MAG-AM3326	Mounting Bracket for Alarm Controls - 600 lbs Double	28
MAG-AM6325	Adjustable Mounting Bracket for Alarm Controls - 1200 lbs Single	28
MAG-AM6326	Mounting Bracket for Alarm Controls - 1200 lbs Double	28

Concealed Magnetic Locks

Part # (Add Finish)	Description	Finish
MAG-SAMBD	Shear Magnalock w/MBS/DPS - 12/24VDC, Self Aligning	N/A

Access Control

Part # (Add Finish)	Description	Finish
DL-GS3550	Digital Door Lock	Black

ASSA ABLOY

Notes

Notes

