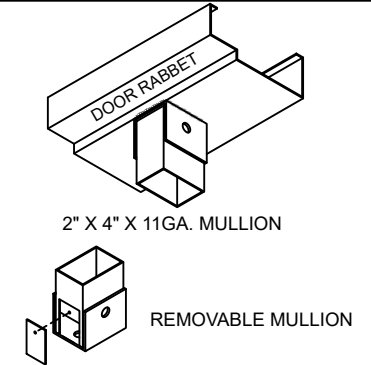
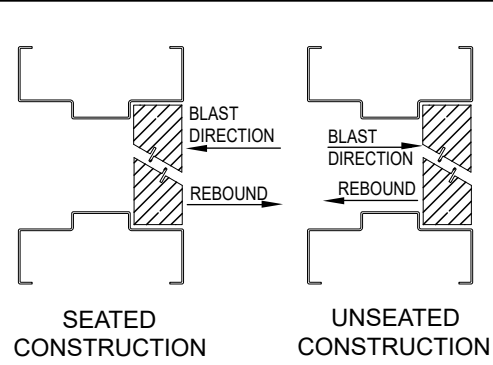
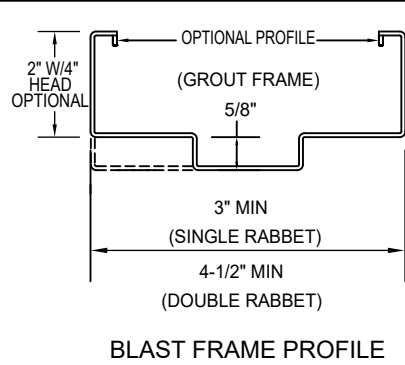
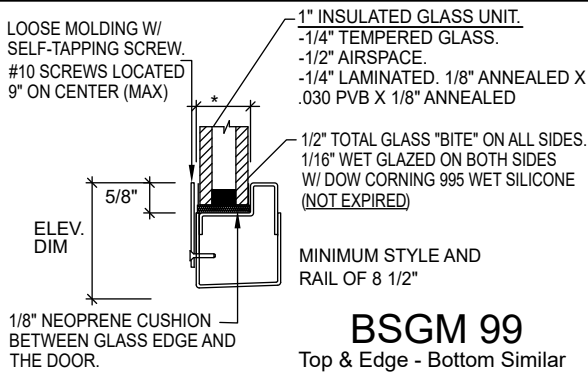
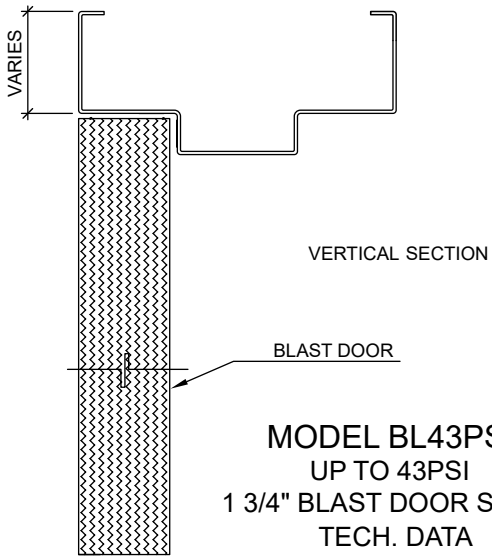


Model BL43PSI Blast Resistant

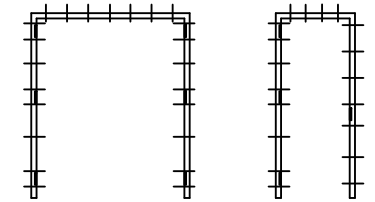


MODEL BL43PSI UTILIZES "S" PROFILE FRAME



SPECIFICATIONS:

- 1) All exposed surfaces of door and frame to receive one coat of rust inhibitive prime paint.
- 2) Blast resistant doors and frames have been qualified as complete assemblies. Hardware requirements from project specific governing agencies. Hardware to be purchased separately.
- 3) Assembly is equipped with metal blast resistant door, frame, and crated for shipment.
- 4) Door Thickness is 1 3/4".
- 5) U.L. fire labeled units require a closer and latching device.
- 7) Doors are to be formed of no less than 16 Gauge steel face sheets with welded smooth at the vertical edges and finished smooth.
- 8) Frames are to be formed of no less than 14 gauge sheet steel with corners mitered, continuously welded and ground smooth.
- 9) Grouting of frame is not required to maintain the blast rating.
- 10) Visions available upon request. Glass must be factory installed.



LOCATION OF THE ANCHORS. LOCATE DIRECTLY ABOVE AND BELOW HINGE/STRIKE PREPS TO CLEAR REINFORCEMENTS. LOCATE 6" FROM ENDS AT HEAD AND BOTTOM OF JAMBS. O.C. DIMENSIONS DETERMINED BY PROJECT BLAST REQUIREMENTS

43PSI ANCHOR AVAILABILITY

- METAL STUD
- WOOD STUD
- MASONRY WIRE
- MASONRY T
- PUNCH & DIMPLE

BLAST QUALIFICATIONS:

1. Up to 43psi peak reflective pressure
2. Position; Seated (Standard Hardware) - Unseated (Hardware Recommendations Available)
3. Rebound (unseated) greater than 0 (Hardware Recommendations Available)
4. Blast doors and frames are qualified to meet UFC 4-010-01 Low level of protection.
5. Max. of 60 min. fire rating at vision doors.

Engineering Calc. _____

Experience a safer
and more open world

FINISH:	STANDARD PRIMER PAINT; TESTED IN CONFORMANCE WITH ANSI A250.10
BLAST PERFORMANCE	TESTED AND IN COMPLIANCE WITH ASTM F 1642-04. DOOR SYSTEMS ARE IN COMPLIANCE WITH HMMA & SDI-133 SPECIFICATIONS.

For job-specific blast solutions please contact us at:
specialtyproducts.techsupport@assaabloy.com