

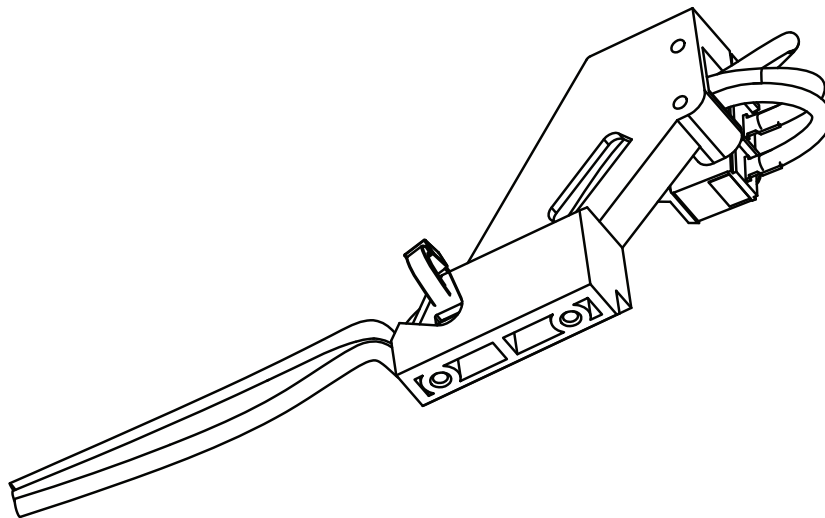
Installation Instructions

M92 Request to Exit - Signal Switch in Rail

PED80 Series Exit Devices

**Corbin
Russwin**

ASSA ABLOY



WARNING

This product can expose you to lead which is known to the state of California to cause cancer and birth defects or other reproductive harm. For more information go to www.P65warnings.ca.gov.

WARNING

Attention Installer: Improper installation may result in damage to the product and void the factory warranty.

For installation assistance contact Corbin Russwin
1-800-543-3658 • techsupport.corbinrusswin@assaabloy.com

Copyright © 2024, ASSA ABLOY Access and Egress Hardware Group, Inc. All rights reserved.
Reproduction in whole or in part without the express written permission of
ASSA ABLOY Access and Egress Hardware Group, Inc. is prohibited.

FM810 10/24

Experience a safer
and more open world

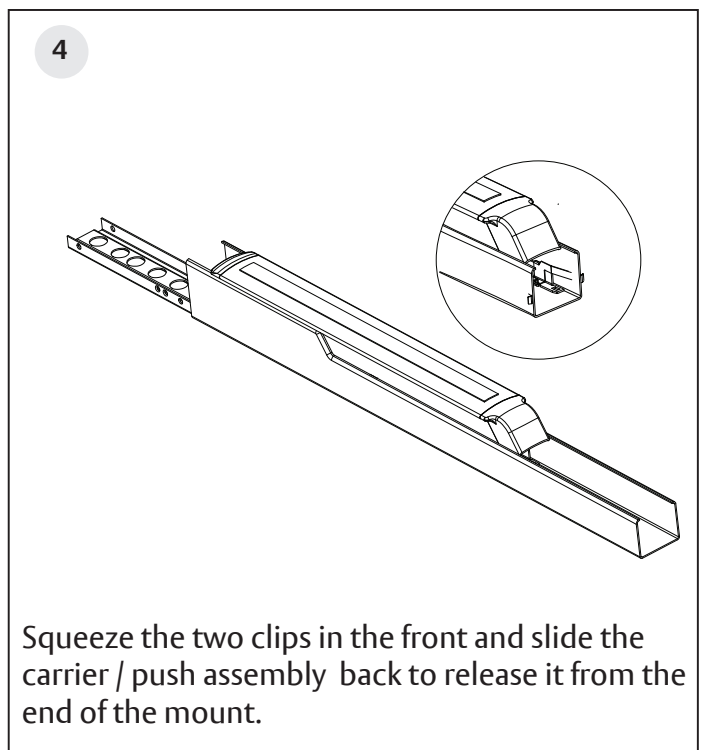
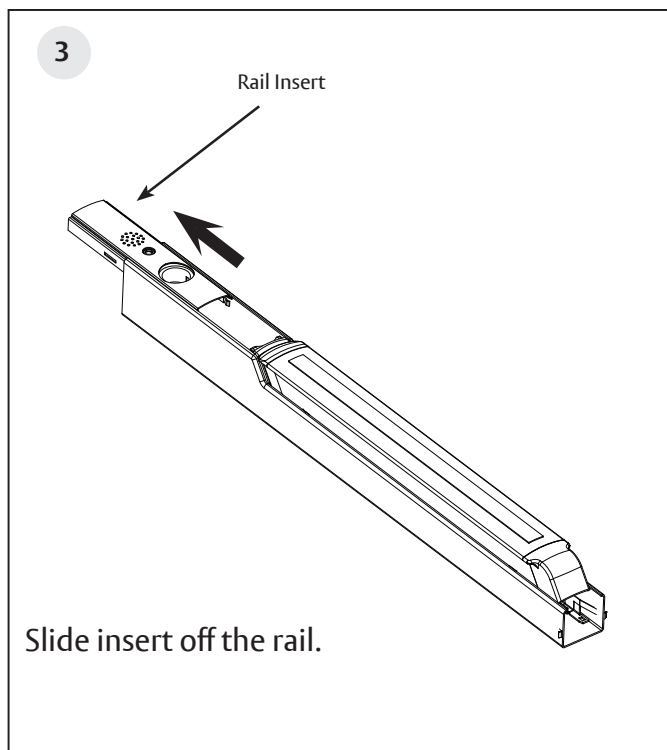
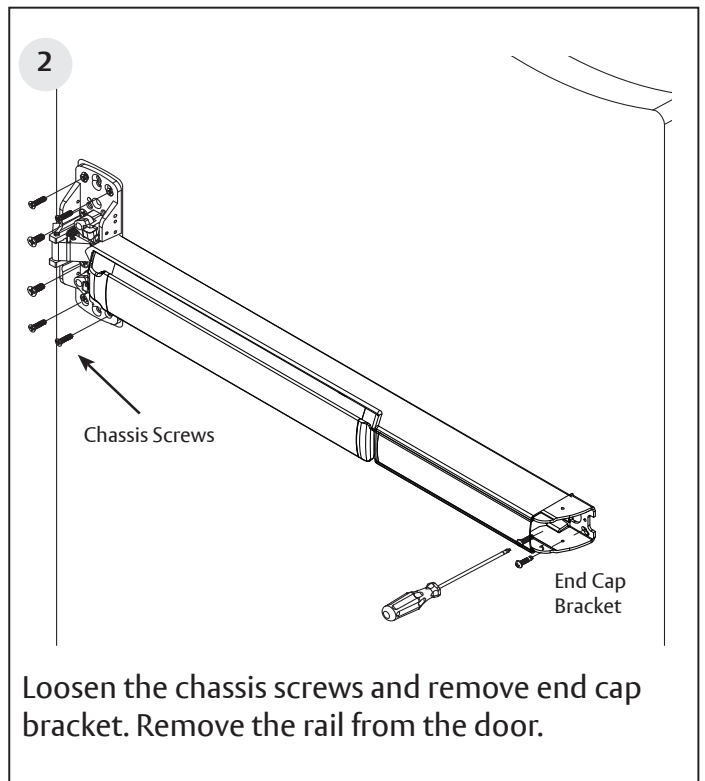
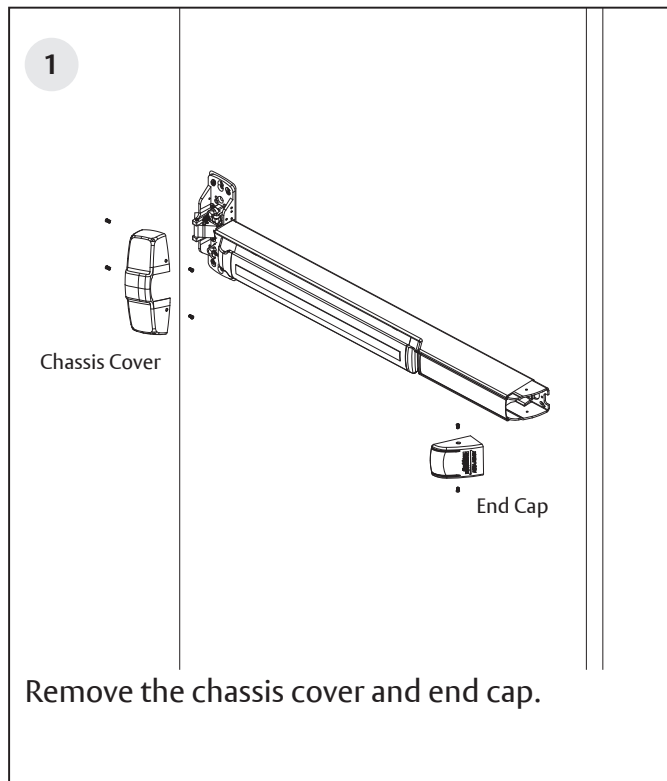
M92 Request to Exit - Signal Switch in Rail

PED80 Series Exit Devices

Installation Instructions



ASSA ABLOY

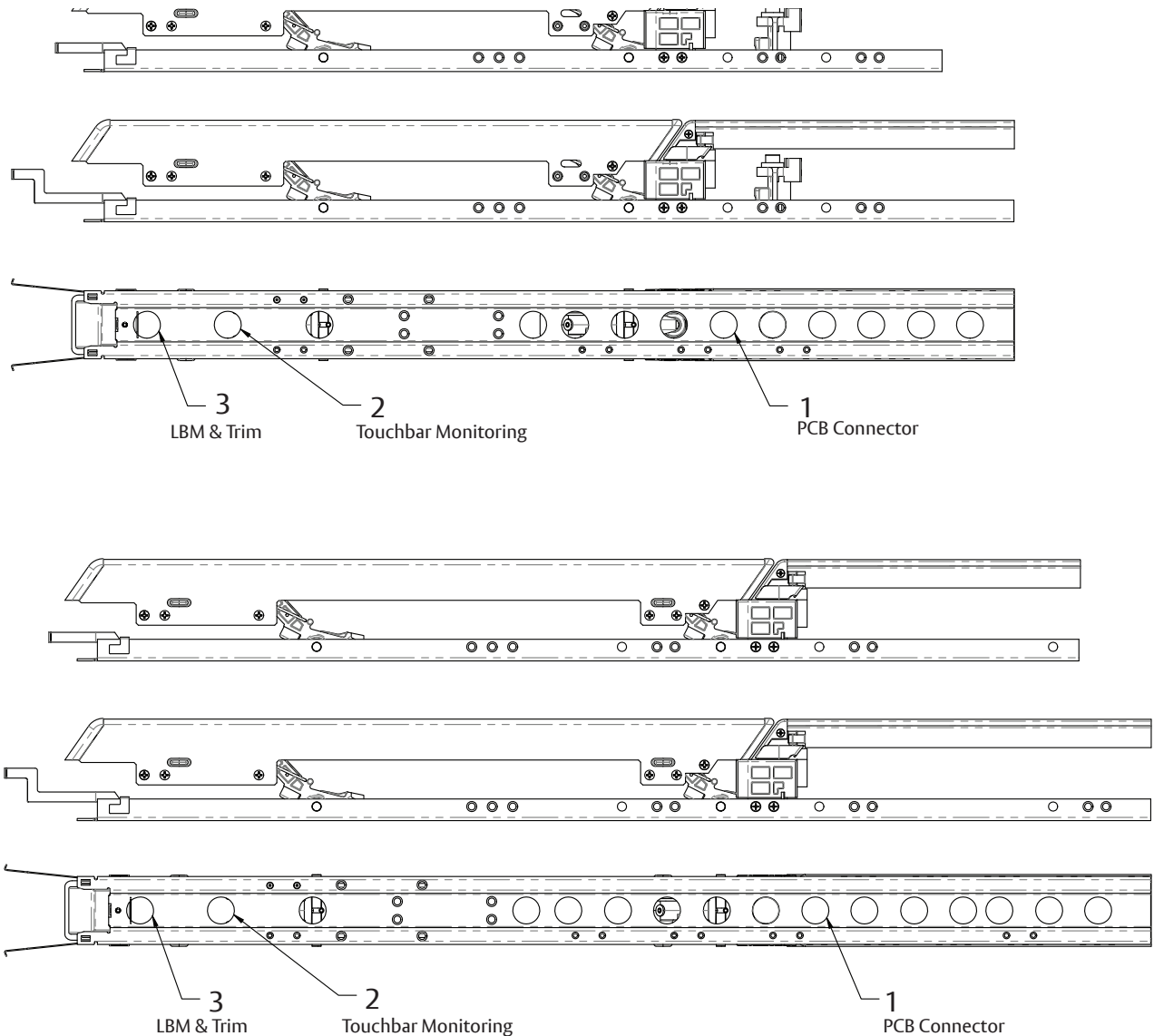


M92 Request to Exit - Signal Switch in Rail

PED80 Series Exit Devices

Installation Instructions

5



Add the three grommets into the rail mount. The placement will change based on the rail length.

M92 Request to Exit - Signal Switch in Rail

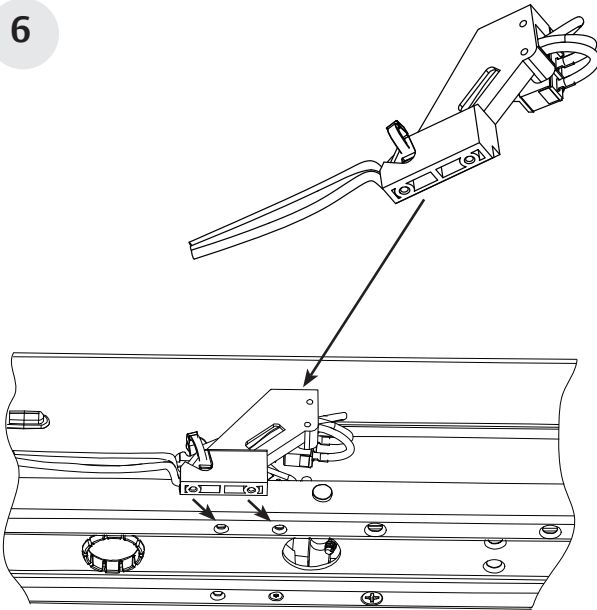
PED80 Series Exit Devices

Installation Instructions



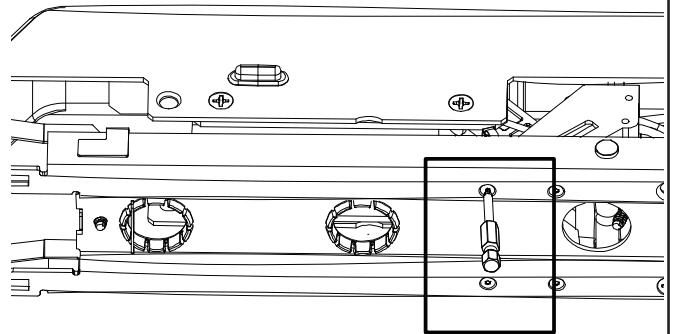
ASSA ABLOY

6



Fit the M92 switch inside the rail. Align with the above holes.

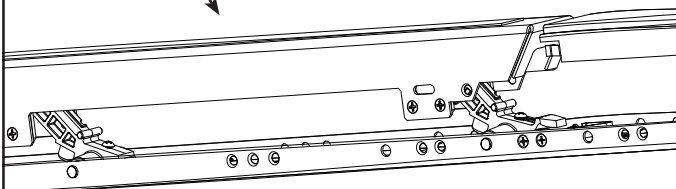
7



With a T6 bit screwdriver, attach the two Plastite #2-28 x 1/4" screws to the M92 bracket.

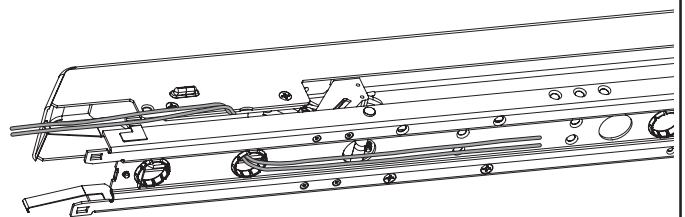
8

Push Bar



Confirm the M92 is installed correctly by pressing the push down.

9



Route both wires through the #2 grommet.

For installation assistance contact Corbin Russwin
1-800-543-3658 • techsupport.corbinrusswin@assaabloy.com

Copyright © 2024, ASSA ABLOY Access and Egress Hardware Group, Inc. All rights reserved.
Reproduction in whole or in part without the express written permission of
ASSA ABLOY Access and Egress Hardware Group, Inc. is prohibited.

FM810 10/24

M92 Request to Exit - Signal Switch in Rail

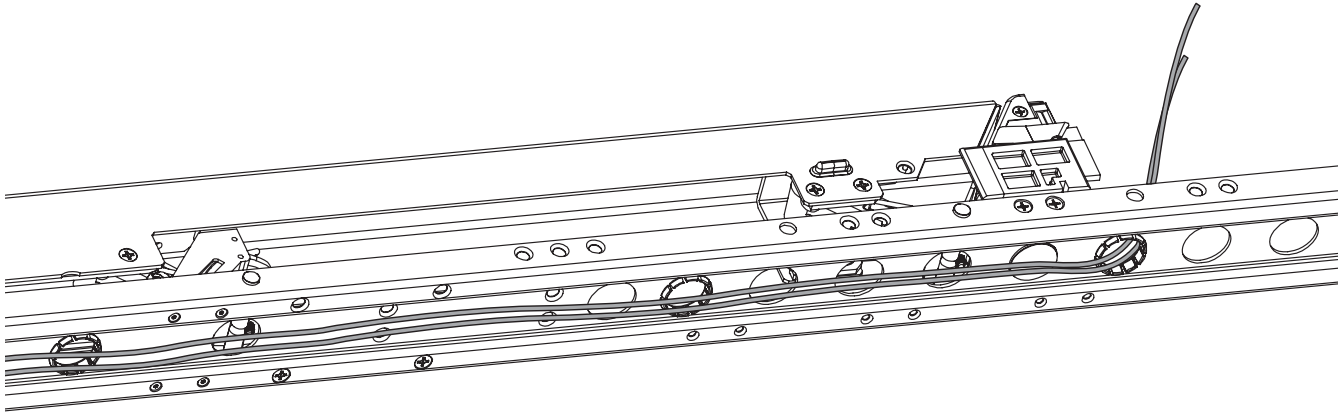
PED80 Series Exit Devices

Installation Instructions



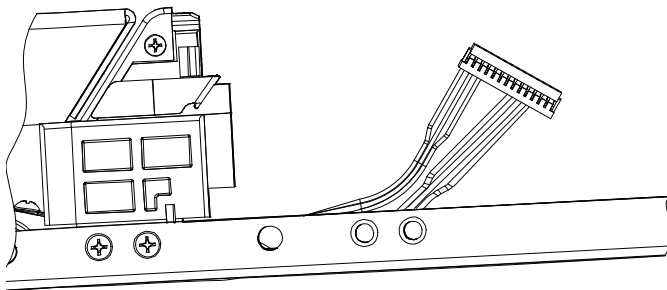
ASSA ABLOY

10



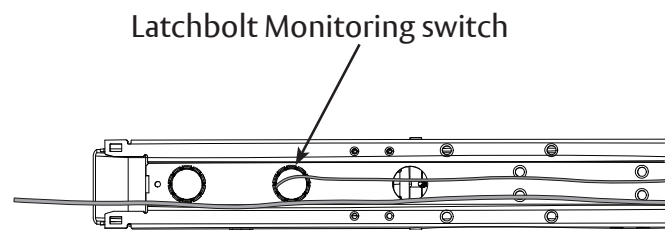
Route both wires down the outside of the rail, putting them through the first grommet. If Latchbolt Monitoring switch is not available, pull the wires through the entire length of the rail.

11



Connect the 24 pin connector to the E-Lynx Harness.

12



If the Latchbolt Monitoring switch harness is used, run the blue wire back down the length of the rail and insert it into the first grommet on the opposite end.

M92 Request to Exit - Signal Switch in Rail

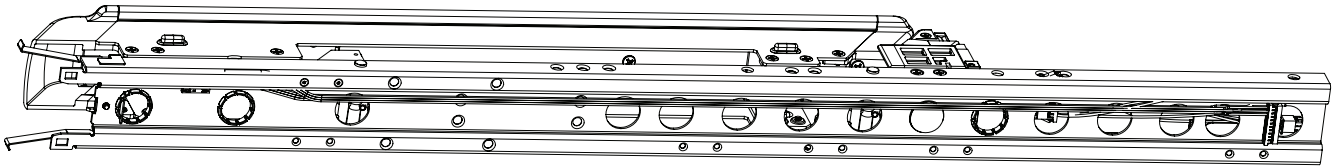
PED80 Series Exit Devices

Installation Instructions



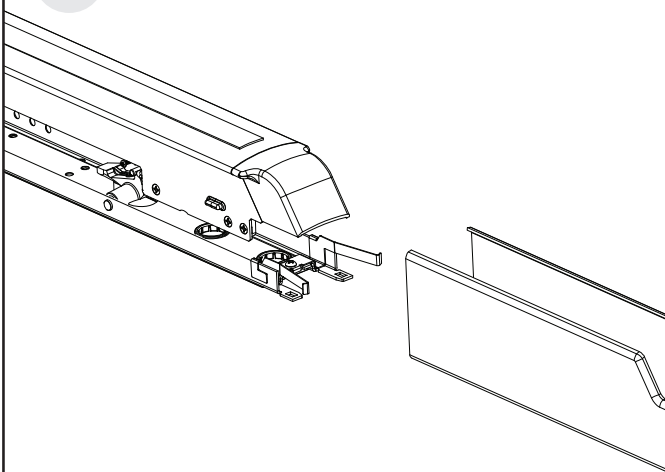
ASSA ABLOY

13



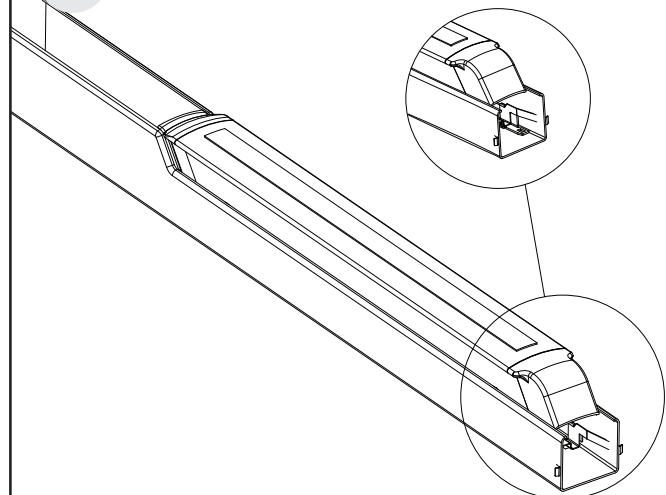
Smooth the wires flat along the rail and apply the wire shield, to the entire length.

14



Re-install carrier / push assembly back into the mount. Squeeze the front clip springs and slide the assembly into the mount until it clicks into place.

15



Note: Confirm that the two front clips go around the edge of the mount. This will hold the assembly in place.

For installation assistance contact Corbin Russwin
1-800-543-3658 • techsupport.corbinrusswin@assaabloy.com

Copyright © 2024, ASSA ABLOY Access and Egress Hardware Group, Inc. All rights reserved.
Reproduction in whole or in part without the express written permission of
ASSA ABLOY Access and Egress Hardware Group, Inc. is prohibited.

FM810 10/24

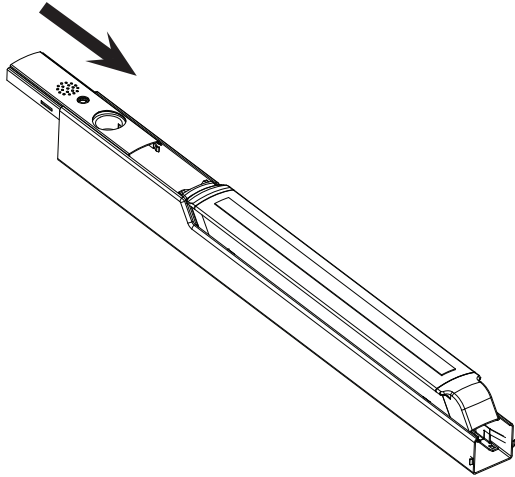
M92 Request to Exit - Signal Switch in Rail

PED80 Series Exit Devices

Installation Instructions

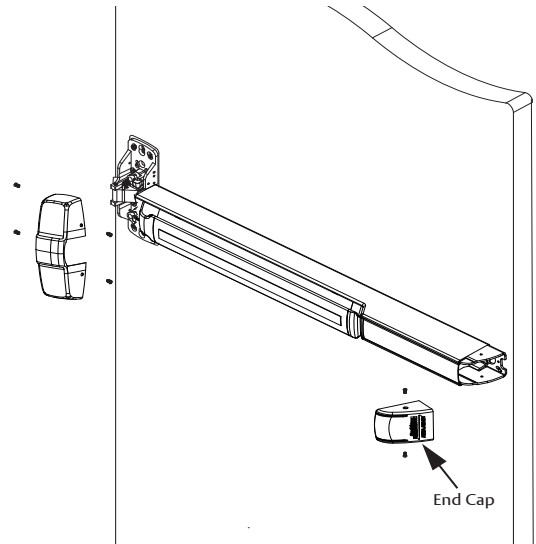


16



Reattach the insert, sliding it in until it connects to the top of the dogging slope.

17



Re-install device back onto the door. See installation instructions or www.corbinrusswin.com for more information.

Addendum

For instructions on the following PED80 Series Exit Devices, see:

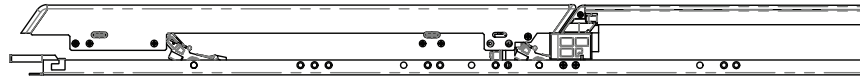
- (Latch Monitor Switch)
- (Exit Trim Lever Monitor Switch)
- (Push Bar Signal Switch)

Addendum

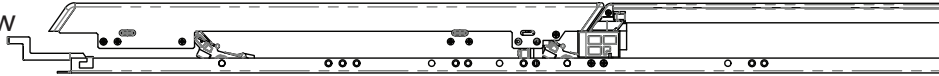
Grommet diagram for different size rails

List of configurations:

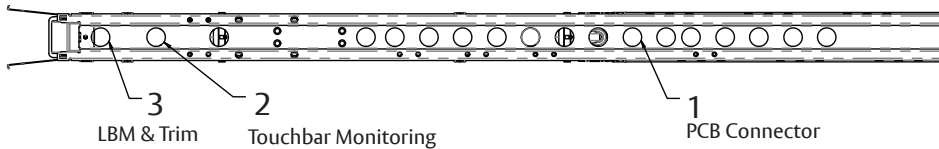
Configuration E Wide



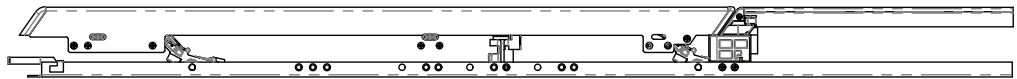
Configuration E Narrow



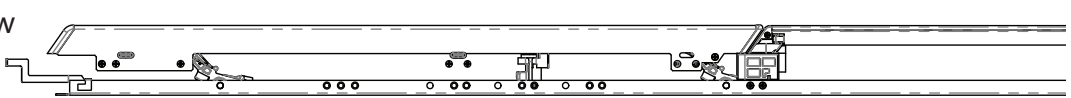
Wire Routing View



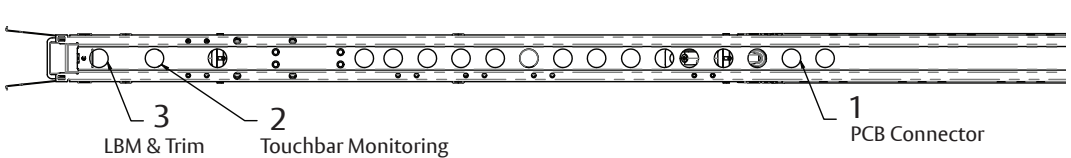
Configuration F Wide



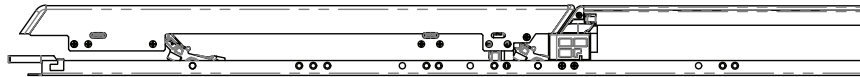
Configuration F Narrow



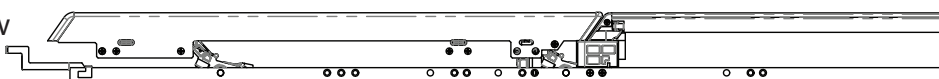
Wire Routing View



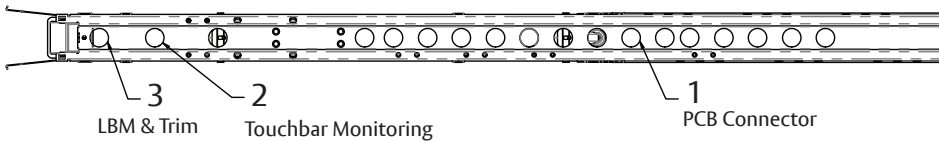
Configuration J Wide



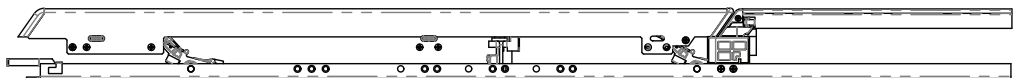
Configuration J Narrow



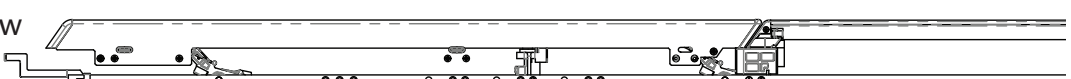
Wire Routing View



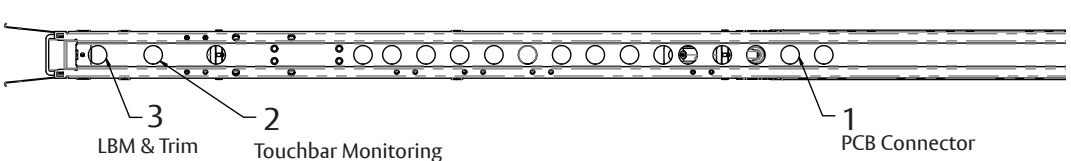
Configuration G Wide



Configuration G Narrow



Wire Routing View



For installation assistance contact Corbin Russwin
1-800-543-3658 • techsupport.corbinrusswin@assaabloy.com

Copyright © 2024 ASSA ABLOY Access and Egress Hardware Group, Inc. All rights reserved.
Reproduction in whole or in part without the express written permission of
ASSA ABLOY Access and Egress Hardware Group, Inc. is prohibited.