

**ASSA ABLOY**  
Opening Solutions

Experience a safer  
and more open world

# Glass Solutions 3-Day QuickShip Program



# Introduction

## 3-Day QuickShip Program

In an effort to better serve you, we have made a wide range of our glass door hardware including rails, headers, patch fittings, closers, and electrified hardware available to ship anywhere in the U.S. in three days or less. In this catalog you will find all of the Glass Solutions items available in less than 72 hours as well as their finishes. For additional product information and a complete list of available Glass Solutions hardware please view our [full line catalog](#).

## Sustainability

Sustainability is the natural translation of ASSA ABLOY's Corporate Cornerstones: vision, realism, courage, and ethics. These cornerstones have been central to the Group's development since its creation in 1994. The environment, business ethics, and social responsibility are critical issues and are an integral part of our ASSA ABLOY society. Our unconditional aim is to make sustainability a central part of our business philosophy and culture; and even more importantly, to integrate sustainability into our overall business strategy.



### Daylighting

There are many attributes to a sustainable built environment such as daylighting. Daylighting is the process of bringing natural light and direct sunlight into a building through windows, skylights, and interior glass. Exposure to natural light helps improve occupant health, happiness, productivity, and well-being, while decreasing total building energy costs by almost a third.

### Glass

Glass creates openness in a space. In an office environment, openness promotes happiness, creativity, and communication, which are important aspects of good design. In creating a modern atmosphere, glass never looks old or outdated. Being more durable than most materials, glass has longevity that offers an ideally cost-effective solution. Also, glass applications are easily configured, allowing flexibility in any design. At ASSA ABLOY, we believe good design is more than just tangible; good design is imperceptible.

## Sales & Support

### Customer Service/Technical Product Support

For Glass Solutions questions please contact us via phone or email,

Call: 855 594 6989

Email: [CustomerService.GlassSolutions@assaabloy.com](mailto:CustomerService.GlassSolutions@assaabloy.com)  
or [TechSupport.GlassSolutions@assaabloy.com](mailto:TechSupport.GlassSolutions@assaabloy.com)

### Hours of Operation

Customer Service and Technical Support: 8:00 am - 4:30 pm PST

### Ordering

To place an order:

Fax: 844 851 8665

Email: [Orders.GlassSolutions@assaabloy.com](mailto:Orders.GlassSolutions@assaabloy.com)

Website: [www.assaabloyglass.us](http://www.assaabloyglass.us)

### Part Number Structure

Our part numbers were designed to facilitate ease of ordering and ensure all products are tied to the coordinating job. Each part number specifies the product family, glass thickness (if applicable), and finish.



## Glass Thickness Sizing Codes

Glass Thickness	Size Code
3/8"	A
1/2"	B
9/16"	C
5/8"	D*
11/16"	E*
3/4"	F*
13/16"	G*

\*Available on select products.

## Finishes

US Code	ANSI/BHMA Code	Description
28	628	Clear Anodized Aluminum
32D	630	Satin Stainless Steel
26D	626	Satin Chrome Plated
BSP	N/A	Black Suede Powder Coat

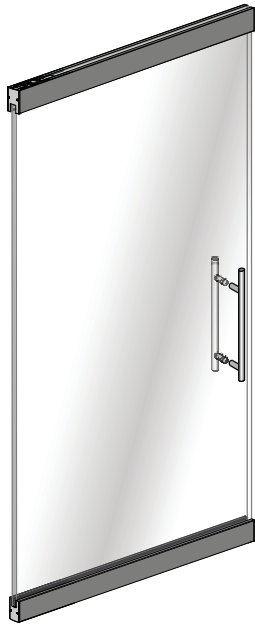
## Glass Door Styles

There are four basic configurations of glass doors as established by the Glass Association of North America (GANA).

For the available variations of each style, refer to the Glass Door Configuration section.

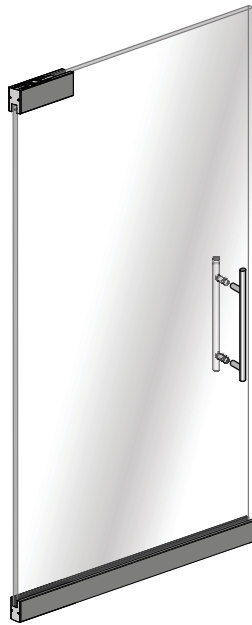
P

Full door rail top and bottom



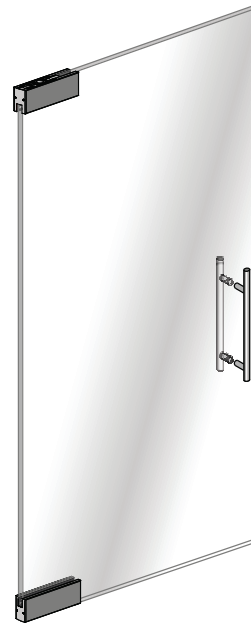
BP

Full door rail bottom and patch fitting top



A

Patch fitting top and bottom

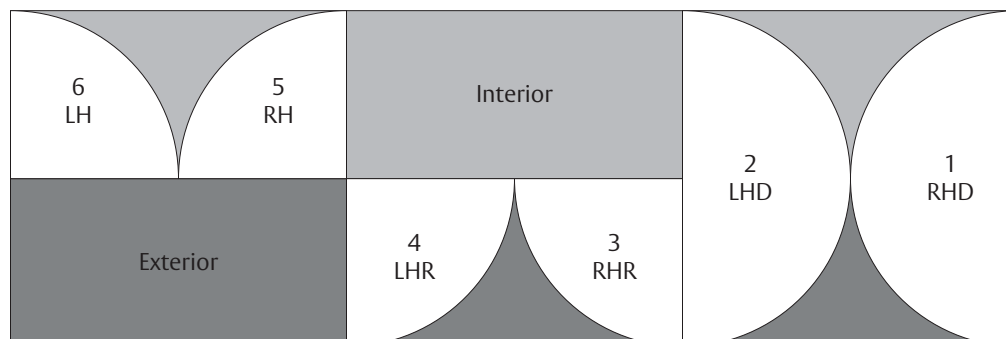


F

Patch fitting top and bottom with patch lock



## Door Handing and Swing



**ASSA ABLOY**  
Opening Solutions

## Door Rails

### Door Rails (35.75")



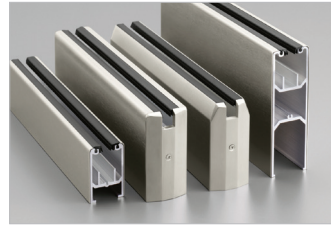
Lengths available in 35.75". Order Example: Need: 4" square door rail with overhead closer arm. Order: DRS-4AC, 32D, 35.75."

### Door Rail Sub Assemblies

Part # (Add Finish)	Profile	Height	Glass Sizes	Finish
DRT-4AC	Tapered	4"	A-C	32D, 28, BSP
DRS-4AC	Square	4"	A-C	32D, 28, BSP
DRT-275BD	Tapered	2.75"	B-D	32D, 28, BSP

Part # (Add Finish)	Code	Description	Finish
OHC-609-ARM	A	End Load Overhead Closer Arm, Compatible with OHC-609/OHC-304	N/A
DOHC-275	A	Arm for 2-3/4" & DRT-4PF/DRS-4PF	N/A
PV-WALKBEAM	P	Walking Beam Pivot	32D, BSP
PV-ENDLOAD	P	Adjustable Endload Bottom Pivot	N/A
PV-300ENDLOAD	P300	300 lb. End Load Bottom Pivot	32D
FC-6275/6280-ARM	A	Centerhung Arm for FC-6275/6280	N/A
FC-28-554ARM	554A	554 Arm for Rixson 28	N/A
PV-H345	H345P	Heavy Duty Extended Walking Beam Pivot	26D
PV-H340	H340P	Heavy Duty Walking Beam Pivot	26D
PV-340	340P	Rixson Walking Beam Pivot	26D

## Sidelite Glazing Hardware



### Wet/Dry U-Channel

Part # (Add Finish)	Height	Width	Length	Finish
UWD-1000X1000	1"	1"	138" or 144"	32D, 28, BSP
UWD-1750X1000	1 3/4"	1"	138" or 144"	32D, 28, BSP
UWD-2000X1000	2"	1"	138" or 144"	32D, 28, BSP

### Wet/Dry U-Channel End Caps

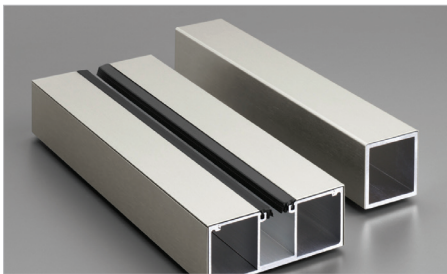
Part # (Add Finish)	Height	Width	Finish
ECU-1000X1000	1"	1"	32D, 28, BSP
ECU-1750X1000	1 3/4"	1"	32D, 28, BSP
ECU-2000X1000	2"	1"	32D, 28, BSP

### Wet/Dry U-Channel Gasketing

Part #	Glass Sizes	Roll Length
GD-WEDGE . BLACK	B	100'

## Headers

### 2-Piece Headers



Part # (Add Finish)	Prep Type	Height	Width	Finish
HDR-1750X4000-OHC	1 Closer	1 3/4"	4"	32D, 28, BSP
HDR-1750X4500-OHC	1 Closer	1 3/4"	4 1/2"	32D, 28, BSP
HDR-1750X4000-PIV	1 Pivot	1 3/4"	4"	32D, 28, BSP
HDR-1750X4500-PIV	1 Pivot	1 3/4"	4 1/2"	32D, 28, BSP

Max length for single doors is 36". Other lengths available at longer lead times.

### Header Accessories

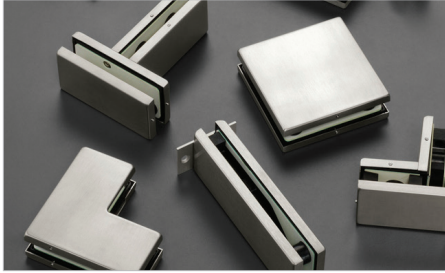
Part # (Add Finish)	Description	Finish
DS-3000	Single Acting Door Stop (Single Dr)	32D, 28, BSP
DS-6000	Single Acting Door Stop (Double Dr)	32D, 28, BSP

**ASSA ABLOY**  
Opening Solutions

Experience a safer  
and more open world

# Patch Fittings

## Patch Fittings



Part # (Add Finish)	Where Used	Glass Sizes	Incl Parts	Finish
PFD-10BC	Door Bottom	B, C	Pivot/Closer Ins	32D, 28, BSP
PFD-20BC	Door Top	B, C	Pivot Ins	32D, 28, BSP
PFD-22BC	Door Top	B, C	OHC Ins	32D, 28, BSP
PFT-34BC-P	Transom Patch	B, C	Wall Bracket, Pivot	32D, 32, 28
PFT-34BC-S	Transom Patch	B, C	Wall Bracket, Stop	32D, 32, 28
PFT-34BC-B	Transom Patch	B, C	Wall Bracket, Blank	32D, 32, 28
PFT-40BC-P	Transom/SL	B, C	Pivot Ins	32D, 32, 28
PFT-40BC-S	Transom/SL	B, C	Stop Ins	32D, 32, 28
PFT-40BC-B	Transom/SL	B, C	Blank Ins	32D, 32, 28
PFT-41BC-LH	Transom/SL/Fin	B, C	Pivot or Stop or Blank	32D, 32, 28
PFT-41BC-RH	Transom/SL/Fin	B, C	Pivot or Stop or Blank	32D, 32, 28
PFT-60BC	Transom/SL	B, C	Stop, Blank	32D, 32, 28
PFT-62BC	Transom/FL/Stop	B, C	Stop	32D, 32, 28
PFT-70BC	Transom Stop	B, C	Stop, Blank	32D, 32, 28
PFS-80BC	Sidelite Connector	B, C		32D, 32, 28
PFS-81BC	Sidelite Connector/Fin	B, C	Fin Bracket	32D, 32, 28
PFD-100LBC	Bottom Patch Lock	B, C		32D, 28, BSP

## Hydraulic Patch Fittings

Part # (Add Finish)	Description	Hold Open	Finish
PFD-HYD90HO	Hydraulic Patch Fitting 90° Hold Open	90	32D, 28, BSP
PFD-HYD105HO	Hydraulic Patch Fitting 105° Hold Open	105	32D, 28, BSP
PFD-HYDNHO	Hydraulic Patch Fitting Non Hold Open	N/A	32D, 28, BSP

## Hydraulic Hinges

Part # (Add Finish)	Description	Finish
HYD-HINGE	Hydraulic Hinge	32D

# Door Pulls

## Rockwood Decorative Door Pulls



Part # (Add Finish)	Material	Size	Finish
RM3301BTB1224	Stainless Steel	12" CTC, 24" Overall	32D
RM3301BTB1824	Stainless Steel	18" CTC, 24" Overall	BSP
RM3301BTB2436	Stainless Steel	24" CTC, 36" Overall	32D
RM3301BTB3036	Stainless Steel	30" CTC, 36" Overall	BSP
RM3301BTB3648	Stainless Steel	36" CTC, 48" Overall	32D, BSP
RM3301BTB4248	Stainless Steel	42" CTC, 48" Overall	BSP
RM3301BTB4860	Stainless Steel	48" CTC, 60" Overall	32D
RM3301BTB6072	Stainless Steel	60" CTC, 72" Overall	32D
RM3301BTB7284	Stainless Steel	72" CTC, 84" Overall	32D
RM3301BTB8496	Stainless Steel	84" CTC, 96" Overall	32D

Back to Back Mounting included for 1/2" glass doors

**ASSA ABLOY**  
Opening Solutions

# Door Controls

## Floor Closers



Part # (Add Finish)	Description	Hold Open	Spring	Finish
FC-28-90S-RH	Heavy Duty Floor Closer	90	N/A	26D
FC-28-90S-LH	Heavy Duty Floor Closer	90	N/A	26D
FC-28-105S-RH	Heavy Duty Floor Closer	105	N/A	26D
FC-28-105S-LH	Heavy Duty Floor Closer	105	N/A	26D
FC-PH28-90S-RH	Heavy Duty Floor Closer	90	5 lb. force	26D
FC-PH28-90S-LH	Heavy Duty Floor Closer	90	5 lb. force	26D
FC-PH28-105S-RH	Heavy Duty Floor Closer	105	5 lb. force	26D
FC-PH28-105S-LH	Heavy Duty Floor Closer	105	5 lb. force	26D
FC-6280	Standard Duty Floor Closer	80 to 175	3 - 6	32D, 28, BSP
FC-6275-90HO	Standard Duty Floor Closer, ADA	90	1 - 3	32D, 28, BSP
FC-6275-105HO	Standard Duty Floor Closer, ADA	90	1 - 3	32D, 28, BSP
FC-6275-NHO	Standard Duty Floor Closer, ADA	NHO	1 - 3	32D, 28, BSP

## Floor Closer Accessories

Part # (Add Finish)	Description	Style	Finish
FC-6275/6280-ARM	Centerhung Arm for 6275 & 6280	Standard	32D
FC-6275/6280-OFFARM	3/4" Offset Arm for 6275 & 6280	Offset	32D
FC-SPIND-25	Spindle 1/4" (Use for 3/8" Clearance)	Standard	N/A
FC-SPIND-375	Spindle 3/8" (Use for 1/2" Clearance)	Standard	N/A
FC-SPIND-625	Spindle 5/8" (Use for 3/4" Clearance)	Standard	N/A
FC-SPIND-750	Spindle 3/4" (Use for 15/16" Clearance)	Standard	N/A
FC-OFFSPIND-375	3° Offset Spindle 3/8" (for 1/2" clearance)	Offset	32D
FC-OFFSPIND-625	3° Offset Spindle 5/8" (for 3/4" clearance)	Offset	32D
FC-OFFSPIND-750	3° Offset Spindle 3/4" (for 15/16" clearance)	Offset	32D
FC-28ARM	Standard Arm for Rixson 28	Standard	32D
FC-28-554ARM	554 Arm for Rixson 28	Standard	32D

## Overhead Concealed Closers and Accessories

Part # (Add Finish)	Description	Hold Open	Spring
OHC-609-90NHO	Medium-Duty, with Mounting Clips	NHO	1 - 3 Adj
OHC-609-90HO	Medium-Duty, with Mounting Clips	90°	1 - 3 Adj
OHC-609-105NHO	Medium-Duty, with Mounting Clips	NHO	1 - 3 Adj
OHC-609-105HO	Medium-Duty, with Mounting Clips	105°	1 - 3 Adj
OHC-304-90NHO	Heavy-Duty, with Mounting Clips	NHO	4
OHC-304-90HO	Heavy-Duty, with Mounting Clips	105°	4
OHC-304-105NHO	Heavy-Duty, with Mounting Clips	NHO	4
OHC-304-105HO	Heavy-Duty, with Mounting Clips	105°	4

Use an auxiliary stop with OHC-304 and OHC-609.

## Pivots

Part # (Add Finish)	Description	Min CLR	Max CLR	Finish
PF-SM-PIVOT	Surface Mount Pivot	1/8"	1/4"	26D, 32D, 28, BSP
PF-FM-PIVOT	Floor Mount Pivot	7/16"	N/A	26D
PV-ENDLOAD	Adjustable End Load Bottom Pivot	3/8"	3/4"	26D
PV-300ENDLOAD	300 lb. End Load Bottom Pivot	5/16"	N/A	26D
PV-340	Walking Beam Pivot	1/8"	1/4"	26D
PV-H340	Heavy Duty Walking Beam Pivot	1/8"	1/4"	26D
PV-345	Extended Pin Walking Beam Pivot	1/8"	3/8"	26D
PV-H345	Heavy Duty Extended Pin Walking Beam Pivot	1/8"	3/8"	26D
PV-180	Top Offset Pivot	1/8"	3/16"	26D
PV-WALKBEAM	Walking Beam Pivot	1/8"	3/8"	32D, 28, BSP
PF-ADJ-PIVOT	Adjustable Pivot for Patch Fitting	5/16"	5/8"	32D, 28, BSP

**ASSA ABLOY**  
Opening Solutions

Experience a safer  
and more open world

## Electrified Hardware

### Alarm Controls Magnetic Locks



Part # (Add Finish)	Description	Finish
MAG-600LB	Alarm Controls Mag Lock w/Sensor - 600 lbs Single	28
MAG-600DLB	Alarm Controls Mag Lock w/Sensor - 600 lbs Double	28
MAG-1200LB	Alarm Controls Mag Lock w/Sensor - 1200 lbs Single	28
MAG-1200DLB	Alarm Controls Mag Lock w/Sensor - 1200 lbs Double	28

### Concealed Magnetic Locks

Part # (Add Finish)	Description	Finish
MAG-SAMBD	Shear Magnalock w/MBS/DPS - 12/24VDC, Self Aligning	32D
MAG-SAM2-24VDC	Shear Magnalock - 24VDC, Mini Version	32D

### M32 Magnalock

Part # (Add Finish)	Description	Finish
MAG-M32BD	M32 Magnalock - 600 lbs., 12/24VDC	32D

### M380E/M680E Magnalock

Part # (Add Finish)	Description	Finish
MAG-M380EBDX	M380E EcoMag Magnalock - 600 lbs., 12/24VDC	32D
MAG-M680EBDX	M680E EcoMag Magnalock - 1200 lbs., 12/24VDC	28

### Electrified Hardware Accessories

Part # (Add Finish)	Description	Finish
MAG-XMS	Motion Sensor	White
MAG-SREX-100	Motion Sensor	Black
MAG-EEB2	Emergency Exit Button	32D
MAG-EEB3N	Narrow Emergency Exit Button	32D

### Card Readers

Part # (Add Finish)	Description	Finish
RD-R100-IPS	R100, iCLASS SE, Wireless Reader w/ Paired Hub	Black

### Power Supplies

Part # (Add Finish)	Description	Finish
PS-AQD2-4C1	2 Amp, Dual Voltage, 4 Output, 1A PTC	Beige
PS-AQD4-8F8R2	4 Amp, Dual Voltage, 8 Relayed Outputs, 2A Glass Fuse	Beige
PS-AQD6-8F8R2	6 Amp, Dual Voltage, 8 Relayed Outputs, 2A Glass Fuse	Beige

**ASSA ABLOY**  
Opening Solutions

