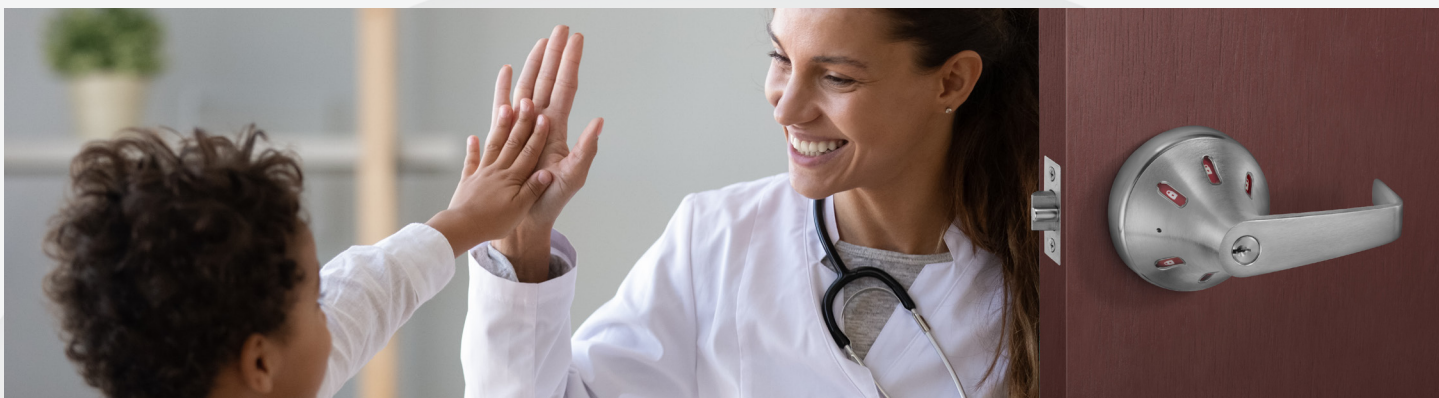


CLX3300 SERIES CYLINDRICAL LOCK WITH STATUS INDICATORS



**Precision Privacy
for Healthcare**

Experience a safer
and more open world



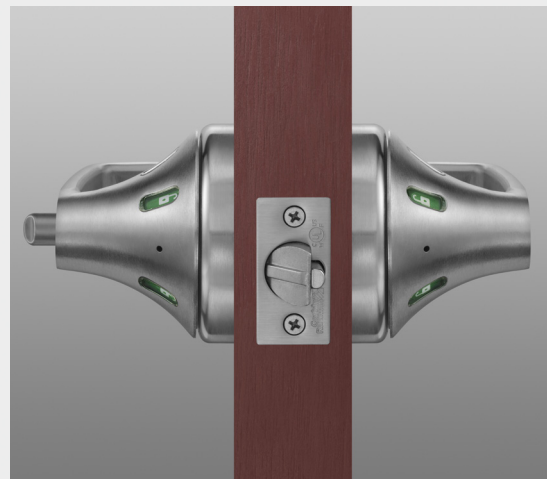
In healthcare settings, privacy and security are paramount. The CLX3300 Series with visual status indicators provide clear visibility of whether a door is locked or unlocked. Its easy-to-see indicator windows reduce interruptions in patient rooms, restrooms, and staff areas—supporting both patient dignity and security.

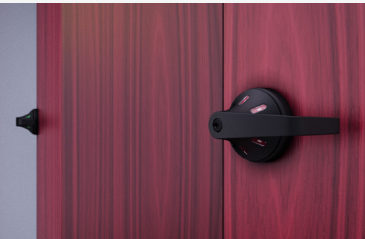
FEATURES:

- **Customizable Status Indicator:** Instantly shows lock status on one or both sides of the door, reducing unnecessary interruptions in patient rooms, restrooms, and staff-only areas.
- **Fast and Easy Confirmation:** Visibility from all angles allows for instant lock status confirmation, while the non-handed design simplifies installation for both new and retrofit projects.
- **Built for High-Traffic Durability:** Exceeds Grade 1 standards, providing a low-maintenance, long-lasting solution for high-use areas.

COMMON APPLICATIONS:

- **Critical Care Areas:** Surgical rooms, operating suite, trauma
- **Patient Care Areas:** Long term care, examination/treatment room, procedure room, physical therapy, patient room, nursery, medication storage cabinets, rooms & closets, pharmacy
- **General Use Areas:** Restrooms, mother's rooms, quiet rooms





Common Healthcare Functions

Outside	Inside	Series/Function	Type	ANSI No.	Function Description
		CLX3320	Privacy, Bedroom or Bathroom	F76A	<ul style="list-style-type: none"> • Outside lever locked by push button (lever handle is freewheeling in locked position) • Outside lever unlocked by emergency release tool outside, by rotating inside lever or by closing door • Inside lever always free
		CLX3330	Privacy, Bedroom or Bathroom	F76A	<ul style="list-style-type: none"> • Outside lever locked by push button (lever handle is freewheeling in locked position) • Outside lever unlocked by emergency cointurn outside, by rotating inside lever or by closing door • Inside lever always free
		CLX3320H	Hospital Privacy	—	<ul style="list-style-type: none"> • Outside lever locked by inside push button (lever handle is freewheeling in locked position) • Outside lever unlocked by simultaneously depressing outside pushbutton while rotating lever • Rotating inside lever or closing door also unlocks outside lever • Outside lever handle is freewheeling when locked
		CLX3351	Entrance or Office	F109	<ul style="list-style-type: none"> • Deadlocking latchbolt by lever either side, except when turn button locks outside lever. Pushing turn button in locks outside lever, requiring use of key outside to unlock. (Lever handle is freewheeling in locked position) • Turning inside lever unlocks outside lever • Pushing in and turning button locks outside lever, requiring key at all times. Turning inside lever does not unlock outside lever until button is manually turned to unlocked position. • Inside lever always free
		CLX3357	Storeroom or Closet	F86	<ul style="list-style-type: none"> • Deadlocking latchbolt by key in outside lever or by rotating inside lever (lever handle is freewheeling in locked position) • Inside lever always free
		CLX3361	Entry or Office	F82A	<ul style="list-style-type: none"> • Deadlocking latchbolt by lever either side, except when push button locks outside lever • Push button released by turning inside lever or by key in outside lever (lever handle is freewheeling in locked position) • Closing door does not release push button • Inside lever always free

Indicates function available with status indicator trim.



Hurricane



In U.S.
Corbin Russwin
Architectural Hardware
225 Episcopal Road
Berlin, CT 06037
Phone: 800-543-3658
Fax: 800-447-6714
www.corbinrusswin.com

In Canada
ASSA ABLOY
Door Security Solutions
Canada 160 Four Valley Drive
Vaughan, Ontario Canada L4K 4T9
Phone: 800-461-3007
Fax: 800-461-8989
www.assaabloydss.ca



Scan for our full suite of status indicators