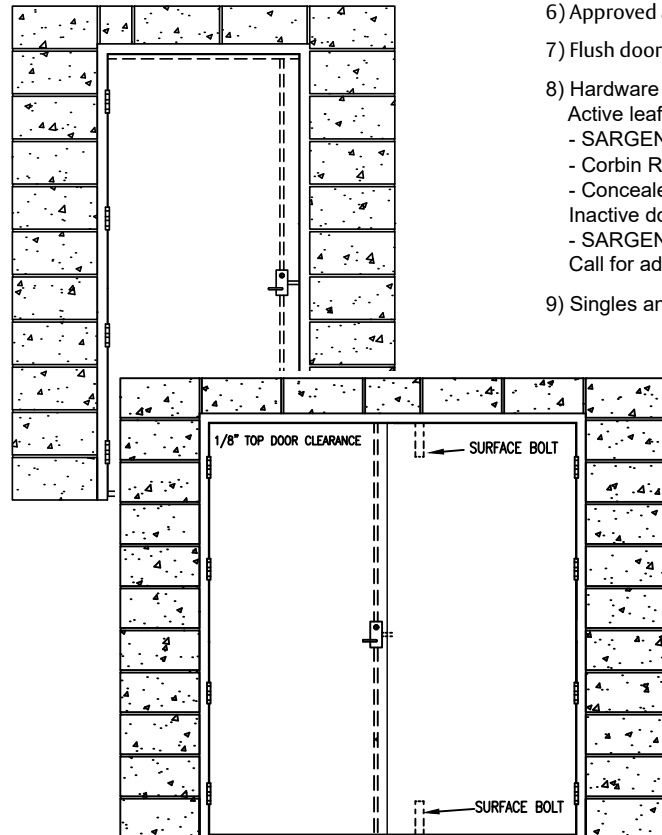
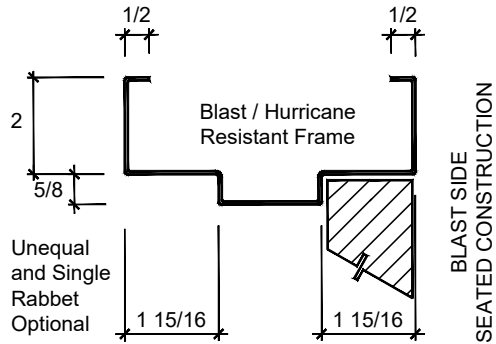


# Blast and Hurricane Resistant Assembly



## SPECIFICATIONS:

- All exposed surfaces of door and frame to receive one coat of rust inhibitive prime paint
- Opening sizes single: Min. 2'8" x 6'8", Max. 4'0" x 8'0", pair: Min. 5'4" x 6'8", Max. 8'0" x 8'0"
- Single Opening - +/-150 psf and 50 fps
  - Blast Up To 6.16 psi Category I (12 gauge door and frame construction)
  - Blast Up To 9.74 psi Category II (14 gauge door and frame construction)
 Pair Opening - +/-150 psf and 50 fps
  - Blast Up To 6.84 psi Category II (14 gauge door and frame construction)
- Door thickness is 1-3/4" with 14 gauge face sheets or 12 gauge face sheets depending on what blast psi and category level is required with steel stiffened core
- Frames are constructed of 14 gauge standard and 12 gauge is optional, depending on what blast psi and category level is required. Frames are factory welded with 5-3/4" to 14" jamb depths
- Approved anchor types and spacing must be used
- Flush doors only
- Hardware options (sold separately)
  - Active leaf:
    - SARGENT BL7300 Series multi-point lock
    - Corbin Russwin BL6600 Series multi-point lock
    - Concealed vertical assembly (rods, latches and cassette) factory pre-installed
  - Inactive door:
    - SARGENT 988 or Corbin Russwin 988CR surface bolts
 Call for additional hardware options
- Singles and pairs with optional fire rating up to 3 hours

Blast and Hurricane Resistant Assembly meets UFC 4-010-01 DoD Minimum Anti-terrorism standards and ASTM 2927-12 Response Categories 1 (no damage) and 2 (damaged but operable) following a blast.

UL wind resistant building assemblies and components tested to the following windstorm or severe weather performance standards:

- ASTM E330/E1886/E1996
- TAS201, TAS202, TAS203
- ANSI A250.13

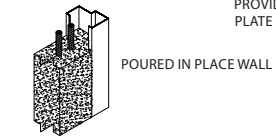
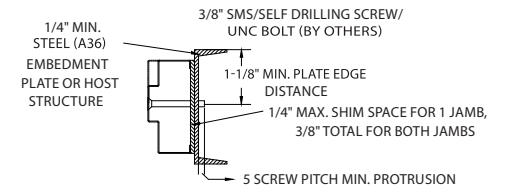
Doors may also be classified as fire doors tested in accordance with UL10B or UL10C. Doors may be fire rated up to and including three hours.

**For blast only requirements, see our blast resistant assembly options.**

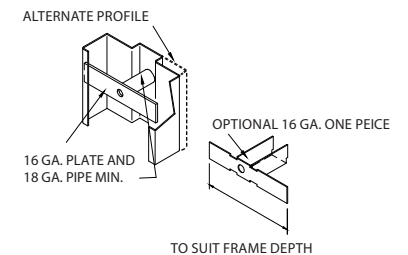
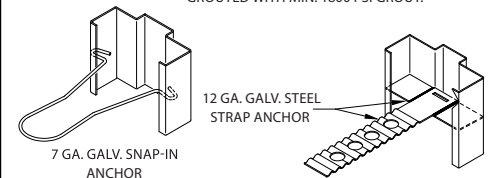
## Anchor Options:

- Masonry T anchors (12 gauge)
- Masonry wire anchors
- Existing opening anchors with 6" bolts supplied by factory
- Welded to building structure
- Poured in place wall
- 3/8" self drilling screws or UNC bolts to embedment plate or host steel structure fasteners by others

Frames are not required to be grouted when using existing wall jamb anchors or when welded to building structure.



MASONRY - WIRE ANCHORS/MASONRY T ANCHORS THE THROAT OF THE FRAME JAMBS MUST BE FULLY GROUTED WITH MIN. 1800 PSI GROUT.



Please contact Specialty Tech Support Team for more information: [specialtyproducts.techsupport@assaabloy.com](mailto:specialtyproducts.techsupport@assaabloy.com)

Experience a safer  
and more open world