

### 8300 Series Exit Device Templates

Template	Function
Metal Door Device Template (Includes 12 Prefix) <a href="#">4310</a>	8304, 8310, 8313, 8315, 8328, 8340, 8343, 8344, 8363, 8373, 8374, 8375, 8376
Wood Door Device Template <a href="#">4709</a>	8304, 8310, 8313, 8315, 8328, 8340, 8343, 8344, 8363, 8373, 8374, 8375, 8376
700 Series ET Trim Template <a href="#">4277</a>	8304, 8310, 8313, 8315, 8340, 8343, 8344
700 Series ET Trim Template <a href="#">4314</a>	8373, 8374, 8375, 8376
FLL Trim Templates <a href="#">4257</a>	8304, 8310, 8328, 8363
FLW Trim Templates <a href="#">4257</a>	8304, 8310, 8328, 8363
MAL Trim Templates <a href="#">4024</a>	8304, 8310, 8328, 8363
PTB Trim Templates <a href="#">4221</a>	8304, 8328, 8363
PTB Trim Templates <a href="#">4222</a>	8310
STS Trim Templates <a href="#">4020</a>	8304, 8310
STS Trim Templates <a href="#">4021</a>	8328, 8363

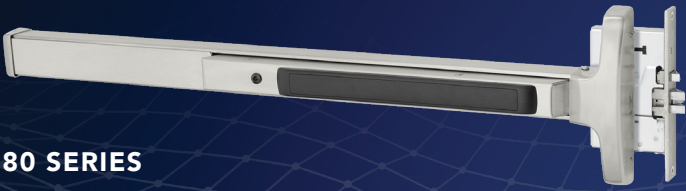
### Options

Template	Prefix
See above	12
Consult Technical Product Services	31
<a href="#">4568</a>	53, 55, 56, 58, 59, AL
<a href="#">4314</a>	54

### Options

Template	Strike
<a href="#">4192</a>	815
<a href="#">3908</a>	908, C908

Thermal Pin Template  
[4617](#)



**8300 Series Exit Device Installation Instructions**

Installation Name & Doc#	Installation Category	Installation Notes
Main Device Installation <a href="#">Doc# A6696</a>	Device/Trim Related Instructions	Standard and Fire Rated (12-) Included
Through Bolt (TB) Installation <a href="#">Doc# A6257</a>	Device/Trim Related Instructions	Standard and Fire Rated (12-) Included
700 Series ET Trim Installation <a href="#">Doc# A6374</a>	Device/Trim Related Instructions	Standard Trims Functions: 04, 06, 10, 13, 15, 73, 74, 75, 76
700 Series ET Trim Installation <a href="#">Doc# A7261</a>	Device/Trim Related Instructions	Freewheeling Trims Functions: 40, 43, 44, 46
54- Lever Monitor & Electrified Trim Installation <a href="#">Doc# A7725</a>	Device/Trim Related Instructions	773, 774, 775, 776 & 54- lever wiring
862/863/864 Pull Installation <a href="#">Doc# A7474</a>	Device/Trim Related Instructions	
16- and 816 Kit Installation <a href="#">Doc# A6848</a>	Accessory Related Instructions	
668 Glass Bead Shim Kit Installation <a href="#">Doc# A7955</a>	Accessory Related Instructions	For narrow stile devices
43- Flush End Cap Installation <a href="#">Doc# A7581</a>	Accessory Related Instructions	
565/665 End Cap Installation <a href="#">Doc# A6924</a>	Accessory Related Instructions	
541 Security Shim kit Installation <a href="#">Doc# A8008</a>	Accessory Related Instructions	
AL Alarm Installation <a href="#">Doc# A7224</a>	Electrical Related Instructions	
55- Signal Switch Installation <a href="#">Doc# A6808</a>	Electrical Related Instructions	
855 Signal Switch Kit Installation <a href="#">Doc# A7110</a>	Electrical Related Instructions	To retrofit 55- Request to exit Signal Switch into an 80 series rail
53- Latchbolt Monitoring Installation <a href="#">Doc# A7678</a>	Electrical Related Instructions	
58- Electric Dogging Installation <a href="#">Doc# A6835</a>	Electrical Related Instructions	
59- Delayed Egress Installation <a href="#">Doc# A7690</a>	Electrical Related Instructions	
56- ELR Installation <a href="#">Doc# A7925</a>	Electrical Related Instructions	
R56/M56 Electric Latch Retraction Kit Installation <a href="#">Doc# A7926</a>	Electrical Related Instructions	
55-56 Kit Installation <a href="#">Doc# A6912</a>	Electrical Related Instructions	



### 8400 Series Exit Device Templates

Template	Function
Aluminum Door (AD Prefix) Device Template <a href="#">4312</a>	8406, 8410, 8413, 8415, 8440, 8443, 8446, 8473, 8474
Metal Door (MD Prefix) Device Template (Includes 12 Prefix) <a href="#">4447</a>	8406, 8410, 8413, 8415, 8440, 8443, 8446, 8473, 8474
700 ET Trim Template <a href="#">4448</a>	8406, 8410, 8413, 8415, 8440, 8443, 8446,
700 ET Trim Template <a href="#">4467</a>	8473, 8474
862, 863, 864 Trim Template Field Prep	8410
P106/P113 Auxiliary Control Template <a href="#">4212</a>	8410

### Options

Template	Prefix
See above	12
Consult Technical Product Services	31
<a href="#">4568</a>	53, 55, 56, 58, 59, AL
<a href="#">4467</a>	54
<a href="#">4312</a> , ref note 9	NB

Template	Strike
<a href="#">4449</a>	606, 650, 652
<a href="#">4649</a>	640
<a href="#">4386</a>	881



## 8400 Series Exit Device Installation Instructions

Installation Name & Doc#	Installation Category	Installation Notes
700 Series ET Trim Installation <a href="#">Doc# A6374</a>	Device/Trim Related Instructions	Standard Trims Functions: 04, 06, 10, 13, 15, 73, 74, 75, 76
700 Series ET Trim Installation <a href="#">Doc# A7261</a>	Device/Trim Related Instructions	Freewheeling Trims Functions: 40, 43, 44, 46
106/113 Aux Control Installation <a href="#">Doc# A5985</a>	Device/Trim Related Instructions	
54- Lever Monitor & Electrified Trim Installation <a href="#">Doc# A7725</a>	Device/Trim Related Instructions	773, 774, 775, 776 & 54- lever wiring
862/863/864 Pull Installation <a href="#">Doc# A7474</a>	Device/Trim Related Instructions	
16- and 816 Kit Installation <a href="#">Doc# A6848</a>	Accessory Related Instructions	
668 Glass Bead Shim Kit Installation <a href="#">Doc# A7955</a>	Accessory Related Instructions	For narrow stile devices
43- Flush End Cap Installation <a href="#">Doc# A7581</a>	Accessory Related Instructions	
565/665 End Cap Installation <a href="#">Doc# A6924</a>	Accessory Related Instructions	
541 Security Shim kit Installation <a href="#">Doc# A8008</a>	Accessory Related Instructions	
AL Alarm Installation <a href="#">Doc# A7224</a>	Electrical Related Instructions	
55- Signal Switch Installation <a href="#">Doc# A6808</a>	Electrical Related Instructions	
855 Signal Switch Kit Installation <a href="#">Doc# A7110</a>	Electrical Related Instructions	To retrofit 55- Request to exit Signal Switch into an 80 series rail
53- Latchbolt Monitoring Installation <a href="#">Doc# A7678</a>	Electrical Related Instructions	
58- Electric Dogging Installation <a href="#">Doc# A6835</a>	Electrical Related Instructions	
59- Delayed Egress Installation <a href="#">Doc# A7690</a>	Electrical Related Instructions	
56- ELR Installation <a href="#">Doc# A7925</a>	Electrical Related Instructions	
R56/M56 Electric Latch Retraction Kit Installation <a href="#">Doc# A7926</a>	Electrical Related Instructions	
55-56 Kit Installation <a href="#">Doc# A6912</a>	Electrical Related Instructions	



### 8500 Series Exit Device Templates

Template	Function
8500 Device Template <a href="#">4307</a>	8504, 8510
8500 Device Template <a href="#">4645</a>	8506, 8510, 8513, 8515, 8540, 8543, 8544, 8546, 8573, 8574
700 ET Trim Template <a href="#">4414</a>	8504, 8504, 8506, 8510, 8510, 8513, 8515, 8540, 8543, 8544, 8546
700 ET Trim Template <a href="#">4530</a>	8573, 8574
862, 863, 864 Trim Template <a href="#">MEDT35</a>	8504
Cylinder Prep <a href="#">4645</a>	8504
700-8 Trim Template <a href="#">4645</a>	P706-8, P713-8, P715-8, P740-8, P743-8, P744-8, P746-8
700-8 Trim Template <a href="#">4529</a>	P773-8, P774-8

### Options

Template	Prefix
See above	12
Consult Technical Product Services	31
<a href="#">4568</a>	53, 55, 56, 58, 59, AL
<a href="#">4529</a>	54

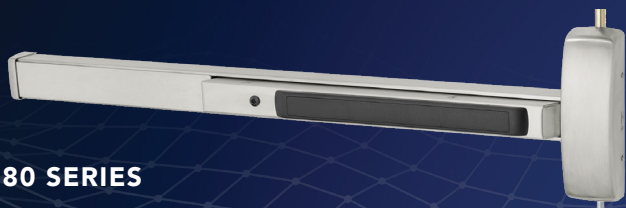
Template	Removeable Mullion
<a href="#">4311</a>	650A

Template	Strike
<a href="#">4308</a>	657
<a href="#">4386</a>	881
<a href="#">3996</a>	644
<a href="#">3995</a>	603, 613
<a href="#">4309</a>	658
<a href="#">4007</a>	632, 642
<a href="#">4004</a>	649
<a href="#">4309</a>	656



**8500 Series Exit Device Installation Instructions**

Installation Name & Doc#	Installation Category	Installation Notes
Main Device Installation <a href="#">Doc# A6699</a>	Device/Trim Related Instructions	Standard and Fire Rated (12-) Included
Through Bolt (TB) Installation <a href="#">Doc# A6257</a>	Device/Trim Related Instructions	Standard and Fire Rated (12-) Included
700 Series ET Trim Installation <a href="#">Doc# A6374</a>	Device/Trim Related Instructions	Standard Trims Functions: 04, 06, 10, 13, 15, 73, 74, 75, 76
700 Series ET Trim Installation <a href="#">Doc# A7261</a>	Device/Trim Related Instructions	Freewheeling Trims Functions: 40, 43, 44, 46
Anti Vandal Trim Installation <a href="#">Doc# A5030</a>	Device/Trim Related Instructions	821, 824, 826, 827 Included
54- Lever Monitor & Electrified Trim Installation <a href="#">Doc# A7725</a>	Device/Trim Related Instructions	773, 774, 775, 776 & 54- lever wiring
862/863/864 Pull Installation <a href="#">Doc# A7474</a>	Device/Trim Related Instructions	
16- and 816 Kit Installation <a href="#">Doc# A6848</a>	Accessory Related Instructions	
668 Glass Bead Shim Kit Installation <a href="#">Doc# A7955</a>	Accessory Related Instructions	For narrow stile devices
43- Flush End Cap Installation <a href="#">Doc# A7581</a>	Accessory Related Instructions	
565/665 End Cap Installation <a href="#">Doc# A6924</a>	Accessory Related Instructions	
541 Security Shim kit Installation <a href="#">Doc# A8008</a>	Accessory Related Instructions	
AL Alarm Installation <a href="#">Doc# A7224</a>	Electrical Related Instructions	
55- Signal Switch Installation <a href="#">Doc# A6808</a>	Electrical Related Instructions	
855 Signal Switch Kit Installation <a href="#">Doc# A7110</a>	Electrical Related Instructions	To retrofit 55- Request to exit Signal Switch into an 80 series rail
53- Latchbolt Monitoring Installation <a href="#">Doc# A7678</a>	Electrical Related Instructions	
58- Electric Dogging Installation <a href="#">Doc# A6835</a>	Electrical Related Instructions	
59- Delayed Egress Installation <a href="#">Doc# A7690</a>	Electrical Related Instructions	
56- ELR Installation <a href="#">Doc# A7925</a>	Electrical Related Instructions	
R56/M56 Electric Latch Retraction Kit Installation <a href="#">Doc# A7926</a>	Electrical Related Instructions	
55-56 Kit Installation <a href="#">Doc# A6912</a>	Electrical Related Instructions	



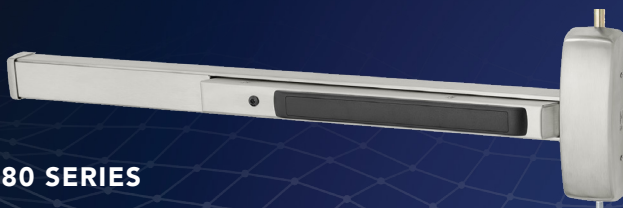
## 8600 Series Exit Device Templates

Template	Function
Aluminum Door (AD Prefix) Device Template <a href="#">4661</a>	8606, 8610, 8613, 8615, 8640, 8643, 8646, 8673, 8674
Metal Door (MD Prefix) Device Template (Includes 12 Prefix) <a href="#">4445</a>	8606, 8610, 8613, 8615, 8640, 8643, 8646, 8673, 8674
Metal Door (NB-MD Prefix) Device Template (Includes 12 Prefix) <a href="#">4566</a>	8606, 8610, 8613, 8615, 8640, 8643, 8646, 8673, 8674
Metal Door (HC-MD Prefix) Device Template (Includes 12 Prefix) <a href="#">4566</a>	8606, 8610, 8613, 8615, 8640, 8643, 8646, 8673, 8674
Wood Door (WD Prefix) Device Template (Includes 12 Prefix) <a href="#">4413</a>	8606, 8610, 8613, 8615, 8640, 8643, 8646, 8673, 8674
Wood Door (NB-WD Prefix) Device Template (Includes 12 Prefix) <a href="#">4565</a>	8606, 8610, 8613, 8615, 8640, 8643, 8646, 8673, 8674
700 ET Trim Template <a href="#">4448</a>	8606, 8613, 8615, 8643, 8646
700 ET Trim Template <a href="#">4436</a>	8610, 8640
700 ET Trim Template <a href="#">4467</a>	8673, 8674
862, 863, 864 Trim Template Field Prep	8610
P106/P113 Auxiliary Control Template <a href="#">4212</a>	8610
SN200, SN210 Reader Controller <a href="#">4704</a>	8673, 8674

## Options

Template	Prefix
See above	12
Consult Technical Product Services	31
<a href="#">4569</a>	53, 55, 56, 58, AL
<a href="#">4467</a>	54
<a href="#">4455</a>	59
(See above)	NB

Template	Strike
<a href="#">4449</a>	606, 650, 652
<a href="#">4649</a>	640
<a href="#">4386</a>	881



**8600 Series Exit Device Installation Instructions**

Installation Name & Doc#	Installation Category	Installation Notes
Wood Door Installation <a href="#">Doc# A3937</a>	Device/Trim Related Instructions	Standard and Fire Rated (12-) Included
Metal Door Installation <a href="#">Doc# A7002</a>	Device/Trim Related Instructions	Hollow Metal and Aluminum
Through Bolt (TB) Installation <a href="#">Doc# A6257</a>	Device/Trim Related Instructions	Standard and Fire Rated (12-) Included
700 Series ET Trim Installation <a href="#">Doc# A6374</a>	Device/Trim Related Instructions	Standard Trims Functions: 04, 06, 10, 13, 15, 73, 74, 75, 76
700 Series ET Trim Installation <a href="#">Doc# A7261</a>	Device/Trim Related Instructions	Freewheeling Trims Functions: 40, 43, 44, 46
54- Lever Monitor & Electrified Trim Installation <a href="#">Doc# A7725</a>	Device/Trim Related Instructions	773, 774, 775, 776 & 54- lever wiring
862/863/864 Pull Installation <a href="#">Doc# A7474</a>	Device/Trim Related Instructions	
106/113 Aux Control Installation <a href="#">Doc# A5985</a>	Device/Trim Related Instructions	
16- and 816 Kit Installation <a href="#">Doc# A6848</a>	Accessory Related Instructions	
Glass Bead Shim Kit Installation <a href="#">Doc# A6710</a>	Accessory Related Instructions	537, 587, 589 Shim kits
43- Flush End Cap Installation <a href="#">Doc# A7581</a>	Accessory Related Instructions	
565/665 End Cap Installation <a href="#">Doc# A6924</a>	Accessory Related Instructions	
541 Security Shim kit Installation <a href="#">Doc# A8008</a>	Accessory Related Instructions	
AL Alarm Installation <a href="#">Doc# A7224</a>	Electrical Related Instructions	
55- Signal Switch Installation <a href="#">Doc# A6808</a>	Electrical Related Instructions	
855 Signal Switch Kit Installation <a href="#">Doc# A7110</a>	Electrical Related Instructions	To retrofit 55- Request to exit Signal Switch into an 80 series rail
53- Latchbolt Monitoring Installation <a href="#">Doc# A7678</a>	Electrical Related Instructions	
58- Electric Dogging Installation <a href="#">Doc# A6835</a>	Electrical Related Instructions	
59- Delayed Egress Installation <a href="#">Doc# A7690</a>	Electrical Related Instructions	
56- ELR Installation <a href="#">Doc# A7925</a>	Electrical Related Instructions	
R56/M56 Electric Latch Retraction Kit Installation <a href="#">Doc# A7926</a>	Electrical Related Instructions	
55-56 Kit Installation <a href="#">Doc# A6912</a>	Electrical Related Instructions	



## 8700 Series Exit Device Templates

Template	Function
8700 Device Template <a href="#">4289</a>	8706, 8710, 8713, 8715, 8728, 8740, 8743, 8746, 8762, 8763, 8773, 8774
12- Prefix 8700 Device Template <a href="#">4297</a>	PE8706, PE8710, PE8713, PE8715, PE8728, PE8740, PE8743, PE8746, PE8762, PE8763, PE8773, PE8774, PE8778
Metal & Wood Door Device Template (Includes NB & 12 Prefix) <a href="#">MEDT13</a>	8706, 8710, 8710, 8713, 8715, 8728, 8740, 8743, 8746, 8762, 8763, 8773, 8774
NB-8700 Device Template (Includes 12- Prefix) <i>Old Template for devices ordered prior to 04/14/25</i> <a href="#">4559</a>	8706, 8710, 8713, 8715, 8728, 8740, 8743, 8746, 8762, 8763, 8773, 8774
Metal Door (FM & HC, HC4 Prefix) Device Template (Includes 12 Prefix) <a href="#">4462</a>	8706, 8710, 8713, 8740, 8746, 8773, 8774
700 ET Trim Template <a href="#">4277</a>	8706, 8710, 8713, 8715, 8740, 8743, 8746
FLL/FLW Trim Template <a href="#">4257</a>	8706, 8713, 8728, 8762, 8763
MAL Trim Template <a href="#">4024</a>	8706, 8713, 8728, 8762, 8763
PTB Trim Template <a href="#">4222</a>	8706, 8713
PTB Trim Template <a href="#">4220</a>	8728, 8762, 8763
STS Trim Template <a href="#">4021</a>	8706, 8713, 8728, 8762, 8763
862, 863, 864 Trim Template Field Prep	8710
Auxiliary Control Template <a href="#">4214</a>	306, 313
SN200, SN210 Reader Controller for (12-) 8700 <a href="#">4705</a>	8773, 8774

## Options

Template	Prefix
See above	12
Consult Technical Product Services	31
<a href="#">4569</a>	53, 55, 56, 58, 59, AL
<a href="#">4314</a>	54
(See above)	NB

Template	Strike
<a href="#">4009</a>	624
<a href="#">4004 / 4413</a>	646
<a href="#">4225</a>	648
<a href="#">4413 / 4296</a>	653
<a href="#">4296</a>	654
<a href="#">4004 / 4413 / 4296</a>	655
<a href="#">4296</a>	659
<a href="#">4387</a>	881

Template	Trim
<a href="#">4414</a>	704, 706-8, 710, 713, 715, 740, 743, 744, 746, 773, 774
<a href="#">4529</a>	(54-) 773, (54-) 774



**8700 Series Exit Device Installation Instructions**

Installation Name & Doc#	Installation Category	Installation Notes
Main Device Installation <a href="#">Doc# A6701</a>	Device/Trim Related Instructions	Standard, Fire Rated (12-), Hurricane Rated (HC/HC4) Included
FM8700 Installation <a href="#">Doc# A7827</a>	Device/Trim Related Instructions	Fire Rated (12-) Included
Through Bolt (TB) Installation <a href="#">Doc# A6257</a>	Device/Trim Related Instructions	Standard and Fire Rated (12-) Included
700 Series ET Trim Installation <a href="#">Doc# A6374</a>	Device/Trim Related Instructions	Standard Trims Functions: 04, 06, 10, 13, 15, 73, 74, 75, 76
700 Series ET Trim Installation <a href="#">Doc# A7261</a>	Device/Trim Related Instructions	Freewheeling Trims Functions: 40, 43, 44, 46
54- Lever Monitor & Electrified Trim Installation <a href="#">Doc# A7725</a>	Device/Trim Related Instructions	773, 774, 775, 776 & 54- lever wiring
306/313 Auxiliary Control Installation <a href="#">Doc# A5978</a>	Device/Trim Related Instructions	
862/863/864 Pull Installation <a href="#">Doc# A7474</a>	Device/Trim Related Instructions	
16- and 816 Kit Installation <a href="#">Doc# A6848</a>	Accessory Related Instructions	
Glass Bead Shim Kit Installation <a href="#">Doc# A6710</a>	Accessory Related Instructions	537, 587, 589 Shim kits
43- Flush End Cap Installation <a href="#">Doc# A7581</a>	Accessory Related Instructions	
565/665 End Cap Installation <a href="#">Doc# A6924</a>	Accessory Related Instructions	
541 Security Shim kit Installation <a href="#">Doc# A8008</a>	Accessory Related Instructions	
AL Alarm Installation <a href="#">Doc# A7224</a>	Electrical Related Instructions	
55- Signal Switch Installation <a href="#">Doc# A6808</a>	Electrical Related Instructions	
855 Signal Switch Kit Installation <a href="#">Doc# A7110</a>	Electrical Related Instructions	To retrofit 55- Request to exit Signal Switch into an 80 series rail
53- Latchbolt Monitoring Installation <a href="#">Doc# A7678</a>	Electrical Related Instructions	
58- Electric Dogging Installation <a href="#">Doc# A6835</a>	Electrical Related Instructions	
59- Delayed Egress Installation <a href="#">Doc# A7690</a>	Electrical Related Instructions	
56- ELR Installation <a href="#">Doc# A7925</a>	Electrical Related Instructions	
R56/M56 Electric Latch Retraction Kit Installation <a href="#">Doc# A7926</a>	Electrical Related Instructions	
55-56 Kit Installation <a href="#">Doc# A6912</a>	Electrical Related Instructions	



**8800 Series Exit Device Templates**

Template	Function
8800 Device Template (Includes 12-, WS, 12-WS Prefixes) <a href="#">4415</a>	8888, 8804, 8806, 8810, 8813, 8815, 8840, 8843, 8844, 8846, 8873, 8874, 8875, 8876, 8877, 8878
8800 Device Template (Includes 12-, WS, 12-WS Prefixes) <a href="#">4285</a>	8816, 8828, 8863, 8866
8800 Device Template (Includes 12-, WS, 12-WS Prefixes) <a href="#">4286</a>	8893
8800 Device Template (Includes 12-, WS, 12-WS Prefixes) <a href="#">4466</a>	8895
HC-8800 Device Template (Includes 12- Prefix) <a href="#">4465</a>	8804, 8810, 8840, 8844
HC-8800 Device Template (Includes 12- Prefix) <a href="#">4463</a>	8806, 8813, 8815, 8843, 8846
700 ET Trim Template (Excludes HC-8800 Devices) <a href="#">4277</a>	8873, 8874, 8875, 8876
FLL / FLW Trim Template <a href="#">4257</a>	8804, 8810, 8828, 8863, 8866
FSL/FSW/PSB Trim Template <a href="#">4546</a>	8804
MAL Trim Template 4224	8828, 8863, 8866
PTB Trim Template <a href="#">4220</a>	8828, 8863, 8866
STS Trim Template <a href="#">4021</a>	8828, 8863, 8866
821, 826 Anti- Vandal Trim <a href="#">4554</a>	8804
862, 863, 864 Trim Template <a href="#">4307</a>	8804
SN200, SN210 Reader Controller <a href="#">4707</a>	8873, 8874, 8875, 8876
IN100, IN120, IN220 Reader Controller <a href="#">4716</a>	8877, 8878

**Options**

Template	Prefix
See above	12
Consult Technical Product Services	31
<a href="#">4569</a>	53, 55, 56, 58, 59, AL
<a href="#">4530</a>	54
<a href="#">4474</a>	KP

Template	Strike
<a href="#">3995</a>	603,613
<a href="#">4007</a>	632, 642
<a href="#">3996</a>	644
<a href="#">4004</a>	649
4417	656
<a href="#">4308</a>	657
<a href="#">4309</a>	658
<a href="#">4386</a>	881

Template	Removable Mullion
<a href="#">MEDT78</a>	650A
<a href="#">4715</a>	980/L980, 980A/L980A, 12- 980/12-L980, EL980
<a href="#">MEDT39</a>	HD/HC/HCL980 (includes 12-), SM980/SML980
<a href="#">4206</a>	SMEL980

Template	Trim
<a href="#">4414</a>	706-8, 713-8, 715-8, 740-8, 743-8, 744-8, 746-8
<a href="#">4530</a>	(54-) 773-8, (54-) 774-8, (54-) 775-8, (54-) 776-8



**8800 Series Exit Device Installation Instructions**

Installation Name & Doc#	Installation Category	Installation Notes
Main Device Installation <a href="#">Doc# A6770</a>	Device/Trim Related Instructions	Standard, Fire Rated (12-), Windstorm Rated (WS), Hurricane Rated (HC) Included For all functions EXCEPT 16, 28, 63, 66
Main Device Installation <a href="#">Doc# A6703</a>	Device/Trim Related Instructions	Standard, Fire Rated (12-), Windstorm Rated (WS), Hurricane Rated (HC) Included ONLY for functions: 16, 28, 63, 66
Through Bolt (TB) Installation <a href="#">Doc# A6257</a>	Device/Trim Related Instructions	Standard and Fire Rated (12-) Included
814 Pull Trim installation <a href="#">Doc# A5025</a>	Device/Trim Related Instructions	814-FSL, 814-MSL, 814-PSB, 814-FSW For use on 8804 ONLY
700 Series ET Trim Installation <a href="#">Doc# A6374</a>	Device/Trim Related Instructions	Standard Trims Functions: 04, 06, 10, 13, 15, 73, 74, 75, 76
700 Series ET Trim Installation <a href="#">Doc# A7261</a>	Device/Trim Related Instructions	Freewheeling Trims Functions: 40, 43, 44, 46
54- Lever Monitor & Electrified Trim Installation <a href="#">Doc# A7725</a>	Device/Trim Related Instructions	773, 774, 775, 776 & 54- lever wiring
862/863/864 Pull Installation <a href="#">Doc# A7474</a>	Device/Trim Related Instructions	
16- and 816 Kit Installation <a href="#">Doc# A6848</a>	Accessory Related Instructions	
Glass Bead Shim Kit Installation <a href="#">Doc# A6710</a>	Accessory Related Instructions	537, 587, 589 Shim kits
43- Flush End Cap Installation <a href="#">Doc# A7581</a>	Accessory Related Instructions	
565/665 End Cap Installation <a href="#">Doc# A6924</a>	Accessory Related Instructions	
541 Security Shim kit Installation <a href="#">Doc# A8008</a>	Accessory Related Instructions	
AL Alarm Installation <a href="#">Doc# A7224</a>	Electrical Related Instructions	
55- Signal Switch Installation <a href="#">Doc# A6808</a>	Electrical Related Instructions	
855 Signal Switch Kit Installation <a href="#">Doc# A7110</a>	Electrical Related Instructions	To retrofit 55- Request to exit Signal Switch into an 80 series rail
53- Latchbolt Monitoring Installation <a href="#">Doc# A7678</a>	Electrical Related Instructions	
58- Electric Dogging Installation <a href="#">Doc# A6835</a>	Electrical Related Instructions	
59- Delayed Egress Installation <a href="#">Doc# A7690</a>	Electrical Related Instructions	
56- ELR Installation <a href="#">Doc# A7925</a>	Electrical Related Instructions	
R56/M56 Electric Latch Retraction Kit Installation <a href="#">Doc# A7926</a>	Electrical Related Instructions	
55-56 Kit Installation <a href="#">Doc# A6912</a>	Electrical Related Instructions	



**8900 Series Exit Device Templates**

Template	Function
8900 Device Template (Includes 12-,WS, 12-WS Prefixes) <a href="#">4709</a>	8904, 8906, 8910, 8913, 8915, 8916, 8928, 8940, 8943, 8944, 8946, 8963, 8966, 8973, 8974, 8975, 8976, 8977, 8978
Wood Door Device Template <a href="#">4290</a>	8904, 8906, 8910, 8913, 8915, 8916, 8928, 8940, 8943, 8944, 8946, 8963, 8966, 8973, 8974, 8975, 8976, 8977, 8978
700 ET Trim Template <a href="#">4277</a>	8904, 8906, 8910, 8913, 8915, 8916, 8940, 8943, 8944, 8946
700 ET Trim Template <a href="#">4314</a>	8973, 8974, 8975, 8976
FLL / FLW Trim Template <a href="#">4257</a>	8904, 8910, 8928, 8963, 8966
MAL Trim Template <a href="#">4024</a>	8904, 8910, 8928, 8963, 8966
PTB Trim Template <a href="#">4020</a>	8963, 8966
PTB Trim Template <a href="#">4220</a>	8928
PTB Trim Template <a href="#">4221</a>	8904
PTB Trim Template <a href="#">4222</a>	8910
STS Trim Template <a href="#">4020</a>	8904, 8910,
STS Trim Template <a href="#">4021</a>	8928, 8963, 8966
Anti-Vandal Trim <a href="#">4554</a>	8904, 8910
SN200, SN210 Reader Controller <a href="#">4708</a>	8973, 8974, 8975, 8976
IN100, IN120, IN220 Reader Controller <a href="#">4717</a>	8977, 8978

**Options**

Template	Prefix
<a href="#">MEDT42</a>	12
Consult Technical Product Services	31
<a href="#">4569</a>	53, 55, 56, 58, 59, AL
<a href="#">4314</a>	54
<a href="#">4477</a>	KP

Template	Strike
<a href="#">4192</a>	815
<a href="#">3908</a>	908, C908

<a href="#">4617</a>	Thermal Pin Template
----------------------	----------------------



**8900 Series Exit Device Installation Instructions**

Installation Name & Doc#	Installation Category	Installation Notes
Main Device Installation <a href="#">Doc# A6705</a>	Device/Trim Related Instructions	Standard, Fire Rated (12-), Windstorm Rated (WS) Included For all functions
Through Bolt (TB) Installation <a href="#">Doc# A6257</a>	Device/Trim Related Instructions	Standard and Fire Rated (12-) Included
700 Series ET Trim Installation <a href="#">Doc# A6374</a>	Device/Trim Related Instructions	Standard Trims Functions: 04, 06, 10, 13, 15, 73, 74, 75, 76
700 Series ET Trim Installation <a href="#">Doc# A7261</a>	Device/Trim Related Instructions	Freewheeling Trims Functions: 40, 43, 44, 46
54- Lever Monitor & Electrified Trim Installation <a href="#">Doc# A7725</a>	Device/Trim Related Instructions	773, 774, 775, 776 & 54- lever wiring
862/863/864 Pull Installation <a href="#">Doc# A7474</a>	Device/Trim Related Instructions	
16- and 816 Kit Installation <a href="#">Doc# A6848</a>	Accessory Related Instructions	
Glass Bead Shim Kit Installation <a href="#">Doc# A6710</a>	Accessory Related Instructions	537, 587, 589 Shim kits
43- Flush End Cap Installation <a href="#">Doc# A7581</a>	Accessory Related Instructions	
565/665 End Cap Installation <a href="#">Doc# A6924</a>	Accessory Related Instructions	
541 Security Shim kit Installation <a href="#">Doc# A8008</a>	Accessory Related Instructions	
AL Alarm Installation <a href="#">Doc# A7224</a>	Electrical Related Instructions	
55- Signal Switch Installation <a href="#">Doc# A6808</a>	Electrical Related Instructions	
855 Signal Switch Kit Installation <a href="#">Doc# A7110</a>	Electrical Related Instructions	To retrofit 55- Request to exit Signal Switch into an 80 series rail
53- Latchbolt Monitoring Installation <a href="#">Doc# A7678</a>	Electrical Related Instructions	
58- Electric Dogging Installation <a href="#">Doc# A6835</a>	Electrical Related Instructions	
59- Delayed Egress Installation <a href="#">Doc# A7690</a>	Electrical Related Instructions	
56- ELR Installation <a href="#">Doc# A7925</a>	Electrical Related Instructions	
R56/M56 Electric Latch Retraction Kit Installation <a href="#">Doc# A7926</a>	Electrical Related Instructions	
55-56 Kit Installation <a href="#">Doc# A6912</a>	Electrical Related Instructions	