



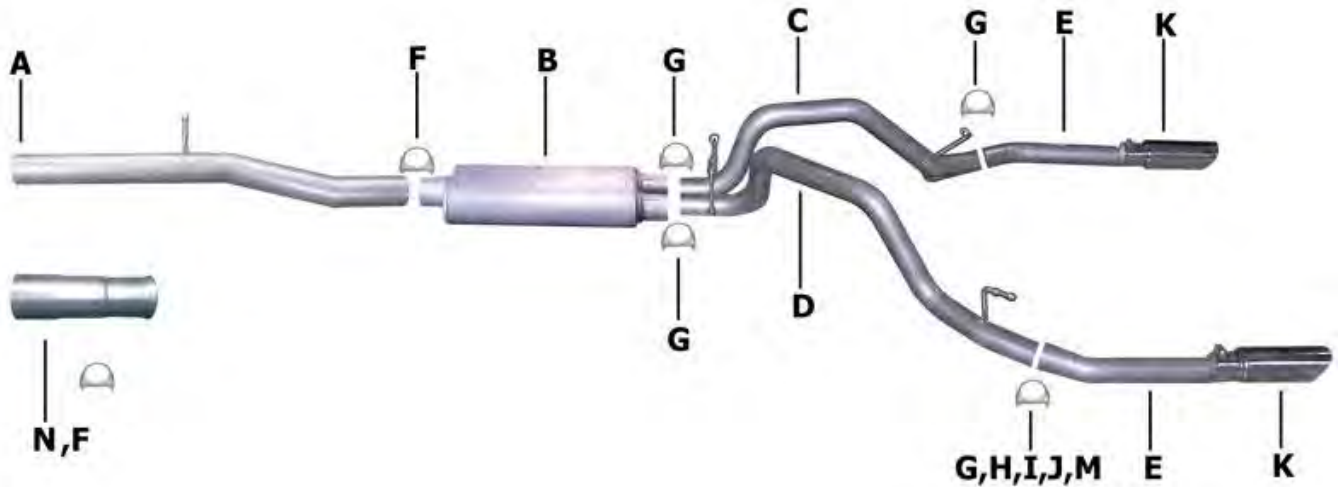
Installation Instructions

Cat-Back Split Rear Exhaust

Chevy Silverado / GMC Sierra 1500 Truck
 Crew Cab, Short Bed, 4.8L-5.3L-6.0L 2/4wd
 Extended Cab, Standard Bed, 4.8L-5.3L 2/4wd

*** Designed specifically for vehicles equipped with Active Fuel Management ***

Part #5636



ITEM	PART	QUANTITY	DESCRIPTION
A	701117	1	3" Headpipe
B	11235	1	Superflow CFT Muffler
C	700986	1	2.25" Passenger Side Over Axle Tailpipe
D	700987	1	2.25" Driver Side Over Axle Tailpipe
E	700988	2	2.25" Exit Pipe
F	OHD300	2	3" Clamp
G	5756	4	2.25" Clamp
H	4342	1	Driver Side Rear Hanger
I	BO-101	1	Bolt Kit for Hanger
J	4240	1	Rubber Grommet
K	500395	2	3.5" Stainless Tips
L	ZIP	2	Zip Ties
M	S103	1	Tab
N	701092	1	3" Adapter

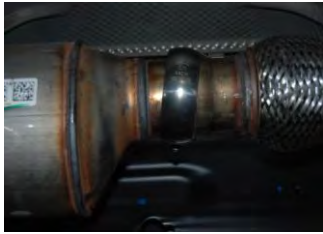
Thank you for purchasing our Gibson Exhaust System for your vehicle.
 If you need further assistance, please do not hesitate to call our technical department at
 (800) 528 -3044 Monday through Friday, 8am to 5 pm. 04/11

Installation Instructions #5636

When installing this exhaust system make sure to use proper safety precautions. Use jack stands when working under the vehicle, set parking brake, block tires and use safety glasses and gloves. Allow exhaust to cool before attempting installation. Severe injury or burns could occur if safety measures are not taken.

SUGGESTED TOOLS: 1/2", 9/16", 15mm wrenches & sockets, WD-40, hacksaw, jack stands

1. Disconnect the negative battery cable before removal of OEM exhaust. This will allow the computer to reset and recognize the new exhaust. Lay out the exhaust on the floor so it looks like the drawing and compare parts with manual.



2. To remove stock exhaust, unclamp it at the ball flange behind the Y-pipe. Make sure to leave all rubber grommets in the factory location. **You will re-use stock clamp.** For easier removal of exhaust, cut behind the muffler. Use WD-40 to remove hangers from grommets.



6. Install driver side tailpipe #D into muffler at least 1.5" to 2". This pipe will route over the axle and between the shock and spare tire. Use clamp #G to secure pipe to muffler. Do not tighten. Insert welded hangers into rubber grommet.



3. Bolt adapter pipe #N to the stock flange re-using the factory clamp.



7. Install passenger side tailpipe #C into muffler at least 1.5" to 2". Use clamp #G to secure pipe to muffler. Do not tighten. The tailpipes will both lean towards the driver side for clearance. Insert welded hangers into rubber grommets.



Next, install headpipe #A into adapter #N. Insert welded grommet. Use clamp #F to secure, do not tighten.



8. Install exit pipes #E onto tailpipes. Cut to your preferred length then use clamps to secure exit pipes to tailpipes. Install stainless steel tips. Clamp down. When you have everything in place, firmly tighten all bolts and clamps down securely. Use stainless steel cleaner and a Scotch Brite pad weekly to prevent tip from discoloration. Inspect all fasteners after 25-50 miles of operation and re-tighten as necessary.



4. Install muffler #B with inlet towards Y-pipe. Use jack stands to support the muffler. Use clamp #F to secure the muffler to headpipe. Do not tighten.



5. Install metal hanger #H into hole located approximately 16" from the rear of the frame. Use hardware kit #I, washer #M, and rubber grommet #J.

GIBSON EXHAUST systems are designed on a factory stock vehicle. Any aftermarket products installed could increase the sound levels of the exhaust.

Make sure there is a 1" clearance from ALL rubber brake lines, shock boots, lines, tires, etc. to prevent heat related damage or fire.