



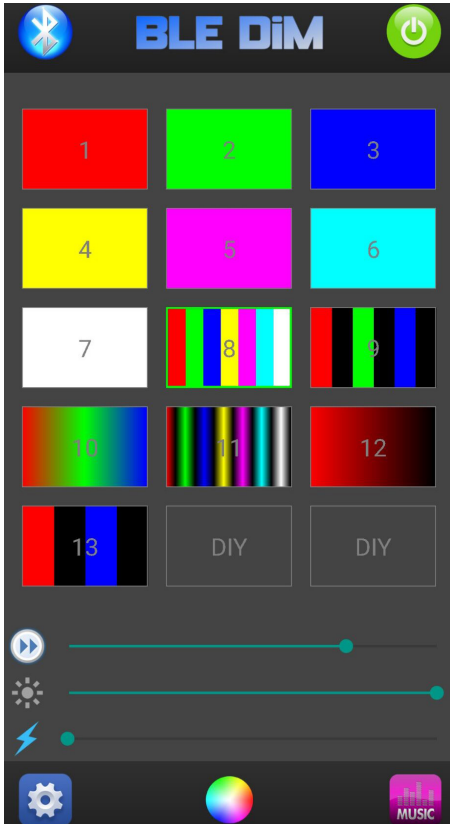
INSTALLATION INSTRUCTIONS

RGB LED ROCK LIGHT KIT

APPLICATION:
Universal

PART NUMBER
W5200

FIGURE 1



BLEDIM APP FOR LED ROCK LIGHTS

1. Download BLEDIM from the IOS or Android App Store.

Scan QR Code to download.



IOS



ANDROID




2. Make sure your manual switch is turned on after connecting your lights to the vehicle.
3. Connect to Bluetooth by clicking the icon in the top left hand corner (**Figure 1**). Click the magnifying glass in the bottom left hand corner to search for your vehicle. Make sure you're standing close enough to the vehicle for the app to connect.
4. Once your connection is successful click the check mark to verify.
5. Click on any of the lights displayed (shown in **Figure 1**) in order to test your rock lights. Each setting is numbered for your convenience. 1-7 are solid and 8-13 are multicolored.
6. Once a color is selected you'll be able to control brightness , flash , and color changing frequency  by sliding your finger (**Figure 3**).
7. If you would like to create custom colors, click on DIY (see **Figure 1**) and a color wheel screen (shown in **Figure 2**) will appear. Next select the color you would like then press the center of the color wheel. You can add multiple colors by repeating this process. If you would like to start over, hit Clear, (**Figure 4**) and then make a new pattern.

FIGURE 2

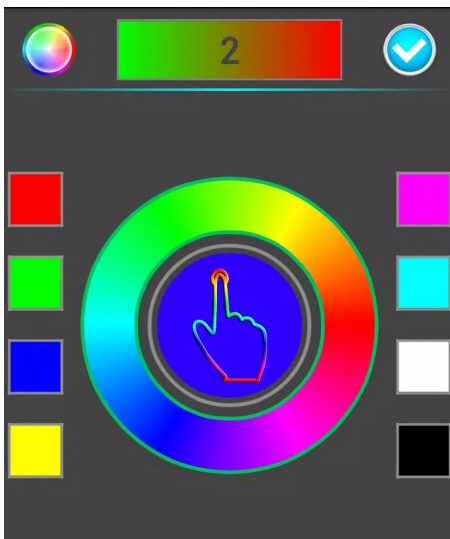


FIGURE 3

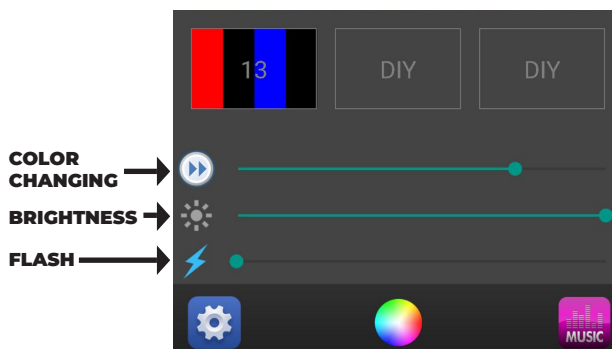
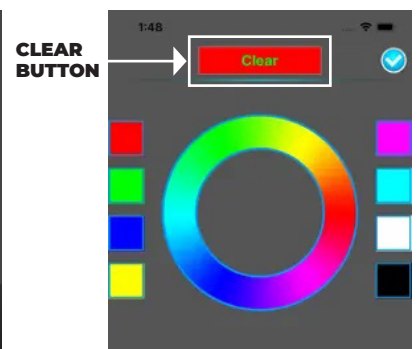


FIGURE 4



ITEM	QUANTITY	DESCRIPTION	TOOLS NEEDED
1	4	Rock Lights	Drill Motor
2	4	Rubber Flat Mount	Screw Driver
3	1	Light Harness	10MM Wrench
4	8	Phillips Pan Head Screw #10	11/64" Drill Bit
5	1	M6 Hex Nut	Transfer Punch
6	1	M6 Flast Washer	
7	10	Zip Ties	

ANTI-SEIZE LUBRICANT MUST BE USED ON ALL STAINLESS STEEL FASTENERS TO PREVENT THREAD DAMAGE AND GALLING

PROCEDURE

1. Remove contents from box, verify if all parts listed are present and free from damage. Carefully read and understand all instructions before attempting installation. Failure to identify damage before installation could lead to a rejection of any claim.
2. Use a transfer punch to mark the proper hole locations then drill pilot holes with an 11/64" drill bit.
3. Using (2) Phillips Pan Head Screws, screw them into the vehicle's frame to secure the rock light along with the flat mount onto the vehicle. It is important to use thread lubricant to prevent the screws from galling.
4. Repeat Steps 2 - 3 for the other (3) rock lights.

WIRING INSTRUCTIONS

CSI ACCESSORIES RECOMMENDS USING A PROFESSIONAL FOR THIS INSTALLATION

1. CAUTION: Disconnect ground connection from battery (-) to avoid accidental short circuits before attempting to connect electrical wires. Refer to wiring diagram shown at the bottom of the page.
2. Secure the relay and grounding link by either drilling or using a pre-existing stud along the chassis.
3. Run the wiring harness through/along the frame rails to the proper locations where the Rock Lights had been previously installed. Connect the Rock Light pig tails to the wiring harness and secure any excess slack in the harness using zip ties.
4. Run the switch harness through the firewall. Note: The switch will need to be removed from the wiring harness so that the rest of the harness can be routed from the engine bay to the cabin.
5. Drill a 3/4" hole, file a small indexing notch and mount the switch in a convenient location. Reconnect the wires to the switch.
6. Re-connect battery terminals, attach the Red (+) wire to battery positive, and the black (-) wire to ground. Turn on the switch to make sure if the light works. If not, please check carefully if the wiring installation is correct.



WIRING INSTRUCTIONS DIAGRAM

