



*2023 DESIGN
EXCELLENCE
AWARDS*

BRAND COLLABORATION

AIMEE KESTENBERG X VENESSA ARIZAGA

AK X VA SONNY CANVAS TOTE

\$248

This collaboration was a universal fit. We connected over our aligned mission to uplift and empower women through the pieces we create. Our brands are kindred spirits sharing a common bond in the balance of city lite and island culture.

The Aimee Kestenberg X Venessa Arizaga Sonny Tote is designed to be the perfect carry-all with multiple ways to wear it and an ability to expand the top. The custom embroidery is a mixture of elements that bring joy to the everyday. From the colorful Sun, Rainbow and Clouds to the peek-a-boo love hearts when you expand the top or the crocheted smiley face & ying yang on the gussets, this piece is one of our favorites. Featuring next level organization and crafted of lightweight recycled eco-friendly canvas - it's the ideal companion for any journey. A nod to self-love.



GLEMAUD X TURA

VG0017 BLK EYEWEAR

\$250

GLEMAUD x TURA is a bold, colorful eyewear collection that especially flatters women with deep and rich skin tones while offering the exclusive “Forever Fit”. The collection marries designer Victor Glemaud’s high fashion boldness and inclusive sizing platform with Tura’s distinct jeweled eyewear heritage. This cat eye style is glamorous with custom laminations and pattern-blocking inspired by Victor Glemaud’s knitwear.



HAMMITT X BEA BONAFINI MR. G

CELESTIAL DAWN BAG

\$595

After their first sold-out collaboration, Hammitt and European artist Bea Bonafini have teamed up on a new limited edition bag, celebrating art, intricacy, and imagination. A celebration of "Celestial Dawn," this collection-worthy satchel is crafted with soft pebbled leather, featuring both printed and laser-cut details inspired by female divers from another world.



PEARLY LUSTRE X SINGAPORE AIRLINES

BATIK EARRINGS

\$198

Experience the allure of the Batik round sphere as it gracefully combines the timeless beauty of Singapore Airlines Batik patterns with the harmonious elegance of round geometry.

Every curve and detail of this remarkable piece represents the seamless connectivity that Singapore Airlines provides, fostering a sense of unity and exploration among individuals worldwide.

Crafted with Sterling Silver 925 with 18k Gold Plated & Genuine Freshwater Pearls.



STUART WEITZMAN X AKNVAS

RUFFLE BOOTIE

\$1,100

Stuart Weitzman and Aknvas' Limited-Edition Fall 2023 Capsule Collection melds SW's iconic footwear designs with Aknvas' Parisian-meets-American sensibility. All styles are crafted by SW artisans in Spain, including the SW X ANKVAS ULTRASTUART RUFFLE BOOTIE, a striking iteration of Stuart Weitzman's world-renowned sock bootie reimaged with Aknvas' signature ruffle details. The collaboration debuted at Aknvas' Fall/Winter 2023 Runway Show at New York Fashion Week and marks Aknvas founder Christian Juul Nielsen's first foray into women's footwear. It also exemplifies the New York City-based legacy brand and emerging brands' shared purpose: To create shoes and clothes that empower women to feel strong and bold.



EYEWEAR OPTICAL

BLAKE KUWAHARA EYEWEAR

THE KELLOGG

\$655

The KELLOGG seamlessly fuses an inner round silhouette with an outer frame that has a handcrafted angular profile creating a deliberate design tension. The combination of dual aesthetics by laminating two completely separate frames using a proprietary process has become a signature for which Blake Kuwahara has quickly become known.



EYEWEAR BY DAVID BECKHAM

DB 7116

\$305

Luxurious 3-piece mount rimless rectangular optical frames in gold metal with crystal acetate temples is high on style and rich in details. A sophisticated metal structure on the endpiece elevated by the brand's Talisman signature detail – inspired by the symbol of wings – is subtly visible between the front and the temples. The screws on the lenses become small metal arrows, fusing practicality and the aesthetics while endpieces that connect to the temples, also in metal, are decorated by a rhombus detail to conceal the flexible hinges.



H HALSTON

2005 021 BLACK

\$199.97

H Halston Eyewear is for fashion-forward women who seek glasses that not only exudes designer elegance but will also stand the test of time. The H Halston 2005 in classic black holds vintage allure due to its oversized plastic frame and Elsa Peretti-esque gold metallic temples fashioned in organic curves for understated glamour. Finished off with contrasting custom temple tips, discrete Halston branding, and spring hinges for the perfect contemporary feel and comfort fit.



NICOLE MILLER

CANNES

\$239.95

Ethereal and edgy, Cannes is light as feather in a translucent acetate, held in place by a metal rim of rose gold with matching temple, that is bisected by horizontally colored lines for sophisticated interest and waterfall tips. For effortless comfort, Cannes features flex hinges allowing a comfortable size for every face.



VOGUE

0VO5527

\$127

An embodiment of elegance, this style boasts invigorating tones, bold profiles and a discreet cat-eye contour. Infused with delicate feminine hues and adorned with textured tactile finishes, it offers a hint of glam to this eye-catching style.

The temples are embossed with a textured floral motif, adding sophisticated glam to this trendy look. Transitioning from delicate pink to understated grey, fresh barely-there colorways are complemented by an elegant metal bar.



EYEWEAR
SUN

CARRERA

FLAGLAB 15

\$225

Bold and daring, this mask is inspired by the world of skiing, with its oversized squared shape in acetate characterized by the distinctive “CARRERA” logo prominently visible on the front and by the C logo plaque on the wide temples. The sunglasses come with special packaging, including a black mask cover to protect the lenses and an elastic cord which can be attached to the temples.



IN SANA

EYE PIECE N.2

\$1,075

The Eye Piece n.2 is part of Phase Armour of IN SANA's second collection. This phase represents an armour that reminds us that we are enough and safe in our fluidity, inviting both self-compassion and the courage to reveal our authentic self. Each piece is a laborious multi-step process of 3D printing in beryllium copper, polishing by hand for hours, welded, galvanized and assembled. Entirely handmade by the designer on order with attention to details.



LANVIN

LLNV664S

\$450

Fashionable and elegant with an edgy twist. This timeless cat-eye sunglass, part of the brand's Melodie concept, features a refined metal embellishment skillfully crafted to wrap the temples. Offered in Classic Black, Ivory and Amber Tortoise.



TIFFANY & CO.

TF4214U

\$465

These sunglasses feature the iconic Tiffany T in a contemporary bold and faceted temple execution blended with an edgy rectangular frame. Everything completed by the iconic Tiffany Blue® front and silver-colored T temple.



TYCHE + ISET EYEWEAR

LABYRINTHE IN BLACKJACK

\$329

The 'Blackjack' titanium eyewear design showcases an enamel checkered temple detailing that is equal parts daring and chic.

Handcrafted in Japan: 'Labyrinthe' is made from Japanese titanium and silky, Mazzucchelli Italian acetate (M49 bio-acetate: a sustainable and recycled source of premium-quality materials).



FASHION JEWELRY

BROSWAY ITALIA

BRACELET CHAKRA 2

\$76

ENGRAVED: Per aspera ad astra | Mysterious, changeable, wonderful (back)
316L stainless steel bracelet, gold finishes with engravings, star-themed
pendants, mother-of-pearl, blue enamel, crystal and montana crystals.



COVET

CHROMATIC COLOR MULTI STONE STATEMENT NECKLACE

\$248

Chromatic Color Multi Stone Statement Necklace. Gold Plating And Color E-Coating Over Brass With CZ Stones.



KARL LAGERFELD PARIS

16" LINK NECKLACE WITH KARL ICONS CHARMS

\$88

Bold statement collar necklace features colorful links and multi-color stones. Hanging mixed media charms in enamel, pearl and metal are fun and iconic, making this the perfect necklace for any Karl Lagerfeld Paris fan.



NADRI

"ROCK STARS" OMBRE BLUE CHANDELIER EARRINGS

\$235

Bold red carpet worthy style combining multiple stone cuts and tonal color in synthetic spinel, glass and cubic zirconia. The finely engineered connections allow for mesmerizing movement and sparkle. Brass with 18K gold plating.



NEVELSON/WIND

LUNAR CONVERTIBLE BRACELET/NECKLACE

\$480

The centerpiece of a new limited edition collaboration by designers Maria Nevelson and John Wind honoring Maria's grandmother, the legendary 20th century sculptor and feminist icon Louise Nevelson, and John's mother, the fierce lady welder and arts advocate Dina Wind. A percentage of all sales from the Nevelson/Wind collection will benefit the Nevelson Foundation and the Dina Wind Art Foundation.

Note: Nevelson/Wind jewelry is produced by long-time Accessories Council member John Wind Jewelry

photo credit: Christopher Tyler Studio



FINE
JEWELRY

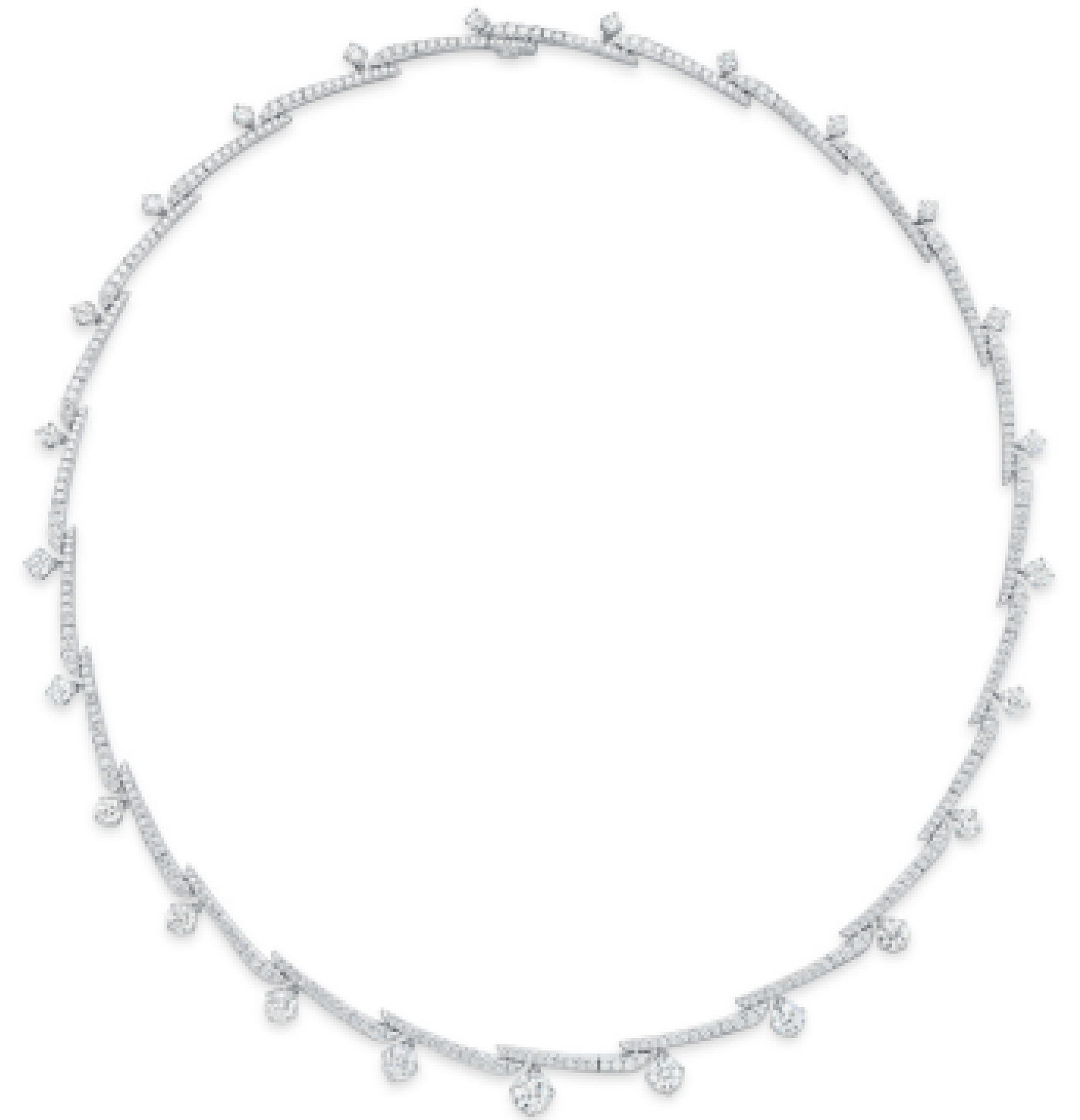
HEARTS ON FIRE

VELA CROSSOVER PAVÉ NECKLACE

\$60,000

Make a statement and stand out in the crowd with our Vela Crossover Pavé Necklace. Sitting beautifully on the décolletage, this piece will elevate any outfit.

This necklace is available in two versions. The 16" is 7.40 ctw with 378 diamonds and the 18" is 8.00 ctw with 423 diamonds.



LAGOS

SMART CAVIAR LUX

\$9,000

LAGOS introduces Smart Caviar Lux, an 18K gold and sterling silver bracelet that transforms your Apple Watch into a piece of fine jewelry. The textured gold Caviar beading against the bright diamonds and smooth sterling silver, highlight the brand's expert craftsmanship and design. It's perfect for the woman who doesn't want to sacrifice style to stay connected.



MARTHA SEELY DESIGN

STARDUST DANGLE EARRINGS

\$4,775

Long and sparkling - articulating earrings. 3.11" L x .55" W.
They are made with 5.8ct Tanzanites; 3.2ct Sapphires; 1.35ct Diamonds.
Definitely NOT only for dress up!!!



MASON AND BOOKS JEWELRY

NAUTILUS RING

\$10,500

The nautilus ring is a symbol of nature's grace in growth, expansion, and renewal. It is also a symbol of order amidst chaos as reflected in its spiral precision. In this design Jamie Books uses her signature restraint in interpreting a classic motif.

Showing in 4.25tcw AAA tanzanite and .12tcw diamonds

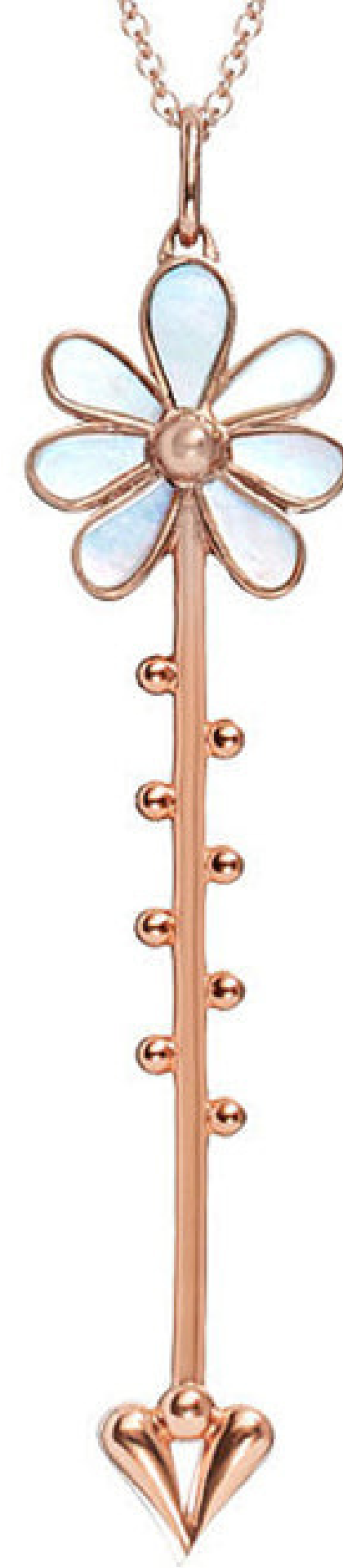


ROSEATE

BLOOM WAND

\$1,900

Roseate Wands are personal amulets—symbols of self-discovery that connect you to Earth and oceans, humanity, and your inner strength. The Bloom Wand is a slender scepter topped with a mother-of-pearl blossom and punctuated by a heart. Wear it to inspire growth and rejuvenation—of the body, mind and heart.



FOOTWEAR
OVER \$250

ALEXIS ISABEL

FRANKIE RAINBOW MULES

\$395

Inspired by the Doña Aurora flower, the Frankie Rainbow Mules are made with metallic fuchsia leather and gold lacquered heels. Each pair features handmade satin rainbow bursts topped off with a brilliant crystal.



ALLEN EDMONDS

RANDOLPH BIT CROCO LOAFER

\$795

Sleek, slip-on dress loafer with metal hardware bit, made on Goodyear-welted construction with re-crafting capabilities. Ultra-refined upper made of European calfskin leather and genuine, sustainably-raised Nile Crocodile.



CHRIS DONOVAN FOOTWEAR

ALPHA

\$895

Alpha is a bootie in calf and handmade in Italy. The heel was inspired by lathe-turned balusters and the upper was created to match the sculptural quality of the heel.



ENRICO CUINI

SINDERELLA

\$1,600

Sinderella is our go with everything sandal perfect for every princess. You can walk anywhere in our shoes with our patented A.L.I.A technology to relieve pressure and increase balance.



VERONICA BEARD

VESPER TALL SHAFT BOOT WIDE CALF

\$695

New contoured calf upper pattern for best in class Perfect Fit, Regular and Wide Calf fit options. 100% Working Group leather uppers, linings and outsoles, recycled content in toe box, counters and re-enforcements, made in a factory that supports Environmental and Social Governance.



FOOTWEAR
UNDER \$250

DR. SCHOLL'S SHOES

DINK IT

\$70

Fashion Meets Performance! These Women's Pickle ball shoes outperform competitors on response time, comfort, traction, ride and stability.

DINK IT
\$70

Own the court in these sneakers specifically designed for Pickleball. They also score major points as the best walking shoes as you move off the court to your next adventure

SUSTAINABLE COMFORT: Anti-microbial, anti-odor Insole Technology with cushioning, comfort, & support. Insoles crafted with cushy, algae-infused BLOOM® foam.



FASHION MEETS PERFORMANCE: These women's pickleball shoes outperform competitors on response time, comfort, traction, ride, and stability.

MERRELL

MTL MQM X REESE COOPER

\$160

Born from the Merrell Test Lab, the MQM X RCI - Moving Quickly over Mountains x Reese Cooper® Inc - is the ultimate hiking multitool imbued with the Reese Cooper vibe. A capable hybrid completed with a triple threat of climbing shoe performance in the front, hiker in the back, and runner agility throughout. Finished with Reese Cooper® branding, the MQM features two Vibram® outsole rubbers to maintain best-in-class traction on all terrains.



VIONIC

UPTOWN LOAFER

\$119.95

Our EPM hero style is a perfectly packable loafer that is smartly deconstructed to collapse flat. Featuring our Vio-Motion technology, a flexible outsole featuring recycled content, and premium soft leathers & suede (majority Leather Working Group Certified).



WET KNOT

BRIGHTON

\$49

Fun and lightweight, water-friendly footwear. Non marking. Just rinse off to clean. Making up 30% of the composition, the plant based bio-material is both innovative and environment friendly.



ZODIAC

ROSLYN

\$159

Pointed-toe western ankle boot



GENERAL ACCESSORIES

BINATA MILLINERY

JOSEPHINE CRYSTAL SKULLCAP

\$450

The Josephine Crystal Skullcap is the perfect accessory to put the finishing touch on your jazz age look. This stylish hat is crafted with stunning crystals, giving you that perfect hint of shimmer.



DEEPA GURNANI

BYRONESQUE HEADBAND

\$3,450

We are taking you back in time, into an era that revolutionized India's history. A time when the rich culture of India met the aesthetics of the Victorian era and gave birth to something unique. Presenting our Byronesque Headband from our FW23 Maharani Collection.



NANDANIE

EMBROIDERED SAKURA FLORAL CLASSIC

\$295

Our Sakura pink classic is a new fun and textured springtime classic that will add a new lift and look to any of your spring-summer look. Set against a stunning white background, these Sakura florals will add layers to your look. Like all of our styles, it comes pre-tied with snaps at the back to adjust to two different sizes.



STREETS AHEAD

ROMI BELT

\$215

The Romi belt is designed with antique silver Italian hardware and a smooth black Italian leather for a comfortable fit.
Ethically made in the USA



WALLAROO HAT COMPANY

TULUM ARTISANAL HAT

\$71

Sustainability meets style in this beautiful natural palm fiber hat featuring a twisted leather band for a stylish touch. The Tulum is meticulously handcrafted by artisans in a co-op outside Guadalajara, Mexico, and looks great on both men and women.



HANDBAGS
OVER \$1,000

BSWANKY

LIDO PEACOCK

\$6,800

Introducing our newest vintage inspired bold silhouette, the Lido. Named for the resort barrier island known for its private beaches and attracting an international audience. Created in our own Sarasota atelier where each and every rare exotic is hand selected and hand cut. Featuring Burmese python in the most daring combination of peacock blue and metallic gold. Where our signature marbled 24 kt gold keyed front closure is showcased. Adorned with 4 custom tassels. With each and every one being truly a unique work of art. Limited to only 5 to ever be created



LEIGH ANN BARNES

GAMECHANGER PATRON - SILVER TIPPED PYTHON

\$1,500

The Gamechanger Patron leads the pack in clear game day and concert bags. The convertible bag effortlessly changes from clear to python or a stunning quilted lambskin in the color of your choosing.



MARINA RAPHAEL

LUCENT CLUTCH

\$3,490

A vibrant clutch that resembles a life-size gem, with a large emerald Swarovski crystal placed in the center of its transparent body.



SAMARIE

THE JANE TOTE

\$1,950

The Jane Tote is uniquely designed and crafted with embossed raffia leather and gold accents for functionality. The leather removable strap allows you to wear the tote on the shoulder or as a crossbody for versatility.



SHINOLA DETROIT

OVERNIGHT SATCHEL

\$1,495

Beautifully crafted from natural leather, the Overnight Satchel is a lesson in premium design that's as lovely as it is practical. Store your goods in the large, open cotton-lined interior and stash your essentials in the interior zip and slip pockets. Leather carry handles elevate the look, and the comfortable webbing shoulder strap is both adjustable and removeable to suit your style.



HANDBAGS
UNDER \$1,000

ALEXIS BITTAR

MOLTEN GOLD BULLET MINAUDIÈRE- GOLD

\$695

Custom designed, the Molten Gold Bullet Minaudière's sleek curvature is formed in gold, metallic laminated, full grain Italian leather with a high scratch resistance. Alexis Bittar's signature, rich 14k gold plated metalwork sculpts an easy to hold top handle that was designed to resemble our best-selling molten bangles. The minaudière is finished with a pull-back button closure.



BETSEY JOHNSON

MILLION STARS PHONE CROSSBODY

\$148

The ultimate in wearable tech! This gleaming phone bag isn't just for show, IT ACTUALLY WORKS! The phone handle detaches so you can make and receive calls wirelessly with connectivity to your cell. Form and function meets style and innovation.



BRAHMIN

CAROLINE IN BLACK NERINA

\$425

The Caroline in Black Nerina is a classic tailored satchel in an oversized croc plate with a metallic twist for a true luxe look. The unique details on this classic silhouette from Brahmin elevates it from ordinary to extraordinary, making this the must have handbag of the season.



COACHTOPIA

ERGO BAG IN UPCRUSHED UPCRAFTED LEATHER \$350

The Coachtopia Ergo in Upcrushed Upcrafted leather is a reimagined shoulder-bag crafted in a new leather, the first of its kind, that transforms Coach leather scraps via heat and pressure into a colorful leather with a minimum 67% lower carbon footprint than similar styles in new leather — resulting in serendipitous colors and patterns that are unique to each product. The bag also comes with a unique digital passport—accessed via an embedded NFC chip—that gives customers transparency into its materials, Made Circular™ design and impacts which provides customers with the means to follow the product's journey as it is repaired, restored, reused and reimagined over multiple lives.



SENREVE

MINI FORTUNA BAG

\$575

Inspired by an exploration of different shapes and structures, we took the full-size Fortuna and created this ultra-chic mini version. Crafted from supple Italian leather, this everyday style features two internal slots for your cards, plus elegant Cavalla buckles on the adjustable strap.



SOCIAL IMPACT

FREIDA ROTHMAN

WOMEN OF STRENGTH

\$495

Born and raised in Brooklyn, Freida Rothman is a second-generation jeweler, a mother of five, and an entrepreneur striving to remind every woman of her inner strength. Inspired by the legacy of her four grandparents - who were all Holocaust survivors - our WOMEN OF STRENGTH campaign was created to celebrate groups of women who are role models and inspire younger generations with their perseverance and strength.

With an unwavering dedication to philanthropy, inspired by the legacy of her four grandparents — she's upheld a legacy of meaningful support for charities nationwide. Through the inclusive WOMEN OF STRENGTH campaign, we proudly align our brand with a diverse range of impactful charities, including ABCD: After Breast Cancer Diagnosis, UJA, LPGA Foundation, Children's Hospitals nationwide, Junior Leagues fostering community events, Nachas Health & Family, and the dedicated Do-Gooders organization. Our philanthropic commitment runs deep, having raised substantial funds through our various programs, supporting diverse causes such as the military, Holocaust survivors, healthcare heroes and more.

Freida continues to catalyze change with over one million women who have found inspiration in Freida Rothman's strength and compelling journey - a profound connection that makes her a remarkable and unforgettable speaker, galvanizing positive actions and a focus on the greater good.

Emboldening local economies, we've nurtured over 150 small businesses through our network of stylists, fostering community growth and inclusion. We stand alongside resilient WOMEN OF STRENGTH across the nation, amplifying their impactful narratives to empower communities.



JUMPER MAYBACH X BIG LOVIE DARK MATRIX WHITE-WINDS BLANKET

\$169

Jumper Maybach X Big Lovie teaming up to end hate and spread love & connection in this world. This wonderful blanket with Jumper Maybach Dark Matrix art brush strokes creates warmth and joy as you wrap your self up in its luxury. For every blanket purchased, a donation is made to a child in need of warmth & love.



KAY JEWELERS AND ZALES

DR. OPAL LEE "GRANDMOTHER OF
JUNETEENTH" BLACK LAB-CREATED OPAL
AND LAB-CREATED SAPPHIRE SUN PENDANT
IN STERLING SILVER
\$149

A special design created by KAY Jewelers and Zales to honor Dr. Opal Lee, known as the "grandmother of Juneteenth," this radiant necklace is a symbol of hope and perseverance. From June 1 to July 31, 20% of each sale of the \$149 pendant (\$30) was being donated to the Black in Jewelry Coalition (BIJC).



UNSHATTERED

ATELIER PREMIER

\$1,200

Unshattered's Atelier Premier is a couture-level bag made from upcycled materials, designed and made completely by women in recovery from addiction. The thoughtful, ethical design is demonstrated in every detail from the upcycled premium leather and chain, to the custom, tear-drop-shaped emblem which echoes Unshattered's logo and represents the past struggles of the artisans.



WOLVERINE X SKILLSUSA

MEN'S RAIDER DURASHOCKS® 6"

CARBONMAX® BOOT

\$185

In May 2023, Wolverine Boots continued its partnership with SkillsUSA to support high school students around the nation as they committed to further their education in the skilled trades by hosting their own National Signing Day and donating \$75,000 to the SkillsUSA Hope Fund. With only 9% of high school students pursuing careers in the trades, skilled labor is in short supply, through partnering with SkillsUSA, Wolverine expanded their charitable initiative Project Bootstrap to celebrate and support those choosing to go into the skilled trades. During National Signing Day, many students wore Wolverine Raider Durashocks, part of Wolverine's Raider line, which is the number best selling franchise for the brand.



SUSTAINABILITY

ARNETTE

CATFISH

\$100

From active icons to original freewheel legends, Arnette has always framed the look of cult style. Spraying up the bodywork of an original icon, the Catfish leads a colorful new skate-style trend. Icon wrapped oval shape made with new recycled material: bioplastic to make sure oldschool keeps it cool. Chilled out and always up for fun, easy-going style gets a boost of ARNETTE character.



BYBBA

THE BALOS

\$56

Quality, design, and function come together in the thoughtful design of this multi-purpose, foldaway tote bag. Made from our exclusive 100% recycled and recyclable Techniluxe™ derived entirely from Ocean Plastic, The Balos has successfully introduced a new tier to the reusable bag market. Available in 12 ocean-inspired colors, each gives back 5% to charity partner, Oceanic Global.



KENGOS FOOTWEAR

BRYCE LACE UP

\$145

Kengos hand made, glue free IKnot construction is assembled without the use of any adhesives! Our supply chain reuses organic waste, runs on solar energy and recycles waste water. We utilize materials like "Amaize" Corn, Eucalyptus Knit, mushroom leather, cactus leather, Agave foam and our "PureFlex" Natural Rubber which decomposes 30x faster than industry standards.



NAUTICA

N6257S

\$160

These on-trend, eco-friendly sunglasses designed in Eastman's Tenite Renew. Tenite Renew frames have the same premium look and feel of acetate with the convenience of injection-molding and design adjustability for a comfortable, unmatched fit. These Nautica sunglasses feature a classic square silhouette with laser etched Nautica and N83 logos on the temples. Polarized lenses reduce glare.



PIPER & SKYE

LOLA CROSSBODY

\$745

One of Piper & Skye's best sellers for its effortless style and day to night functionality is the Lola Crossbody. The Lola is a responsibly-sourced, sustainable luxury bag made in the brand's signature pirarucu fish leather, the largest freshwater fish in South America. Piper & Skye repurposes skins that provide for the surrounding local communities as both a food source and economic income.



TECH AND INNOVATION

FREEMINDED CORP

THE DIPLOMATIC POUCH

\$9,999

Case in alligator offers the perfect opportunity to quickly retrieve your cannabis accessories and set the table for sharing perspectives and predilections. And, if you're in need of a conversation starter, perhaps some reflection on the impeccable craftsmanship of the alligator cannabis storage box to which your companion has already surely taken notice.



PAPRDOLL EYEWEAR

EYEWEAR APPLIQUÉ

\$99

Match your glasses with your outfit or your mood! Easily and economically transform your frames with the peel-and-stick application of a colorful PaprDoll Eyewear Appliqué, compatible with PaprDoll frames and select Warby Parker and Ray-Ban frames.



SHED RAIN

VORTEX V2

\$40

The Vortex V2 stands as a pinnacle of technological ingenuity in umbrella design. Our patented cable enforced technology™ defies inversion in winds up to 75mph, elegantly combining form and function as a true marvel of modern innovation.



SHINOLA DETROIT

THE CANFIELD SPEEDWAY 44MM - LAP 06

\$2,995

Lap 06 of the Canfield Speedway 44mm Automatic Chronograph is a testament to the craft of watchmaking.



SIDECAR

THE OG

\$150

The Sidecar OG is our patented, 14k Clip with genuine leather strap and side strap for fashionable and hands-free carry or wear of hats and small accessories.

Attach your hat to your travel bag, handbag, belt loop, seat back and more! Wear the OG set and take your hat with you using the premium leather strap to wear cross-body, as a purse or backpack style for the ultimate in style and function.

