

adaptie

Application for Civic Care of Public Spaces

Who are we?

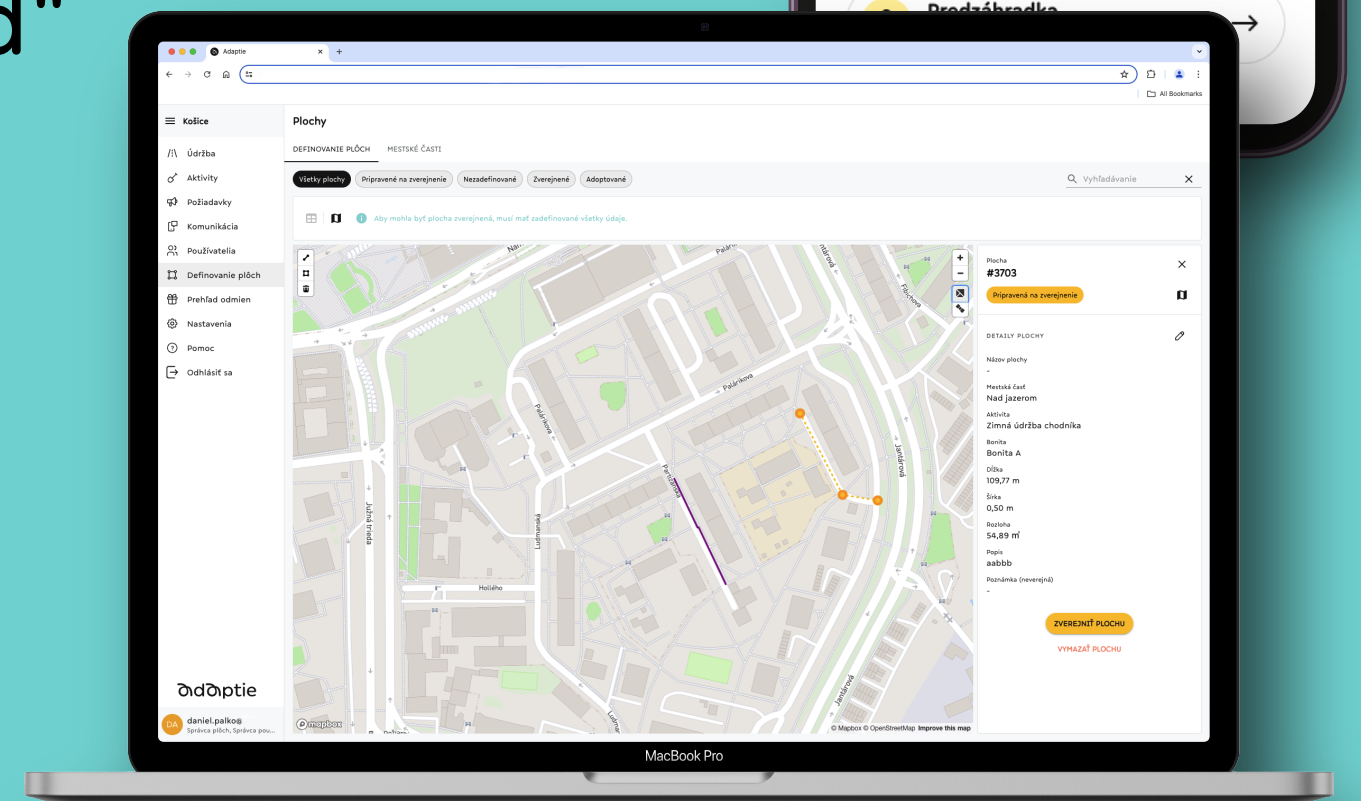
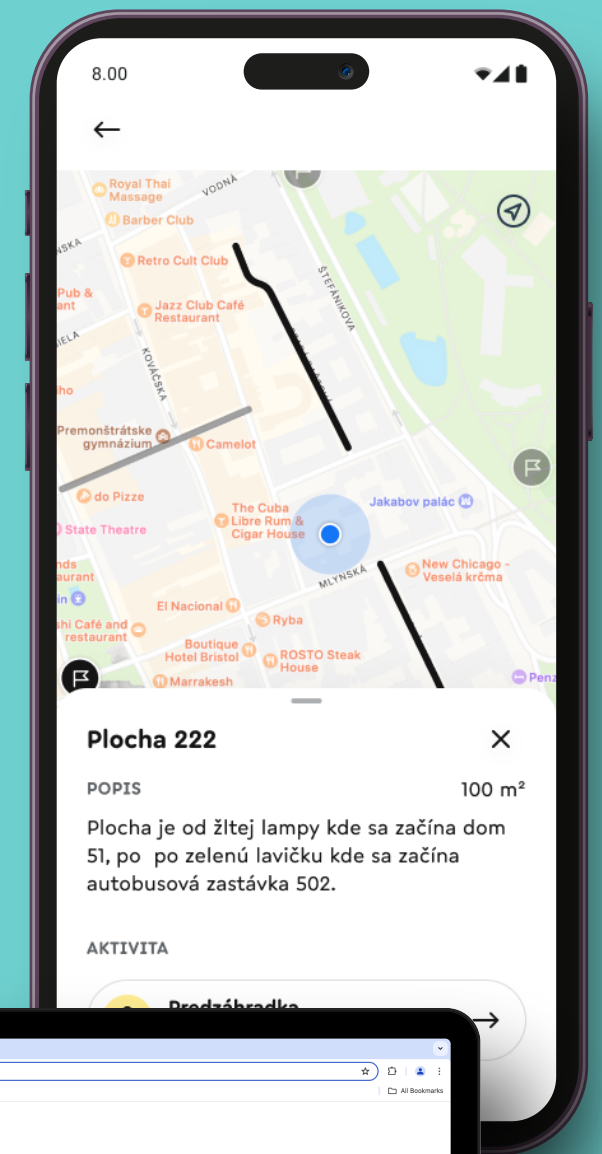
Adaptie is a subsidiary of the established Košice-based IT company **Hotovo**, which has been on the market since 2010. Hotovo primarily specializes in developing software solutions for a wide range of international clients. It is **the technological guarantor** of the Adaptie produc.

www.adaptie.me
www.hotovo.com

What is Adaptie?

Adaptie is a **digital service** that offers the ability to map out public spaces and define various long-term or one-time activities for them.

This space can then be "adopted" by a citizen, who will carry out the defined activity and photographically monitor its progress.



Who is Adaptie for?

It is a **digital tool** for municipalities, enabling them to engage their citizens in various activities focused on enhancing **public spaces**.



Benefits for the City

- reduction of maintenance costs for selected activities
- filling in missing internal capacities of the city by mobilizing citizen volunteers
- a quick, clear, and unified process for citizen involvement in activities
- citizen engagement increases community cohesion and strengthens residents' responsibility for their surroundings
- increased safety (enhanced citizen awareness of their surroundings)
- strengthening the local economy
- faster problem detection (identification and reporting of issues)
- and many others



What can the Adaptie service do?

- mapping any area on the map that can be offered for "adoption" (long-term, i.e., seasonal or one-time)
- detailed description of the area with the definition of the tasks to be performed
- automated generation of contracts between the city and citizens (if required by the city) to set precise collaboration rules
- sending job requests to citizens (activating maintenance), which can be general or targeted at specific parts of the city/town
- digital monitoring of activities performed by citizens (based on photos, time, and location) immediately accessible through the web application
- communication with citizens via SMS and notifications
- and more

What can Adaptie be used for?

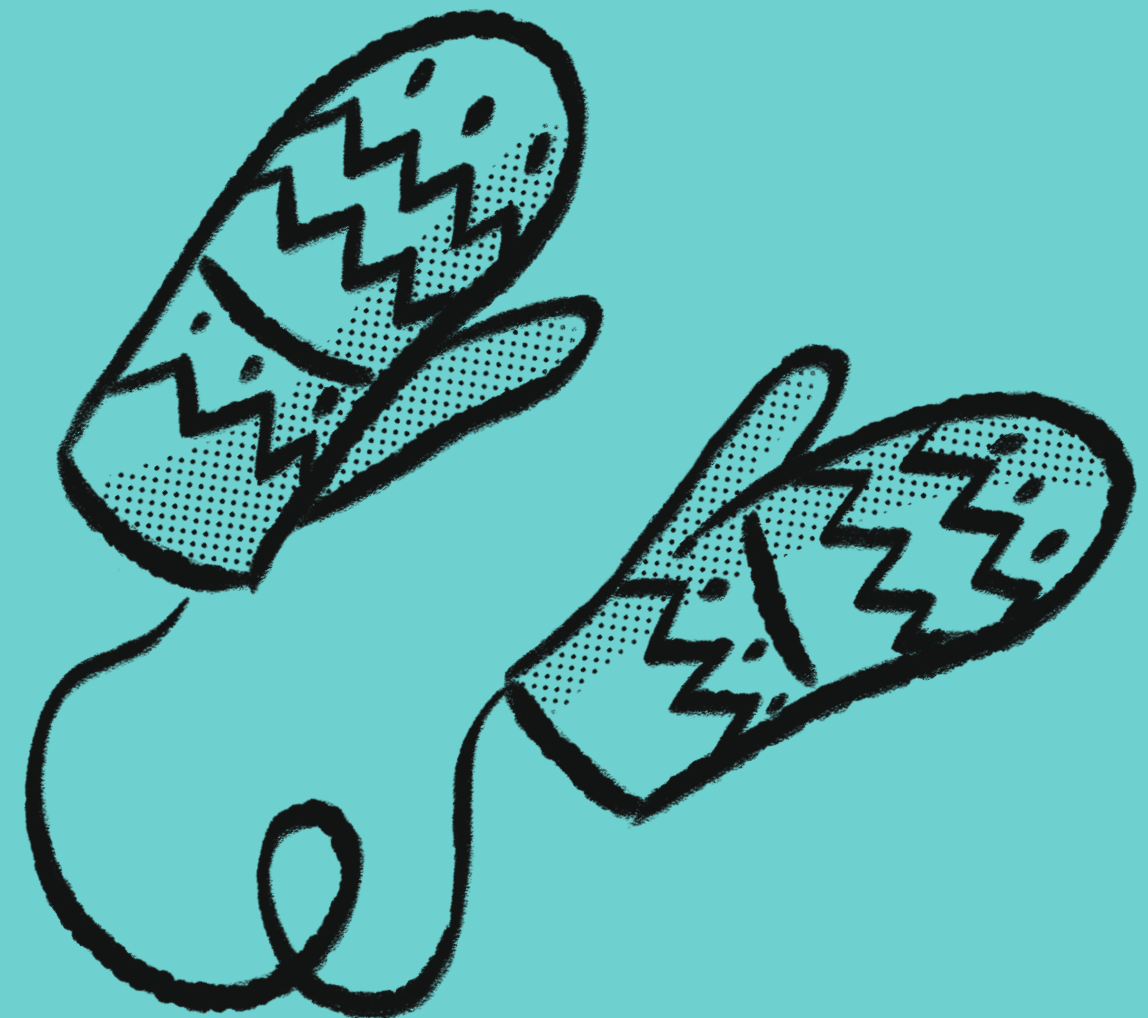
- snow removal from sidewalks and salting during the winter season
- maintenance of front gardens, flower beds, and other green spaces
- raking leaves, mowing grass, and other vegetation management
- cleaning container sites, public dumps, and litter in public areas
- painting benches, fences, etc.
- cleaning and maintaining public transport stops
- and many other activities, both one-time or recurring activities



Example from Practice

The city of Košice uses the service functionality for sidewalk maintenance during the winter season. In the winter season of 2023/2024, over 800 citizens participated in the project (adopted 40k square meters). In addition to various other benefits, this service also provides the city with significant financial savings (about 1,3 mil. per 5 months).

More information on local platform.



What we offer

- **a mobile application** (for citizens) and **a web application** (for municipalities)
for managing the service
- **technical support** for resolving technical issues from both the city's and citizens' sides
- **consultancy** for implementing the service as well as during its operation
- **marketing support** to increase awareness of the service among citizens



Kontakt

Daniel PALKO (co-founder, sales representative, technical support)

daniel.palko@adaptie.me

tel. +421 915 787 999

Dávid KESELICA (sales representative)

david.keselica@adaptie.me

tel. +421 917 091 130

sales@adaptie.me

Adresa

Adaptie s.r.o.

Štúrova 44

04 001 Košice



www.adaptie.me