

# Santa Fe.





# Taking Australian families further.

We have one goal – to be Australia's most loved car company. To get there, we're driven by a simple philosophy that life's most incredible moments shouldn't be reserved for a select few, and everyone should be able to experience an exciting and enjoyable drive.

How do we make that happen? We start by pushing our own boundaries, by making premium the new standard, and by engineering the most enjoyable ride possible.

Australia gives us the opportunity to live active lives. The Santa Fe is designed to help us achieve that. It's strong, stylish and sporty. With enough space to fit the family, the dog, and plenty of gear, you'll be able to explore everything Australia has to offer in comfort and style. From the city, to the sea, the outback, and everywhere in between – the Santa Fe is for families on the go.

You can be sure we've put it through its paces too. Our extensive local tuning program has seen the Santa Fe challenge, and overcome, the harshest conditions Australia can throw at it. The Santa Fe really is the perfect complement to an active Australian lifestyle.



**Santa Fe.**



# Safety first.

Your family’s safety should never be an afterthought, or an added extra. Which is why we won’t settle for anything less than 6 airbags and some of the most advanced safety technology available.

Raising the safety bar is Hyundai SmartSense™<sup>1</sup> – our suite of intelligent features developed to keep you alert to dangers and help you avoid incidents. With features like Smart Cruise Control (SCC), Lane Keeping Assist (LKA) and Driver Attention Warning (DAW), you can be assured that your Santa Fe is always keeping an eye out for your family.

We’re constantly pushing for the next safety breakthrough. Which is why the 7-seater Santa Fe uniquely comes with two advanced safety features. Rear Occupant Alert (ROA)<sup>2</sup> is an industry first feature where it monitors the back seats to detect passengers and alerts the driver if someone’s still in the car after it’s switched off and the doors locked.

Next is Safe Exit Assist (SEA)<sup>2</sup>.The system detects any oncoming vehicles approaching from the rear and alerts the driver that it may be dangerous for passengers to exit the vehicle, with both a sound and pop-up visual warning on the dashboard. If the child safety lock is activated, the SEA system will prevent the door from being unlocked to prevent opening.

With Santa Fe, you know that it’s not just you that puts your family’s safety first.



Surround View Monitor<sup>3</sup>



6 airbags

1. **Hyundai SmartSense™**: Hyundai SmartSense™ is a registered trademark of Hyundai Motor Company. Safety features are not a substitute for attentive driving.  
2. Available on the Elite and Highlander variants.  
3. Available on the Highlander variant.



**Rear Occupant Alert (ROA)<sup>2</sup>**  
Santa Fe is equipped with an ultrasonic sensor placed on the headliner to detect motion in the rear seats. If a driver locks the vehicle unaware of a passenger inside, the system will detect movement and then immediately give out an alarm.



**Safe Exit Assist (SEA)<sup>2</sup>**  
The system detects any oncoming vehicles approaching from the rear and alerts the driver that it may be dangerous for passengers to exit the vehicle, with both a sound and pop-up visual warning on the dashboard. If the child safety lock is activated, the SEA system will prevent the door from being unlocked to prevent opening.



**Blind-Spot Collision-Avoidance Assist (BCA)**  
Blind-Spot Collision-Warning will send visual warnings to the driver when a vehicle is in their blind spot and an audible sound if the driver tries to change lanes with the vehicle still in their blind spot. Blind- Spot Collision-Avoidance Assist will initiate an active avoidance manoeuvre if necessary to avoid potential accidents.



**Rear Cross-Traffic Collision-Avoidance Assist (RCCA)**  
When backing out from a parking position, the sensor detects approaching vehicles from the left or right. The sensor will issue an audible alert and visual warning on the dashboard and if necessary, will initiate a braking manoeuvre.

Santa Fe.



# Drive in style.

You expect a certain style. And with the 7-seater Santa Fe, you've got it. With its bold, aerodynamic silhouette and sleek body, the Santa Fe truly stands out. Just one look at its unique cascading front grille with eye-catching 3D honeycomb feature tells you all you need to know about the Santa Fe's flair for design. Whether you're heading to dinner, taking the kids to soccer or shuttling the neighbours' kids to a birthday party, it's great to know that you're doing it in style.

Lights too, are a clear indication of the Santa Fe's design sensibility. The stacked headlamps and LED Daytime Running Lights provide a powerful luminescence on the road along with a dynamic bending<sup>1</sup> feature which "turns" the corner as you do. Distinctive headlights and the slim LED Daytime Running Lights ensure that you can both see and be seen on the road, no matter what time of day.

The Santa Fe has a strong presence all around. Look from behind and you'll see an SUV with a confident, stable stance with bold tail lights, dual mufflers<sup>2</sup> and a striking bumper design. So while other drivers may be searching the parking lot for their car, you'll find the Santa Fe in the blink of an eye.

The 7-seater Santa Fe: who said you can't have practical and stylish?

1. Available on the Highlander variant.  
2. Not available on the Active petrol variant.  
3. Highlander variant shown.



**Top:** Cascading front grille<sup>3</sup>  
**Bottom:** Alloy wheels<sup>3</sup>



**Top:** Stacked headlamps and LED Daytime Running Lights<sup>3</sup>  
**Bottom:** LED rear lamps<sup>1</sup>

Santa Fe.



# Space that's designed around you.

Where are you heading next? School run? Groceries? Kids' netball practice? Santa Fe isn't just a 7-seater; it's an SUV that's designed around you. An SUV that calmly brings order to the chaos that occasionally overcomes any family.



**Seat configuration<sup>1</sup>**  
With seven separate seat configurations, you can fold seats to suit any trip.



**USB charging ports**  
Smart devices are easily charged through two USB ports in the rear centre console (2nd row) and one USB port in the front centre console cubby.

<sup>1</sup>. Highlander variant shown.  
<sup>2</sup>. Available on the Elite & Highlander variants.



**Rear window sunshades<sup>2</sup>**  
A retractable window blind hidden away in the 2nd row doors protect your precious ones from the heat and glare of the summer sun.



**Air vents**  
Individual air vents in the 2nd and 3rd rows mean everyone can keep their cool.



**Smart one-touch walk-in<sup>1</sup>**  
Collapse and slide forward the seats in the 2nd row at the touch of a button, giving easy access for kids getting in and out of the 3rd row.



**Boot space<sup>1</sup>**  
Need more space? Expand on the boot's capacity by folding the 3rd row flat.



**3rd row grip handles<sup>1</sup>**  
Handles in the 3rd row help occupants enter and exit the vehicle with ease.

**Santa Fe.**





# Beautiful on the inside.

No matter what the time of year, it's always a pleasure to jump in your Santa Fe. In the summer, switch on the ventilated front seats<sup>1</sup> and feel the air cool from beneath. When the chilly days arrive, the heated front seats<sup>1</sup> and heated steering<sup>1</sup> wheel will quickly thaw you out. And thanks to heated second row seats<sup>1</sup>, the little ones in the back will quickly feel warm and cosy too.

The style that's evident in the Santa Fe's exterior design is clear in the spacious interior. And it's not just the high seat position that gives you a better view; the stunning panoramic glass sunroof<sup>1</sup> lets you take in all the scenery as the world passes you by. You'll feel indulged too, with the luxurious, leather appointed interior<sup>2</sup>, available in black, beige or burgundy leather, depending on the variant and exterior colour you choose.

With generous storage space throughout, ISOFIX anchor points in the 2nd row outboard seats and 60:40 split second row seats and 50:50 third row seats, you can quickly configure the Santa Fe to suit every journey for all your passengers.

They say it's what's on the inside that really counts. The 7-seater Santa Fe has taken that to heart.



**Top:** Heated & air ventilated front seats<sup>1</sup>  
**Bottom:** Panoramic glass sunroof<sup>1</sup>

**Top:** Leather appointed interior<sup>2</sup>  
**Bottom:** Heated steering wheel<sup>1</sup>

1. Available on the Highlander variant.  
 2. **Leather appointed** may contain elements of genuine leather, polyurethane leather (leather substitute) or man-made materials, or a combination thereof. Available on the Elite & Highlander variants.



# Born to perform.

It's good to know that however many people you've got on board, your 7-seater Santa Fe has the performance to effortlessly meet the day's demands. You can choose from two engine options: the 2.4 litre GDi Petrol 6-speed automatic (Active variant only) or wthe 2.2 litre CRDi Diesel 8-speed automatic, available across all three variants.

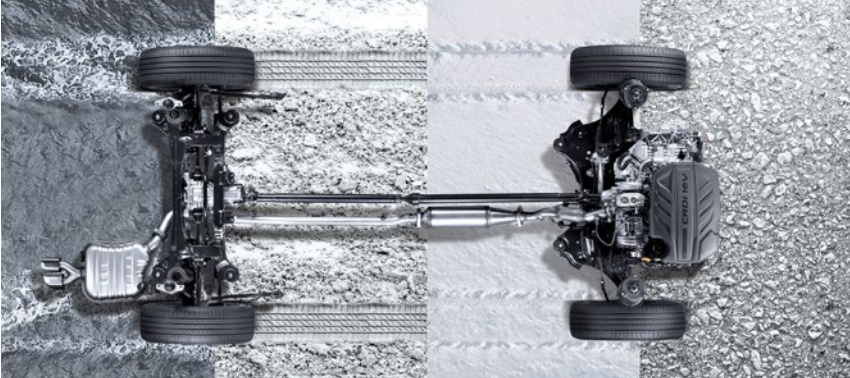
Choose the diesel engine and you can rely on 147kW of power and the reassurance of knowing that you have an exceptional 440Nm of torque at your disposal; ready for whatever the load you're carrying. The petrol engine brings 138kW of power to the table, with more than enough torque – 241Nm – to drive you on. With a seamless 8-speed automatic transmission<sup>1</sup>, and suspension and handling tuned to Australian conditions, the Santa Fe is ready to take on whatever you throw at it.

1. Available on the 2.2L CRDi diesel engine.  
2. Available on the Active variant.

Whichever variant you opt for, each comes with Hyundai's proprietary HTRAC all-wheel drive technology. HTRAC, meaning "Hyundai Traction", increases traction on various environments and surfaces and intelligently redistributes power to all four wheels in more slippery conditions. The ratio of torque distribution also changes with the drive modes and is displayed in the cluster.

- **Comfort mode:** offers improved stability with up to 35 percent torque distributed to the rear wheels.
- **Eco mode:** provides improved fuel efficiency by sending power mainly to the front wheels.
- **Sport mode:** delivers improved acceleration with up to 50 percent torque distributed to the rear wheels.

The 7-seater Santa Fe: ready whenever you are.



HTRAC



2.4 GDi AWD Engine<sup>2</sup>



2.2 CRDi AWD Engine

2.4 GDi AWD <sup>2</sup>		2.2 CRDi AWD	
138	Maximum Power kW/6,000 rpm	147	Maximum Power kW/3,800 rpm
241	Maximum Torque Nm/4,000 rpm	440	Maximum Torque Nm/1,750 - 2,750 rpm

Santa Fe.



# Cleverly connected.

It's easy to take technology for granted; kids certainly do. So take a step back and see how the Santa Fe delivers on keeping your family connected.

Directly in front of you, the clearly laid out cluster tells you all the key information – speed, revs, oil temperature – at a glance.

And, exclusive to the Santa Fe Highlander, the 7" colour supervision cluster display changes colour, depending on what drive mode you're in (Comfort, Eco, Sport or Smart). Then there's our clever Head-Up Display (HUD)<sup>5</sup>, where important vehicle related information is projected directly on the windscreen, so you never need to take your eyes off the road.

For those days that need a bit more planning, the Santa Fe's Satellite Navigation<sup>3</sup> system will calmly guide you through the twists and turns to your destination ahead. Plus, with Apple CarPlay™<sup>1</sup> and Android™ Auto<sup>2</sup> compatibility across the range, you're always just one touch away from the next song.

The Santa Fe's impressive technology extends all the way to the boot of the car with the smart tailgate. When standing within a metre of your boot with your proximity key for more than three seconds, it will automatically open for you<sup>3</sup>.

With the 7-seater Santa Fe, smart technology makes every drive a pleasure.

1. **Apple CarPlay™** functionality requires software update. Apple CarPlay™ requires iPhone 5\* or subsequent model (lightning cable) in order to operate. Apple® and iPhone® are registered trademarks of Apple Inc.
2. **Android™ Auto** requires a device with Android 5.0 operating system or subsequent version, and USB cable in order to operate. Android is a trademark of Google Inc.
3. Available on the Elite & Highlander variants.
4. Highlander variant shown.
5. Available on the Highlander variant.



**Top:** Supervision cluster with trip computer & digital speedometer<sup>5</sup>  
**Middle:** Head-Up Display (HUD)<sup>5</sup>  
**Bottom:** Push button start<sup>3</sup>

**Middle:** Touchscreen with Apple CarPlay™<sup>1</sup> and Android™ Auto<sup>2</sup> compatibility<sup>4</sup>  
**Bottom:** Smart tailgate<sup>3</sup>

Santa Fe.



# Variants.

Life is about choice – so we’ve created three different Santa Fe variants that will let you take to the road the way you want.



## Active.



### Engine and transmission

2.4L GDi (Petrol) AWD – 6-speed automatic  
2.2L CRDi (Diesel) AWD – 8-speed automatic

### Key specifications:

#### Safety

- 6 airbags
- Rear view camera
- Rear parking sensors
- Tyre Pressure Monitoring System (TPMS)
- Electronic Stability Control (ESC) including:
  - Anti-lock Braking System (ABS)
  - Brake Assist System (BAS)
  - Downhill Brake Control (DBC)
  - Electronic Brakeforce Distribution (EBD)
  - Hill-start Assist Control (HAC)
  - Traction Control System (TCS)
  - Vehicle Stability Management (VSM)
- Hyundai SmartSense™<sup>1</sup> including:
  - Blind-Spot Collision-Avoidance Assist – Rear (BCA-R)
  - Driver Attention Warning (DAW)
  - Forward Collision-Avoidance Assist (FCA) – Car, Pedestrian & Cyclist
  - High Beam Assist (HBA)

- Lane Keeping Assist (LKA)
- Rear Cross-Traffic Collision-Avoidance Assist (RCCA)
- Smart Cruise Control (SCC) with Stop & Go

#### Interior and technology

- One touch flat folding seats – 2nd row
- Rear seat split folding – 60:40 (2nd row) and 50:50 (3rd row)
- 2nd and 3rd row manual air vent controls
- 2x USB ports (2nd row)
- Leather appointed<sup>3</sup> steering wheel & gear knob
- Cargo blind
- Luggage net
- ISOFIX child restraint anchors (rear outboard seats) – 2nd row
- Top tether child restraint anchors (rear) – 3 anchors – 2nd row
- Electronic Parking Brake (EPB)

- Drive modes – Comfort, Eco, Smart & Sport
- 7" touchscreen display with Apple CarPlay™<sup>2</sup> and Android™ Auto<sup>2</sup> compatibility
- Bluetooth®<sup>4</sup> (phone & audio streaming) with voice recognition
- 3.5" TFT LCD with trip computer & digital speedometer
- Steering wheel mounted phone & audio controls

#### Exterior and technology

- 17" alloy wheels
- LED daytime running lights
- Front fog lights
- LED rear fog lights
- Roof rails
- LED side repeaters integrated into side mirrors
- Heated side mirrors



17" alloy wheels



USB charging ports



Blind-Spot Collision-Avoidance Assist-Rear (BCA-R)



Air vents in 2nd & 3rd rows

## Elite.



### Engine and transmission

2.2L CRDi (Diesel) AWD – 8-speed automatic

### Key specifications above Active:

#### Safety

- Hyundai SmartSense™<sup>1</sup> including:
  - Rear Occupant Alert (ROA)
  - Safe Exit Assist (SEA)
- Power child locking system

#### Interior and technology

- Leather appointed<sup>3</sup> seats
- Deluxe cloth pillar, sunvisor and roof trim
- Dual zone climate control
- Rear door window sunshades
- Paddle shifters
- Glovebox cooling
- 8" touchscreen with satellite navigation
- Rain sensing wipers
- Smart key with push button start

- Electronic driver and passenger's seat
- Infinity® Premium Audio

#### Exterior and technology

- 18" alloy wheels
- Carbon grey radiator grille
- Rear Privacy glass
- Smart tailgate
- Electronic folding side mirrors



18" alloy wheels



Safe Exit Assist (SEA)



8" touchscreen with satellite navigation



Rear door window sunshades

## Highlander.



### Engine and transmission

2.2L CRDi (Diesel) AWD – 8-speed automatic

### Key specifications above Elite:

#### Safety

- Hyundai SmartSense™<sup>1</sup> including:
  - Advanced Smart Parking Assist System (ASPAS)
  - Surround View Monitor (SVM)

#### Interior and technology

- Panoramic glass sunroof
- Heated and air ventilated front seats
- Heated rear outboard seats
- Heated steering wheel
- Suede pillar, sunvisor and roof trim (only on Burgundy interior)
- Head-Up Display (HUD)
- Wireless smartphone charger<sup>5</sup>
- Integrated Memory System (IMS) – driver's seat

- Power adjustable driver's seat - 14-way (including 4-way lumbar support and drivers cushion extension)
- 7" supervision cluster with trip computer & digital speedometer

#### Exterior and technology

- 19" alloy wheels
- LED headlights (BI-function) with dynamic bending
- LED taillights
- LED front fog lights
- Continental tyres



19" alloy wheels



Panoramic glass sunroof



Surround View Monitor (SVM)



Head-Up Display (HUD)

1. **Hyundai SmartSense™** is a registered trademark of Hyundai Motor Company. Safety features are not a substitute for attentive driving. 2. **Apple CarPlay™** functionality requires software update. Apple CarPlay™ requires iPhone 5® or subsequent model (lightning cable) in order to operate. Apple® and iPhone® are registered trademarks of Apple Inc. **Android™ Auto** requires a device with Android 5.0 operating system or subsequent version, and USB cable in order to operate. Android is a trademark of Google Inc. 3. **Leather appointed** may contain elements of genuine leather, polyurethane leather (leather substitute) or man-made materials, or a combination thereof. 4. **Bluetooth®** is a registered trademark of Bluetooth SIG, Inc. Please check your Bluetooth® device's capabilities to ensure compatibility. 5. **Wireless smartphone charger** requires a Qi-enabled smartphone or adaptor to operate.



# Style, your way.

Your new Hyundai should stand out. And because the Santa Fe is hard working, stylish, and intelligent, we've developed an interior and exterior colour range that emphasises these qualities.

After all, everyone's different. From the colour of the paint, to the shade of the trim – take the opportunity to complement your personality and make sure the Santa Fe fits right into your every day life.

## Santa Fe colour combination chart<sup>1</sup>

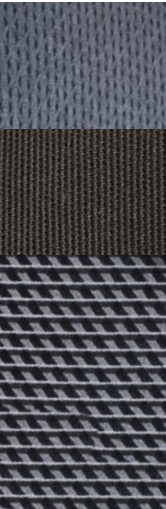
Model	White Cream (Mica) Standard Paint	Typhoon Silver (Metallic) Premium Paint	Wild Explorer (Metallic) Premium Paint	Magnetic Force (Metallic) Premium Paint	Phantom Black (Mica) Premium Paint	Earthly Bronze (Metallic) Premium Paint	Rain Forest (Metallic) Premium Paint	Horizon Red (Mica) Premium Paint	Stormy Sea (Mica) Standard Paint
Active									
Black interior	•	•	•	–	–	–	–	•	–
Sepia interior	–	–	–	•	–	–	•	–	•
Elite									
Black leather appointed <sup>2</sup> seats	•	•	–	•	o <sup>4</sup>	–	–	•	•
Dark Beige leather appointed <sup>2</sup> seats	–	–	–	–	o <sup>4</sup>	•	•	–	•
Highlander									
Black leather appointed <sup>2</sup> seats	•	•	–	•	o <sup>4</sup>	•	•	•	•
Dark Beige leather appointed <sup>2</sup> seats	–	–	–	–	o <sup>4</sup>	•	•	–	•
Burgundy leather appointed <sup>2</sup> seats	•	–	•	•	o <sup>4</sup>	–	–	–	–

1. Colours shown are indicative only and may vary due to the printing process. Metallic and mica paint are optional extras.  
2. **Leather appointed** may contain elements of genuine leather, polyurethane leather (leather substitute) or man-made materials, or a combination thereof. Black, Dark Beige & Burgundy leather not available in all variants and exterior colours. Availability dependent on variant and exterior colour.  
3. Available on the Active variant.  
4. Only available with Dark Chrome exterior treatment.

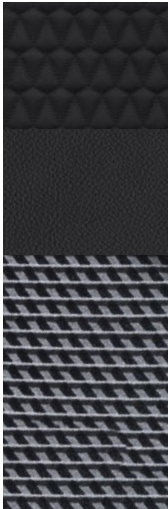
## Santa Fe Interiors



Black/Grey Cloth<sup>3</sup>



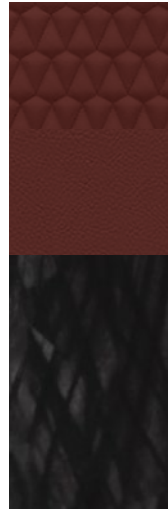
Black Leather<sup>2</sup>



Dark Beige Leather<sup>2</sup>



Burgundy Leather<sup>2</sup>





# Hyundai Genuine Accessories.

Your Santa Fe isn’t just an SUV. It’s an extension of you. So make it as unique as you are, with Hyundai Genuine Accessories.†

Roof and bike racks give you extra storage, while a tough cargo liner can help protect the boot from spills or wet gear (and dogs).

No matter what your lifestyle demands, there’s a suite of practical, and stylish Hyundai Genuine Accessories† to match.

Genuine Accessories	Active	Elite	Highlander
Technology			
Auxiliary Cable¹	•	•	•
iPad® Holder²	•	•	•
Interior			
Tailored carpet floor mats - Black (front and 2nd row)	•	•	•
Tailored carpet floor mat - Black (3rd row)	•	•	•
Tailored carpet floor mats - Brown (front and 2nd row)	-	•	•
Tailored carpet floor mat - Brown (3rd row)	-	•	•
All Weather Floor Mats (front and 2nd row)	•	•	•
Rubber cargo liner	•	•	•
Cargo Barrier³	•	•	-
Dash mat non HUD	•	•	-
Dash mat with HUD	-	-	•
Fabric Rear Bumper Protector	•	•	•
Portable Cooler⁴ (12 volt, 15 litre)	•	•	•
Cargo Organiser	•	•	•
Exterior			
Alloy Nudge Bar⁵	•	•	•
Headlight Protectors (set of 2)	•	•	•
Bonnet Protector (Nose cone - Tinted)	•	•	•
Slim stylevisors - (set of 4 - Tinted)	•	•	•
Towbar, Towball & Trailer Wiring Harness⁶	•	•	•
Styling			
Interior footwell lighting - white	•	•	•
Roof Racks and Lifestyle			
Hyundai genuine roof racks⁸	•	•	•
Roof Mounted Bike Carrier⁸	•	•	•
Thule Bike Rack (Wheel on)⁸	•	•	•
Roof Mounted Kayak Holder⁸	•	•	•
Ski & Snowboard Carrier⁸	•	•	•
Surfboard Carrier ⁸	•	•	•
Roof Pod 395L⁸	•	•	•
Styling			
First Aid Kit (4 Pocket)	•	•	•

†All Hyundai Genuine Accessories are subject to warranty conditions. See your nearest Hyundai dealer or visit our website at [www.hyundai.com.au](http://www.hyundai.com.au) for full warranty terms and usage recommendations.

1. Auxiliary cable not suitable for Apple® devices. 2. iPad® is a registered trademark of Apple Inc. The iPad® holder has been designed to hold iPad® models 1, 2, 3, 4 or Air Securely. To ensure occupants are protected in the event of a collision, the screen protector must be fitted to the iPad® when in use. iPad® not included.

3. Not Compatible with panorama glass roof. 4. Only suitable for use with a retractable seatbelt. 5. Available late October 2018. 6. Towing capacity = 2000kg Braked; 750kg Unbraked. Maximum ball download 100kg. (150kg with genuine Hyundai load assist kit). Towbar capacity subject to regulatory requirements, towbar design, vehicle design and towing equipment limitations. 7. Load Capacity = 80kg evenly distributed over 2 bars. Roof racks should be removed when not in use. 8. Requires fitment of roof racks at additional cost.







# Relax, we'll take it from here.

There's a reason why our iCare program has won awards<sup>1</sup>. We built iCare around one simple, innovative idea. That comprehensive on-the-road care should come standard with every car – not just as an “optional extra.”

Our five-year, unlimited kilometre warranty<sup>2</sup> means you've got the freedom to go ahead and drive without having to keep an eye on the odometer.

Imagine knowing the maximum price of your next scheduled service, before pulling into the service centre. That's the advantage of our Lifetime Service Plan<sup>3</sup> – a clever Hyundai initiative that gives you transparency and peace of mind for the life of your car. No hidden fees and surprises.

Since every new Hyundai is built to the highest standards, we've got the confidence to offer comprehensive customer service without exception – or as we like to say, amazing as standard. And that includes Sat Nav Update Plan<sup>4</sup>, and a 24/7 Roadside Support<sup>5</sup> for up to ten years when you service with us.



iCare



1. 2015 Canstar Blue Innovation Excellence Awards (5 Stars). 2. **5 year/unlimited km warranty:** Applies to new passenger vehicles used for private/domestic purposes. Excludes vehicles used at any time for “commercial application” as defined in the vehicle warranty policy, for which a 5 year/130,000km (whichever occurs first) warranty applies. Refer to full warranty terms & conditions for details and exclusions. 3. **Lifetime Service Plan:** For the benefit of Hyundai owners, Hyundai provides online quotes which specify the maximum price applicable for a vehicle's next scheduled maintenance service at a participating authorised Hyundai dealer and using genuine Hyundai parts (where required). Online quotes are available at [hyundai.com.au](http://hyundai.com.au), apply for a stated effective period only and may change after that effective period without notice. Standard scheduled maintenance services are of limited scope. The benefit of online quotes is available for all Hyundai vehicles, for their lifetime. 4. **Sat Nav Update Plan:** Maximum number of 9 updates delivered on an annual cycle which must be undertaken within 10 years of the vehicle's purchase. Complimentary map updates apply only if the vehicle completes a scheduled service at a participating Hyundai dealer. 5. **Roadside Support Plan:** Complimentary 12 months Roadside Support when you purchase a new Hyundai passenger vehicle (excluding rental buyers). Further Roadside Support extensions are available, each for 12 months from the date of a scheduled maintenance service at a participating authorised Hyundai dealer (unless vehicle is more than 108 months (9 years) from the original new car sale date, in which case entitlement to Roadside Support ends when vehicle reaches 120 months (10 years) from original new car sale date).

Santa Fe.





# Big help, for little Aussies.

Every time a new car is sold at one of our Dealerships, both Hyundai and the Dealer will donate part of the sale price to Hyundai Help for Kids™.

Hyundai Help for Kids™ offers funding to child-focused organisations and charities working to improve the lives of children all over Australia – from supporting community initiatives, to providing much-needed medical equipment.

So when you buy a Hyundai, you're buying more than just a car. Together with Hyundai Help for Kids™, you're empowering thousands of young Australians and giving them a better future.



Hyundai Help for Kids™ is a registered trademark of Hyundai Motor Company.

**Santa Fe.**

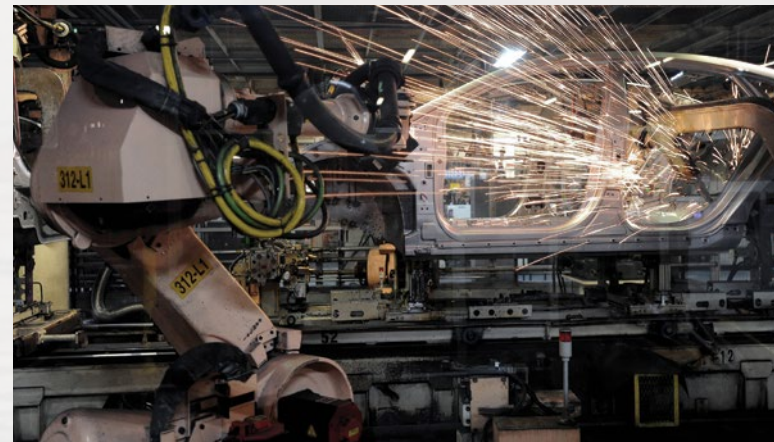
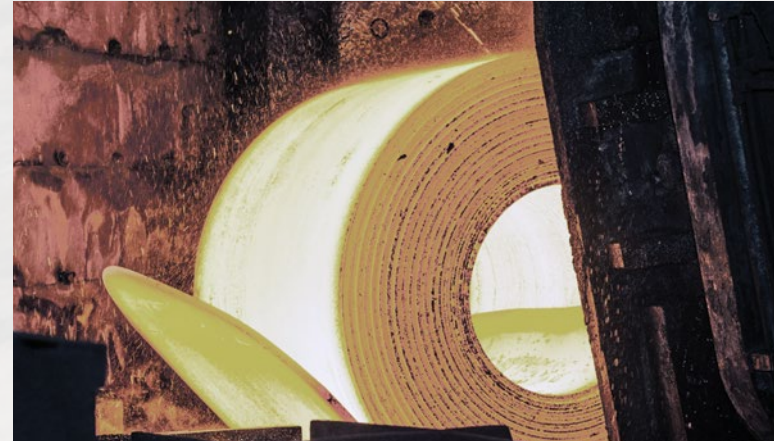


# Australia, in our DNA.

We're one of the biggest car manufacturers in the world – and one of the fastest growing global car brands.

We're also the only car company in the world producing its own steel, because we know the best steel makes for the strongest cars.

That's why we source the majority of our high quality iron ore from right here, in Australia's backyard. So now, when you buy a new Hyundai, you know you're driving a car that's directly connected to home.



**Santa Fe.**



Hyundai Santa Fe		
Engine	2.4 GDi AWD	2.2 CRDi AWD
Engine family	Theta II	R series
Configuration	Transverse front mounted driving front and rear wheels	Transverse front mounted driving front and rear wheels
Cylinder capacity	2.4 litres (2,359 cc)	2.2 litres (2,199 cc)
Number of cylinders	4 in-line	4 in-line
Valve system	Twin overhead cam shafts, 4 valves per cylinder	Twin overhead cam shafts, 4 valves per cylinder
Intake system	2-step variable induction system	Electronic Control Variable Geometry Turbocharger (E-VGT)
Maximum power	138 kW @ 6,000 RPM	147 kW @ 3,800 RPM
Maximum torque	241 Nm @ 4,000 RPM	440 Nm @ 1,750 - 2,750 RPM
Fuel system	Gasoline Direct injection (GDi)	Common Rail Direct injection (CRDi)
Fuel type	91 RON (ULP), E10 compatible	Diesel
Emissions standard	Euro 5	Euro 5
Bore x stroke	88.0 mm x 97.0 mm	85.4 mm x 96.0 mm
Compression ratio	11.3:1	16:1
Transmission	2.4 GDi AWD	2.2 CRDi AWD
All Wheel Drive (AWD) System	Active on-demand 4WD with 50/50 front & rear lock mode	Active on-demand 4WD with 50/50 front & rear lock mode
Automatic	6 speed automatic	8 speed automatic
Gear ratio	Automatic	Automatic
1st	4.639	4.808
2nd	2.826	2.901
3rd	1.841	1.864
4th	1.386	1.424
5th	1.000	1.219
6th	0.772	1.000
7th	–	0.799
8th	–	0.648
Reverse	3.385	3.425
Final	3.648	3.320
Engine / transmission availability	2.4 GDi AWD	2.2 CRDi AWD
	Automatic	Automatic
Active	•	•
Elite	–	•
Highlander	–	•
Steering		
Type	Rack mounted Motor Driven Power Steering (R-MDPS), rack & pinion	
Minimum turning circle diameter between kerbs / walls	11.42 m	
Number of steering wheel turns lock to lock	2.53	
Suspension	2.4 GDi AWD	2.2 CRDi AWD
Front	MacPherson strut	
Rear	Multi-link	

**Key:**  
• = Feature is available on trim      – = Feature is not available on trim

Hyundai Santa Fe			
Brakes	2.4 GDi AWD		2.2 CRDi AWD
	Automatic		Automatic
System	Dual-diagonal, split circuit, power assisted with Electronic Brakeforce Distribution (EBD) and Brake Assist System (BAS)		
Front brake type			Ventilated disc
Front disc dimensions			320 mm x 28 mm
Rear brake type			Solid disc
Rear disc dimensions			305 mm x 11 mm
Weight	2.4 GDi AWD		2.2 CRDi AWD
	Automatic		Automatic
Kerb weight – lightest	1,745 kg		1,870 kg
Kerb weight – heaviest	1,870 kg		1,995 kg
Gross Vehicle Mass (GVM)	2,485 kg		2,630 kg
Permissible Axle Weight (PAW) – front	1,300 kg		1,300 kg
Permissible Axle Weight (PAW) – rear	1,395 kg		1,395 kg
Roof rack load limit	100 kg		100 kg
Towing capacity	2.4 GDi AWD		2.2 CRDi AWD
	Automatic		Automatic
Braked	2,000 kg		2,000 kg
Unbraked	750 kg		750 kg
Maximum towball weight (with genuine Hyundai accessory assist kit)	100 kg (150 kg)		100 kg (150 kg)
Fuel consumption*	2.4 GDi AWD		2.2 CRDi AWD
	Automatic		Automatic
Combined (L/100km)	9.3		7.5
Urban (L/100km)	12.6		9.9
Extra Urban (L/100km)	7.3		6.2
CO <sup>2</sup> – combined (g/km)	217		198
Fuel tank volume	71 L		

\*Source: Australian Design Rule 81/02 static laboratory combined average city and highway cycle test. Real world fuel consumption will vary depending on a combination of driving habits, the condition of the vehicle, and other factors such as road, traffic and weather conditions. ADR 81/02 test results are meant for comparison purposes only.

Dimensions	Active	Elite	Highlander
Exterior			
Length	4,770 mm		
Width	1,890 mm		
Height (with roof rails)	1680 mm (1,705 mm)		
Wheelbase	2,765 mm		
Wheel track – front / rear	1,643 mm / 1,652 mm	1,638mm / 1,647 mm	1,635 mm / 1,644 mm
Minimum ground clearance (based on kerb weight)	185 mm		
Approach / departure / ramp break over angle	18.5° / 21.2° / 20.7°		
Interior			
Head room front / centre / rear (w/ Sunroof)	1,016 / 995 / 917 mm (974 / 963 / 917 mm)		
Leg room front / centre / rear	1,048 - 1,120 / 1,001 / 746 mm		
Shoulder room front / centre / rear	1,500 / 1,480 / 1,344 mm		
Hip room front / centre / rear	1,460 / 1,430 / 1,568 mm		
Cargo area – VDA (minimum / maximum)	547 / 1,625 Litres		

Hyundai Santa Fe			
Wheels & tyres	Active	Elite	Highlander
Wheel type	Alloy	Alloy	Alloy
Wheel dimensions	17 x 7.0J +47	18 x 7.5J +49.5	19 x 8.0J +51
			235/55 R19 101V (Continental ContiSportContact™ 5)
Tyre dimensions	235/65 R17 104H	235/60 R18 107V	
Spare wheel type	Full size alloy	Full size alloy	Full size alloy
Driving convenience	Active	Elite	Highlander
Electronic Parking Brake (EPB) (with auto hold function)	•	•	•
Integrated Memory System (IMS) – driver's seat	–	–	•
One touch turn signal – 3, 5, or 7 flashes	•	•	•
Rain sensing wipers	–	•	•
Rear wiper – 2-stage, with auto wipe on reverse	•	•	•
Smart Key with push button start	–	•	•
Steering wheel mounted controls – audio, phone, cruise control & trip computer	•	•	•
Tilt & telescopic steering column	•	•	•
Driving engagement	Active	Elite	Highlander
Drive Mode – 4 settings (Comfort, Eco, Sport, Smart)	•	•	•
Paddle shifters	–	•	•
Active safety	Active	Elite	Highlander
Electronic Stability Control (ESC) including;			
Anti-lock Braking System (ABS)	•	•	•
Brake Assist System (BAS)	•	•	•
Electronic Brakeforce Distribution (EBD)	•	•	•
Downhill Brake Control (DBC)	•	•	•
Hill-start Assist Control (HAC)	•	•	•
Traction Control System (TCS)	•	•	•
Vehicle Stability Management (VSM)	•	•	•
Hyundai SmartSense™ <sup>1</sup> including;			
Advanced Smart Parking Assist System (ASPAS)	–	–	•
Blind-Spot Collision-Avoidance Assist – Rear (BCA-R)	•	•	•
Driver Attention Warning (DAW)	•	•	•
Forward Collision-Avoidance Assist (FCA) – Car, Pedestrian & Cyclist	•	•	•
High Beam Assist (HBA)	•	•	•
Lane Keeping Assist (LKA)	•	•	•
Rear Cross-Traffic Collision-Avoidance Assist (RCCA)	•	•	•
Rear Occupant Alert (ROA)	–	•	•
Safe Exit Assist (SEA)	–	•	•
Smart Cruise Control (SCC) with Stop & Go	•	•	•
Surround View Monitor (SVM)	–	–	•
Other features			
Emergency Stop Signal (ESS)	•	•	•
Parking Distance Warning-Front (PDW-F) – 4 sensors, with guidance display	–	•	–
Parking Distance Warning-Reverse (PDW-R) – 4 sensors, with guidance display	•	•	–
Parking Distance Warning-Front (PDW-F) – 6 sensors, with guidance display	–	–	•
Parking Distance Warning-Reverse (PDW-R) – 6 sensors, with guidance display	–	–	•
Rear view camera with dynamic guide lines	•	•	•
Speed limiter	•	•	•
Tyre Pressure Monitoring System (TPMS) – individual tyre pressure readout	•	•	•

**Key:**  
• = Feature is available on trim      – = Feature is not available on trim

Hyundai Santa Fe			
Passive safety	Active	Elite	Highlander
Airbags			
Front airbags – driver & front passenger	•	•	•
Side (thorax) airbags – driver & front passenger	•	•	•
Side curtain airbags – 1st & 2nd rows	•	•	•
Roll-over Sensor	•	•	•
Doors			
Impact sensing auto door unlock	•	•	•
Rear door child safety locks	•	–	–
Power child locking system	–	•	•
Seatbelts			
Pretensioners, load limiters & height adjustable upper mounts on front seat belts	•	•	•
Pretensioners & load limiters on rear (outboard) seat belts – 2nd row	•	•	•
Seat belt reminder – front & rear seatbelts	•	•	•
Seat belt holder – 2nd & 3rd rows	•	•	•
Seating			
Height adjustable front head restraints with tilt function	•	•	•
Height adjustable rear head restraints	•	•	•
ISOFIX child restraint anchors (rear outboard seats) – 2nd row	•	•	•
Top tether child restraint anchors (rear) – 3 anchors – 2nd row	•	•	•
Smart one touch flat folding (switch operated) – 2nd row	•	•	•
Security	Active	Elite	Highlander
Security system			
Active lock/unlock operation (user configurable)	•	•	•
Anti-theft alarm	•	•	•
Central locking	•	•	•
Engine immobiliser	•	•	•
Remotes			
Keyless entry remote – 2x	•	–	–
Smart Key remote – 2x	–	•	•
Multimedia system	Active	Elite	Highlander
Functions			
Apple CarPlay™ <sup>2</sup> & Android Auto™ <sup>3</sup> compatibility	•	•	•
Bluetooth® <sup>4</sup> phone connectivity	•	•	•
Satellite navigation	–	•	•
SUNA™ <sup>5</sup> Live Traffic Updates	–	•	•
Touch screen – 7" display	•	–	–
Touch screen – 8" display	–	•	•
Speakers			
Audio system – 6 speakers	•	–	–
Infinity® premium audio system – 10 speakers with external amplifier	–	•	•
Audio/media sources			
AM/FM radio	•	•	•
Digital radio (DAB+)	–	•	•
Radio Data System (RDS)	•	•	•
AUX / USB audio input with iPod® <sup>6</sup> compatibility	•	•	•
Bluetooth® <sup>4</sup> audio streaming	•	•	•

**Notes:**  
1. **Hyundai SmartSense™** is a registered trademark of Hyundai Motor Company. Safety features are not a substitute for attentive driving. 2. **Apple CarPlay™** functionality requires software update. Apple CarPlay™ requires iPhone® 5 or subsequent model (lightning cable) in order to operate. Apple® and iPhone® are registered trademarks of Apple Inc. 3. **Android™ Auto** requires a device with Android 5.0 operating system or subsequent version, and USB cable in order to operate. Android is a trademark of Google Inc. 4. **Bluetooth®** is a registered trademark of Bluetooth SIG, Inc. Please check your Bluetooth® device's capabilities to ensure compatibility. 5. **SUNA™ Live Traffic Updates:** SUNA™ Traffic coverage is available in the following metropolitan areas: Adelaide, Brisbane, Canberra, Gold Coast, Melbourne, Perth and Sydney and the following regional areas: Geelong, Bendigo, Ballarat, Hobart, Darwin, Newcastle, Central Coast, Wollongong, Sunshine Coast and Ipswich. 6. **iPod®** is a registered trademark of Apple computer Inc., registered in the U.S. and other countries.



Hyundai Santa Fe			
Occupant comfort & convenience	Active	Elite	Highlander
Upholstery/trim			
Leather appointed <sup>7</sup> interior – steering wheel & gear knob	•	–	–
Leather appointed <sup>7</sup> interior – seats, steering wheel & gear knob	–	•	•
Carpet floor mat – cargo compartment	•	•	•
Front seats			
Driver's seat – height adjustable	•	•	•
Driver's seat – manually adjustable (including 2-way lumbar support)	•	–	–
Driver's seat – power adjustable – 10-way (including 2-way lumbar support)	–	•	–
Driver's seat – power adjustable – 14-way (including 4-way lumbar support and drivers cushion extension)	–	–	•
Passenger's seat – power adjustable – 8-way	–	•	•
Passenger's seat – walk-in switch – driver's control for slide and recline	–	•	•
Front centre console storage cubby – power outlets – 1 x 12V outlet	•	•	•
Front centre console storage cubby – power outlets – 1 x USB charger	•	•	•
Front centre console – wireless charging pad (Qi standard) <sup>8</sup>	–	–	•
Grip handles – 1x (passenger)	•	•	•
Rear seats			
Centre fold down armrest	•	•	•
Rear centre console power outlets – 2 x USB charger outlets	•	•	•
Grip handles – 2x	•	•	•
Walk-in switch - control for slide function to access 3rd row	•	•	•
Windows/shades			
Acoustic laminated windshield glass	–	–	•
Panoramic glass sunroof – dual panel with tilt and slide front panel and power sunblind	–	–	•
Power windows – front & rear	•	•	•
One touch window up & down function with anti-pinchng safety feature – driver's window	•	•	•
Rear door window sunshades	–	•	•
Solar control glass	–	•	•
Rear privacy glass	–	•	•
Sunvisor (extendable) – driver and front passenger	•	•	•
Doors/boot/tailgate			
Luggage area power outlet – 1 x 12V outlet	•	•	•
Smart Tailgate (rear power tailgate with hands-free opening) – speed adjustable	–	•	•
Vision & sight	Active	Elite	Highlander
Interior mirror			
Electro-chromatic Mirror (ECM) – auto-dimming with integrated compass	–	•	•
Exterior mirrors			
Heated	•	•	•
Power adjustable	•	•	–
Power adjustable with auto-dip on reverse function	–	–	•
Power folding with auto fold function	–	•	•
Instrument cluster/driving displays			
Head-Up Display (HUD)	–	–	•
Instrument cluster – 3.5" TFT LCD with trip computer & digital speedometer	•	•	–
Supervision cluster – 7" TFT colour LCD with trip computer & digital speedometer	–	–	•
Ventilation & heating	Active	Elite	Highlander
Air conditioning			
Climate control – dual zone with auto defog function	–	•	•
Manual controls	•	–	–
Cabin air filter	•	•	•
Cluster ioniser (clean air function)	–	•	•
<b>Key:</b>			
• = Feature is available on trim      – = Feature is not available on trim			

Hyundai Santa Fe			
Ventilation & heating	Active	Elite	Highlander
Air conditioning			
Cooling/heating vents – 2nd row	•	•	•
Cooling/heating vents – rear floor – 2nd & 3rd rows	•	•	•
Front seats			
Air ventilated front seats	–	–	•
Heated front seats	–	–	•
Rear/2nd row outboard seats			
Heated rear outboard seats	–	–	•
Other features			
Glovebox cooling	–	•	•
Heated rear windshield	•	•	•
Heated steering wheel	–	–	•
Exterior styling	Active	Elite	Highlander
Front			
Front grille – black	•	–	–
Front grille – carbon grey	–	•	•
Front grille upper garnish insert – dark chrome	–	• <sup>9</sup>	• <sup>9</sup>
Front grille upper garnish insert – satin chrome	•	•	•
Skid plate – silver	•	•	•
Side			
Door frame & beltline moulding – satin chrome	•	•	•
Exterior door handles – dark chrome	–	• <sup>9</sup>	• <sup>9</sup>
Exterior door handles – satin chrome	–	•	•
Side garnish insert – dark chrome	–	• <sup>9</sup>	• <sup>9</sup>
Side garnish insert – satin chrome	–	•	•
Rear			
Tailgate and lower bumper garnish – dark chrome	–	• <sup>9</sup>	• <sup>9</sup>
Tailgate and lower bumper garnish – satin chrome	• <sup>10</sup>	•	•
Dual exhaust tips – chrome, trapezoidal	• <sup>11</sup>	•	•
Spoiler – body colour matched, tailgate mounted	•	•	•
Skid plate – silver	•	•	•
Interior styling	Active	Elite	Highlander
Treatments			
Alloy effect finish (interior door handles)	•	•	•
Alloy effect inserts (steering wheel and transmission gear knob)	•	•	•
Alloy effect surrounds (HVAC dials, air vents and transmission housing)	•	•	•
Carbon fibre effect inserts (doors and dashboard)	•	• <sup>12</sup>	• <sup>12</sup>
Stone effect inserts (doors and dashboard)	• <sup>13</sup>	–	–
Wood effect inserts (doors and dashboard)	–	–	• <sup>14</sup>
Materials			
Black headlining	–	–	• <sup>15</sup>
Melange knite headlining	–	•	•
Premium materials – door centre trim	–	•	•
Fabric A-pillar covers, roof lining and sunvisors	–	•	•
Suede A-pillar covers, roof lining and sunvisors	–	–	• <sup>15</sup>
Lighting	Active	Elite	Highlander
Exterior lighting - front			
Fog lights	•	•	–
Fog lights – LED	–	–	•
Daytime Running Lights (DRL) – LED	•	•	•
Headlight functions – automatic dusk sensing with escort and welcome	•	•	•

**Notes:**  
7. **Leather appointed** may contain elements of genuine leather, polyurethane leather (leather substitute) or man-made materials, or a combination thereof. 8. **Wireless charging** requires a Qi-enabled smartphone or adapter in order to operate. 9. Dark chrome exterior treatments available only with phantom black exterior paint. 10. Satin chrome lower bumper garnish not available on active trim. 11. Single type trapezoidal exhaust with chrome tip available on petrol variant of active trim. 12. Carbon fibre effect treatments available only on black interior with cross pattern treatments on beige interior. 13. Stone effect interior treatments available only with sepia interior. 14. Wood effect interior treatments available only with burgundy leather. 15. Suede interior treatments available only with burgundy leather.

Hyundai Santa Fe			
Lighting	Active	Elite	Highlander
Exterior lighting - front			
Headlight type – LED (low/high beam)	–	–	•
Headlight type – projector beam	•	•	–
Positioning lights – LED	•	•	•
Dynamic bending lights	–	–	•
Exterior lighting - rear			
Fog lights – LED	•	•	•
High Mount Stop Light (HMSL) – LED	•	•	•
Rear combination lights – LED (bulb indicator and reverse lights)	–	–	•
Exterior lighting - others			
Courtesy lights – LED, in front door handles	–	•	•
Puddle lights – in side mirrors	–	•	•
Side repeaters – LED, integrated into side mirrors	•	•	•
Interior lighting - front			
Front room lights and map lights	•	•	–
Front room lights and map lights – LED	–	–	•
Vanity mirror lights	•	•	•
Glovebox compartment light	•	•	•
Interior lighting - rear			
Centre room light	•	•	–
Map lights (outboard) – LED	–	–	•
Interior lighting - others			
Cargo area light	•	•	•
Interior light fade-out delay	•	•	•
Safety lights – integrated in doors (front)	•	•	•
Storage solutions	Active	Elite	Highlander
Front seats			
Centre console – deluxe type	•	•	•
Cup holders – centre console	•	•	•
Front seat back pockets	•	•	•
Glovebox compartment	•	•	•
Retractable sunglasses compartment	•	•	•
Ticket holders – sunvisors (driver and front passenger)	•	•	•
Rear seats			
Coat hooks – 1x	•	•	–
Coat hooks – 2x	–	–	•
Cup holders – armrest	•	•	•
Rear seating split folding – 60:40 (2nd row) and 50:50 (3rd row)	•	•	•
Boot/Luggage area			
Cargo cover – retractable with 2 position setting, with underfloor storage capability	•	•	•
Luggage compartment – 6x mounting points	•	•	•
Luggage net	•	•	•
Underfloor storage recess	•	•	•
Others			
Doors – map pockets and bottle bulges (front and rear)	•	•	•
Cup holders – recess on right side of 3rd row	•	•	•
Side storage recesses – left side of 3rd row	•	•	•
Roof Rails	•	•	•



Santa Fe.



 Like us at [facebook.com/hyundaiaustralia](https://facebook.com/hyundaiaustralia)

 Follow us at [twitter.com/hyundaiaus](https://twitter.com/hyundaiaus)

**Hyundai Motor Company Australia**

394 Lane Cove Road, Macquarie Park, NSW Australia 2113

[www.hyundai.com.au](http://www.hyundai.com.au)

Hyundai Motor Company (HMC) and the Hyundai Motor Company Australia (HMCA) each reserve the right to alter vehicle specifications and equipment levels without notice. Some equipment featured on the cars in this brochure may not be available in Australia or may be optional. To the extent permitted by law, neither HMC nor HMCA shall be liable to any person as a result of reliance on the content of this brochure. Please consult your Hyundai Dealer for the latest specifications, equipment levels, options, prices, colours and vehicle availability. Metallic and mica paint are optional extras. Note: information in this brochure is current as at 20/06/2018. Part No. TM0618B