



LEAF



Nissan LEAF SIMPLY AMAZING

A powerful step forward, get ready for a whole new way to drive, where the everyday is exhilarating. Feel more confident, excited, and connected – wherever you go.





Go Clean

with zero tailpipe emissions

Go Further

with 270km range*

Go everywhere

with our ever growing EV charging network across Australia

Go with everything
you need

Featuring 5 seats, a 405L boot and a bold, aerodynamic design,
the Nissan LEAF gets you there with stylish efficiency

*315km range tested to Australian NEDC ADR81/02 standard. 270km indicative driving range using the new WLTP test procedure for the European spec model. Note Australian model has not been tested using WLTP test procedure. Figures obtained after the battery was fully charged. Figures stated for the purposes of comparison amongst vehicles tested to the same technical procedures only. Actual real world driving range may vary depending on factors such as battery age and condition, driving style, use of heating/cooling, traffic conditions, weather conditions, any accessories fitted and vehicle load.

FIND MORE THRILLS

with instant power at take-off and intelligent driving technologies for a smooth, exhilarating ride.

FEEL IN CONTROL

with the Nissan e-Pedal†. Yes! You only need one pedal to accelerate, decelerate and come to a complete stop in the Nissan LEAF.

BE MORE CONNECTED

Seamless connectivity with the introduction of Apple Carplay* and Android Auto** Auto.

SEE AND SENSE MORE

with Around View® Monitor and smart technologies like Rear Cross Traffic Alert, Blind Spot Warning and Traffic Sign Recognition.

Prepare your senses
for an experience like no other and enjoy a new way of driving that pushes all the right buttons.

With Nissan Intelligent Mobility, you're connected to your LEAF like never before. See more around you, sense more, and do everything with more confidence. This is what driving was always supposed to be.

Have a blast at the drop of e-Pedal

It's a completely new way to drive, and a whole lot of fun. Imagine having the option to drive with one pedal. Just press down for an instant rush and ease off to slow down. It can even hold the vehicle on a hill without ever touching the brake. Of course, going back to driving with two pedals is as easy as flipping a switch, but where's the fun in that?

NISSAN
INTELLIGENT
MOBILITY



e-Pedal[†] Speed up, slow down and come to a complete stop with just the accelerator pedal, making for a simple and easy drive.

[†]The e-pedal may not be suitable under all driving conditions, correct operation is the responsibility of the driver. See Owner's Manual for details.



Feel more confident with the suite of
Nissan Intelligent Mobility features, including:



**INTELLIGENT
CRUISE CONTROL:**
watches the flow
of traffic to take
the tedium out of
highway driving.



**INTELLIGENT LANE
INTERVENTION:**
helps keep you where
you want to be.
It taps the brakes to
help gently guide you
back if it detects that
you're unintentionally
straying out of your
lane for too long.



**INTELLIGENT AUTO
HEADLIGHTS
with full LED:**
headlamps light your
way by automatically
turning on when it
gets dark and dip
temporarily when an
oncoming vehicle
is detected.



**BLIND SPOT
WARNING:**
change lanes with
confidence. This
feature keeps an
eye on the blind spot
area and gives you a
heads-up if it detects
a vehicle hiding there.

So smart it can step in when you need it most

You may not even know why traffic suddenly slows down. But **Intelligent Emergency Braking*** with Pedestrian Detection is keeping an eye out and ready to apply the brakes. Of course, that's not the only way LEAF can step in to help keep you out of trouble.

Get a bird's-eye view of any space you want



INTELLIGENT AROUND VIEW® MONITOR* helps you see more around you and makes complicated manoeuvres easy. With a virtual 360° bird's-eye view of your LEAF, plus selectable split-screen close-ups of the front, rear and kerbside views, you'll slide into the tightest spots and make it look easy without ever scuffing a wheel again.



REAR AND
AROUND VIEW

FRONT AND
AROUND VIEW

FRONT OR REAR
AND KERBSIDE



*Driver's aid(s) only, not a substitute for safe driving. Always monitor your surroundings.



Get a little warning before you make a move

FEEL MORE AROUND YOU Even if you can't see that car sneaking up on you or a person on the corner that's about to cross the road, Nissan Intelligent Mobility features* can assist you to take notice and give you a heads-up. Whether you're backing out of a parking spot or changing lanes on the main road, they make you more aware of your surroundings and give you a whole new level of confidence.

*Driver's aid(s) only, not a substitute for safe driving. Always monitor your surroundings.



INTELLIGENT AROUND VIEW® MONITOR* can give you an alert when it detects moving objects near your vehicle. This system increases your view of your surroundings.



REAR CROSS TRAFFIC ALERT* This feature helps you back out of a space more safely. It watches around the rear of your LEAF, and can warn you about cars approaching from either side.

Glide through the air

with greater efficiency

AERODYNAMIC
SPOILER

WIND-DIFFUSING
SIDE MIRRORS

LOWER
DIFFUSER

CONTINUOUS FLAT
UNDERBODY

Bold looks are only the beginning. With an advanced aerodynamic design that allows LEAF to glide through the air, you get an impressively efficient ride, not to mention an unbelievably quiet one.

It has never been easier or quicker to get moving; from plugging the LEAF into a dedicated home wall-box or even just a power-point, to tapping into one of the ever growing public charging stations available across Australia.



7 KW HOME AND PUBLIC CHARGING



**FAST HOME CHARGING: 7KW WALLBOX
FULL CHARGE IN AROUND 7.5 HOURS[†]**

[†]This Home Charging time is based on, and requires use of a 32A / 6.6kW (7kW) wall box. Home Charging time will be dependent on charging conditions, including Home Charging type and condition, battery temperature and size as well as ambient temperature at point of use. Home Charging time is for a 40kWh battery, and is based on Nissan testing. Before using this product at home, consult with a licenced electrician to ensure your homes electrical system can support the use.

Charging has never been so easy



50 KW PUBLIC QUICK CHARGING

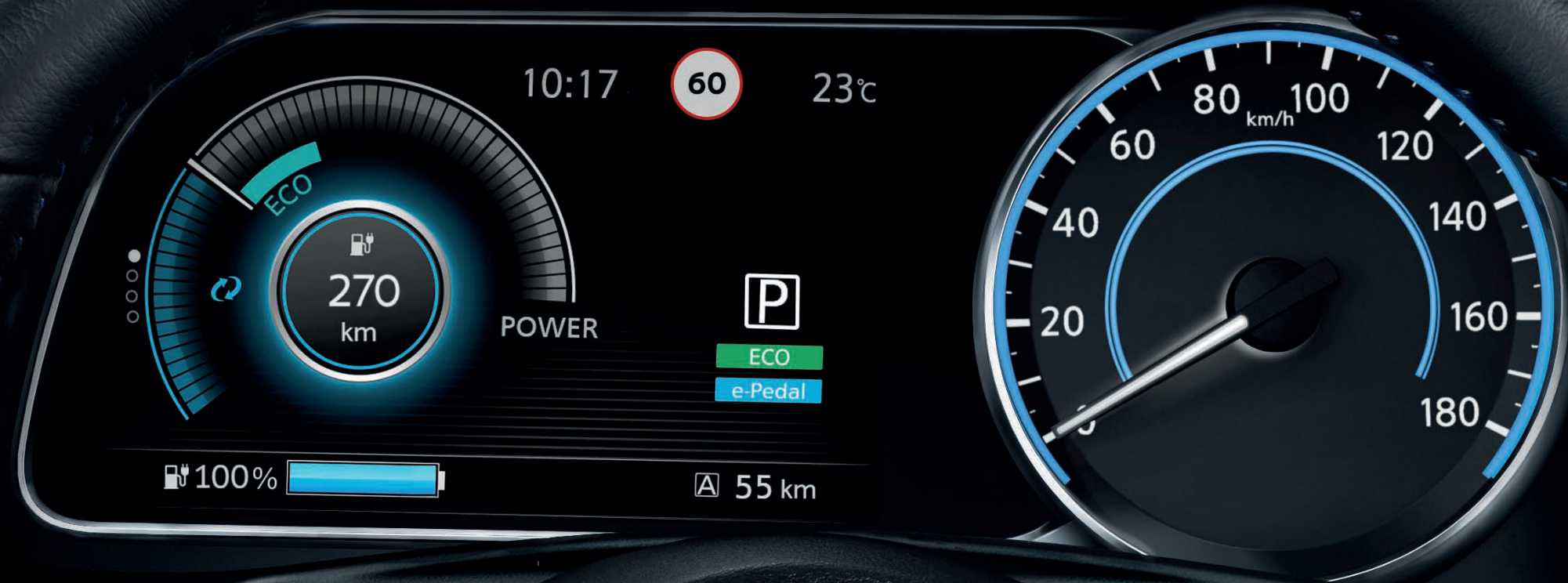


**RAPID CHARGING FROM 20 TO 80%
IN AROUND 60 MINUTES***

^{*}Figures quoted are for a 40kWh battery. Time dependent on charging conditions, including charger type and condition, battery temperature as well as ambient temperature at point of use. Indicated rapid charging time requires use of a CHAdeMO rapid charger. The Nissan LEAF is designed to support the majority of journeys in daily life and is equipped with charging safeguards to protect the battery during repeated rapid charging sessions in a short period of time. The time taken for successive rapid charging can take longer if the battery temperature activates the battery safeguarding technology.

Put **every detail**
on brilliant display

Live at the forefront of technology with the Advanced Driver Assist® Display. It lets you customise every detail of your drive, from range to power use to navigation, on a stunning, full-colour screen. This is the information age on full display.



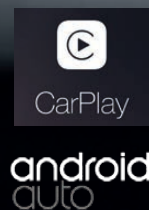
Browse your audio system easily.



Turn-by-turn navigation has never been easier to follow, with every turn displayed right in front of you.

SEAMLESS MOBILE INTEGRATION

Apple CarPlay® and Android® Auto are the safer, smarter ways to enjoy the things you love. Access music, maps, make calls, send and receive messages – all without touching your phone. Just plug in your phone and go.



YOUR MUSIC. YOUR WAY Use Bluetooth streaming audio or the USB input to play music directly from your smartphone.

*Carplay is a trademark of Apple Inc. Android Auto is a trademark of Google LLC. Connecting a mobile phone should only be done when the car is parked safely. Use of the system should always be in accordance with the Australia Road Rules. Drivers should only use the system when it is safe to do so. Users should be aware of the potential for hands-free technology to distract attention from the road, which could impact on having full control of the vehicle. Functionality and compatibility will vary depending on the device.

An interior truly designed around you with your LEAF

With its ergonomic layout, distinctive centre console and a floating central screen that puts your phone on centre stage, this interior was clearly designed with a more connected experience in mind. Nissan LEAF puts all the tools you need to control your car right in your pocket.



DISTINCTIVE DASH

HEATED FRONT AND
REAR OUTBOARD SEATS

IMPRESSIVE LEGROOM

UNIQUE BLUE ACCENTS

Experience

comfort at the sound of silence

What would it be like to drive a silent car? Try stepping inside the luxuriously quiet cabin and you'll find a new level of silence – until you turn up the Bose® Energy Efficient Premium Audio System, that is. With comfort features such as heated seats and heated steering wheel, every drive has a chance to be amazing.



BOSE

BOSE® ENERGY EFFICIENT PREMIUM AUDIO SYSTEM

Even the audio system is energy-conscious. With seven small, lightweight, and strategically placed speakers, the Bose engineers created an audio system that saves power, without sacrificing sound quality. All so you can rock out more efficiently.

Load up

whatever the day demands

LEAF is ready for your next outing with an impressive amount of cargo space, a low rear cargo floor and 60:40 split rear seats that fold down easily. It all adds up to a vehicle that can handle just about anything you ask of it with a capacity of 405 litres.





Nissan LEAF will lead the way
Simply Amazing.

LEAF

Powertrain & Charging equipment

- e-Powertrain with 40kWh laminated lithium-ion battery
- 110kW of power
- 320Nm of torque
- Indicative driving range of 270km (WLTP combined cycle)[#]
- ECO Mode
- e-Pedal
- Shift-by-wire drive selector
- Intelligent Trace Control
- Intelligent Ride Control
- Charge ports (AC Type-2 & DC CHAdeMO)
- MODE-3 EVSE cable (Type-2) supplied

Exterior

- LED signature daytime running lights
- 17" alloys wheels with temporary wheel
- Privacy glass
- Auto-folding heated door mirrors with integrated LED turn indicators
- Front and rear fog lights
- Dusk-sensing LED headlights with auto levelling system
- High Beam Assist
- Metallic blue rear bumper finisher
- Rear spoiler
- Chrome door handles

Comfort/Convenience

- Friendly Lighting function
- Climate control with on-board timer
- Digital Speedometer
- Auto-dimming rearview mirror
- Rain-sensing front wipers
- Intelligent Cruise Control
- Intelligent Key[®] with push button start
- On-board charge timer
- 7" Advanced Drive-Assist[®] Display

Seating

- Tilt-adjustable leather-accented steering wheel^{*} with heating function
- Black leather-accented seat trim[^] with Ultrasuede[®] inserts
- 6-way manual-adjustable driver seat
- 4-way manual-adjustable front passenger seat
- Heated seats (front and outboard rear)
- 60:40 split rear seats

Connectivity

- Apple CarPlay[®] and Android Auto[®] smartphone mirroring[†]
- Voice recognition
- iPod[®] compatible USB port^Δ
- 12V power outlet
- 8" colour touch-screen display
- Satellite navigation
- Digital Radio (DAB+)
- Bluetooth (phone/audio)
- 7 speaker Bose[®] Energy Efficient premium audio

Safety

- ISOFIX rear child-seat anchorage points with tether points
- Hill Start Assist
- Intelligent Around View[®] Monitor with Moving Object Detection
- Parking sensors (front & rear)
- Intelligent Driver Alertness
- Intelligent Forward Collision Warning
- Intelligent Emergency Braking with pedestrian detection
- Intelligent Lane Intervention
- Blind Spot Warning
- Rear Cross Traffic Alert
- Rearview camera with predictive path technology
- Tyre Pressure Monitor System
- Lane Departure Warning
- Vehicle Sound for Pedestrian (low-speed)
- Traffic Sign Recognition

[#]315km range tested to Australian NEDC ADR81/02 standard. 270km indicative range using the new WLTP test procedure for European spec model. Australian model has not been tested using WLTP test procedure. 315km range tested to Australian NEDC ADR81/02 standard. Figures obtained after the battery was fully charged. Figures stated for the purposes of comparison amongst vehicles tested to the same technical procedures only. Actual real world driving range may vary depending on factors such as battery age and condition, driving style, use of heating / cooling, traffic conditions, weather conditions, any accessories fitted

[†]Carplay is a trademark of Apple Inc. Android Auto is a trademark of Google LLC.

^ΔiPod is a registered trade mark of Apple Inc.

[^]Leather accented features and upholstery may contain synthetic material.

[†]This Home Charging time is based on, and requires use of a 32A / 6.6kW (7kW) wall box. Home Charging time will be dependent on charging conditions, including Home Charging type and condition, battery temperature and size as well as ambient temperature at point of use. Home Charging time is for a 40kWh battery, and is based on Nissan testing. Before using this product at home, consult with a licenced electrician to ensure your homes electrical system can support the use.



LEAF INTERIOR SHOWN



BLACK LEATHER ACCENTED SEAT TRIM[^] WITH ULTRA SUEDE[®] INSERTS

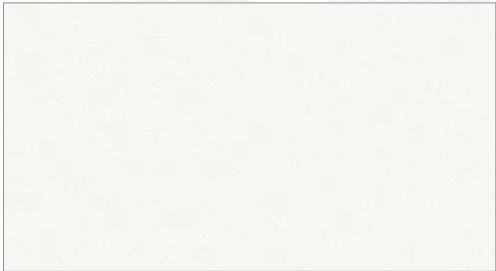
8" DISPLAY WITH NISSAN DOOR-TO-DOOR NAVIGATION



405 LITRES OF STORAGE

FULL CHARGE IN UP TO 7.5 HOURS[†]

CHOOSE YOUR COLOUR



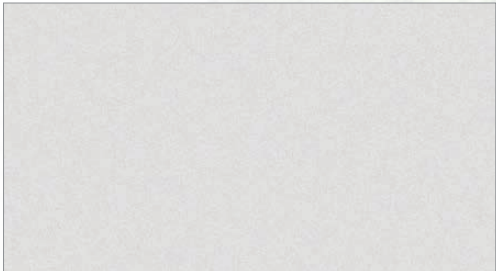
Arctic White (326)



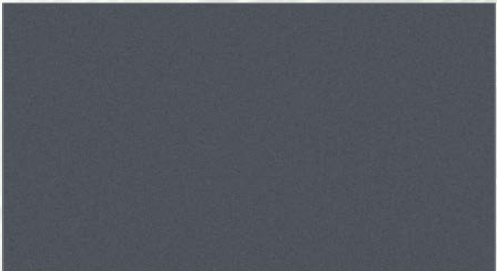
Magnetic Red (NAJ)[#]



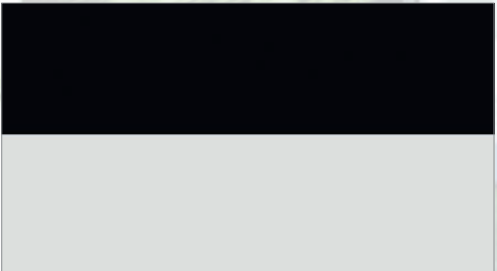
Pearl Black (Z11)[#]



Platinum (KY0)[#]



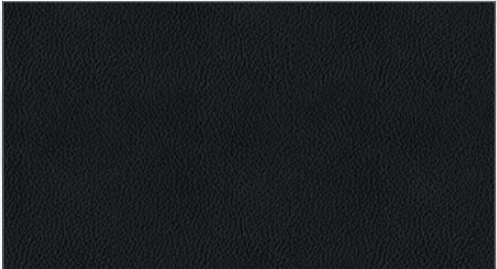
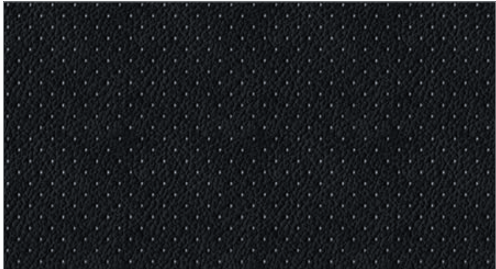
Gun Metallic (KAD)[#]



Ivory Pearl with Pearl Black roof (XDF)^{##}

In some cases, the printed colours may vary from the actual paint colours.
[#]Premium paint available at extra cost.
^{##}Two tone paint available at extra cost

TRIM



Black leather-accented seat trim[^] with Ultrasuede[®] inserts

Minor trim variations may occur from time to time.
[^]Leather accented features and upholstery may contain synthetic material.





STYLE

Customise your Nissan LEAF to perfectly suit your lifestyle with the wide range of Nissan Genuine Accessories. From stylish Mirror Caps to Illuminated Kick Plates, each accessory has been designed to complement the looks of your Nissan LEAF. So hit the road in style with Nissan Genuine Accessories.

ORGANISE

Keep your gear organised and secure with Nissan Genuine Accessories. A Trunk Liner, Roof Bars and Floor Organiser are just a few of the accessories that can help keep your gear safely stored while you're on the road in your Nissan LEAF.



LEAF in Ivory Pearl shown.

ACCESSORISE YOUR NISSAN LEAF

TO VIEW THE FULL RANGE OF
NISSAN GENUINE ACCESSORIES VISIT:
nissan.com.au/LEAFAccessories



WHY CHOOSE GENUINE?

By fitting Nissan Genuine Accessories you can rest easy knowing our high-quality standards ensure the perfect fit, increased safety and reliability, allowing you to future-proof your Nissan. Your Nissan vehicle is an important investment so don't compromise – insist on Nissan Genuine Accessories.

NISSAN GENUINE ACCESSORIES
COMPLETE CONFIDENCE



Nissan Intelligent Mobility guides everything we do. At Nissan, we use new technologies to transform cars from mere transportation. Together the journey is more confident, connected, and exciting. Whether it is cars that share the task of driving or highways that charge your EV as you go along, it's all in the very near future. And it's a future already taking shape in the Nissan you drive today.



Follow us
@Nissan_Aus



Like us
Nissan Australia



Check out
NissanAustralia

nissan.com.au