

The Amarok



Commercial
Vehicles



Uncompromising off-road. Spirited on the asphalt. The new Amarok combines everything that you expect from an exclusive, premium-class all-rounder: a masculine design and robust construction along with plenty of power.

100% OFF-ROAD

New V6 3.0L TDI engine.

Performance of either 165kW / 550Nm or 190kW / 580Nm for the top of the line Amarok Aventura model.

2.0L TDI engine.

Tried and tested 4 Cylinder, Twin Turbo engine with torque of up to 420 Nm.

Permanent 4WD.

Featuring Volkswagen's iconic permanent 4MOTION all-wheel-drive system built for supreme safety on road, full time. Equally as impressive off the beaten track and beyond. Standard equipment on all models.

High level of safety on every terrain.

With off-road ABS and ESP with hill start/descent assist and trailer stabilisation.

New exterior design.

New styling features including revised front end, bi-xenon headlights*, new alloy wheel options and unique paint colours.

New interior design.

Redesigned dash panel, fresh upholstery options and optional ergoComfort 14-way power seats.

Modern infotainment systems.

"Discover Media*" with large colour touchscreen display, navigation and App-connect*.

Best loading platform.

Widest load platform and extremely lightweight tailgate for easy loading.



*Features not standard on all models.
Model shown on front cover is International specification.

n and Off Road.





Cockpit with premium equipment and first class comfort and space.

The new Amarok provides a convincing combination of space and first class comfort. The interior cockpit features the new dash panel with a new decorative trim and A4 format storage compartments on selected models. Additionally, all models include a leather-covered multifunction steering wheel which is also height and reach adjustable.



01 New ergoComfort seats with 14-way adjustment*. Both front seats are heated and can be electrically adjusted in twelve ways using a control unit or manually adjusted in two ways. Available in Vienna or Nappa leather.

12 V sockets (not illustrated). With up to 4 x 12V sockets* inside the vehicle: one in the dash panel, one in the central console and one in the rear row of seats.



02 New "Discover Media" infotainment. With 6.33 inch colour touchscreen display, navigation, MP3 compatible CD player and 6 loudspeakers.*

03 Also featuring App-Connect - enabling you to connect to your Volkswagen using Apple Carplay®, Android Auto and MirrorLink®. Music, mapping, messaging and more.

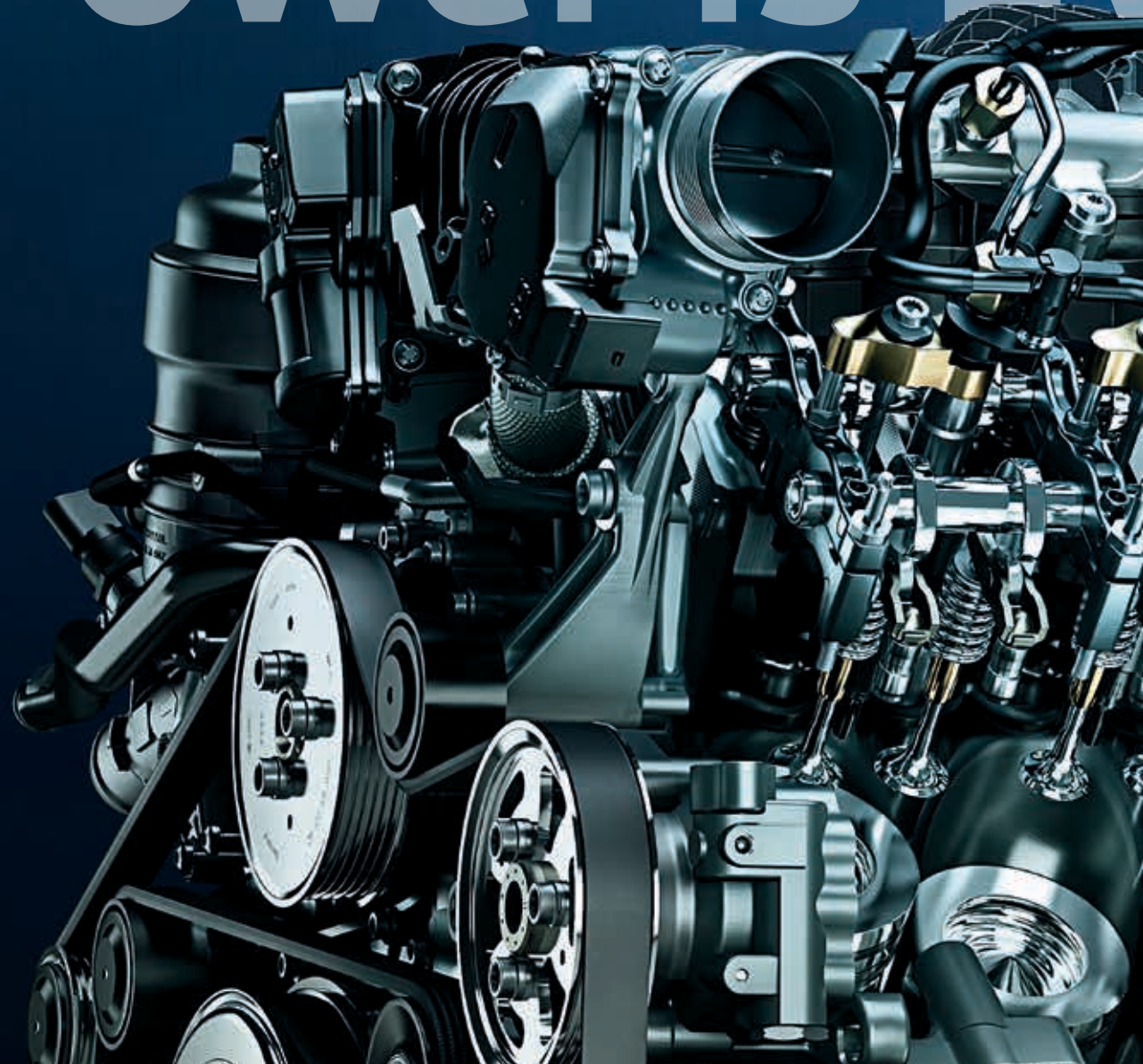
*Features not standard on all models.

When Power is Ev

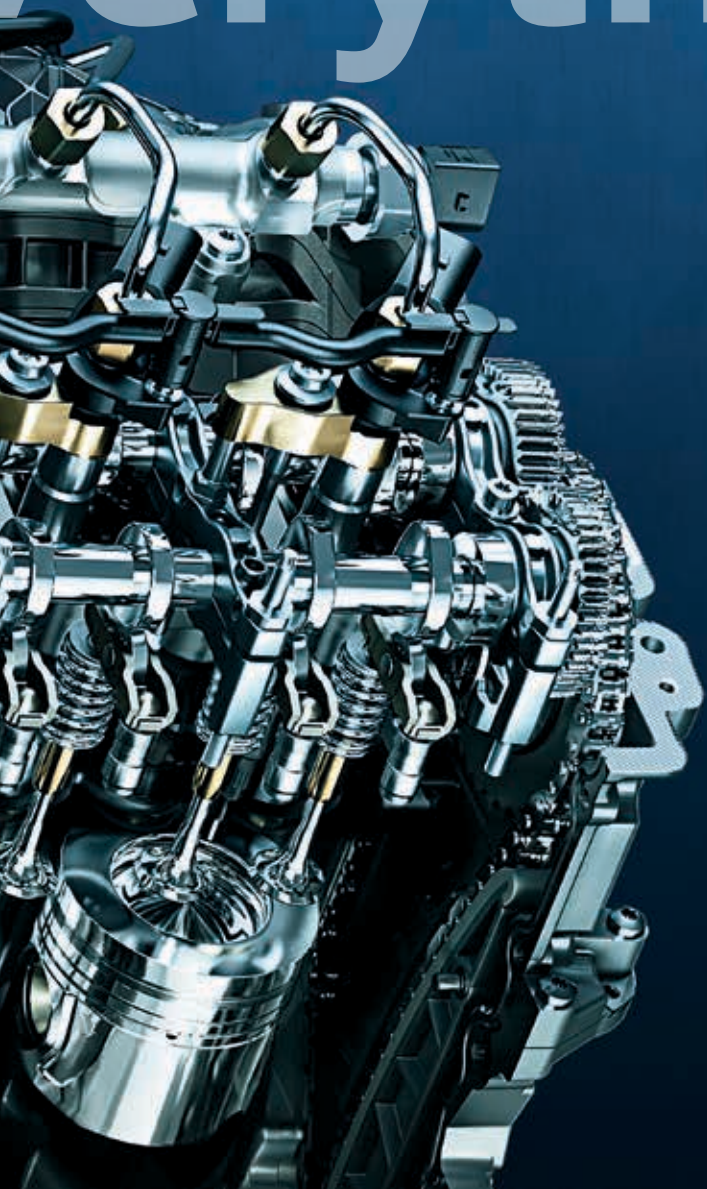
New Volkswagen V6 3.0 l TDI engine with up to 190kW of power and torque up to 580Nm.

Powerful like no other: the 6-cylinder turbodiesel engine with a 3.0 l displacement has more than enough power reserves even in the most demanding situations.

For even more power, an overboost function is available, briefly increasing performance by a further 15kW for the 165kW models or an additional 10kW for the 190kW model.



everything.



3.0 | TDI Fuel Economy.

Single turbo V6 with average fuel consumption from 7.3l/100km combined.

2.0 | TDI Fuel Economy.

Twin turbo with average fuel consumption from 8.0-8.5l/100km combined. Not illustrated.

V6

8-speed automatic gearbox



01 Optional 8-speed automatic gearbox and permanent 4MOTION all-wheel drive.

The new Amarok is the only vehicle to offer the unique combination of comfortable 8-speed automatic gearbox with the iconic torsen differential and permanent 4MOTION all-wheel drive. The first gear is designed for off-road driving, whereas the eighth gear is optimised for economical driving at low engine speeds.



01 Side slope angle. The broad wheelbase of the Amarok provides enormous stability even when driving along slopes with a 50° incline.^{1,2}

02 High-climbing ability. The Amarok handles 100% grades with a payload of up to 1 tonne.¹

Off-road ABS (not illustrated). Once activated, the wheels lock when braking on loose surfaces with a larger interval, essentially creating a wedge which significantly reduces the braking distance. This noticeably increases the driving safety.

03 Permanent 4MOTION all-wheel drive. Standard equipment on all models. This 4x4 drive system with a self-locking Torsen middle differential is unique in the ute segment and provides a balanced 40:60 distribution for all on-road and off-road tasks.³

1) The values vary depending on the equipment and engine. 2) The incline on the left side is 49.7° and 50.8° on the right side. Please bear in mind that these figures result from static calculations. 3) The distribution varies depending on the surface. Please contact your local Volkswagen Commercial Vehicles dealer for details of the standard equipment and optional extras applicable in your country.

GO A

100% incline, 50° gradient and outstanding off-road ABS.

Asphalt, earth, gravel. In the new Amarok you will experience the pinnacle of exclusive driving comfort on almost any terrain. It combines high ground clearance with the best body stability along with the proven 4MOTION all-wheel drive.

This vehicle also comes into its own on the road, for example by significantly increasing traction when cornering.

anywhere







Fully Loaded.

02 The widest load platform. No other diesel ute provides so much space between the wheel housings: the loading width of 1,222 mm even enables standard pallets to be loaded crosswise. The spacious cargo box with a 2.52 m² load surface features convincing dimensions – such as the 508 mm high side panels and the low loading sill height of 780 mm.

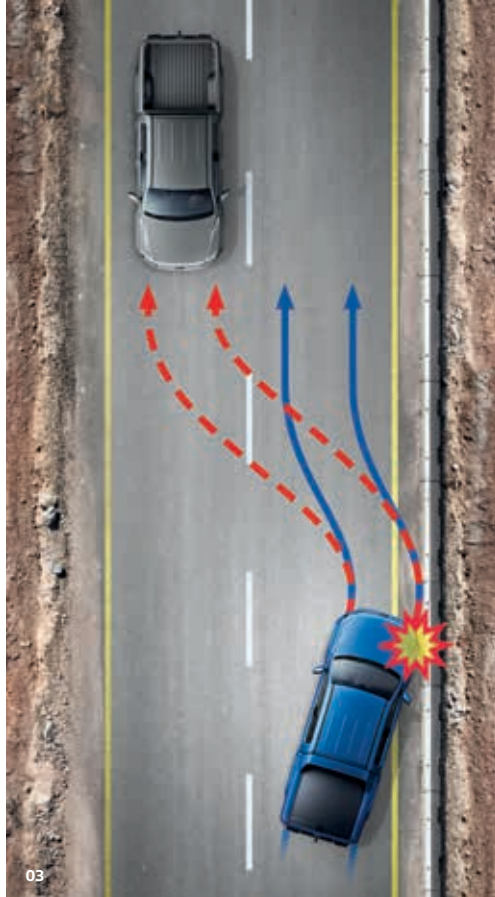


01

01 The smoothest moving tailgate. It can be loaded with up to 200 kg and can serve as a load platform extension.



02



Safety systems.

03 New Automatic Post-Collision Braking System. Triggers braking after a collision, with the aim of preventing secondary collisions. After a short delay, the vehicle begins phased braking action down to 10 km/h.



Electronic Stabilisation Programme (not illustrated). Prevents under- or over-steering via targeted braking of individual wheels.



04 Fog lights with optionally integrated static cornering light. Ensures optimal visibility in poor weather conditions. The fog light nearest to the corner illuminates the roadside when turning.



Driver assistance systems.

Hill Start Assist (not illustrated). Prevents the vehicle from rolling back on inclines and makes it easier to start off on uphill slopes.



Hill Descent Assist (not illustrated). Allows you to drive down slopes in a safe, controlled way at walking speed by governing the engine speed and applying the brakes, if necessary.



05 ParkPilot. Emits audible warnings when obstacles are detected in front of or behind the vehicle when parking, and provides a visual display.



06 "Rear View" reversing camera. Simplifies parking by showing a limited view of the area behind the vehicle on the display. Static guidelines facilitate the parking process*.



Cruise control (not illustrated). As of a speed of 30 km/h, it maintains the desired speed depending on uphill and downhill inclines.

*Features not standard on all models.





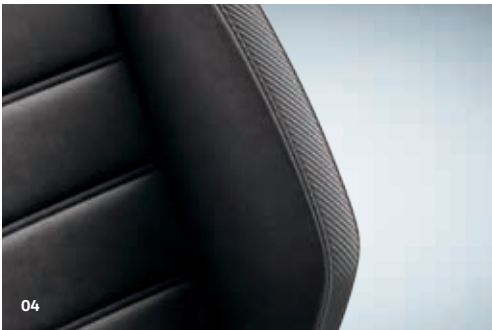
01



02



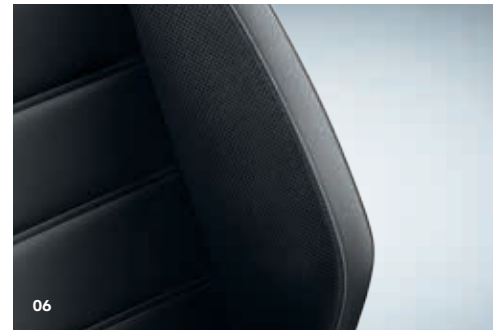
03



04



05



06

Seat upholstery.

- 01 "Austin" cloth seat upholstery in Titanium Black
- 02 "Kemisu" cloth seat upholstery in Palladium Black
- 03 "Salipra" cloth seat upholstery in Navy Blue / Titanium Black
- 04 "Alcantara" seat upholstery in Titanium Black
- 05 "Vienna"¹ leather seat upholstery in Palladium Black
- 06 "Nappa"² leather seat upholstery in Black with seams in Ceramic Black

Wheels.

- 07 "Posadas" alloy wheel, 17 inch. With 255/60 R 17 tyres.
- 08 "Manaus" alloy wheel, 18 inch. With 255/60 R 18 tyres.
- 09 "Milford" alloy wheel, 19 inch. With 255/55 R 19 tyres.
- 10 "Cantera" alloy wheel, 19 inch. With 255/55 R 19 tyres.
- 11 "Talca" alloy wheel, 8.0 J x 20. With 255/50 R 20 tyres.



07



08



09



10



11

1) Centre seat panel and inner seat bolsters in "Vienna" leather. The "Vienna" upholstery is a leather seat upholstery with leatherette sections and two tone colour. 2) Centre seat panel and inner seat bolsters in "Nappa" leather. The illustrations on this double page can only be regarded as a general guide. The printing process cannot render the colours with absolute accuracy. Please contact your local Volkswagen Commercial Vehicles dealer for details of the standard equipment for each Amarok model in New Zealand.

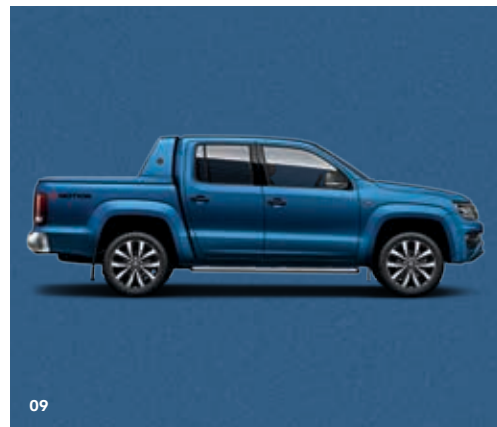


Paint finishes.

- 01 Candy White Solid
- 02 Mojave Beige Metallic
- 03 Reflex Silver Metallic
- 04 Tornado Red Solid
- 05 Ravenna Blue Metallic¹
- 06 Indium Grey Metallic
- 07 Starlight Blue Metallic
- 08 Chestnut Brown Metallic²
- 09 Deep Black Pearl Effect
- 10 Ravenna Blue Matte¹
- 11 Indium Grey Matte¹



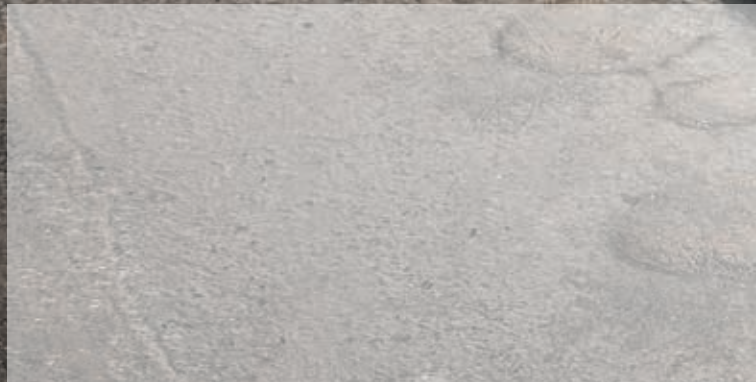
1) Only available on Amarok Aventura
2) Only available on Amarok ex Hanover
The illustrations on this double page can only be regarded as a general guide. The printing process cannot render the colours with absolute accuracy.







Amarok80 - Printed in New Zealand
Information is subject to change without notice · Issue: March 2019
www.volkswagen.co.nz



Some of the vehicles shown in this catalogue are equipped with options at extra charge. The data given here on equipment and technical data is based on information available at the time of going to print. Your local Volkswagen Commercial Vehicles dealer will be pleased to provide you with full New Zealand specifications upon request. Call 0800VOLKSWAGEN or visit www.volkswagen.co.nz

4MOTION®, TDI® and BlueMotion Technology® are registered trademarks of Volkswagen AG and other companies in the Volkswagen Group in Germany and in other countries. The fact that a trademarked name is not shown with an ® sign in this document cannot be interpreted to mean that this is not a registered trademark, and/or that it may be used without prior approval in writing from Volkswagen AG.

Your Volkswagen Commercial Vehicles Dealer