



4320 Aerotech Center Way  
Paso Robles, CA 93447  
Telephone: (800) 350-2223 Fax: (805) 238-4201  
PAGE 1 OF 2 Page Rev. Date: 5-13-20  
P/N: 712532

## TOYOTA L/C 4 SPEED TRANSMISSION TO CHEVY V8 & STRAIGHT 6 ENGINES

### KIT CONSISTS OF:

No.	Qty	Part No.	Description
1.	1	712532-BLK	ALUMINUM BELLHOUSING
2.	1	712532-PLT	DUST COVER
3.	1	716154	PILOT BUSHING
4.	1	716314	CLUTCH RELEASE BEARING
5.	5	722523	1/4" FLAT WASHER
6.	9	722540	1/4"-20 x 1/2" LG SELF TAPPING SCREWS
7.	6	723704	3/8" LOCK WASHER
8.	6	723724	H.H.C.S. 3/8"-16 x 1-3/4" LG
9.	2	723725	H.H.C.S. 3/8"-16 x 2" LG
10.	4	724349	H.H.C.S. 7/16"-14 x 1-1/2" LG

### INSTALLATION INSTRUCTIONS:

This bellhousing will provide you with the necessary bolt patterns to bolt the Land Cruiser 4 speed transmissions to Chevy Straight 6 and V8 engines. The bellhousing is not compatible with transmissions used in diesel vehicles.

The bellhousing will bolt directly to the GM block locating over the factory dowel pins. The bellhousing must be used with engines that have starters that bolt to the engine block. This bellhousing cannot be used with the early V8 blocks that had starters mounting into the bellhousing. The bellhousing has provisions for mounting the original slave cylinder, clutch release arm and ball pivot. Check the pilot bearing engagement before final assembly to make sure the proper engagement is made with the pilot bushing. The stock Toyota bellhousing inspection cover will need to be trimmed and mounted to the bottom of the new bellhousing. Self tapping screws have been provided. The flywheel inspection cover will need to be used in conjunction with this Toyota cover.

This conversion must use the large 168 tooth flywheel along with a special Centerforce pressure plate. The special pressure plate used with the enclosed release bearing, will provide a clutch that will be compatible with your stock slave cylinder. Any variation to the recommended parts, is at the customers discretion & is not recommended. The parts that must be used are:

- 11" Pressure Plate, No. CF165473S
- 11" Clutch Disc, No. 383735
- Release Bearing, No. 716314 or CF046 (Included in Kit)

The new release bearing must be pressed onto the original Toyota release collar. On early 1974 vehicles, it may be necessary that you purchase a new collar due to a variation in the early 4 speed transmissions. Collar part number Toyota 31231-60070.

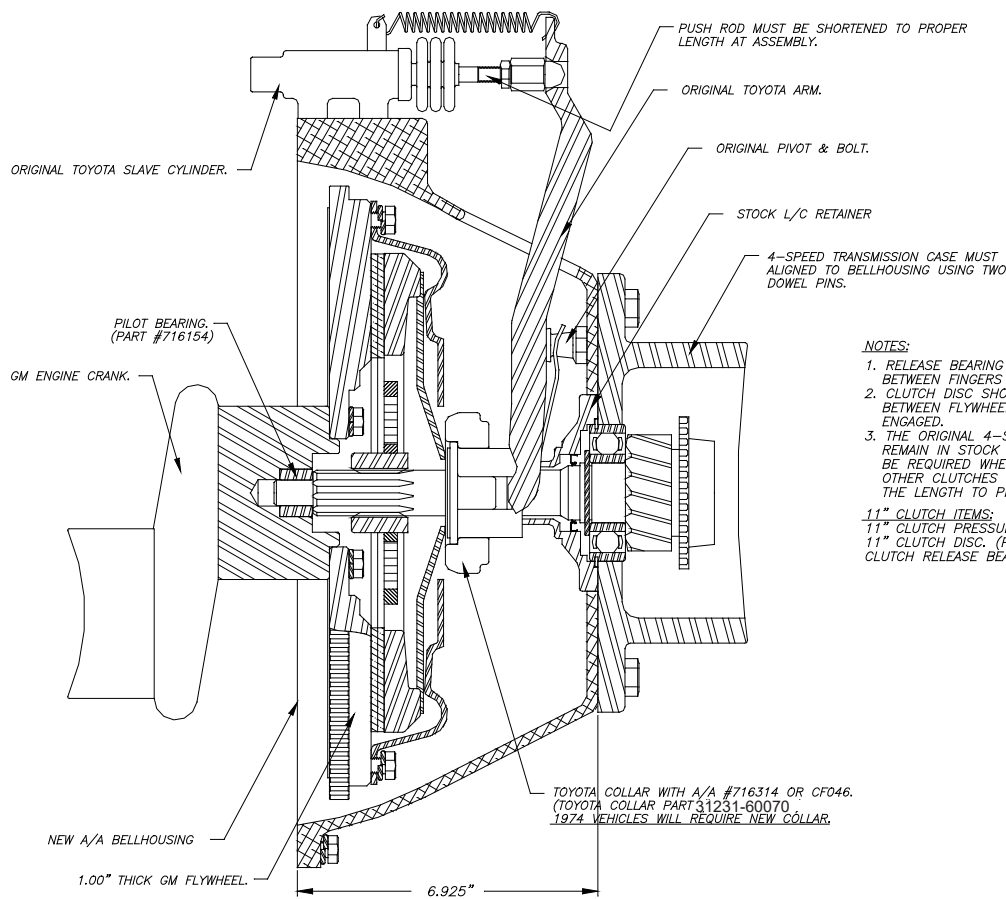
It is very critical that the transmission index onto the new bellhousing using the original 2 Toyota stock dowel pins. It may be necessary to slightly modify the transmission opening for necessary clearance of the front bearing retainer. The slave cylinder push rod will need to be shortened and adjusted for use with the new bellhousing. The original Toyota boot can be retained.

Vehicles that have the slave cylinder mounted on the driver's side will be required to re-route the hydraulic line to the passenger side. It may be easier to simply purchase the new line from Toyota.

**SPECIAL NOTE:** The components packaged in this kit have been assembled and machined for specific type of conversions. Modifications to any of the components will void any possible warranty or return privileges. If you do not fully understand modifications or changes that will be required to complete your conversion, we strongly recommend that you contact our sales department for more information. This instruction sheet is only to be used for the assembly of Advance Adapter components. We recommend that a service manual pertaining to your vehicle be obtained for specific torque values, wiring diagrams and other related equipment. These manuals are normally available at automotive dealerships and parts stores.

## TOYOTA L/C 4 SPEED TRANSMISSION TO CHEVY V8 & STRAIGHT 6 ENGINES

Vehicles produced from April 1985 and later were equipped with a shorter factory release arm.  
This shorter arm must be replaced with an earlier longer version Land Cruiser release arm.



**SPECIAL NOTE:** The components packaged in this kit have been assembled and machined for specific type of conversions. Modifications to any of the components will void any possible warranty or return privileges. If you do not fully understand modifications or changes that will be required to complete your conversion, we strongly recommend that you contact our sales department for more information. This instruction sheet is only to be used for the assembly of Advance Adapter components. We recommend that a service manual pertaining to your vehicle be obtained for specific torque values, wiring diagrams and other related equipment. These manuals are normally available at automotive dealerships and parts stores.