

## KVF-TDHS Series 150W

Whole Family: KVF-XXXXX-TDHS 12V/ 24VDC - [ 30W 36W 60W 100W 150W ]



RoHS



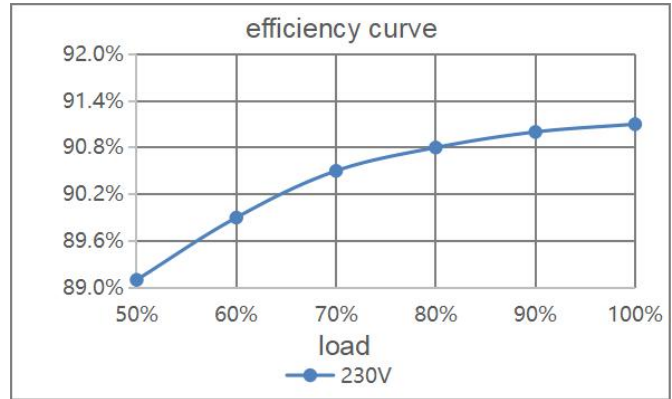
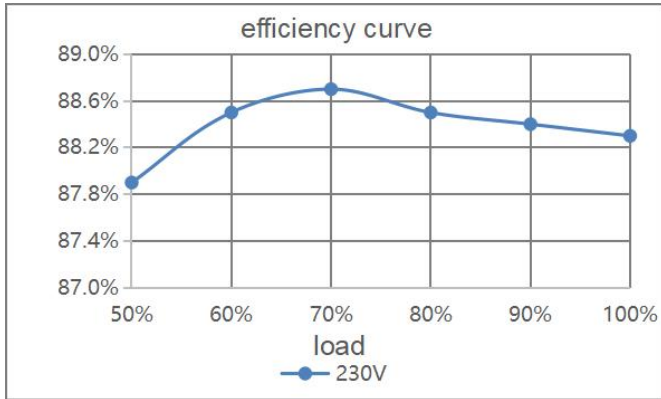
### Features

|                         |                                                                                |
|-------------------------|--------------------------------------------------------------------------------|
| Output:                 | Constant Voltage                                                               |
| Range:                  | 200-240VAC                                                                     |
| PFC design:             | Built-in active PFC function                                                   |
| Efficiency:             | Up to 92%                                                                      |
| Protections:            | Short circuit/ over load/ over temperature                                     |
| Heat dissipation:       | Cooling by free air convection                                                 |
| Waterproof performance: | IP20                                                                           |
| Dimming function:       | <u>Phase dimming</u> : work with leading edge and trailing edge, TRIAC dimmers |
| Dimming range:          | 0-100%                                                                         |
| Application:            | Suitable for the application of LED lighting                                   |
| Warranty:               | 5 years warranty                                                               |
| PWM Output Frequency    | 20KHz ( Flicker-free)                                                          |

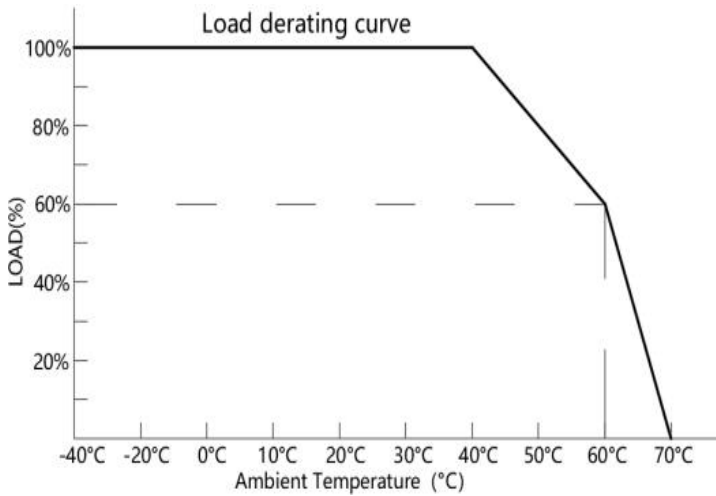
**Phase cut /Triac dimmable driver - PWM output Dimmable LED driver 150W**
**Specification**

| Model           |                                                                                                                                                                                       | KVF-12150-TDHS                                                                           | KVF-24150-TDHS |
|-----------------|---------------------------------------------------------------------------------------------------------------------------------------------------------------------------------------|------------------------------------------------------------------------------------------|----------------|
| Certificate     |                                                                                                                                                                                       | ENEC / SAA / CE / CB / RoHS / Reach                                                      |                |
| Output          | DC Voltage                                                                                                                                                                            | 12V                                                                                      | 24V            |
|                 | Voltage Tolerance                                                                                                                                                                     | ±0.5V                                                                                    |                |
|                 | Voltage Regulation                                                                                                                                                                    | ≤2%                                                                                      | ≤1%            |
|                 | Rated current                                                                                                                                                                         | 12.5A                                                                                    | 6.25A          |
|                 | Rated power                                                                                                                                                                           | 150W                                                                                     |                |
|                 | Load Regulation                                                                                                                                                                       | ≤0.5%                                                                                    |                |
| Input           | Voltage Range                                                                                                                                                                         | 200-240VAC                                                                               |                |
|                 | Frequency Range                                                                                                                                                                       | 47 - 63Hz                                                                                |                |
|                 | Power Factor @ full load                                                                                                                                                              | ≥0.95@230VAC                                                                             |                |
|                 | THD(Typ.) @ full load                                                                                                                                                                 | ≤20%                                                                                     |                |
|                 | Efficiency @ full load                                                                                                                                                                | 90%                                                                                      | 92%            |
|                 | AC Current (Max.)                                                                                                                                                                     | 0.95A@200VAC                                                                             |                |
|                 | Inrush Current (Typ.)                                                                                                                                                                 | 47.5A,312us@50%Ipeak 230VAC                                                              |                |
| Leakage current | <0.5mA                                                                                                                                                                                |                                                                                          |                |
| Protection      | Short Circuit                                                                                                                                                                         | Hiccup mode, recovers automatically after fault condition is removed                     |                |
|                 | Over Load                                                                                                                                                                             | ≤120% Hiccup mode, recovers automatically after fault condition is removed               |                |
|                 | Over temperature                                                                                                                                                                      | Shell surface temp.100°C±10°C shut down o/p voltage, automatically recover after cooling |                |
| Environment     | Working TEMP.                                                                                                                                                                         | -40~+60°C (see below derating curve)                                                     |                |
|                 | Working Humidity                                                                                                                                                                      | 20 - 90%RH non-condensing                                                                |                |
|                 | Storage TEM.,Humidity                                                                                                                                                                 | -40 - +80°C,10 - 95% RH non-condensing                                                   |                |
|                 | TEMP.coefficient                                                                                                                                                                      | ±0.03%/°C(0 - 50°C)                                                                      |                |
|                 | Vibration                                                                                                                                                                             | 10~500Hz, 2G 10m in./1 cycle, period for 60min. each along X,Y,Z axes                    |                |
| Safety & EMC    | Safety standards                                                                                                                                                                      | EN61347-1 EN61347-2-13 EN62493 (EU)                                                      |                |
|                 | Withstand voltage                                                                                                                                                                     | I/P-O/P:3.75KVAC (EU)                                                                    |                |
|                 | Isolation resistance                                                                                                                                                                  | I/P-O/P:100MΩ / 500VDC / 25°C / 70%RH                                                    |                |
|                 | EMC Emission                                                                                                                                                                          | EN55015 EN61000-3-2 EN61000-3-3 (EU)                                                     |                |
| Others          | Net Weight                                                                                                                                                                            | 0.37Kg                                                                                   |                |
|                 | Dimension                                                                                                                                                                             | 367.8*30*22.5mm(L*W*H)                                                                   |                |
|                 | Packing                                                                                                                                                                               | 385*270*185mm 50pcs /CTN 19.9Kg/CTN                                                      |                |
| Notes           | 1. All parameters NOT specially mentioned are measured at 230 VAC input, rated load and 25°C of ambient temperature.<br>2. Tolerance: includes set up tolerance and load regulation . |                                                                                          |                |

### Efficiency Curve (efficiency vs output load)



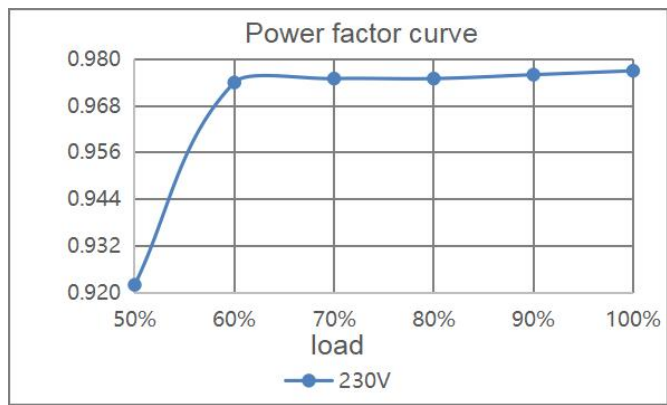
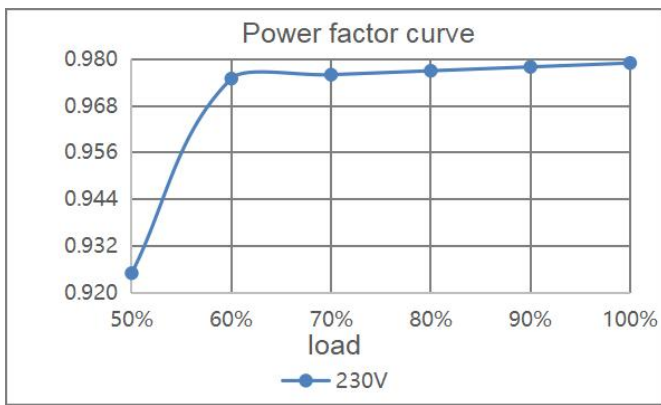
### Derating Curve (output load vs TEMP.)



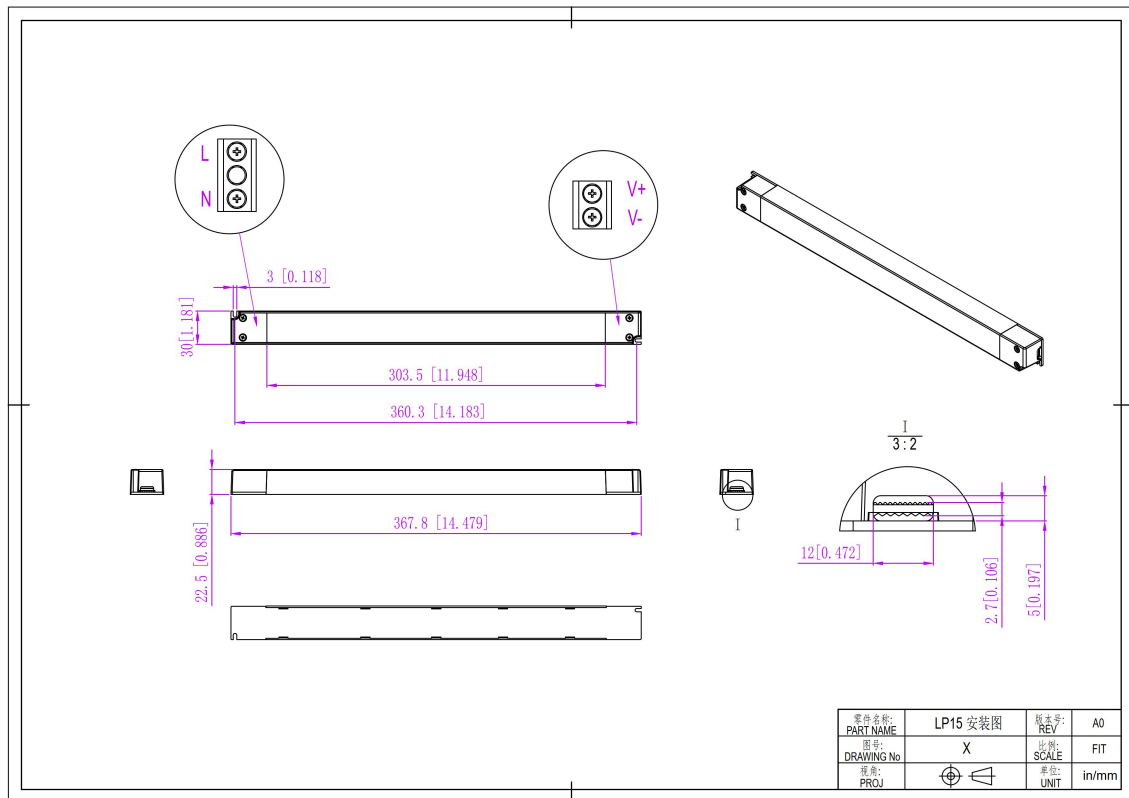
1. To extend their life, please refer to the Derating Curve and derate according to the temperature.
2. Please note that the rise in temperature of LED fixtures over a long period of time will cause their power to rise. Therefore, we recommend the power supply to reserve a certain amount of load to avoid overloading.

### Power Factor Curve

Phase cut /Triac dimmable driver - PWM output Dimmable LED driver 150W



Mechanical Specification



12V&24V Version

1. Input with DG126 terminals 3P:Live Wire AC (L), Neutral Wire AC(N) .
2. Output LED SEC with DG126 terminals 2P: output Positive (LED+), output negative (LED-). Connected to LED Lamps.
3. Please make sure you connect these correctly otherwise your product will not function correctly and could be damaged.

Warm tips:

1. Suggested wire diameter : Input 0.75-2.0mm<sup>2</sup>; Output 0.5-2.0mm<sup>2</sup>.

Phase cut /Triac dimmable driver - PWM output Dimmable LED driver 150W

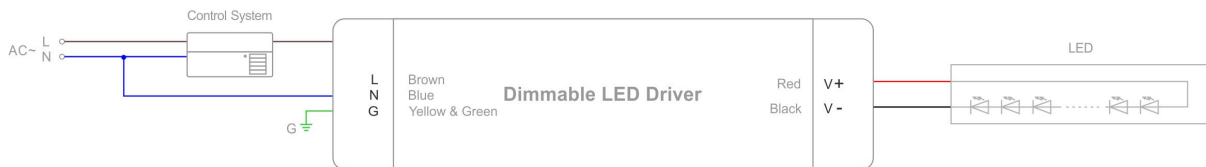
2. Any other requests for, we can customized.

### Dimming Operation and Connecting Diagram

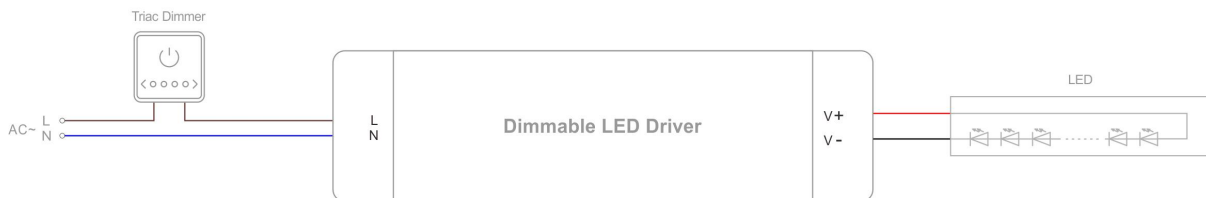
#### TRIAC/Phase cut dimming

1. The Pulse-Width Modulation (PWM) of output voltage can be adjusted through input terminal of the AC phase line(L) by connection a phase /Triac dimmer or lighting system.
2. Working with leading edge and trailing edge, TRIAC dimmers.
3. Min. loading is about 10%.
4. Please try to use dimmers with power at least 1.5 times as the output power of the driver.

#### Triac



#### Triac



### Instruction

1. This driver should be installed by qualified and professional person.
2. Please make sure the driver is installed with adequate ventilation around it to allow for heat dissipation.



Phase cut /Triac dimmable driver - PWM output Dimmable LED driver 150W

---

3. Ensure that wiring is correct before test in order to avoid light and power supply damage.
4. If driver Cannot work normally, don't maintain privately.

Have any questions, please contact Zuhai Shengchang.

Please visit our website or contact us for more information! [www.scpower.net.cn/en](http://www.scpower.net.cn/en)