

SOCOGHA - SOCOGHA THIXO

HYDROALCOHOLIC GEL

Technical Data Sheet

SOCOGHA & SOCOGHA THIXO are part of **SOCOMORE** range for disinfection (www.socosafe.fr)
SOCOGHA & SOCOGHA are hydroalcoholic gels for the hygienic treatment and disinfection of the hands by friction.

SOCO/SAFE

SOCOGHA THIXO is the thixotropic version of **SOCOGHA**, with a higher viscosity. They are disinfectant biocides type TP1 for human hygiene.

Ingredients of natural origin: +99%

Hydroalcoholic thick gel SOCOGHA - SOCOGHA THIXO	Standards	Time	Strain
Bactericidal	EN 1276	30 s	Staphylococcus aureus subsp. aureus Pseudomonas aeruginosa Enterococcus hirae Escherichia coli K12
Bactericidal	EN 13727	30 s	Staphylococcus aureus subsp. aureus Pseudomonas aeruginosa Enterococcus hirae Escherichia coli K12
Bactericidal	EN 1500	1 min	Escherichia coli K12
Yeasticidal	EN 13624	30 s	Candida albicans
Fungicidal	EN 13624	1 min	Candida albicans Aspergillus brasiliensis
Virucidal	EN 14476 A2+	1 min	Coronavirus (TEGV) Poliovirus Adénovirus Norovirus murin

Active ingredient (see the label) :

- ETHANOL (CAS 64-17-5) at 68% (v/v)

	HYDROALCOHOLIC GEL SOCOGHA	HYDROALCOHOLIC THICK GEL SOCOGHA THIXO
950 L containers	X	
5 L cans to refill small empty containers	X	
Boxes of 6 pump containers (500 mL)	X	

1/3

SOCOGHA_GEL_HYDROALCOOLIQUE_EN2021-02-07PT-FS

socomore

www.socomore.com

Asia +86 21 5813 1133 Europe Middle East Africa +33 (0)2 97 63 05 01 North America +1 (817) 335-1826 South America +55 11 96660-7169

	HYDROALCOHOLIC GEL SOCOGHA	HYDROALCOHOLIC THICK GEL SOCOGHA THIXO
Boxes of 24 containers (100 mL) with a valve cap	X	
Boxes of 6 squeeze bottles (500 mL)		X
Boxes of 500 single sachet 3 mL	X	

Worldwide availability subject to local regulations.



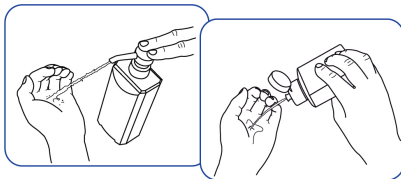
Design non défini

DIRECTIONS FOR USE

Hydroalcoholic gel is a ready-to-use product.

Hygienic disinfection: Rub according to standard EN 1500: DO NOT RINSE, DO NOT DRY

Dispense the necessary amount (about 3-5 ml) to keep the hands wet during friction (1 minute).



<p>Carry out hand rubbing according to the successive steps:</p> <ol style="list-style-type: none"> 1. Widely rub your palms together 2. Rub the back of each hand one after the other 3. Rub between fingers 4. Rub the back of your fingers against the palm of the other hand 5. Rub around the thumbs 6. Rub fingertips and nails 7. Rub wrists 8. Rub until your hands are completely dry (1 minute). <p>DO NOT RINSE, DO NOT DRY</p>				

To refill empty containers with SOCOGHA hydroalcoholic gel refills, refer to the tutorial online.

Containers must be cleaned and recharged with similar products, **do not mix cleaning or disinfecting products with each other, especially bleach and descaler**. For unpackaged products, clearly state the nature of the content on a label.

TECHNICAL CHARACTERISTICS

Appearance Colorless cloudy gel
Specific gravity (at 20°C / 68°F) 0.88
Odor Alcohol
Flash point (ISO 13736) 17°C / 63°F
Viscosity (Brookfield according to ISO 2555) SOCOGHA - 2500 cps / SOCOGHA THIXO - 8500 cps

PRECAUTIONS FOR USE AND STORAGE

DANGER: Highly flammable liquid and vapour. Causes serious eye irritation. Keep out reach of children. Keep away from heat, hot surfaces, sparks, open flames and other ignition sources. Keep container tightly closed. Avoid contact with the eyes. If eye irritation persists: Get medical advice/attention. In case of fire, use a CO2 fire extinguisher to extinguish. Store in a well-ventilated place. Keep cool. Dispose of contents/container to hazardous or special waste collection point. Safety data sheet available on request.

Use this disinfectant safely. Always read the label and product information before use.

Store the product at ambient temperature (15 to 25°C / 41° to 77°F), in closed original containers.

Shelf life : 2 years.

For more information regarding the danger of the product, please consult the product safety data sheet according to local regulation.

This technical data sheet replaces and cancels the previous one.

The above details have been compiled to the best of our knowledge. They have, however, an indicative value only and we therefore make no warranties and assume no liability in connection with any use of this information, particularly if a third party's rights are affected by the use of our products. The above information has been compiled based upon tests carried out by SOCOMORE. All data is subject to change as Socomore deems appropriate. The data given is not intended to substitute for any testing you must conduct in order to determine the suitability of the product for your particular purposes. Please check your local legislation applicable to the use of this product. Should you need any further information please contact us.