



**AKSELOS MODELER  
INSTALLATION GUIDE**

## Trademarks and Legal Notices

Akselos, is a commercial trademark or registered trademark of Akselos SA or its subsidiaries. Use of any Akselos or its subsidiaries trademarks is subject to their express written approval. Other company, product, and service names may be trademarks or service marks of their respective owners. Akselos Modeler and this documentation may be used or reproduced only in accordance with the terms of the software license agreement signed by the customer, or, absent such an agreement, the then current software license agreement to which the documentation relates.

Akselos makes no representations about the suitability of the information contained in this document and related graphics and its software. Akselos and its subsidiaries shall not be responsible for the consequences of any errors or omissions that may appear in this documentation. This document is provided "as is" without warranty of any kind and is subject to change without notice. The entire risk arising out of its use remains with the recipient. In no event shall Akselos and/or its respective suppliers be liable for any direct, consequential, incidental, special, punitive or other damages whatsoever (including without limitation, damages for loss of business profits, business interruption, or loss of business information), even if Akselos has been advised of the possibility of such damages.

# Table of Contents

<b>AKSELOS MODELER INSTALLATION GUIDE</b>	<b>3</b>
PURPOSE	3
TIME TO COMPLETE	3
HARDWARE AND SOFTWARE REQUIREMENTS	3
<b>Akselos Integra architecture diagram</b>	<b>4</b>
<b>INSTALLATION STEPS</b>	<b>5</b>
STEP 1 - Register on Akselos Dashboard and Obtain Access to Your Organization	5
STEP 2 - Download and Install Akselos Modeler	5
STEP 3 - Launch Akselos Modeler from Windows Desktop	8
STEP 4 - Ensure Internet Access	9
STEP 5 - Setup Akselos Data Directory	9
STEP 6 - Download Collections	11
STEP 7 - Open Model and Solve	13
<b>CHECK FOR UPDATES</b>	<b>14</b>
<b>Support</b>	<b>15</b>

# AKSELOS MODELER INSTALLATION GUIDE

## PURPOSE

This document shows you how to install the Akselos Modeler software on Microsoft Windows.

## TIME TO COMPLETE

Approximately 5 minutes in case of first installation. The timing depends on the speed of the machine processor and speed of writing data to disk.

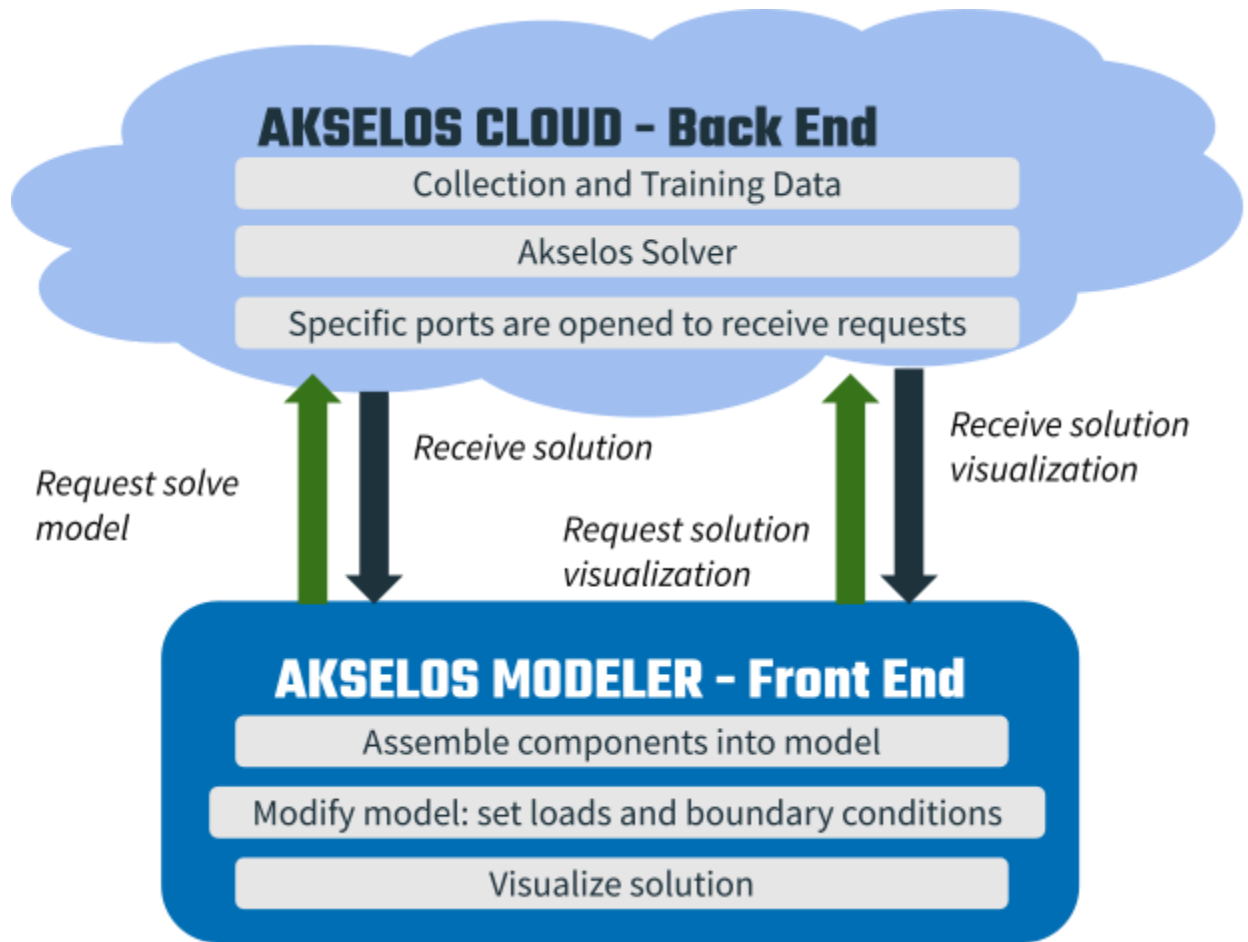
In case of upgrading from a previous version, it will take a few extra minutes to remove old software data.

## HARDWARE AND SOFTWARE REQUIREMENTS

The requirements to install the software are:

- Minimum 4 GB of physical memory. Note that to be able to open large models, it is recommended to have 8 GB of physical memory or more.
- 500 MB of free disk space to store the software. Additional disk space may be required depending on the size of the model used. A large model may require 5-10 GB disk space.
- Microsoft Windows 7, 8, 10 or 11 is required. Windows 11 is recommended.
- Windows 64-bit is required.
- Administrator privileges are required during the installation.
- Akselos Modeler requires access to the internet for the processes Akselos\_modeler.exe and hg.exe.

## Akselos Integra architecture diagram



This Installation Guide is for Akselos Modeler, the Front End portion of the figure above.

# INSTALLATION STEPS

## STEP 1 - Register on Akselos Dashboard and Obtain Access to Your Organization

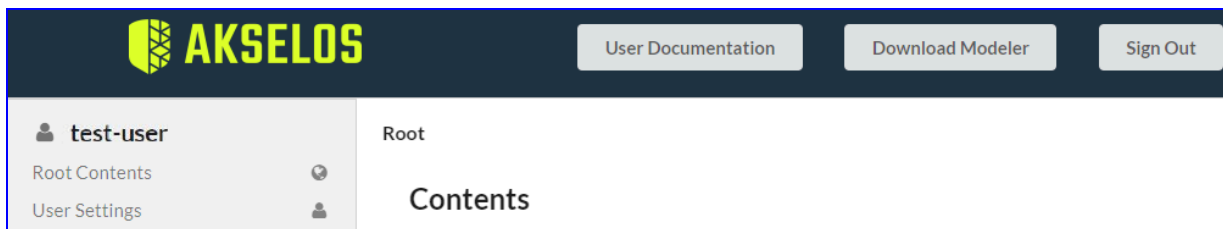
Go to Akselos Dashboard ([dashboard.akselos.com](https://dashboard.akselos.com)) in a web browser and create a new account.

After registering, you must be added to an organization on the Dashboard. If your organization does not already have an account on Akselos Dashboard, contact Akselos support to create a new account for your organization; otherwise, ask an admin user from your organization's account to grant access for your username.

## STEP 2 - Download and Install Akselos Modeler

Akselos Modeler is a software application that runs locally on your computer and allows you to set up models, perform solves (by communicating with Akselos Cloud), and visualize/post-process results.

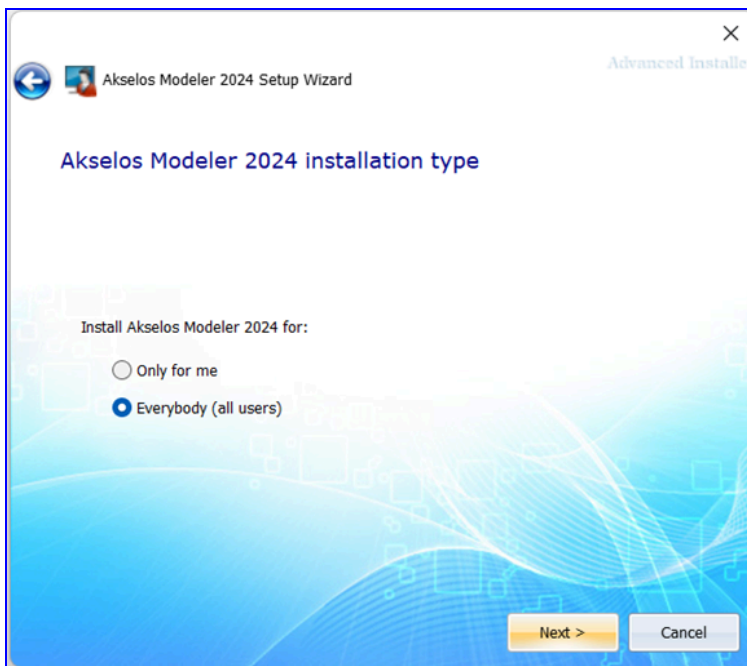
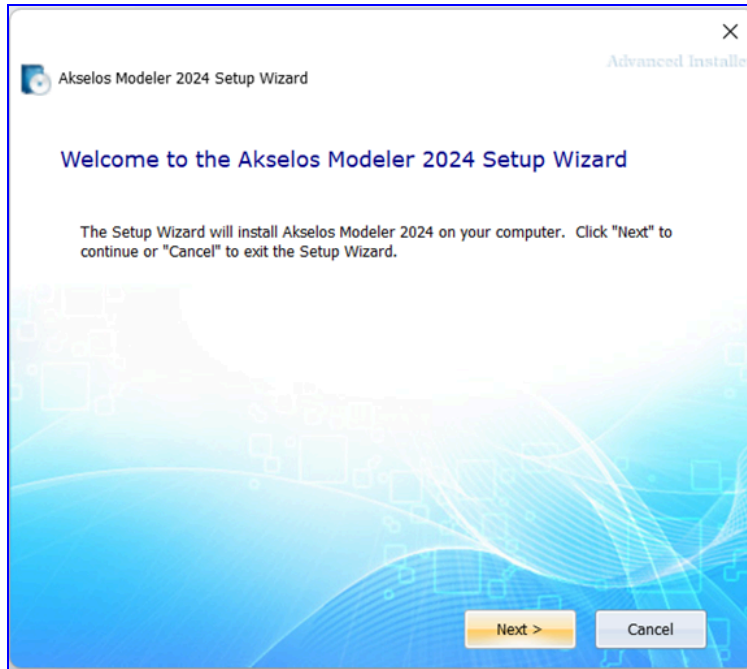
After registering and being granted permission to access your organization on Akselos Dashboard, log in and use the Download Modeler link to download Akselos Modeler installer executable. If you have not been granted access to an organization these buttons will not be available.



After downloading, install Akselos Modeler by running the installer executable.

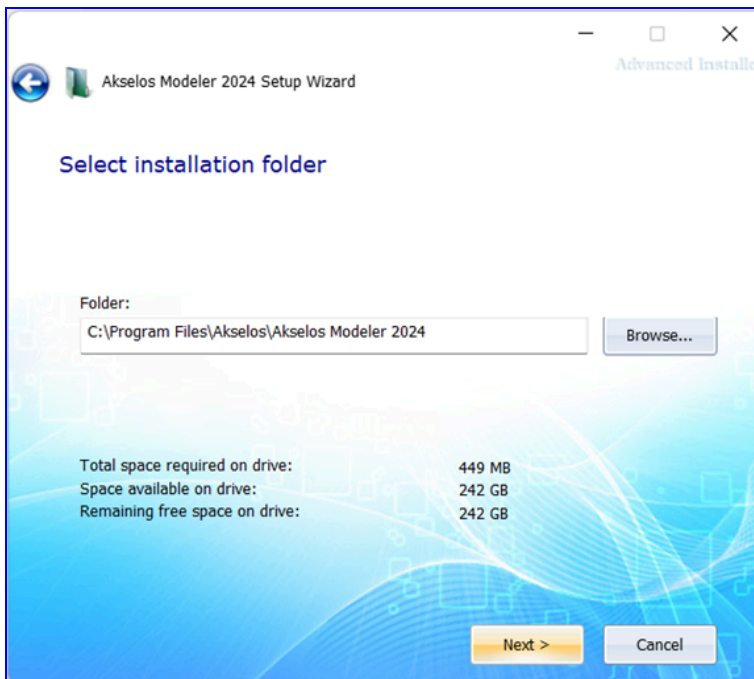
Name	Date modified	Type	Size
Today Akselos_Modeler_2024.1.1.1_Installer.exe	1/26/2024 10:49 AM	Application	110,441 KB

This will open the Setup Wizard. Please follow the steps shown below to complete the installation:

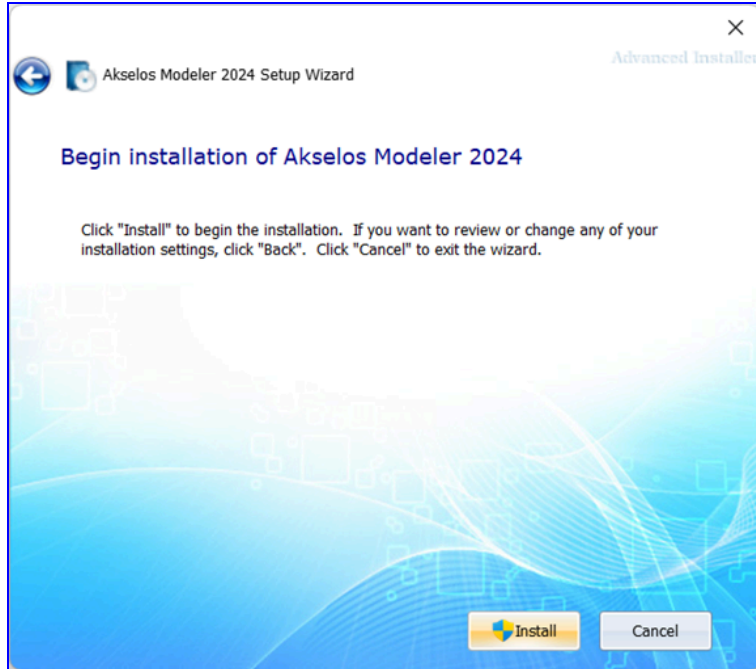


There are two options available if you more than one account on your local machine:

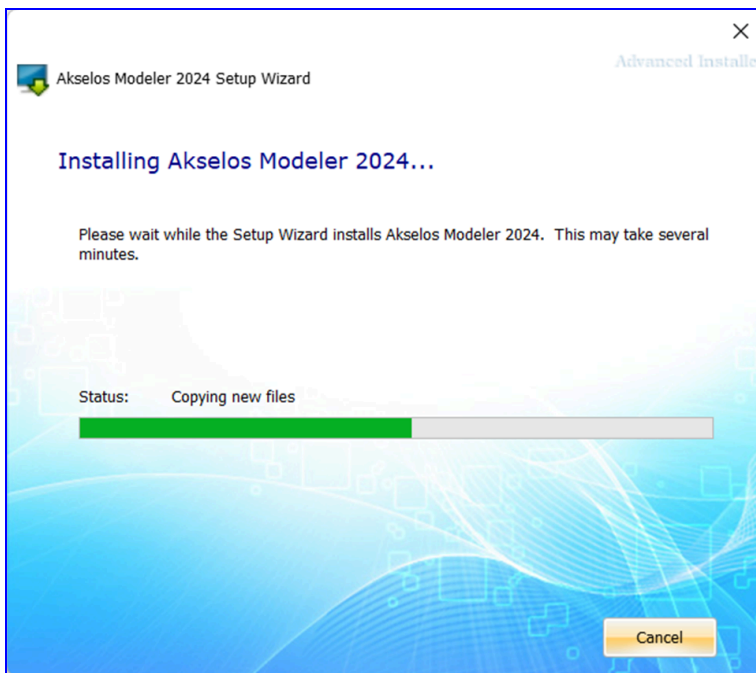
- Only for me: Install and only available in your account folder, does not require admin permissions (recommended if you are not the administrator)
- Everybody: Install in the Program Files folder by default, available for all users. Require admin permissions.

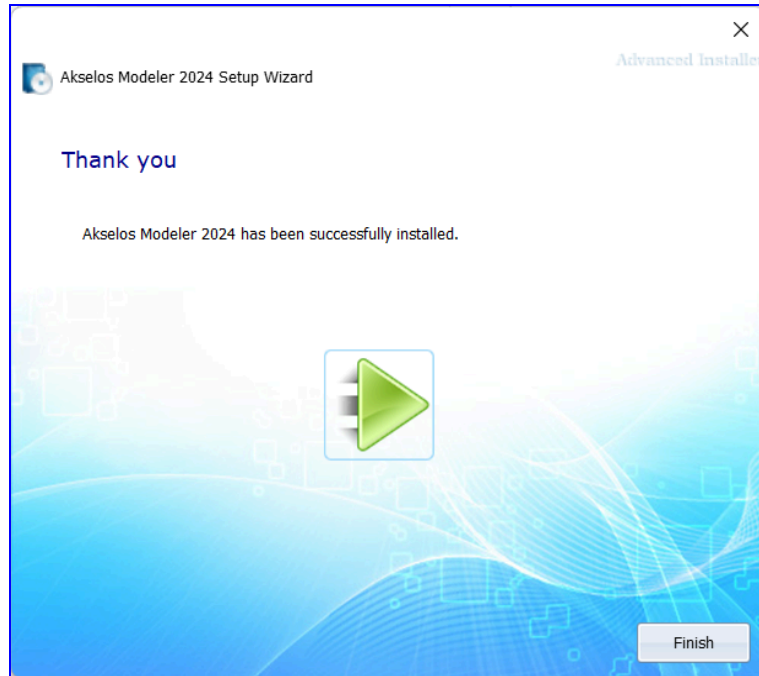






After clicking the **Install** button in the above picture, a Windows **“User Account Control”** dialog may appear to confirm that you allow the installer to install the files required by Akselos Modeler. If you are an Administrator just need to choose **Yes**. If you are not in an Administrator group, you will be asked to enter the password of an administrator account to be able to proceed.





### STEP 3 - Launch Akselos Modeler from Windows Desktop

After successfully installing the software, an icon should be created on your Desktop. Use this to launch Akselos Modeler.

### STEP 4 - Ensure Internet Access

Akselos Modeler connects to **cloud.akselos.com** and **dashboard.akselos.com** on port **443**. Ask the network administrator to ensure such connections are allowed. The processes that will perform these connections are **Akselos\_modeler.exe** and **hg.exe**. Any firewall on the local machine should be configured to allow connections from these processes. The connections use the standard TLS protocol for secure communications.

In case where proxy server is used, in order to get Akselos Modeler connections work, below settings need to be set:

- The proxy must support HTTPS.
- Then, you need to set two environment variables. Both environment variables should be given the same value. It should look like:  
**set HTTPS\_PROXY=https://proxyhost:port**  
**set HTTP\_PROXY=https://proxyhost:port**
- Finally, if the proxy is going to decrypt/re-encrypt HTTPS, then you need to set the REQUESTS\_CA\_BUNDLE environment variable to point to your certificate bundle (i.e. .pem file):

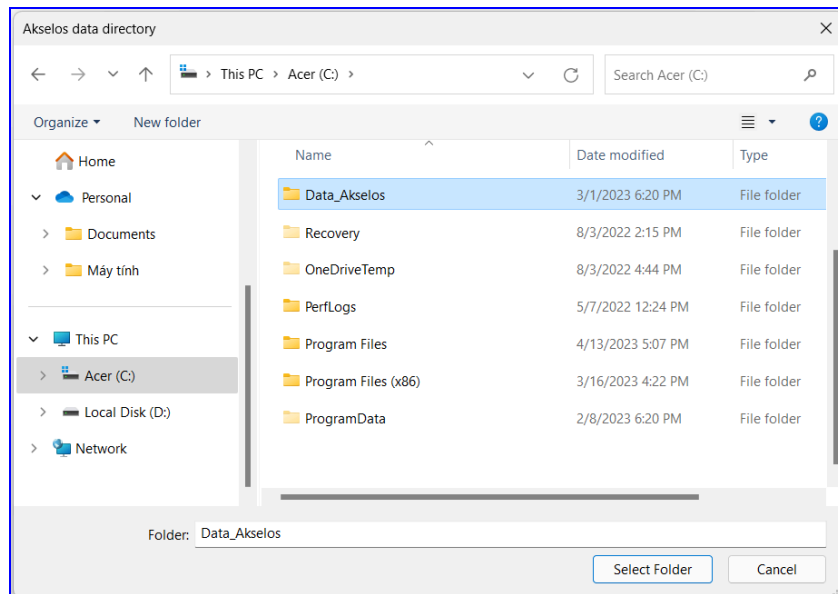
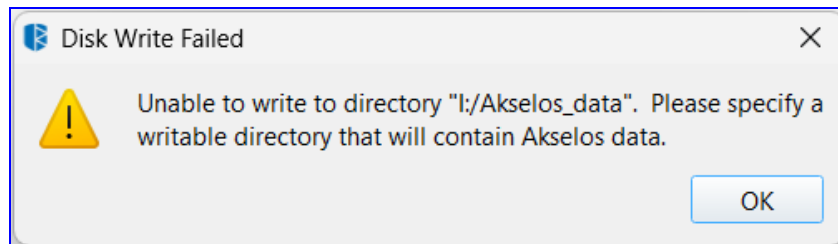
**set REQUESTS\_CA\_BUNDLE=path\_to\_your\_pem\_file**

Otherwise, Akselos Modeler will use the default .pem file in the "certifi" folder of the Akselos Modeler's installation directory which might not work with your proxy.

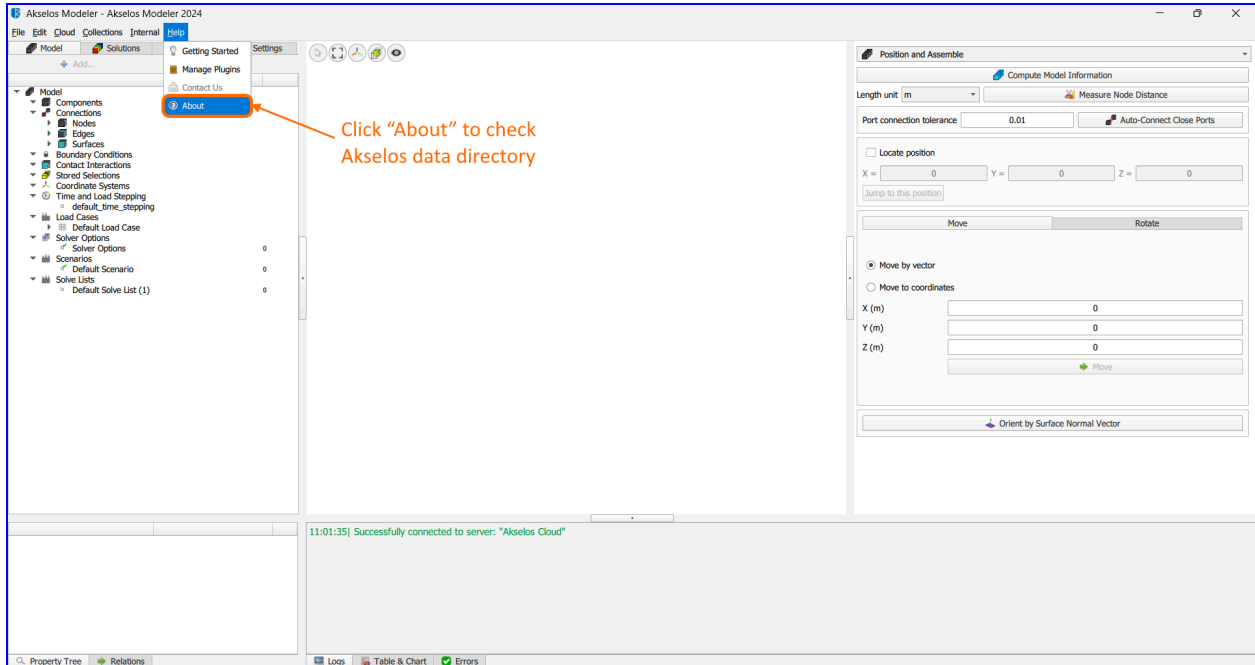
## STEP 5 - Setup Akselos Data Directory

Besides the software folder (usually at C:\Program Files\Akselos), Akselos Modeler also needs access to another directory in order to store data such as meshes and other model data. We refer to this directory as the Akselos “data directory”.

By default, the data directory will be located inside the current user’s AppData directory (i.e. C:\Users\Username\AppData\Local\Akselos\Modeler\5.1.0). When you launch Akselos Modeler, it will check if you can write to this folder. If you cannot, then you will see the warning below and you will be asked to select a new data directory location.



Also, users can change the location of the data directory from within the user interface at any time by clicking on the About button in the top right of Akselos Modeler, and then using the “Set data directory” button. If the data directory is changed, then the user interface must be restarted for this change to take effect.

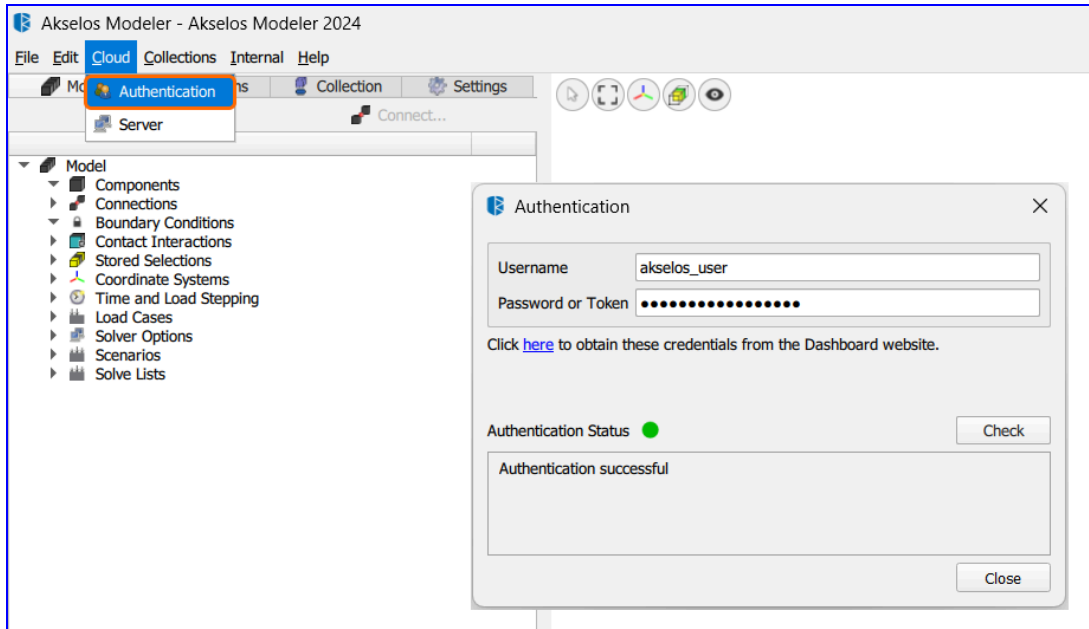


In the figure below, we have set the data directory to be “I:/Akselos\_data”.

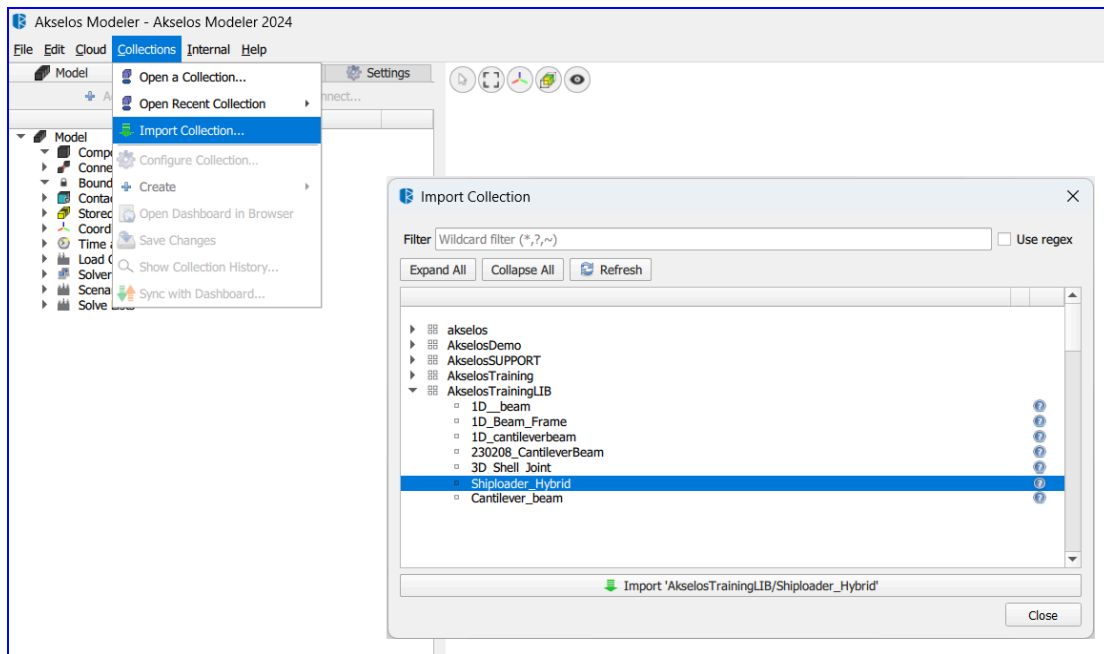


## STEP 6 - Download Collections

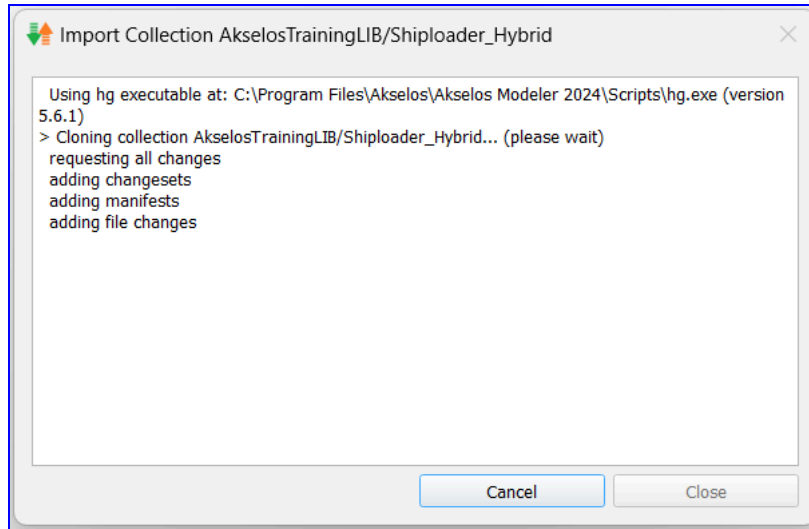
When launching Akselos Modeler, if you want to download one or more Collections so that you can assemble and solve models, go to the Cloud tab in Akselos Modeler, and open the Authentication menu. Enter your login and password and confirm that you see the "Authentication successful" message.



Now you may import a Collection from the server. To do this go to the Assemble tab, and choose "Import -> collection from Akselos Cloud". Below we illustrate the importing of Shiploader\_Hybrid collection from the Akselos Cloud server.

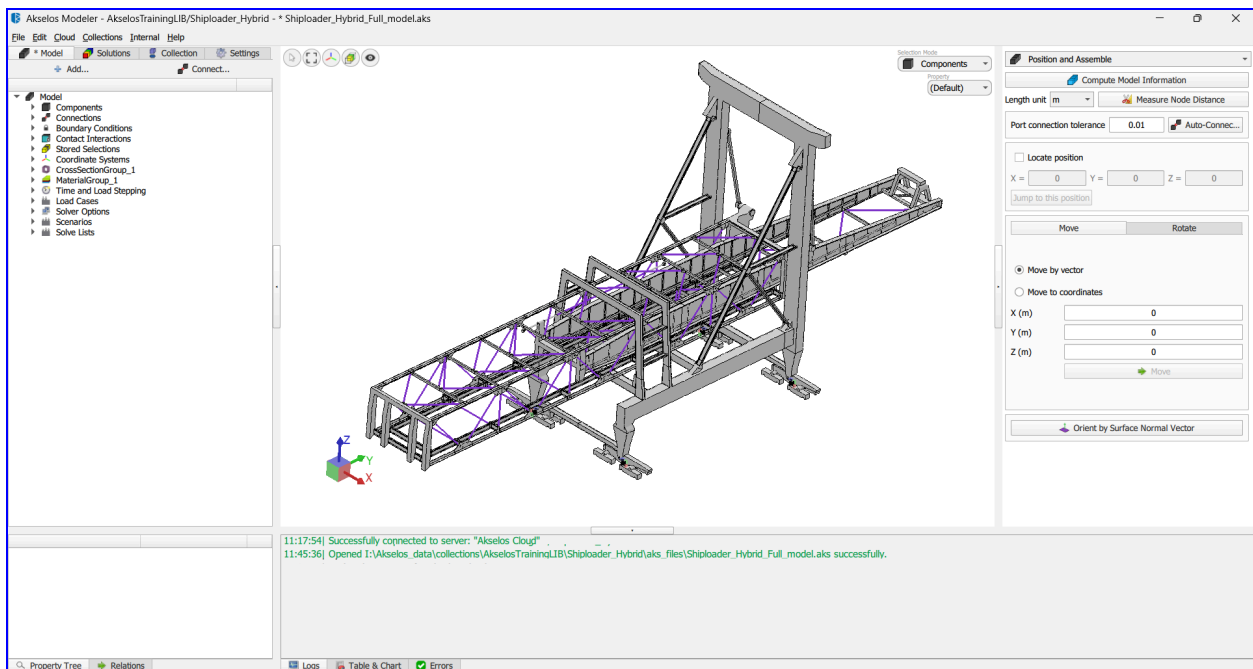


A dialog box will appear that shows the download progress:



## STEP 7 - Open Model and Solve

After the Collection downloading successfully finishes, we can open an Akselos model (an .aks file) as shown below picture. Note that the data directory contains example .aks files for each Collection, so you can use one of these files to check that you can correctly open a model.



## CHECK FOR UPDATES

To update your Akselos Modeler:

- Open **Akselos Updater** by clicking the **About** button in the **Model** ribbon. In the About box, click **Check for Updates**.



- Then wait while Akselos Modeler looks for the latest updates for your computer.
- If you see a dialog box telling you that important updates are available, or telling you information about the update (new features, enhancements, bug fixes), click the **Download** button to download and install the new version.
- After downloading the new version, the Setup Wizard will automatically open. Please complete the installation as STEP 1.

For information on Akselos Modeler Automatic Updates, visit [Akselos Dashboard website](#).

## Support

# Contact us for support

## Lausanne, Switzerland

EPFL Innovation Park, Building D  
1015 Lausanne  
Switzerland  
T: +41.21.510.24.60  
E: support@akselos.com  
Office hours: 9.00 - 17.30 (CET)

## Boston, USA

1309 Beacon Street  
#300 Brookline  
MA 02446  
T: +1.617.588.0100  
E: support@akselos.com  
Office hours: 9.00 - 17.30 (EST)

## Ho Chi Minh City, Vietnam

1st Floor, No. 67-69 Vo Nguyen Giap Street, Thao Dien Ward,  
Thu Duc City, Ho Chi Minh City  
T: +84.984.55.4443  
E: support@akselos.com  
Office hours: 9.00 - 17.30 (ICT)