

**WENZHOU HAOPAI CHILDREN'S PRODUCT CO.,LTD**

Address: 5th Floor,No.40 Baicheng Road,Xianyan Street,  
Ouhai District,Wenzhou City, Zhejiang Province, P.R.China

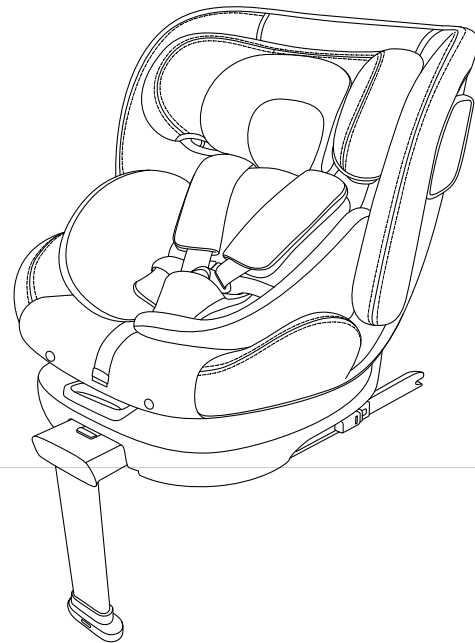
Tel.: 86-577-86058869

**LOGO**

**PRODUCT TYPE: KL001**

**I-Size 40-105cm≤18kg**

**I-Size booster seat 100-150cm**



## CATALOGUE

1.NOTICE.....	4	6.INSTALLTION.....	19
2.STRUCTURE NAME.....	5	6.1 Installed in Rearward Facing Position with ISOFIX and support leg (40-105cm).....	19
3.PRODUCT INFORMATION.....	7	6.2 Installed in Forward Facing Position with ISOFIX and support leg (76-105cm).....	20
4.WARNING.....	8	6.3 Installed in Forward Facing Position with ISOFIX and safety belt (100-150cm).....	21
5.SAFETY SEAT USE METHOD.....	9	6.4 Installed in Forward Facing Position with Adult safety-belt only.....	22
5.1 Install location.....	9	7.CARE AND MAINTENANCE.....	22
5.2 How to Use the Harness Buckle.....	10		
5.3 Adjust the Headrest.....	11		
5.4 Adjust Safety Belt Lengthen.....	12		
5.5 Adjust the Rotation of the Seat.....	13		
5.6 Adjust the Angle of the Child Safety Car Seat.....	15		
5.7 Removing 5-Point Harness and Storage the Accessory Part.....	16		
5.8 Adjust the Length of Support Leg.....	17		
5.9 Removing Sleeping Pad.....	18		
5.10 Removing and Putting on the Fabric Cover....	18		

**IMPORTANT:READ THESE**

**INSTRUCTIONS CAREFULLY BEFORE  
USE AND KEEP FOR FUTURE  
REFERENCE.**

If these instructions are not followed, the  
safety of a child may be severely endangered.

Installing in rearward facing with 5 point harness :40-105cm

Installing in forward facing with 5 point harness :76-105 cm

Installing in forward facing with 3 point belt :100-150 cm

## 1. NOTICE

NOT TO USE REARWARD FACING ECRS ( ECRS = Enhanced Child Restraint System) IN SEATING POSITIONS WHERE THERE IS AN ACTIVE FRONTAL AIRBAG INSTALLED.  
IMPORTANT - DO NOT USE FORWARD FACING BEFORE THE CHILD'S AGE EXCEEDS 15 MONTHS ( Refer to instructions).

Notice regarding i-Size category Enhanced Child Restraint Systems(40-105cm).

This is an i-Size Enhanced Child Restraint System.

It is approved according to UN Regulation No.129, for use in, i-Size compatible vehicle seating positions as indicated by vehicle manufacturers in the vehicle user's manual.

If in doubt, consult either the Enhanced Child Restraint System manufacturer or the retailer.

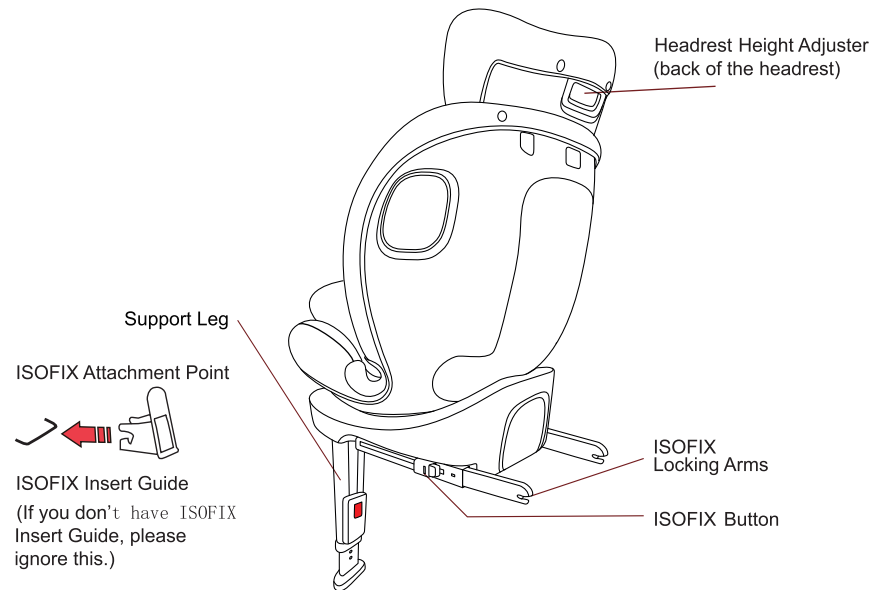
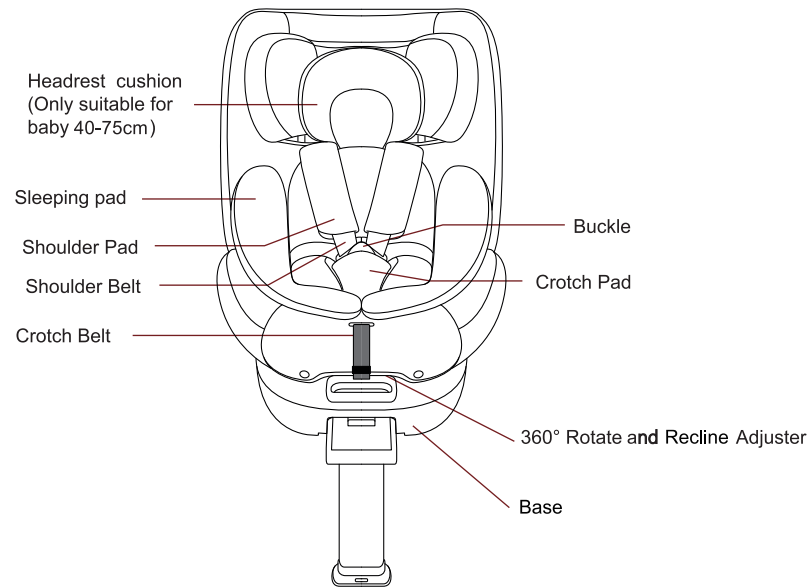
Notice regarding i-Size booster seat category Enhanced Child Restraint Systems (100-150cm).

This is i-Size booster seat Enhanced Child Restraint System.

It is approved according to UN Regulation No.129, for use primarily in "i-Size seating positions" as indicated by vehicle manufacturers in the vehicle user's manual.

If in doubt, consult either the Enhanced Child Restraint System manufacturer or the retailer.

## 2. STRUCTURE NAME



### 3.PRODUCT INFORMATION

This product is a 360°degree rotating child restraint system.

The following information can help you better understand this product.

	Tested and approved according to UN R129/04		
	Body size	Installation method	Installation direction
I-size	40-105cm≤18kg	Isofix+support leg	rearward facing
	76-105cm≤18kg	Isofix+support leg	forward facing
I-size Booster Seat	100-150cm	Isofix attachments+ adult safety-belt	forward facing
I-size Booster Seat	100-150cm	adult safety-belt	forward facing

### 4.WARNING

**IMPORTANT!** Please carefully read and make sure you understand all instructions in this manual and in the vehicle owner's manual related to child safety seats. Install and use the child safety seat as described in the instruction manual. Failure to do this could result in serious injury or death of your child. Keep the instructions together with the ECRS for future reference.

**IMPORTANT!** Because of potential medical issues inherent to low birth weight and premature infants, always have a trained professional doctor or hospital staff member assess the suitability of the ECRS prior to leaving the hospital or using the ECRS.

1. Make sure any straps holding the restraint to the vehicle should be tight. Support leg should be in full contact with the ground of the vehicle. Any straps restraining the child should be adjusted to the child's body. Make sure straps should not be twisted.

2. Make sure the lap strap is worn low down, so that the pelvis is firmly engaged to prevent child from falling out of the safety car seat.

3. Make sure the the ECRS is changed when it has been subject to violent stresses in an accident.

4. Make sure the rigid items and plastic parts of a ECRS shall be so located and installed that they are not liable, during everyday use of the vehicle,to become trapped by a movable seat or in a door of the vehicle.

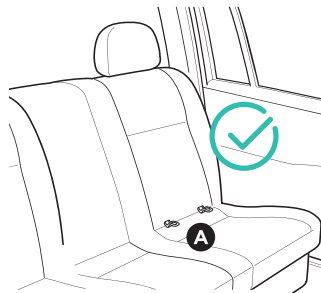
5. DO NOT make any alteration or additions to the ECRS without the approval of the Type Approval Authority, and a danger of not following closely the installation instructions provided by the ECRS manufacturer.

6. HOT! The child seat should be kept away from sunlight if the seat is not provided with a textile cover, otherwise it may be too hot for the child's skin.

7. DO NOT leave your child unattended in this restraint even for a short time.
8. Make sure any luggage or other objects liable to cause injuries in the event of a collision shall be properly secured.
9. A) DO NOT use the ECRS system without the cover.
- B) DO NOT replace seat cover with any other than the one recommended by the manufacturer, because the cover constitutes an integral part of the restraint performance.
10. DO NOT use the ECRS system if position of the adult safety-belt buckle to the main load bearing contact points on the restraint is unsatisfactory, please contact the manufacture in doubt about this point.
11. DO NOT use any load bearing contact points other than those described in the instructions and marked in the ECRS. please contact the manufacture in doubt about this point.
12. Please read the car manufacturer's handbook before installing this i-Size ECRS.

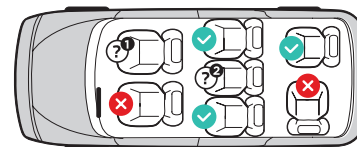
## 5.SAFETY SEAT USE METHOD

### 5.1 Install Location



**A** ISOFIX Attachments

This ECRS system is suitable for vehicles equipped with the ECE R14 requirements. And only after installed ISOFIX, then can use on it.

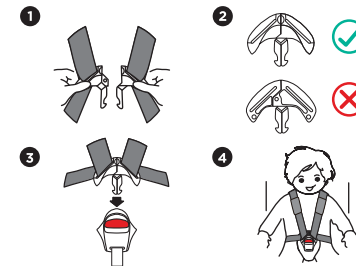


✓ Correct/ Proper    ✗ Wrong/ Improper

- ?<sup>1</sup> When front theof the seat with opened airbag, cannot install in this place.
- ?<sup>2</sup> Only with ISOFIX attachments can install in this place.

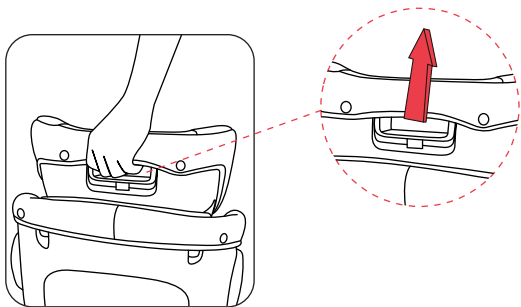
### 5.2 How to Use the Harness Buckle

Hold the two buckle tongues together. Make sure the right side is up. Engage them before putting them into the harness buckle, which should hear an audible CLICK. Pull shoulder straps to remove all slack from the lap section ensuring that the hamess is lying flat and the hamess buckle is locked. Open the harness buckle by pressing the red button.



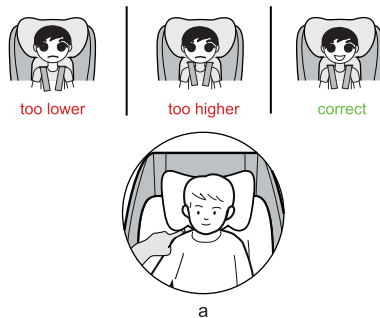
### 5.3 Adjust the Headrest

The shoulder straps are adjusted as follows:  
Loosen the shoulder straps of the child seat as much as possible.  
Pull the headrest height adjuster, select the correct height of the shoulder straps and engage it in position that fits your child by releasing the adjuster. Pull the headrest to make sure it is locked after the adjustment.



### ATTENTION!

A correctly adjusted headrest ensures optimal protection for your child in the safety seat:  
The headrest must be adjusted so that the shoulder straps are at the same level as your child's shoulders.



Adjust the headrest to the proper position, so that the distance between the shoulder of the child and the bottom of the headrest can be lowered by one finger.

### 5.4 Adjust Safety Belt Lengthen

#### A Tighten Safety Belt

Pull up shoulder belt and the lap belt will tighten, then pull crotch belt to tighten safety belt.

Tighten the safety belt as much as possible without causing discomfort to the child. The lap belt is as low as possible and should put near child's crotch not abdomen.

P.S.: Loose safety belt is dangerous. Please check safety belt adjuster whether work, then tighten safety belt. After tightening the seat belt, adjust the shoulder pads to the appropriate position on the chest.

#### B Loosen Safety Belt

#### 5.4 Adjust Safety Belt Lengthen

When pressing limited slide button, the other hand grasping shoulder belt which under shoulder pad (not grasp shoulder pad belt) to child right ahead to loosen safety belt.

A:



B:

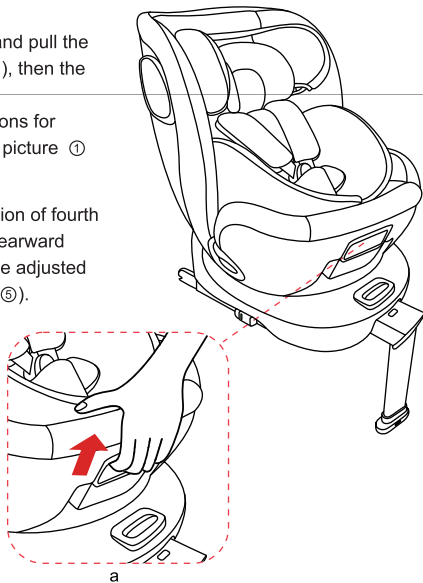


### 5.5 Adjust the Angle of the Child Safety Car Seat

Push the recline handle up and pull the seat outward ( see picture a ), then the seat can be adjusted.

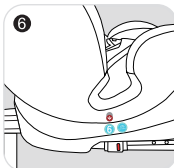
It can be adjusted to 4 positions for forward-facing use( see p14 picture ① ②③④ ).

When the seat is in the position of fourth level, rotate the seat to the rearward direction, and the seat can be adjusted to fifth level( see p14 picture⑤).



#### Installation of rearward facing

40-105cm, ≤18kg  
0-3 years



Sixth Level (Lying Level)

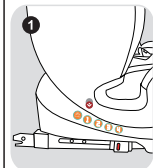
40-150cm

#### Installation of forward facing

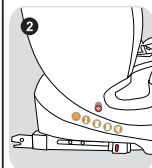
76-105cm, ≤18kg  
9 months-3 years

#### Installation of forward facing

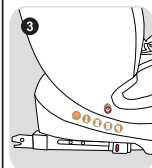
100-150cm  
3-10years



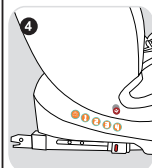
First Level



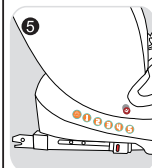
Second Level



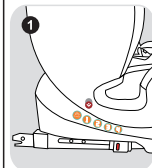
Third Level



Fourth Level



Fifth Level



First Level

Note: Do not use forward facing before the child's age exceeds 15 months.

### 5.6 Adjust the Rotation of the Seat

**Pull the rotate and recline adjuster with your hand,** then rotate the safety car seat to 360 degree angel. ( see picture a )

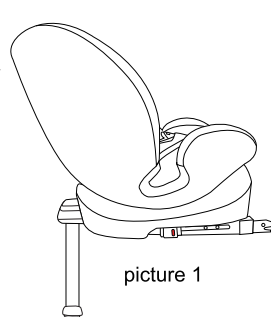
**ACTION:** Each time rebound the rotation adjuster back.

To make sure the seat is fixed well.

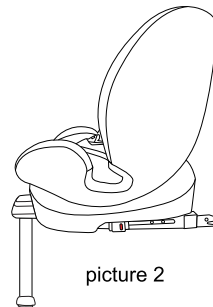
A. Rearward Direction: (40-105cm), must use rearward direction ( see picture 1)

B. Forward Direction: ( 76-150cm ), must use forward direction ( see picture 2)

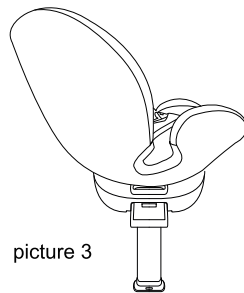
C. When the seat is rotated to 90 degrees, the user can place the child in this position, but he/she cannot use this angle during driving( see picture 3)



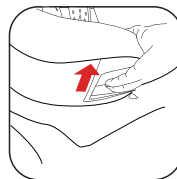
picture 1



picture 2



picture 3



a

### 5.7 Hiding 5-Point Harness and Storage the Accessory Part

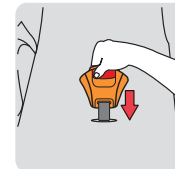
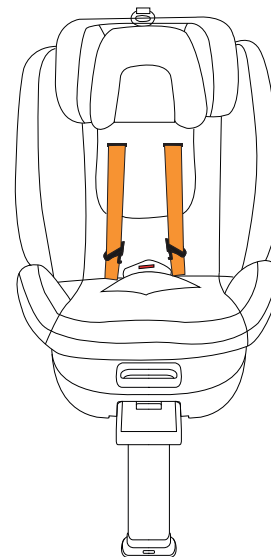
**Step 1: Hidden five-point seat belt**

Remove the shoulder pad from the seat belt and keep it in a safe place.

Unbuckle your seat belt and tighten your seat belt, place the two seat belts under the cloth cover evenly.

**Step2: Storage Buckle**

Open the buckle, take out buckle tongues from shoulder belt. Pull down buckle cross cloth cover. Later pick up the cover in the PE board and storage the buckle. ( Picture a\b\c )



a



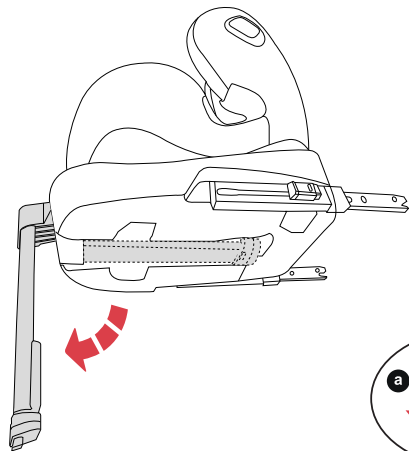
b



c

### 5.8 Adjust the Support Leg

Pull out the support leg as picture



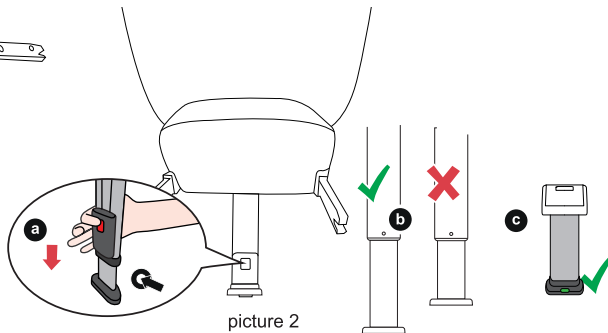
#### Adjust the Length of Support Leg (see picture 2)

a) Press the adjust button of support leg, hold the support leg using the other hand and then adjust the length of support leg.

b) When support leg is in full contact with the ground of vehicle so that can release the adjust button.

c) Pull the support leg to make sure it is locked.

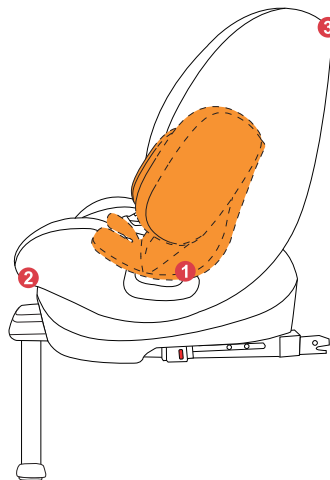
**NOTE:** After finishing the installation of support leg, display window turns into green color.



picture 2

### 5.9 Removing Sleeping Pad

When your child's weight exceed 75CM , remove the sleeping pad.



### 5.10 Removing and Putting on the Fabric Cover

1. Remove the 5-point harness.
2. Take off the cover from the backrest and base.
3. Move the headrest of the child seat up to the highest position.

4. First take the cover off base of the headrest, then remove the cover of the headrest.

To re-fit the cover, Firstly put on the headrest's cover, then put on the plastic shell's cover in the order of ①②③ ( see picture)

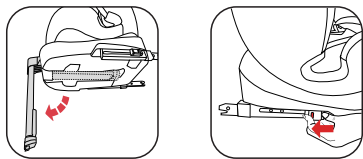
**CAUTION!** Never use the child seat without a correctly installed.

**CAUTION!** Check that the harness straps are not twisted and that they have been correctly inserted in the belt slots of the cover.

## 6. INSTALLTION

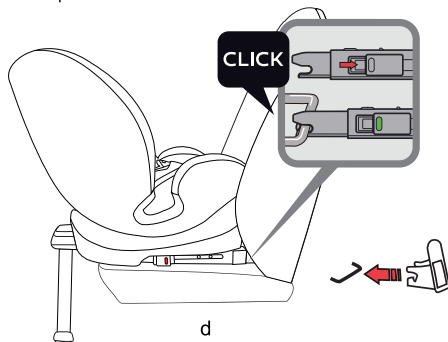
### 6.1 Installed in Rearward Facing Position with ISOFIX and Support Leg (40-105cm).

- 1) Pull out the support leg
- 2) Press the button to release the ISOFIX



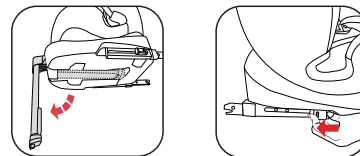
**NOTE:** The ISOFIX attachment points are located between the surface and the backrest of the vehicle seat. Press the ISOFIX button to pull out the two locking arms from the base bottom. Insert the locking arms into ISOFIX attachment points until you hear an audible **CLICK** which indicates they are fully engaged. And on both sides of the locking arms button turn into green safety color. Pull out the support leg to adjust it is in full contact with the ground of vehicle. Make sure the display window of support leg turns into green color.

- 4) Put the ISOFIX insert guide into the two ISOFIX attachment points of your vehicle (d). If you don't have ISOFIX insert guide, please ignore this step.



### 6.2 Installed in Forward Facing Position with ISOFIX and Support Leg (76-105cm).

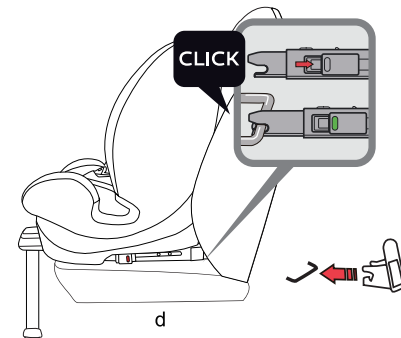
- 1) Pull out the support leg
- 2) Press the button to release the ISOFIX



**IMPORTANT:** Do not use forward facing before the child's age exceeds 15 months. Put the ISOFIX insert guide into the two ISOFIX attachment points of your vehicle. If you don't have ISOFIX insert guide, please ignore this step.

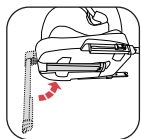
**NOTE:** The ISOFIX attachment points are located between the surface and the backrest of the vehicle seat. Press the ISOFIX button to pull out the two locking arms from the base bottom. Insert the locking arms into ISOFIX attachment points until you hear an audible **CLICK** which indicates they are fully engaged. And on both sides of the locking arm's button turn into green safety color.

- 4) Put the ISOFIX insert guide into the two ISOFIX attachment points of your vehicle (d). If you don't have ISOFIX insert guide, please ignore this step.

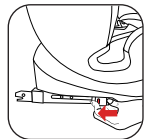


### 6.3 Installed in Forward Facing Position with ISOFIX and Adult safety belt

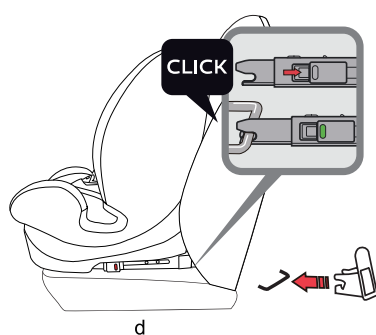
- 1) Push the support leg, and hidden the leg un  
Press the button to release the ISOFIX(b).



a



b



d

- 4) Put the ISOFIX insert guide into the two ISOFIX attachment points of your vehicle (d).

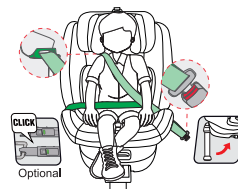
If you don't have ISOFIX insert guide, please ignore this step.

- 4) Put the child into the safety car seat, use the safety belt to hold the baby in place.



**NOTE:** The ISOFIX attachment points are located between the surface and the backrest of the vehicle seat. Press the ISOFIX button to pull out the two locking arms from the base bottom. Insert the locking arms into ISOFIX attachment points until you hear an audible **CLICK** which indicates they are fully engaged. And on both sides of the locking arm's button turn into green safety color.

### 6.4 Installed in Forward Facing Position with Adult safety-belt only.



### 7. CARE AND MAINTENANCE

Periodically inspect your child seat for worn or damaged parts. If damaged parts are found, replace the child seat. Keep the child seat clean. Do not lubricate any parts of the child seat. To prolong the life of your nursery product, keep it clean and do not leave it in direct sunlight for extended periods of time. Removable fabric covers and trims may be cleaned using warm water with a household soap or a mild detergent. Allow it to dry fully, preferably away from direct sunlight.

### CLEANING THE BUCKLE

Food, drink, or other debris may collect inside the harness buckle which can affect proper functioning. Wash in warm water until clean. Be sure you can hear an audible click to make sure the buckle is working properly.

### CLEANING THE HARNESS AND SHELL

Sponge clean using warm water and mild soap; do not use any other cleaning agents.

### STORAGE

Store in a safe, dry place and away from heat and direct sunlight. Avoid placing heavy objects on top of the seat.



MAXIMUM WASH  
TEMPERATURE 30°C



DO NOT DRYING



DO NOT BLEACH



DO NOT IRON



DO NOT DRYCLEAN



DRY FLAT IN SHADE PLACE