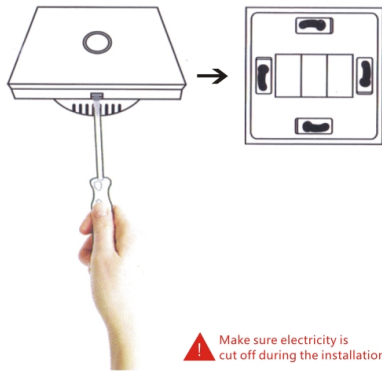


SMART TOUCH SWITCH

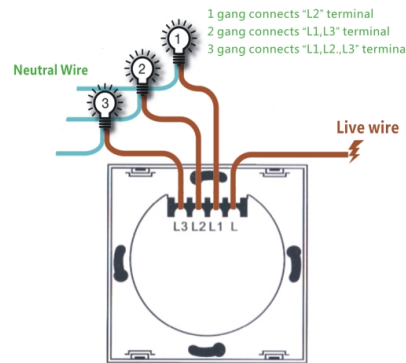
Quick Installation Guide

Installation Wiring Diagram

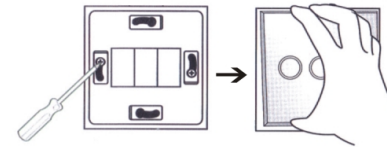
1. Remove the panel with screwdriver
(Please don't install with electricity power on)



2. Prepare to connect wires
 - a. Live wire connects "L" terminal
 - b. Lamp wire connects "L1,L2,L3" terminal



3. Fix the switch onto wall
 - a. Put the switch into switch box in the wall
 - b. Mount the two side screws
 - c. Install the glass panel (install from up above)
 - d. Finish installation
 - e. Turn on electricity, touch after 10 seconds

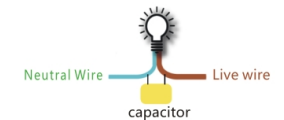


Note: the switch must be installed without electricity, electricity must be turn on after the installation(cover the glass touch panel), touch for test after 10 seconds, or the switch will not work well.

Common fault diagnosis

1. When the lamp appears shiny or flickering

When the lamp appears shiny or flickering, please connect the Yellow capacitor between the neutral wire and the live wire of the lamp, then the switch will work well with the light, as shown in the picture



2. Switch is installed, touch but no react

First make sure that the wiring is properly connected in accordance with the wiring diagram, ensure that the lamp has been connected (or not damaged).

1. disconnect power supply for 1 minutes
2. install the switch, cover the glass panel
3. turn on power,
4. wait 10 seconds and then touch

Must read before installation

Suitable places:
smart touch switch for home, hotel, office and other lighting. Not suitable for factories, hospitals CT /nuclear magnetic resonance, room and other places with strong electromagnetic interference.

Applicable lamps:
LED lamp, incandescent lamp, energy-saving lamp, electronic rectifier drive fluorescent lamp, in order to smart touch switch more stable and reliable work, please adopt the regular LED, energy-saving lamps and other lamps and light sources. The load can't connect with inductance ballast driven fluorescent lamp

Install the switch with electricity off
Do not install in damp environment
Do not exceed the maximum load
Please follow instructions and properly install

Note:
the switch must be installed without electricity, electricity must be turn on after the installation(cover the glass touch panel), touch for test after 10 seconds, or the switch will not work well.

Product Features

Industry grade design capacitance touch screen, touch sensitive & quick response. Ultra-low power design, more energy saving, more environmental.

Ultra clear tempered glass panel, fashion design. you can touch it with wet hand very safe.

Unique night indicator design, luxury, fashion. Convenient for old people & children.

Equipped with smart host, it can be controlled through internet, and also the light ON/OFF status can be checked.

Single live wire installation, compatible with traditional switch installation method. No need to change the original circuit

Distinctive style, suitable for apartment, foreign-style house, villa, office building, hotel and etc.

Product Parameters

Voltage : 170V-240V AC
Dimension : 86*86*34 mm
Material : Panel: Ultra clear tempered glass panel
Back shell: fire restriction PC
Load Power: 5-200W/gang
(Note: If it is used for LED or energy saving bulb, Power load should be less than 100W/gang. The load can't connect with inductance ballast driven fluorescent lamp)
RF Frequency: 433.92MHz
Working Environment: Temperature: -10~60°C
Humidity: 10%-95%

Note: the switch must be installed without electricity, electricity must be turn on after the installation(cover the glass touch panel), touch for test after 10 seconds, or the switch will not work well.

Remote Control Pairing

(suitable for remote switch series)

1. How to use a button to turn it ON & OFF ?
Press the touch button for few seconds when rings a beep, And then press remote any key, power ON and OFF control can be realized.
2. How to use a button to turn it ON ?
Press the touch button for few seconds when rings two beep, And then press remote any key, power ON control can be realized.
3. How to use a button to turn it OFF ?
Press the touch button for few seconds when rings three beep, And then press remote any key, power OFF control can be realized.
4. How to cleanup the code ?
Press the touch button for few seconds when rings four beeps, The code will be cleared.



The corresponding button on the panel



The corresponding keys on the remote control

Remote Control Pairing

About the dimmer switch

1. How to use a button to turn it ON & OFF ? Press the touch button till the Backlight first flash , and then press remote, power ON and OFF control can be realized .
2. How to let the light dim Press the touch ON/OFF button till the backlight flash two time , And then press remote any key , power Down control can be realized .
3. How to let the light up . Press the touch ON/OFF button till the backlight flash three time , And then press remote any key , power dim up control can be realized .
4. How to cleanup the code Press the touch ON/OFF button till the backlight flash four time , The code will be cleared .