

Solar Garden Light

Operation Instructions

Solar garden lights allows you to bring light to any tree, bush, patio, fence or porch and you don't need to worry about where an electrical outlet is located. The solar garden lights work wherever the sun shines. There are no wires to install and no utility bills to pay. Simply put the garden lights where you like and enjoy.

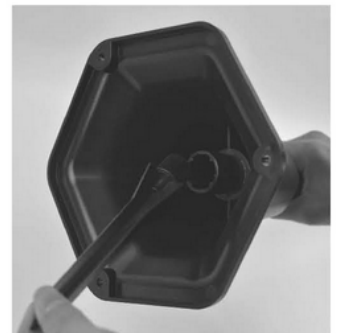
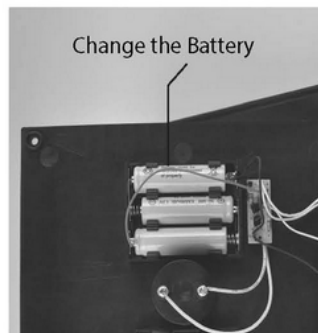
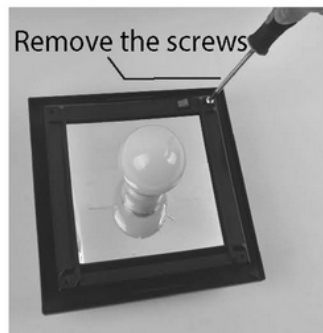
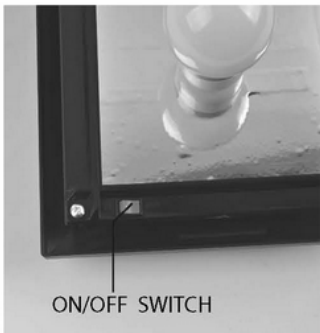
How the solar light works

The built in solar panel absorbs the energy from the sunlight and converts it into electricity which charges the Ni-MH battery. The sensor activates the power stored in the battery, which automatically switches the LED light on at dusk and automatically shuts it off at dawn. Shady locations will not fully charge the battery and may reduce the lighting time. During cloudy, rainy days, the battery may not be able to charge completely and may appear dimmer than usual.

Installing the battery

The solar garden light contains 3x AAA Ni - MH 1.2V 600mAh rechargeable battery. Under normal conditions, this battery should last up to 18 months. Replace the battery when the lights are no longer functional or are very dim during the summer months.

1. Twist the two halves of the ball to open - see diagram.
2. Using a phillips head screwdriver remove the screws either side of the solar panel and install 3 x AAA Ni-MH 1.2V 600mAh rechargeable battery.
3. Ensure that the battery is securely placed with the correct polarities.
4. Connect the two halves of the ball and twist to close.



Charging the solar light for the first time

Make sure the switch is in the ON position and place the light in direct sunlight for 24 hours. Ensure the solar panel is south facing. When fully charged the light will automatically turn on at dusk and off at dawn.

Recycling statement

Help the environment by disposing of your product responsibly. The wheellie bin symbols indicate the product and batteries must not be disposed of in the domestic waste as they contain substances which can be damaging to the environment and health. Please use designated collection points or recycling facilities when disposing of the item and batteries.

Battery warning statements

- Non-rechargeable batteries are not to be recharged.
- Use only recommended batteries.
- Don't mix old and new, or different types of batteries.
- Insert batteries in correct polarity.
- Don't short-circuit supply terminals.
- Remove exhausted batteries from the item
- Keep packaging as it contains important information.