



Description Switch disconnecter
 Code 90 AM Range
 No. of poles 1P
 Rated current 63 A
 AC Rated operational voltage (Ue) 240 V

ELECTRICAL CHARACTERISTICS

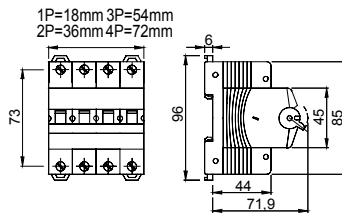
| | |
|---|-----------------|
| Standard | EN 60947-3 |
| Rated insulation voltage (Ui) | 500 V |
| Rated impulse withstand voltage (Uimp) | 4 kV |
| Rated frequency (Hz) | 50/60 Hz |
| Use category | AC-23B |
| Rated short-time withstand current for 1s (Icw) | 756 A |
| Power dissipation per pole | 2 W |
| Electrical endurance | 5.000 maneuvers |

MECHANICAL CHARACTERISTICS

| | |
|---------------------------|---|
| Mechanical life | 20.000 maneuvers |
| Screwdriver suggested | PZ2 |
| Rated tightening torque | 2 Nm |
| Max rigid cable section | ≤ 1x35 mm ² - ≤ 2x16 mm ² - ≤ 1x16 + 2x10 mm ² |
| Max. section flex. cables | ≤ 1x35 mm ² - ≤ 2x16 mm ² - ≤ 1x16 + 2x10 mm ² |
| IP degree | IP20 |
| Working temperature | -5°C ÷ +40°C |
| Tropicalization | 55°C - UR 95% |

| | | |
|---|-------------------------------------|-----------------------|
| - | - Upline/downline power supply | Si |
| - | - Biconnection (cable + fork combs) | Yes (downstream only) |
| - | - Lockable | No |

DIMENSIONAL



STANDARDS/APPROVALS



GEWISS S.p.A. Via A. Volta, 1
 24069 Cenate Sotto - Bergamo - Italy
 tel. +39 035 94 61 11 fax +39 035 94 69 09
 Company subject to the management and
 coordination of Polifin S.p.A.

www.gewiss.com
 sat@gewiss.com
 Last update 05/01/2026

Data, measures, designs and pictures are shown
 only as informative purposes,
 and could be changed without previous notice