

# AC ILLUMINATED PUSH BUTTON SWITCHES



## ■ Features

- The power switch conforms to safety standards for electrical equipment.
- A superior space factor by reducing the depth dimension.
- The snap-in type for easy mounting.
- The color can be changed to correspond to the set design.

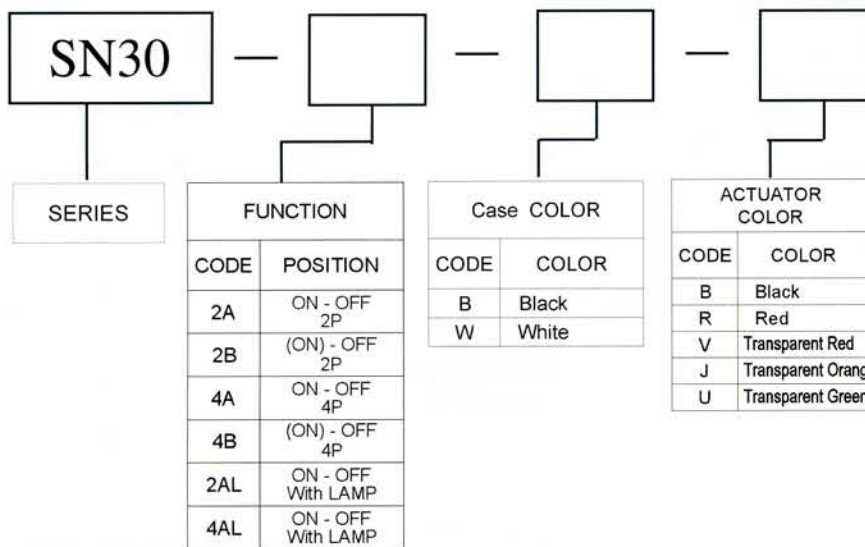
## ■ Characteristics

Item	Standard
Rating	10A 250VAC ,12A 125VAC
Insulation Resistance	100M $\Omega$ min ( DC 500V )
Dielectric Strength	AC 1000V ( 50/60Hz for 1 minute )
Contact Resistance	50m $\Omega$ max.
Electrically Life	10,000 cycles
Operating Temperature Range	-25°C ~ +85°C

## ■ Applications

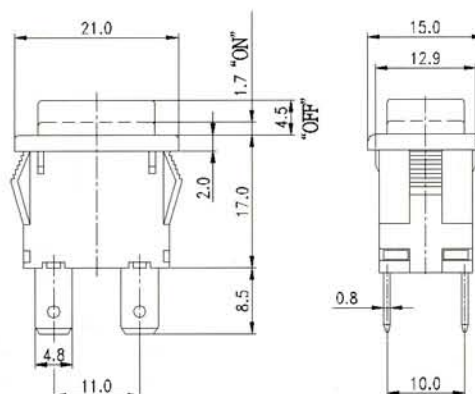
- Data processing equipment and office equipment such as copiers, which consume high of power, and general equipment such as monitors, home electric equipment and power supply.

## ■ Order Guide



Function	SCHEMATIC
4A	
4B	
4AL	

## ■ Panel hole size



PANEL THICKNESS	DIM. X
0.75 ~ 1.25	19.2
1.25 ~ 2.0	19.4
2.0 ~ 3.0	19.6

# AC ILLUMINATED PUSH BUTTON SWITCHES



## ■ Features

- The power switch conforms to safety standards for electrical equipment.
- A superior space factor by reducing the depth dimension.
- The snap-in type for easy mounting.
- The color can be changed to correspond to the set design.

## ■ Characteristics

Item	Standard
Rating	16 ( 4 ) A 250VAC
Insulation Resistance	100M $\Omega$ min. ( DC 500V )
Dielectric Strength	AC 1000V ( 50/60Hz for 1 minute )
Contact Resistance	50m $\Omega$ max.
Electrically Life	10,000 cycles
Operating Temperature Range	-25°C ~ +85°C

## ■ Applications

- Data processing equipment and office equipment such as copiers which consume high of power, and general equipment such as monitors, home electric equipment and power supply.

## ■ Order Guide

SN40

SERIES

FUNCTION	
CODE	POSITION
2A	ON - OFF
2B	(ON) - OFF
4A	ON - OFF
4B	(ON) - OFF
4AL	ON - OFF With LAMP

BASE COLOR

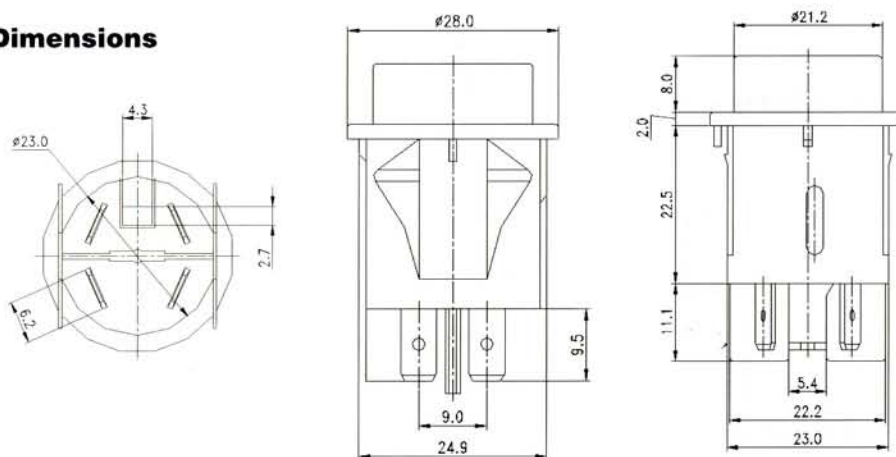
CODE	COLOR
B	Black
W	White

ACTUATOR COLOR

CODE	COLOR
B	Black
R	Red
V	Transparent Red
J	Transparent Orange
U	Transparent Green

Function	SCHEMATIC
4A	
4B	
4AL	

## ■ Dimensions



## ■ Panel hole size

