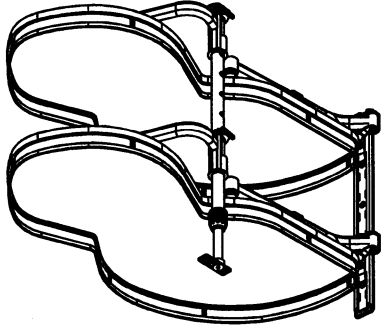


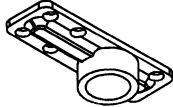
Instruction Menu

Note:

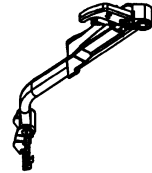
- 1. Please read this instruction carefully before install.
- 2. For cabinet width 900mm, inner height more than 600mm.
- 3. This instruction is for left side, right side is symmetrical.



G 2 Pcs



A 1 Pcs



H 2 Pcs



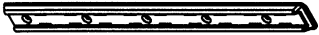
B 1 Pcs



I 2 Pcs



C 1 Pcs



J 1 Pcs



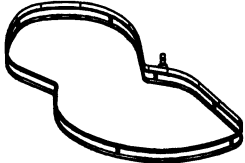
D 2 Pcs



E 5 Pcs



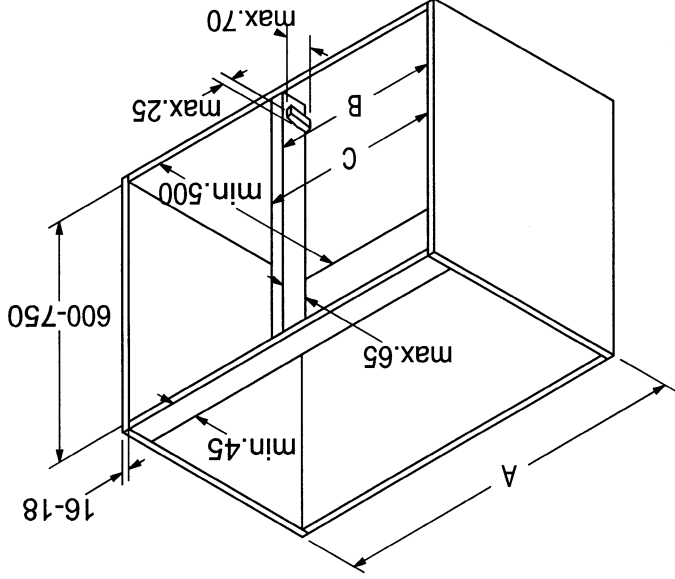
F 10 Pcs



K 2 Pcs

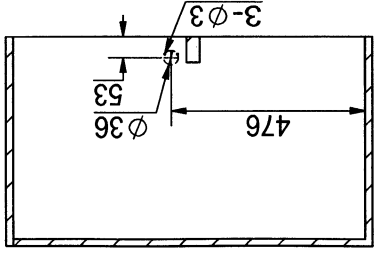
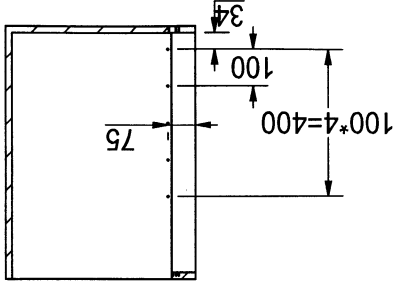
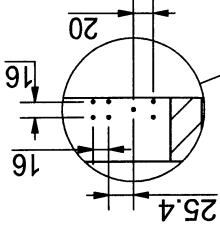
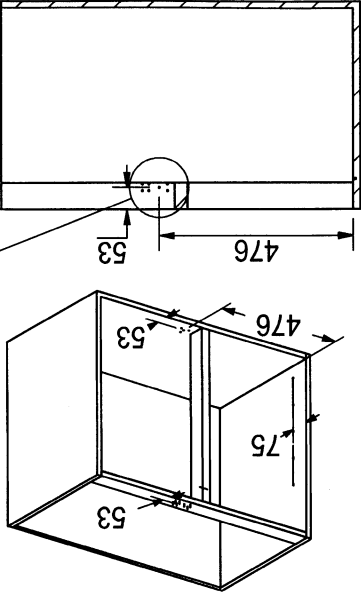
Accessories

2. Specification and suitable cabinet size:
(Door opening angle $\geq 90^\circ$)

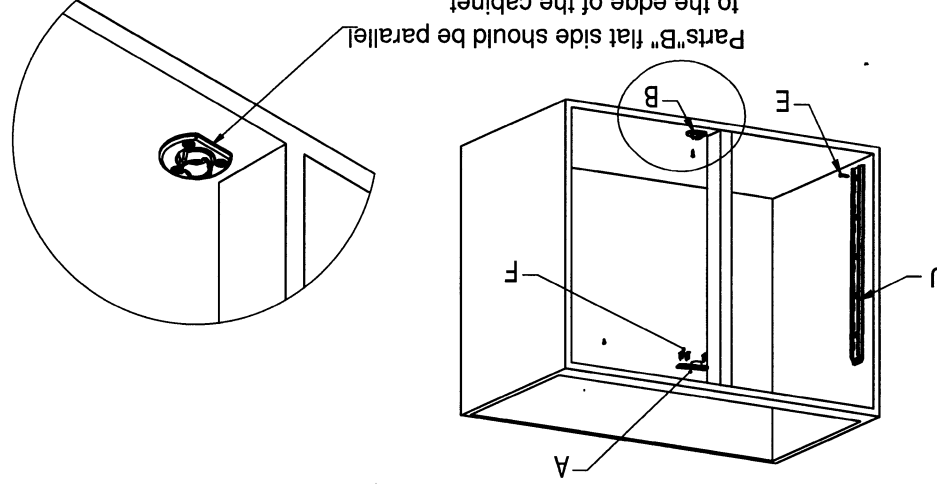


Size	Door W	450		
		A	B	
		900	411-418	
		Max450		

3. Punch holes as the drawing.

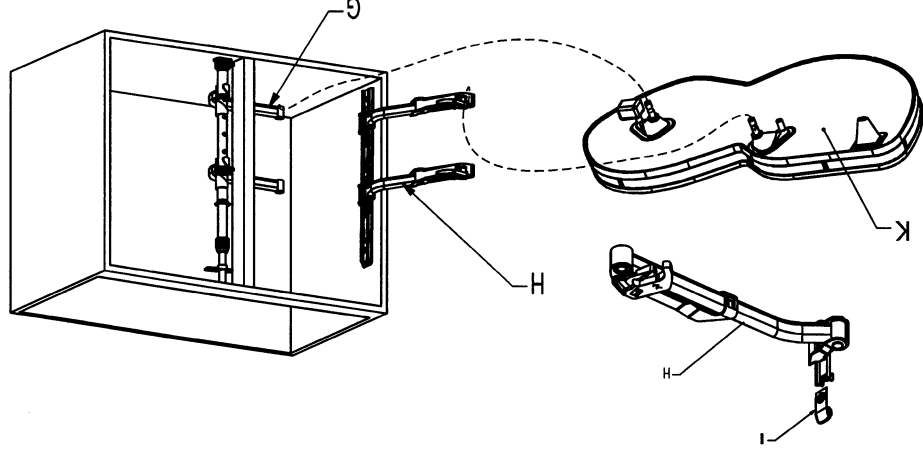


4. Fixing parts "I" with screw "F", fixing parts "E", fixing parts "A" to top and "B" to bottom with screw "F".

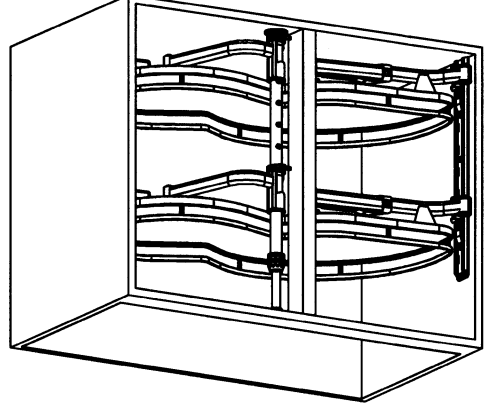


Parts "B" flat side should be parallel to the edge of the cabinet.

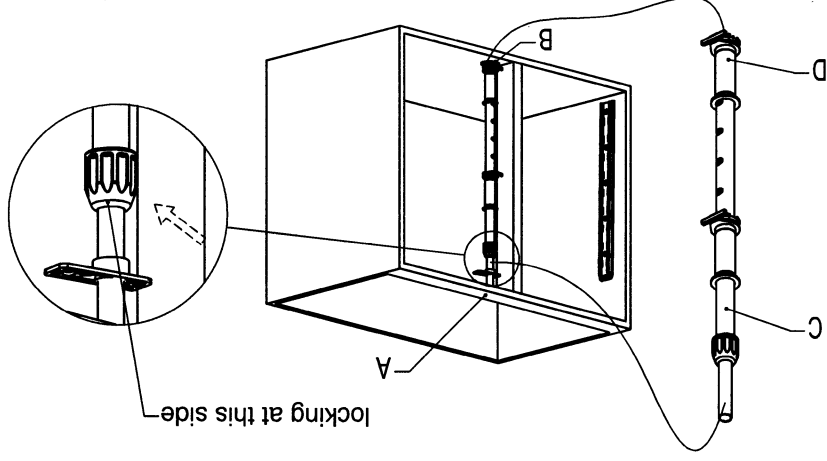
6. Put parts "I" into "H", then mounted into parts "J", part "G" mount into part "D". Install the basket "K" as drawing.



7. Installation completed.



5. Fixing Parts "D" into Parts "C" then insert it into parts "B". Adjusting Part "C" to suitable height and lock it.



locking at this side