



WARNING

- 1.) Never leave the child unattended ;
- 2.) Prevent access to stairs, steps and uneven surface ;
- 3.) Read the instructions carefully before use and keep them for future reference .
The child maybe hurt if you do not follow these instructions ;
- 4.) The child will be able to reach further and move faster than before when in the baby walking frame ;
- 5.) Guard all fires, heating and cooking appliances ;
- 6.) Remove hot liquids, electrical flexes and other potential hazards from reach ;
- 7.) Prevent collision with glass in doors, windows and furniture ;
- 8.) Do not use the baby walking frame if any components are broken or missing ;
- 9.) This baby walking frame should be used only for short periods of time(e.g.20 min) ;
- 10.)This baby walking frame is intended to be used by children who can sit unaided , approximately from 7 to 14 months. It is not intended for children weighing more than 12kg ;
- 11.)Do not use replacement parts other than those approved by the manufacturer or distributor ;
- 12.)Should you have any questions about your baby walker or experience any difficulties , please contact the retailer from which you purchased the product , your local retailer is in the best position to promptly address any requirements.
- 13.)Executive standard: ASTM F977-2012、 EN1273-2005.
- 14.)Never leave child unattended.Always keep child in view while in walker.
- 15.)Use only on flat surfaces free of objects that could cause the walker to tip over.
- 16.)To avoid burns, keep the child away from hot liquids, ranges, radiators, space heaters, fireplaces, etc.
- 17.)Each walker shall be labeled with a separate stairs warning visible to the consumer when placing the child in the walker.
- 18.)The product shall be assembled by an adult.



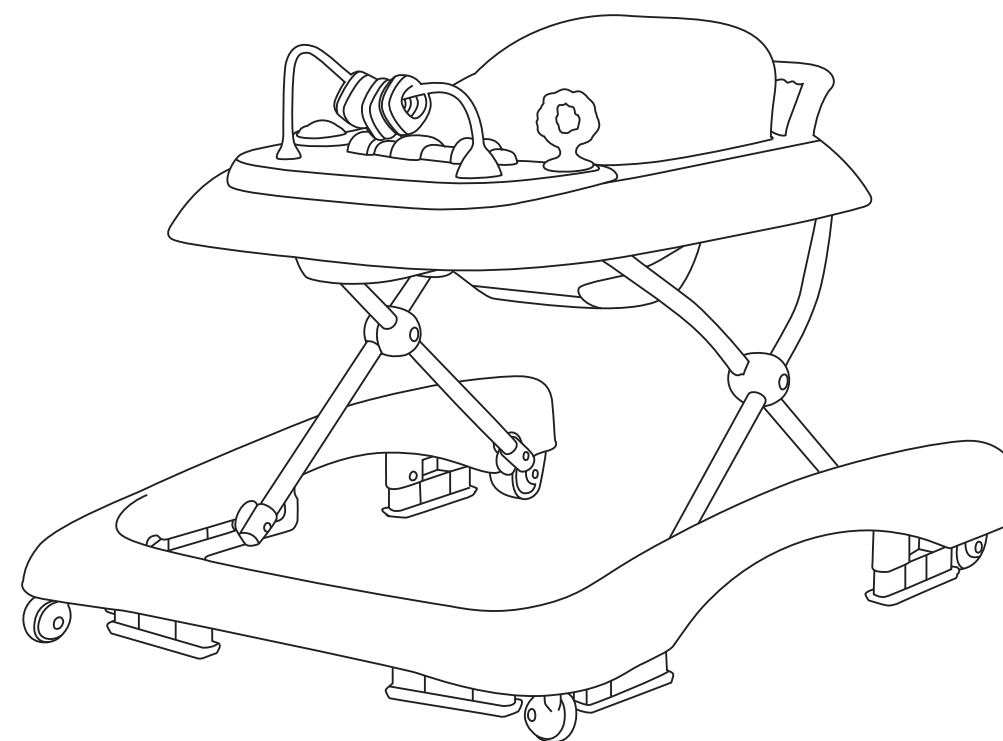
WARNING

STAIR HAZARD

Avoid serious injury or death
Block stairs/steps securely
before using walker even
when using parking brake.

2 in 1 BABY WALKER

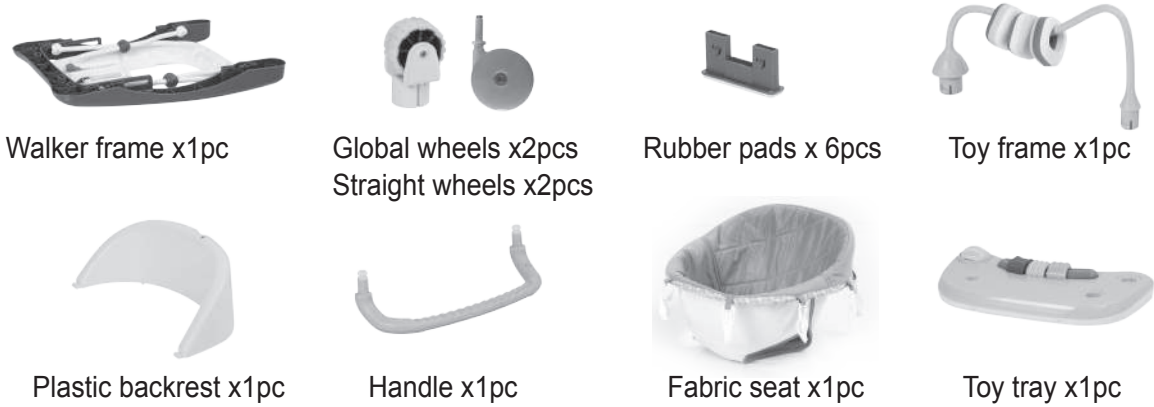
FOR SAFETY REASONS,PLEASE FOLLOW
THE INSTRUCTIONS BELOW



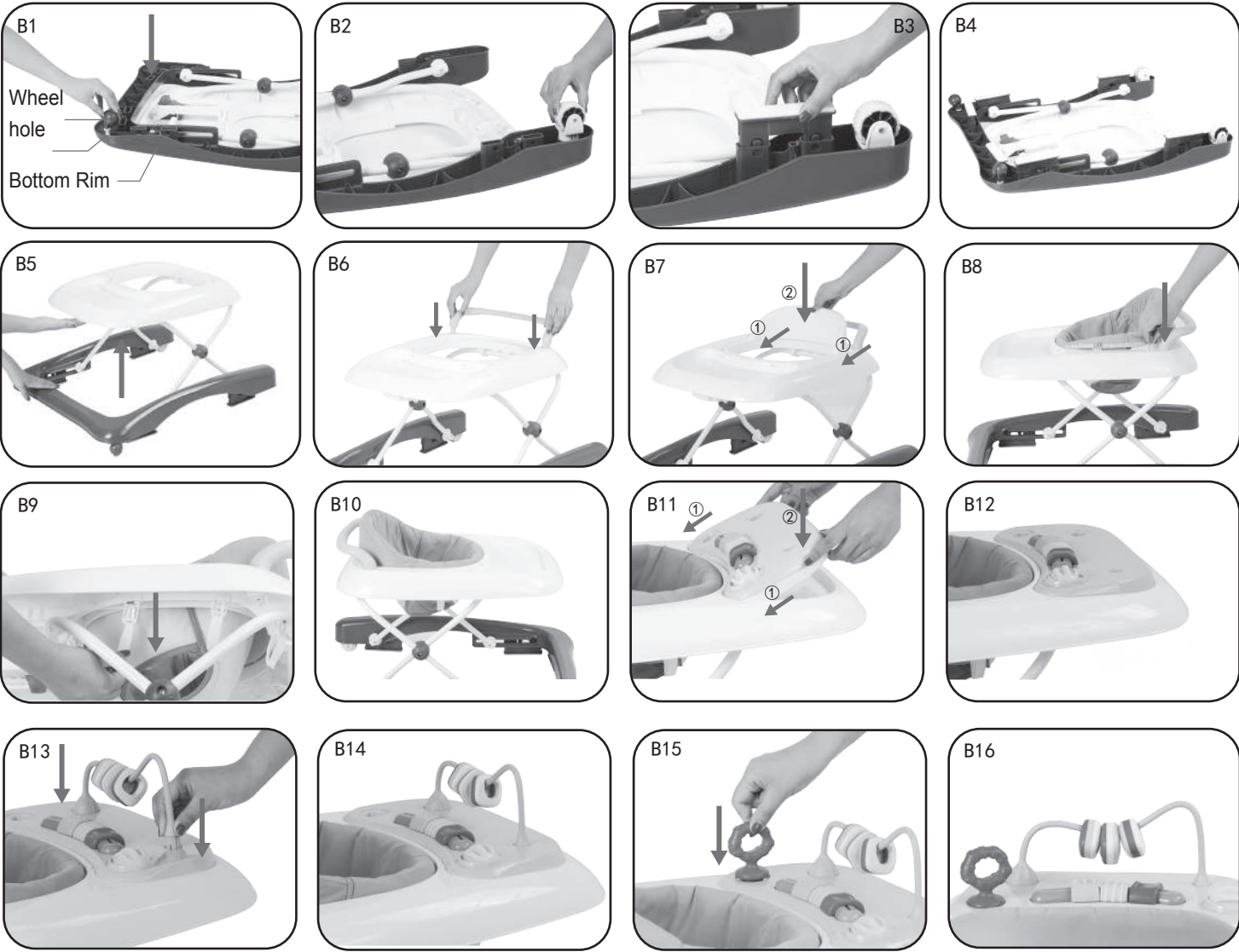
DRAWINGS IN THIS MANUAL ARE FOR ILLUSTRATION PURPOSES ONLY, ACTUAL PRODUCT MAY VARY , MANUFACTURER RESERVES THE RIGHT TO CHANGE ANY SPECIFICATION OR FEATURES WITHOUT PRIOR NOTICE.

A. CARTON CONTENTS

Please check if all those parts are included when you open the carton, if there is any missing parts, please contact your local retailer.



B.ASSEMBLY INSTRUCTION



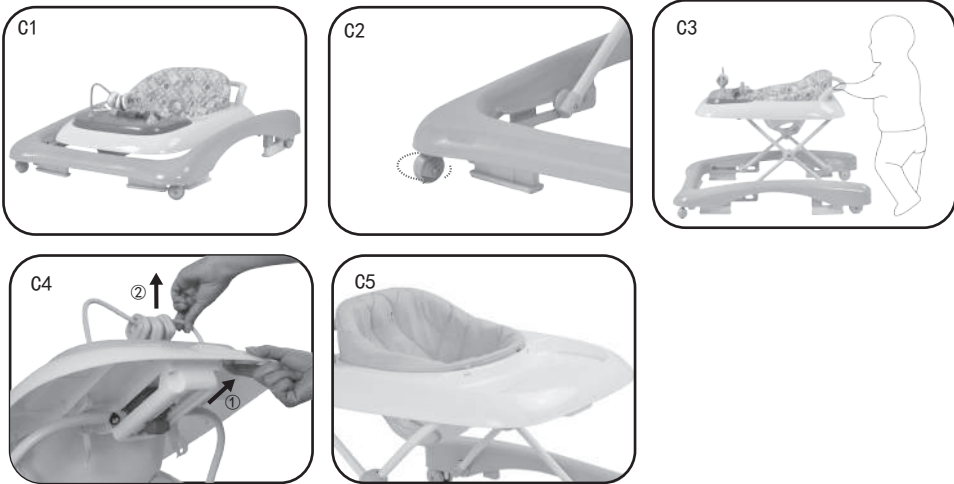
- 1.) See Fig B1, insert 2 global wheels into the holes front bottom.
- 2.) See Fig B2, insert 2 straight wheels into the holes under rear bottom.
- 3.) See Fig B3, insert 4 rubber pads into the holes at the bottom of base tray.
- 4.) Unfolding of the walker:
As shown on Fig B5, pull the top tray like the arrow shows, the walker is fully opened when you hear the sound "click".
- 5.) See Fig B6, insert handle into the 2 holes, the handle is fully installed when you hear the sound "click".



- 6.) Assembly of the backrest:
Insert the two pins on both side of the backrest as the arrow shown, and press down, the backrest is firmly assembled when you hear a click. (See Fig B7).
- 7.) Assemble of the fabric seat:
Insert all the pins into the holes on the upper tray, and then pull out the buckles at the back of seat through the holes on the upper tray according to Fig B9. The fabric seat is fixed completely (See Fig B10).
- 8.) Assembly of toy tray:
First, fix the toy tray onto the upper tray; (See Fig B11) second press down the both side of toy bracket to fix it (See Fig B13); last, press down the rotatable toy to fix it (See Fig B15).

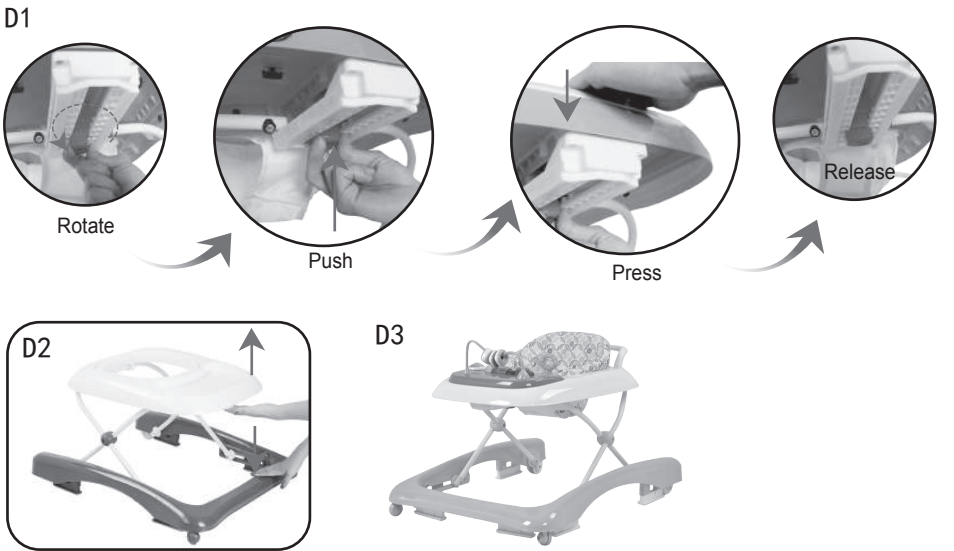
C.Function introduction

- 1.) Foldable walker: The walker can be folded compactly to save space (See Fig C1).
- 2.) Global wheels:
See Fig C2: global wheels can rotate.
- 3.) Guide the baby to hold the hand reel and start to walk (See Fig C3).
- 4.) See Fig C4, food tray function: as the arrow ① direction, press the fixed buckle, meanwhile lift the toy bridge as the arrow ② direction by another hand. Use the same method operates on the other side. Remove the toy tray.



D.FUNCTION:

- 1. HEIGHT ADJUSTOR
To adjust walker to desired position (there are 3 positions available) put one hand on the top of walker, and turn the red button on the height adjustment mechanism beneath the top table by 90 degrees with the other hand, then push up the button to adjust height. When releasing the red button, it will return to original position. The mechanism is locked automatically. (See Fig D1)



Care and Maintenance:

- 1.) Never force mechanisms or moving parts. If you are not sure what to do, refer to the instructions.
- 2.) Clean plastic and metal parts with a damp cloth or a light detergent. Clean safety rubbers regularly to maintain stopping performance. Do not use solvents, ammonia or petrol.
- 3.) Regularly check unit to ensure no parts are loose or broken.
- 4.) Clean the rubber pad regularly to maintain stopping performance.