

## Operate and Installation.

1. Download "eWeLink" app.

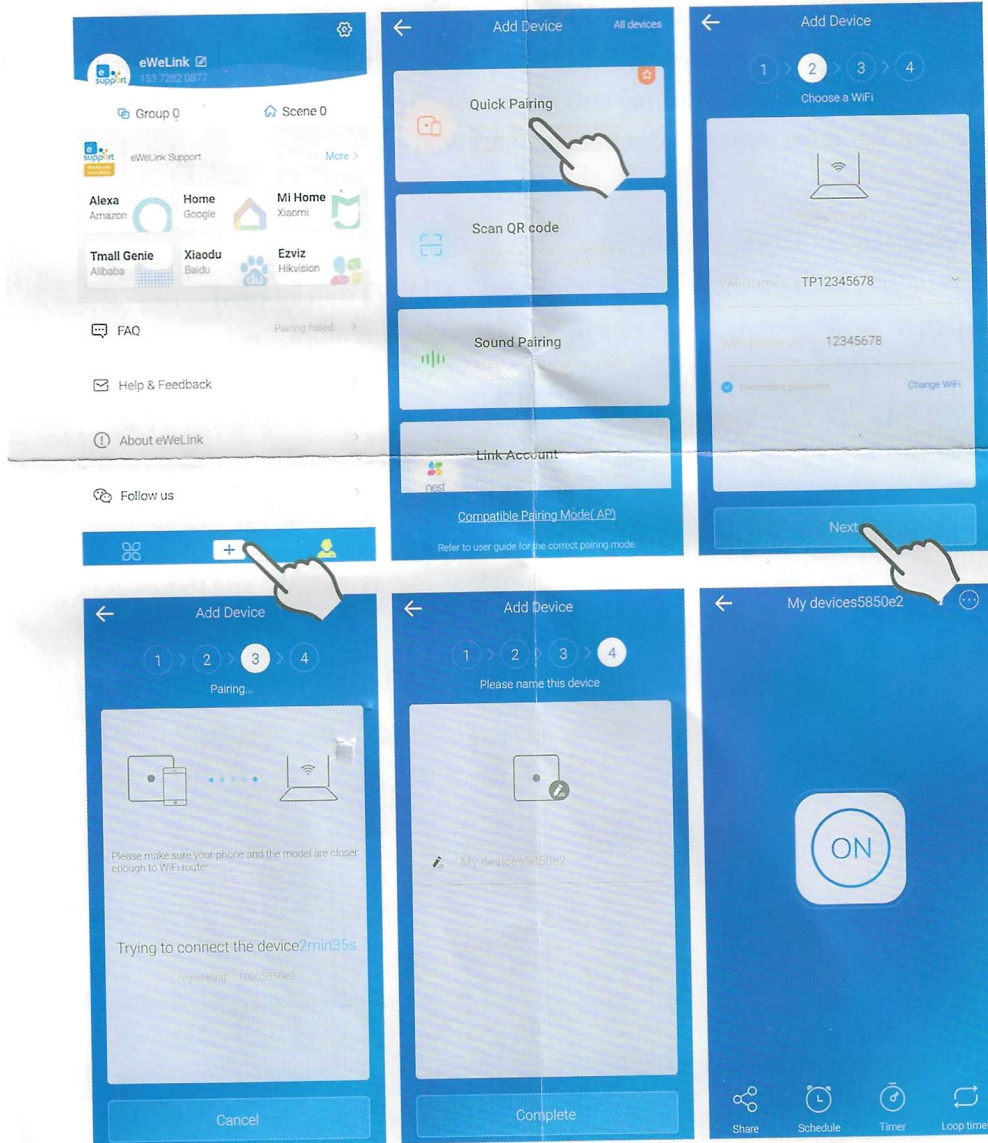
Search "eWeLink" in App Store for iOS version or Google play for Android version.



Download for Android



Download for Apple iOS



# User Manual

## Din Rail WIFI Smart Switch

Hello, Welcome to use Din Rail WIFI Smart Switch

### Specification

Standard:GB10963.1;IEC60898-1

Rate Voltage: AC230V 1P,2P; AC400V 4P

Rate Current:32A Frequency:50/60Hz Poles: 1P,2P,4P Protection: IP20

Operating Temperature:Normal temperature

Control: Remote control Connection:2.4G WIFI

### Notice

Checklist before using the device

- 1.Your Smart phone should have connected 2.4G WIFI with internet
- 2.Down the eWelink App from App Store or Google Play store,Create an account and log in.
- 3.During pairing process,make sure that your IOS or Android device and the eWelink device is within the range of the router
- 4.The device only supports 2.4G network.Please don't connect to a 5G network or hybrid network
- 5.Enter correct WIFI passwords,Make Sure that your WIFI SSID and Passwords don't contain special characters



Indicator

Long press for 6s  
After saw indicator fast flash  
Open App to pair

