

# **CIRCULATOR PUMP INSTRUCTIONS**

# CIRCULATOR PUMP

Model: LPS25-4S/180, LPS25-6S/180



(The picture is for reference only, please refer to the actual object)



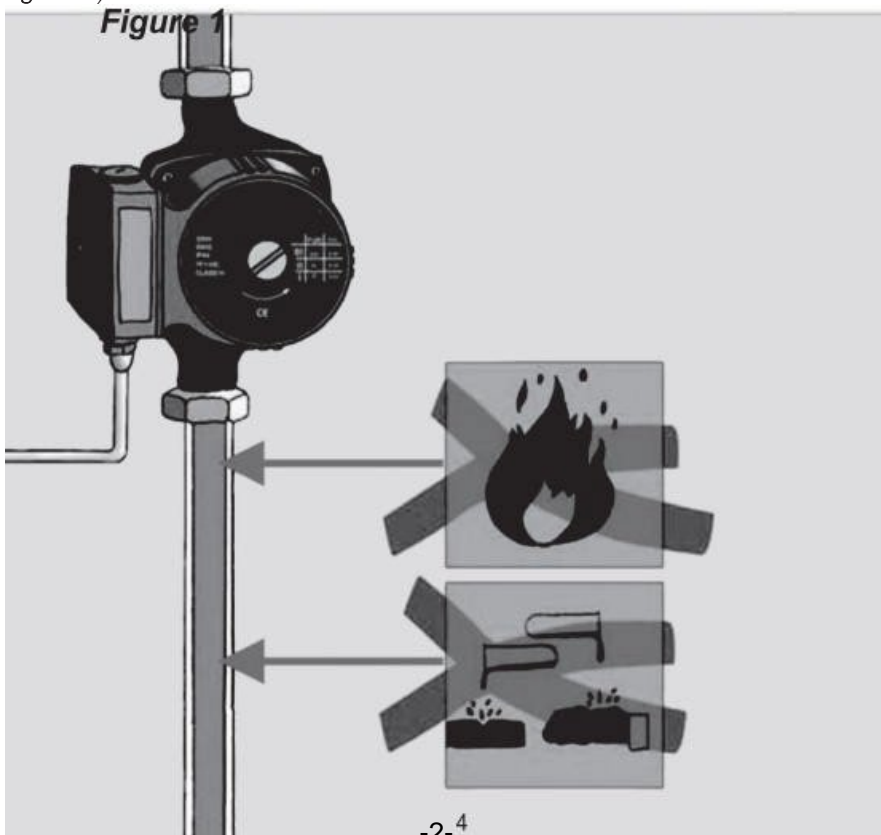
Warning-To reduce the risk of injury, user must read instructions manual carefully.

## ATTENTION

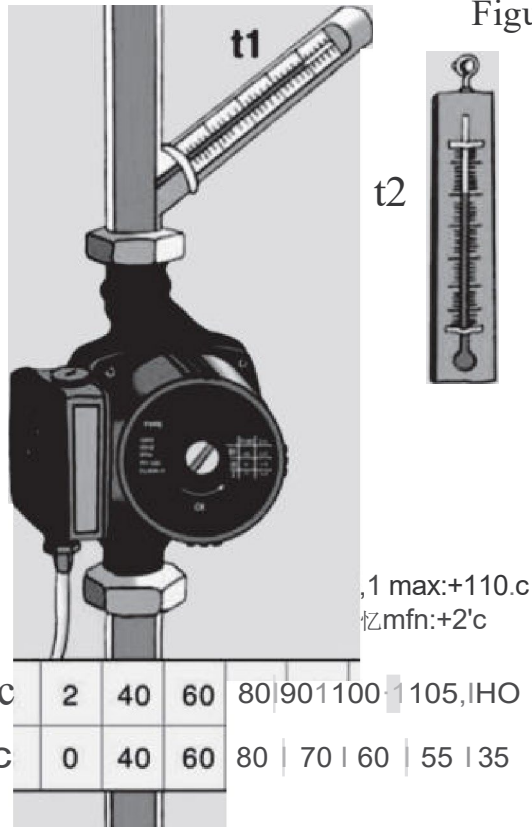
### Circulation Pump

#### 1. Using condition

- This pump uses water or liquid to lubricate. Therefore in the condition of no-water or no-liquid, operating shall not be exceed 10 seconds. (Figure 1)



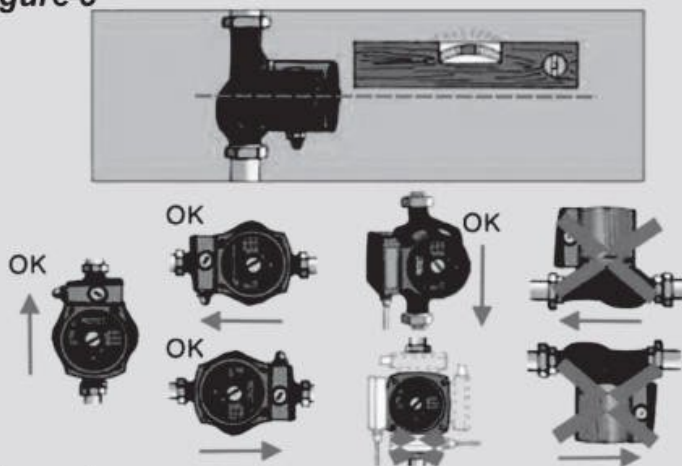
t1=pipe temperature  
 t2=ambient temperature  
 (Figure 2)



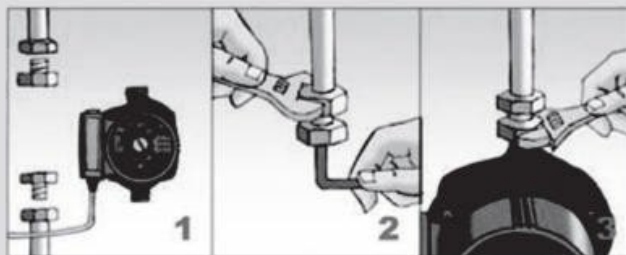
## 2. Installation

- Forbid to install upside down or motor downward, to avoid liquid leakage come into the interior of motor, causing short circuit and motor burnt (Figure 3)
- Putting into the cushion, screwing on the pipe fittings, fixing the water pump (Figure 4)

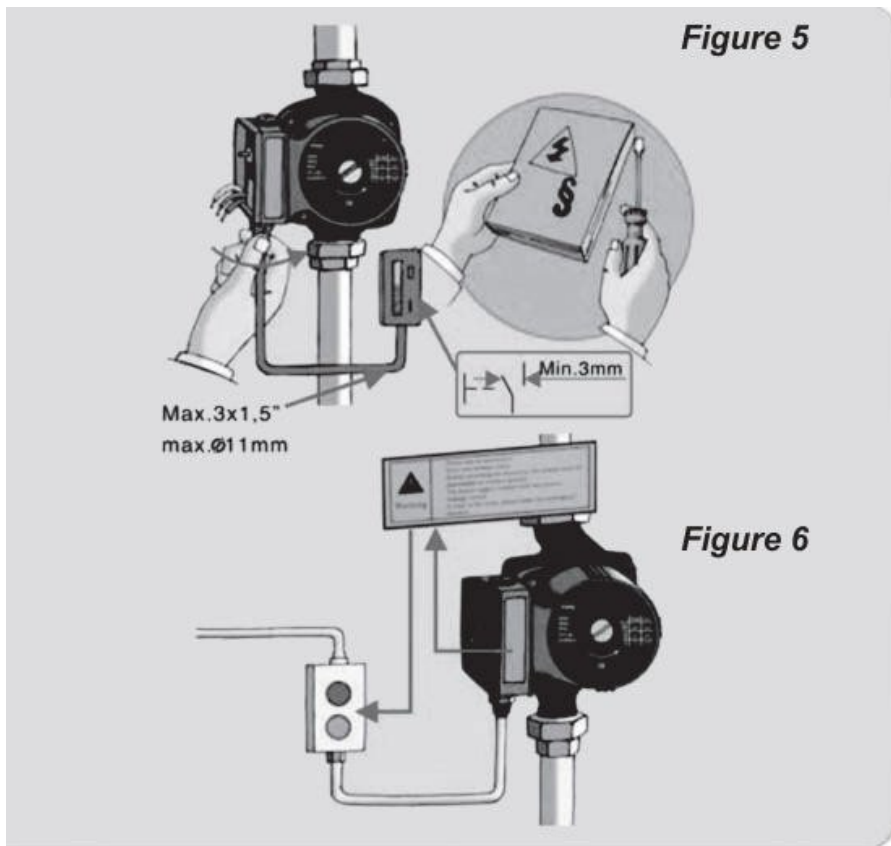
**Figure 3**



**Figure 4**

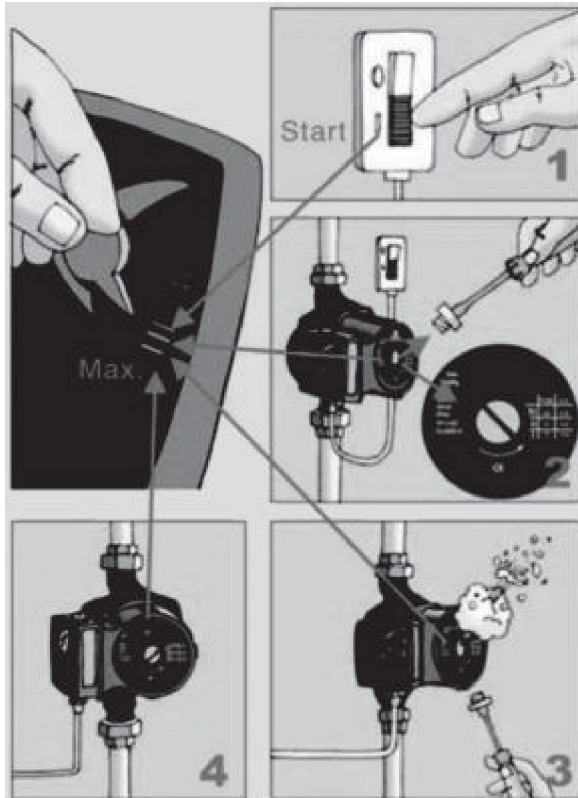


- Power outlet must be grounded, Should not modify on the machine grounding plug without authorization.(Figure 5)
- Reading the warnings carefully (Figure 6)



Starting the power, tum the switch into  $\text{|||}$  speed, then loosen off the air screw for venting.  
(Figure 7)

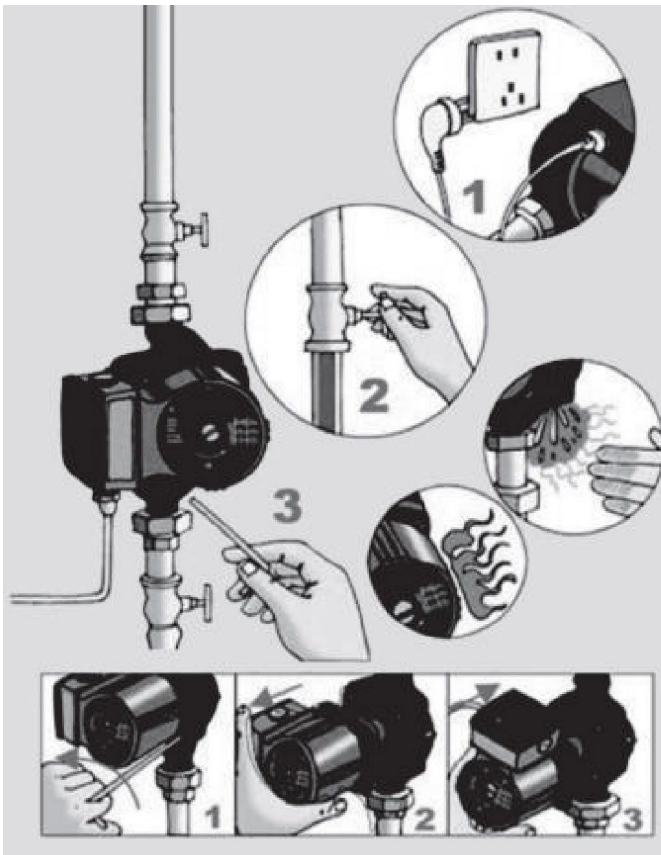
Figure 7



### 3. Disassemble and repair

Before repairing, must pull the plug first, cut off power, and close the inlet valve, remove the screw, then take out the damaged parts.(Figure 8)

Figure 8



<b>Fault</b>	<b>Cause</b>	<b>Remedy</b>
Pump fails to start	Supply failure.	Check fuses and possible loose electrical connections
	Capacitor is defective	Replace the capacitor.
	Pump blocked due to furred bearings.	Change over to maximum speed for a short period or free the rotor with a screwdriver inserted in the slot of the shaft end
	Impurities in the pump.	Dismantle and clean the pump.
Noise in the system	Pump flow setting is too high	Change over to a lower speed.
	Air in the system.	Vent the system.
Noise in the pump.	Air in the pump	Vent the pump.
	Inlet pressure too low	Increase the inlet pressure or check the air volume in the expansion tank (if installed).



-At high water temperatures and system pressures, close isolating valves at both pump ports. First, allow pump to cool down.

Noise

-Cavitation due to insufficient inlet pressure remedial actions:

-Increase system pressure within permissible limits.

-Check speed setting, if need be, adjust to a lower speed setting

If the fault cannot be located or rectified, please contact your nearest representatives.

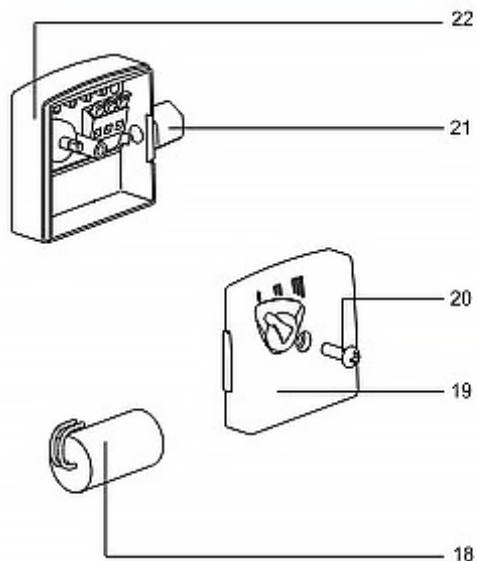
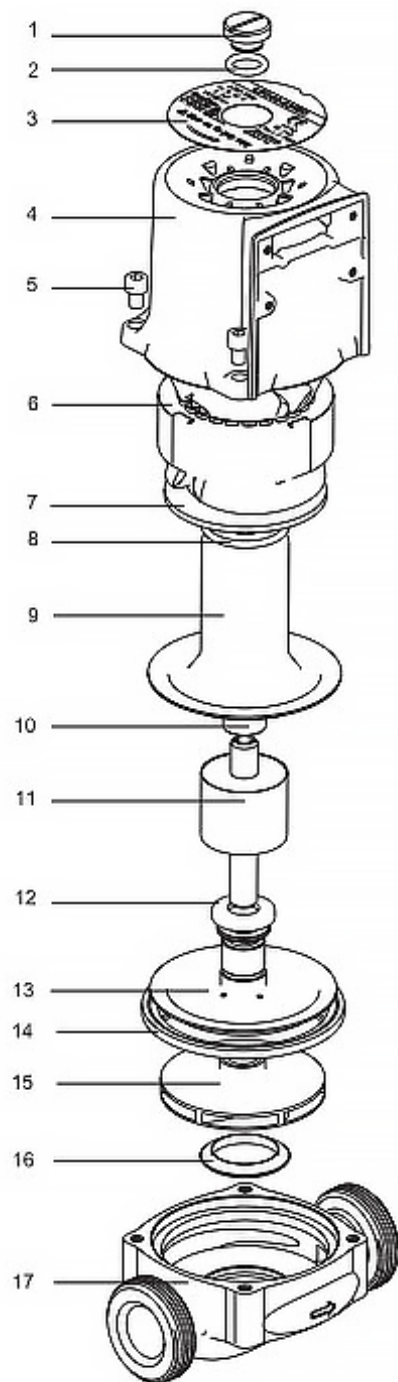
## SPECIFICATION PARAMETERS

Model	Input	Max Flow [l/min]	Max Head [m]	Outlet Size
LPS25-4S/180	AC220-240V 50HZ	50	4	1-1/2"
LPS25-6S/180	AC220-240V 50HZ	60	6	1-1/2"



### **Correct Disposal**

This product is subject to the provision of european Directive 2012/19/EU. The symbol showing a wheelie bin crossed through indicates that the product requires separate refuse collection in the European Union. This applies to the product and all accessories marked with this symbol. Products marked as such may not be discarded with normal domestic waste, but must be taken to a collection point for recycling electrical and electronic devices.



- 1.Screw
- 2.Oring
- 3.Name plate
- 4.Motor housing
- 5.Screw
- 6.stator and winding
- 7.Flat
- 8.Oring
- 9.Rotor can
- 10.Graphite bearing
- 11.Rotor
- 12.Rotary ring
- 13.Bearing plate
- 14.Flat gasket
- 15.Impeller
- 16.Inlet ring
- 17.Pump body
- 18.Capacitor
- 19.Box cover
- 20.Screw
- 21.Rotary switch
- 22.Terminal box



# POMPE DE CIRCULATION INSTRUCTIONS



## POMPE DE CIRCULATION

Modèle : LPS25-4S/180, LPS25-6S/180



(L'image est à titre de référence uniquement, veuillez vous référer à l'objet réel)



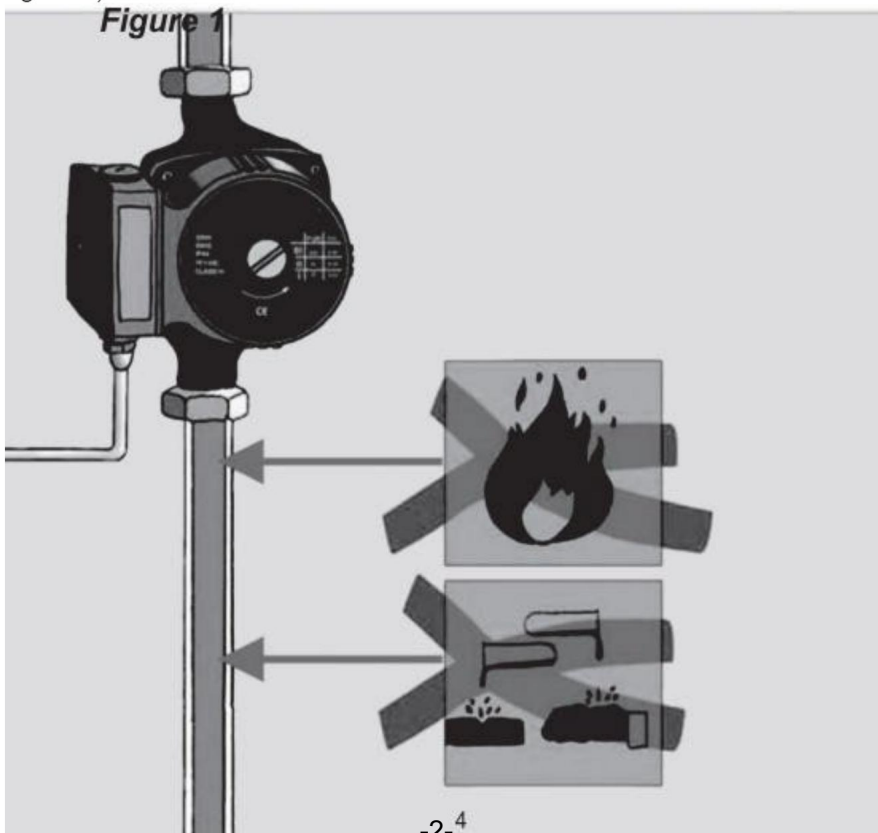
Avertissement - Pour réduire le risque de blessure, l'utilisateur doit lire attentivement le manuel d'instructions.

## ATTENTION

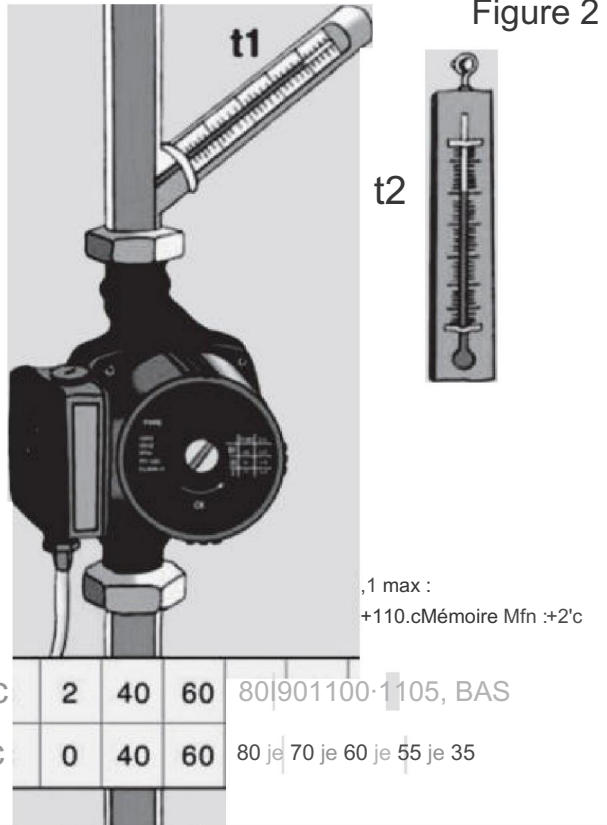
### *Circulation Pump*

#### *1. Using condition*

- *This pump uses water or liquid to lubricate. Therefore in the condition of no-water or no-liquid, operating shall not be exceed 10 seconds. (Figure 1)*



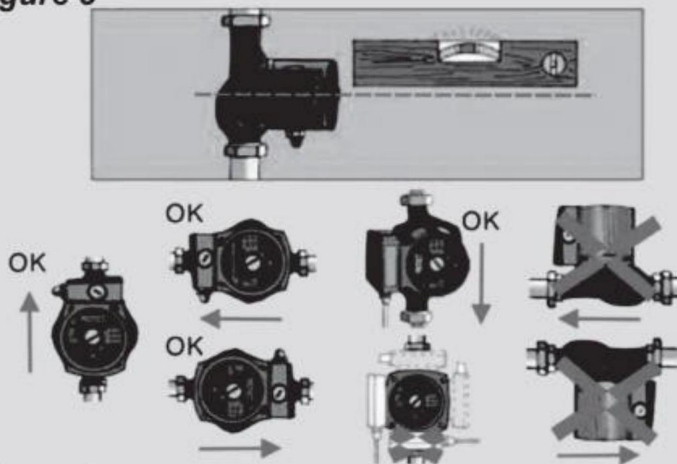
t1=température du tuyau  
 t2=température ambiante  
 (Figure 2)



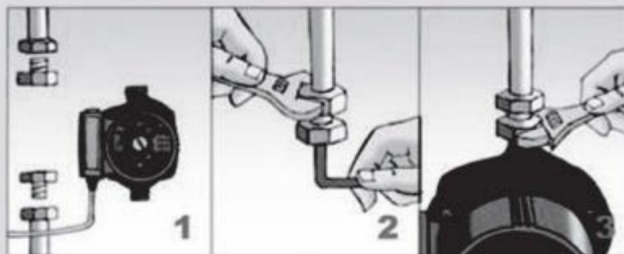
## 2. Installation

- Il est interdit d'installer le moteur à l'envers ou vers le bas, afin d'éviter que du liquide ne pénètre à l'intérieur du moteur, provoquant un court-circuit et la combustion du moteur (Figure 3)
- Mise en place du coussin, vissage des raccords de tuyauterie, fixation de la pompe à eau (Figure 4)

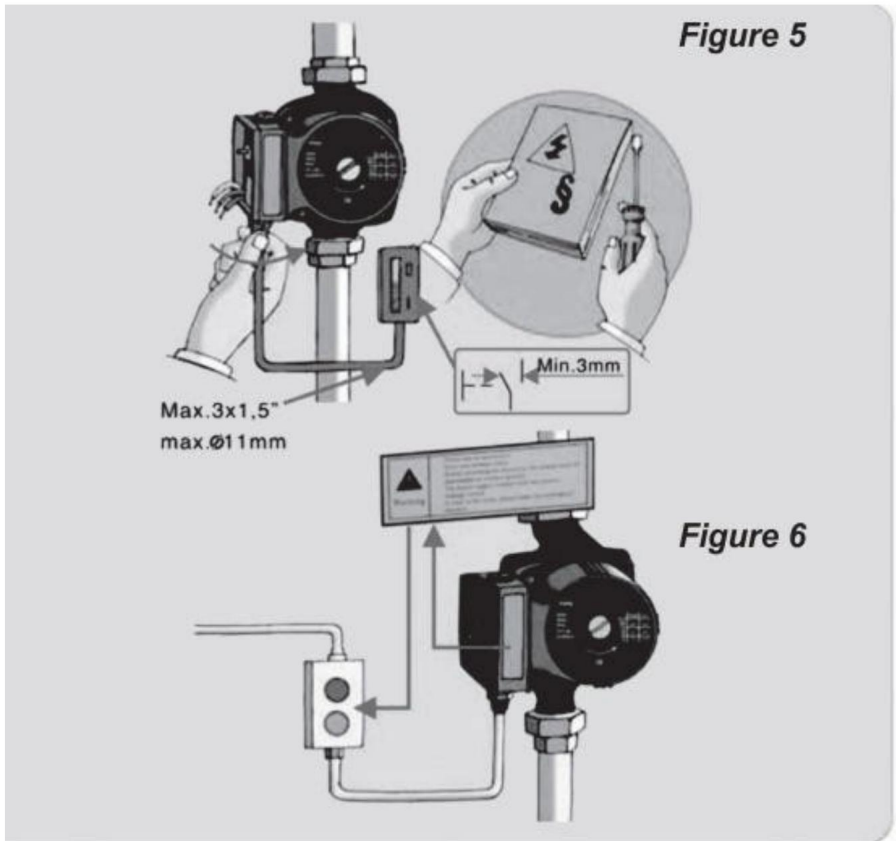
**Figure 3**



**Figure 4**



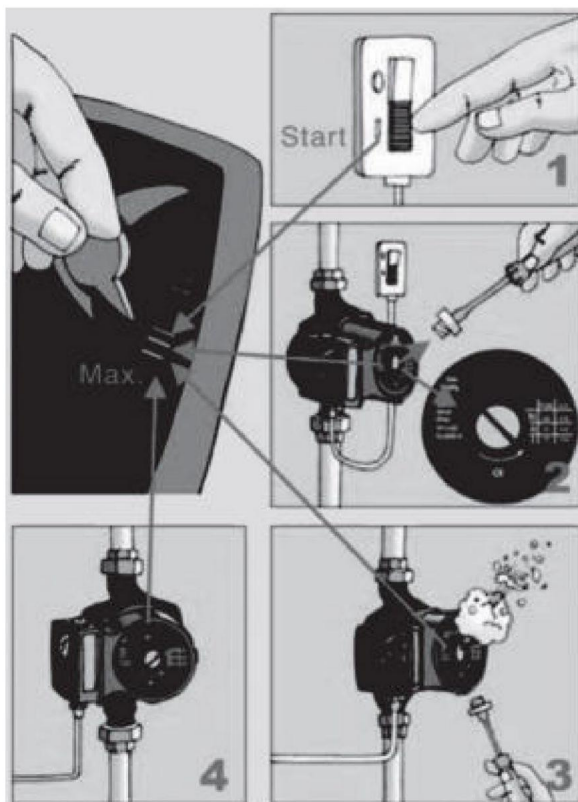
- La prise de courant doit être mise à la terre. Ne modifiez pas la prise de terre de la machine sans autorisation. (Figure 5)
- Lire attentivement les avertissements (Figure 6)



Après avoir démarré l'appareil, placez l'interrupteur sur la vitesse désirée, puis desserrez la vis d'air pour la ventilation.

(Figure 7)

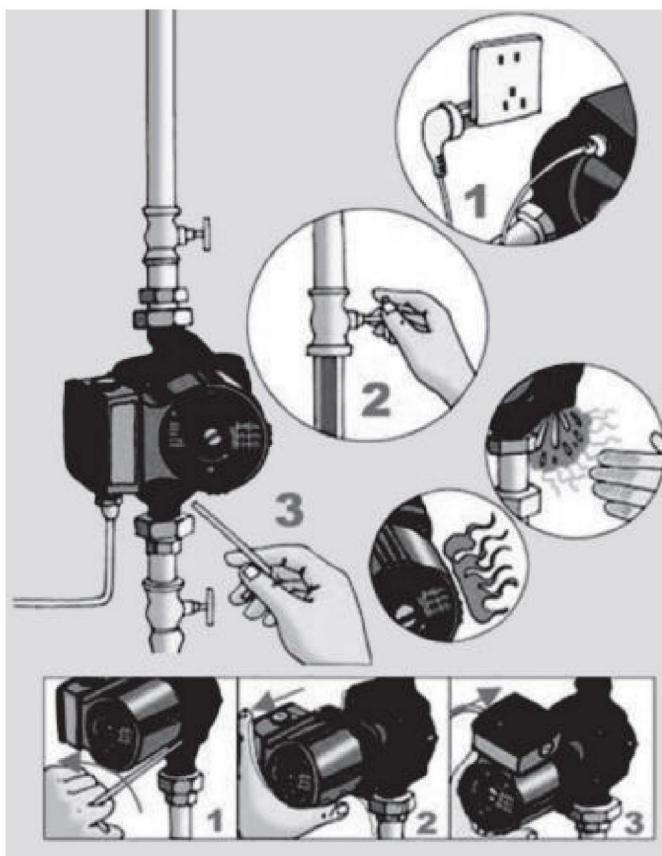
Figure 7



### 3. Démonter et réparer

Avant de procéder à la réparation, vous devez d'abord débrancher la prise, couper l'alimentation électrique, fermer la soupape d'admission, retirer la vis, puis retirer les pièces endommagées. (Figure 8)

Figure 8



<b>Fault</b>	<b>Cause</b>	<b>Remedy</b>
Pump fails to start	Supply failure.	Check fuses and possible loose electrical connections
	Capacitor is defective	Replace the capacitor.
	Pump blocked due to furred bearings.	Change over to maximum speed for a short period or free the rotor with a screwdriver inserted in the slot of the shaft end
	Impurities in the pump.	Dismantle and clean the pump.
Noise in the system	Pump flow setting is too high	Change over to a lower speed.
	Air in the system.	Vent the system.
Noise in the pump.	Air in the pump	Vent the pump.
	Inlet pressure too low	Increase the inlet pressure or check the air volume in the expansion tank (if installed).

À coeur ouvert températures d'eau et pressions du système élevées, fermez les vannes d'isolement à les deux ports de la pompe. Laissez d'abord refroidir la pompe.

Bruit

- Cavitation due à une pression d'entrée insuffisante : mesures correctives :

-Augmenter la pression du système dans les limites autorisées.

-Vérifiez le réglage de la vitesse, si nécessaire, ajustez-le à une vitesse inférieure

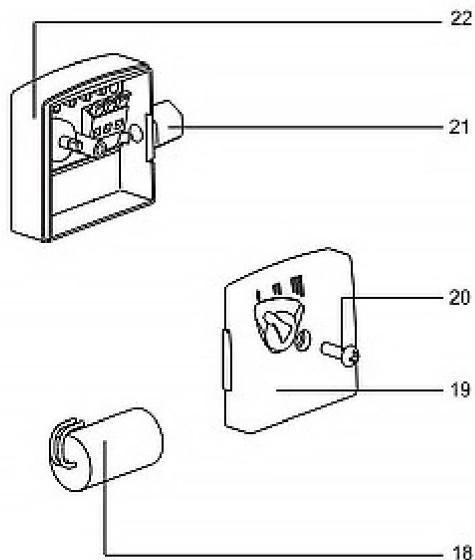
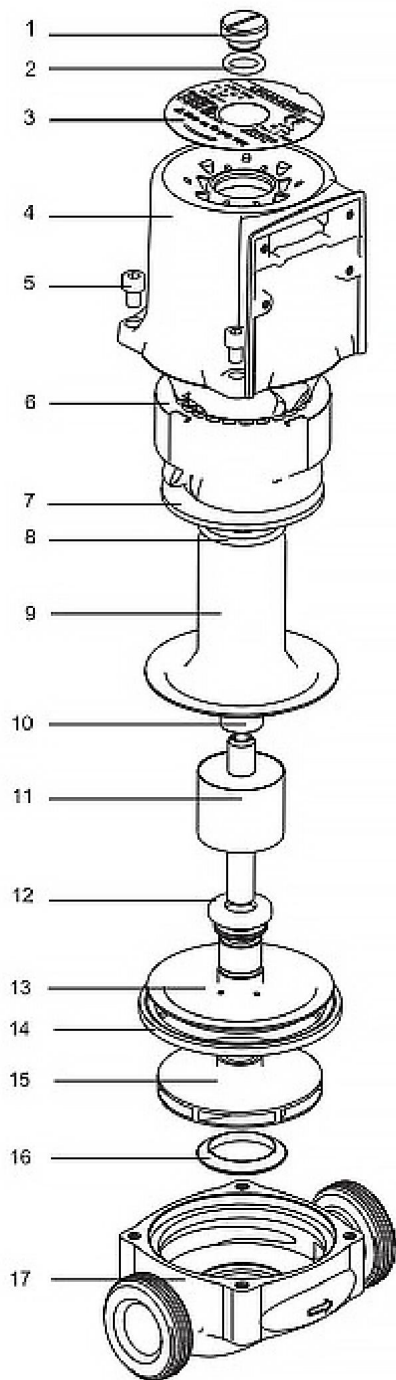
Si le défaut ne peut pas être localisé ou corrigé, veuillez contacter vos représentants les plus proches.

## PARAMÈTRES DE SPÉCIFICATION

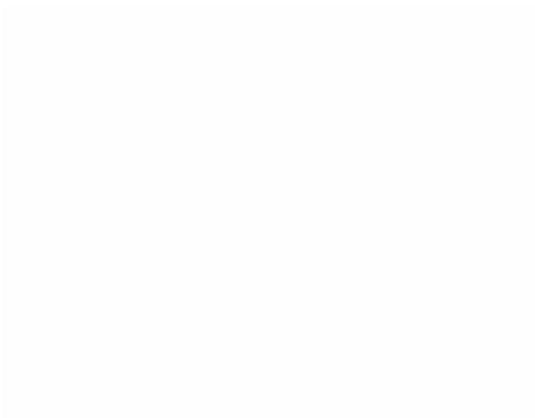
Modèle	Saisir	Débit maximal [l/min]	Tête max [m]	Taille de sortie
LPS25-4S/180	220-240 V CA 50 Hz	50	4	1-1/2"
LPS25-6S/180	220-240 V CA 50 Hz	60	6	1-1/2"

**Élimination correcte**

Ce produit est soumis aux dispositions de la directive européenne 2012/19/UE. Le symbole représentant une poubelle à roulettes barrée indique que le produit nécessite une collecte séparée des déchets dans le Union européenne. Ceci s'applique au produit et à tous les accessoires marqués de ce symbole. Les produits marqués comme tels ne peuvent pas être jeté avec les ordures ménagères normales, mais doit être apporté à un point de collecte pour le recyclage des appareils électriques et électroniques.



- 1.Screw
- 2.Oring
- 3.Name plate
- 4.Motor housing
- 5.Screw
- 6.stator and winding
- 7.Flat
- 8.Oring
- 9.Rotor can
- 10.Graphite bearing
- 11.Rotor
- 12.Rotary ring
- 13.Bearing plate
- 14.Flat gasket
- 15.Impeller
- 16.Inlet ring
- 17.Pump body
- 18.Capacitor
- 19.Box cover
- 20.Screw
- 21.Rotary switch
- 22.Terminal box



# **Umwälzpumpe**

## **ANWEISUNGEN**

## Umwälzpumpe

Modell: LPS25-4S/180, LPS25-6S/180



(Das Bild dient nur als Referenz, bitte beziehen Sie sich auf das tatsächliche Objekt)



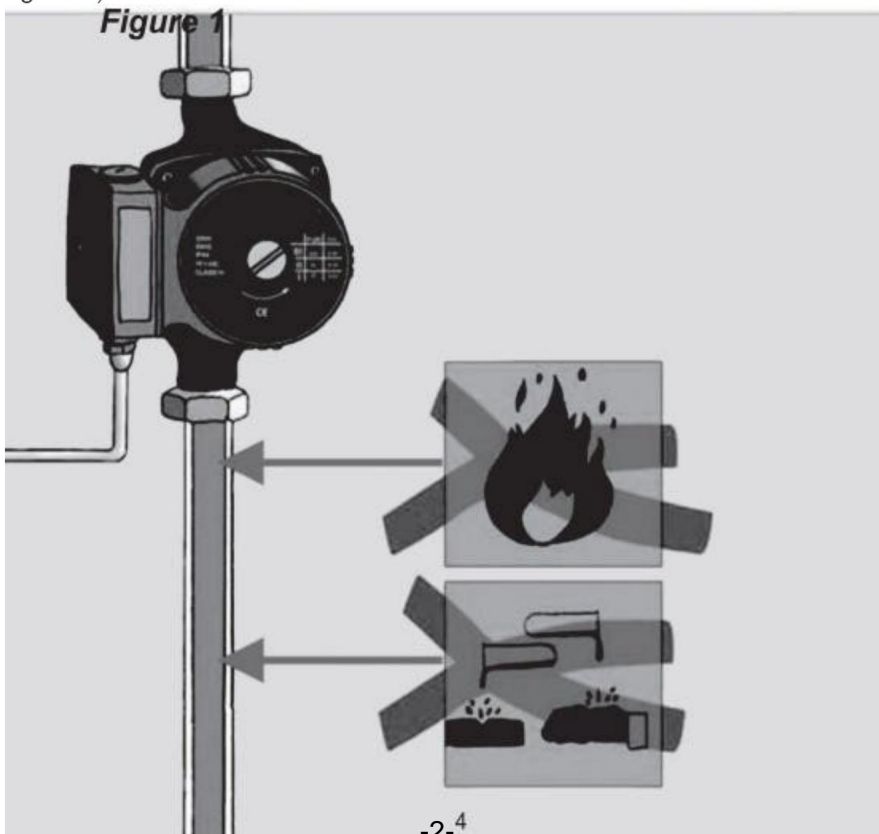
Warnung: Um das Verletzungsrisiko zu verringern, muss der Benutzer die Bedienungsanleitung sorgfältig lesen.

## AUFMERKSAMKEIT

### Circulation Pump

#### 1. Using condition

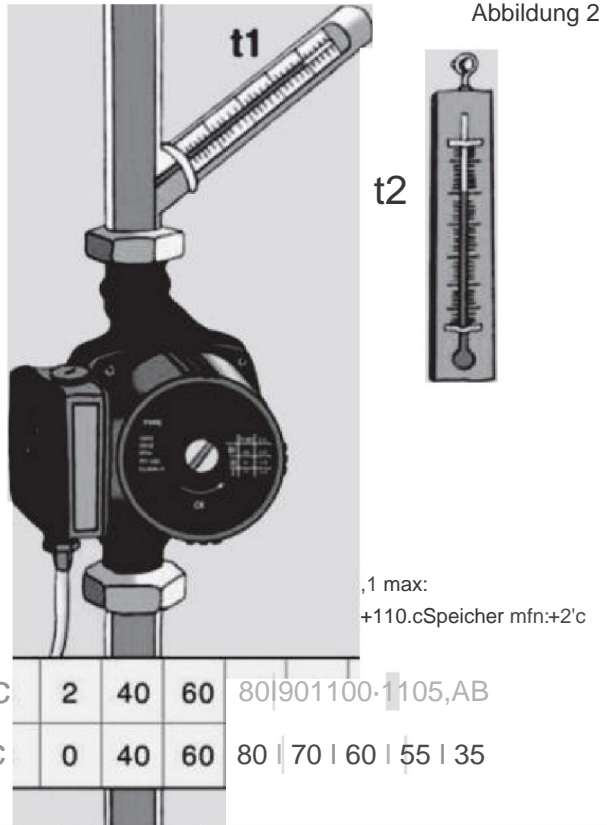
- This pump uses water or liquid to lubricate. Therefore in the condition of no-water or no-liquid, operating shall not be exceed 10 seconds. (Figure 1)



$t_1$  = Rohrtemperatur

$t_2$  = Umgebungstemperatur

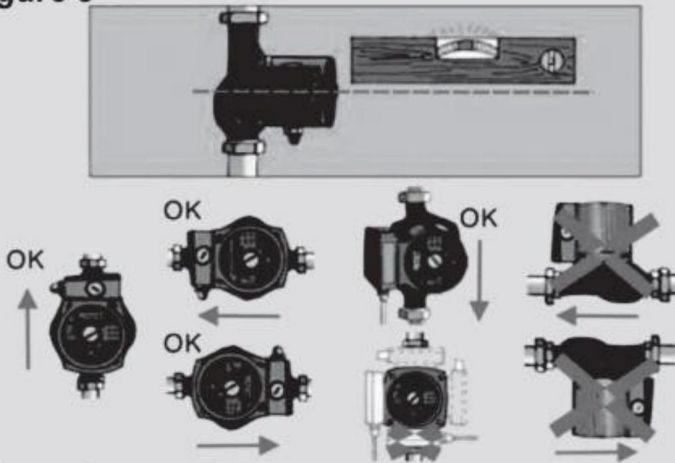
(Abbildung 2)



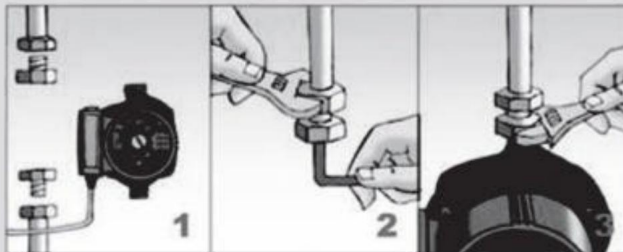
## 2. Installation

- Nicht verkehrt herum oder mit dem Motor nach unten einbauen, da sonst Flüssigkeit ins Innere des Motors gelangen kann, was zu Kurzschlüssen und einem Durchbrennen des Motors führen kann (Abbildung 3).
- Einlegen in das Kissen, Anschrauben der Rohrverschraubungen, Fixieren der Wasserpumpe (Bild 4)

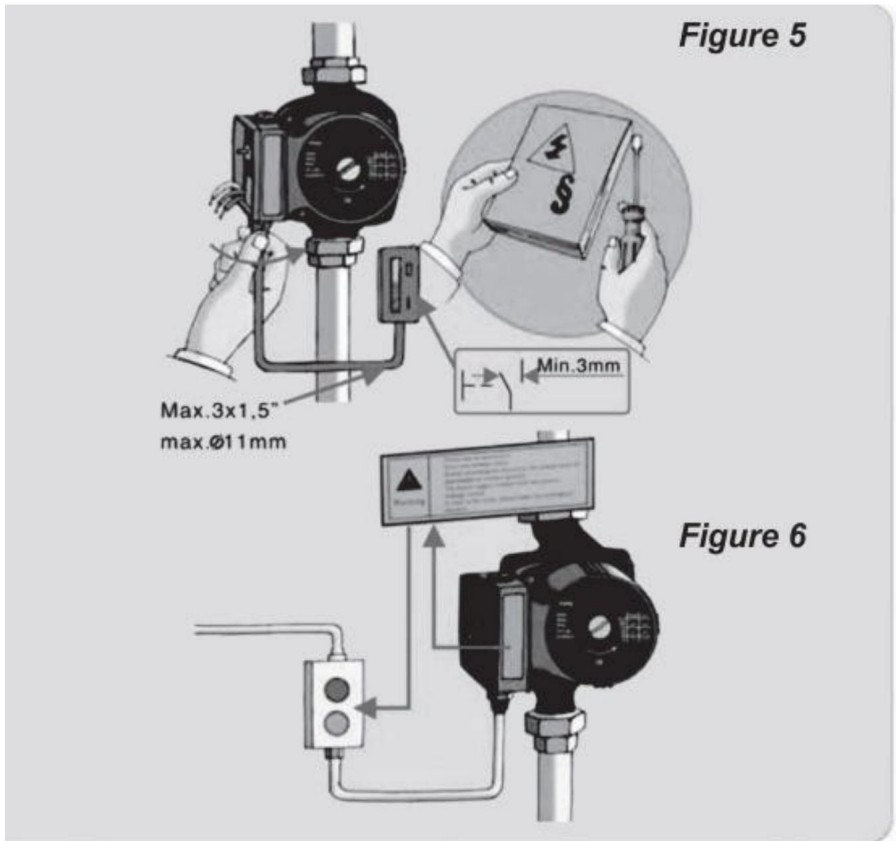
**Figure 3**



**Figure 4**



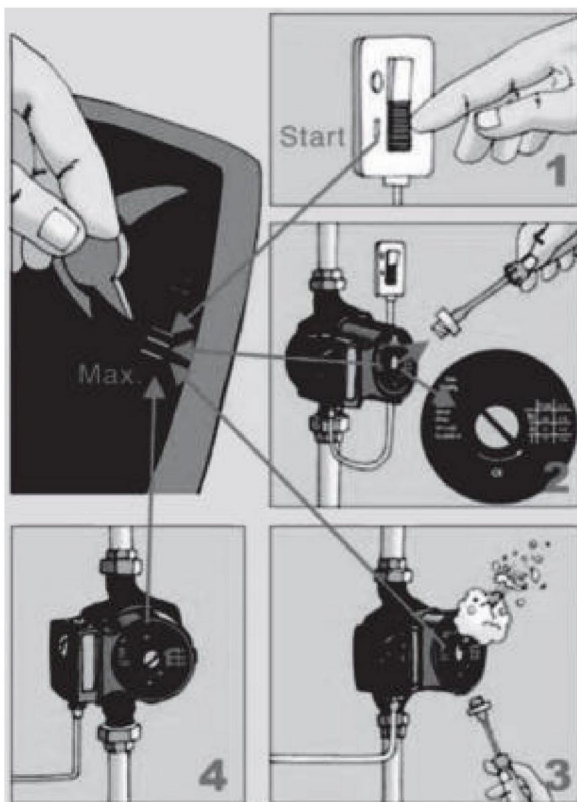
- Die Steckdose muss geerdet sein. Der Erdungsstecker der Maschine darf nicht eigenmächtig verändert werden. (Abbildung 5)
- Lesen Sie die Warnhinweise sorgfältig durch (Abbildung 6)



ÿSchalten Sie den Schalter nach dem Einschalten auf „Geschwindigkeit“ und lösen Sie dann die Luftschraube zum Entlüften.

(Abbildung 7)

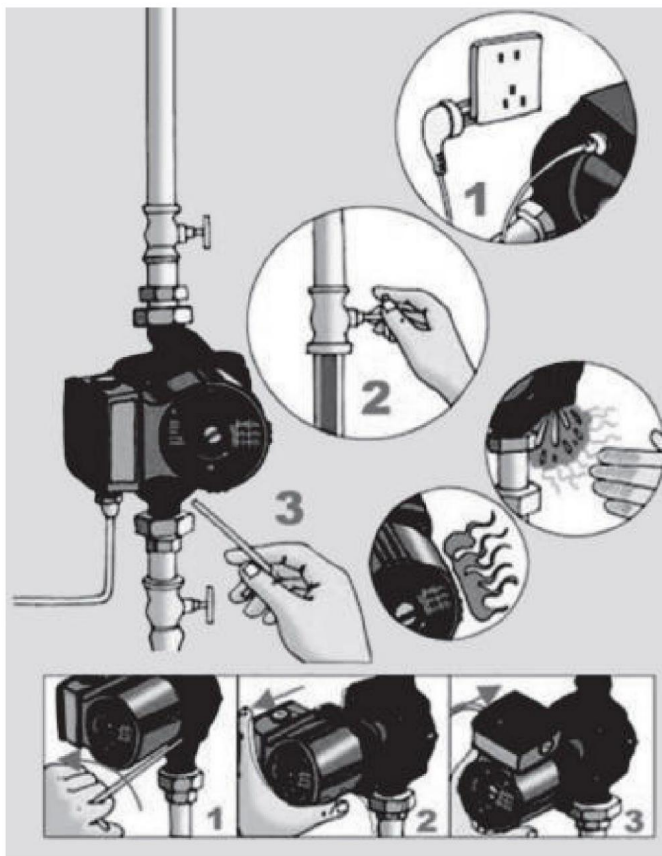
Abbildung 7



### 3. Demontage und Reparatur

Vor der Reparatur müssen Sie zuerst den Stecker ziehen, die Stromzufuhr unterbrechen und das Einlassventil schließen, die Schraube entfernen und dann die beschädigten Teile herausnehmen. (Abbildung 8)

Abbildung 8



<b>Fault</b>	<b>Cause</b>	<b>Remedy</b>
<b>Pump fails to start</b>	<b>Supply failure.</b>	<b>Check fuses and possible loose electrical connections</b>
	<b>Capacitor is defective</b>	<b>Replace the capacitor.</b>
	<b>Pump blocked due to furred bearings.</b>	<b>Change over to maximum speed for a short period or free the rotor with a screwdriver inserted in the slot of the shaft end</b>
	<b>Impurities in the pump.</b>	<b>Dismantle and clean the pump.</b>
<b>Noise in the system</b>	<b>Pump flow setting is too high</b>	<b>Change over to a lower speed.</b>
	<b>Air in the system.</b>	<b>Vent the system.</b>
<b>Noise in the pump.</b>	<b>Air in the pump</b>	<b>Vent the pump.</b>
	<b>Inlet pressure too low</b>	<b>Increase the inlet pressure or check the air volume in the expansion tank (if installed).</b>

**Von Herzen Bei hohen Wassertemperaturen und Systemdrücken schließen Sie die Absperrventile beide Pumpenanschlüsse. Pumpe zunächst abkühlen lassen.**

Lärm

-Kavitation aufgrund unzureichenden Eingangsdrucks – Abhilfemaßnahmen:

-Erhöhen Sie den Systemdruck innerhalb der zulässigen Grenzen.

-Geschwindigkeitseinstellung prüfen, ggf. auf eine niedrigere Geschwindigkeitseinstellung umstellen

Kann der Fehler nicht lokalisiert oder behoben werden, wenden Sie sich bitte an Ihre nächstgelegene Vertretung.

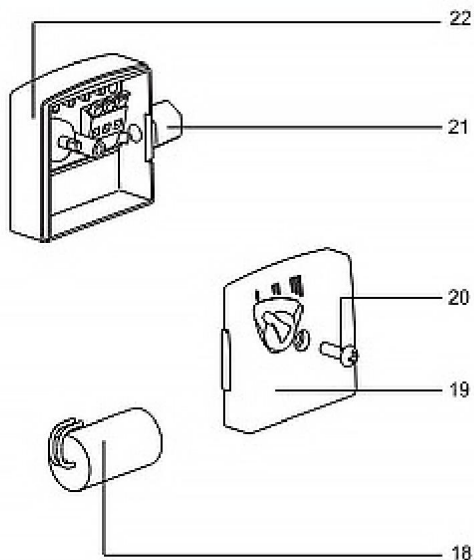
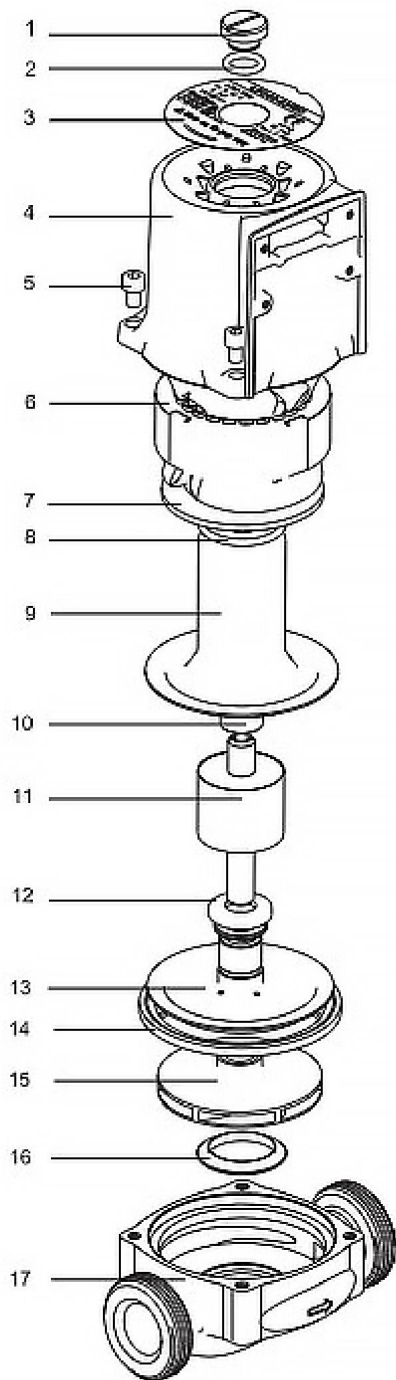
## SPEZIFIKATIONSPARAMETER

Modell	Eingang	Maximaler Durchfluss [l/min]	Maximaler Kopf [M]	Auslassgröße
LPS25-4S/180	Wechselstrom 220-240 V 50 Hz	50	4	1-1/2 Zoll
LPS25-6S/180	Wechselstrom 220-240 V 50 Hz	60	6	1-1/2 Zoll



### Richtige Entsorgung

Dieses Produkt unterliegt den Bestimmungen der europäischen Richtlinie 2012/19/EU. Das Symbol einer durchgestrichenen Mülltonne weist darauf hin, dass das Produkt einer getrennten Müllentsorgung im Europäische Union. Dies gilt für das Produkt und alle Zubehörteile gekennzeichnet. Produkte, die mit diesem Symbol gekennzeichnet sind, dürfen nicht mit dem normalen Hausmüll entsorgt werden, sondern müssen eine Sammelstelle für das Recycling von elektrischen und elektronischen Geräten.



- 1.Screw
- 2.Oring
- 3.Name plate
- 4.Motor housing
- 5.Screw
- 6.stator and winding
- 7.Flat
- 8.Oring
- 9.Rotor can
- 10.Graphite bearing
- 11.Rotor
- 12.Rotary ring
- 13.Bearing plate
- 14.Flat gasket
- 15.Impeller
- 16.Inlet ring
- 17.Pump body
- 18.Capacitor
- 19.Box cover
- 20.Screw
- 21.Rotary switch
- 22.Terminal box



# **POMPA CIRCOLATORE ISTRUZIONI**

## POMPA CIRCOLATORE

Modello: LPS25-4S/180, LPS25-6S/180



(L'immagine è solo di riferimento, fare riferimento all'oggetto reale)



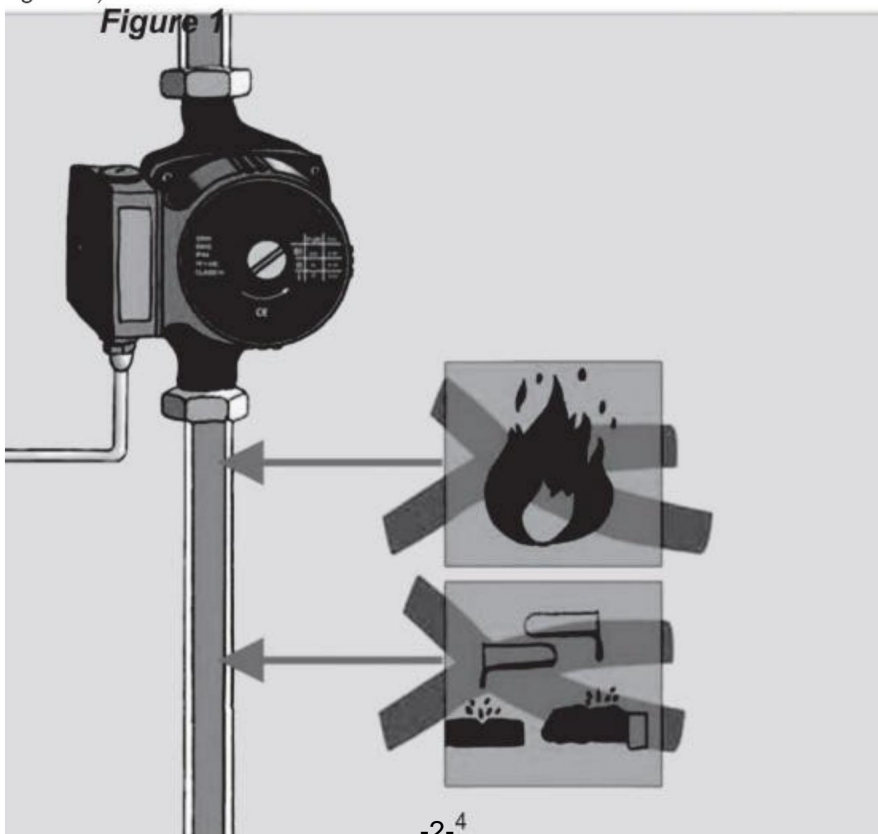
Attenzione: per ridurre il rischio di lesioni, l'utente deve leggere attentamente il manuale di istruzioni.

## ATTENZIONE

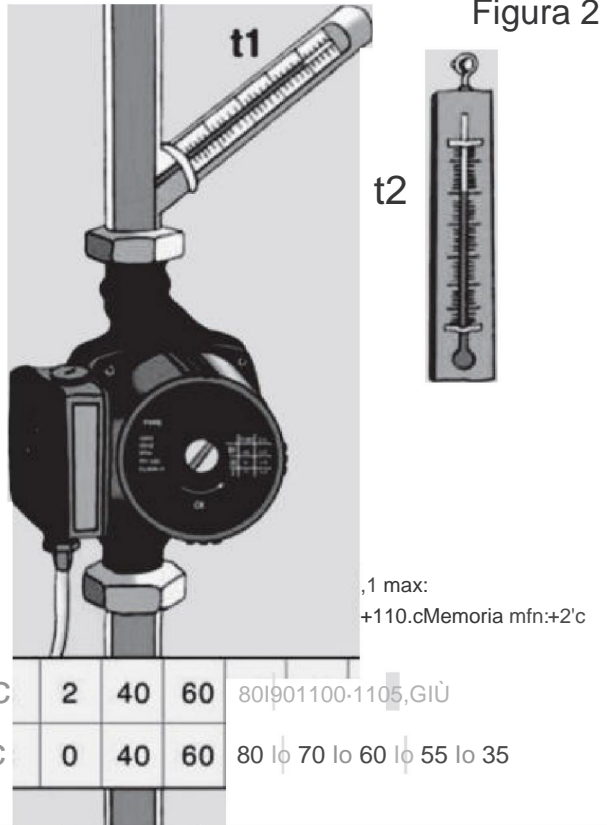
### *Circulation Pump*

#### *1. Using condition*

- *This pump uses water or liquid to lubricate. Therefore in the condition of no-water or no-liquid, operating shall not be exceed 10 seconds. (Figure 1)*



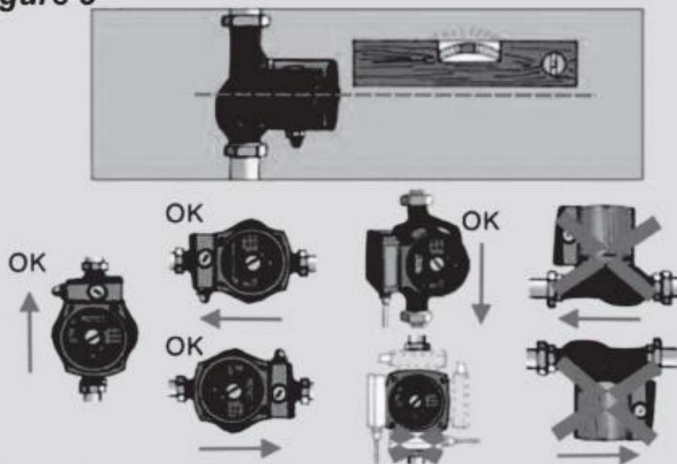
t1=temperatura del tubo  
 t2=temperatura ambiente  
 (Figura 2)



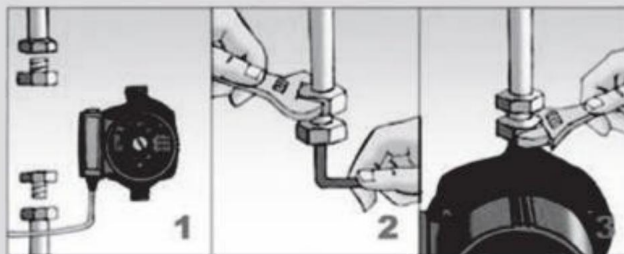
## 2. Installazione

- Vietare l'installazione capovolta o con motore rivolto verso il basso, per evitare che perdite di liquido penetrino all'interno del motore, causando cortocircuiti e bruciature del motore (Figura 3)
- Inserimento nel cuscino, avvvitamento dei raccordi dei tubi, fissaggio della pompa dell'acqua (Figura 4)

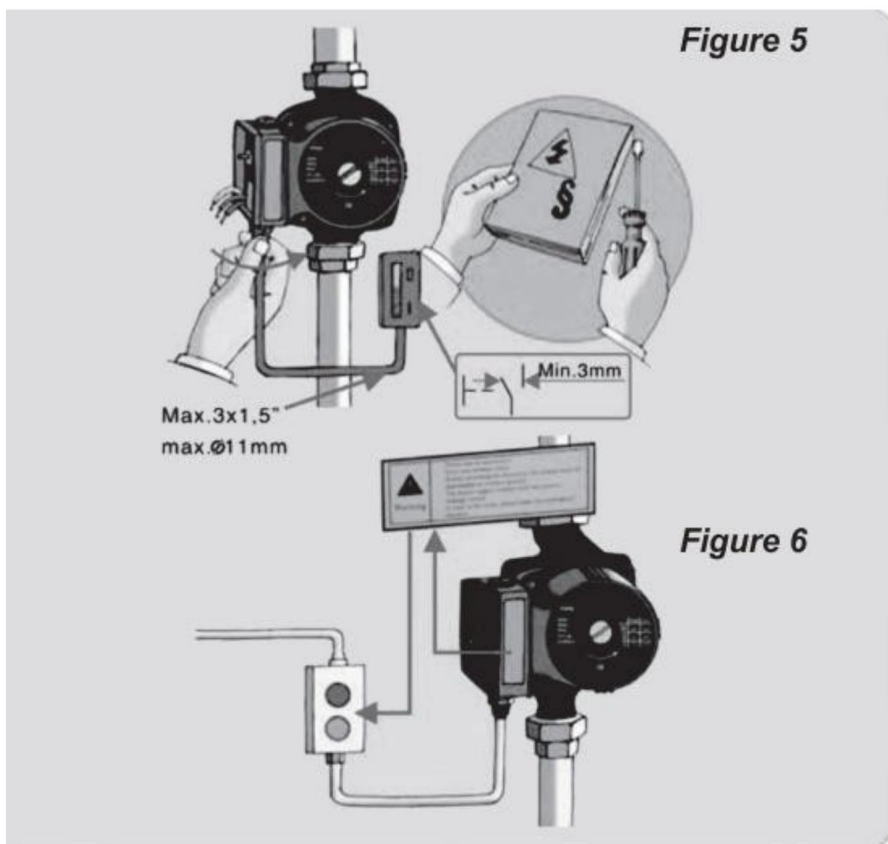
**Figure 3**



**Figure 4**



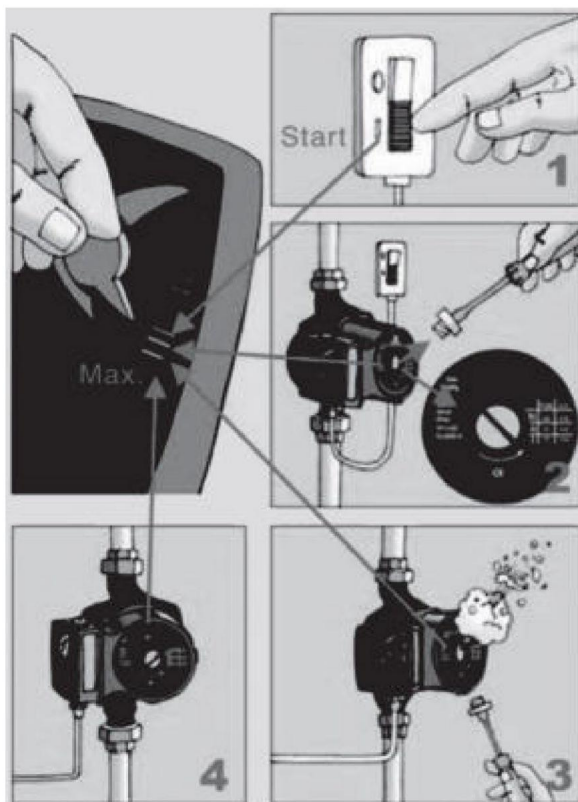
- La presa di corrente deve essere dotata di messa a terra. Non modificare la spina di messa a terra della macchina senza autorizzazione. (Figura 5)
- Leggere attentamente le avvertenze (Figura 6)



Per accendere l'apparecchio, portare l'interruttore su "velocità massima", quindi allentare la vite dell'aria per lo sfiato.

(Figura 7)

Figura 7





<b>Fault</b>	<b>Cause</b>	<b>Remedy</b>
Pump fails to start	Supply failure.	Check fuses and possible loose electrical connections
	Capacitor is defective	Replace the capacitor.
	Pump blocked due to furred bearings.	Change over to maximum speed for a short period or free the rotor with a screwdriver inserted in the slot of the shaft end
	Impurities in the pump.	Dismantle and clean the pump.
Noise in the system	Pump flow setting is too high	Change over to a lower speed.
	Air in the system.	Vent the system.
Noise in the pump.	Air in the pump	Vent the pump.
	Inlet pressure too low	Increase the inlet pressure or check the air volume in the expansion tank (if installed).

**Cuore-A** temperature dell'acqua elevate e pressioni del sistema, chiudere le valvole di isolamento

entrambe le porte della pompa. Per prima cosa, lasciare raffreddare la pompa.

Rumore

-Azioni correttive per la cavitazione dovuta a pressione di ingresso insufficiente:

-Aumentare la pressione del sistema entro i limiti consentiti.

-Controllare l'impostazione della velocità, se necessario, regolare su un'impostazione di velocità inferiore

Se non è possibile individuare o risolvere il guasto, contattare il rappresentante più vicino.

## PARAMETRI DI SPECIFICA

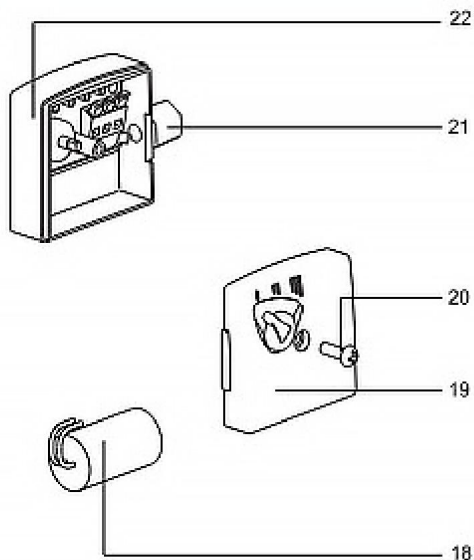
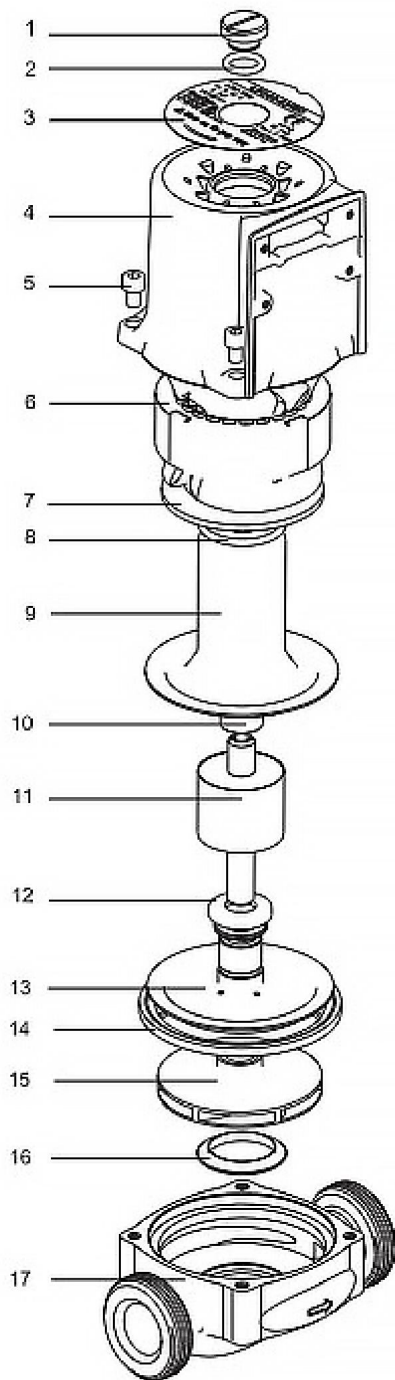
Modello	Ingresso	Flusso massimo [l/min]	Testa massima [M]	Dimensioni della presa
LPS25-4S/180	AC220-240V 50 Hz	50	4	1-1/2"
LPS25-6S/180	AC220-240V 50 Hz	60	6	1-1/2"



### **Smaltimento corretto**

Questo prodotto è soggetto alle disposizioni della Direttiva Europea 2012/19/UE. Il simbolo raffigurante un bidone della spazzatura barrato indica che il prodotto richiede una raccolta differenziata dei rifiuti Unione Europea. Ciò si applica al prodotto e a tutti gli accessori

contrassegnati con questo simbolo. I prodotti contrassegnati come tali non possono essere smaltiti insieme ai normali rifiuti domestici, ma deve essere portato un punto di raccolta per il riciclaggio di apparecchiature elettriche ed elettroniche.



- 1.Screw
- 2.Oring
- 3.Name plate
- 4.Motor housing
- 5.Screw
- 6.stator and winding
- 7.Flat
- 8.Oring
- 9.Rotor can
- 10.Graphite bearing
- 11.Rotor
- 12.Rotary ring
- 13.Bearing plate
- 14.Flat gasket
- 15.Impeller
- 16.Inlet ring
- 17.Pump body
- 18.Capacitor
- 19.Box cover
- 20.Screw
- 21.Rotary switch
- 22.Terminal box



# BOMBA CIRCULADORA INSTRUCCIONES

## BOMBA CIRCULADORA

Modelo: LPS25-4S/180, LPS25-6S/180



(La imagen es solo de referencia, consulte el objeto real)



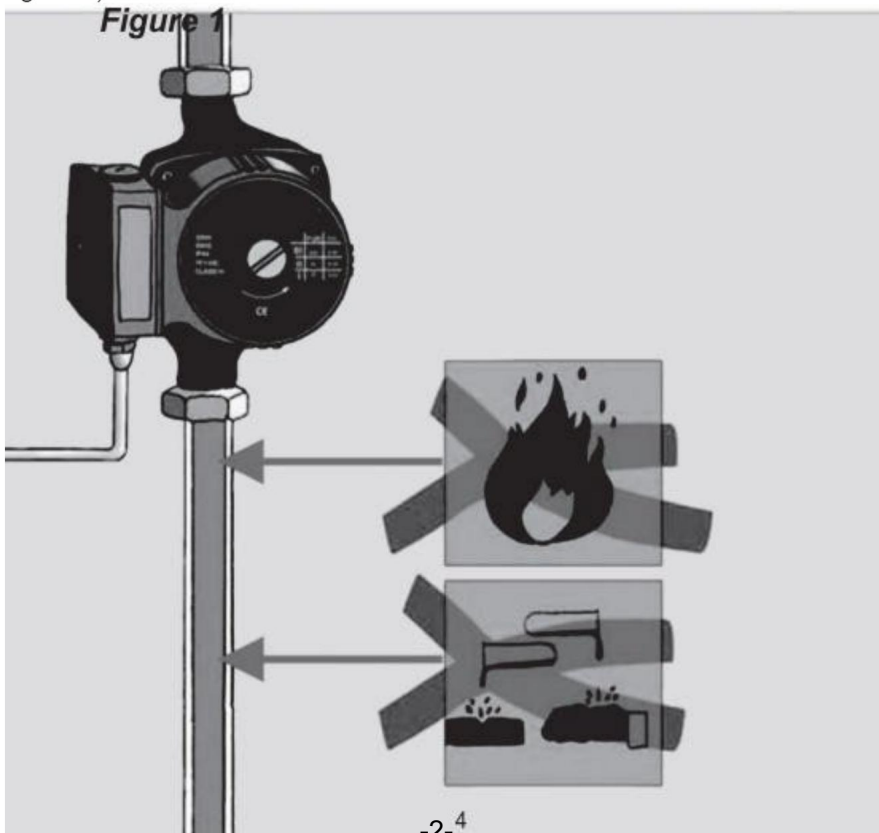
Advertencia: Para reducir el riesgo de lesiones, el usuario debe leer atentamente el manual de instrucciones.

## ATENCIÓN

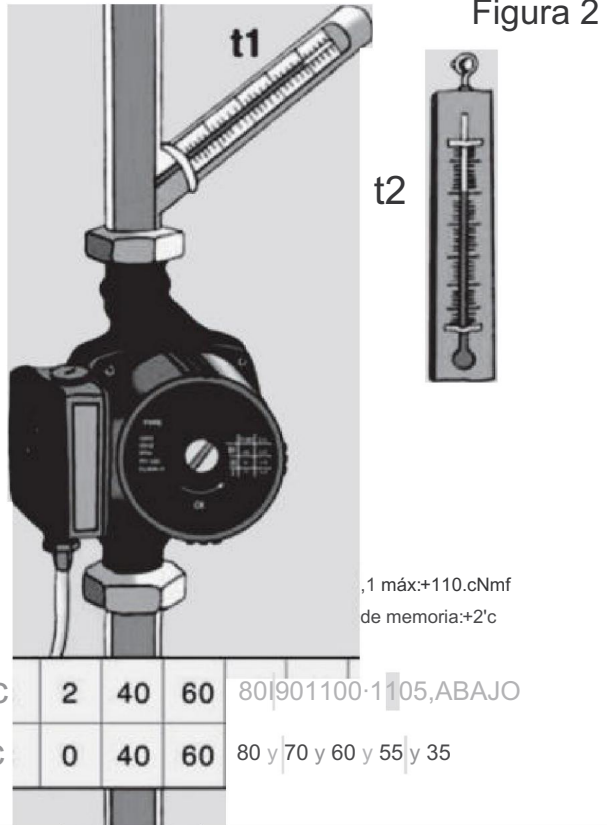
### *Circulation Pump*

#### *1. Using condition*

- *This pump uses water or liquid to lubricate. Therefore in the condition of no-water or no-liquid, operating shall not be exceed 10 seconds. (Figure 1)*



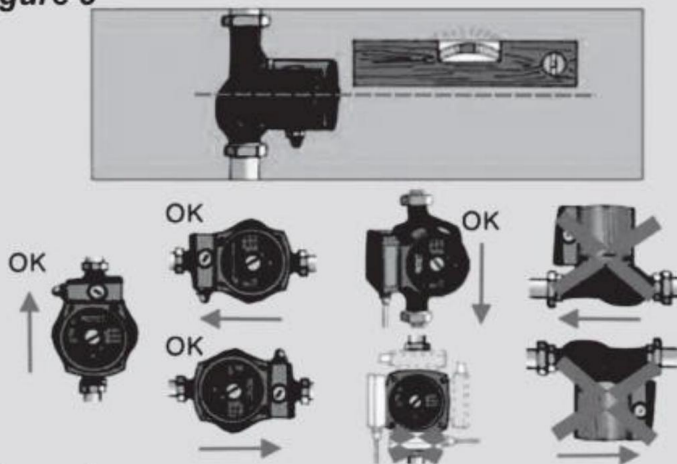
t1=temperatura de la tubería  
 t2=temperatura ambiente  
 (Figura 2)



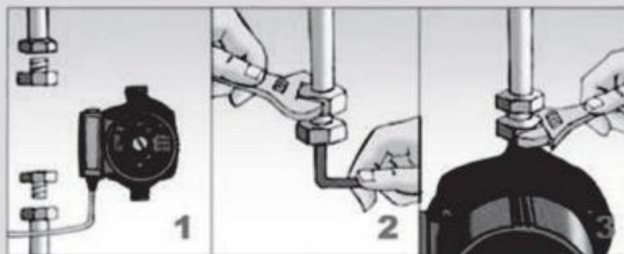
## 2.Instalación

- Está prohibido instalarlo al revés o con el motor boca abajo, para evitar que entre líquido en el interior del motor, lo que provocaría un cortocircuito y que el motor se quemara (Figura 3).
- Colocación del cojín, enroscado de los racores de las tuberías, fijación de la bomba de agua (Figura 4)

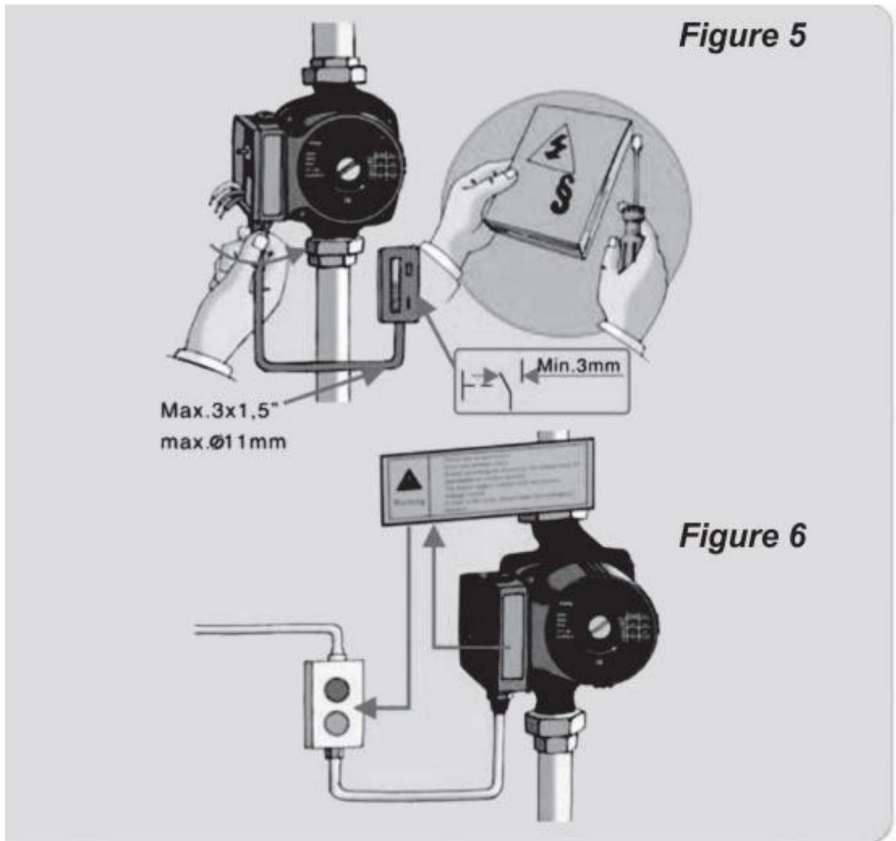
**Figure 3**



**Figure 4**



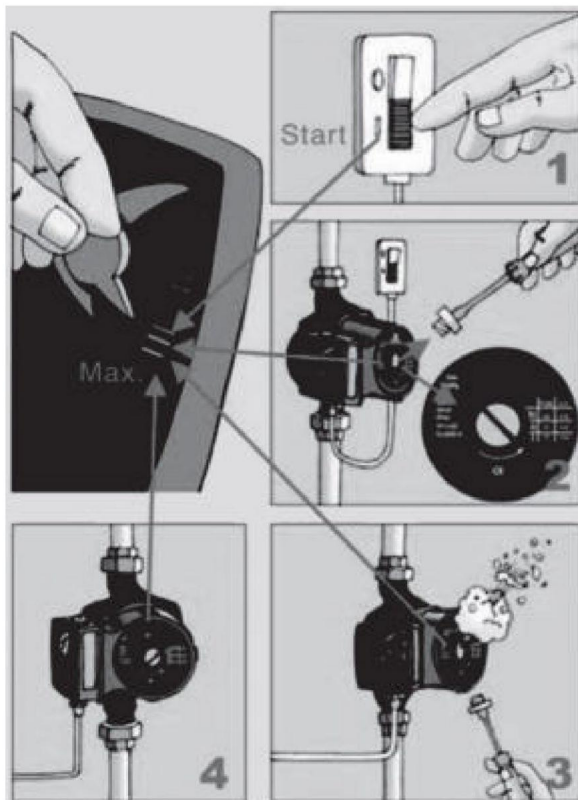
- La toma de corriente debe estar conectada a tierra. No se debe modificar el enchufe de conexión a tierra de la máquina sin autorización. (Figura 5)
- Leer atentamente las advertencias (Figura 6)



Para encender el aparato, gire el interruptor a la posición de velocidad y luego afloje el tornillo de aire para ventilar.

(Figura 7)

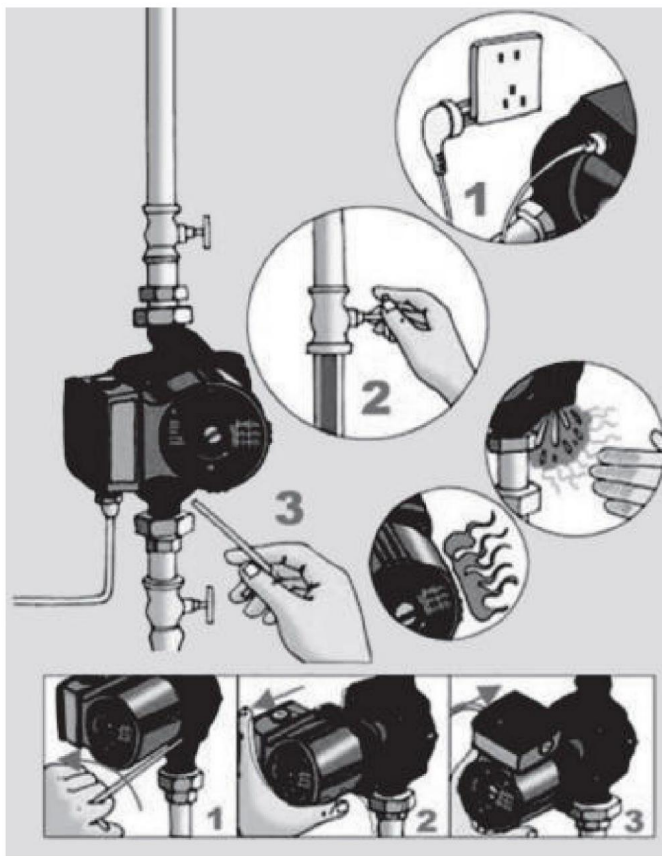
Figura 7



### 3. Desmontar y reparar

Antes de realizar cualquier reparación, primero debe desconectar el enchufe, cortar la energía y cerrar la válvula de entrada, quitar el tornillo y luego sacar las piezas dañadas. (Figura 8)

Figura 8



<b>Fault</b>	<b>Cause</b>	<b>Remedy</b>
<b>Pump fails to start</b>	<b>Supply failure.</b>	<b>Check fuses and possible loose electrical connections</b>
	<b>Capacitor is defective</b>	<b>Replace the capacitor.</b>
	<b>Pump blocked due to furred bearings.</b>	<b>Change over to maximum speed for a short period or free the rotor with a screwdriver inserted in the slot of the shaft end</b>
	<b>Impurities in the pump.</b>	<b>Dismantle and clean the pump.</b>
<b>Noise in the system</b>	<b>Pump flow setting is too high</b>	<b>Change over to a lower speed.</b>
	<b>Air in the system.</b>	<b>Vent the system.</b>
<b>Noise in the pump.</b>	<b>Air in the pump</b>	<b>Vent the pump.</b>
	<b>Inlet pressure too low</b>	<b>Increase the inlet pressure or check the air volume in the expansion tank (if installed).</b>

corazón-en Altas temperaturas del agua y presiones del sistema, cierre las válvulas de aislamiento en Ambos puertos de la bomba. Primero, deje que la bomba se enfríe.

Ruido

-Cavitación por presión de entrada insuficiente. Medidas correctivas:

-Aumentar la presión del sistema dentro de los límites permitidos.

-Verifique la configuración de velocidad; si es necesario, ajústela a una configuración de velocidad más baja.

Si no se puede localizar o corregir el fallo, póngase en contacto con su representante más cercano.

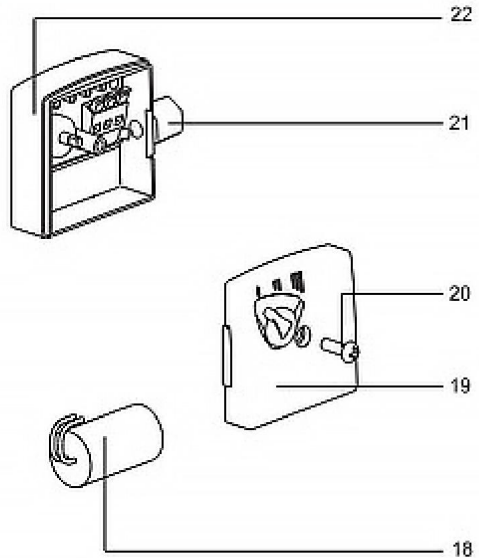
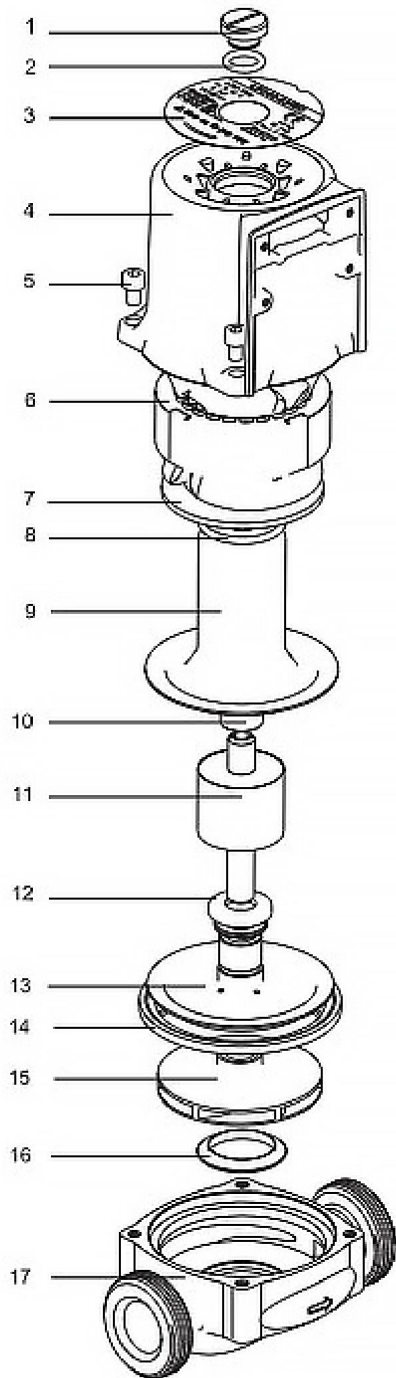
## PARÁMETROS DE ESPECIFICACIÓN

Modelo	Aporte	Flujo máximo [l/min]	Cabeza máxima [metro]	Tamaño de la salida
LPS25-4S/180	CA 220-240 V 50 Hz	50	4	1-1/2"
LPS25-6S/180	CA 220-240 V 50 Hz	60	6	1-1/2"



### Eliminación correcta

Este producto está sujeto a las disposiciones de la Directiva europea 2012/19/UE. El símbolo que muestra un contenedor de basura tachado indica que el producto requiere recogida selectiva de residuos en el Unión Europea. Esto se aplica al producto y a todos los accesorios marcados con este símbolo. Los productos marcados como tal no pueden desecharse con la basura doméstica normal, sino que deben llevarse a Punto de recogida para el reciclaje de aparatos eléctricos y electrónicos.



- 1.Screw
- 2.Oring
- 3.Name plate
- 4.Motor housing
- 5.Screw
- 6.stator and winding
- 7.Flat
- 8.Oring
- 9.Rotor can
- 10.Graphite bearing
- 11.Rotor
- 12.Rotary ring
- 13.Bearing plate
- 14.Flat gasket
- 15.Impeller
- 16.Inlet ring
- 17.Pump body
- 18.Capacitor
- 19.Box cover
- 20.Screw
- 21.Rotary switch
- 22.Terminal box



# POMPA OBIEGOWA

## INSTRUKCJE

## POMPA OBIEGOWA

Modele: LPS25-4S/180, LPS25-6S/180



(Zdjęcie ma charakter poglądowy, proszę odnosić się do rzeczywistego obiektu)



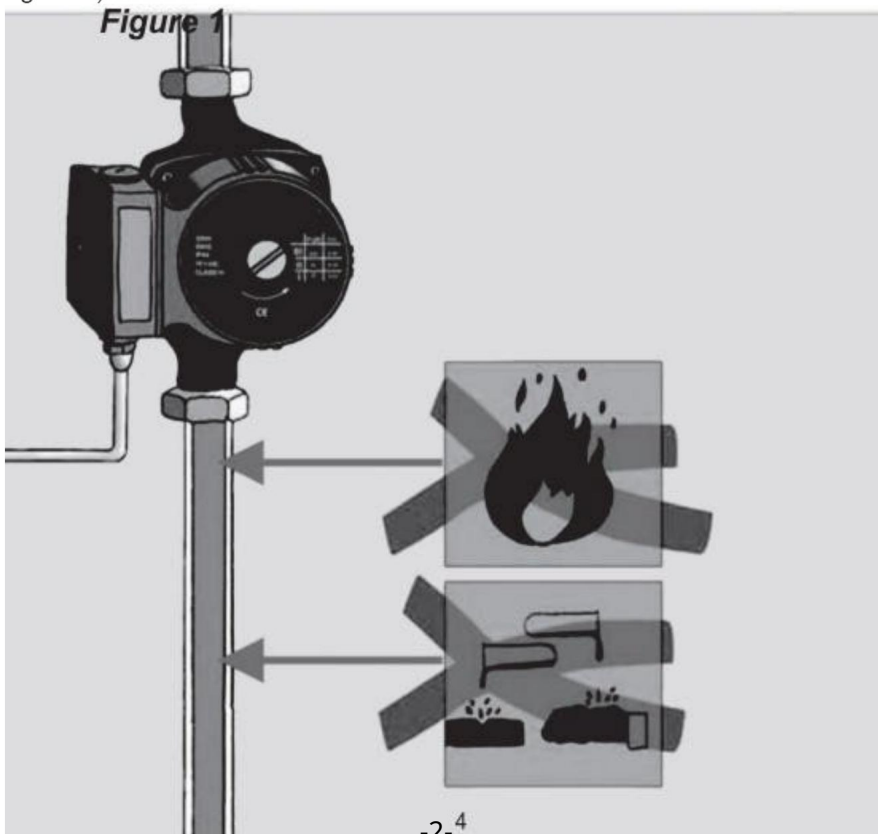
Ostrzeżenie: Aby zminimalizować ryzyko obrażeń, użytkownik powinien uważnie przeczytać instrukcję obsługi.

## UWAGA

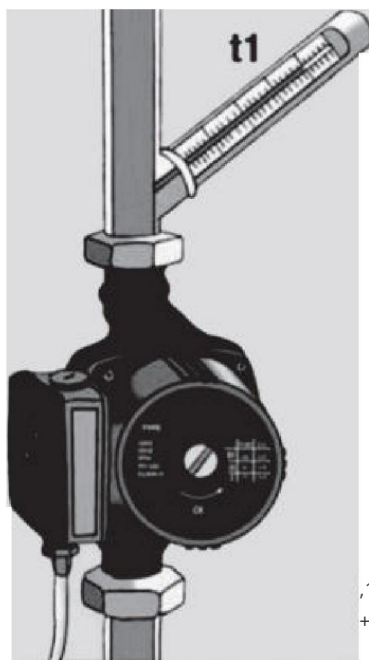
### Circulation Pump

#### 1. Using condition

- This pump uses water or liquid to lubricate. Therefore in the condition of no-water or no-liquid, operating shall not be exceed 10 seconds. (Figure 1)



t1=temperatura rury  
 t2=temperatura otoczenia  
 (Rysunek 2)



Rysunek 2



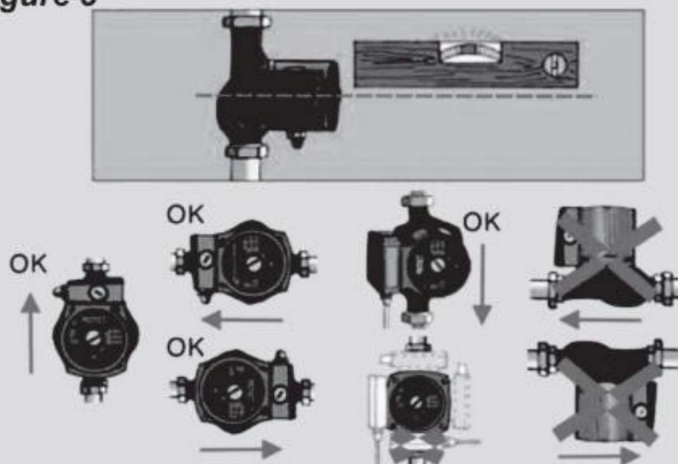
,1 maks.:  
 +110.cPamięć mfn:+2'c

t1·c	2	40	60	80 90 100-1105,DÓŁ
t2c	0	40	60	80,70,60,55,35

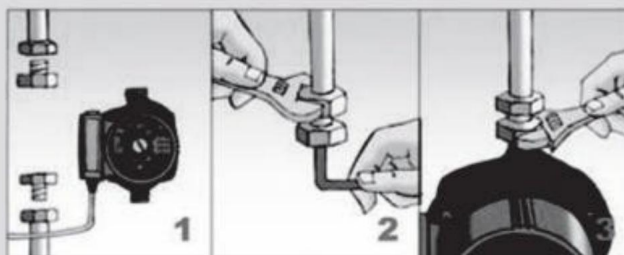
## 2. Instalacja

- Zabrania się montażu do góry nogami lub silnikiem skierowanym w dół, aby uniknąć wycieku płynu do wnętrza silnika, co może spowodować zwarcie i spalenie silnika (rysunek 3).
- Wkładanie poduszki, przykręcanie złączy rurowych, mocowanie pompy wodnej (rysunek 4)

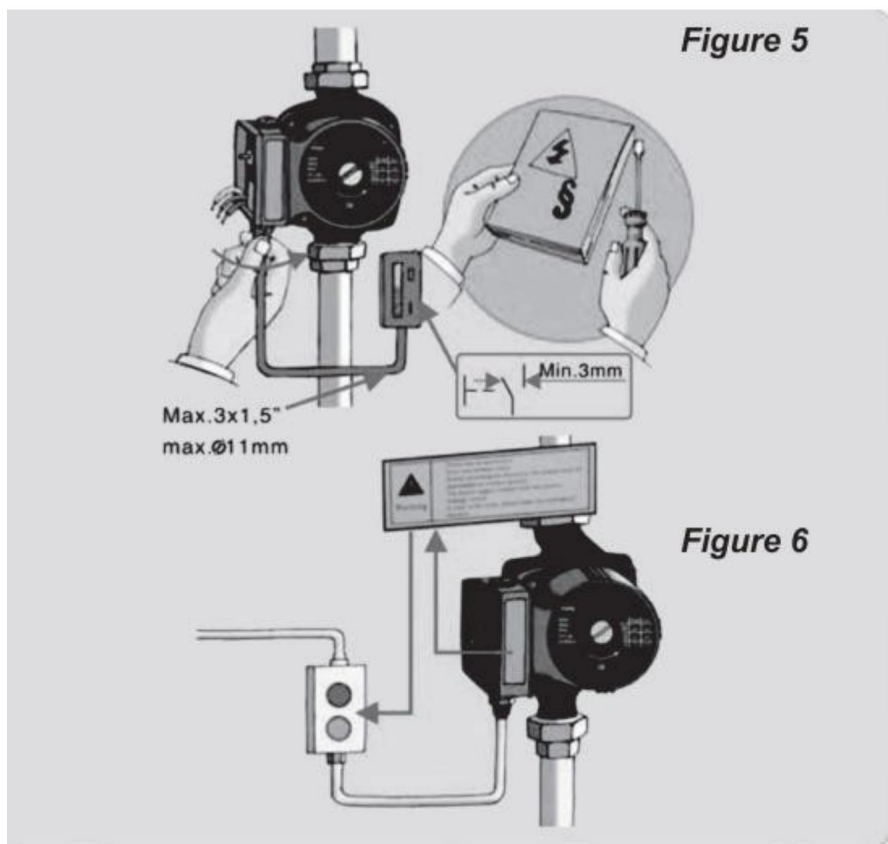
**Figure 3**



**Figure 4**

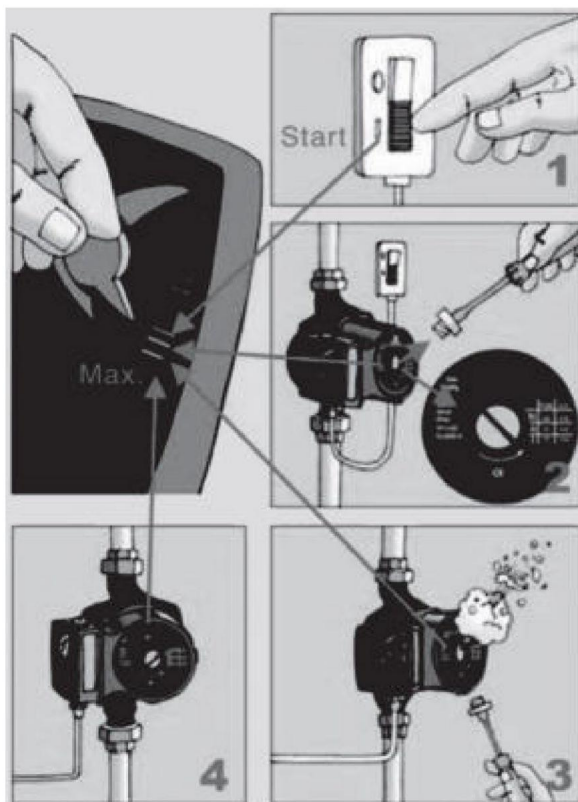


- Gniazdo zasilania musi być uziemione. Nie wolno modyfikować wtyczki uziemiającej urządzenia bez zezwolenia. (Rysunek 5)
- Uważne przeczytanie ostrzeżeń (Rysunek 6)



Po włączeniu zasilania ustaw przełącznik na pozycję „speed”, a następnie poluzuj śrubę odpowietrzającą.  
(Rysunek 7)

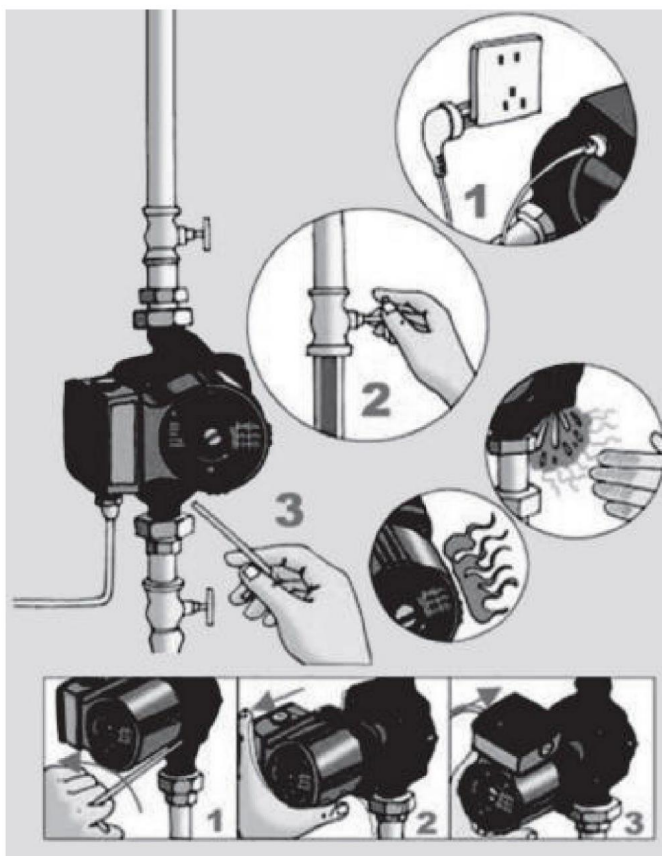
Rysunek 7



### 3. Rozebrać i naprawić

Przed przystąpieniem do naprawy należy najpierw wyciągnąć wtyczkę ,  
odciąć zasilanie, zamknąć zawór wlotowy, wykręcić śrubę i wyjąć  
uszkodzone części. (Rysunek 8)

Rysunek 8



<b>Fault</b>	<b>Cause</b>	<b>Remedy</b>
Pump fails to start	Supply failure.	Check fuses and possible loose electrical connections
	Capacitor is defective	Replace the capacitor.
	Pump blocked due to furred bearings.	Change over to maximum speed for a short period or free the rotor with a screwdriver inserted in the slot of the shaft end
	Impurities in the pump.	Dismantle and clean the pump.
Noise in the system	Pump flow setting is too high	Change over to a lower speed.
	Air in the system.	Vent the system.
Noise in the pump.	Air in the pump	Vent the pump.
	Inlet pressure too low	Increase the inlet pressure or check the air volume in the expansion tank (if installed).

Sece-w wysokie temperatury wody i ciśnienie w systemie, należy zamknąć zawory odcinające oba porty pompy. Najpierw pozwól pompie ostygnąć.

Hałas

-Kawitacja spowodowana niewystarczającym ciśnieniem wlotowym - działania naprawcze:

- Zwiększ ciśnienie w układzie w dopuszczalnych granicach.

-Sprawdź ustawienie prędkości, w razie potrzeby ustaw niższą prędkość

Jeżeli nie uda się zlokalizować usterki lub jej usunąć, prosimy o kontakt z najbliższym przedstawicielem.

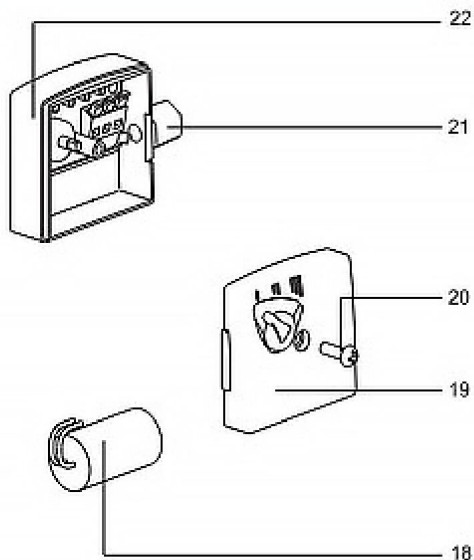
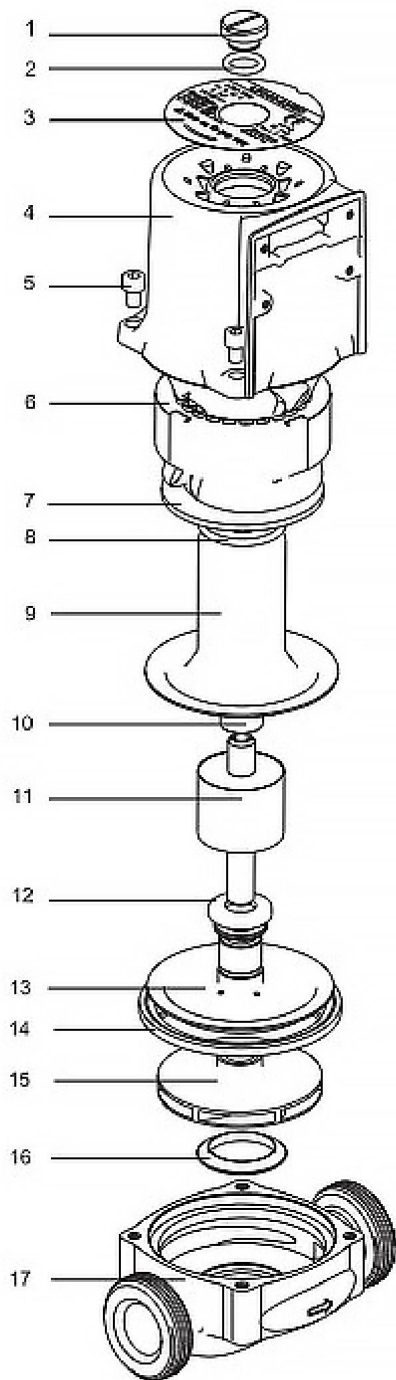
## PARAMETRY SPECYFIKACYJNE

Model	Wejście	Maksymalny przepływ [l/min]	Maksymalna głowa [M]	Rozmiar wylotu
LPS25-4S/180	Prąd zmienny 220-240 V 50 Hz	50	4	1-1/2"
LPS25-6S/180	Prąd zmienny 220-240 V 50 Hz	60	6	1-1/2"



## Prawidłowa utylizacja

Niniejszy produkt podlega postanowieniom dyrektywy europejskiej 2012/19/UE. Symbol przedstawiający przekreślony kosz na śmieci na kółkach oznacza, że produkt wymaga oddzielnej zbiórki odpadów w Unia Europejska. Dotyczy produktu i wszystkich akcesoriów oznaczone tym symbolem. Produkty oznaczone w ten sposób nie mogą być wyrzucać razem z normalnymi odpadami domowymi, ale należy je oddać do punkt zbiórki sprzę tu elektrycznego i elektronicznego przeznaczonego do recyklingu.



- 1.Screw
- 2.Oring
- 3.Name plate
- 4.Motor housing
- 5.Screw
- 6.stator and winding
- 7.Flat
- 8.Oring
- 9.Rotor can
- 10.Graphite bearing
- 11.Rotor
- 12.Rotary ring
- 13.Bearing plate
- 14.Flat gasket
- 15.Impeller
- 16.Inlet ring
- 17.Pump body
- 18.Capacitor
- 19.Box cover
- 20.Screw
- 21.Rotary switch
- 22.Terminal box



# **CIRCULATIEPOMP INSTRUCTIES**

## CIRCULATIEPOMP

Model: LPS25-4S/180, LPS25-6S/180



(De afbeelding is alleen ter referentie, kijk naar het daadwerkelijke object)



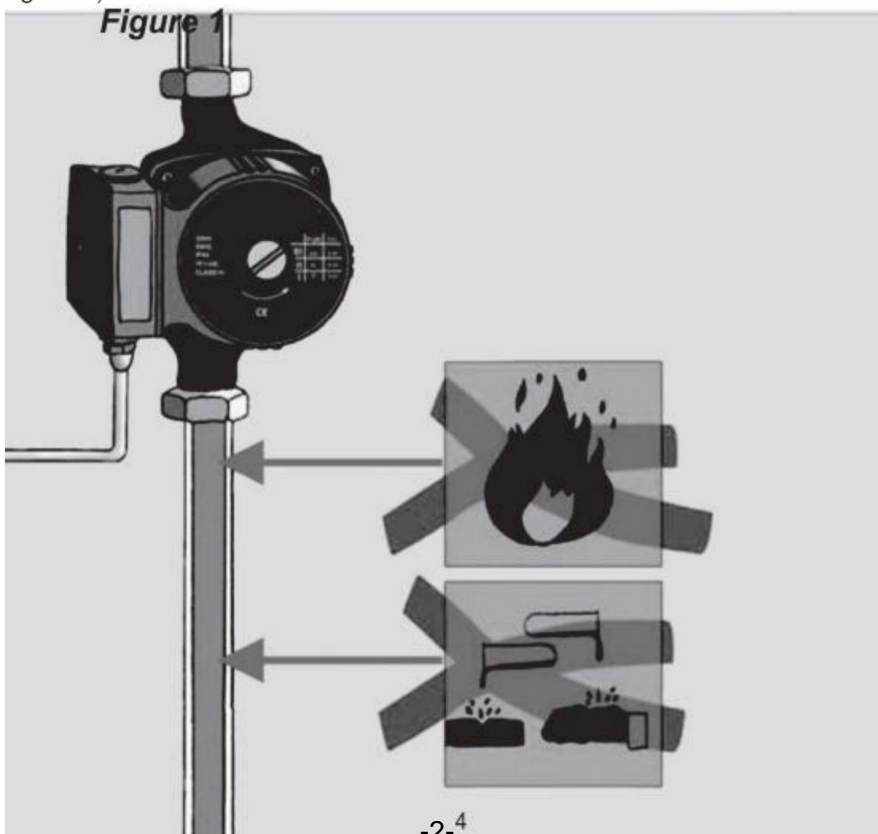
Waarschuwing: om het risico op letsel te verkleinen, moet de gebruiker de gebruiksaanwijzing zorgvuldig lezen.

## AANDACHT

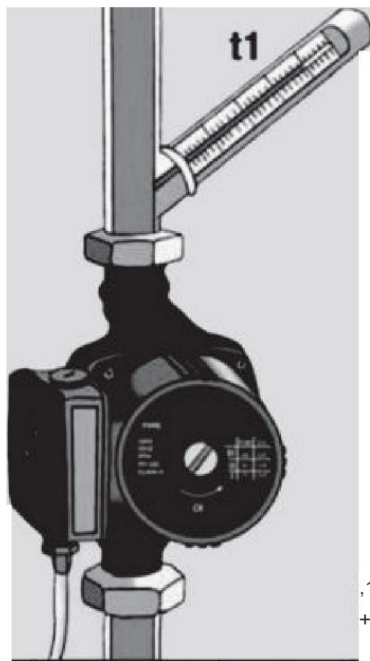
### *Circulation Pump*

#### *1. Using condition*

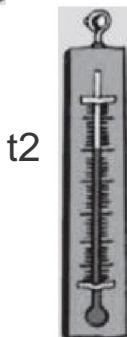
- *This pump uses water or liquid to lubricate. Therefore in the condition of no-water or no-liquid, operating shall not be exceed 10 seconds. (Figure 1)*



$t_1$  = pijptemperatuur  
 $t_2$  = omgevingstemperatuur  
 (Figuur 2)



Figuur 2



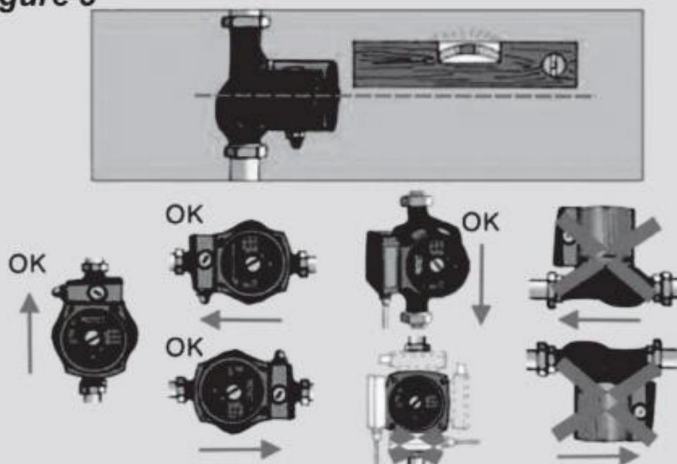
,1 max:  
+110.cGeheugen mfn:+2'c

$t_1$ -c	2	40	60	80 90 100-1105,OMLAAG
$t_2$ 'c	0	40	60	80  k 70  k 60  k 55  k 35

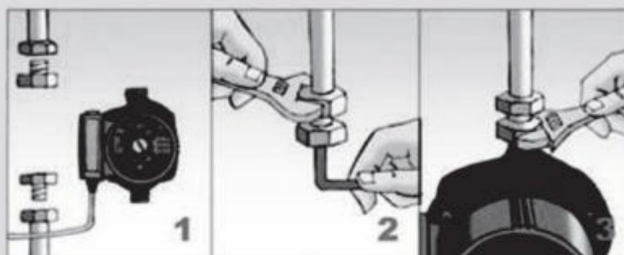
## 2. Installatie

- Het is niet toegestaan om de motor ondersteboven of met de motor naar beneden te installeren, om te voorkomen dat er vloeistof in de motor lekt, wat kortsluiting en doorbranden van de motor kan veroorzaken (Figuur 3)
- In het kussen plaatsen, de buisfittingen vastschroeven, de waterpomp bevestigen (Figuur 4)

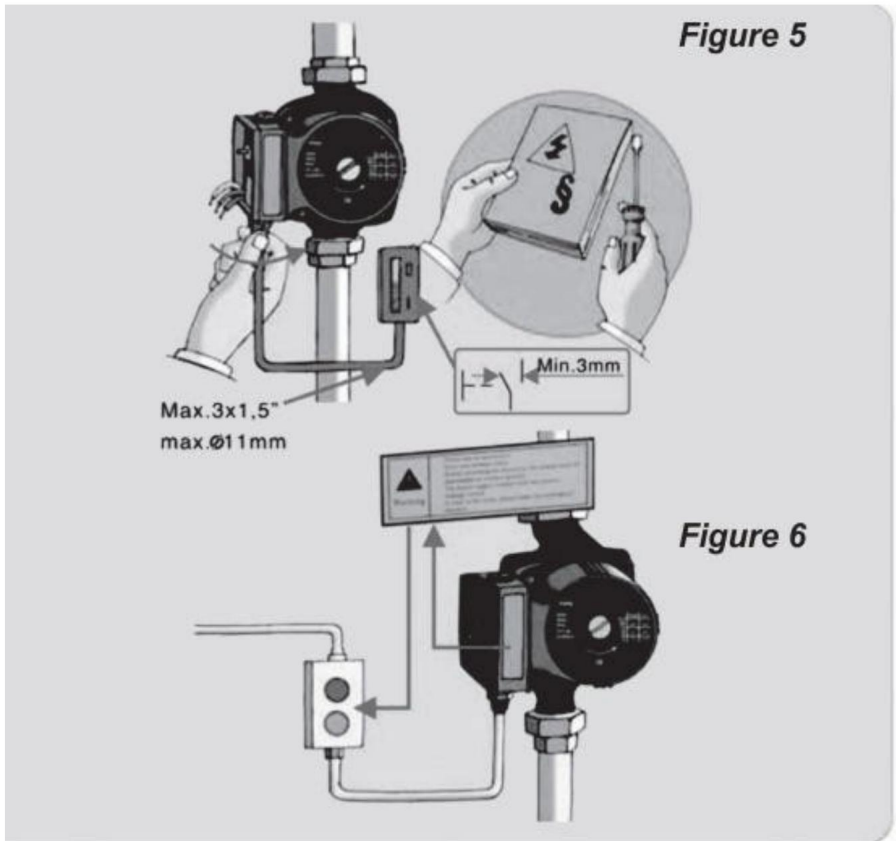
**Figure 3**



**Figure 4**



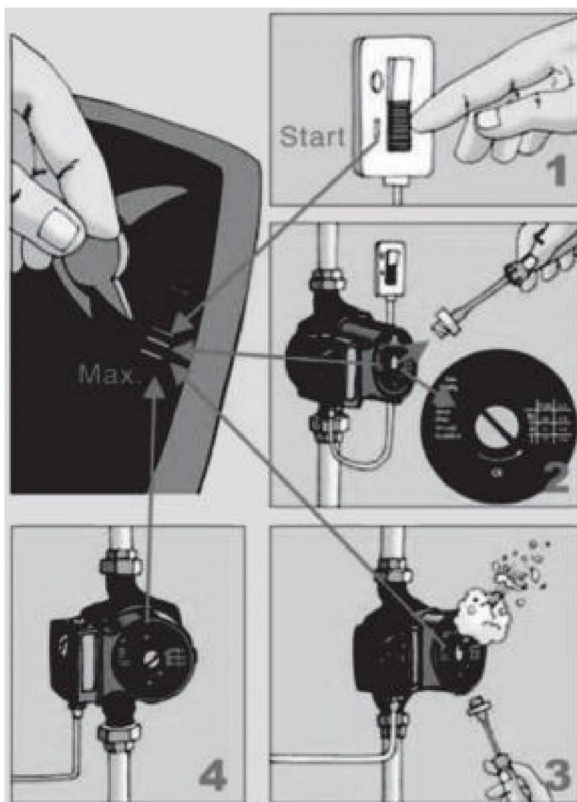
- Het stopcontact moet geaard zijn. De aardingsstekker van de machine mag niet zonder toestemming worden gewijzigd. (Figuur 5)
- Lees de waarschuwingen zorgvuldig door (Figuur 6)



Start de motor, zet de schakelaar op 'open' en draai vervolgens de luchtschroef los om te ontluften.

(Figuur 7)

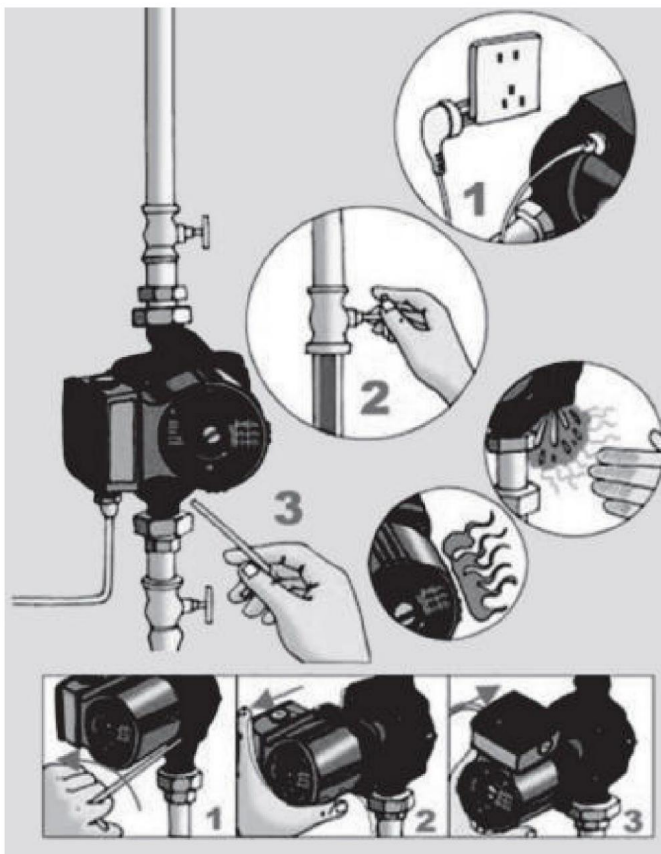
Figuur 7



### 3. Demonteren en repareren

Voordat u gaat repareren, moet u eerst de stekker eruit trekken, de stroom uitschakelen, de inlaatklep sluiten, de schroef verwijderen en vervolgens de beschadigde onderdelen verwijderen. (Figuur 8)

Figuur 8



<b>Fault</b>	<b>Cause</b>	<b>Remedy</b>
<b>Pump fails to start</b>	<b>Supply failure.</b>	<b>Check fuses and possible loose electrical connections</b>
	<b>Capacitor is defective</b>	<b>Replace the capacitor.</b>
	<b>Pump blocked due to furred bearings.</b>	<b>Change over to maximum speed for a short period or free the rotor with a screwdriver inserted in the slot of the shaft end</b>
	<b>Impurities in the pump.</b>	<b>Dismantle and clean the pump.</b>
<b>Noise in the system</b>	<b>Pump flow setting is too high</b>	<b>Change over to a lower speed.</b>
	<b>Air in the system.</b>	<b>Vent the system.</b>
<b>Noise in the pump.</b>	<b>Air in the pump</b>	<b>Vent the pump.</b>
	<b>Inlet pressure too low</b>	<b>Increase the inlet pressure or check the air volume in the expansion tank (if installed).</b>

**Hart-bij** Bij hoge watertemperaturen en systeemdrukken, sluit u de afsluitkleppen beide pomppoorten. Laat de pomp eerst afkoelen.

Lawaai

- Cavitatie door onvoldoende inlaatdruk: maatregelen ter bestrijding:
- Verhoog de systeemdruk binnen de toegestane grenzen.
- Controleer de snelheidsinstelling, indien nodig, pas deze aan naar een lagere snelheidsinstelling

Als het defect niet kan worden gevonden of verholpen, neem dan contact op met uw dichtstbijzijnde vertegenwoordiger.

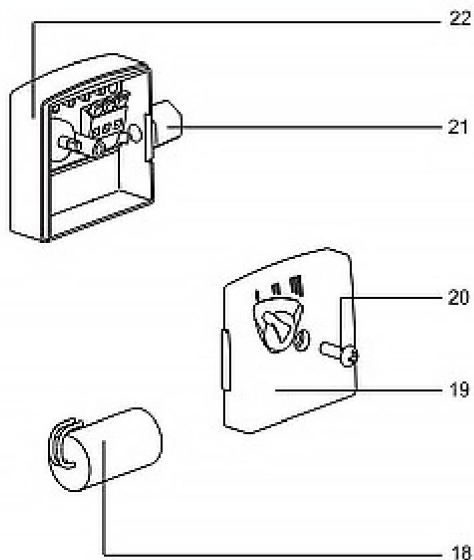
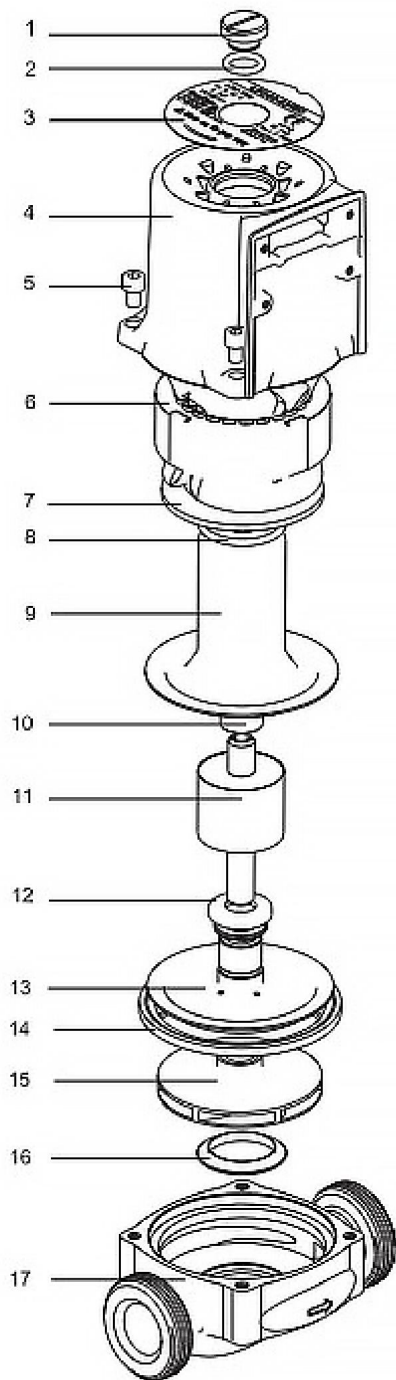
## SPECIFICATIEPARAMETERS

Model	Invoer	Maximale stroom [l/min]	Max Hoofd [M]	Uitlaatmaat
LPS25-4S/180	AC220-240V 50 Hz	50	4	1-1/2"
LPS25-6S/180	AC220-240V 50 Hz	60	6	1-1/2"



### Correcte verwijdering

Dit product is onderworpen aan de bepalingen van de Europese richtlijn 2012/19/EU. Het symbool met een klike-afvalbak doorkruist geeft aan dat het product gescheiden afvalinzameling vereist in de Europese Unie. Dit geldt voor het product en alle accessoires gemarkeerd met dit symbool. Producten die als zodanig gemarkeerd zijn, mogen niet weggegooid met het normale huisvuil, maar moet naar het huishoudelijk afval worden gebracht. een inzamelpunt voor het recycleren van elektrische en elektronische apparaten.



- 1.Screw
- 2.Oring
- 3.Name plate
- 4.Motor housing
- 5.Screw
- 6.stator and winding
- 7.Flat
- 8.Oring
- 9.Rotor can
- 10.Graphite bearing
- 11.Rotor
- 12.Rotary ring
- 13.Bearing plate
- 14.Flat gasket
- 15.Impeller
- 16.Inlet ring
- 17.Pump body
- 18.Capacitor
- 19.Box cover
- 20.Screw
- 21.Rotary switch
- 22.Terminal box



# **CIRKULATORPUMP INSTRUKTIONER**

## CIRKULATORPUMP

Modell: LPS25-4S/180, LPS25-6S/180



(Bilden är endast för referens, se det faktiska objektet)



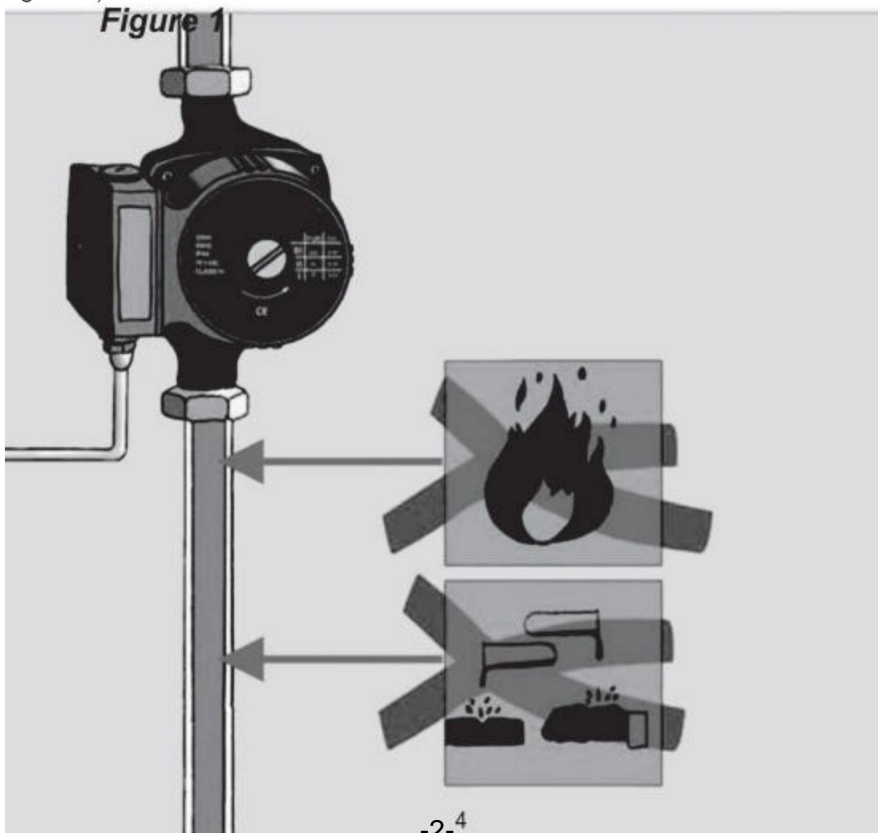
Varning - För att minska risken för skada måste användaren läsa instruktionerna noggrant.

## UPPMÄRKSAMHET

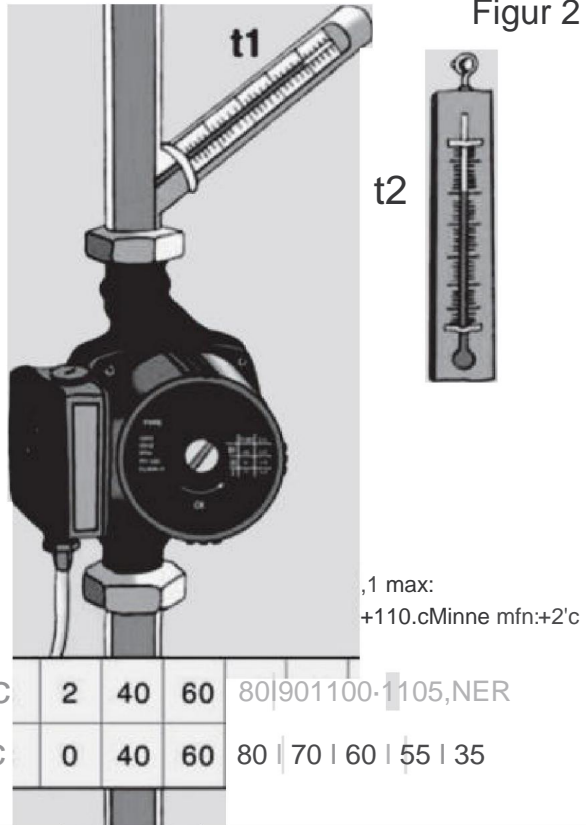
### Circulation Pump

#### 1. Using condition

- This pump uses water or liquid to lubricate. Therefore in the condition of no-water or no-liquid, operating shall not be exceed 10 seconds. (Figure 1)



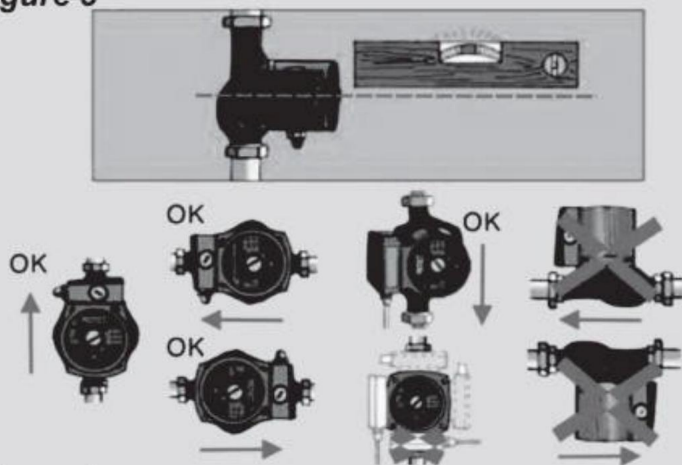
yt1=rörtemperatur  
 t2=omgivningstemperatur  
 (Figur 2)



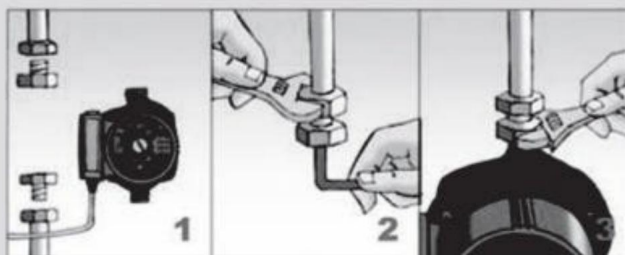
## 2. Installation

- Förbjud att installera upp och ner eller motor nedåt, för att undvika att vätskeläckage kommer in i motorns inre, vilket orsakar kortslutning och motorbränning (Figur 3)
- Sätta i dynan, skruva på rörkopplingarna, fixa vattenpumpen (Figur 4)

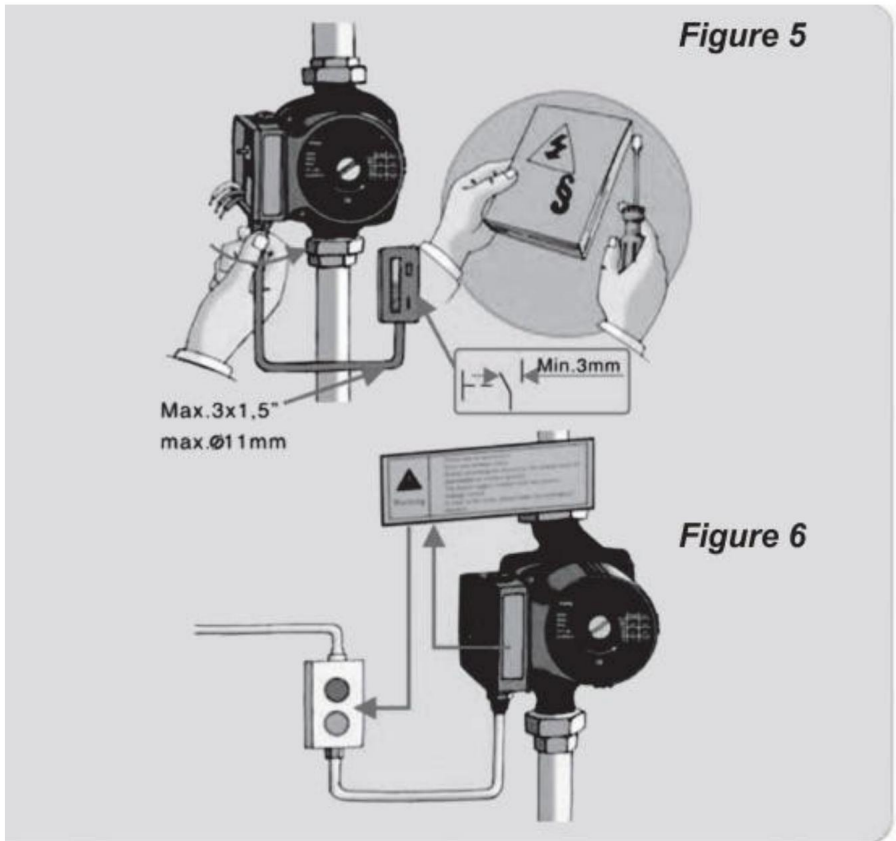
**Figure 3**



**Figure 4**

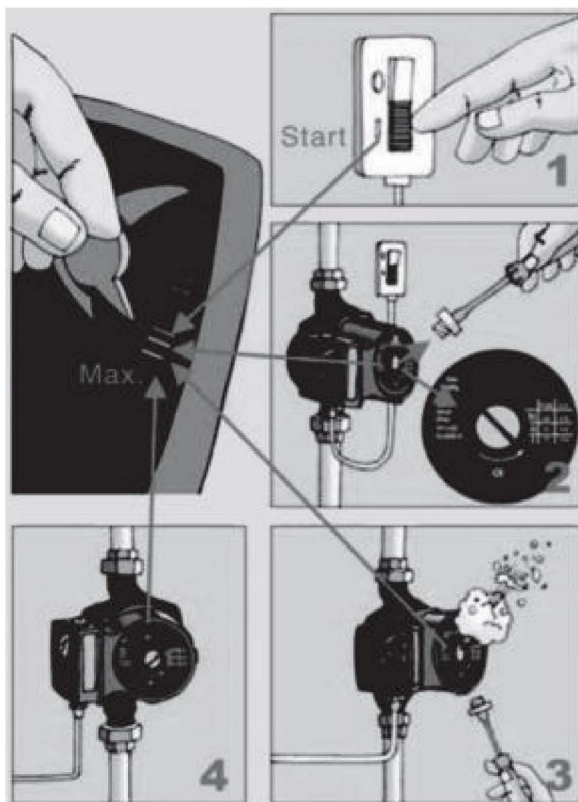


- Strömuttaget måste vara jordat. Får inte modifieras på maskinens jordkontakt utan tillstånd.(Figur 5)
- Läs varningarna noggrant (Figur 6)



Starta strömmen, vrid strömbrytaren till yrhastighet och lossa sedan luftskruven för avluftning.  
(Figur 7)

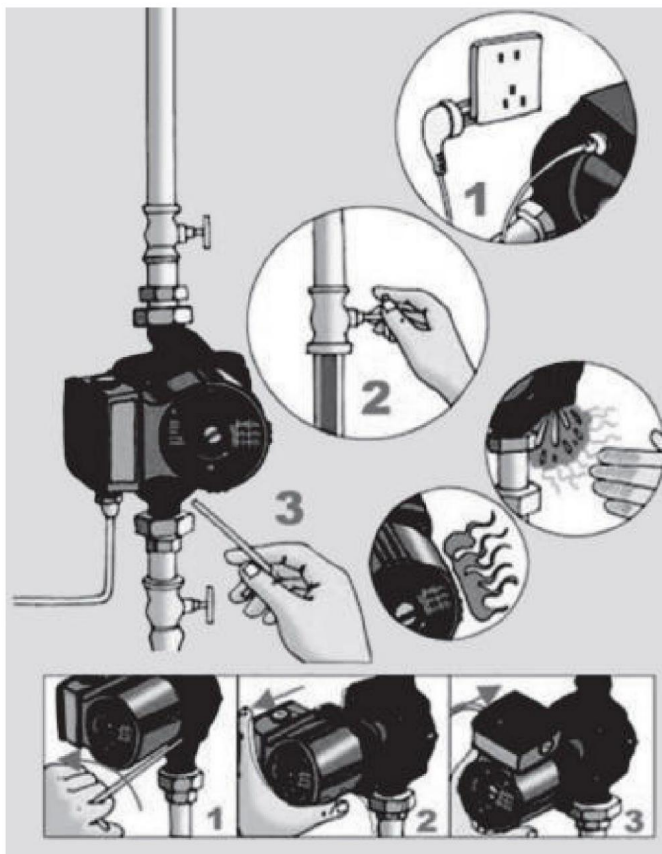
Bild 7



### 3. Ta isär och reparera

ÿ Innan du reparerar måste du först dra ut kontakten, stänga av strömmen och stänga inloppsventilen, ta bort skruven och ta sedan ut de skadade delarna.(Figur 8)

Bild 8



<b>Fault</b>	<b>Cause</b>	<b>Remedy</b>
Pump fails to start	Supply failure.	Check fuses and possible loose electrical connections
	Capacitor is defective	Replace the capacitor.
	Pump blocked due to furred bearings.	Change over to maximum speed for a short period or free the rotor with a screwdriver inserted in the slot of the shaft end
	Impurities in the pump.	Dismantle and clean the pump.
Noise in the system	Pump flow setting is too high	Change over to a lower speed.
	Air in the system.	Vent the system.
Noise in the pump.	Air in the pump	Vent the pump.
	Inlet pressure too low	Increase the inlet pressure or check the air volume in the expansion tank (if installed).

**Heart-At** höga vattentemperaturer och systemtryck, stäng avstängningsventiler på båda pumportarna. Låt först pumpen svalna.

Buller

- Kavitation på grund av otillräckligt inloppstryck korrigerande åtgärder:
  - Öka systemtrycket inom tillåtna gränser.
  - Kontrollera hastighetsinställningen, justera vid behov till en lägre hastighetsinställning
- Om felet inte kan lokaliseras eller åtgärdas, kontakta din närmaste representant.

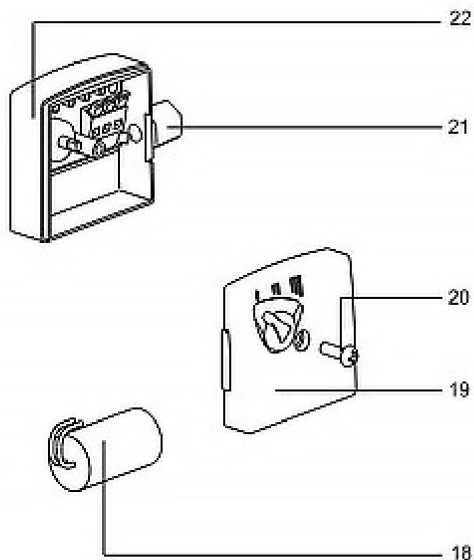
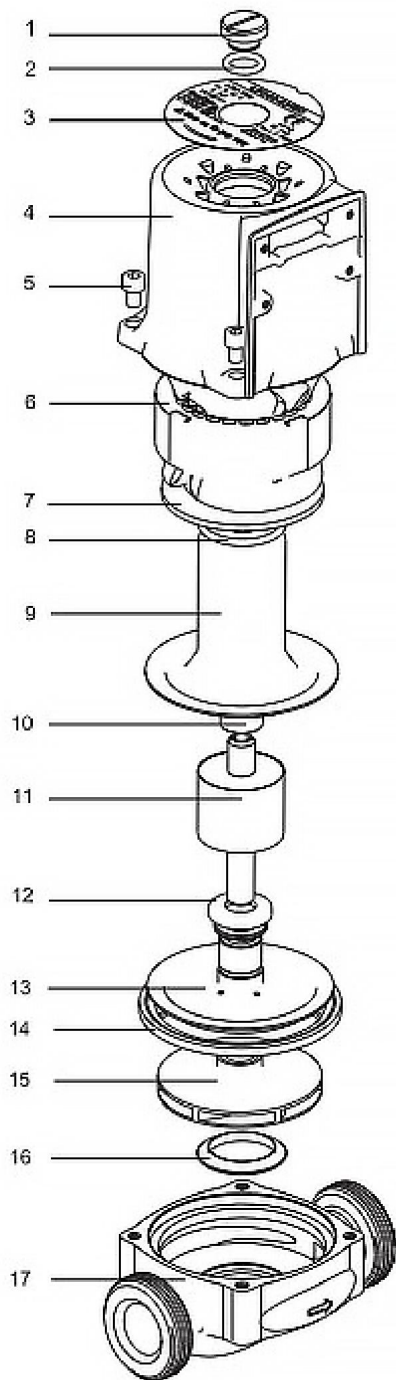
## SPECIFIKATIONSPARAMETRAR

Modell	Input	Max flöde [l/min]	Max Head [m]	Uttagsstorlek
LPS25-4S/180	AC220-240V 50HZ	50	4	1-1/2"
LPS25-6S/180	AC220-240V 50HZ	60	6	1-1/2"



### Korrekt avfallshantering

Denna produkt omfattas av bestämmelserna i det europeiska direktivet 2012/19/EU. Symbolen som visar en soptunna på hjul korsad indikerar att produkten kräver separat sophämtning i Europeiska unionen. Detta gäller produkten och alla tillbehör märkt med denna symbol. Produkter märkta som sådana kanske inte är det kasseras med vanligt hushållsavfall, men måste tas till en samlingsplats för återvinning av elektriska och elektroniska apparater.



- 1.Screw
- 2.Oring
- 3.Name plate
- 4.Motor housing
- 5.Screw
- 6.stator and winding
- 7.Flat
- 8.Oring
- 9.Rotor can
- 10.Graphite bearing
- 11.Rotor
- 12.Rotary ring
- 13.Bearing plate
- 14.Flat gasket
- 15.Impeller
- 16.Inlet ring
- 17.Pump body
- 18.Capacitor
- 19.Box cover
- 20.Screw
- 21.Rotary switch
- 22.Terminal box

