

## Rechargeable DEF / Adblue Pump

**BOP-60**

Rechargeable Battery Operated Pump for quick and convenient transfer of wide variety of fluids

Lightweight yet sturdy pump with convenient to operate large ON/OFF switch

### Pump complete with

- Control Nozzle** with lever for:
  - Full control on fluid outflow
  - No spillage even when the electric switch is ON
- Telescopic Suction Tube** adjustable 15"-20-1/2" (380- 520 mm) suitable for use on 20 to 50 litre (5 to 15 gallon) drums
- 1.5m (4.9 ft) Flexible Hose** with swivel at end to prevent kinking of hose

**Convenient & Safe Storage** Hang pump onto the supply tank via the U-shaped hook after use

### Power Source

2900mAh Rechargeable Lithium-ion battery. Rechargeable via USB 2.0 type B connector

### Battery Capacity

Fully charged battery can discharge upto 300 litres (79 gallons)\*

\*tested using water



Storage via U-shaped hook



Nozzle Holder



FLOW RATE	CHARGE TIME	USB CHARGED	BATTERY
<b>UPTO 11.5 LPM (3.04 GPM)</b>	<b>3 HOURS</b>		 LITHIUM-ION RECHARGEABLE



### SPECIFICATIONS

HANDLE STYLE	Trigger
OPERATING TEMPERATURE	+5°C to 40°C (41°F to 104°F)
DUTY CYCLE	Maximum 15 minutes run & 30 minutes off
WETTED COMPONENTS	Polypropylene, Polyethylene, PVC & Acetal
RECOMMENDED USE	Diesel, Kerosene, Light oils, Adblue, DEF, Water, Antifreeze, Windshield fluid, Mild detergents & Agricultural chemicals.
DO NOT USE WITH	Acids, Acetone, Benzene, Cresol, Ethyl, Phenol, Methyl ethyl, Concentrated caustic soda liquid, thinner, solvents etc.

CAT NR.	SUCTION TUBE LENGTH		DESCRIPTION
	(INCH)	(MM)	
BOP/60	15-20-1/2	380-520	Rechargeable DEF / Adblue Pump

**SAFETY INFORMATION**

- Keep the work area clean and dry. Damp or wet work areas can result in injury.
- Store idle product. When not in use, product should be stored in a dry location to inhibit rust.
- Use the right tool for the job. Do not attempt to force small product to do the work of larger industrial equipment.
- Do not modify this product and do not use this product for a purpose for which it was not intended.
- Check for damaged parts. Before using this product, carefully check that it will operate properly and perform its intended function. Replace damaged or worn parts immediately.

**WARNING!**

- Read and understand all instructions. Failure to follow all instructions listed above may result in electric shock, fire and/or serious injury.

**PACKAGE CONTENT**

DESCRIPTION	QUANTITY
Rechargeable DEF / Adblue Pump	1
O.I.P.M.	1

**BEFORE INSTALLATION**

- **Eyes protection:** Wear a protective mask or protective eyewear.
- **Skin protection:** Avoid repeated and prolonged contact of fluids with the skin by wearing impermeable protective gloves.
- Check that the product has not suffered any damage during transport or storage. Clean the inlet and outlet openings, removing any dust or residual packing material.
- Keep the pump away from heat and sharp edges. Check the pump for wear and make certain that all connections are secure.
- Always charge the battery completely before use. Fully charged battery can pump upto 300 litres (79 gallons).

**INSTALLATION**

**(Refer “EXPLODED VIEW”)**

1. Adjust the length of the suction tube according to the size of the container and install the pump into the container
2. Place the spout (54) into the receiving container to transfer the fluid.
3. The pump is now ready for use.

**OPERATING INSTRUCTIONS**

**(Refer “EXPLODED VIEW”)**

1. Slide the switch (1) to ON position to start the motor (35).
2. Pull the nozzle trigger (51) to start dispensing. Release the nozzle trigger (51) before overflow and slide the switch (1) to OFF position.

3. Buzzer sound during operation shows that the battery is low. To recharge the battery connect the USB Connector (8) to the power source via Micro USB type B charger.
4. While charging, the green LED light will blink continuously. It will take around 3 hours to completely charge the pump.

**WARNING!**

- Do not dry run the pump.
- Do not use with thinner or other solvents.
- Do not use deteriorated or contaminated liquids and fuels
- Do not use this pump for hot liquids above 40°C (104°F )
- Do not run the pump for longer than 15 minutes
- Do not turn the pump upside down after use.

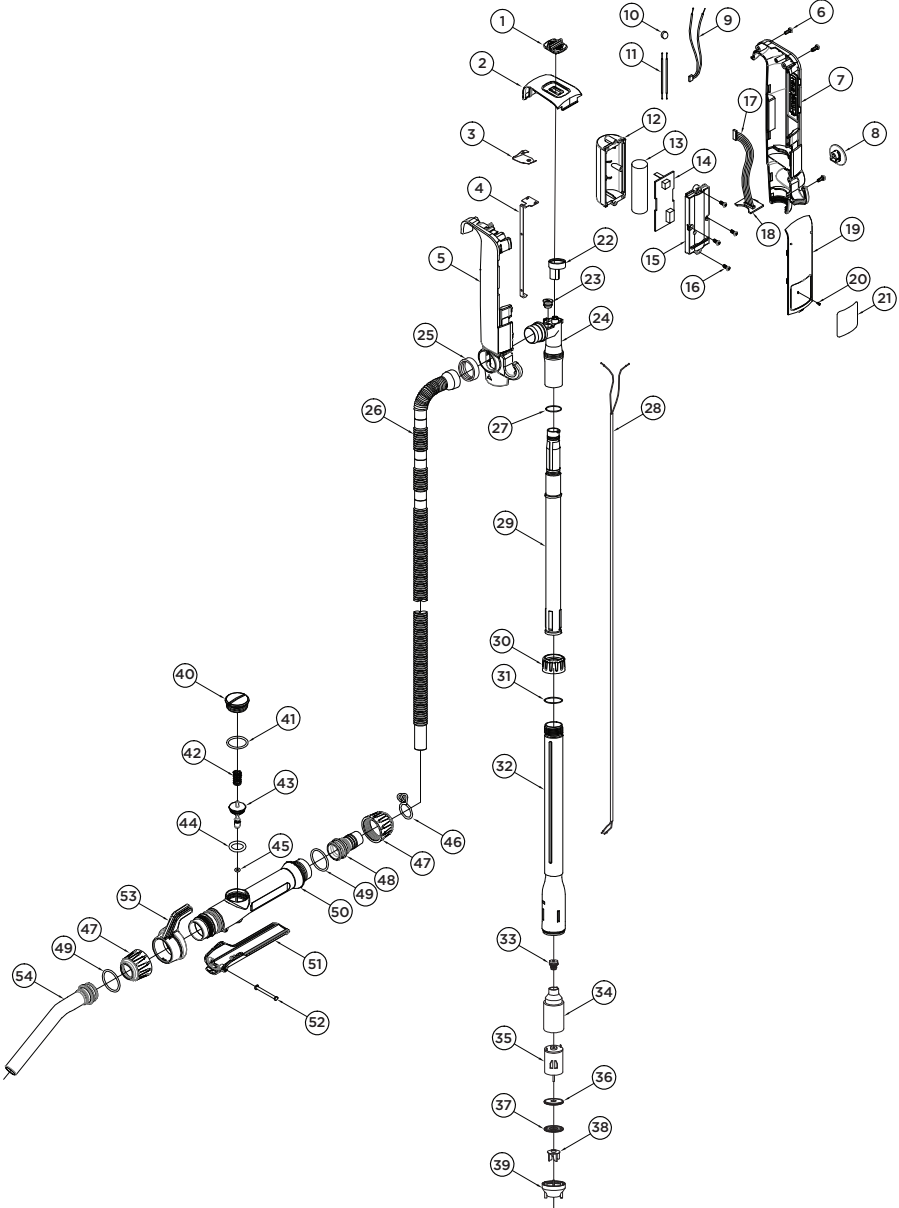
**MAINTENANCE**

The pump has been designed to require a minimum amount of maintenance. The only maintenance job required is cleaning the suction tube & spout and charging the battery completely before each use.

**WARNING!**

- Always make sure the pump is switched ‘OFF’ and liquid has been drained from the pump before cleaning.
- Do not use thinner, benzene, organic solvent or glass cleaner for cleaning the pump.

**EXPLODED VIEW**



## PARTS LIST

REF NO.	PARTS DESCRIPTION	QUANTITY
1	Switch	1
2	Top cover	1
3	Switch spring	1
4	Electrode plate	1
5	Lower cover	1
6	Screw (M3x8)	3
7	Upper cover	1
8	USB Connector	1
9	Connector wire	1
10	Buzzer	1
11	Buzzer wire	2
12	Battery case (Bottom)	1
13	Battery	1
14	PCB (Main)	1
15	Battery case (Top)	1
16	Screw	4
17	Wire	1
18	PCB (LED)	1
19	Front cover	1
20	Screw	1
21	Sticker	1
22	Check valve case	1
23	Body packing	1
24	Body	1
25	Body ring	1
26	Discharge hose	1
27	O-Ring (Inner pipe)	1

REF NO.	PARTS DESCRIPTION	QUANTITY
28	Motor wire	1
29	Pipe (Inner)	1
30	Pipe joint nut	1
31	O-Ring (Out pipe)	1
32	Pipe (Out)	1
33	Wire packing	1
34	Motor case	1
35	Motor	1
36	Motor packing	1
37	Motor case cover	1
38	Impeller (Vane)	1
39	Housing	1
40	Nozzle cap	1
41	O-Ring (Nozzle cap)	1
42	Nozzle spring	1
43	Nozzle piston	1
44	O-Ring (Piston-L)	1
45	O-Ring (Piston-S)	1
46	Hose clamp	1
47	Nozzle Joint nut	2
48	Hose adapter	1
49	O-Ring (Hose adapter & spout)	2
50	Handle	1
51	Nozzle trigger	1
52	Rivet	1
53	Nozzle hook	1
54	Spout	1

## TROUBLESHOOTING

PROBLEM	POSSIBLE CAUSE	CORRECTIVE ACTION
The pump dispenses fluid at a low rate	Low battery	Recharge the battery
	Fluid level in supply container is low	Refill the supply container
If the pump still doesn't operate		Contact nearest authorized service dealer

## DISPOSAL

The components or the used product must be given to companies that specialize in the disposal and recycling of industrial waste.









---

## **GROZ WARRANTY POLICY**

Groz makes all efforts to ensure that its products meet the highest standards of quality and durability and warrants to the original purchaser its range of products for a period of 12 months from Groz Invoice date, against defects in materials and workmanship. If the Groz product is part of a set, only the portion that is defective is subject to this warranty.

This warranty does not apply to damage due directly or indirectly, to misuse, abuse, wear and tear, negligence or accident, repairs or alterations outside Groz plants, or to lack of maintenance. Groz shall in no event be liable for death, injuries to persons or property or for incidental, contingent, special or consequential damages arising from the use of its products. It is upto the user to determine suitability and safety of the product for their intended use, and the user assumes all risks and liability herewith.

In no event, shall Groz's liability exceed the invoiced cost of the product. In case of identification of defect covered under this warranty, the same must be notified in writing to Groz /Groz designated authorized service location. Proof of purchase date must accompany the complaint. Groz reserves the right to call back the faulty unit, all charges including transportation prepaid. On verification of the defect, the unit will be repaired or replaced with a new or reconditioned product or part of equal utility or a full refund given at Groz's discretion. The repaired /replaced units will be returned to the user freight prepaid, using most economical freight carrier. However if determined that the defect resulted from causes not within the scope of the warranty, then the cost of returning the product would be to buyer's account.

---

## **Groz Engineering Tools (P) Ltd. Groz Net Industries**

Village Kherki Daula, National Highway-8,  
Gurugram-122001, Haryana, INDIA

**Tel** +91.124.282.7734/40, 2827777

**Fax** +91.124.2827980, 2827986

**E-Mail** [info@groz-tools.com](mailto:info@groz-tools.com)

**Url** [www.groz-tools.com](http://www.groz-tools.com)

The GROZ name, GROZ logo and the  mark are trademarks of GROZ Engineering Tools (P) Ltd., India