

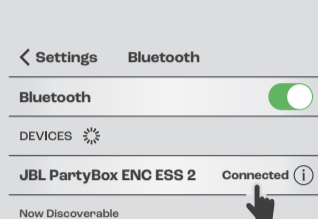
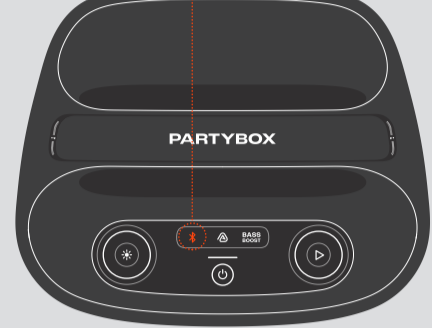


WHAT'S IN THE BOX

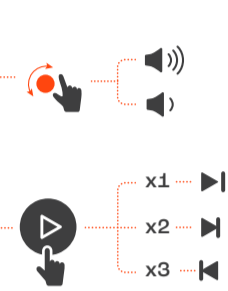


*Power cord quantity and plug type vary by regions.

BLUETOOTH PAIRING



PLAY

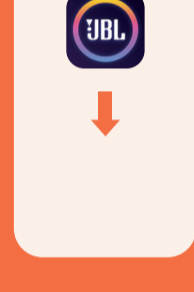


LIGHTSHOW

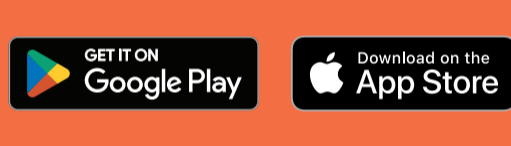


Apply lightshow presets and more with the JBL PARTYBOX app.

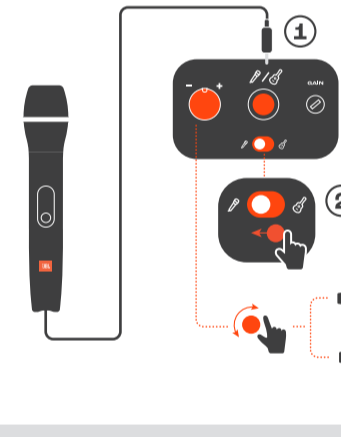
APP



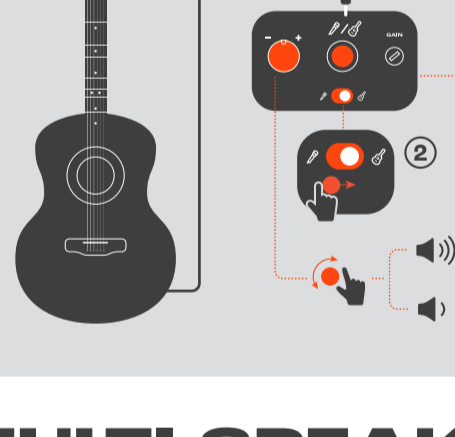
Download and install the JBL PARTYBOX app to get more from the product.



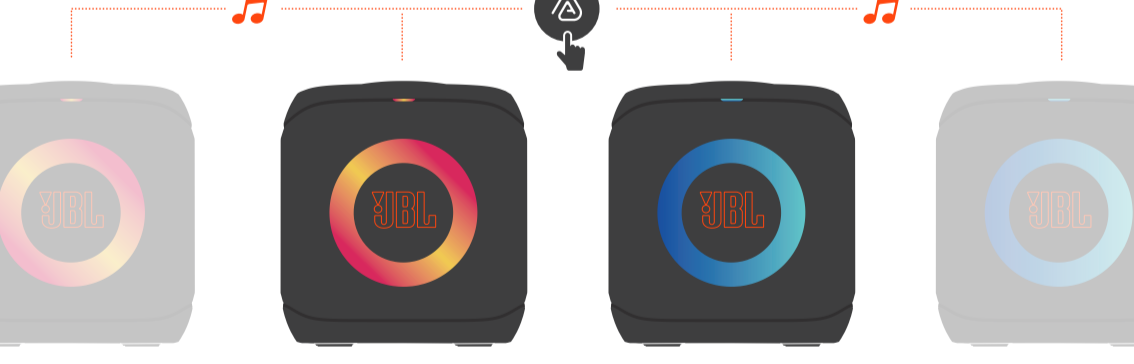
MICROPHONE



GUITAR



MULTI-SPEAKER CONNECTION

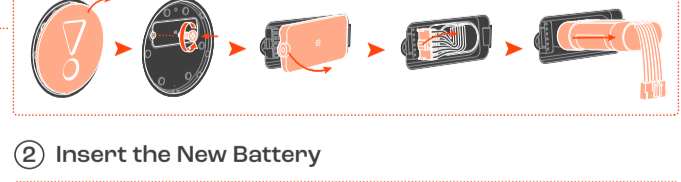


CHARGING

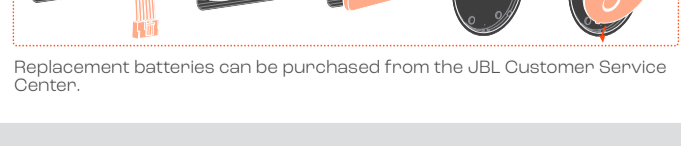


BATTERY REPLACEMENT

1 Remove the Old Battery



2 Insert the New Battery



Replacement batteries can be purchased from the JBL Customer Service Center.

SPLASH PROOF IPX4



Do not change your speaker until it is completely dry and clean.

