

C-PLUSZ

CHARAKTERYSTYKA PRODUKTU

PRODUCT PROFILE / ARTIKELPASS



Kod produktu / Article Number / Artikelnummer:

Szerokość / Width / Breite: 142 cm (+/- 2 cm)

Waga / Weight / Gewicht: 355 g/m (+/- 5%)

Kompozycja / Composition / Material: 100% PES

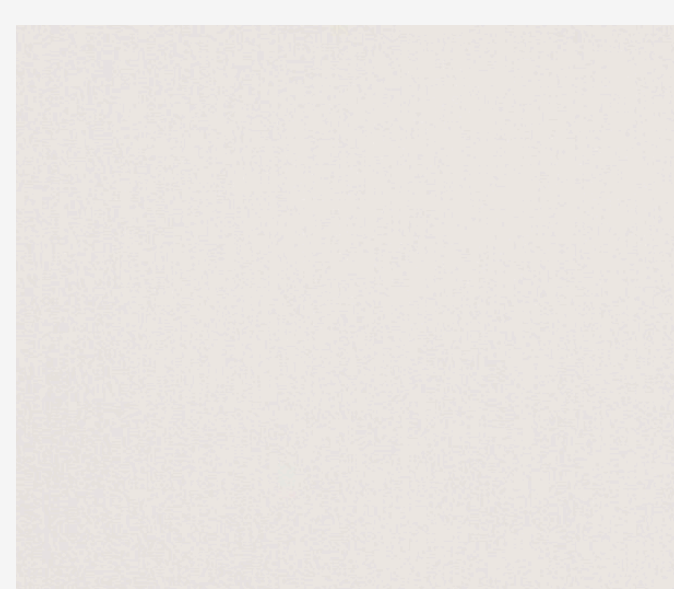
SPOSÓB PIELĘGNACJI

CARE METHOD / PFLEGEMETHODE

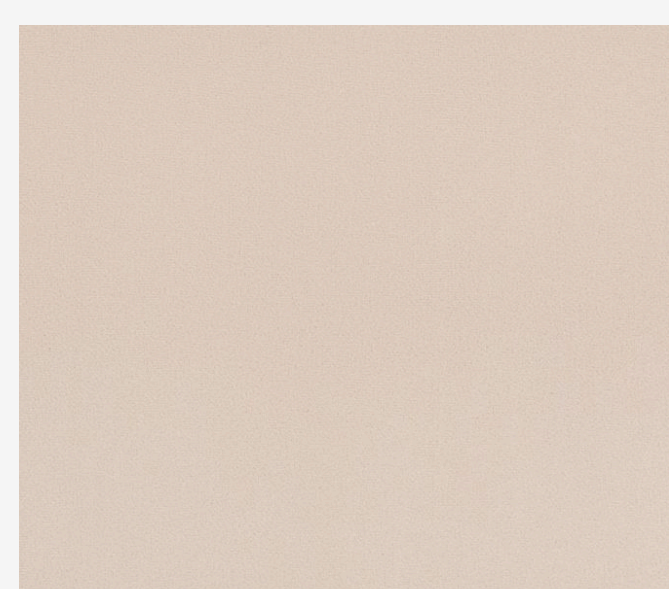


KOLORY

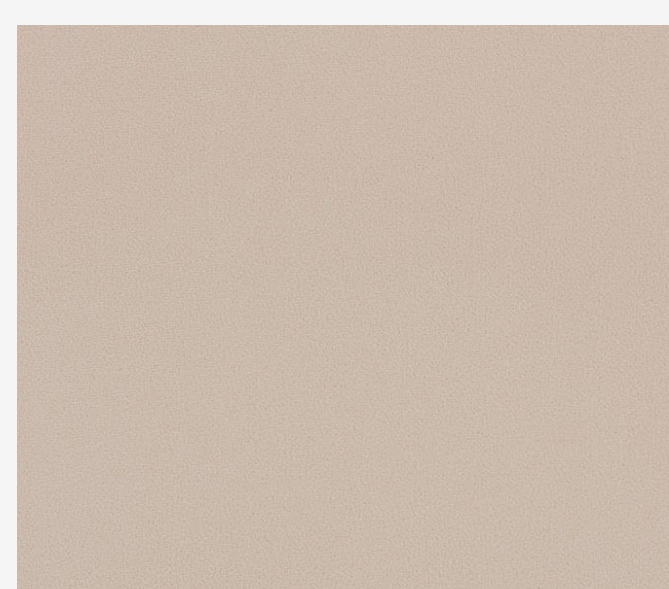
COLORS / FARBEN



C1



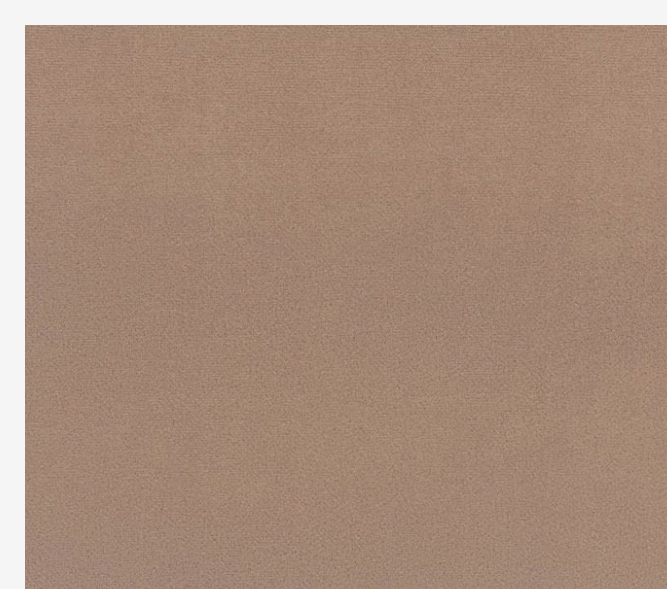
C2



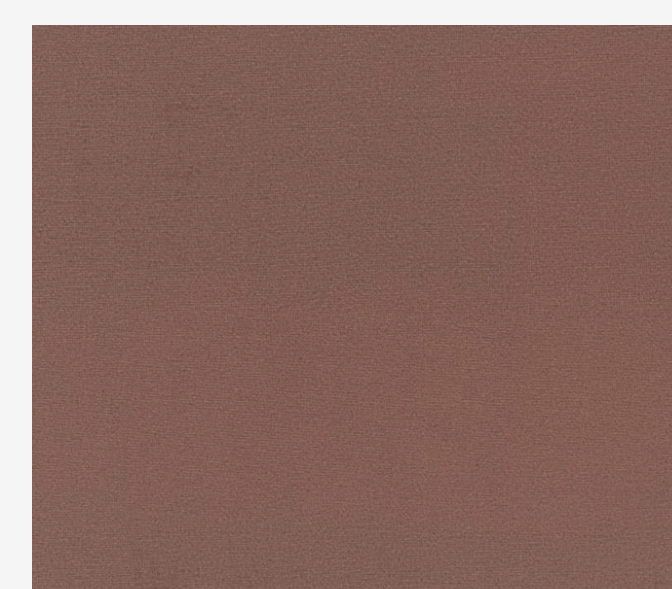
C3



C4



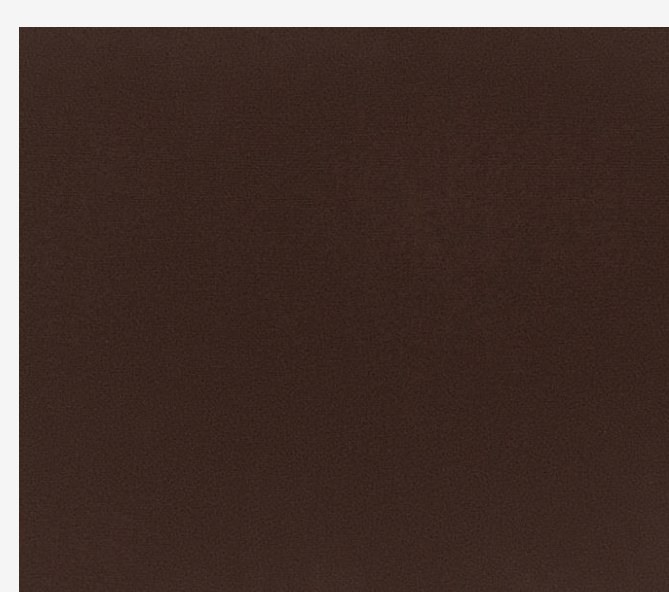
C5



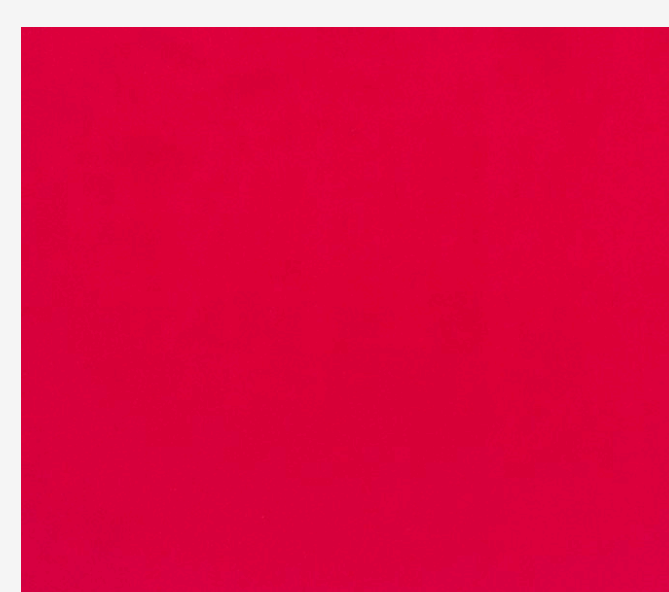
C6



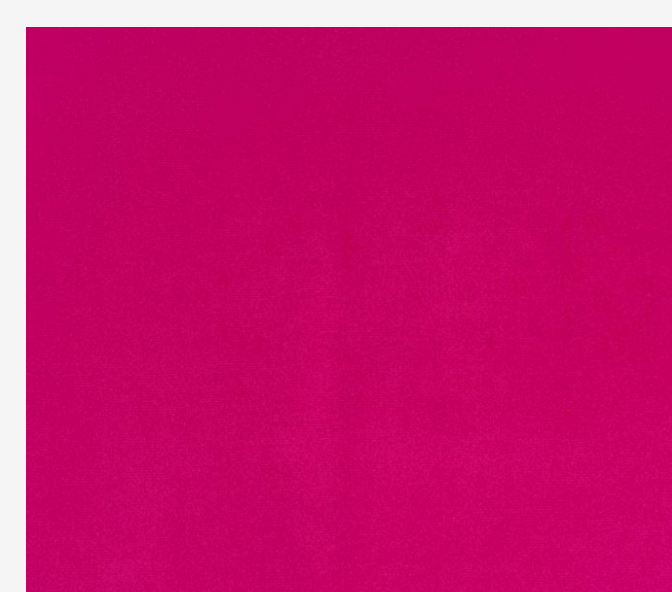
C7



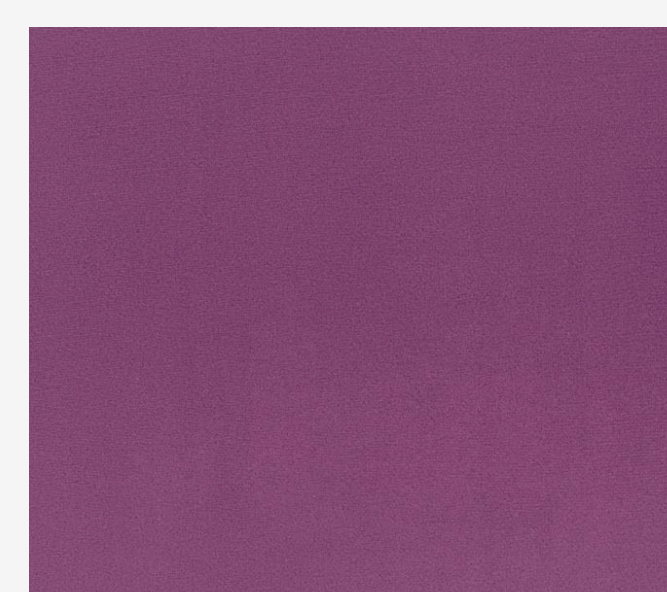
C8



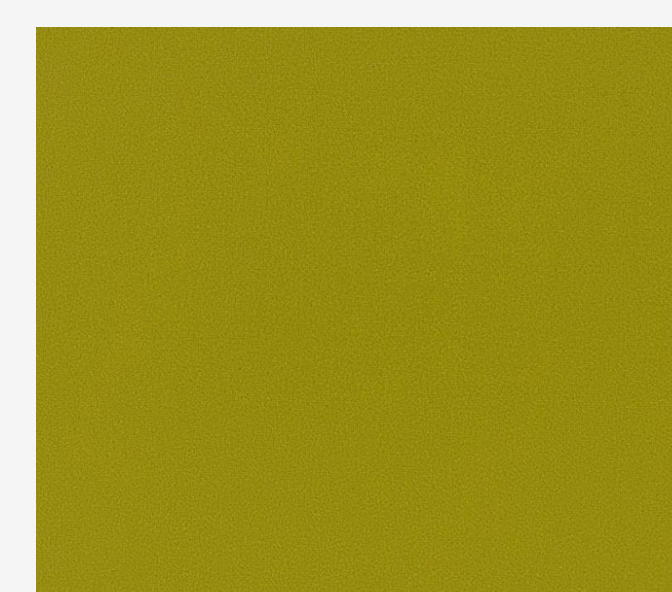
C9



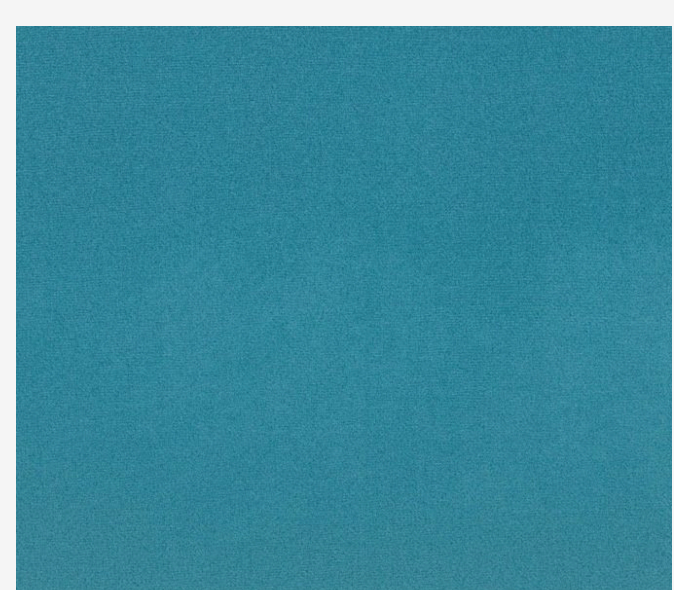
C10



C11



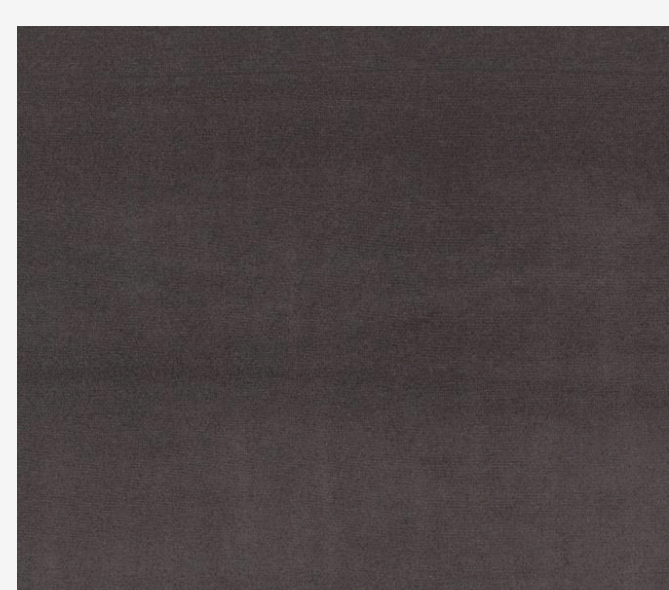
C12



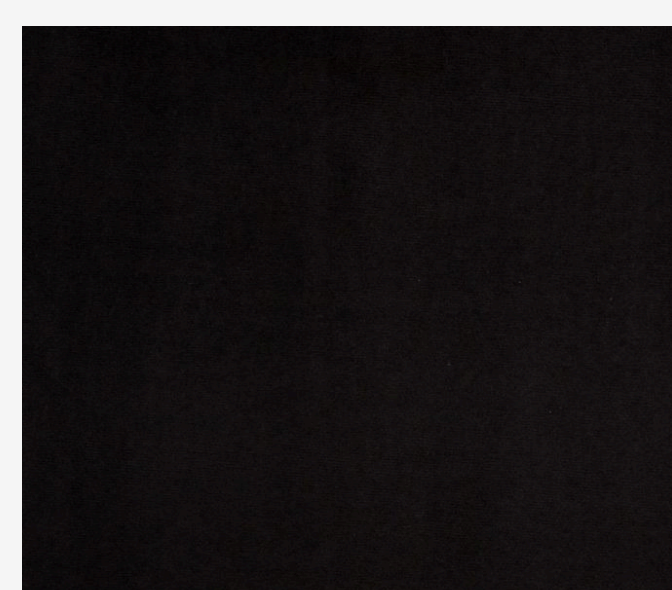
C13



C14

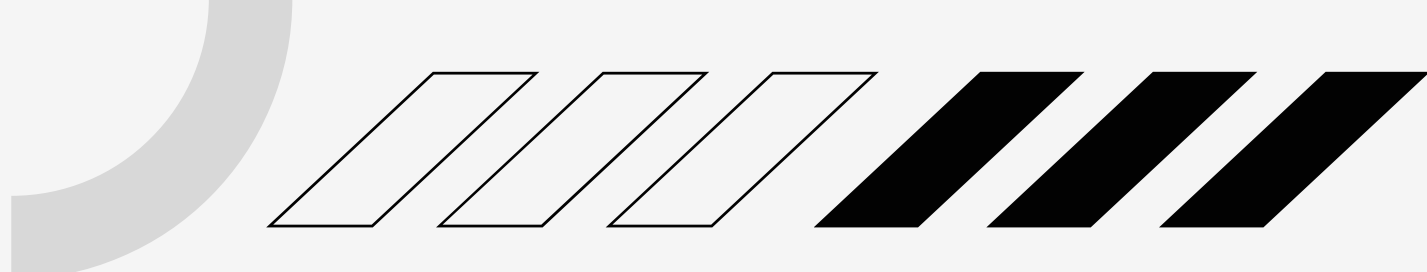
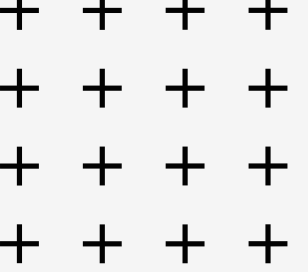


C15



C16





SPECYFIKACJA TECHNICZNA

PL



Odporność na ścieranie
> 45 000 (osnowa, wątek)
PN-EN ISO 12947-2:2017-02

Przesunięcie nitek w szwie
1, 5
(osnowa, wątek)
PN-EN ISO 13936-2:2005

Trudnopalność
Test Papierosa
PN-EN 1021-1:2014-12

UK



Abrasion Resistance
> 45 000 (warp, weft)
PN-EN ISO 12947-2:2017-02

Seam slippage
1, 5
(warp, weft)
PN-EN ISO 13936-2:2005

Flame retardant
Cigarette test
PN-EN 1021-1:2014-12

DE



Scheuerfestigkeit
> 45 000 (kette, fäden)
PN-EN ISO 12947-2:2017-02

Nahtverschiebung
1,5
(kette, fäden)
PN-EN ISO 13936-2:2005

Flammhemmend
Zigarettest
PN-EN 1021-1:2014-12

Karta techniczna jest dokumentem poglądowym, określenie faktycznej gramatury, oraz koloru tkaniny może nastąpić dopiero po jej wyprodukowaniu.

