

fine AMPLIGAME

SC3 USER'S GUIDE



B2B Version:23-07

CONTENTS

Product Description	1-4
Guidelines for Use	4-9
Function Key Instruction	9-14
Computer Set-Up (Windows & MAC OS)	14-18
Software Settings (Recording&Broadcasting)	19-21
Troubleshooting	21-22
Important Notice	22
Specification	22-23

WHAT'S IN THE BOX

1. Gaming Mixer
2. USB Cable
3. 3.5mm TRS to 3.5mm TRRS Audio Cable (Only for connecting phone to LINE OUT)
4. User's Manual

PRODUCT DESCRIPTION

Interface Description

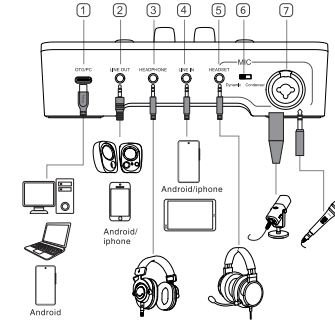
- ① Type-C Interface-Connect to device like computer, Android phone or charged to supply power for the mixer.
- ② Line Out-Connect to 3.5mm speaker for audio output or phones for live broadcast. (It is not suggested to connect headphones, the audio may be very low.)
- ③ Headphone Interface-Connect to 3.5mm headphones (TRS or TRRS) for monitoring.
- ④ Line In-Connect to external 3.5mm audio input from device, like phone or tablet, etc. for audio input, as background music or auxiliary sound source.
- ⑤ Headset-Connect to 3.5mm TRRS headset.

1

- ⑥ Dynamic/Condenser Switch-Switch dynamic or condenser according to the type of XLR microphone that is connected to the XLR interface for better effect.
- ⑦ Combo Input Interface-Provide XLR interface for XLR dynamic or XLR condenser microphone, or 1/4" interface for TRS or TRRS dynamic microphone.

Tips:

- If want to connect iPhone or iPad to ② LINE OUT or ③ LINE IN interface, please first to externally supply power to the mixer. (You can connect it to computer/phone/power bank/charger.)
- If ④ Headset interface and ⑦ Combo Input Interface are connected at the same time, XLR or 1/4" microphone signal will be automatically cut off. Mixer will give priority to the headset for recording.



2

Function Key Description

To get more detailed operations, please refer to "Function Key Instruction" in page 9-14.

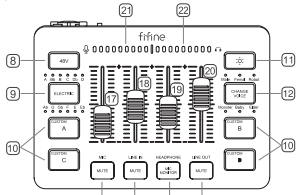
- ⑧ 48V Phantom Power-Transmit phantom power to the condenser microphone. (Please check if your XLR condenser microphone needs 48V phantom power to avoid damaging your device. Make sure to turn off the function when not required.)
- ⑨ Electric Button-Switch electric tone. There are 12 kinds of tones, with corresponding indicators. (Only available for microphone recording.)
- ⑩ Customized Button-Used to customized sound effects recording and playback.
- ⑪ RGB Button-Switch RGB mode or color. There are 5 kinds of modes, including, colorful flowing, single-color changing, single-color breathing, single-color marquee and static color option.
- ⑫ Voice Change-Change voice mode. There are 6 kinds of voice modes, including, male, female, robot, monster, baby and elder.
- ⑬ Microphone Mute-Mute or unmute MICROPHONE channel.
- ⑭ Line In Mute-Mute or unmute LINE IN channel.
- ⑮ Mic Monitor-Turn on or off microphone real-time monitoring.
- ⑯ Line Out Mute- Mute or unmute LINE OUT channel.
- ⑰ Mic Channel Volume Slide Fader-Increase or decrease MIC volume.
- ⑱ Line In Channel Volume Slide Fader-Increase or decrease LINE IN channel volume.
- ⑲ Headphone Channel Volume Slide Fader-Increase or decrease HEADPHONE output volume.
- ⑳ Line Out Channel Volume Slide Fader-Increase or decrease LINE OUT channel volume.
- ㉑ Input Channel LED Indicator-To indicate MIC and LINE IN volume status.

3

- ② Output Channel LED Indicator-To indicate HEADPHONE and LINE OUT volume status.

Tips:

Electric tone and voice change function cannot be used at the same time, please select one of them to use.



GUIDELINES FOR USE

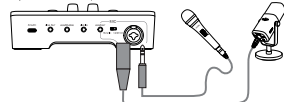
Setup of Interface Connection

1. Power Supply-Connect the mixer with your computer or Android phone for power up via included USB cable. Plug the Type-C end to the Type-C interface on the mixer, and plug the other end to your computer. When the buttons and indicators lighted up means that the mixer powers on.

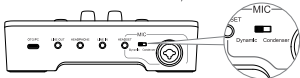


4

2. Connect Microphone-Plug the female end of the XLR cable (not included) to your microphone, and the male end into the XLR interface on the mixer. (Or you can plug a 1/4" dynamic microphone for use.)



3. Select Mic Type-Switch dynamic or condenser according to the type of your microphone. (Switch Dynamic mode when connected XLR dynamic mic or 1/4" dynamic mic. Switch Condenser mode when connected XLR condenser mic.)

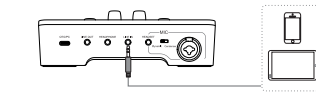


4. Connect Headphones-If you need to monitor. Plug your 3.5mm headphones (TRS or TRRS) into the HEADPHONE interface for audio monitoring. Please ensure that MIC MONITOR is turned on (the button will be reflected white light) and HEADPHONE channel volume not to zero during recording monitoring.

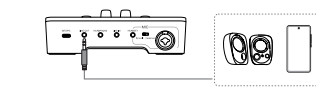


5

5. Connect Auxiliary Audio-If you need background music or auxiliary audio, please connect the 3.5mm audio device, like phone or tablet, to LINE IN interface.(Can not use the provided dedicated 3.5mm cable for LINE IN connection, or the connection will be invalid.)

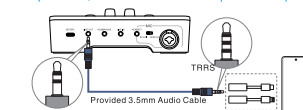


6. Connect Output Device-If you need to output the recorded sound, you can connect 3.5mm speaker to LINE OUT interface. Or you can connect phones for live broadcast.



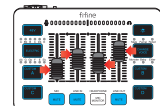
Tips: If need to connect phone to LINE OUT interface, please use the provided dedicated 3.5mm to 3.5mm audio cable, or the connection will be invalid.

Step: Connect the audio cable TRS end to mixer, and TRRS end to phone. If your phone jack is type-c or lightning, connect TRRS end to a adapter cable, and then connect the adapter cable to phone.



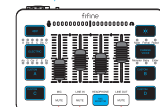
6

7. Adjust Volume-After setting the above, you can adjust the volume of each channel via volume slide fader on the mixer.



8. Control Mute Status-Operate the mute button on the mixer to turn on or off mute function of each channel if you need.

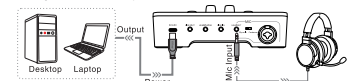
Tips: The following picture shows that the mute buttons in white light, which means that channels in mute status, and you will not hear any sound from mic, line in and line out channel.



Example of Interface Usage

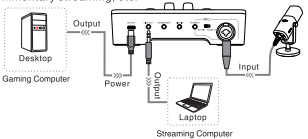
1. Record and Monitor by Headset

The mic of headset inputs recording into the mixer, and the mixer outputs audio to the headphones of headset. Suggested to game voice, game commentary, etc.

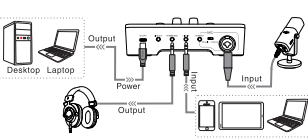


7

2. Two PC Setup
Setting up streaming PC. Suggested to gaming streaming, commentary streaming, etc.

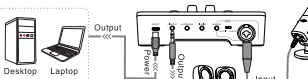


3. Auxiliary Sound Source and Monitor
Setting up headphones to monitor microphone and auxiliary sound source. Suggested to game voice, audio recording/editing, etc.

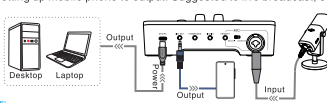


8

4. Record and Output
Setting up microphone record and speaker output. Suggested to audio recording, meeting speech, volume increasing, etc.



5. Live Broadcast by Mobile Phone
Setting up mobile phone to output. Suggested to live broadcast, etc.



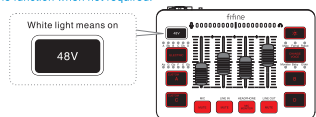
Tips:

Use provided 3.5mm audio cable when connect Phone to Line Out.

FUNCTION KEY INSTRUCTION

48V Phantom Power

- Short press the button to turn on or off 48V Phantom Power.
- Tips: Please check if your XLR condenser microphone needs 48V phantom power to avoid damaging your device. Make sure to turn off the function when not required.

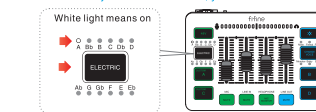


Electric Button

- Short press to turn on electric tone, while long press for 2 second to turn off.

There are 12 kinds of electric tones option. Short press to switch tone, and corresponding indicator will be lighted up. (Only available for microphone recording.)

Tips: Electric tone and voice change function cannot be used at the same time. When you use electric tone, you can not use voice change.



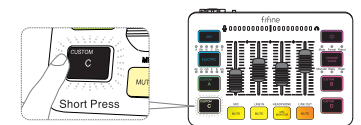
Customized Button

There are four buttons for customized recording, each of which can be recorded up to 15 seconds. Customized recording audio can be originated from computer playback, microphone or line in recording. Recording Step-Long press and hold the button until the button reflected white light, means that recording starts. Keep pressing and holding the button to record. When you release, the recording is over (the recording will be automatically end if exceeds 15 seconds).



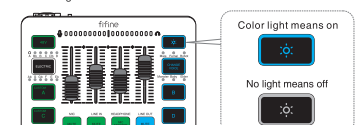
Playback Step-Short press the button. When the white light flashes, indicating that the customized recording audio is playing. If the white light not flashes, indicating that there is no recorded audio to play.

10



RGB Button

Long press for 2 seconds to turn off RGB light, short press to turn on RGB light or select RGB mode or color. No light means the function off. Color light means the function on.



RGB effect memory function: After long press to turn off RGB, it will start again from the first default mode. After the mixer is powered on again, the RGB will stay in the same RGB effect before it power off. (The four dynamic changing modes will start again from the default color.)

There are 5 kinds of RGB modes, including, colorful flowing, single-color changing, single-color breathing, single-color marquee and static color option (red, pink, purple, blue, cyan, green, yellow).

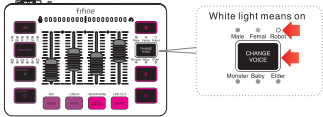
11

Voice Change

Short press to turn on voice change, while long press for 2 second to turn off.

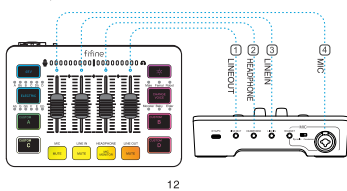
There are 6 kinds of voice modes, including, male, female, robot, monster, baby and elder. Short press to switch, and corresponding indicator will be lighted up.

Tips: Voice change and electric tone function cannot be used at the same time. When you use voice change, you can not use electric tone.



4-Channel Design

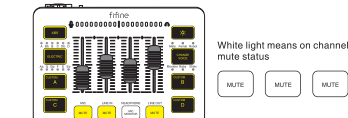
Total of 4 channels are set on the mixer, which give individual control for Mute and Volume of MICROPHONE, LINEIN and LINEOUT channels, Mic Monitor and Volume of HEADPHONE channel.



12

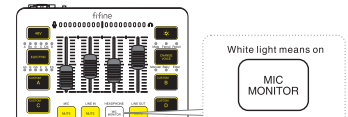
Mute Control

The mute status of Microphone channel, Line In channel and Line Out channel can be controlled individually. Short press to turn on or off mute status.



Mic Monitor

Short press to turn on or off microphone real-time monitoring.



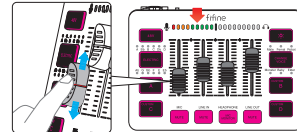
Volume Slide Fader

The volume level of Microphone channel, Line In channel, Headphone Channel and Line Out channel can be controlled individually. Push it up to increase the volume, and push it down to decrease the volume.

When the volume is increased or decreased, the LED light on the mixer panel will light up to indicate volume status.



13

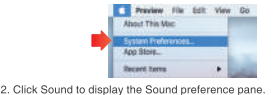


COMPUTER SET-UP (Windows & MAC OS)

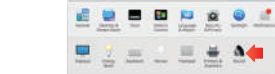
Apple MAC OS

Hook up the mixer to Mac. When the buttons and indicators lighted up means that the mixer powers on. Your Mac will automatically install the driver of the mixer. There may be no pop-up message reminding this process though.

1. Go to the System Preferences.

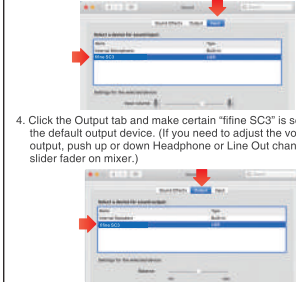


2. Click Sound to display the Sound preference pane.



3. Click the Input tab and make certain "fine SC3" is selected as the default input device. (If you need to adjust the volume of input, push up or down Mic or Line In channel volume slider fader on mixer.)

14



Windows

Hook up the mixer to Computer. When the buttons and indicators lighted up means that the mixer powers on. Your computer will automatically install the driver of the mixer. There may be no pop-up message reminding this process though.

Input Settings

1. Right click the speaker icon at the bottom right of the screen. Click "Open Sound Settings".

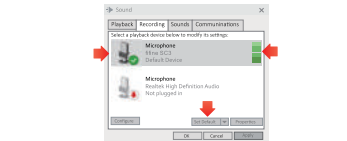


15

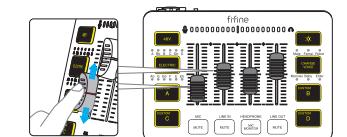
2. Click the Sound Control Panel.



3. Click the Recording tab, and choose "fine SC3" as the default device. When input device comes sound, the volume meter will turn green and bounce. If it remains unchanged, please reset the computer and replug input device in mixer.



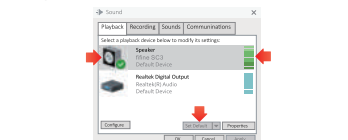
4. If you need to adjust the volume of input, push up or down Mic or Line In channel volume slider fader on mixer.



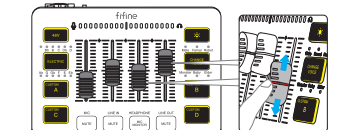
16

Output Settings

1. Click the Playback tab, and choose "fine SC3" as the default device. When you playback audio, the volume meter will turn green and bounce. If it remains unchanged, please reset the computer and replug the headphones or output device in mixer.



2. If you need to adjust the volume of output, push up or down Headphone or Line Out channel volume slider fader on mixer.



Tips: (Applicable for Mac and Windows)

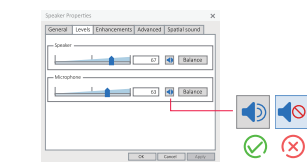
1. Check if your microphone is turned on. Make sure that the Mic Channel volume of mixer is not to zero or not in mute state before recording.

2. Make sure that the Headphone or Line Out Channel volume of the mixer is not to zero, or Line Out Channel not in mute status before listening audio.



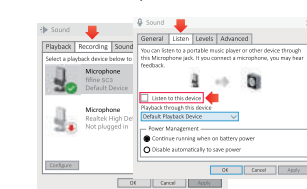
17

3. Make sure the Speaker and the Microphone are active under the Levels tab.



4. If the computer prompts that it's unable to identify this USB devices, please restart computer and replug the mixer in other USB port.

5. If your computer runs windows, when you are using any recording software (such as Audacity) or chatting software (such as Skype), please click the "Recording" tab and click the fine SC3 - Properties - Listen - check off the box "Listen to this device" - Apply. Or you would hear double audio just like echo.



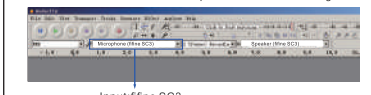
18

SOFTWARE SETTINGS (Recording & Broadcasting)

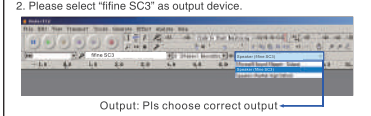
Recording Software Settings

Takes Audacity for example

1. Please select "fine SC3" as the input device from the setting.



2. Please select "fine SC3" as output device.



3. If you need to monitor during recording, please ensure that the Mic Monitor of Headphone channel is turned on. (White light means Mic Monitor on).

4. Make sure to check off the box "Listen to this device" from the sound system when you are using any recording software, or else you would hear duet of yourself just like too much echo. Please refer to the fifth point of Tips on page 18 for details.

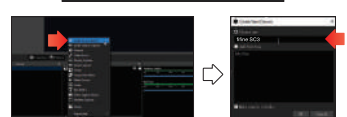
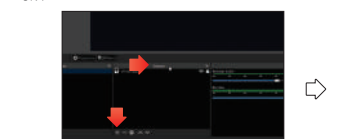
Tips: If the recording software (such as Audacity) doesn't recognize the mixer, please log out the software first, replug the mixer in the computer, and then launch the software again. Then the mixer will be in the drop down option of input and output device.

19

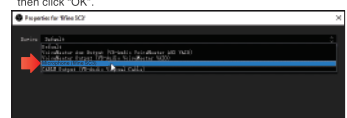
Broadcasting Software Settings

Takes OBS for example

1. Click the "+" button under "Sources" panel. Choose "Audio Input Capture" to add a source, enter the name of the source, then to "OK".

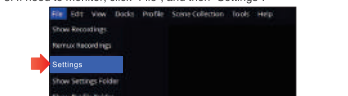


2. Select "fine SC3" as input device under "properties" window, and then click "OK".

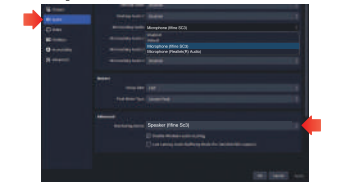


20

3. If need to monitor, click "File", and then "Settings".



4. Choose "Audio" and find "Advanced". Set "fine SC3" as the monitoring device, and then "OK".



TROUBLESHOOTING

Problem	Possible Solution
Excessive Hum and Noise	<ul style="list-style-type: none"> Check to make sure all outlets are properly grounded. Keep audio cables away from power adapters and power supplies. Reconnect the accessible device to the mixer. Check whether the cable of microphone or other device are worn, and replace it with a new one.

21

Unable to Hear Microphone	<ul style="list-style-type: none"> Make sure that the mic channel is not in mute state (mute button in white light means mute status), and the microphone volume is not turned to zero. Make sure output and input are turned on under computer setting. Ensure that microphone setup steps have been gone through. Activate 48V phantom power if your mic need it. (48V phantom power button in white means on) If Headset interface and combo input interface are connected at the same time, the mixer will give priority to Headset recording. Make sure that record with the correct microphone.
iPhone and iPad Cannot be Used with the Mixer	<ul style="list-style-type: none"> If want to connect iPhone or iPad to OUTPUT or INPUT interface, please first to externally supply power to the mixer.

IMPORTANT NOTICE

- When you charge to supply power for the mixer, please do not use it under fire or high temperature condition.
- Do not attempt to disassemble the product without authorization, which may affect the product use.
- Make sure use the mixer with compatible devices for better recording experience.
- When connecting external devices, carefully plan how the wires will be placed. Protect any connected cables from being pinched.
- When unplugging any connected devices or cables, please pull on their plugs or connectors. Don't forcefully tug on its cable.
- Don't place any heavy items on top of the mixer.
- Avoid leaving the mixer in the open air or in areas where temperature exceed 110° F (43° C) for extended periods. Extremely high humidity should also be avoided.

22

SPECIFICATION

Microphone Input or Line Input Frequency Response: 20 Hz-20 kHz Dynamic Range: 75dB S/N Ratio: >75dB THD+N: 0.1% Gain Range: 50dB	Headphones Output Frequency Response: 20 Hz-20 kHz Dynamic Range: 90dB S/N Ratio: >85dB THD+N: 0.01% Power: 15mW/32Ω Impedance: 32Ω-250Ω
General Specification Data Transmission: USB 2.0 Sampling Rate: 48KHz/44.1KHz Power Consumption: DC5V/500mA	Line Output Frequency Response: 20 Hz-20 kHz Dynamic Range: 85dB S/N Ratio: >80dB THD+N: 0.01% Max Output Level: +10dBV

CONTACT US

Get Social:
Facebook page: <http://bit.ly/FilmePage>
Contact Info:
E-mail: web@filme.cc

More product inquiries can be found on the website.
Company Website: <https://filmemicrophone.com/>

WARRANTY

Filme microphone warrants its hardware product defects in materials and workmanship for a period of one year from the date of original retail purchase, provided the purchase was made from authorized Filme microphone dealer. This warranty is void if the equipment is altered, misused, mishandled, suffers excessive wear or is serviced by any parties not authorized by Filme Microphone. For warranty service, contact your local distributor or web@filme.cc.

23