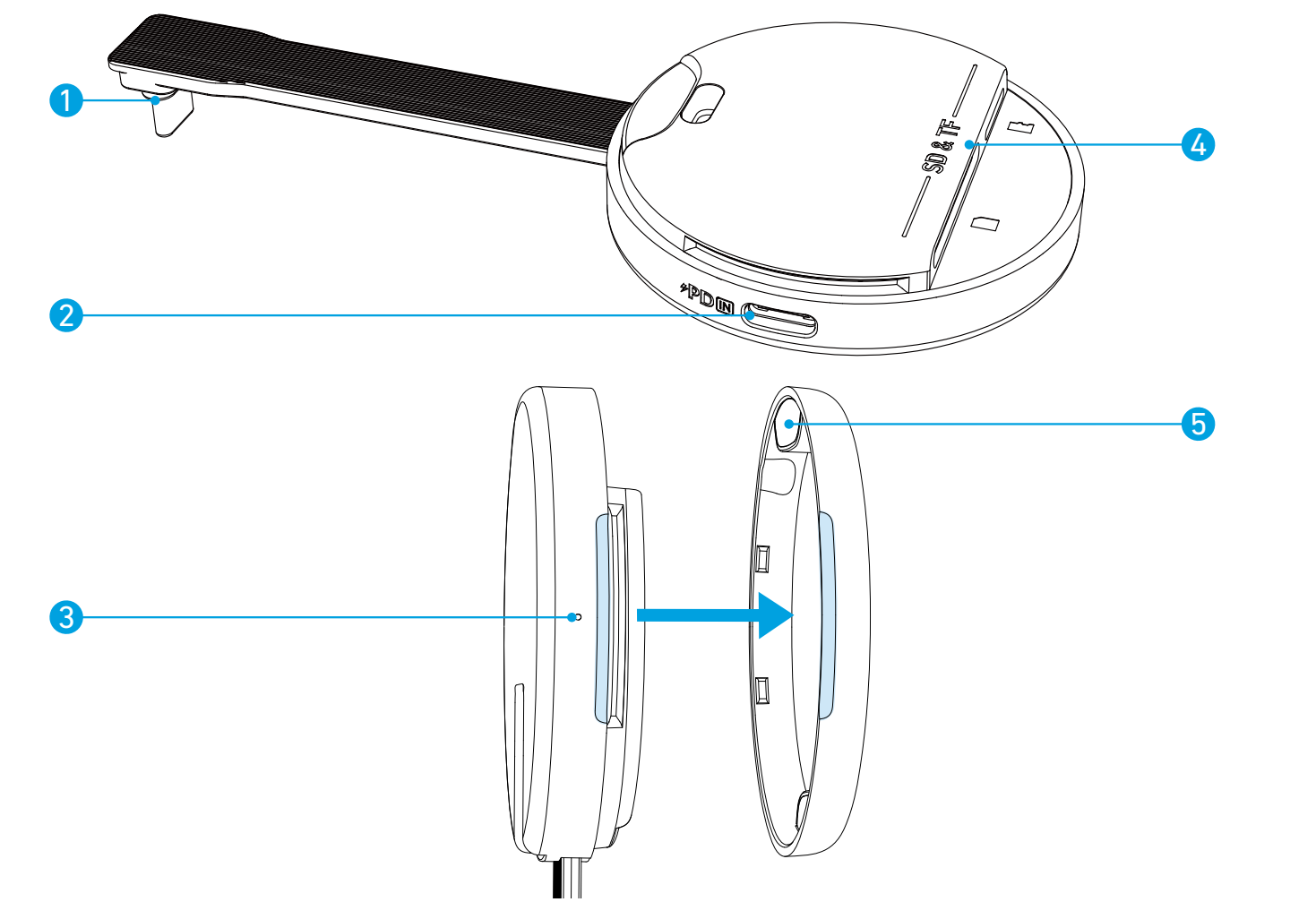


At a Glance

Your Anker MagGo USB-C adapter provides a quick and easy way to access data stored on various types of memory cards.

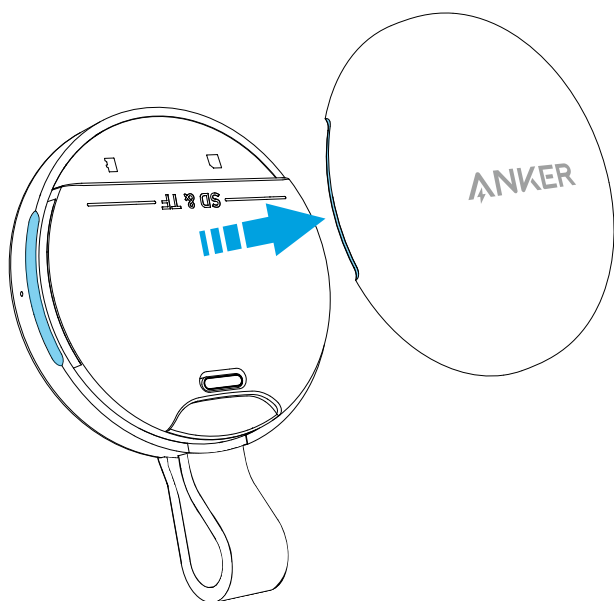


No.	Item	Description
1	USB-C Connector	Connects to the USB-C port of your device.
2	PD IN Port	Connects to a PD charger for charging the host. <ul style="list-style-type: none">Charger not included.
3	LED Indicator	Turns white when connected to the host or the PD-IN power.
4	SD & TF Card Slots	Insert an SD or a TF memory card.
5	Magnetic Cover	Magnetically covers the side where the SD & TF card slots are located.

Using Your Product

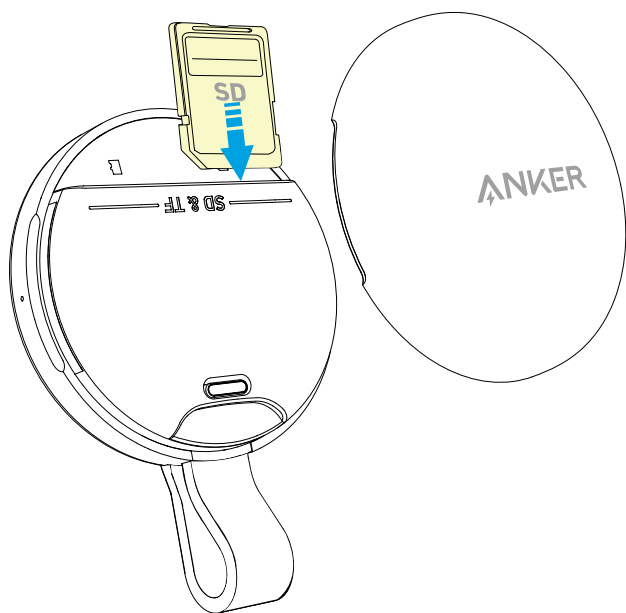
1. Remove the magnetic cover.

1



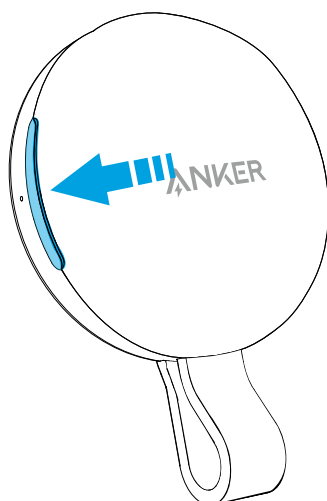
2. Insert an SD or a TF memory card.

2

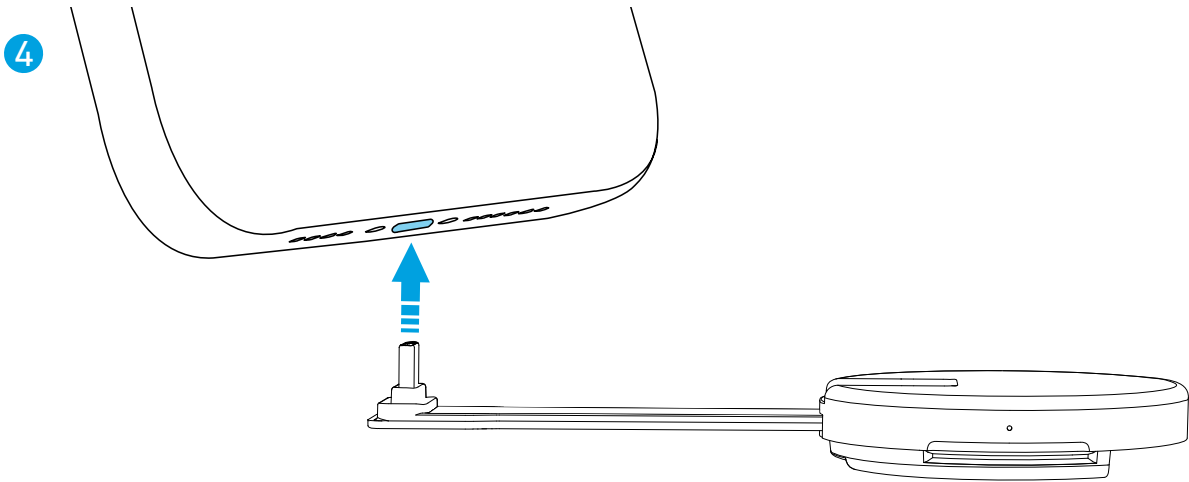


3. Close the magnetic cover.

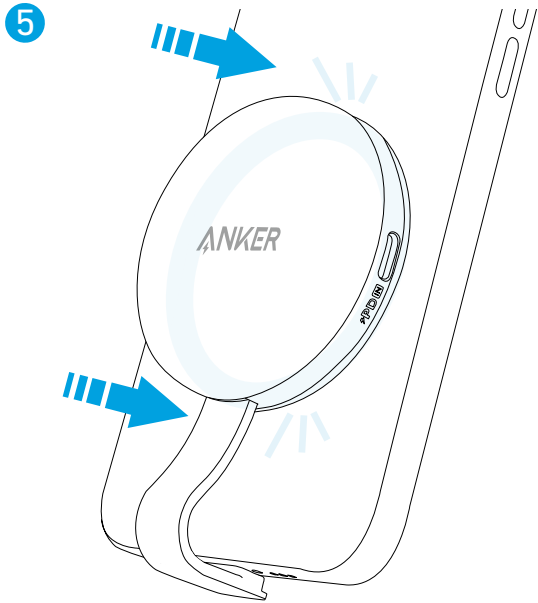
3



4. Plug the USB-C connector into the USB-C port of your device.



5. Magnetically attach the adapter to the back of your iPhone (15 or later) that supports the magnetic ring on the back.



💡 For devices without a magnetic ring, such as Android phones, laptops, etc., magnetic attachment is impossible, but data transfer can still proceed normally.

SD/TF Card Recomendations for Real-time ProRes Recording

💡 • To record in ProRes video format with the Apple original camera app, use an SD/TF card that supports the minimum write speed.

Video Format	Recommended Write Speed	Recommended Capacity
4K60 ProRes	≥220MB/s	≥256G
4K30 ProRes 4K24 ProRes	≥150MB/s	≥128G
HD30 ProRes HD60 ProRes	≥100MB/s	≥64G

Specifications

Upstream Port Transfer Speed	10Gbps
SD/TF Transfer Speed	312MB/s
Compatible Memory Cards	1xSD+1xTF, SD 4.0/3.0, UHS-II/UHS-I, SDXC, SDHC, SD, MMC, RS-MMC, Micro SDXC, Micro SD, Micro SDHC
PD-IN	45W PD-IN Max <ul style="list-style-type: none">The adapter takes 2.5W for its own operation and provides 42.5W at maximum for host devices.
Working Temperature	0°C~35°C (32°F~95°F)
Storage Temperature	-40°C~80°C (-40°F~117°F)

Note: The 'x' of SN Code: xxxxxxxxxxxxxxxx is a variable, see below table.

Variable 'x'	Range of variable	Content
Seventh	0-9 or A-F	Denotes the hardware version which is not effected on the safety compliance.
Eighth	8,9,A,B,C...	Denotes the year, 8 means 2018, 9 means 2019, A means 2020, B means 2021, C means 2022, and so on.
Ninth and tenth	01,02,03...	Denotes weeks, 01 means the first week in this year, 02 means the secondary week in this year, and so on.
Eleventh	1-7	Denotes date, 1 means Monday, 2 means Tuesday..., 7 means Sunday and so on.
The last five	00001-99999	Denotes serial No.