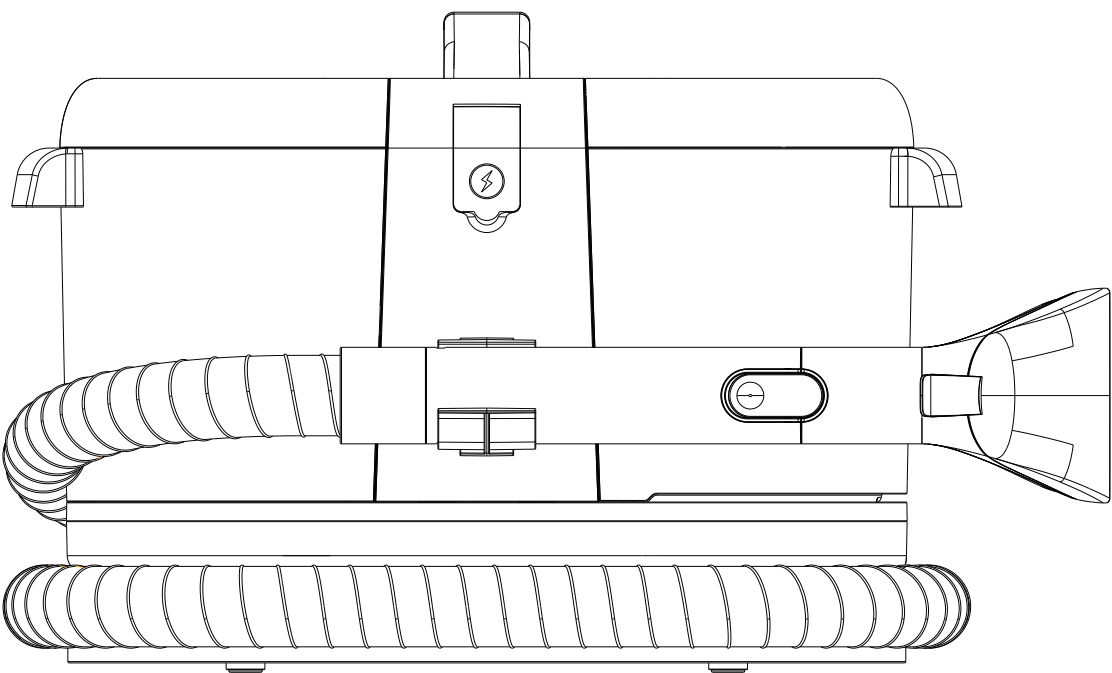


PRETTYCARE

PRETTYCARE



Cordless Portable Carpet Cleaner

Please read this manual carefully before use and be sure to keep it properly.

Contents

|                           |    |
|---------------------------|----|
| 1. Precautions            | 01 |
| 2. Product Introduction   | 03 |
| 3. Installation and Use   | 04 |
| 4. Troubleshooting        | 10 |
| 5. Product Specifications | 11 |

Precautions

Before using this product, please read all the contents of this manual carefully and install the machine according to the steps in this manual. Keep this manual properly. If you transfer the product to a third party, please include this manual with the machine. Any operation that does not comply with the instructions in this manual may cause product damage or serious personal injury. This product is only suitable for use in regular household environments and is not suitable for industrial or outdoor use.

The product is not suitable for individuals with physical, sensory, or intellectual disabilities or lack of experience and common sense (including children) unless supervised or guided by others to ensure safe use. If the adapter is damaged, please stop using it. Please contact the professional after-sales department of our company to replace it to avoid harm. Keep the airflow passage and moving parts of the product away from long hair, loose clothing, and other parts of the body. Do not point the handle, accessory nozzle, or tool at the eyes, ears, or put them in the mouth. When using, if the body overheats, makes unusual noises or smells, or the suction is weak, stop using it immediately and contact the professional after-sales department of our company. After using the machine, please clean the dirty water tank in time, keep the ventilation path unobstructed, and avoid blockage that may cause a decrease in suction and motor heating, thereby affecting the service life of the machine. After using the machine, please store it in a dry place, as a damp place may affect the insulation and service life of the electrical components. The machine body cannot be soaked or rinsed with water. Please check the unobstructed condition of the suction nozzle regularly, and promptly remove any blockages to avoid decreased suction, which may affect the performance of the machine. When the machine is running, do not put fingers or other foreign objects into the suction port. Do not attempt to repair the machine yourself when it malfunctions. Please contact the after-sales department of our company for assistance. All technical and other data expressed in this product manual are obtained by our company or designated third-party testing companies, and the final interpretation right belongs to our company.

▲About the scope of product use

- This product is suitable for washing, brushing, and machine washing of fabric household items such as carpets and fabric sofas. Please test on the corners first for special materials.
- Do not use this product near or on flammable or explosive objects or surfaces, as there is a risk of fire and explosion.
- Do not use this product near a working fireplace or heater to prevent deformation of the machine's casing.
- Do not vacuum high-temperature substances (such as lit cigarettes, matches, or hot ashes), fine particles (such as lime, cement, sawdust, plaster powder, ashes, charcoal powder), hazardous materials (such as solvents, descaling agents), chemical substances (such as acidic substances, cleansers), and other substances with unknown physical characteristics.
- Do not use this cleaner to suck up detergents, kerosene, gasoline, alcohol, paint, perfume, etc., as these liquids may cause short circuits, fires, or explosions.
- Do not use this cleaner to suck up toners and color powders used in laser printers or copiers, as these objects may cause fires or explosions.
- Do not use this cleaner to suck up sharp objects, such as glass shards, small toys, pins, paper clips, pebbles, plaster, large pieces of paper, etc., as these objects may cause blockages and damage to the machine and floor.

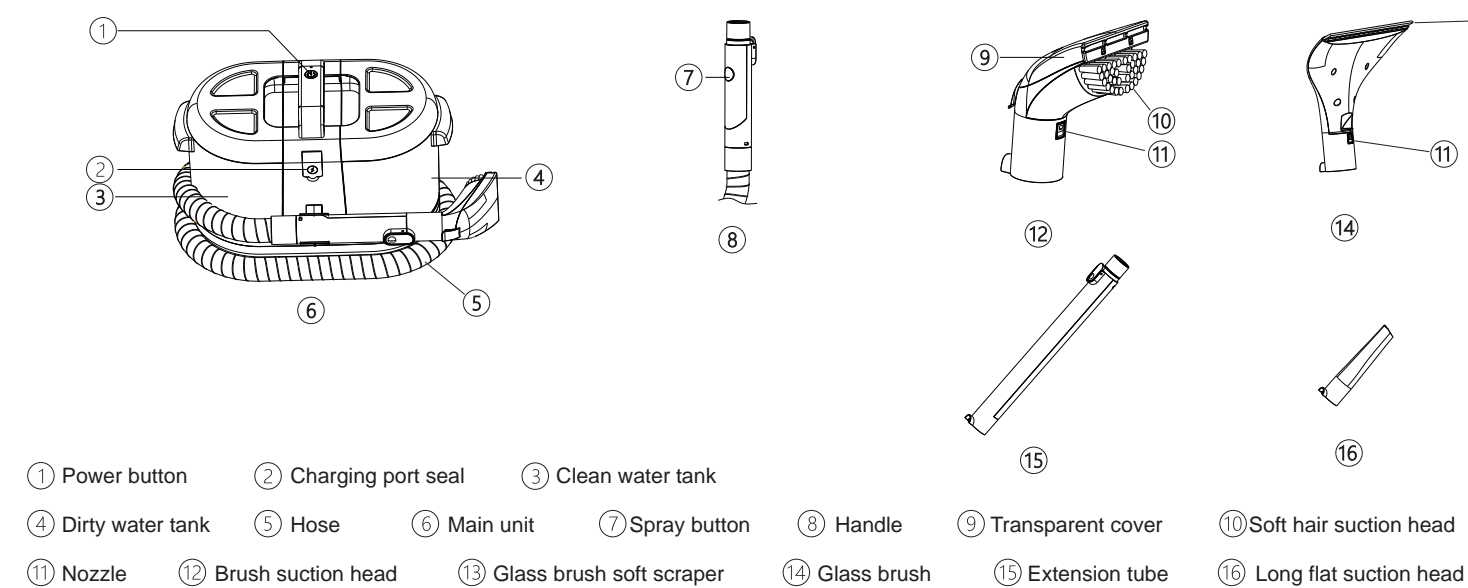
About the machine

Do not dismantle closed machines by yourself. The machine does not have parts that customers can repair themselves, and do not attempt to change the performance of the machine, as it may cause dangers. Using an adapter that does not correspond to the specifications of this product will damage the machine and may cause harm to the user. Be extra cautious when cleaning stairs to prevent falling. Do not shake or violently bump the machine up and down to prevent sewage from entering the motor. When the motor is running, do not lift or carry the power tool up and down, and do not tilt or lay the machine sideways to prevent dirty water from entering the motor. After using the machine, place it against the wall to prevent tripping.

Product Introduction

• Component Names

△ Note: The manual images are for reference only. Please refer to the actual items in the packaging box for specifics.

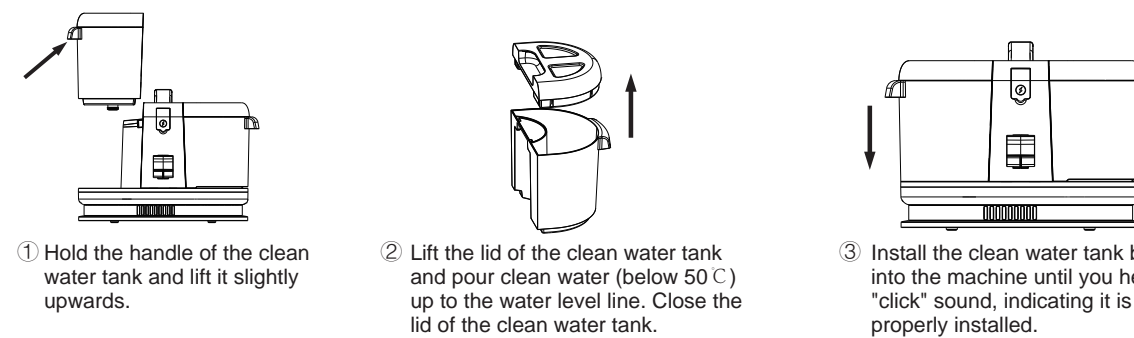


• Packaging Details

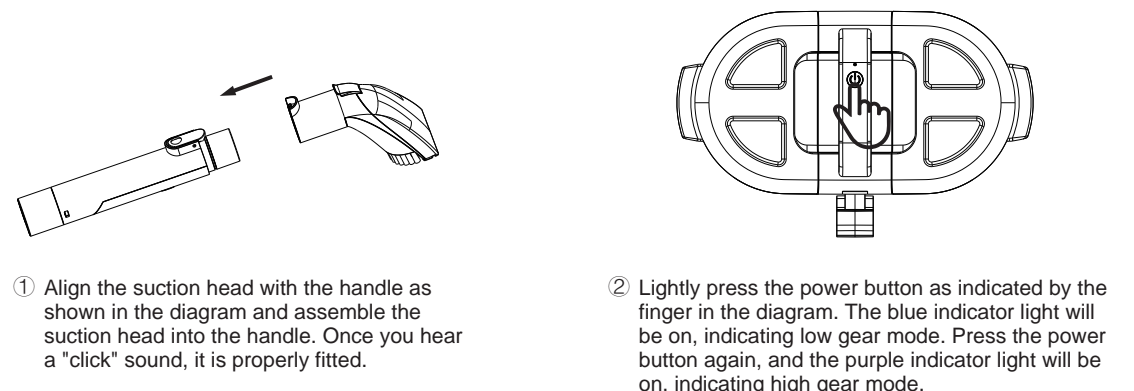
| Wireless fabric cleaning machine | brush suction head | glass brush | extension tube | long flat suction head | adapter | manual | handle latch |
|----------------------------------|--------------------|-------------|----------------|------------------------|---------|--------|--------------|
| 1                                | 1                  | 1           | 1              | 1                      | 1       | 1      | 1            |

Installation and Use

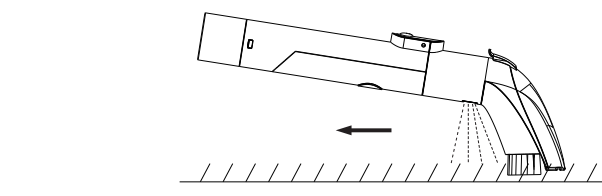
Installation and Removal of the Clean Water Tank



Installation of Suction Head Accessories and Usage Scenarios

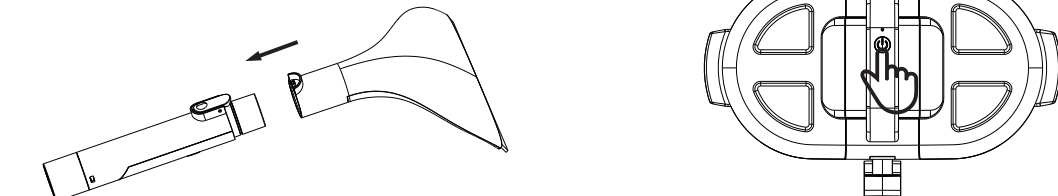


Installation and Use of Suction Head Accessories

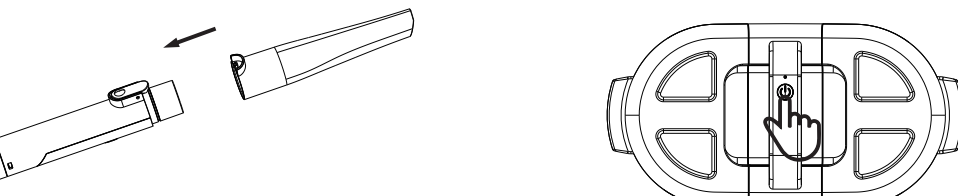


③ As shown in the diagram, place the suction head on carpets, sofas, and other furniture. Press the spray button, water will spray from the nozzle. Then, press the suction head downwards with force and move it in the direction indicated by the arrow. The suction head will then draw dirty water into the dirty water tank.

Installation and Use of Glass Brush Accessories

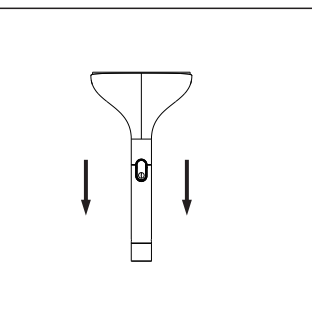


① Align the glass brush with the handle as shown in the diagram, then assemble the brush head into the handle. Once you hear a "click" sound, it is properly assembled.



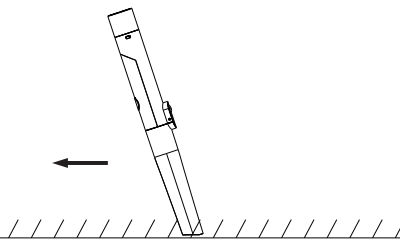
② Lightly press the power button as indicated by the finger in the diagram. The blue indicator light will be on, indicating low gear mode. Press the power button again, and the purple indicator light will be on, indicating high gear mode.

Installation and Use of Glass Brush Accessories



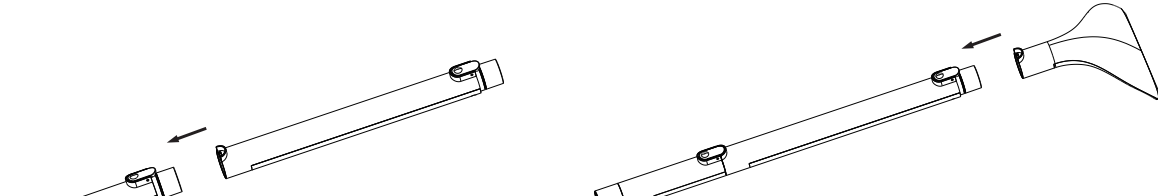
③ As shown in the diagram, place the glass brush flat in front of the glass. Press the spray button, water will spray from the nozzle. Then, press the glass brush inward with force and move it in the direction of the arrow. The glass brush will draw water from the moving area of the glass into the dirty water tank.

Installation and Use of Long Flat Suction Head Accessories



③ As shown in the diagram, place the long flat suction head on carpets, sofas, or blankets, and then move it in the direction indicated by the arrow. The long flat suction head will draw fine debris into the dirty water tank.

Installation and Use of Extension Tube Accessories



① Align the long flat suction head with the handle as shown in the diagram, then assemble the suction head into the handle. Once you hear a "click" sound, it is properly assembled.

② Align the suction head, glass brush, or long flat suction head with the extension tube as shown in the diagram, then assemble it into the extension tube. Once you hear a "click" sound, it is properly assembled. The main function of the extension tube is to extend the length of the fabric cleaner for reaching difficult areas when using the handle.

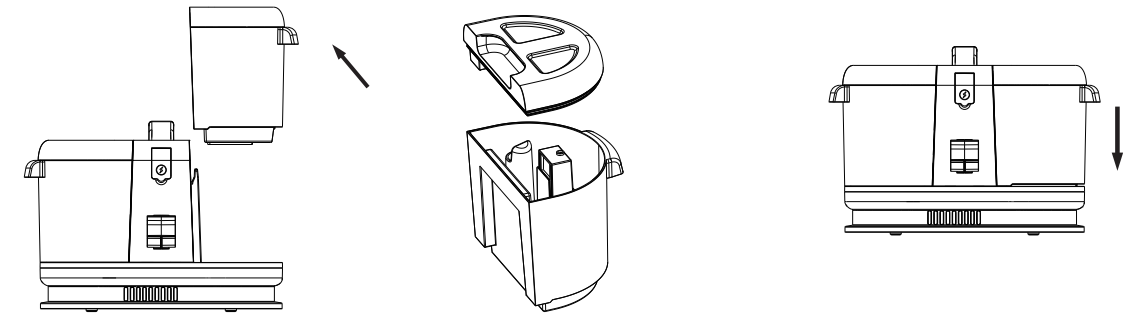
Installation and Use of Handle Sleeve Accessories



① Take out the main unit from the packaging box, and also take out the handle sleeve accessory. Align the handle sleeve with the handle sleeve hole as shown in the diagram, then assemble the handle sleeve into the main unit.

② After the handle sleeve is assembled, when the fabric cleaner is not in use, as shown in the diagram, place the handle on the handle sleeve, and then store the fabric cleaner.

Disassembling, Cleaning, and Installing the Dirty Water Tank

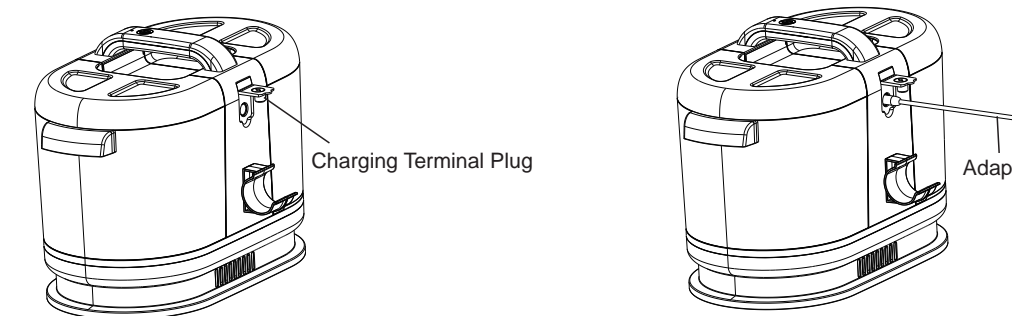


① Hold the handle of the dirty water tank and lift it slightly upwards.

② Lift the lid of the dirty water tank and pour out the dirty water inside. Clean the dirty water tank with clean water.

③ After cleaning, cover the dirty water tank with the lid, then install the dirty water tank back into the machine until you hear a "click" sound, indicating it is properly installed.

Disassembly, Cleaning, and Installation of the Dirty Water Tank



① Grasp the arc-shaped protrusion at the bottom of the charging terminal plug, then remove the charging terminal as shown in the diagram.

② As shown in the figure above, plug the adapter charging port into the charging terminal of the machine, and then the adapter can be charged normally when powered on, the red light will flash when charging, and the blue light will be on when fully charged.

Troubleshooting

| Common Problems                   | Possible Causes                                                            | Solutions                                                                              |
|-----------------------------------|----------------------------------------------------------------------------|----------------------------------------------------------------------------------------|
| Machine does not work             | Battery pack is empty                                                      | Charge the main unit to full before turning it on                                      |
|                                   | Battery pack is damaged                                                    | Please contact customer service for assistance                                         |
|                                   | Main unit is plugged in for charging                                       | Remove the adapter to start the machine normally                                       |
| Weak suction power of brush head  | Dirty water tank is full                                                   | Clean the dirty water tank promptly                                                    |
|                                   | Insufficient battery pack power                                            | Charge the battery pack in a timely manner                                             |
| Water spray nozzle does not spray | Water pump is malfunctioning                                               | Please contact customer service for assistance                                         |
|                                   | Water tank is empty                                                        | Add water to the tank                                                                  |
|                                   | Battery pack is malfunctioning                                             | Please contact customer service for assistance                                         |
| Brush head does not suction water | Dirty water tank is full                                                   | Clean the dirty water tank                                                             |
|                                   | Check if the filter cover at the bottom of the dirty water tank is removed | Place the filter cover back into the square slot at the bottom of the dirty water tank |
| Other problems                    |                                                                            | Please contact customer service for assistance                                         |

Product Specifications

| Product Model | Adapter Parameters | Rated Power | Rated Voltage | Dirty Water Tank Capacity | Clean Water Tank Capacity |
|---------------|--------------------|-------------|---------------|---------------------------|---------------------------|
| PC808         | 27V 0.5A           | 170W        | 21.6V         | 1.5L                      | 1.65L                     |