



BX-C08 Specification

Version : V1.1 Release date : 2022.9.6

Catalog

Guiding	1
Safety Notes	1
Feature	2
Function Introduction	3
Control area	3
Multiple communication mode	3
Multiple management platform	3
Large storage capacity	3
Support GPS position	3
Support Mobile App	4
Flexible program release methods	4
Online update firmware	4
Support lots of sensors	4
Timer switch screen	4
Secondary development	5
Technical specifications	6
Interface Diagram	8

Guiding

Safety Notes

- ◆ Input voltage is 3.5V ~ 5.5V, please make sure the quality of the power supply of BX-C series.
- ◆ Please make sure that all the power supply cables are plugged off. When you want to connect or plug off any signal or controlling cables.
- ◆ Please make sure that all the power supply cables and signal cables are plugged off when you need to put in or take off the hardware equipment.
- ◆ Please make sure the environment is clean, dry and ventilated. When you use this product, also, do not put this product to a high temperature and wet environment.
- ◆ This product is electronic products, please keep away from fire, water source and flammable & combustible products.
- ◆ There's high pressure components in this products, please do not open the box and repair it by yourself.
- ◆ Turn off the power supply immediately when you find smoking, peculiar smell or something unusual. And contact with us soon.

Feature

- ◆ One card for one screen, suitable for small intel screen, vehicle screen.
- ◆ High performance CPU, hardware decoding and smooth HD video playing.
- ◆ Total pixel $\leq 128K$ points: $512 * 256$, width ≤ 1024 , onboard 8 nos T75 interfaces;
- ◆ Support 2 video areas;
- ◆ 4Gbyte storage capacity, USB storage can be expansion to 256GB; support USB disk plug and play ,programs can also be imported into memory for playing, which is very suitable for releasing programs in places without network connection.
- ◆ Standard onboard independent GPS interface , On-board brightness, temperature / humidity sensor interface , 3.5mm dual channel audio interface;
- ◆ BX-4Gu1/4Gu4 wireless module is optional.
- ◆ UV three-protection glue for all types, national standard 85 protection level, dust prevention, dampproof, anti-static, salt-spray proof;
- ◆ $-40\text{ }^{\circ}\text{C} \sim 80\text{ }^{\circ}\text{C}$, 3.5V-5.5V wide voltage, $7 * 24$ hours power-on, fault rate $\leq 0.3\%$.

Function Introduction

Control area

BX-C08 Total pixel $\leq 128K$ points: $512 * 256$, width ≤ 1024 , onboard 8 nos T75 interfaces;
One card for one screen flexible control area, rich display functions, suitable for small intel screen, bus screen.

Multiple communication mode

The controller is on board a 100M network interface, Optional wireless WIFI, 4G wireless communication interface and independent GPS interface, BX-4Gu1/4Gu4 wireless module and GPS.

Multiple management platform

There are different types of control platform for BX-C series, including PC software LedshowYQ, iLEDCloud platform , iLEDsys system. LedshowYQ is used on PC , it can support windows XP, win7, win10 and other mainstream operating system. The software provides a comprehensive, rich controller configuration, programming, program release function. iLEDCloud platform is an online multimedia information publishing platform, its core server pinned on the Alibaba cloud, providing excellent reliability and stability. Users only need the browser to use the platform, you can remotely edit program, preview the program, scheduled fixed-point playback. Users can log in via phone, pad and pc. If you use LAN, you can choose our LedshowYQ software to manage. Or you can use our iLEDCloud platform, manage by web browser.

Large storage capacity

BX-C08 built in 4G storage for high resolution video. And support extending to 256GB.

Support GPS position

BX-C series supports the convenient access of GPS module, positioning and speed measurement, and can accurately locate vehicles. The vehicle mounted screen can display the vehicle moving track

in real time, which is convenient to understand the real-time information of vehicles and personnel, and achieve better vehicle management and scheduling. After the controller is equipped with GPS, after logging in to the iLEDCloud cloud platform, in addition to remote program editing, program preview, fixed time playback and other functions, when the controller obtains the returned positioning signal, it can locate the screen position, and display the screen position on the satellite map positioning interface of the iLEDCloud cloud platform.

Support Mobile App

BX-C series supports mobile APP. APP software is very easy to understand and operate. Users can edit, send data by mobile phone, pad. APP supports searching screen, supports multi languages, supports dynamic preview, video trans-coding function. Supports zoom in and out manually.

Flexible program release methods

Users can use PC software LedshowYQ to add ,edit , preview, release. If network is not convenient, users can also use U-disk to import programs or plug-in and display.

Online update firmware

It supports remotely upgrade firmware, users can use PC software LedshowYQ, iLEDCloud platform to upgrade the latest firmware, to enhance controller functionality, performance, solve bugs. The controller has built-in logging function, it can record various important events, and support remote consult, analyze and solve the fault.

Support lots of sensors

On-board temperature, humidity, brightness ports for many kinds of environmental sensors. It can accurately measure and display brightness, temperature and humidity. Provide accurate data reference for customers in places where temperature, humidity or brightness need to be strictly controlled.

Timer switch screen

After setting the turn on and turn off time, the computer will turn on the machine on time and

automatically. It can make use of manpower and material resources reasonably, and greatly improve the service life and reliability of the display screen. When the user is inconvenient to operate on the side of the computer, this function can better realized.

Secondary development

Provide secondary development packages supporting major operating systems such as WINDOWS/LINUX/ANDROID/iOS, including various dynamic libraries, communication protocols, test routines, etc;

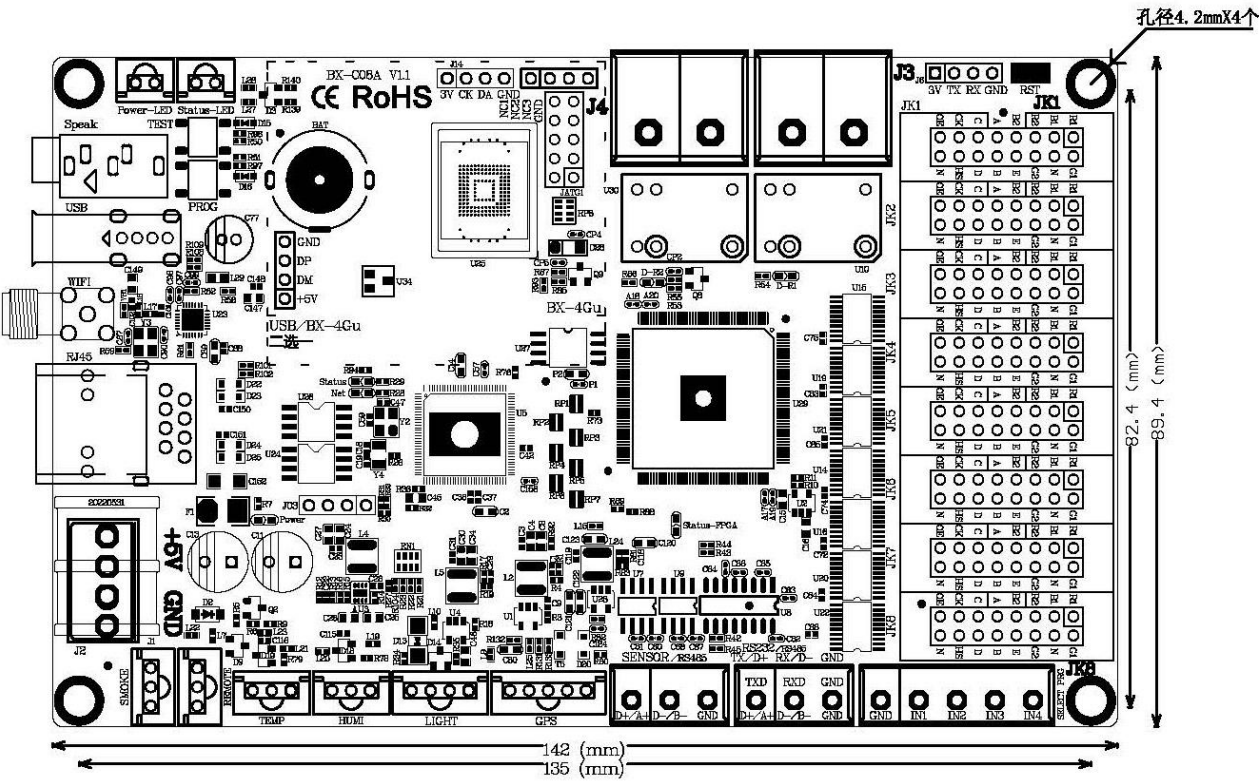
Support mainstream programming languages such as JAVA/C/C++/C #/Delphi, and support users to carry out secondary development on various platforms to maximize the development and expansion of users' personalized customization functions.

Technical specifications

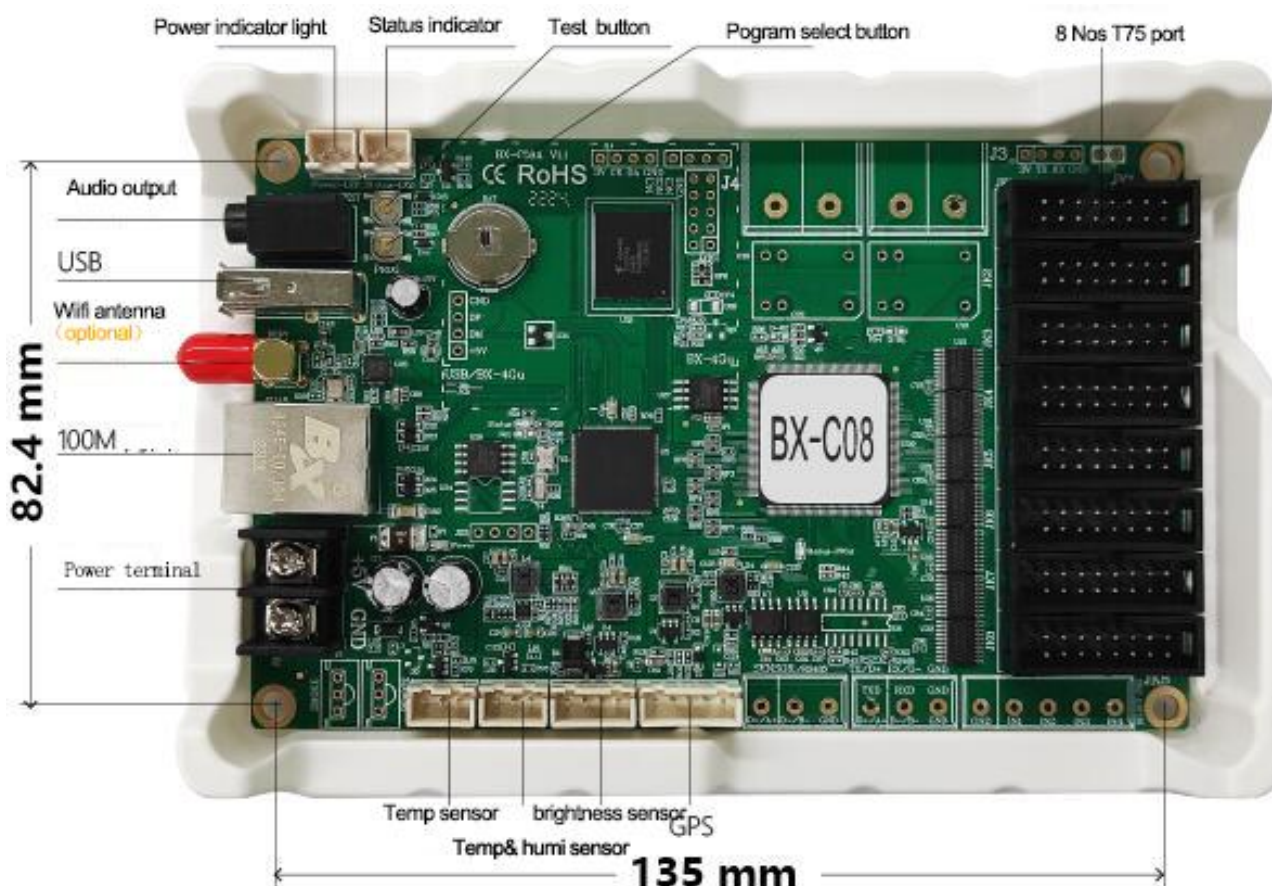
Screen indicators	
Parameter	Specification
Minimum control pixels	64 × 64
Maximum control pixels	512×256
Maximum width	1024

Complete machine specification	
Input voltage	3.5V ~ 5.5V ; Please strictly guarantee the power quality of BX-C series
Power consumption	≤10W
Working temperature	-40℃ ~ 80℃

Dimension diagram



Interface Diagram



PCB thickness $\leq 20\text{MM}$

Optional BX-4Gu1 /4Gu4 wireless module , Thickness $\leq 22\text{M}$

Contact Us

Shanghai ONBON Technology Co.,ltd (Headquarters)

Address: 7 Floor, Tower 88, 1199#, North Qinzhou Road, Xuhui District, Shanghai City, China

Tel Phone: 086-21-64955136

Fax: 086-21-64955136

Website: www.onbonbx.com

ONBON (Jiangsu) Optoelectronic Industrial Co.,LTD

Address: 1299#, Fuchun Jiang Road, Kunshan City, Jiangsu Province, China

Sales Contacts

Tel: 0086-15921814956 0086-15800379719 0086-15850351852

Email: onbon@onbonbx.com

Second Development

Tel: 0512-66589212

Email: dev@onbonbx.com

iLEDCloud

Website: <http://www.iledcloud.com/>

